

## robustel App User Guide

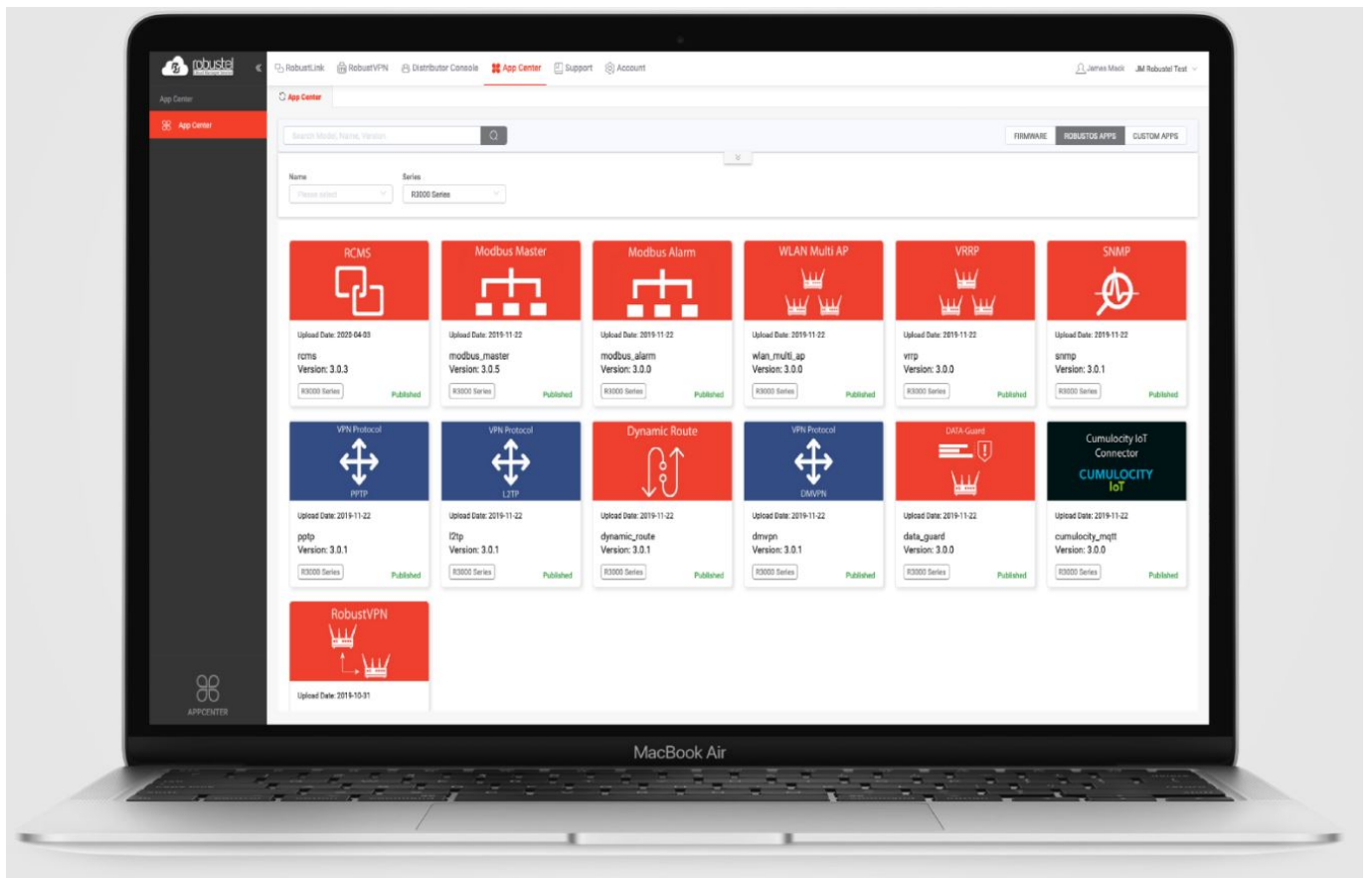
[Home](#) » [robustel](#) » robustel App User Guide 

### Contents

- [1 robustel App](#)
- [2 Revision History](#)
- [3 Overview](#)
- [4 App Installation](#)
- [5 Parameters Description](#)
- [6 WLAN Setting](#)
- [7 Documents / Resources](#)
  - [7.1 References](#)
- [8 Related Posts](#)



### robustel App



## Revision History

Updates between document versions are cumulative. Therefore, the latest document version contains all updates made to previous versions.

Release Date	App Version	Doc Version	Details
June 06, 2016	2.0.0	v.1.0.0	First Release
June 29, 2018	2.0.0	v.1.0.1	Revised the company name
December 25, 2021	2.0.0	v.1.0.2	Revised the company name Deleted the document status: Confidential

## Overview

WLAN\_multi\_AP function is used to add more AP. router could connect to the available AP automatically which had preset in router. It is an App that needs to install into router in System->App Center unit.

## App Installation

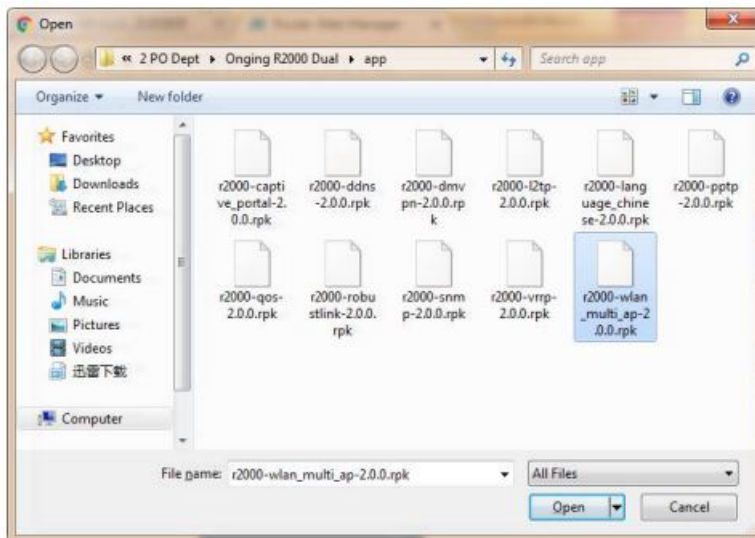
### Installation

Path System->App

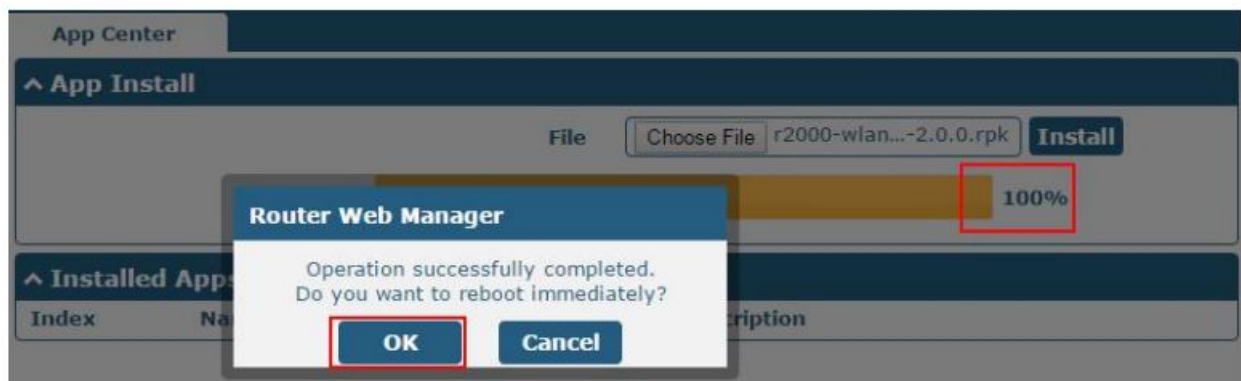
1. Please place WLAN\_multi\_AP App .rpk file (e.g. r2000-wlan\_multi\_AP-2.0.0.rpk) into a free disk of PC. And then log in router configuration page; go to System->App as the following screenshot show.



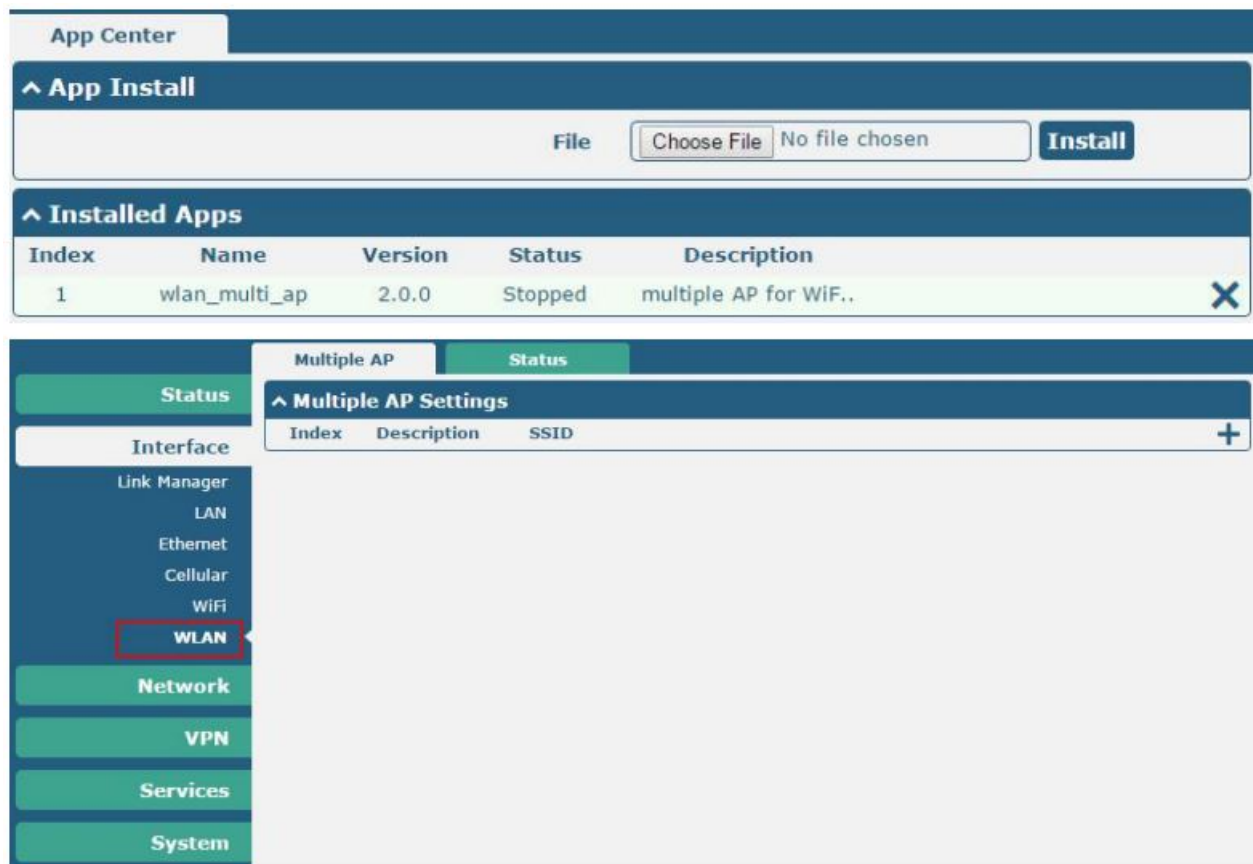
- Click "Choose File" button, select WLAN\_multi\_AP App .rpk file from the PC, then click "Install" button of router configuration page.



- When the rate of installation progress reach 100%, the system will pop up a reboot router reminder window. Please click "OK" to make router reboot.



- After router power on again, log in the configuration page, WLAN\_multi\_AP will be included in App Center's "Installed Apps" list, and the function configuration will display in Interface->WLAN part.



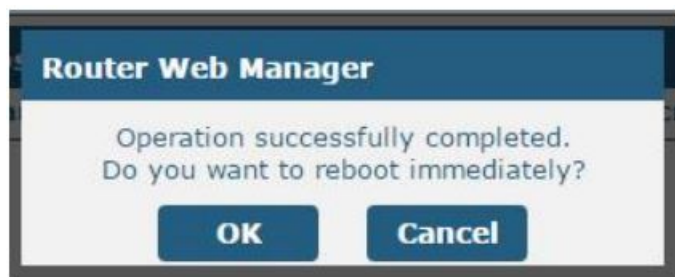
## Uninstallation

Path System->App Center

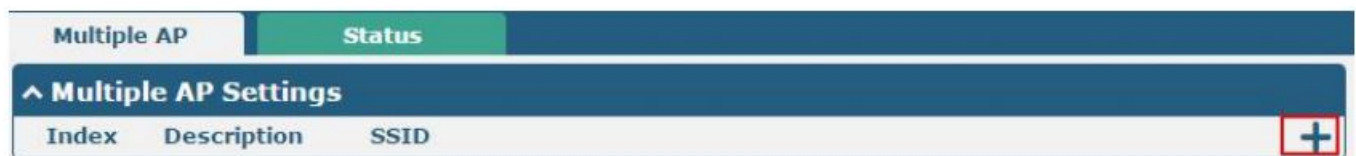
1. Go to "Installed Apps", find WLAN\_multi\_AP App and then click " X ".



2. Click "OK" in the router reboot reminder popup window. When router finish restart, WLAN\_multi\_AP had been uninstalled.



## Parameters Description



Click the "+" symbol to add a new AP for router, it will pop up the window of multiple AP configuration. The Maximum number of Wi-Fi AP is 10.




## WLAN Setting

WLAN Setting		
Item	Description	Default
SSID	Enter SSID of the access point which router want to connect. Input from 1 to 32 characters.	Null
Connect to Hidden SSID	When router works as Client mode and need to connect to any access point which has hidden SSID, you need to enable this feature.	OFF
Password	Set the password for Wi-Fi connection authentication.	Null
IP Address	Enter the static IP address. IP address with netmask, e.g. 192.168.1.1/24	Null
Gateway	Enter the WiFi AP's IP address.	Null
Primary DNS	Enter the primary DNS server IP address.	Null
Secondary DNS	Enter the Secondary DNS server IP address.	Null

Guangzhou Robustel Co., Ltd.  
Add 501, Building 2, No. 63, Yong'an Avenue,  
Huangpu District, Guangzhou, China 510660  
Tel: 86-20-82321505  
Email: [support@robustel.com](mailto:support@robustel.com)  
Web: [www.robustel.com](http://www.robustel.com)

## Documents / Resources

  <b>App User Guide</b> WLAN multi-AP  Version 4.0.1 Date: September 15, 2021  Copyright © Guangzhou Robustel Co., Ltd. All Rights Reserved	<a href="#">robustel robustel App</a> [pdf] User Guide robustel, App, robustel App
---	---

## References

- 
[4G/LTE/5G/Cellular Routers, Gateways and Modems for Industrial IoT - Robustel](#)