



# robustel PPTP Point-to-Point Tunneling Protocol App User Guide

[Home](#) » [robustel](#) » robustel PPTP Point-to-Point Tunneling Protocol App User Guide 



## PPTP Point-to-Point Tunneling Protocol App User Guide



**App User Guide PPTP**  
**Version: 1.0.2 Date: December 25, 2021**  
**Copyright© Guangzhou Robustel Co., Ltd.**  
**All Rights Reserved.**

## Contents

- [1 Revision History](#)
- [2 Chapter 1 Overview](#)
- [3 Chapter 2 App Installation](#)
- [4 Chapter 3 Parameters Description](#)
- [5 Documents / Resources](#)
  - [5.1 References](#)
- [6 Related Posts](#)

## Revision History

Updates between document versions are cumulative. Therefore, the latest document version contains all updates made to previous versions.

Release Date	App Version	Doc Version	Details
June 6, 2016	2.0.0	v.1.0.0	First Release
June 29, 2018	2.0.0	v.1.0.1	Revised the company name
December 25, 2021	2.0.0	v.1.0.2	Revised the company name Deleted the document status: Confidential

## Chapter 1 Overview

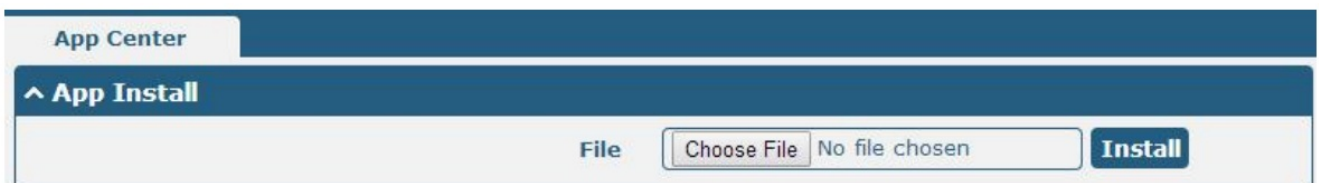
PPTP (Point-to-Point Tunneling Protocol) is a method for implementing virtual private networks. PPTP uses a control channel over TCP and a GRE tunnel operating to encapsulate PPP packets. PPTP is an App that needs to install into the router in the System->App Center unit.

## Chapter 2 App Installation

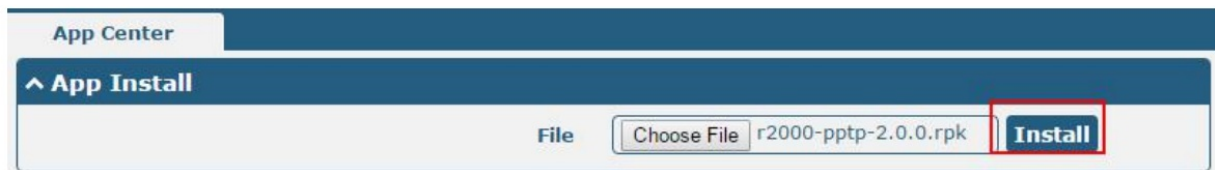
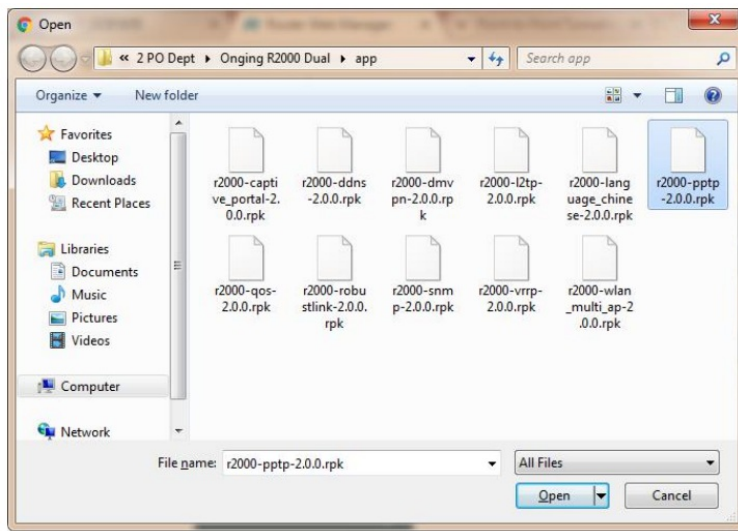
### 2.1 Installation

PathSystem->App

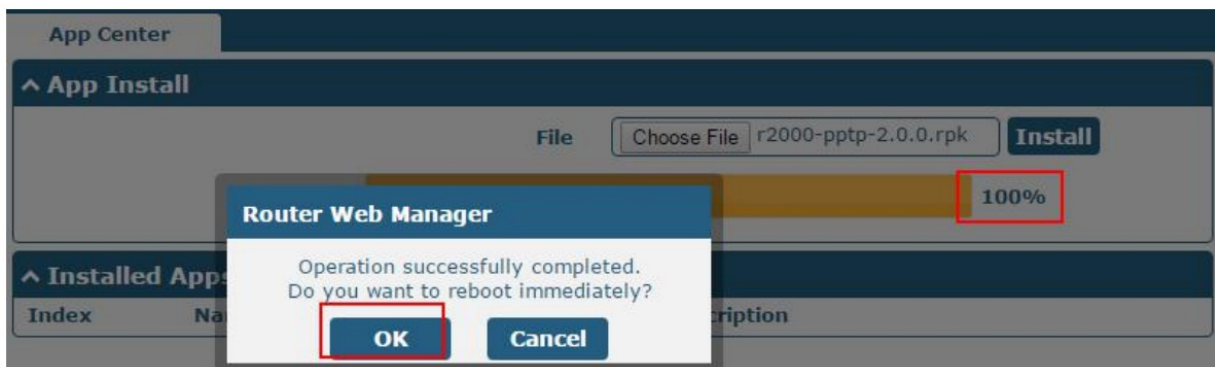
1. Please place PPTP App .rpk file (e.g. r2000-PPTP-2.0.0.rpk) into a free disk of PC. And then log in the router configuration page; go to System->App as the following screenshot show.



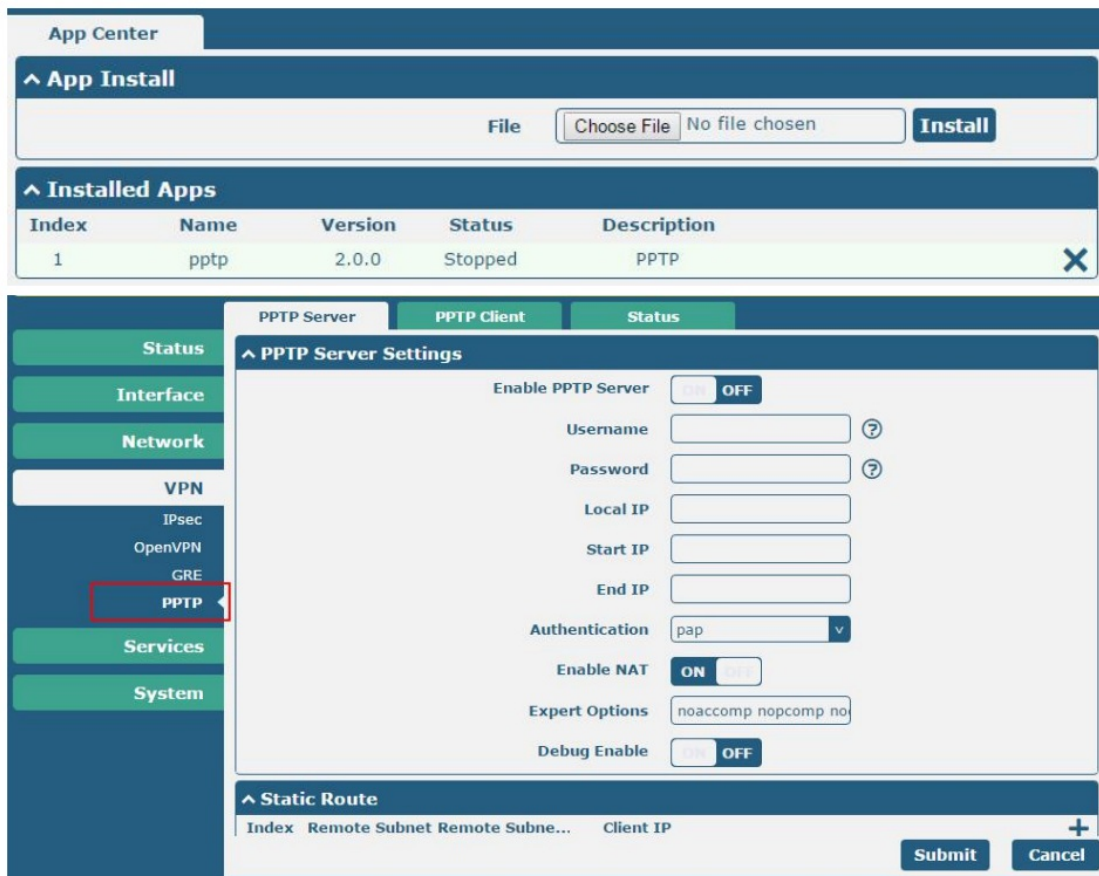
2. Click the "Choose File" button, select the PPTP App .rpk file from the PC, then click the "Install" button of the router configuration page.



3. When the rate of installation progress reaches 100%, the system will pop up a reboot router reminder window. Please click “OK” to make the router reboot.



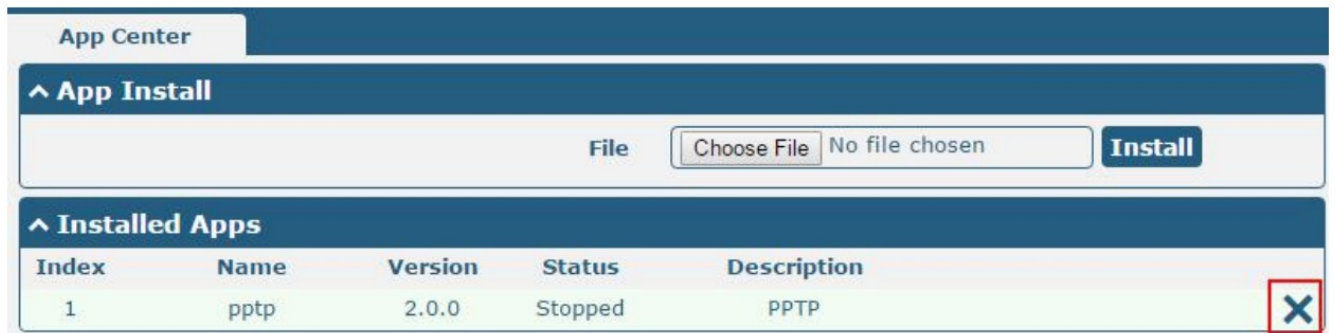
4. After the router power on again, log in the configuration page, PPTP will be included in App Center’s “Installed Apps” list, and the function configuration will display in the VPN part.



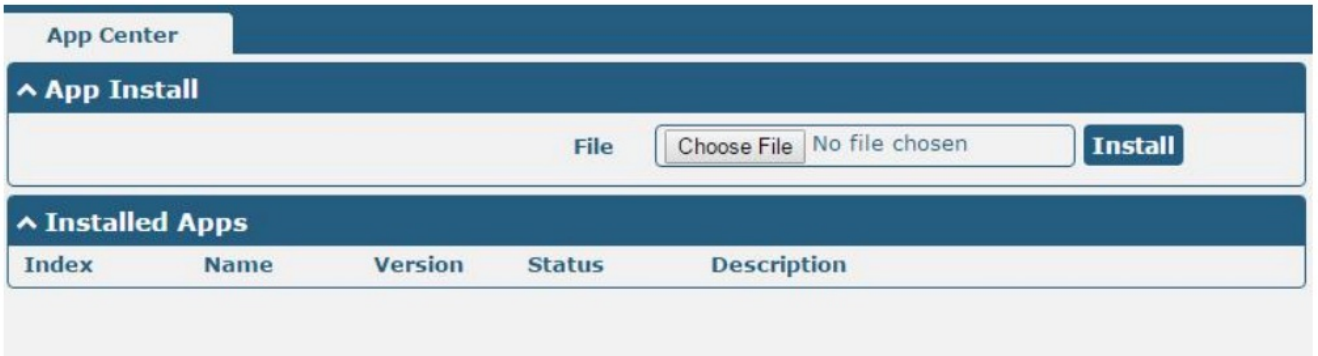
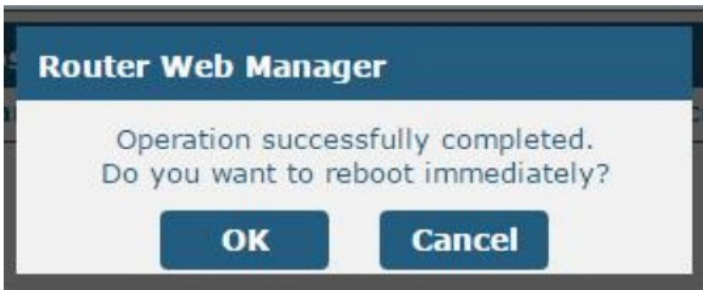
## 2.2 Uninstallation

PathSystem->App Center

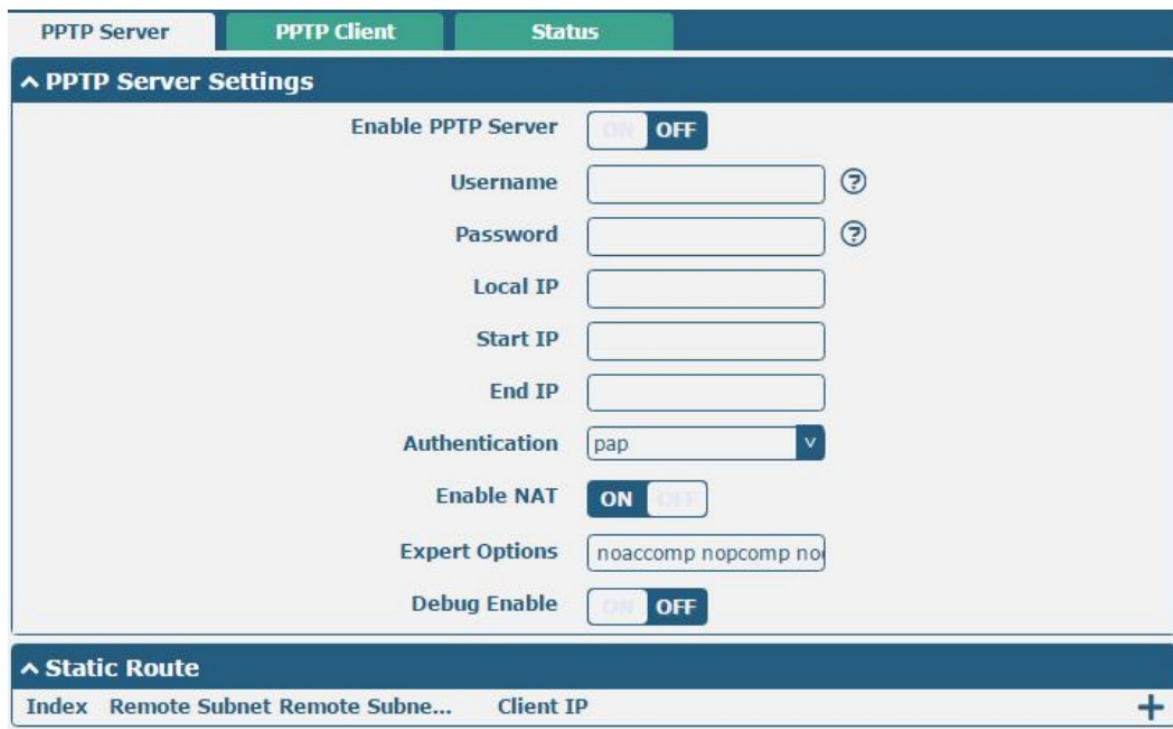
1. Go to "Installed Apps", find the PPTP App and then click "X".



2. Click "OK" in the router reboot reminder pop-up window. When the router finish restarting, PPTP had been uninstalled.



### Chapter 3 Parameters Description



Click the "+" Symbol, it will pop up a Static Router window.

**PPTP Server**

^ **Static Route**

**Index**

**Description**

**Remote Subnet**

**Remote Subnet Mask**

**Client IP**

?

Submit

Close

PPTP		
Item	Description	Default
Enable PPTP Server	Click to enable the PPTP server.	OFF
Username	Set the username which will assign to the PPTP client.	Null
Password	Set the password which will assign to the PPTP client.	Null
Local IP	Set the IP address of the PPTP server.	10.0.0.1
Start IP	Set the IP pool start IP address which will assign to the PPTP clients.	10.0.0.2
End IP	Set the IP pool end IP address that will assign to the PPTP clients.	10.0.0.100
Authentication	Select from "PAP", "CHAP", "MS-CHAP v1", and "MS-CHAP v2".	CHAP

	PPTP clients need to select the same authentication method based on the server's authentication method.	
Enable NAT	Click to enable the NAT feature of PPTP. The remote PPTP client's source IP will be disguised before accessing the router PPTP server	OFF
Expert Options	You can enter some other PPP initialization strings in this field. Each string can be separated by a space.	not nobsdcomp
Remote Subnet @ Static Route	Enter the remote peer's private IP address or remote subnet's gateway address.	Null
Remote Subnet Mask @ Static Route	Enter the remote peer's subnet mask.	Null
Client IP @ Static Route	Specifying the PPTP client IP address. Empty means anywhere.	Null

PPTP Server

PPTP Client

Status

^ **PPTP Client Settings**

Index

Enable

Description

Server Address

Authenticat...

+

Click the "+" symbol to add a PPTP client. The max tunnel accounts are 3.



## PPTP Client

### ^ PPTP Client Settings

Index

Enable ☒ ON ☐ OFF

Description

Server Address

Username  ?

Password  ?

Authentication  v

Enable NAT ☒ ON ☐ OFF

All Traffic via This Interface ☐ ON ☒ OFF

Remote Subnet

Remote Subnet Mask

Expert Options

Submit

Close

### PPTP Client

Item	Description	Default
Enable	Enable PPTP Client.	Null
Server Address	Enter your PPTP server's public IP or domain name.	Null
Username	Enter the username which was provided by your PPTP server.	Null
Password	Enter the password which was provided by your PPTP server.	Null
Authentication	Select from "Auto", "PAP", "CHAP", "MS-CHAP v1.", and "MS-CHAP v2". You need to select the corresponding authentication method based on the server's authentication method. When you select "Auto", the router will auto-select the correct method based on the server's method.	Auto
Enable NAT	Click to enable the NAT feature of PPTP. The source IP address of the host Behind R3000 will be disguised before accessing the remote PPTP server.	OFF
All traffic via this interface	After clicking to enable this feature, all data traffic will be sent via the PPTP tunnel.	OFF
Remote Subnet	Enter the remote peer's private IP address or remote subnet's gateways address.	Null
Remote Subnet Mask	Enter the remote peer's subnet mask.	Null
Expert Options	You can enter some other PPP initialization strings in this field. Each string can be separated by a space.	not nobsdcomp

Go to Status to check the PPTP connection status.

PPTP Server		PPTP Client		Status	
^ PPTP Server Status					
Index	Remote IP Address		Uptime		
^ PPTP Client Status					
Index	Description	Status	Local IP Address	Remote IP Address	Uptime



**Guangzhou Robustel Co., Ltd.**

Add: 501, Building 2, No. 63, Yong'an Avenue,  
Huangpu District, Guangzhou, China 510660

Tel: 86-20-82321505

Email: [support@robustel.com](mailto:support@robustel.com)

Web: [www.robustel.com](http://www.robustel.com)

**Documents / Resources**

The image shows the cover of the 'robustel App User Guide' PDF. It includes the Robustel logo, the title 'App User Guide', and the subtitle 'PPTP'. It also mentions 'Version 1.0.1' and 'Date: September 15, 2018'.	<p><a href="#">robustel PPTP Point-to-Point Tunneling Protocol App</a> [pdf] User Guide PPTP, Point-to-Point Tunneling Protocol App, Tunneling Protocol App, Protocol App, PPTP, App</p>
--	--

**References**

- [Robustel 4G/LTE/5G/Cellular Routers, Gateways and Modems for Industrial IoT - Robustel](#)