



robustel PPTP App User Guide

[Home](#) » [robustel](#) » robustel PPTP App User Guide 

robustel PPTP App User Guide



Contents

- [1 Revision History](#)
- [2 Chapter 1 Overview](#)
- [3 Chapter 2 App Installation](#)
- [4 Chapter 3 Parameters Description](#)
- [5 Documents / Resources](#)
- [6 Related Posts](#)

Revision History

Updates between document versions are cumulative. Therefore, the latest document version contains all updates made to previous versions.

Release Date	App Version	Doc Version	Details
2016-06-06	2.0.0	v.1.0.0	First Release
2018-06-29	2.0.0	v.1.0.1	Revised the company name

Chapter 1 Overview

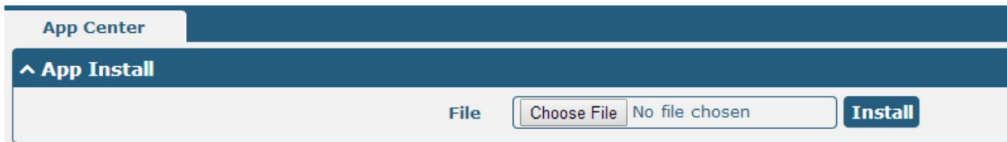
PPTP (Point-to-Point Tunneling Protocol) is a method for implementing virtual private networks. PPTP uses a control channel over TCP and a GRE tunnel operating to encapsulate PPP packets. PPTP is an App which needs to install into router in System->App Center unit.

Chapter 2 App Installation

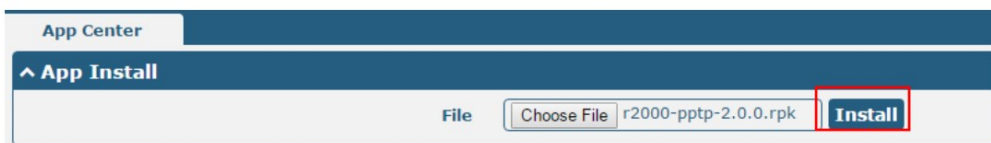
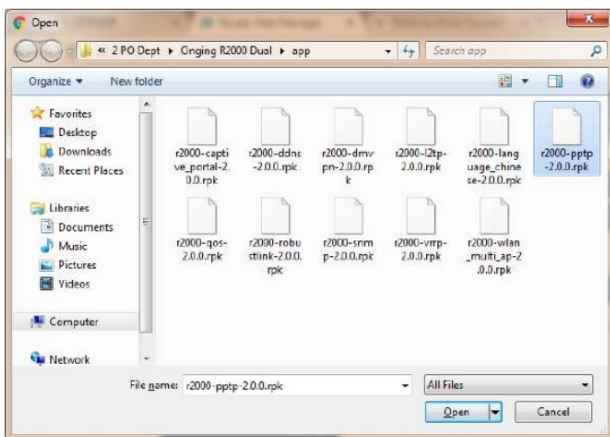
Installation

Path System->App

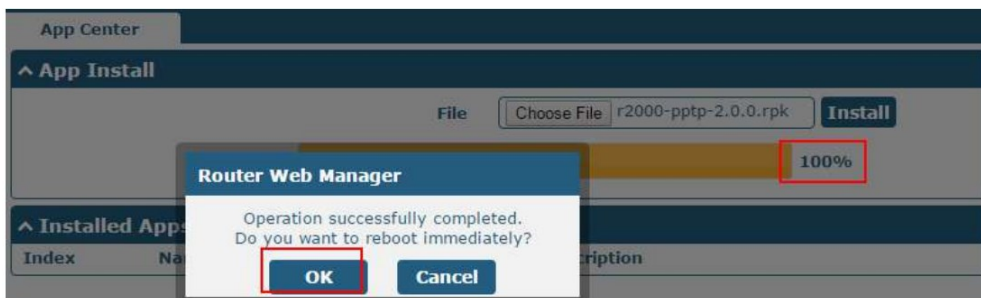
1. Please place PPTP App .rpk file (e.g. r2000-pptp-2.0.0.rpk) into a free disk of PC. And then log in router configuration page; go to System->App as the following screenshot show.



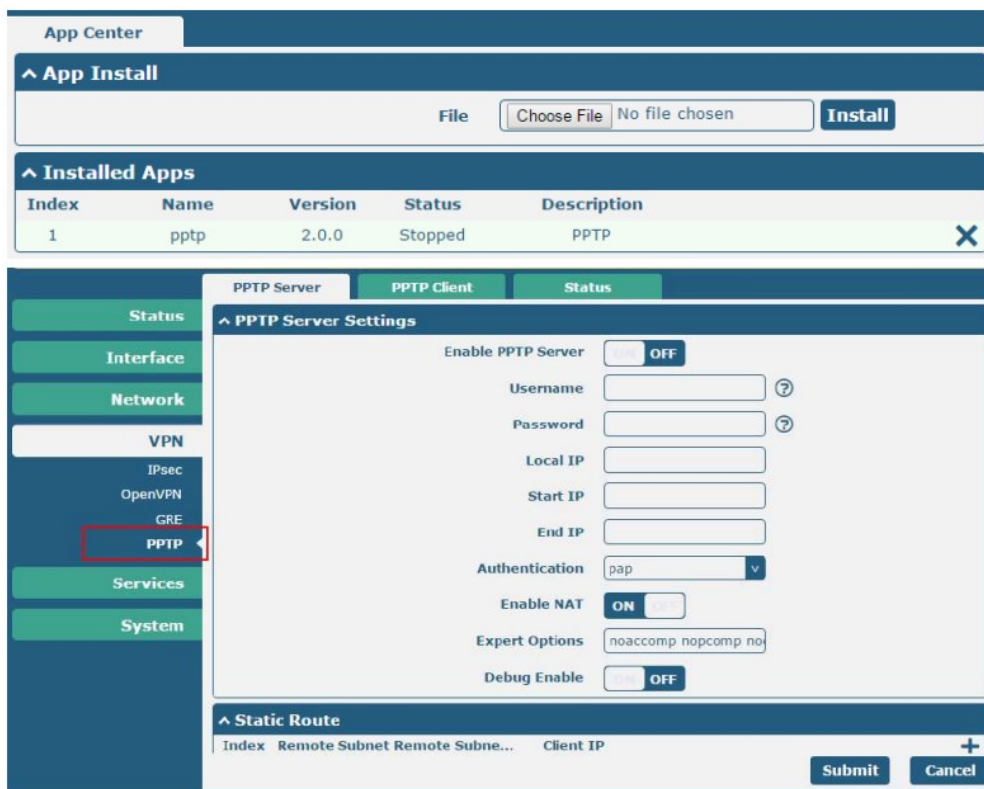
2. Click “Choose File” button, select PPTP App .rpk file from the PC, then click “Install” button of router configuration page.



3. When the rate of installation progress reach 100%, the system will pop up a reboot router reminder window. Please click “OK” to make router reboot.

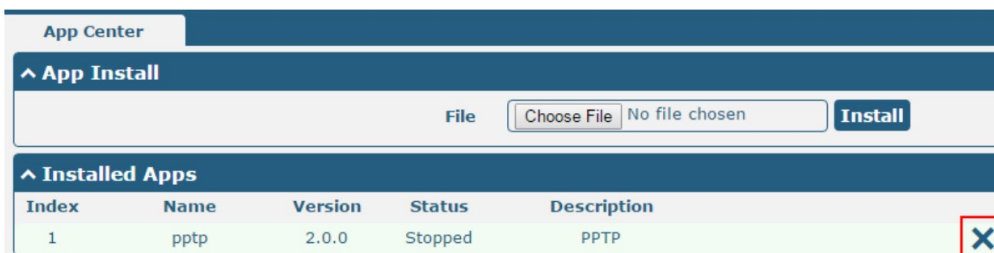


4. After router power on again, log in configuration page, PPTP will be include in App Center's “Installed Apps” list, and the function configuration will display in VPN part.

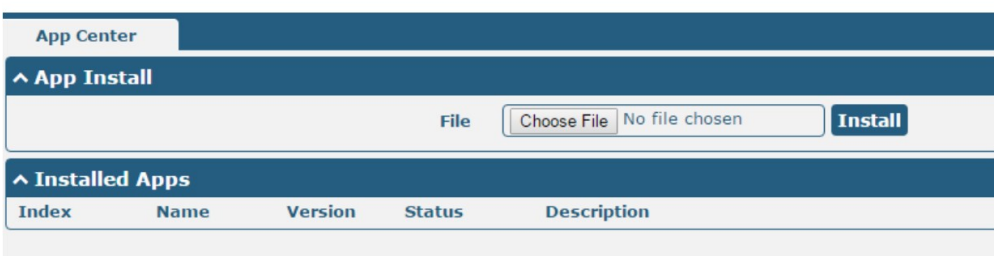
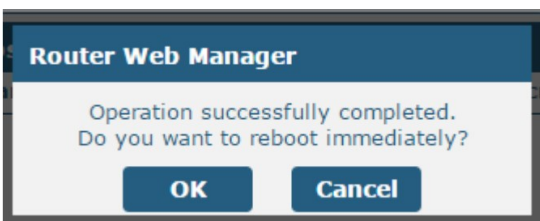


Uninstallation Path System->App Center

1. Go to "Installed Apps", find PPTP App and then click "X".



2. Click "OK" in the router reboot reminder pop up window. When router finish restart, PPTP had been uninstalled.



Chapter 3 Parameters Description

PPTP Server

PPTP Client

Status

^ PPTP Server Settings

Enable PPTP Server

ON

OFF

Username

?

Password

?

Local IP

Start IP

End IP

Authentication

v

Enable NAT

ON

OFF

Expert Options

Debug Enable

ON

OFF

^ Static Route

Index

Remote Subnet

Remote Subne...

Client IP

+

Click “+” Symbol, it will pop up a Static Router window.

PPTP Server

^ Static Route

Index

1

Description

Remote Subnet

Remote Subnet Mask

Client IP

?

Submit

Close

PPTP		
Item	Description	Default
Enable PPTP Server	Click to enable PPTP server.	OFF
Username	Set the username which will assign to PPTP client.	Null
Password	Set the password which will assign to PPTP client.	Null
Local IP	Set the IP address of PPTP server.	10.0.0.1
Start IP	Set the IP pool start IP address which will assign to the PPTP clients.	10.0.0.2
End IP	Set the IP pool end IP address which will assign to the PPTP clients.	10.0.0.100
Authentication	Select from “PAP”, “CHAP”, “MS-CHAP v1” and “MS-CHAP v2”.	CHAP
	PPTP client need to select the same authentication method based on this server’s authentication method.	
Enable NAT	Click to enable NAT feature of PPTP. The remote PPTP client’s source IP will be disguised before accessing router PPTP server	OFF
Expert Options	You can enter some other PPP initialization strings in this field. Each string can be separated by a space.	noccpnobsd comp
Remote Subnet @Static Route	Enter the remote peer’s private IP address or remote subnet’s gateway address.	Null
Remote Subnet Mask @ Static Route	Enter the remote peer’s subnet mask.	Null
Client IP @Static Route	Specifying the PPTP client IP address. Empty means anywhere.	Null

PPTP Server	PPTP Client	Status
^ PPTP Client Settings		
Index	Enable	Description
Server Address	Authenticat...	
+		

Click “+” symbol to add a PPTP client. The max tunnel accounts are 3.

PPTP Client

^ **PPTP Client Settings**

Index
Enable
Description
Server Address
Username
Password
Authentication
Enable NAT
All Traffic via This Interface
Remote Subnet
Remote Subnet Mask
Expert Options

ON
OFF

 ?
 ?

pap
v

ON
OFF

ON
OFF

Submit


Close

PPTP Client		
Item	Description	Default
Enable	Enable PPTP Client.	Null
Server Address	Enter your PPTP server's public IP or domain name.	Null
Username	Enter the username which was provided by your PPTP server.	Null
Password	Enter the password which was provided by your PPTP server.	Null
Authentication	Select from "Auto", "PAP", "CHAP", "MS-CHAP v1" and "MS-CHAP v2". You need to select the corresponding authentication method based on the server's authentication method. When you select "Auto", router will autoselect the correct method based on server's method.	Auto
Enable NAT	Click to enable NAT feature of PPTP. The source IP address of host BehindR3000 will be disguised before accessing the remote PPTP server.	OFF
All traffic via this interface	After click to enable this feature, all data traffic will be sent via PPTP tunnel.	OFF
Remote Subnet	Enter the remote peer's private IP address or remote subnet's gateway address.	Null
Remote Subnet Mask	Enter the remote peer's subnet mask.	Null
Expert Options	You can enter some other PPP initialization strings in this field. Each string can be separated by a space.	noccpnobsd comp

Go to Status to check the PPTP connection status.

PPTP Server		PPTP Client		Status	
^ PPTP Server Status					
Index	Remote IP Address		Uptime		
^ PPTP Client Status					
Index	Description	Status	Local IP Address	Remote IP Address	Uptime

Documents / Resources

 App User Guide PPTP <small>Version 1.0.1 Date: 2024-06-05 File: PPTP-UG-001.pdf</small> <small>Copyright 2024 Robustel Inc. All Rights Reserved</small>	robustel PPTP App [pdf] User Guide PPTP App, PPTP, App
--	---

[Manuals+](#).