

# robustel Captive Portal Webpage Authentication Setting Application User Guide

[Home](#) » [robustel](#) » robustel Captive Portal Webpage Authentication Setting Application User Guide

## robustel Captive Portal Webpage Authentication Setting Application



### Revision History

Updates between document versions are cumulative. Therefore, the latest document version contains all updates made to previous versions.

Release Date	App Version	Doc Version	Details
June 06, 2016	2.0.0	v.1.0.0	First Release
June 29, 2018	2.0.0	v.1.0.1	Revised the company name
December 25, 2021	2.0.0	v.1.0.2	Revised the company name Deleted the document status: confidential

## Contents [ [hide](#) ]

### [1 Chapter 1 Overview](#)

### [2 Chapter 2 App Installation](#)

#### [2.1 Installation](#)

#### [2.2 Uninstallation](#)

### [3 Chapter 3 Parameters](#)

#### [Description](#)

### [4 Documents / Resources](#)

#### [4.1 References](#)

### [5 Related Posts](#)

## Chapter 1 Overview

Captive Portal is a webpage authentication setting. A captive portal is a 'Landing' web page, presented by a Layer 3 brand Layer 2 Operator and shown to users before they gain more-broad access to URL or http-based Internet services. Often used to present a Landing or Log-In page, the portal intercepts observed packets until such time as the user is authorized to launch browser sessions. After being redirected to a web page which may require authentication, payment, acceptance of EULA/acceptable use policies or other valid credentials that the host and user agree to, the user is granted conditional Internet access.

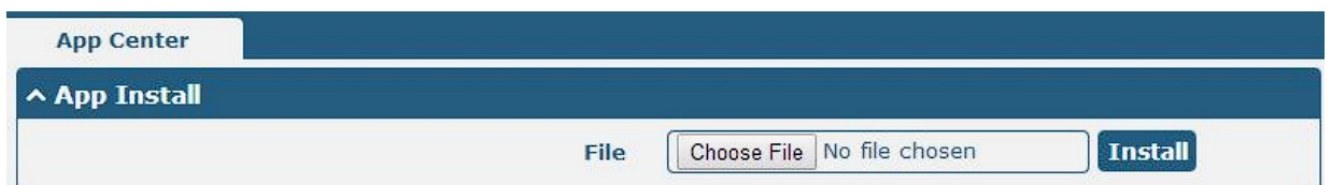
Captive Portal function in router used to authenticate the Wi-Fi access, it is an App which needs to install into router in System->App Center unit.

## Chapter 2 App Installation

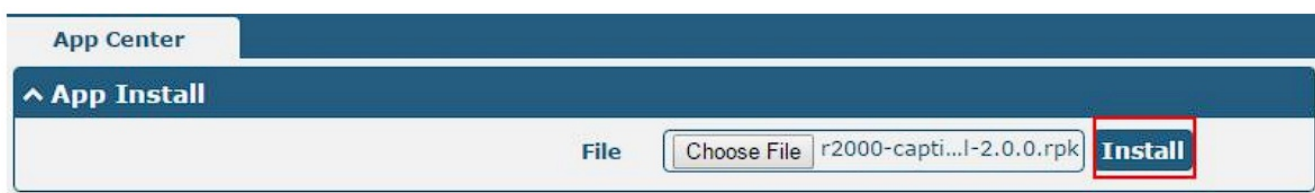
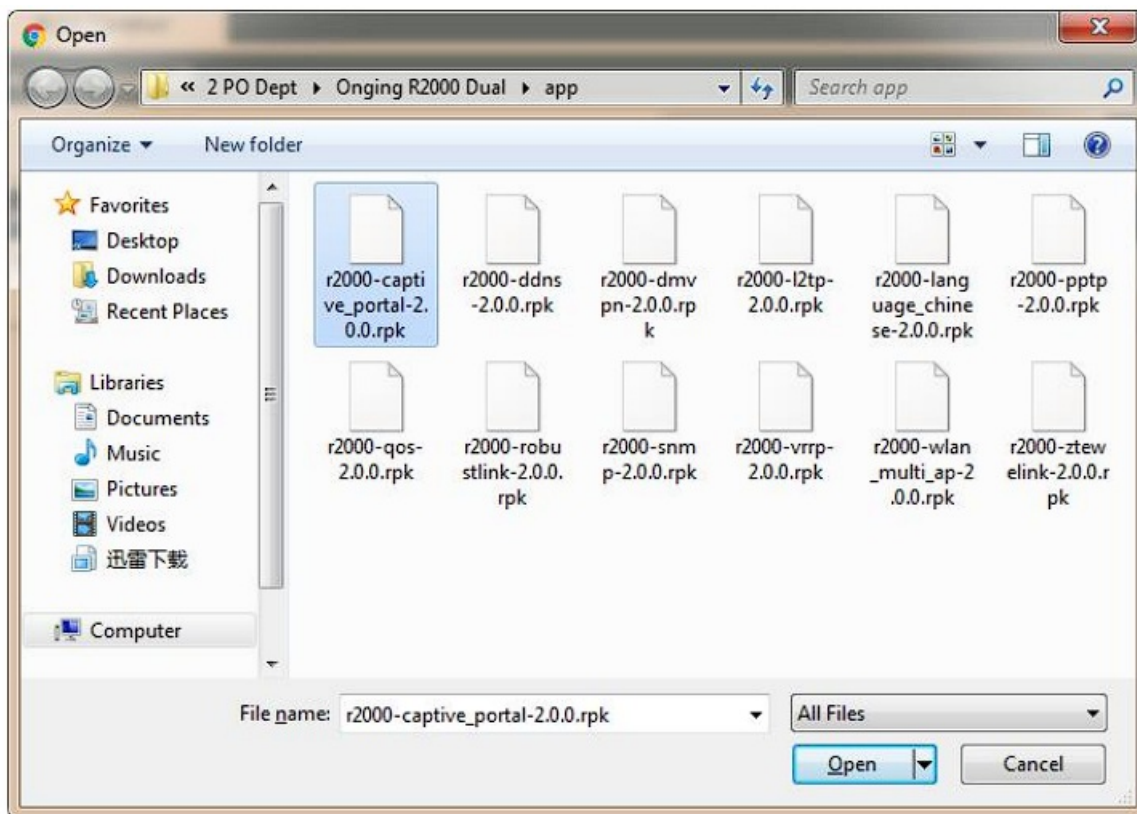
### Installation

Path **System->App**

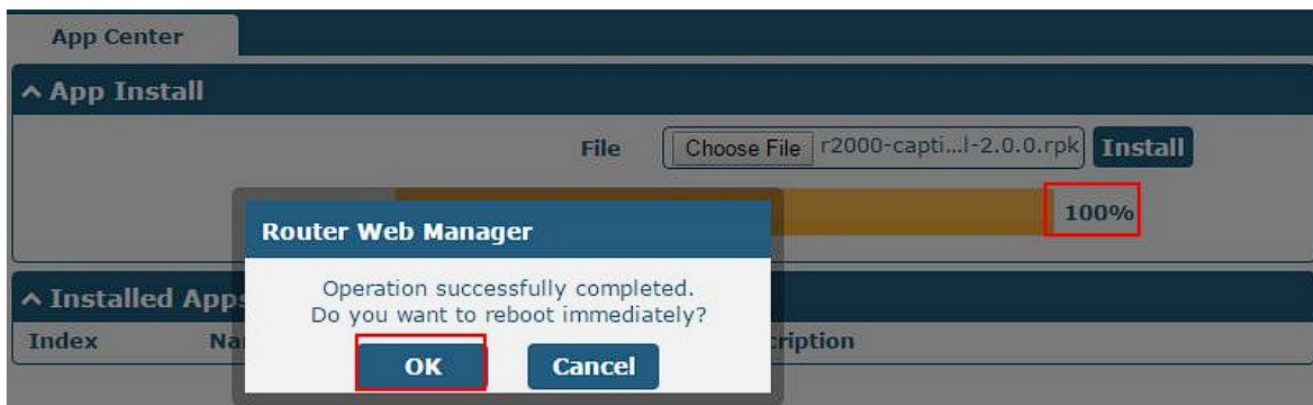
1. Please place Captive Portal App .rpk file (e.g. r2000-captive portal-2.0.0.rpk) into a free disk of PC. And then log in router configuration page, go to **System->App** as the following screenshot show.



2. Click "Choose File" button, select Captive Portal App .rpk file from the PC, then click "Install" button on router configuration page.



- When the rate of installation progress reach 100%, the system will pop up a reboot router reminder window. Please click "OK" to make router reboot.



- After router power on again, log in configuration page, Captive Portal will be include in AppCenter's "Installed Apps" list, and the function configuration will display in **Services** part.

App Center

App Install

File

Choose File

No file chosen

Install

Installed Apps

Index	Name	Version	Status	Description
1	captive_portal	2.0.0	Stopped	captive_portal

Captive Portal

Status

Interface

Network

VPN

Services

Captive Portal

Web Server

Advanced

System

Captive Portal

General Settings

Enable

ON

OFF

Primary Radius Server

Secondary Radius Server

Authentication Port

Accounting Port

Radius Share Secret

Client Network

Client Netmask

Advanced Settings

Allowed Networks

Allowed Clients


Redirect URL

Submit

Cancel

## Uninstallation

Path **System->App Center**

- Go to "Installed Apps", find Captive Portal App and then click "  "

App Center

App Install

File

Choose File

No file chosen

Install

Installed Apps

Index	Name	Version	Status	Description
1	captive_portal	2.0.0	Stopped	captive_portal

- Click "OK" in the router reboot reminder pop up window. When router finish restart, Captive Portal had been uninstalled.



**App Center**

**^ App Install**

File  No file chosen

**^ Installed Apps**

Index	Name	Version	Status	Description
-------	------	---------	--------	-------------

## Chapter 3 Parameters Description

**Captive Portal**

**^ General Settings**

Enable

☒ ON ☐ OFF

Primary Radius Server

Secondary Radius Server

Authentication Port

Accounting Port

Radius Share Secret

?

Client Network

Client Netmask

**^ Advanced Settings**

Allowed Networks

?

Allowed Clients

?

Redirect URL

?

Captive Portal		
Item	Description	Default
Enable	Click to enable Captive Portal function. Captive Portal mainly used for network access authentication. Note: This function only is available for Wi-Fi function of router. Before use the function in actual application, please remember to configure router as a Wi-Fi AP.	ON
Primary Radius Server	Enter Primary Radius Server's IP address. Radius Server is responsible for receiving and responding Wi-Fi access request from Wi-Fi client under router (Wi-Fi AP).	Null
Secondary Radius Server	Enter Secondary Radius Server's IP address.	Null
Authentication Port	Enter the Authentication Port which is used to authenticate users' access.	1812
Accounting Port	Enter the Accounting Port which is used to authenticate users' access.	1813
Radius Share Secret	Enter the Radius Share Secret which used to authenticate the connection between router and Radius Server.	Null
Client Network	Set the subnet for router used to assign to Wi-Fi client.	192.168.137.0
Client Netmask	Set the netmask of Client Network.	255.255.255.0
Allowed Networks	Enter any website of Wi-Fi client, comma separated. Specific user can access network without authentication.	Null
Allowed Clients	Enter user's MAC, comma separated. Specific Wi-Fi client can access network without authentication.	Null
Redirect URL	Enter URL, after log in landing page, the webpage switch to URL page automatically.	Null

**Guangzhou Robustel Co., Ltd.**

Add: 501, Building 2, No. 63, Yong'an Avenue, Huangpu District, Guangzhou, China 510660


Tel: 86-20-82321505

Email: [support@robustel.com](mailto:support@robustel.com)

Web: [www.robustel.com](http://www.robustel.com)



**Documents / Resources**

  <b>App User Guide</b> Captive Portal  Version 1.0.0 Date: November 14, 2018  Copyright 2018 Robustel Networks Inc. All Rights Reserved	<a href="#">robustel Captive Portal Webpage Authentication Setting Application</a> [pdf] User Guide Captive Portal, Webpage Authentication Setting Application, Authentication Setting Application, Setting Application, Captive Portal, Application
---	--

References

-  [4G/LTE/5G/Cellular Routers, Gateways and Modems for Industrial IoT - Robustel](#)