



ROBUS R4EMLEDST-01 Viva 4W LED Maintained Emergency Exit Box Instruction Manual

[Home](#) » [ROBUS](#) » [ROBUS R4EMLEDST-01 Viva 4W LED Maintained Emergency Exit Box Instruction Manual](#) 

Contents

- [1 ROBUS R4EMLEDST-01 Viva 4W LED Maintained Emergency Exit Box Instruction Manual](#)
- [2 VIVA 4W LED MAINTAINED EMERGENCY EXIT BOX, SELF TEST, LIFEPO4 BATTERY](#)
 - [2.1 R4EMLEDST-01](#)
- [3 Installation](#)
- [4 Testing](#)
- [5 Installation and Maintenance Record:](#)
- [6 Read More About This Manual & Download PDF:](#)
- [7 Documents / Resources](#)
- [8 Related Posts](#)

ROBUS R4EMLEDST-01 Viva 4W LED Maintained Emergency Exit Box Instruction Manual



VIVA 4W LED MAINTAINED EMERGENCY EXIT BOX, SELF TEST, LIFEPO4 BATTERY

R4EMLEDST-01

PLEASE READ INSTRUCTION BEFORE COMMENCING INSTALLATION AND RETAIN FOR FUTURE REFERENCES.

! Electrical products can cause death or injury, or damage to property. If in any doubt about the installation or use of this product, consult a competent electrician

Note:

Product technical information and specification may change over time without prior notification. For the latest technical information please visit our web site www.robust.com.au

0°C < Ta < +40°C, 220-240V~50/60Hz, Class II, IP20, Battery warranty 3 years, Luminaire is non-dimmable.

Installation

1. Ensure mains supply is switched off before commencing installation.
2. Remove the PC tray from the body of fitting and remove the cover of terminal from the PC tray by removing the screw as per fig 2.
3. Knock out the intended cable entry hole suitable for your installation.
4. Mark appropriate fixing points on wall or ceiling; check that fixings will not impinge on concealed cables or pipes before drilling holes.
5. Fix the PC tray to ceiling/wall using suitable screws.
6. Connect wires from unswitched supply to terminals on gear tray, Brown to PL, Blue to N and green/yellow to Earth. There is a link between switched live (SL) and permanent live (PL) terminals (maintained). LEDs controlled by switch, connect switched live wire to terminal SL and permanent live to PL. Note: if "SL" terminal not connected, fitting works as non-maintained.
7. Write installation date on battery.
8. Insert the legends on to diffuser.
9. Attach the body of fitting on to the PC tray. Switch on supply: The green LED should come on indicating correct battery charge status. When supply to permanent live PL is lost, battery will operate fitting in emergency mode. Interrupt supply by pressing the test switch, the fitting will then operate in emergency mode for a short period of time.

Note: This luminaire has no user serviceable parts. If damaged, disconnect from mains and discontinue use.

Testing

The emergency lighting must be inspected and tested regularly in accordance with local codes of practice: note: for safety reasons tests should be carried out during daylight hours.

The minimum recommended test schedule is as follows:

After installation, allow 24 hours to ensure full battery charge and then interrupt the supply; the maximum duration time is 90 minutes check that LEDs are still lighting.

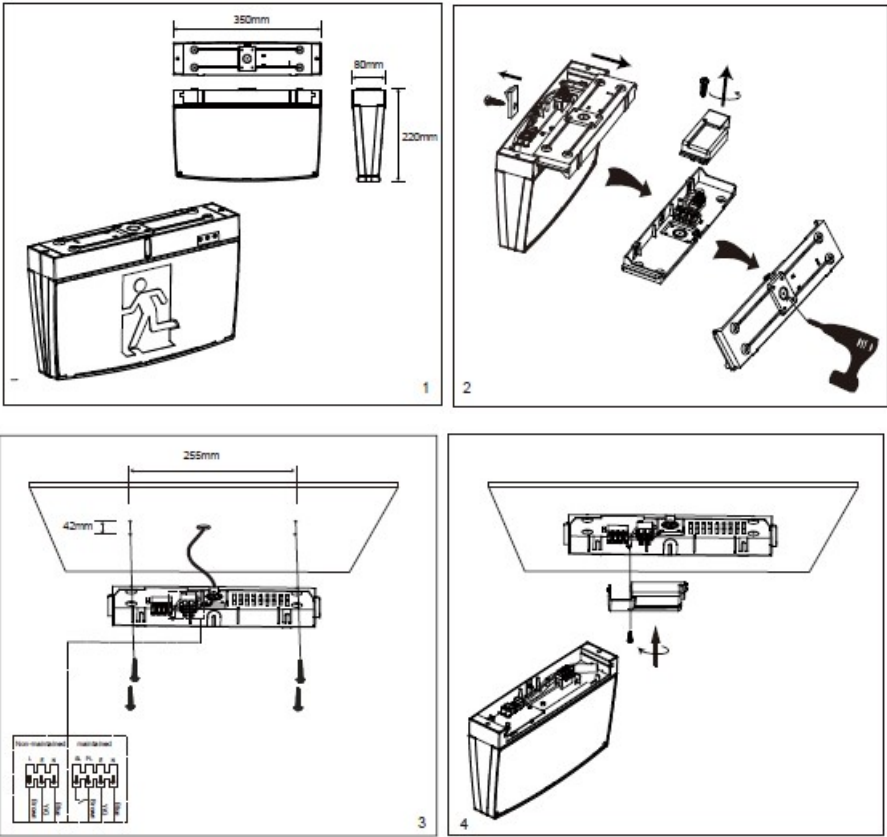
1. Daily check that charge indicator LED is working.
2. Monthly, interrupt mains for a short period and check LED lights.
3. Annual 12 month check, full duration test. Interrupt mains supply, LEDs will light and should last for a minimum

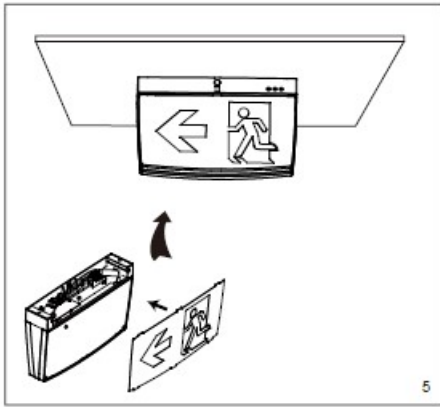
- 90 minutes operation: batteries must be replaced when they can no longer support 90 minutes operation.
- 4. Complete record sheet on installation and retain in maintenance file.
 - 5. Update file with ongoing test records for inspection by fire officer or other duly authorised person.

Installation and Maintenance Record:

Installer
Installation Type
Installation test duration & Date

Month	Test	1 st Year		2 nd Year		3 rd Year		4 th Year		5 th Year	
		Signed	Date	Signed	Date	Signed	Date	Signed	Date	Signed	Date
1	Short										
2	Short										
3	Short										
4	Short										
5	Short										
6	Short										
	90 min.										
7	Short										
8	Short										
9	Short										
10	Short										
11	Short										
12	Short										
	90 min.										





Read More About This Manual & Download PDF:

Documents / Resources



[ROBUS R4EMLEDST-01 Viva 4W LED Maintained Emergency Exit Box](#) [pdf] Instruction Manual
R4EMLEDST-01, Viva 4W LED Maintained Emergency Exit Box