



RobotLAB DE1230B Series Food Delivery Robot User Manual

[Home](#) » [RobotLAB](#) » RobotLAB DE1230B Series Food Delivery Robot User Manual 

Contents

- [1 RobotLAB DE1230B Series Food Delivery Robot](#)
- [2 Basic Use](#)
- [3 Interface Description](#)
- [4 START DINNER DELIVERY](#)
- [5 SERVICE SETTING](#)
- [6 Voice setting](#)
- [7 ADMINISTRATOR SETTING](#)
- [8 About this product](#)
- [9 FCC compliance statement](#)
- [10 Documents / Resources](#)
- [11 Related Posts](#)



RobotLAB DE1230B Series Food Delivery Robot



Basic Use

Startup/Shutdown

Main Power Switch

There is the main power switch at the bottom of the machine, which is located beside the universal wheel on the rear right side of the machine and is used to disconnect the battery power. It is turned off by default at the factory. When it is used for the first time, you need to manually turn on the switch. When the machine is not used for a long time (more than one month), the battery power should be maintained at about 40%, and the main power switch should be turned to the off state to prevent the battery from running low due to long periods of non-use (as shown below).



- **Startup** Press the power button once, the buzzer will beep for a short time and then beep continuously five times, the chassis will start, and the external power Supply interface will be powered(as shown below).



- **Shutdown** Press and hold the power button, release it when the buzzer beeps for a long time, and wait for the machine to shut down.

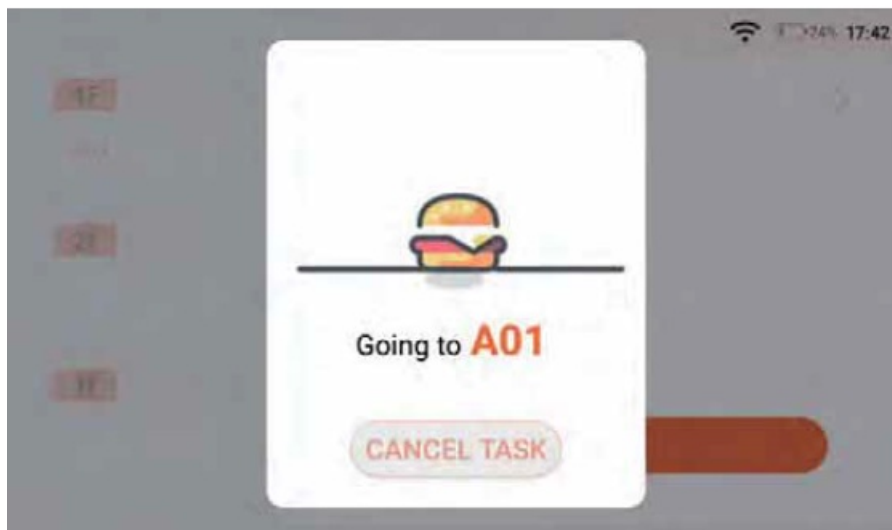
Interface Description

1 Status bar

- Display Unat the robot is In emergency stop state currency
- Display the current network connection status
- Display network disconnection Display the current power
- 5/8, Display currently in cycle mode, current delivery times/total delivery times

After entering the main page of software, the dinner plate at the first layer is selected by default; after the site selection is completed, it will automatically jump to the dinner plate at the second level; you can continue to select the site, and tap [Go] to start dinner delivery after completing the configuration of all tasks.

START DINNER DELIVERY



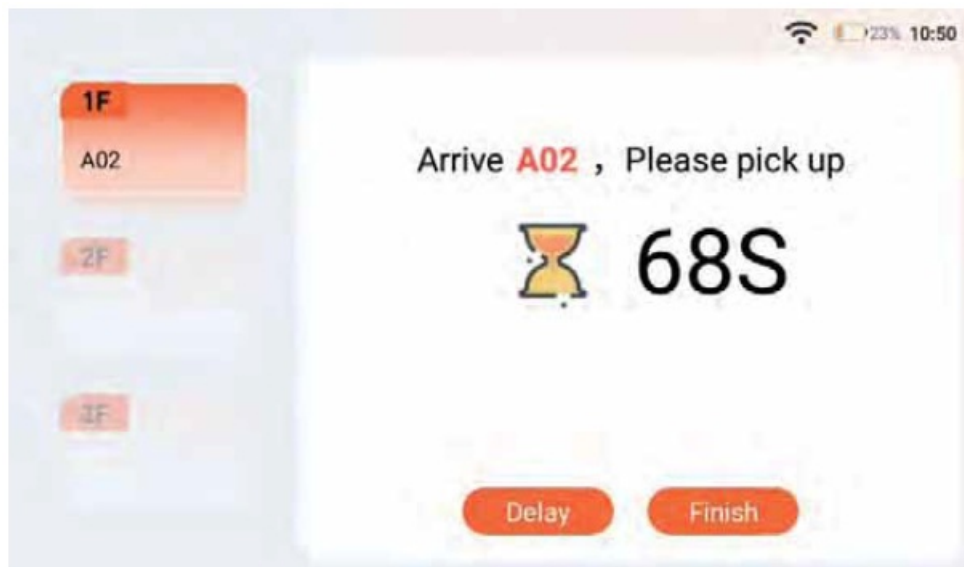
Cancel dinner delivery

3s after the dinner delivery task starts, tap [Cancel Task], a password input box will pop up, and enter the delivery staff password to cancel the task.



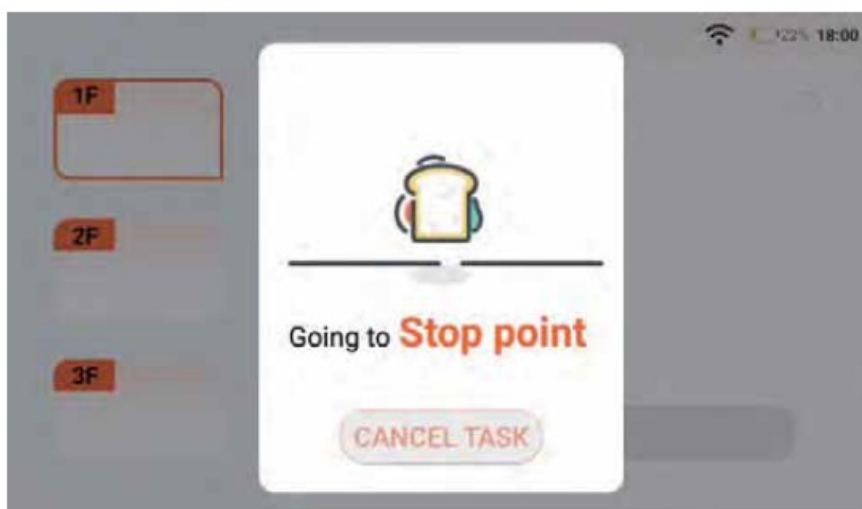
Complete dinner delivery

When the robot arrives at the designated site, it will start a 70s countdown. After picking up the dinner and tapping [Finish], the robot will complete a dinner delivery task and go to the next task location; after tapping [Delay), the robot will stay for another 70s



Return to stop

After all the delivery tasks are completed, the robot will go to the stop and be ready to receive the task again.

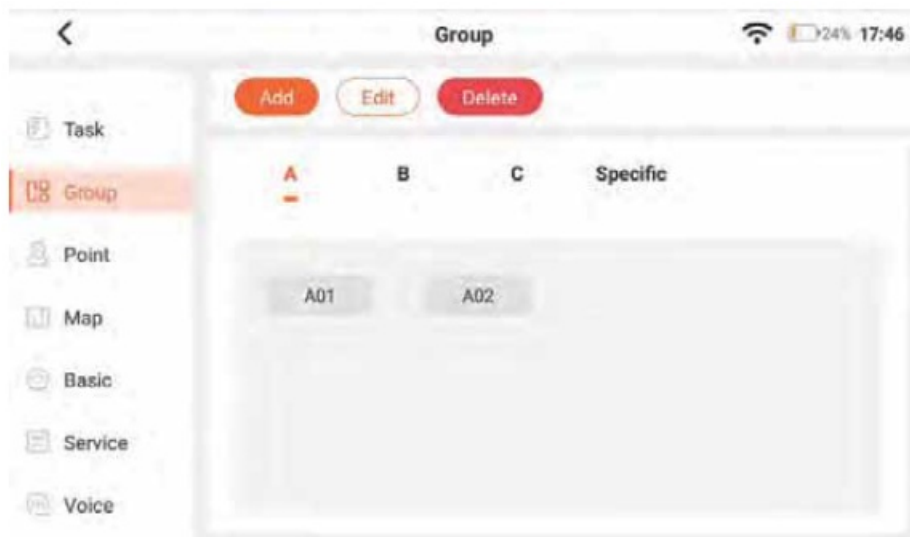


Background management configuration

After all the delivery tasks are completed, the robot will go to the stop and be ready to receive the task again.

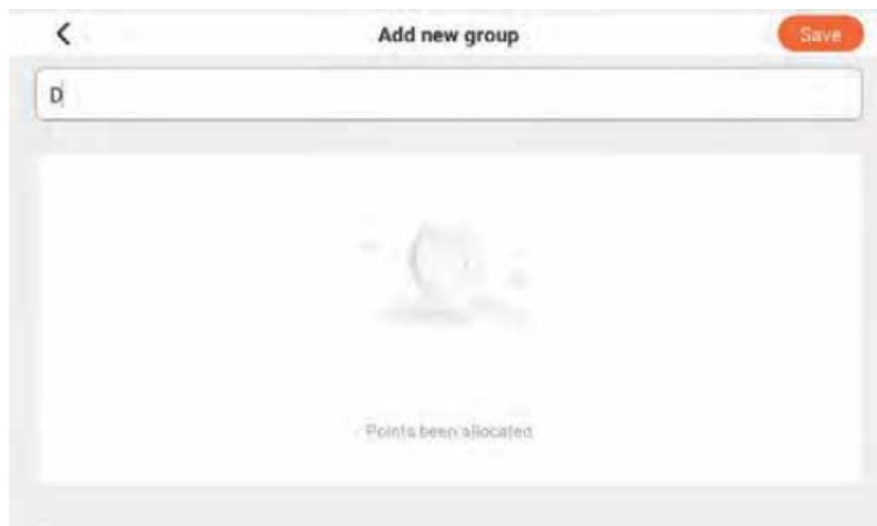


GROUP MANAGEMENT



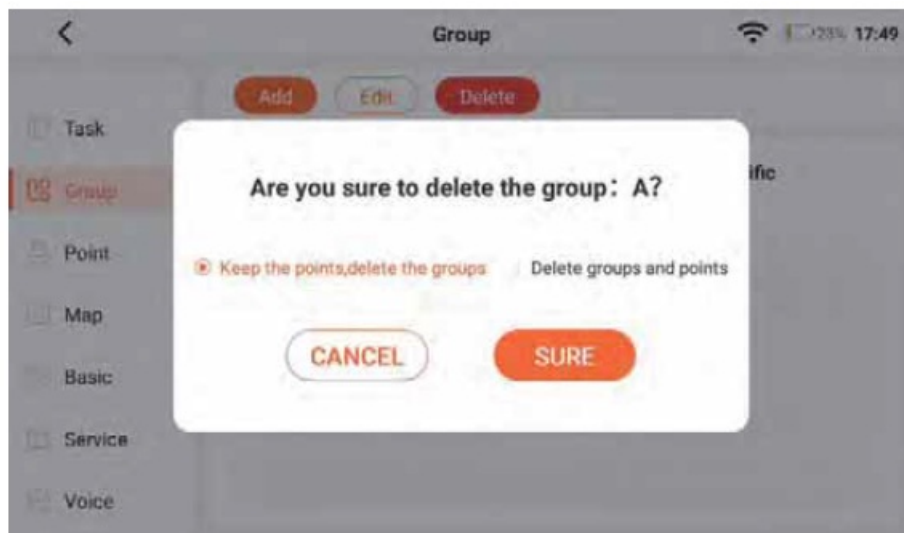
- After selecting [Group Management], you can view all current groups and the Sites under the groups, and groups can be added, deleted, and edited. Except for [Others] and [Specific Sites], 7 groups can be set at most.
- **Note:** Specific sites refer to charging piles and stopping sites

ADD GROUP



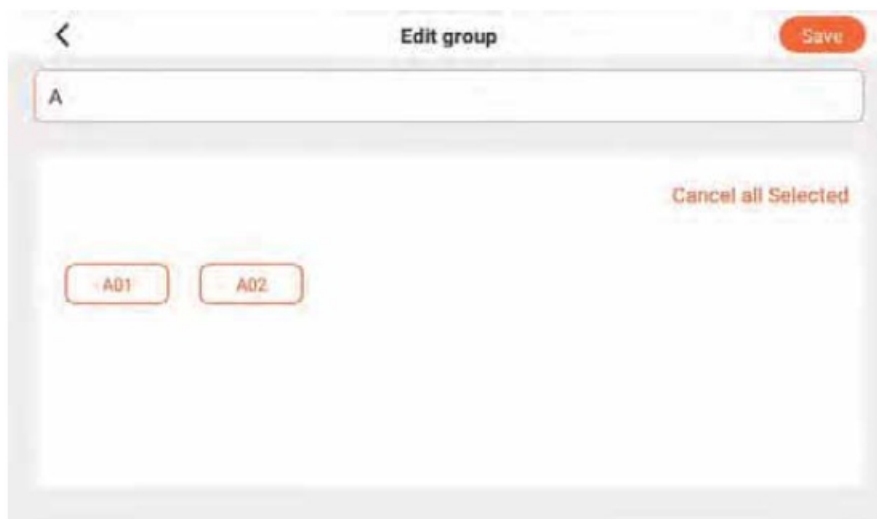
After tapping Add] and entering the group name in the input box, no steps will be displayed in the area at the bottom of the page, please select the site and add it to the group; tapping [Select All] to select all sites and add them to the group, and tap [Save] to add groups successfully.

Delete group



[Delete]; if you select “Keep sites, only delete group”, the group Will be deleted, and the sites under this group will automatically be added to [Other] group; if you select “Delete sites and group”, the sites and group will be deleted together; then tap OK to delete them successfully.

EDIT GROUP



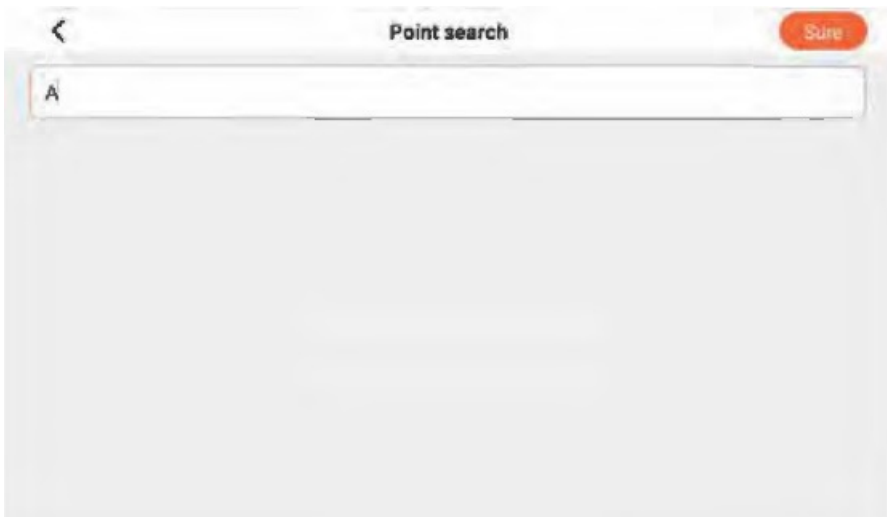
[Edit]; after modifying the current group name in the input box, the area at the bottom of the page will display all the sites under the group; after canceling the select ed state, the site will be moved out of the current group; after tapping [Deselect All], all sites will be moved out; tap Save and edit successfully.

Site Management



Select [Site Management] to enter the page of the site list, and tap [Refresh] to refresh the site list.

Search site Select



[Site Management] to enter the page of the site list, and tap [Refresh] to refresh the site list.



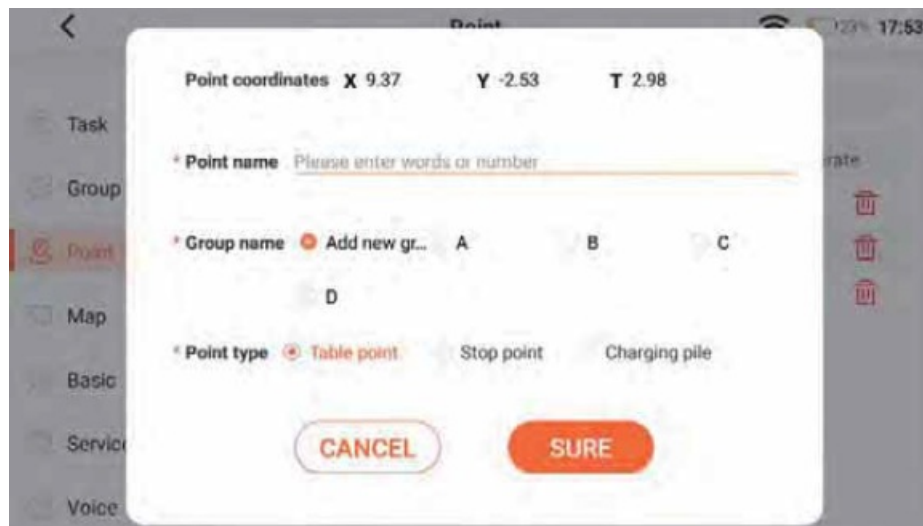
Screen site

After tapping all, the drop-down options will pop up, and then you can screen the sites based on site types.



Add site Tap

[New, enter the site name step by step on the new site page, select the group to which the site belongs; if you need to add a new group, tap [New Group] to enter the new group page. After selecting the site type, tap [OKJ to Complete adding a new site.



Note: When adding stops and charging piles, directly select [Stop] or [Charging Pill in place of site type, and the name of the site will be automatically filled in.

Delete site

Tap to delete a single site select some or all of the sites & tap (delete in batches) to delete multiple sites

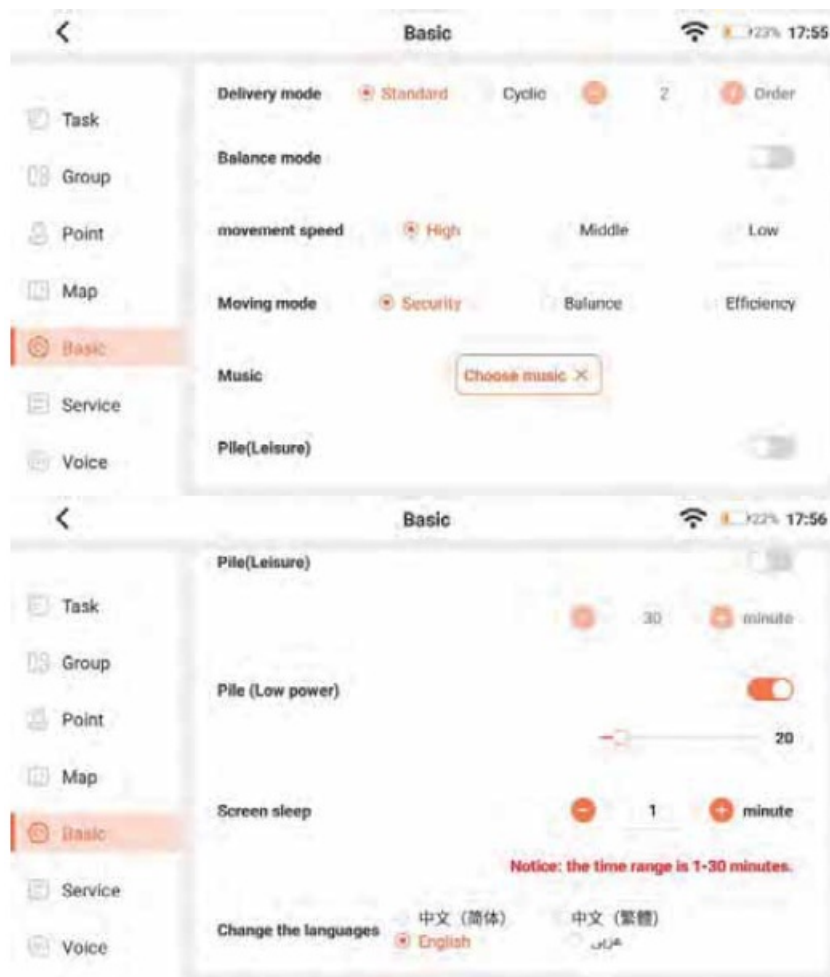


Map Management



Select [Map Management] to view the current map, zoom in or Out, and tap [Refresh] to refresh the map.

Basic management



- **Medal delivery mode**

- After selecting the standard mode, the robot will return to the dock after completing a delivery task; After selecting the cycle mode, you can configure the number of cycle delivery tasks

- **Balanced mode**

- After starting the stable mode, the robot will move forward steadily during the delivery process with higher stability. After starting the cycle mode, the number of cycle distribution tasks can be configured.

- **Music playback**

- Tap [Select Music] to select the music to be played during the dinner delivery task, and tap Delete.



- **Return to charging pile at idle:**

- Turn on [Return to Charging Pile at a level and set the time to return to the charging pile. When the

standby time of the device exceeds the set time, it will automatically return to the charging pile for charging, and the default time is 30 minutes.

- **Return to charging pile with low power:**

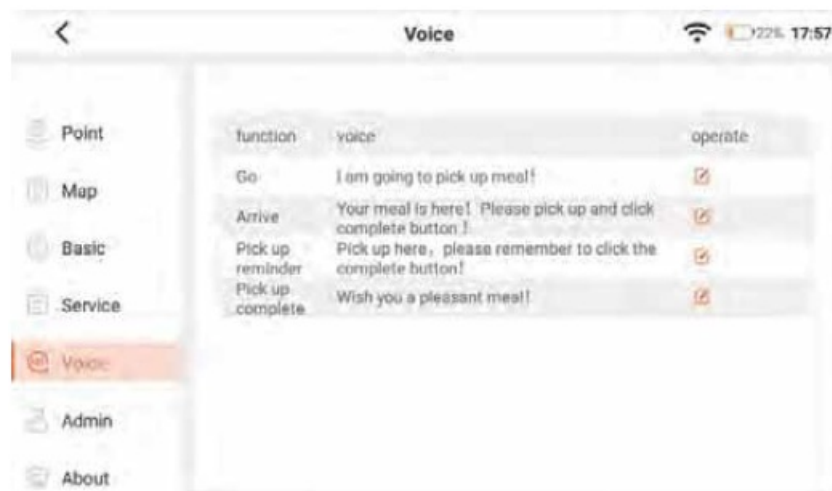
- Turn on Return to Charging Pile with Low Power), and set it to automatically return to the charging pile for charging when the power is lower than the set percentage. It can be set within the range from 10% to 90%. Switch language: Switch the software language between Simplified Chinese, Traditional Chinese, English, and Arabic.

SERVICE SETTING



- **Volume:** Drag the indicator bar to set the volume or voice announcements and music.
- **Lock virtual navigation bar:** The virtual navigation bar of the interface can be locked.

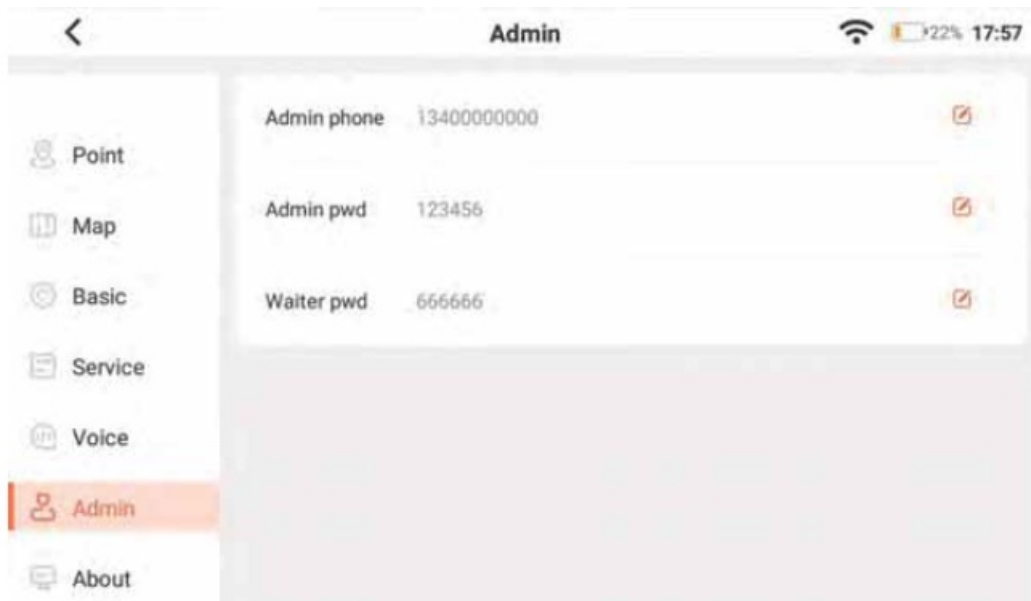
Voice setting



Select [Voice Settings to Configure the voice announcement of the robot under the four scenarios including go to deliver dinner, arrive at a designated table, remind the customers to take the dinner, complete taking the dinner by the customer; tap to edit the Sentence

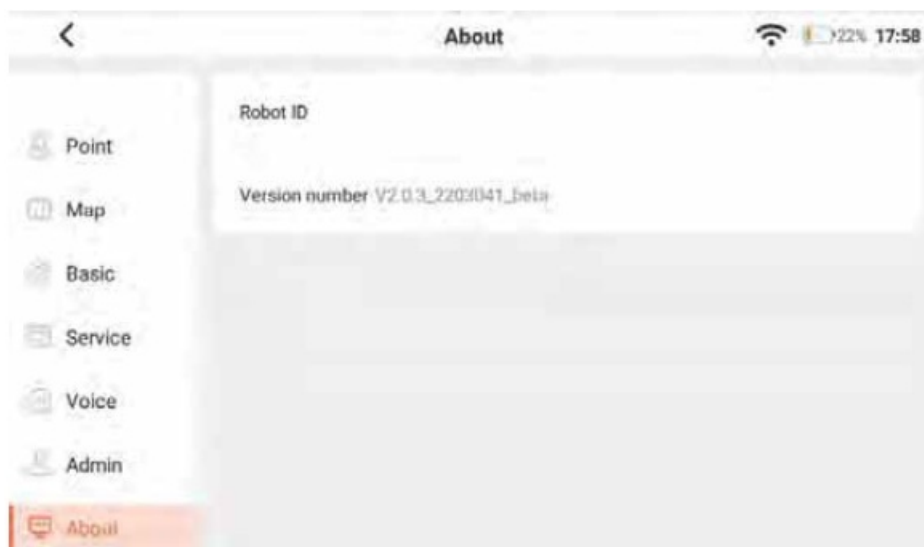


ADMINISTRATOR SETTING



- **Administrator Phone:** Used to call the administrator under special circumstances tap to edit.
- **Administrator password:** Used to enter the app background management page tap to edit
- **Serving staff password:** Used to cancel or modify the dinner delivery task tap to edit

About this product



- **Robot number:** It is the number uniquely determined for each robot.
- **Version number:** The software version number of the APP.

FCC compliance statement

This device complies with part 15 of the FCC Rules. Operation is subject to the following two conditions:

1. This device may not cause harmful interference, and (2) this device must accept any interference received, including interference that may cause undesired operation.

Note: This equipment has been tested and found to comply with the limits for a Class B digital device, pursuant to part 15 of the FCC Rules. These limits are designed to provide reasonable protection against harmful interference in a residential installation.

This equipment generates uses and can radiate radio frequency energy and, if not installed and used in accordance with the instructions, may cause harmful interference to radio communications. However, there is no guarantee that interference will not occur in a particular installation. If this equipment does cause harmful interference to radio or television reception, which can be determined by turning the equipment off and on, the user is encouraged to try to correct the interference by one or more of the following measures:

- Reorient or relocate the receiving antenna.
- Increase the separation between the equipment and receiver.
- Connect the equipment to an outlet on a circuit different from that to which the receiver is connected.

Consult the dealer O product not authorized by Shenzhen CIOT Robotics 0., LO Important: Changes or modifications to this product not authorized by Shenzhen CIOT Robotics Co., Ltd cOuld void the electromagnetic compatibility (EMC) and wireless compliance and negate your authority to operate the product. This product has demonstrated EMC compliance under conditions that included the use of compliant peripheral devices and shielded cables between system components. It is important that you use compliant peripheral devices and shielded cables between system components to reduce the possibility of causing interference to radios, televisions, and other electronic devices.

- **RF Exposure Statement:** To maintain compliance with FCC's RF exposure guidelines, This equipment should be installed and operated with a minimum distance between 20cm of the radiator of your body. Use only the supplied antenna.
- **FCC ID:** 2A5WH-DE1230B005F4

Documents / Resources

	<p>RobotLAB DE1230B Series Food Delivery Robot [pdf] User Manual DE1230B005F4, 2A5WH-DE1230B005F4, 2A5WHDE1230B005F4, DE1230B Series Food Delivery Robot, DE1230B Series, Food Delivery Robot</p>
---	---