



robosen G1 Edition Performance Bumblebee Robot User Guide

[Home](#) » [robosen](#) » robosen G1 Edition Performance Bumblebee Robot User Guide 

robosen G1 Edition Performance Bumblebee Robot



Contents

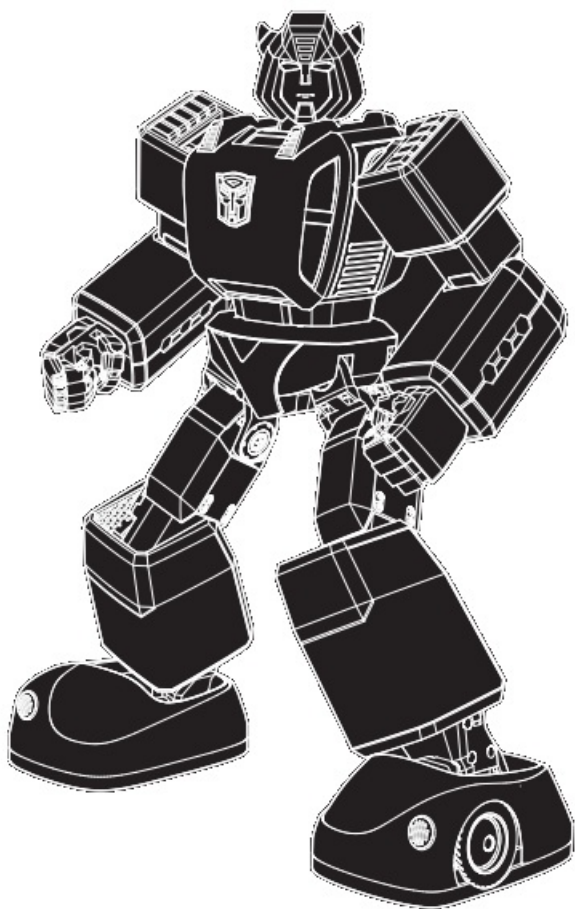
- [1 MEET ROBOSEN PERFORMANCE BUMBLEBEE](#)
- [2 PRODUCT SPECIFICATION](#)
- [3 BTN DESCRIPTION & FUNCTIONS](#)
- [4 DOWNLOAD THE APP](#)
- [5 CONNECT THE ROBOT](#)
- [6 START THE CONVERSATION](#)
- [7 CUSTOMERS SUPPORT](#)
- [8 Documents / Resources](#)
 - [8.1 References](#)
- [9 Related Posts](#)

MEET ROBOSEN PERFORMANCE BUMBLEBEE

Robosen Performance Bumblebee is an intelligent robot that comes integrated with features such as voice interaction and action programming.

This product offers a deep and immersive experience by restoring the original sound, appearance, and character

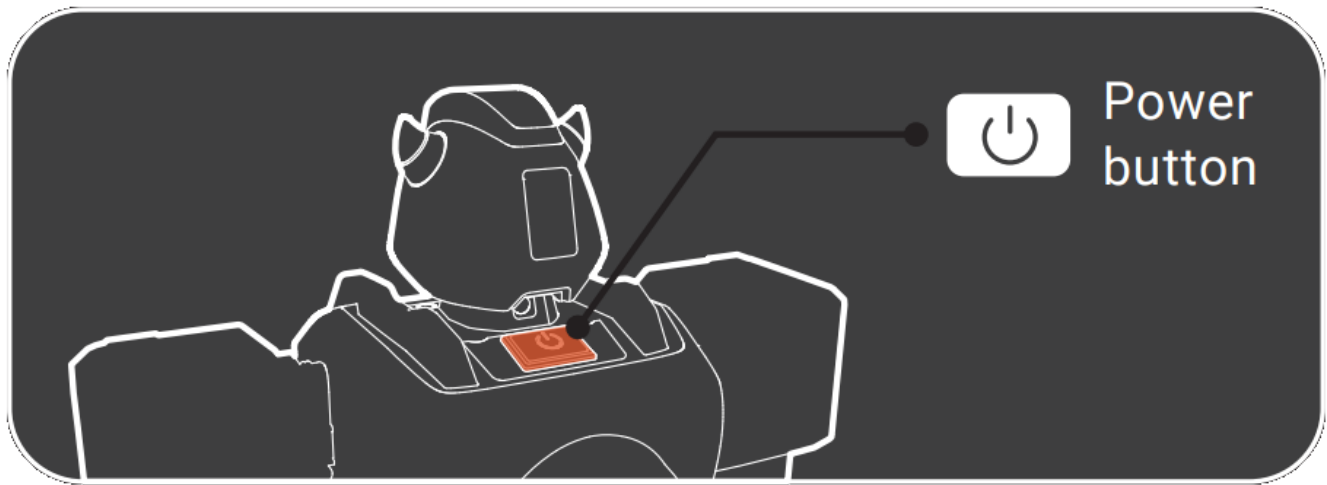
of the role. It is also equipped with advanced speech recognition techniques and interactive capabilities, allowing for more accurate identification of your intentions and providing you with an enjoyable robot-based interaction and programming experience.



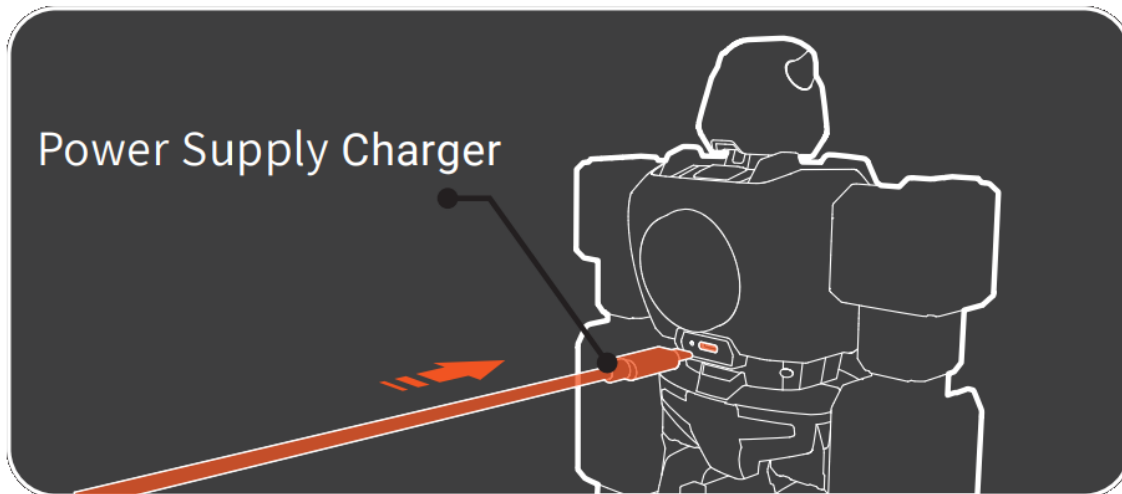
PRODUCT SPECIFICATION

Dimensions	6.42*3.94*13.39in
Weight	1.2kg(42.33oz)
Material	ABS, aluminum alloy, zinc alloy, nylon glass fiber, polycarbonate
Servo Motor	17 Servo Motors (Head*1+Shoulder blade*2+Shoulder*2+Foot*2+Hip*2+Lower ar m*2+Knee*2+Thigh*2+Ankle*2)
Wireless Connection	Bluetooth 5.0
Control Method	Mobile app, Voice Control
External Ports	Type-c
Battery Capacity	1460mAh lithium-ion battery

BTN DESCRIPTION & FUNCTIONS



1. In the power-off state, press the power button on the back of the head of the robot. When the lights in the eyes and feet of the robot are on, and the robot says “Hiya friend! Bumblebee here.”, the robot is powered on.
2. In the power-on state, press the power button on the back of the head of the robot. When the lights in the eyes and feet of the robot are off, and the robot says “See you later!”, the robot is powered off.
3. When the robot is turned on, the robot is in the Bluetooth discoverable state. You can connect and control the robot through the app and play the programming mode.
4. Quickly press the power button twice to disconnect the robot from the currently connected app (if any). The robot’s Bluetooth is discoverable and the robot can be connected to other apps via Bluetooth.
5. In the power-on state, short press the power button for 1 second to turn off or turn on the microphone.



Connect the charger to the robot's Type-C charging port on the back of the robot. Plug in the charger to an electrical outlet, then the robot starts to charge.

The LED indicator at the back of the robot will turn red when charging and turn off once the battery is fully charged.

DOWNLOAD THE APP

To install the “Robosen Performance Bumblebee app” and bind the robot using the app, please scan the QR code.



app download QR code

*The latest version of iOS and Android operating systems is recommended.

CONNECT THE ROBOT

1. Open the app, click “agree and continue” to enter the Bluetooth search interface.
2. Select and connect your robot according to the instructions on the app.

START THE CONVERSATION

You can say “Hey, Bumblebee” to wake the robot, and when the robot replies “How’s it going?”, you can start your fantasy journey!

For more product features, please visit Robosen official website: www.robosen.com

CUSTOMERS SUPPORT



app download QR code

To install the “Robosen Performance Bumblebee app” and bind the robot using the app, please scan the QR code.



*The latest version of iOS and Android operating systems is recommended.



Documents / Resources

	<p>robosen G1 Edition Performance Bumblebee Robot [pdf] User Guide DHFP, G1 Edition, G1 Edition Performance Bumblebee Robot, Performance Bumblebee Robot, Bumblebee Robot, Robot</p>
--	--

References

-  [Robosen - Official Website](#)
-  [Robosen - Official Website](#)