



roborock QREVO Robot Vacuum with Multifunctional Dock Instructions

[Home](#) » [Roborock](#) » roborock QREVO Robot Vacuum with Multifunctional Dock Instructions 

roborock QREVO Robot Vacuum with Multifunctional Dock Instructions

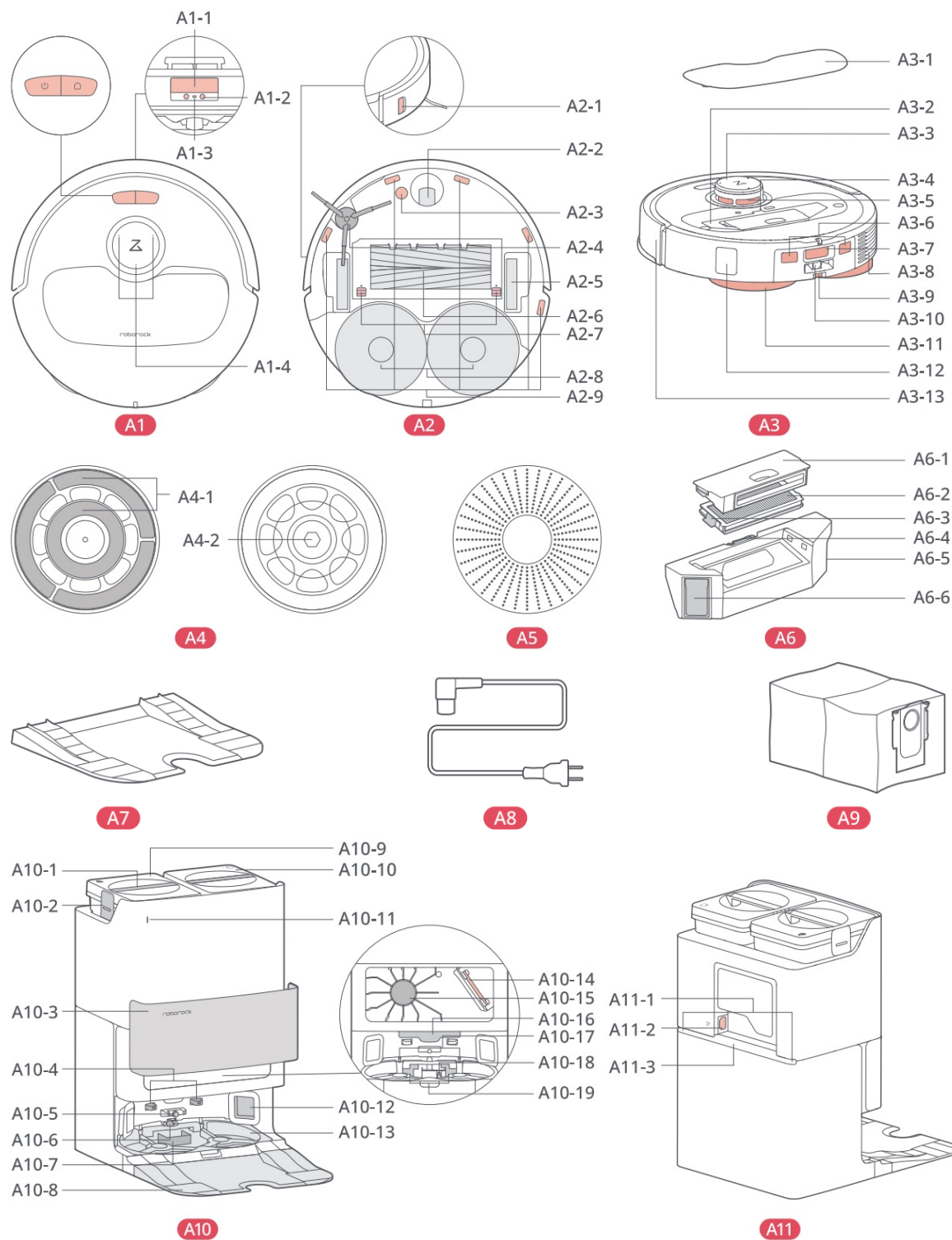


Contents

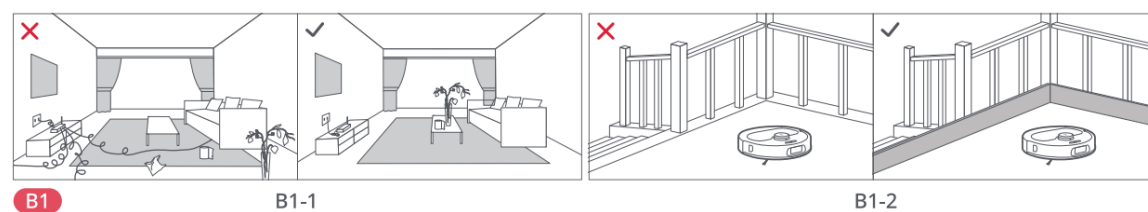
- [1 Instructions](#)
- [2 Documents / Resources](#)
 - [2.1 References](#)
- [3 Related Posts](#)

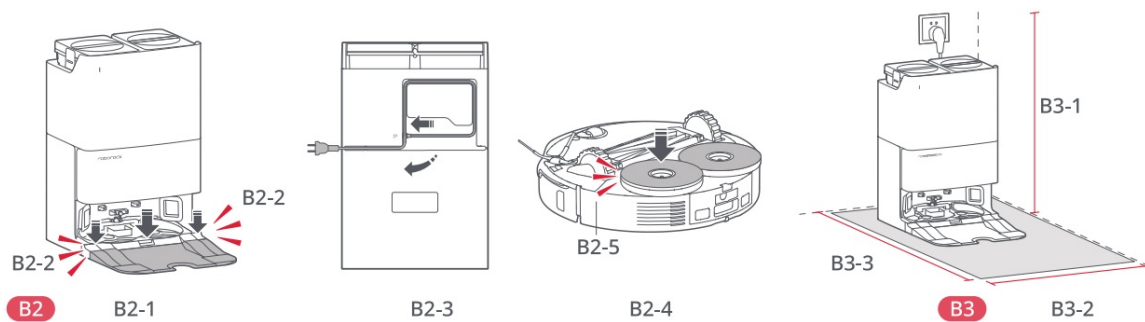
Instructions

A :

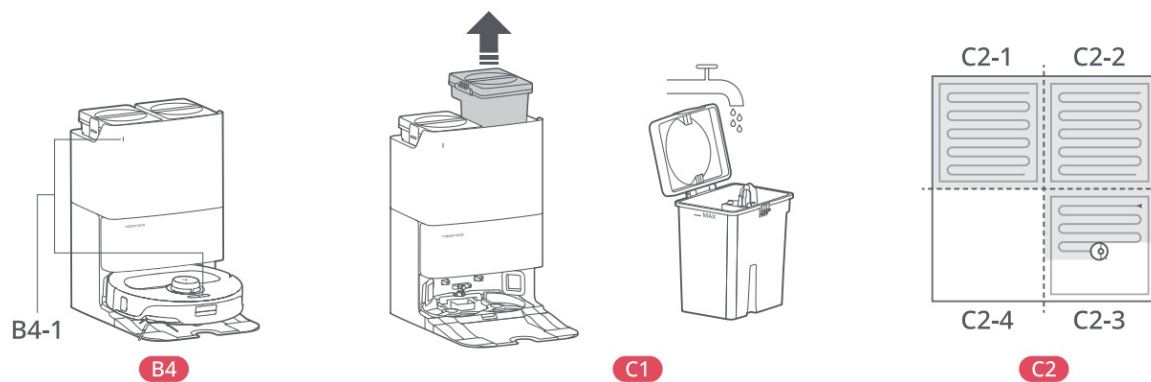


B :

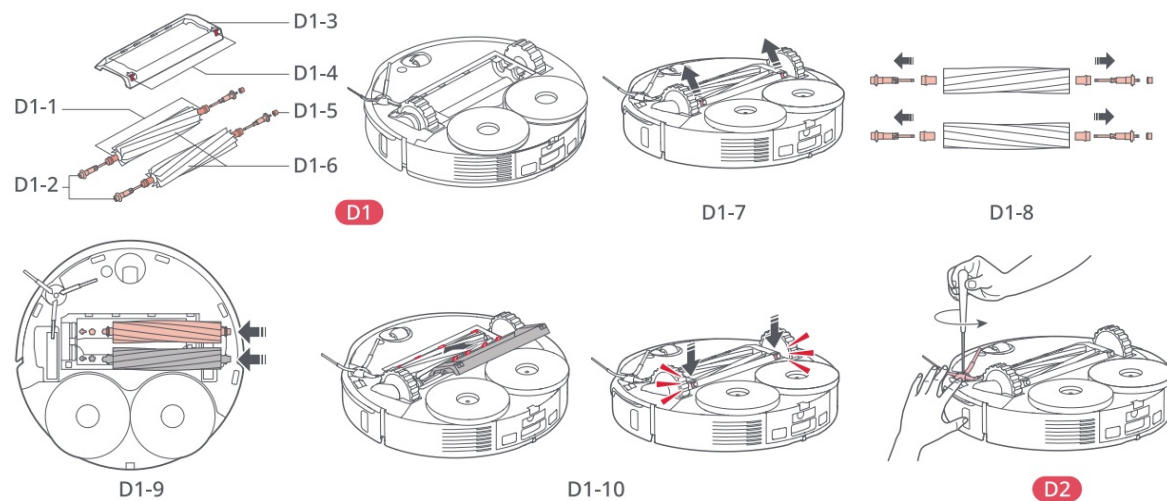




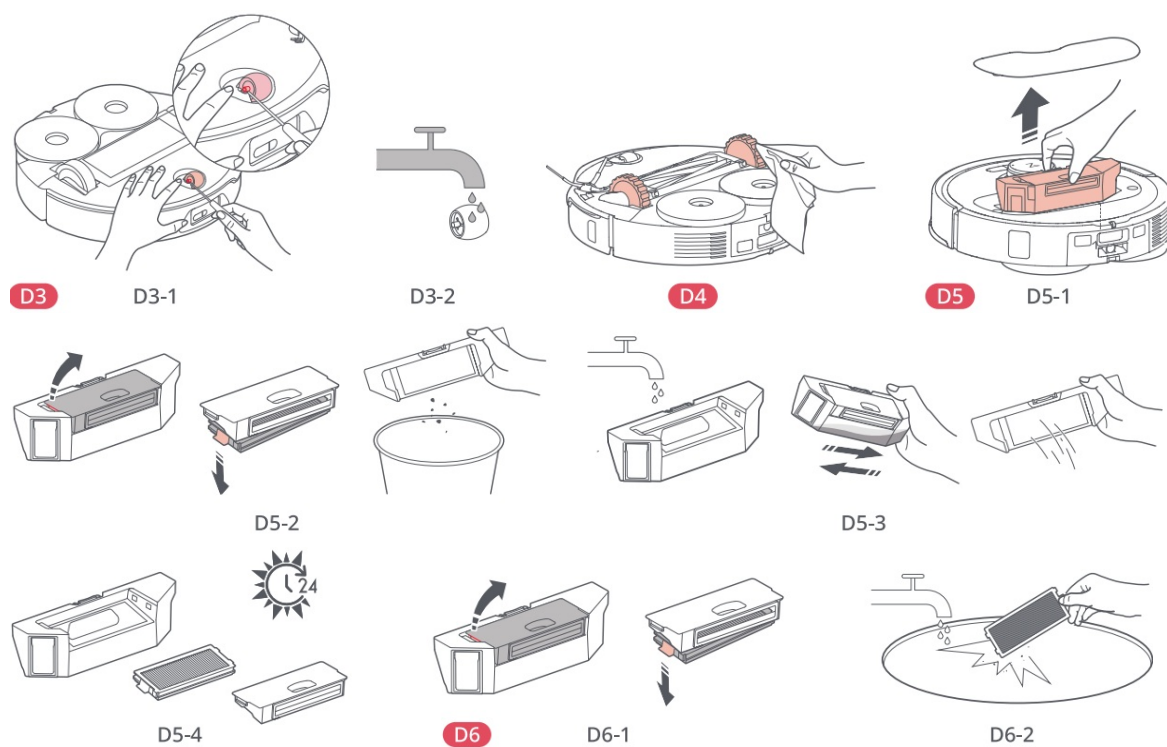
C :

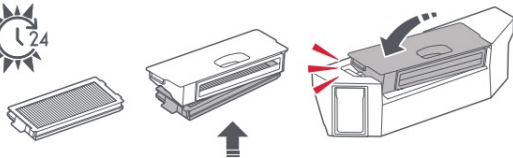


D :

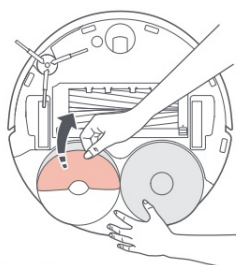


D :



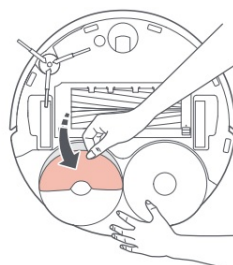


D6-3

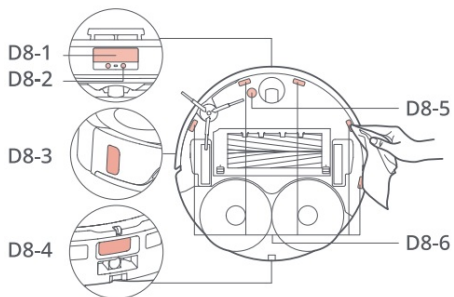


D7

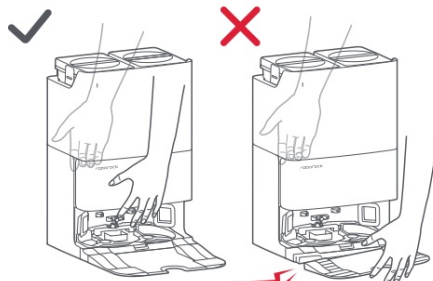
D7-1



D7-2



D8

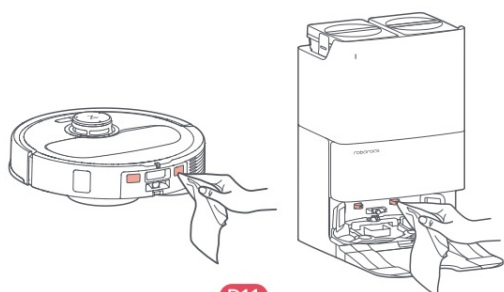


D9

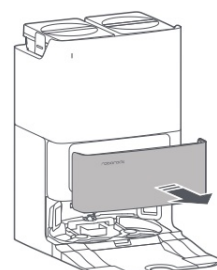


D10

D :

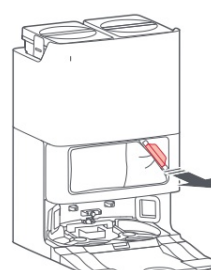


D11

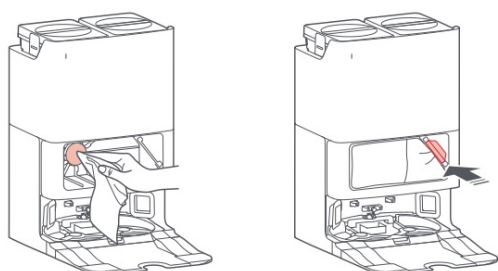


D12

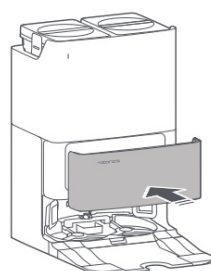
D12-1



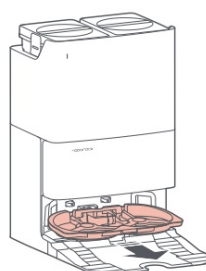
D12-2



D12-3

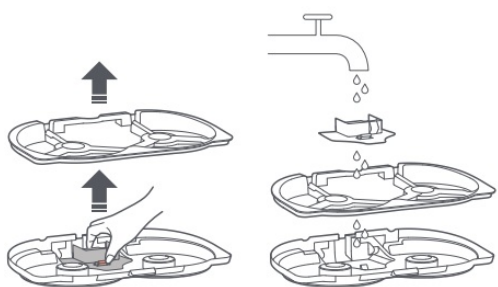


D12-4

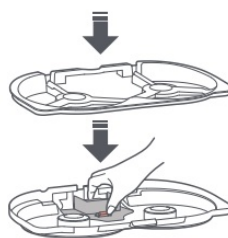


D13

D13-1



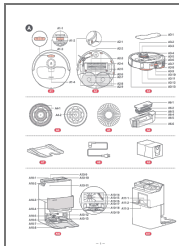
D13-2



D13-3



Documents / Resources



[roborock QREVO Robot Vacuum with Multifunctional Dock](#) [pdf] Instructions
QREVO Robot Vacuum with Multifunctional Dock, QREVO, Robot Vacuum with Multifunctional Dock, Multifunctional Dock

References

- [User Manual](#)

Manuals+. [Privacy Policy](#)

This website is an independent publication and is neither affiliated with nor endorsed by any of the trademark owners. The "Bluetooth®" word mark and logos are registered trademarks owned by Bluetooth SIG, Inc. The "Wi-Fi®" word mark and logos are registered trademarks owned by the Wi-Fi Alliance. Any use of these marks on this website does not imply any affiliation with or endorsement.