

Use Of Alexa



How do I use Alexa to control Roborock? Instructions

[Home](#) » [Roborock](#) » How do I use Alexa to control Roborock? Instructions 

How do I use Alexa to control Roborock? Instructions

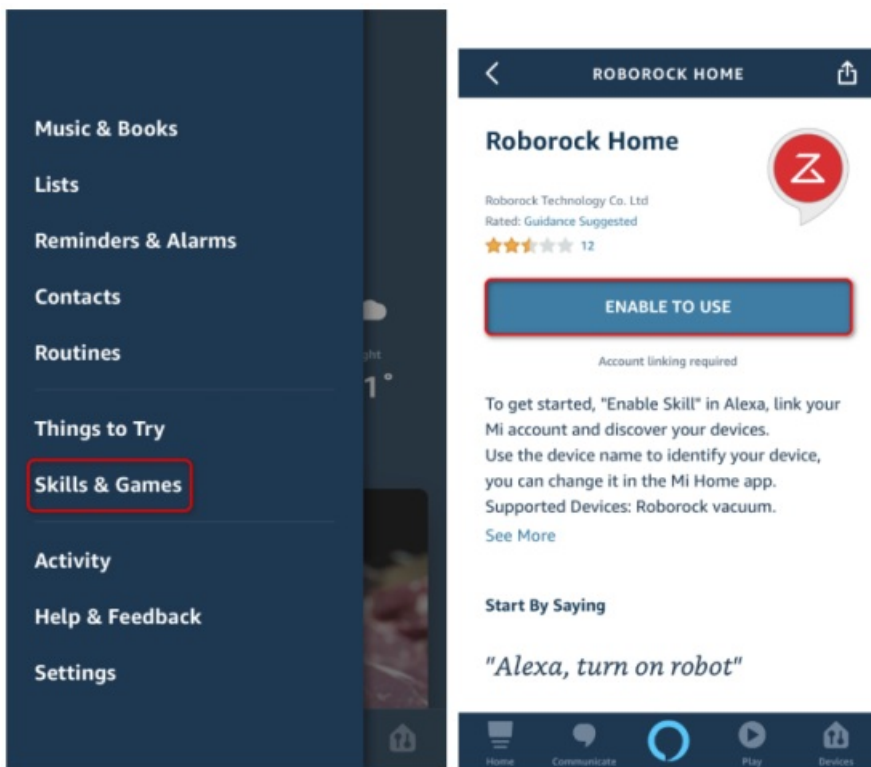
Note: Make sure your robot is added and online on app Mi Home first.

Contents

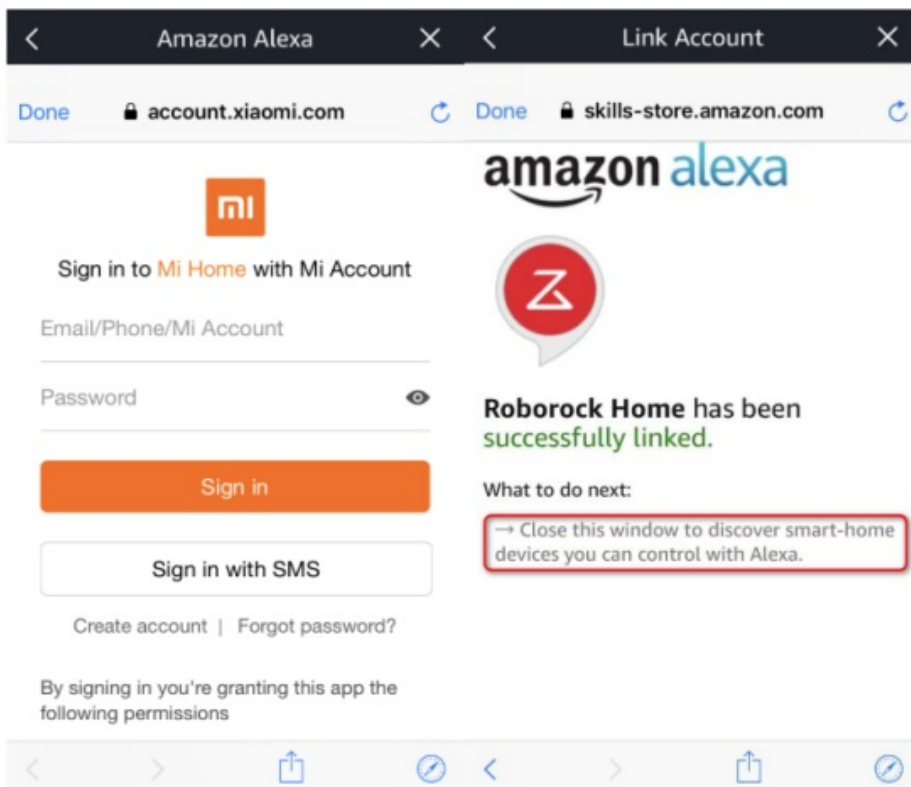
- [1 Alexa Instructions](#)
- [2 Documents / Resources](#)
- [3 Related Posts](#)

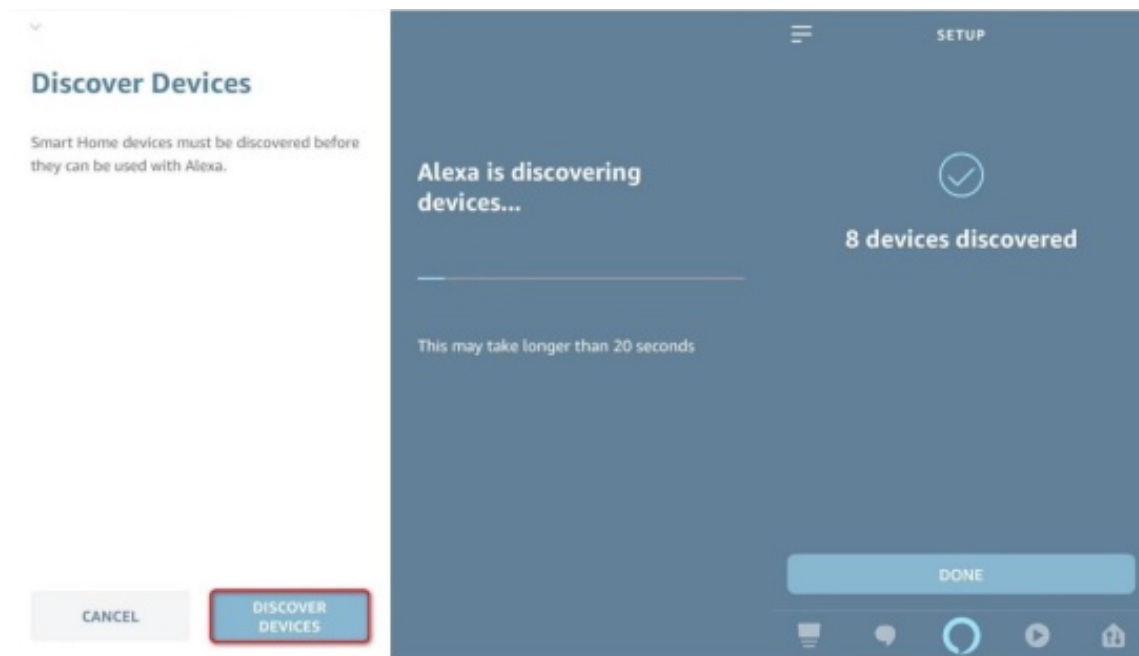
Alexa Instructions

1. Go to “Skills & Games” then search for “Roborock Home”

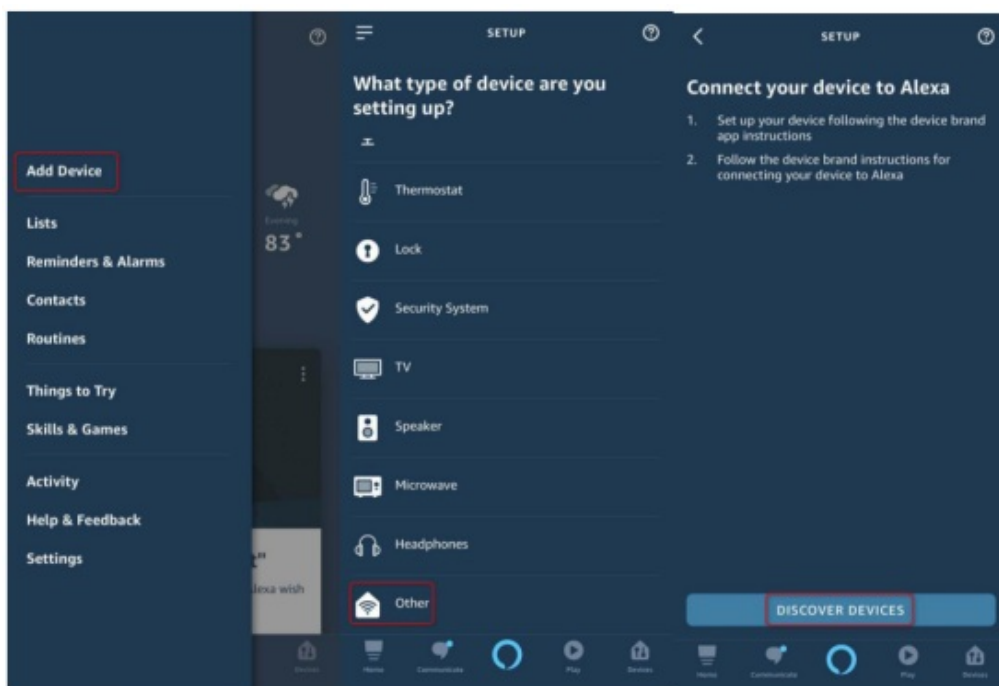


2. Link your Mi Home app to Alexa to discover devices in your Mi Home account that Alexa can control.



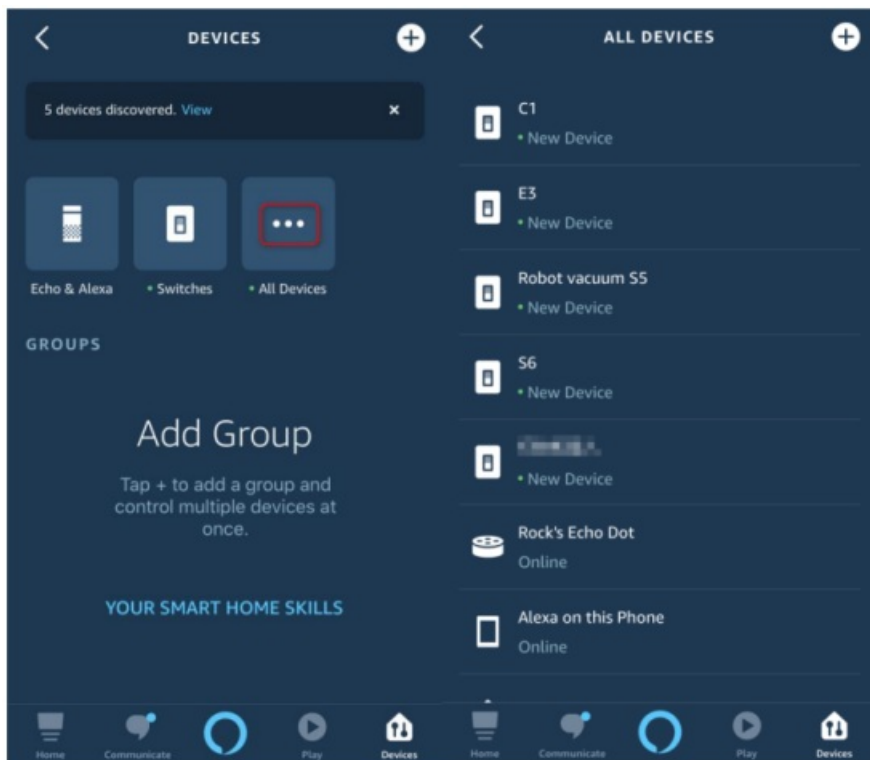


3. If Alexa does not show “discover devices” option, go to setting to discover manually.




4. Go to devices list and check if the robot appears and now you can use your Alexa smart speakers to start and stop cleaning.

Note: At present, Alexa smart speaker could only start and stop robot by skill Roborock Home.



Documents / Resources

	<p>roborock How do I use Alexa to control Roborock? [pdf] Instructions How do I use Alexa to control Roborock, Roborock Home</p>
---	--

Manuals+.