



robin RDC0801-11 Digital Day Clock 2.0 User Manual

[Home](#) » [ROBIN](#) » robin RDC0801-11 Digital Day Clock 2.0 User Manual 

*robin RDC0801-11 Digital Day Clock
2.0 User Manual*

hello.

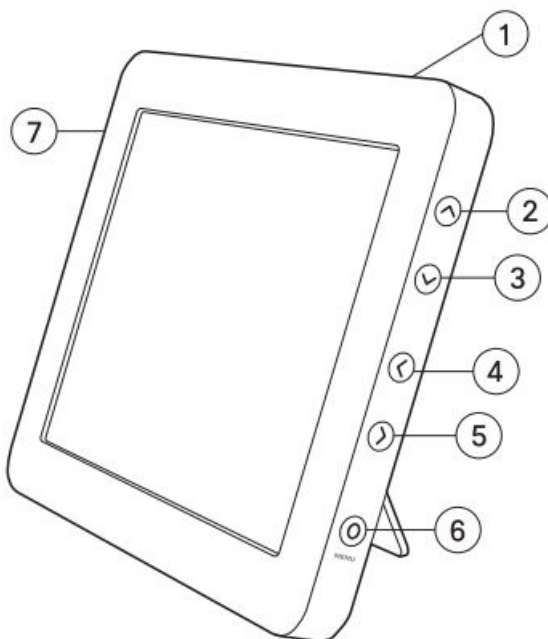


Contents

- 1 Let's get started.
- 2 Plugging in.
- 3 Choose your language.
- 4 Daylight Saving Time.
- 5 Set the time.
- 6 Set the date.
- 7 Good to go.
- 8 Dimming Screen.
- 9 Set an alarm.
- 10 Set a repeating alarm.
- 11 Editing alarms.
- 12 Set a reminder.
- 13 Set a recurring reminder.
- 14 Choose a theme.
- 15 Adjusting brightness.
- 16 Auto dimming.
- 17 Changing Date & Time.
- 18 Talking Clock.
- 19 Chime.
- 20 Volume.
- 21 Language.
- 22 Lock Mode.
- 23 Factory reset.
- 24 Contact & Warranty.
- 25 Health & Safety.
- 26 Certifications.
- 27 Documents / Resources
- 28 Related Posts

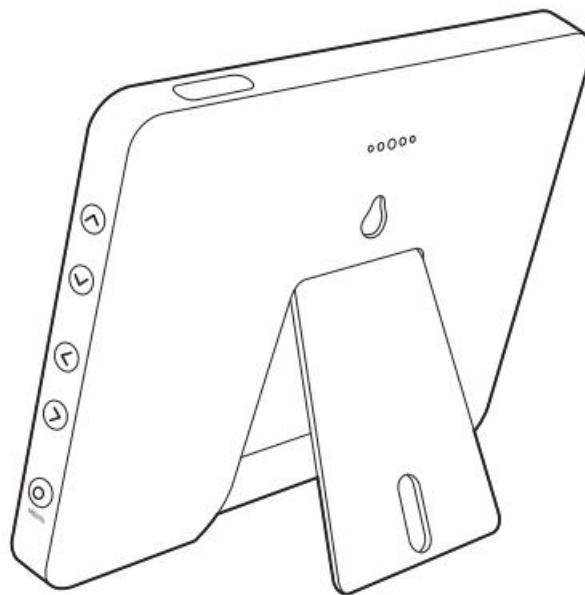
Let's get started.

Thank you for purchasing the Robin Day Clock. Let's start by getting acquainted with the product.



1. Snooze/Talk
2. Up
3. Down
4. Left
5. Right
6. Menu/Select
7. Back/Dim

Plugging in.



Plug in the power adapter and connect the charging cable to the rear of the Day Clock underneath the stand. The Day Clock will start up right away.

You will then be guided through the steps to set up your Day Clock.

Choose your language.



Select your language from the list of options provided and press the MENU/SELECT button to confirm.

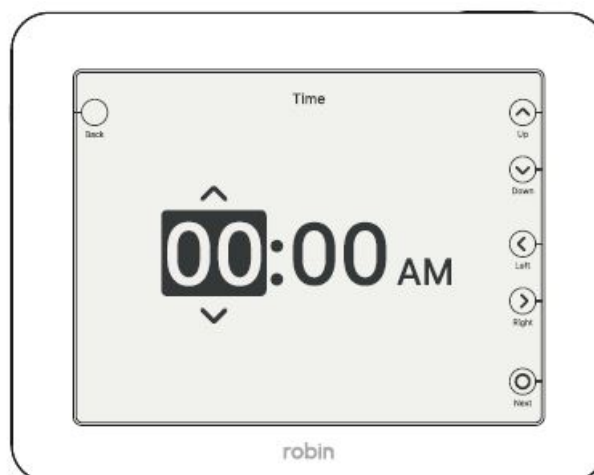
Daylight Saving Time.



In order for your Day Clock to remain at the correct time, you need to confirm if your region uses Daylight Saving Time or not.

Select from the options which region you are in and press MENU/SELECT to confirm.

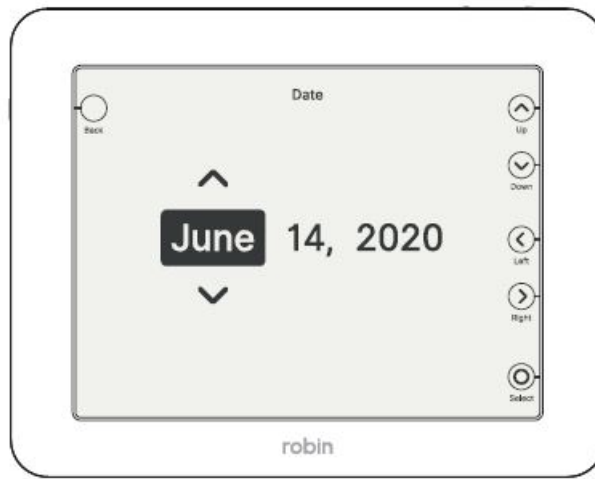
Set the time.



Use the UP, DOWN, LEFT and RIGHT buttons to set the time on the clock to the correct time.

Press MENU/SELECT to confirm the time.

Set the date.



Use the UP, DOWN, LEFT and RIGHT buttons to set the date on the clock to the correct date.

Press MENU/SELECT to confirm the date.

Good to go.



That's it!

You are now set up to leave the Day Clock displaying clearly the day, time and date for everyone to see.

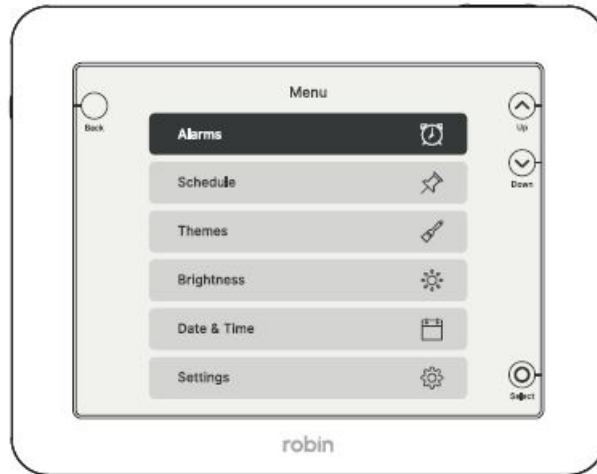
Dimming Screen.



One press of the BACK/DIM button on the side of the Day Clock will dim the screen to 10% brightness for four hours at a time. This can be useful for low light environments or having a short nap during the day.

Press the BACK/DIM button again to increase the brightness of the screen back to the original setting.

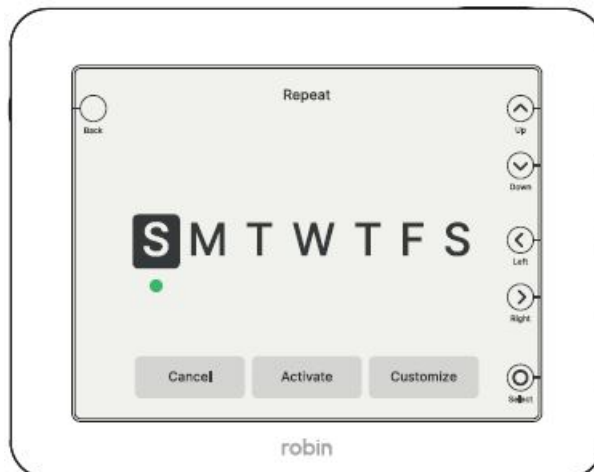
Set an alarm.



To set an Alarm, use the MENU/SELECT button to access the full list of Day Clock features. Use the UP and DOWN buttons to navigate the menu. Highlight 'Alarms' and press the MENU/SELECT button to select.

Select 'Add new alarm' and use the UP, DOWN, LEFT and RIGHT buttons to select the time you want your alarm set for. Press the MENU/SELECT button to confirm the time.

Set a repeating alarm.



You can create a repeating alarm by selecting more than one day of the week. Use the LEFT and RIGHT buttons to highlight the days of the week you wish the alarm to be set for.

Once you have chosen your days for the alarm, use the UP, DOWN, LEFT and RIGHT buttons to select either 'activate' or 'customize'

Activate will set your alarms using the default settings on the Day Clock. Customize will allow you to choose the settings for your alarm such as; length, volume, sounds, snooze ON/OFF and blinking screen ON/OFF. Use the navigation buttons to customize these settings and activate the alarm.

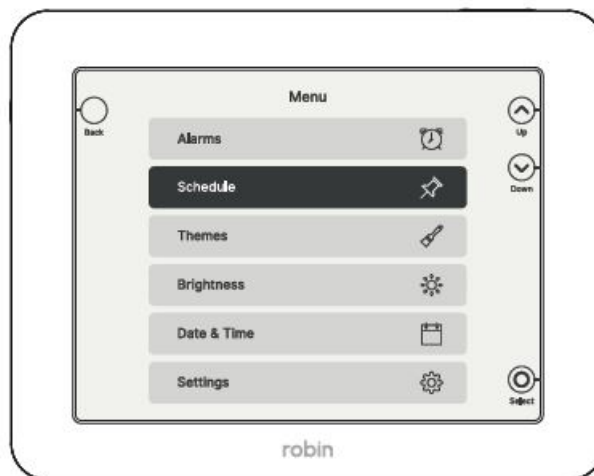
Editing alarms.



To edit an Alarm, use the MENU/SELECT button to access the full list of Day Clock features. Use the UP and DOWN buttons to navigate the menu. Highlight 'Alarms' and press the MENU/SELECT button to select.

Select your alarm that you wish to edit using the UP and DOWN buttons and use the LEFT and RIGHT buttons to choose between either on, off, edit or delete.

Set a reminder.

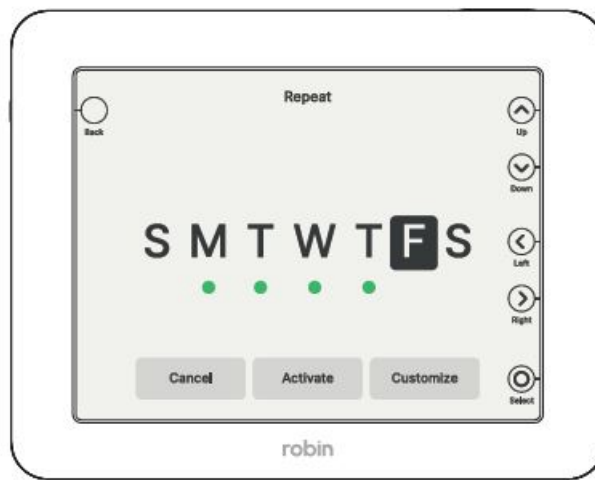


To schedule a Reminder, use the MENU/SELECT button to access the full list of Day Clock features. Use the UP and DOWN buttons to navigate the menu. Highlight 'Schedule' and press the MENU/SELECT button to select.

Select 'Add new event' and use the UP and DOWN buttons to choose which type of reminder you would like to schedule. Press the MENU/SELECT button to confirm the type of reminder.

Use the UP and DOWN buttons to navigate the options of programmed messages to display on the screen, or use the 'Write your own message' feature to access the on screen keyboard and create your own text to display.

Set a recurring reminder.

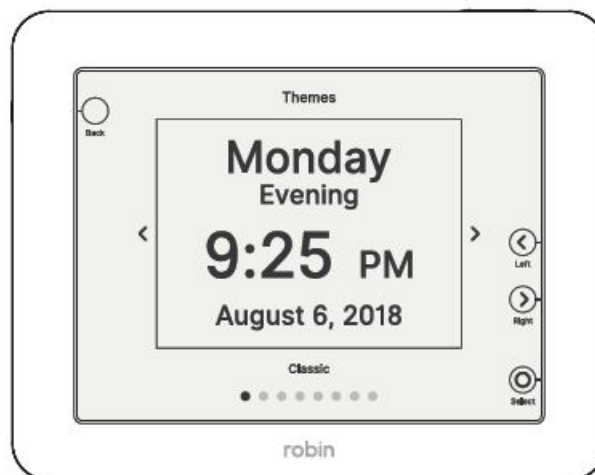


Once you have selected your reminder, you can schedule the reminder as a 'One time event' or a 'Recurring event'. Use the navigation buttons to first select the time of the reminder and then the days of the reminder if you are setting a 'Recurring event'.

Once you have chosen your days for the alarm, use the UP, DOWN, LEFT and RIGHT buttons to select either 'activate' or 'customize'

Activate will set your reminders using the default settings on the Day Clock. Customize will allow you to choose the settings for your reminders such as; length, volume, sounds, snooze ON/OFF and blinking screen ON/OFF. Use the navigation buttons to customize these settings and activate the reminder.

Choose a theme.

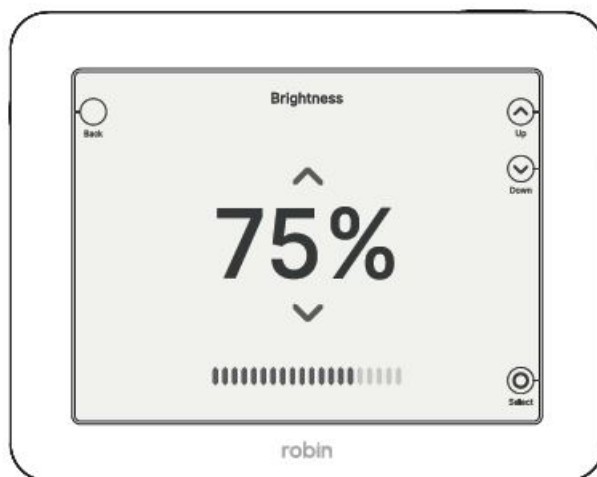


To change the display appearance on your Day Clock, use the MENU/SELECT button to access the full list of Day Clock features. Use the UP and DOWN buttons to navigate the menu. Highlight 'Themes' and press the MENU/SELECT button to select.

Use the LEFT and RIGHT buttons to select a display theme from the options provided, or select custom to create your own display.

Within the custom setting you can choose to display the following; date, period of the day, clock format, time format, date format, text colour and background color. Use the MENU/ SELECT button to save the theme.

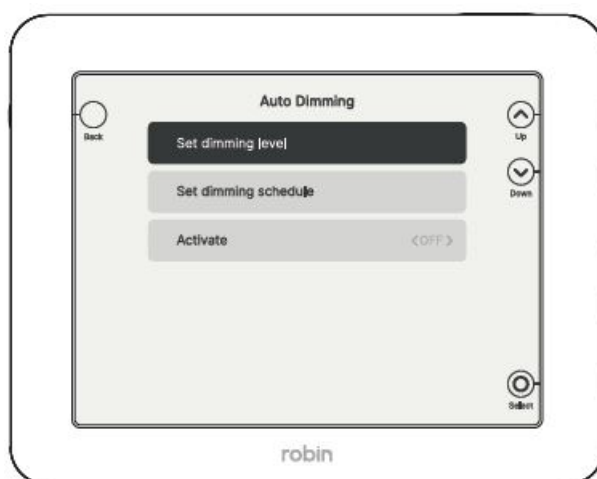
Adjusting brightness.



To change the Brightness on your Day Clock, use the MENU/SELECT button to access the full list of Day Clock features. Use the UP and DOWN buttons to navigate the menu. Highlight 'Brightness' and press the MENU/SELECT button to select.

Select 'Set brightness' and use the UP and DOWN buttons to increase or decrease the brightness of the display.

Auto dimming.

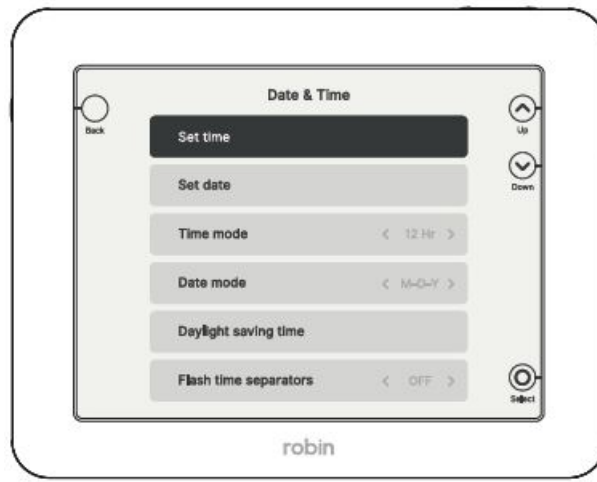


Select 'Auto dimming' to enable the auto dimming feature within the Day Clock. Select 'Set dimming level' to adjust the level of brightness you would like the display to reduce to.

Select 'Set dimming schedule' to programme the start time and end time for the duration of time you would like the display to reduce brightness for.

Highlight 'Activate' and use the LEFT and RIGHT buttons to enable or disable the auto dimming feature in the Day Clock.

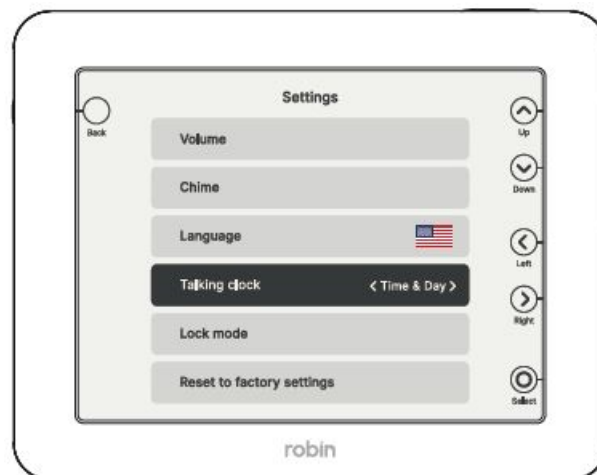
Changing Date & Time.



To change the Date & Time on your Day Clock, use the MENU button to access the full list of Day Clock features. Use the UP and DOWN buttons to navigate the menu. 'Date & Time' and press the MENU/SELECT button to select.

Use the UP and DOWN buttons to navigate the menu and adjust the following: time, date, time mode, date mode and daylight saving time and flashing time separator.

Talking Clock.

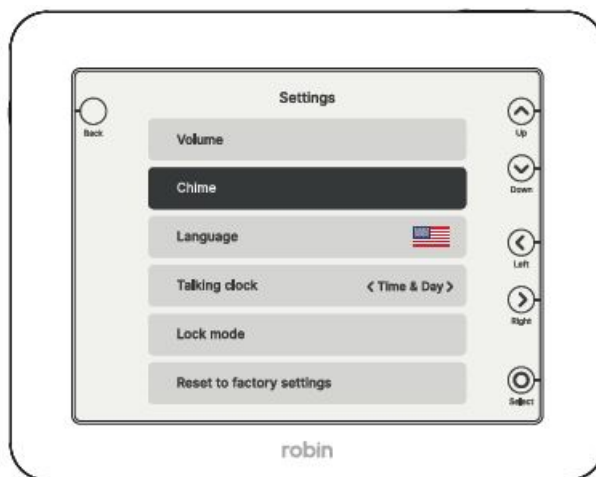


At any time of the day, by pressing the SNOOZE/TALK button the clock will announce what is on the screen in your chosen format.

To adjust the Talking Clock feature, use the MENU/SELECT button to access the full list of Day Clock features. Use the UP and DOWN buttons to navigate the menu. Highlight 'Settings' and press the MENU/SELECT button to select.

Use the UP and DOWN buttons to navigate the menu and use the LEFT and RIGHT buttons to select either 'Time & Day' or 'Time, Day & Date' for the talking clock to announce.

Chime.



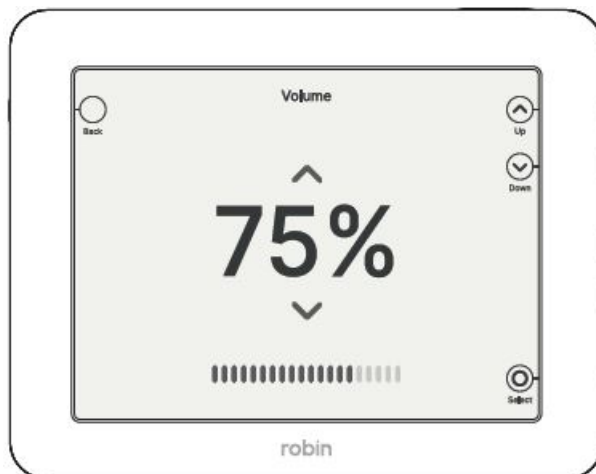
Enabling the Chime feature in your Day Clock will periodically play a sound to draw attention to the Day Clock display.

To enable the Chime feature use the MENU/SELECT button to access the full list of Day Clock features. Use the UP and DOWN buttons to navigate the menu. Highlight 'Settings' and press the MENU/SELECT button to select.

Use the UP and DOWN buttons to navigate the menu and highlight 'Chime'. Press the MENU/SELECT button to select.

Use the navigation buttons to adjust the following: sounds, recurrence, duration and activation.

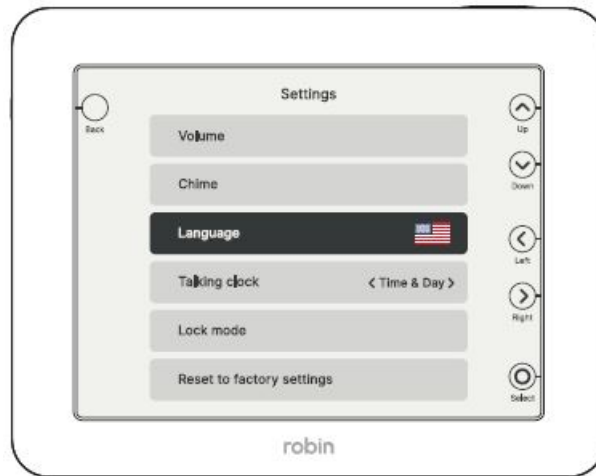
Volume.



To adjust the Volume on your Day Clock, use the MENU/SELECT button to access the full list of Day Clock features. Use the UP and DOWN buttons to navigate the menu. Highlight 'Settings' and press the MENU/SELECT button to select.

Use the UP and DOWN buttons to navigate the menu and adjust the following volumes: alarm volume, chime volume and talking clock volume.

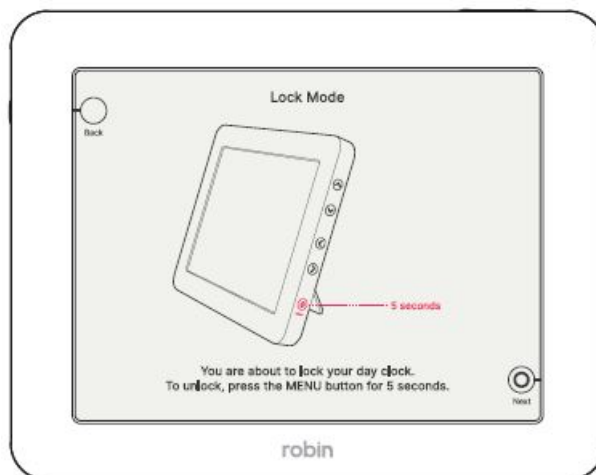
Language.



To change the Language on your Day Clock, use the MENU/SELECT button to access the full list of Day Clock features. Use the UP and DOWN buttons to navigate the menu. Highlight 'Settings' and press the MENU/SELECT button to select.

Use the UP and DOWN buttons to navigate the menu and select a language from the available options. Press the MENU/SELECT button to confirm the chosen language.

Lock Mode.



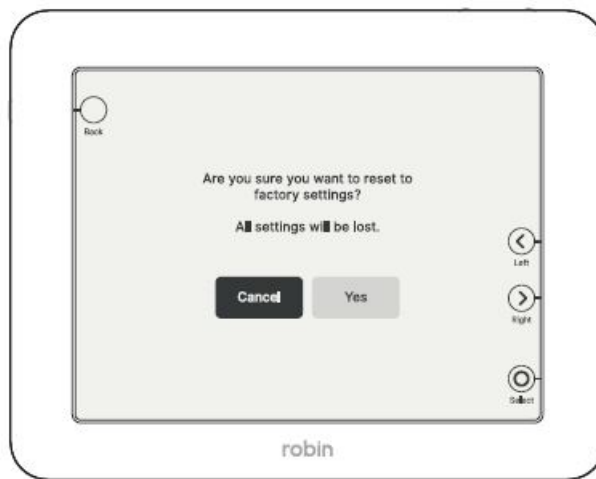
Lock Mode will disable all button functions except from the SNOOZE/TALK button and BACK/ button on your Day Clock, so that no settings are adjusted accidentally.

To enable the Lock Mode on your Day Clock, the MENU/SELECT button to access the full list of Day Clock features. Use the UP and DOWN buttons to navigate the menu. Highlight 'Settings' and press the MENU/SELECT button to select.

Use the UP and DOWN buttons to navigate the menu and press the MENU button to select Lock Mode Press the MENU/SELECT button again to enable Lock Mode.

To disable Lock Mode, press and hold the MENU/SELECT button for 5 seconds.

Factory reset.



To action a Factory Reset on your Day Clock, use the MENU/SELECT button to access the full list of Day Clock features. Use the UP and DOWN buttons to navigate the menu. Highlight 'Settings' and press the MENU/SELECT button to select.

Use the UP and DOWN buttons to navigate the menu and press the MENU/SELECT button to select 'Reset to factory settings'. Press the MENU/SELECT button select and use the LEFT and RIGHT buttons to confirm the reset to factory settings.

PLEASE NOTE: All settings Including customized alarms, schedules and display formats will be lost when actioning a factory reset.

Contact & Warranty.

Nothing is more important to us than your complete satisfaction, so if there is anything that we can do to better your experience please let us know by contacting support@robinclear.com

Support Team: +1 888-762-4620 For online help and support, please visit www.robinclear.com

Register your 1 year warranty at robinclear.com/warranty within 7 days of purchase.

If there's any issue at all with the product, please contact us and we will replace it right away, no questions asked. That's our promise.

Health & Safety.

Basic Safety: To avoid damaging your Day Clock, accessories or any connected devices, and to reduce the risk of personal injury, discomfort, property damage or other potential hazards, follow these precautions below.

Handle your Robin Day Clock with care. You may damage the device if you disassemble, drop, bend, burn, crush or puncture your device. Using a damaged device may cause overheating or injury. Do not expose your Robin Day Clock to liquids, which can cause a short circuit and lead to damage or overheating. If your device gets wet, do not attempt to dry it using an external heat source.

Make sure the power adapter and device are well ventilated when in use. Using damaged cables or power adapters, or using your device when moisture is present, can cause fire, electric shock, injury or damage to the device or other property.

When using the Robin Day Clock, make sure the power adapter is plugged into a nearby socket and is easily

accessible. Only use your device with the included power adapter and cable, or compatible accessories provided by Robin Ltd. Failure to use compatible accessories can cause fire, electric shock, injury or damage to the device and the accessories.

Maintain a distance of at least 20cm from your body to the device to be consistent with how the device is tested for compliance with European/US/Canadian RF exposure requirements.

The USB port in the back of the device is for providing manual updates to the Day Clock only and should not be used to power third party devices or accessories.

Certifications.

RoHS Notice

Robin Ltd has conformed and this product conforms, where applicable, to the European Union's Directive 2011/65/EU on Restrictions of Hazardous Substances (RoHS)

Product Disposal Instructions

The symbol shown on the product and packaging means that the product is classed as Electrical or Electrical Equipment and should not be disposed with other household or commercial waste at the end of its working life. The Waste of Electrical and Electronic Equipment (WEEE) Directive (2002/96/EC) has been put in place to recycle products using best available recycling and recovery techniques to minimise the impact on the environment, treat any hazardous substances and avoid increasing landfill. Product disposal instructions for residential users: when this product reaches the end of its life, take it to a collection point designated by local authorities for safe disposal or recycling. The separate collection and recycling of your product will help conserve natural resources, protect human health, and help the environment. For more information please contact your local authority or the retailer where the product was purchased.

FCC Statement

This device complies with Part 15 of the FCC Rules. Operation is subject to the following two conditions: 1) this device may not cause harmful interference, and 2) this device must accept any interference received, including interference that may cause undesired operation of the device. 15.21 – you are cautioned that changes or modifications not expressly approved by the party responsible for compliance could void the user's authority to operate the equipment. 15.105(b) – this equipment has been tested and found to comply with the limits for a Class B digital device, pursuant to part 15 of the FCC rules. These limits are designed to provide reasonable protection against harmful interference in a residential installation. This equipment generates, uses and can radiate radio frequency energy and, if not installed and used in accordance with the instructions, may cause harmful interference to radio communications.

However, there is no guarantee that interference will not occur in a particular installation. If this equipment does cause harmful interference to a radio or television reception, which can be determined by turning the equipment off and on, the user is encouraged to try to correct the interference by one or more of the following measures:

- Reorient or relocate the receiving antenna.
- Increase the separation between the equipment and the receiver.
- Connect the equipment into an outlet or circuit different from that to which the receiver is connected.
- Consult the dealer or an experienced radio/TV technician for help.

Prop 65

This product is compliant with the Safe Drinking Water and Toxic Enforcement Act of 1986.

The Office of Environmental Health Hazard Assessment (OEHHA) administers the Proposition 65 program. OEHHA, which is part of the California Environmental Protection Agency (Cal/EPA), also evaluates all currently

available scientific information on substances considered for placement on the Proposition 65 list.

For further information, please visit oehha.ca.gov

CE Marking

This equipment complies with the essential requirements for the Radio Equipment Directive 2014/53/EU. The Declaration of Conformance for this device is available through contacting Norsud Corp. For more information please visit www.roblnclear.com

Translation


Please contact Robin™ for a full translation of certifications in your chosen language.

Intellectual Property

Robin™ is a trademark of Norsud Corp registered in the US.

Copyright© 2019 Norsud Corp. All rights reserved.

Documents / Resources

<p>hello.</p> <p> robin</p>	<p>robin RDC0801-11 Digital Day Clock 2.0 [pdf] User Manual RDC0801-11, Digital Day Clock 2.0, Day Clock 2.0, RDC0801-11, Clock 2.0</p>
--	---

[Manuals+](#)