



# Robertshaw RS10420T WIFI Programmable Thermostat User Guide

[Home](#) » [Robertshaw](#) » Robertshaw RS10420T WIFI Programmable Thermostat User Guide 

## Contents

- [1 Robertshaw RS10420T WIFI Programmable Thermostat](#)
- [2 Product Information](#)
- [3 Quick Set up Guide Android and Apple Platforms](#)
- [4 Add Device \(RS10420T\)](#)
- [5 Using Your Thermostat \(RS10420T\)](#)
- [6 Documents / Resources](#)
  - [6.1 References](#)
- [7 Related Posts](#)



**Robertshaw RS10420T WIFI Programmable Thermostat**



## Product Information

The Pro-Series thermostat (model RS10420T) is a smart thermostat that can be set up and controlled using Android and Apple platforms. It allows you to configure your thermostat through WiFi networks, with one being your home network and the other programmed into the thermostat. The thermostat does not use Bluetooth for connectivity. The setup process is the same for both Android and iOS devices.

For technical service, you can contact 800.445.8299.

## Setting up the Thermostat (RS10420T)

1. When launching the app for the first time, tap "Create Account" and complete the required fields to sign up.
2. Enter your name and add your image.
3. Tap "+ Add New Device" at the bottom of the screen.
4. Make sure the RS10420T thermostat is turned on and tap "Yes".
5. Tap "Menu" in the lower right corner.
6. Press and hold the "Technician" button on the thermostat for 3-5 seconds.
7. Press and hold the "Fan" button on the thermostat for 3-5 seconds.
8. Select your WiFi network and enter the password.
9. Tap "Yes" to proceed.
10. In your phone settings, select the "therm\_" network and then navigate back to the app to continue configuration.
11. Make sure to allow ROBERTSHAW to access the local network.
12. Wait for your phone to bind to the thermostat.
13. After configuration is completed, tap "Ok".

## Using Your Thermostat (RS10420T)

1. To access settings or delete, tap the three green dots.
2. You can edit the device name in the settings.
3. The active RS10420T thermostat displays the current temperature in green. Tapping it reveals additional

settings.

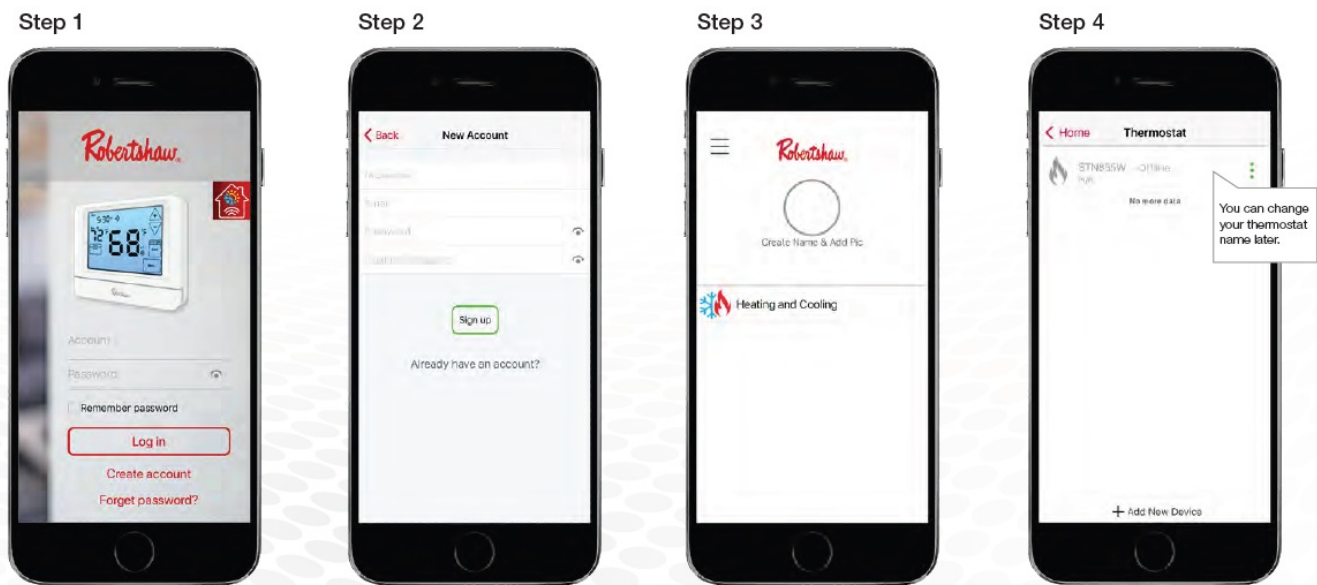
4. To select the control mode, tap the Heat icon.
5. Select Heat or Cool to adjust temperatures.
6. Tap the Fan icon on the bottom menu to select Fan mode.
7. Tap the More icon on the bottom menu for additional settings.
8. To program wake, leave, return, and sleep temperatures, tap "Schedule" and then "Heat".
9. To program cooling daypart temperatures, tap "Cool".
10. To program both heat and cool daypart temperatures, tap "Auto".

For technical service, call 800.445.8299. For customer service, call +1.800.304.6563 or email [HVACCustomerService@robertshaw.com](mailto:HVACCustomerService@robertshaw.com). Visit [www.robertshaw.com](http://www.robertshaw.com) for more information.

## Quick Set up Guide Android and Apple Platforms

The following guide will enable you to set up your thermostat quickly. Configuration is set through WiFi networks, one being your home network, the other programmed into the thermostat. Bluetooth is not used. Apple iOS is shown but is the same for Android set up and use.

### Add Device (RS10420T)



1. When launching the app the first time, tap Create Account.
2. Complete the New Account fields. Tap Sign up.
3. Enter your name and add your image.
4. Tap + Add New Device at the bottom.

Step 5



Step 6



Step 7

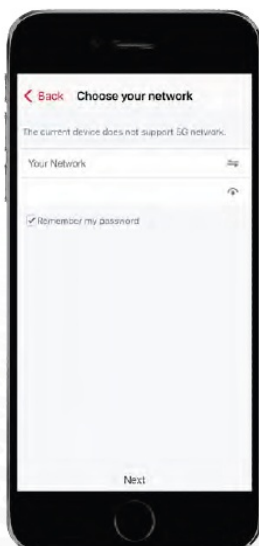


Step 8



5. Make sure the RS10420T is turned on. Tap Yes.
6. Tap Menu in the lower right.
7. Touch the Technician button for 3-5 seconds, as shown.
8. Touch the Fan button for 3-5 seconds, as shown.

Step 9



Step 10



Step 11



Step 12



9. Select your WiFi network, and add password.
10. Tap Yes.
11. Go to phone settings and select the "therm\_" network. Navigate back to app to continue configuration.
12. Make sure to allow ROBERTSHAW to access "Local Network".

Step 13



Step 14

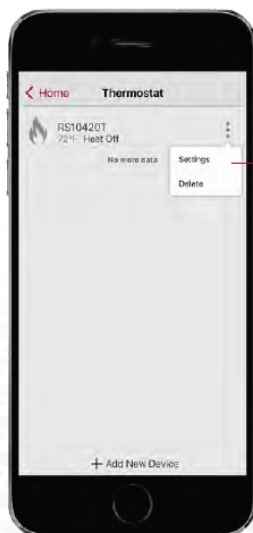


13. Wait for your phone to bind to thermostat.

14. After configuration is completed tap Ok.

## Using Your Thermostat (RS10420T)

Step 1



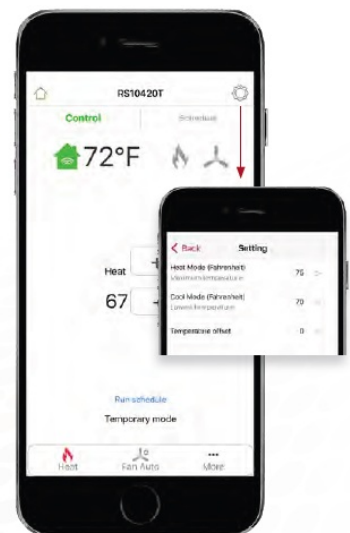
Step 2



Step 3



Step 4

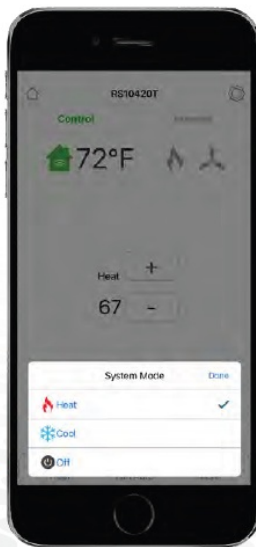


1. Tap the three green dots to access settings or delete.
2. You can edit your device name here.
3. The active RS10420T displays the current temperature in green. Tapping the active thermostat reveals settings seen in Step 4.
4. Tap gear to see settings.

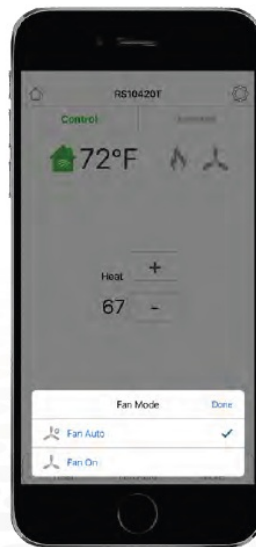
Step 5



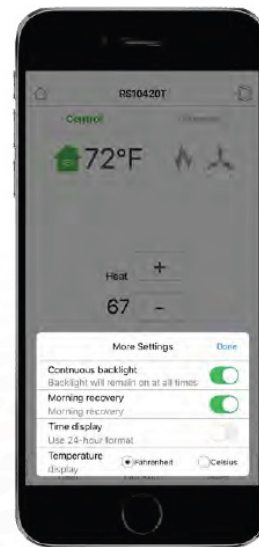
Step 6



Step 7



Step 8

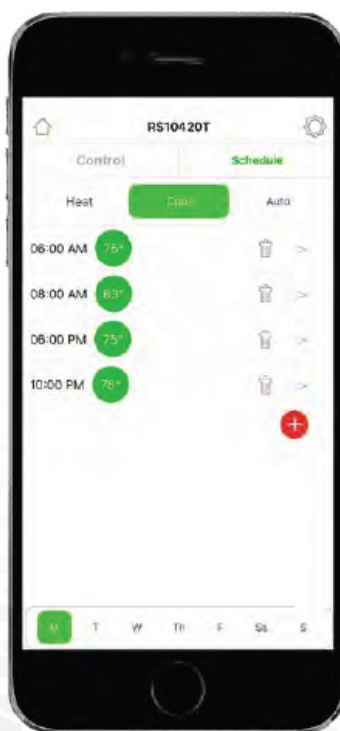


5. To select control mode tap Heat icon.
6. Select Heat or Cool to adjust temperatures.
7. Tap the Fan icon on the bottom menu to select Fan mode.
8. Tap More icon on the bottom menu for More Settings.

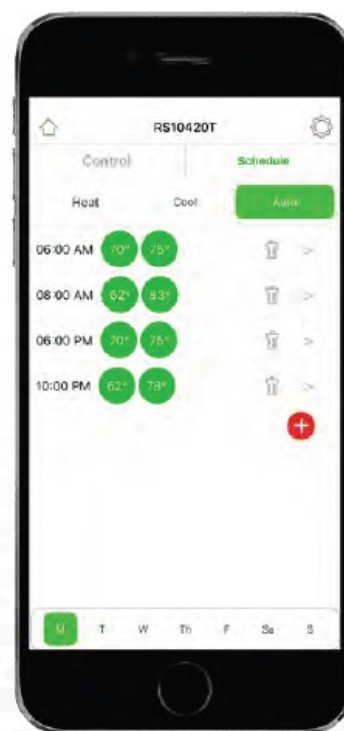
Step 9



Step 10



Step 11



9. Tap Schedule, then Heat. Program wake, leave, return and sleep temperatures by the day.
10. Tap Cool to program cooling daypart temperatures by the day.
11. Tap Auto to program both heat and cool daypart temperatures by the day.

**Customer Service** +1.800.304.6563 HVAC

[CustomerService@robertshaw.com](mailto:CustomerService@robertshaw.com) [www.robertshaw.com](http://www.robertshaw.com)

©2021 Robertshaw • 3/21 -150-2814

Technical Service 800.445.8299

**Documents / Resources**





[Robertshaw RS10420T WIFI Programmable Thermostat](#) [pdf] User Guide  
RS10420T, RS10420T WIFI Programmable Thermostat, WIFI Programmable Thermostat, Programmable Thermostat, RS10420T WIFI, Programmable Thermostat, Thermostat

## References

-  [Robertshaw | Electronic controls, switches and valves](#)

Manuals+.