



## robern P2PUSHKIT Portray Push-To-Open Kit Instruction Manual

[Home](#) » [robern](#) » robern P2PUSHKIT Portray Push-To-Open Kit Instruction Manual 

### robern P2PUSHKIT Portray Push-To-Open Kit



## Contents

[1 TOOLS NEEDED](#)

[2 INSTRUCTIONS](#)

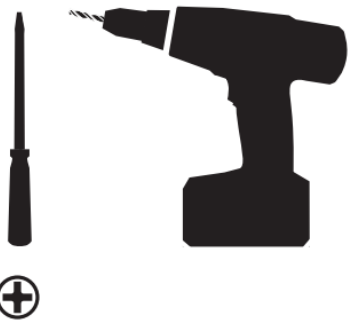
[3 LIMITED WARRANTY ONE YEAR TERM](#)

[4 Documents / Resources](#)

[4.1 References](#)

[5 Related Posts](#)

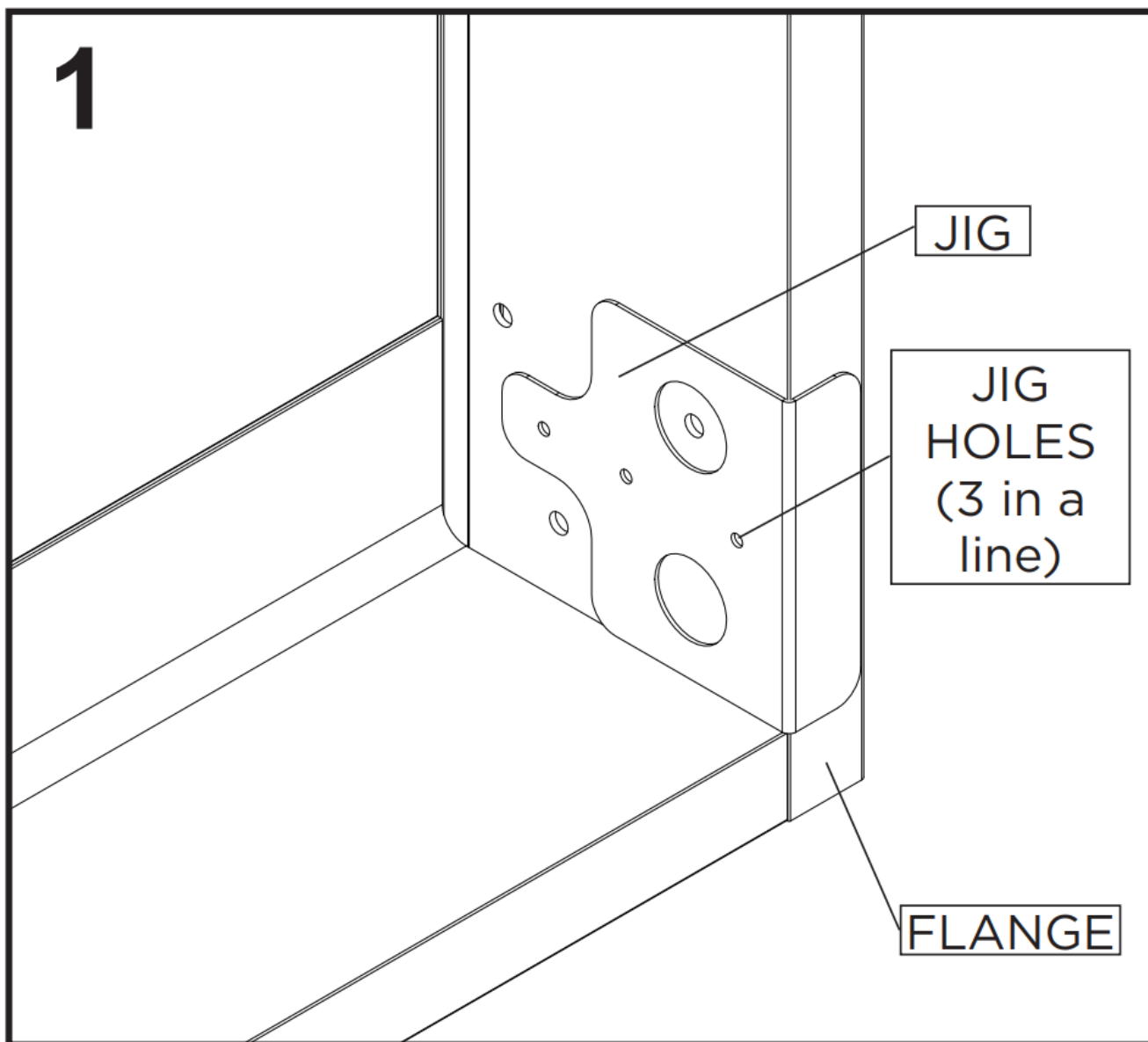
## TOOLS NEEDED



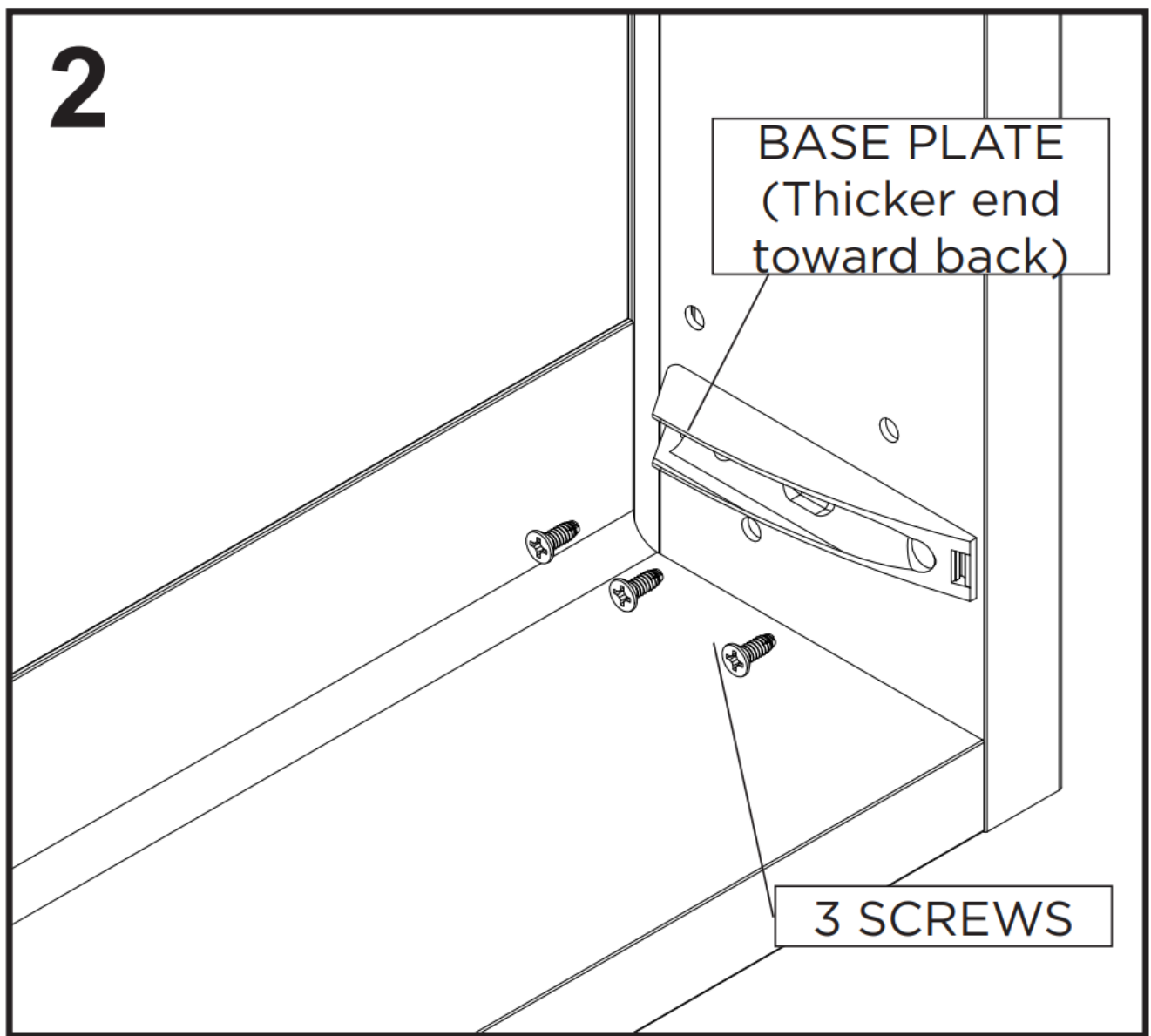
## INSTRUCTIONS

**NOTE:** This kit and instruction manual are applicable to standard sizes of the Portray medicine cabinet only. This cannot be used for the Portray Full Length medicine cabinet (72").

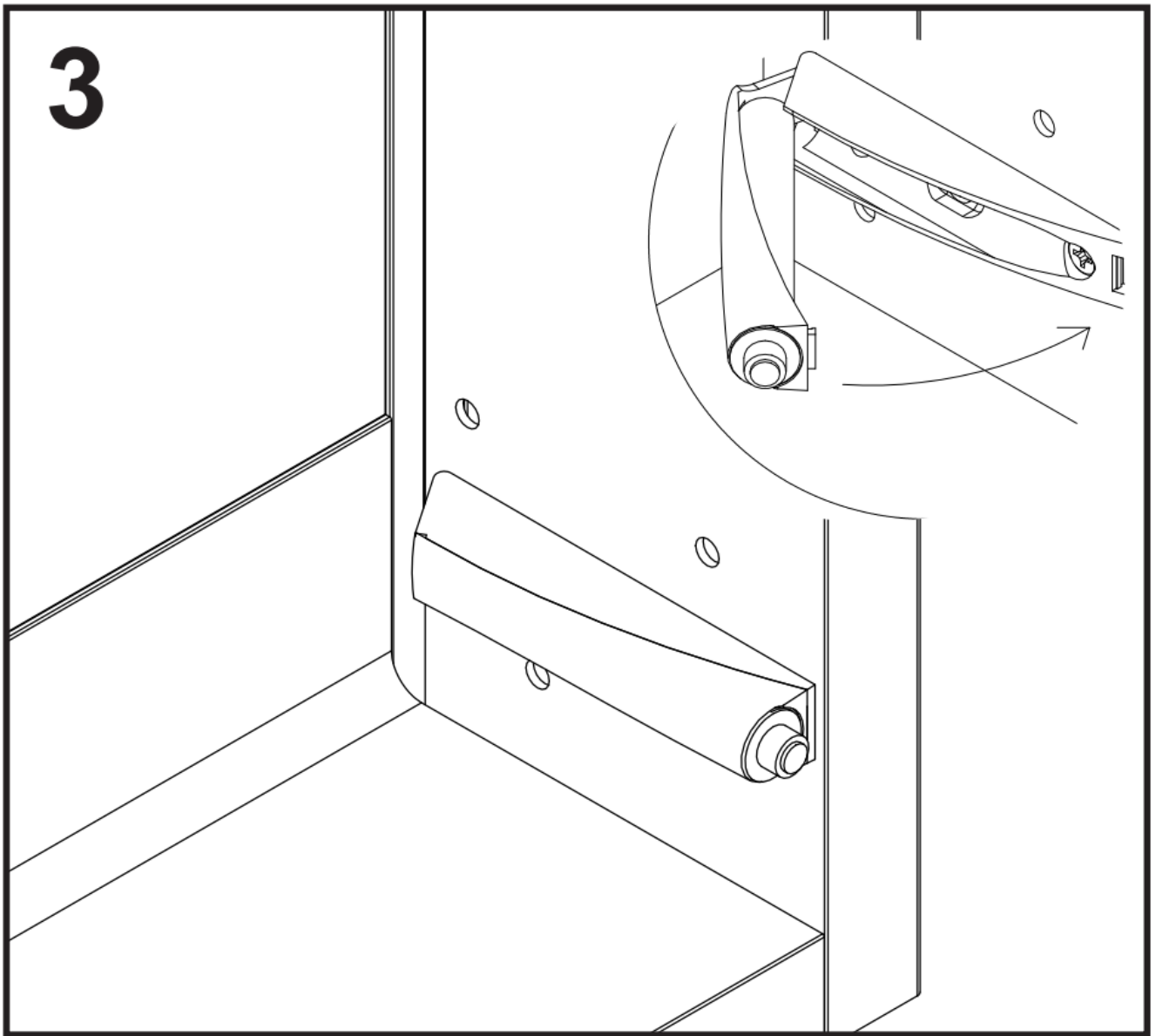
1. Position the supplied jig in the bottom corner of the cabinet, opposite the hinges. Be sure the flange of the Jig is pressed against the flange of the cabinet as shown in **Figure 1**.
  - 1a. Using the supplied #31 (0.120") Drill Bit, drill three holes into the side of the cabinet using the Jig holes shown in **Figure 1**.



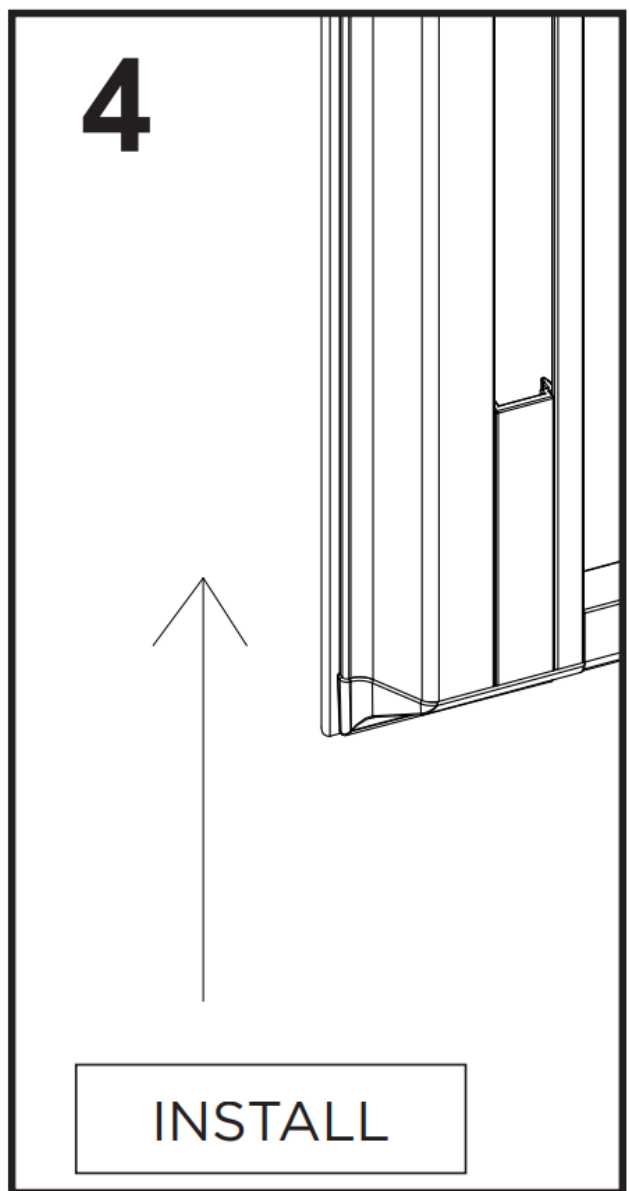
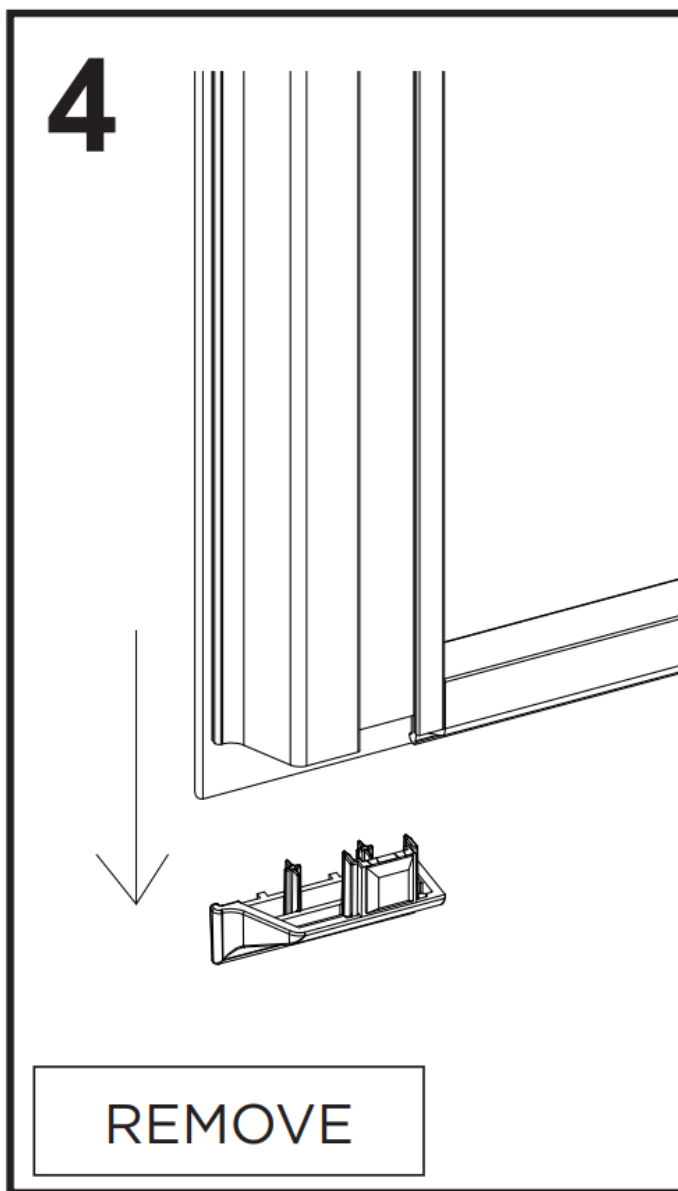
2. Remove the Jig and position the Push-to-Open Base Plate so all three screw holes on the plate line up with the drilled holes as shown in **Figure 2**. Use the supplied screws and a #2 Phillips Bit to install the three screws.



3. Clip the Push-to-Open mechanism onto the baseplate starting with the back, then pressing in the front till an audible click is heard or unit is secured, as shown in **Figure 3**.

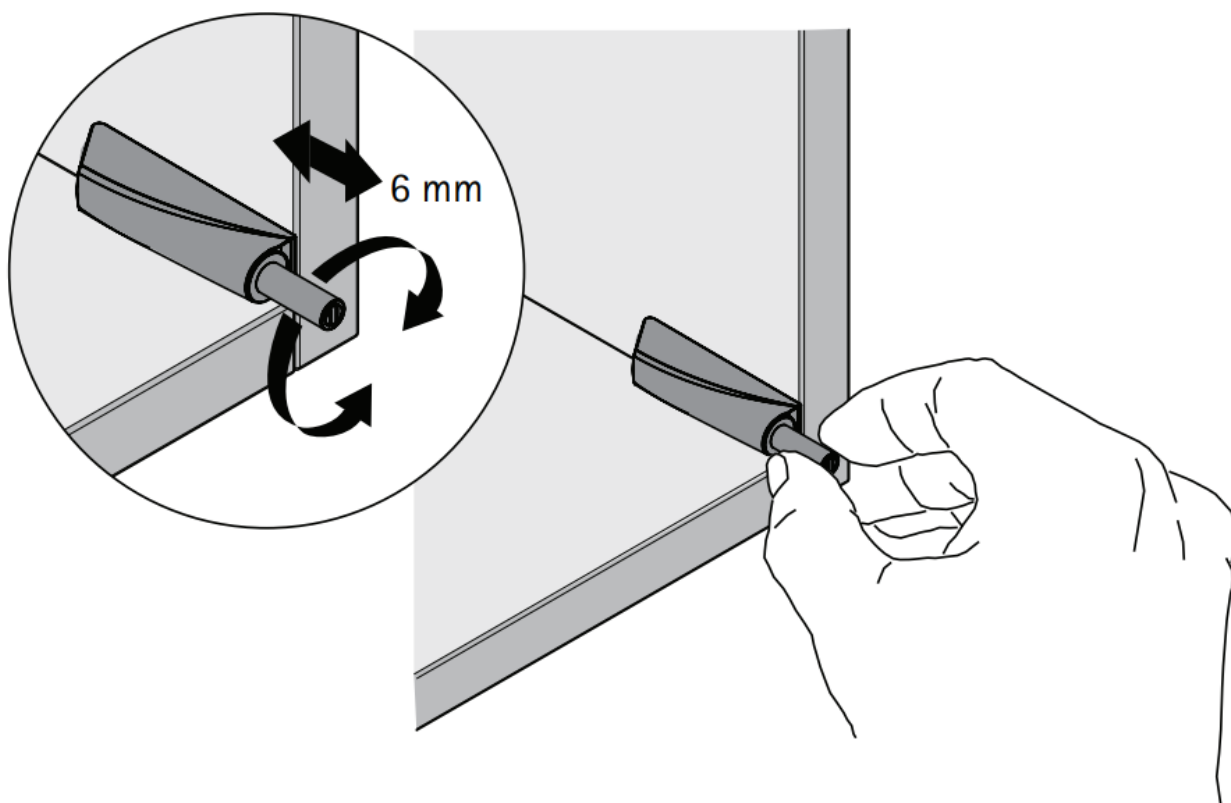


4. Pull adjacent door corner from door channel and install appropriate replacement corner. Push firmly until seated.



5. Adjust the bumper on the Cylinder so the door closes properly by turning the bumper clockwise or counterclockwise.

# 5



## Adjusting Push to open for screwing on

### LIMITED WARRANTY ONE YEAR TERM


Robern warrants to the original purchaser that, it will, at its election repair, replace or make appropriate adjustment to products made by this company shown to have significant defects in material or workmanship which are reported to Robern in writing within one (1) year from the date of delivery. Robern is not responsible for installation costs. The warranty is void in the event the product is damaged in transit, or if damage or failure is caused by abuse, misuse, abnormal usage, faulty installation, damage in an accident, improper maintenance, or any repairs other than those authorized by Robern. At the expiration of the one year warranty period, Robern shall be under no further obligation under any warranty, expressed or implied, including the implied warranty of merchantability. Robern shall not be liable for any consequential damages arising out of or in connection with the use or performance of its products. Some states do not allow limitations on how long an implied warranty lasts or do not allow the exclusion or limitation of incidental or consequential damages, so the above limitation or exclusion may not apply to you. Any liability against Robern under any implied warranty, including the warranty of merchantability, is expressly limited to the terms of this warranty. Permission to return any merchandise under this warranty must be authorized by Robern and returned prepaid by the purchaser. Claims under this warranty should be sent directly to your dealer.



© 2020 Robern, Inc. 701 N. Wilson Ave. Bristol, PA 19007 U.S.A.

800.877.2376 [www.robern.com](http://www.robern.com)

## Documents / Resources

	<p><a href="#">robern P2PUSHKIT Portray Push-To-Open Kit</a> [pdf] Instruction Manual P2PUSHKIT, Portray Push-To-Open Kit, P2PUSHKIT Portray Push-To-Open Kit</p>
---	---

## References

- [f Luxury Bathroom Vanities, Cabinets, Mirrors & Lighting | Robern](#)

Manuals+