



ROADSAFE RPCRU300 Recovery Tow Points User Manual

[Home](#) » [ROADSAFE](#) » ROADSAFE RPCRU300 Recovery Tow Points User Manual 

Contents

- [1 ROADSAFE RPCRU300 Recovery Tow Points](#)
- [2 Product Information](#)
- [3 Product Usage Instructions](#)
- [4 Component List](#)
- [5 PARTS](#)
- [6 ASSEMBLY IMAGE](#)
- [7 FITTING INSTRUCTIONS](#)
- [8 Documents / Resources](#)
- [9 Related Posts](#)



ROADSAFE RPCRU300 Recovery Tow Points



Product Information

- **Vehicle:** Toyota Landcruiser 300 Series 2022+
- **Product:** Recovery Point
- **Product Code:** RPCRU300
- **Note:** During recovery, always use both recovery points.

Product Usage Instructions

1. Position the vehicle to allow easy access to the front of the chassis rails.
2. Remove the bash plates.
3. Remove both factory front tie-down points.
4. Remove the 4 bolts holding the middle cross member and insert 2 longitudinal shims. Secure the middle cross member back into its original position. Refer to Figure 1.
5. Remove all 4 sway bar bolts and allow the sway bar to rest on the middle cross member.
6. Offer the recovery point up to the vehicle, placing it between the sway bar and the chassis. Loosely secure the recovery point using:
 - 1 M12x1.25x55mm bolt, washer, and spring washer through the sway bar bracket into the chassis.
 - 1 M12x1.25x40mm bolt, washer, and spring washer through the hole closest to the center of the vehicle.Refer to Figure 2.
7. Repeat step 6 for the opposite side of the vehicle.
8. Insert the sway bar mount spacer (A) between the rear sway bar mounting hole and the chassis, and loosely secure it with the factory bolt. Refer to Figure 3.
9. Using the lamination plate, crush tube, M12x1.25x130mm bolt, 2 washers, and Nyloc, loosely secure the recovery point through the chassis rail, ensuring the correct selection of shims are used for your application. Refer to Figure 4. Note: Some bullbar applications may already have a crush tube installed into the rail which can be used.
10. Using the M12x1.25x55mm bolt, washer, spring washer, and correct selection of provided shims, loosely secure the recovery point to the chassis. Refer to Figure 5.
11. Repeat steps 9 and 11 for the opposite side of the vehicle.
12. Tighten all bolts to the correct specified torque using the below torque table for reference.

Component List

- 2x Roadsafe Recovery Points
- 2x 2mm Lower shims
- 1x 4mm Lower shim
- 2x 2mm Upright shims
- 2x Crush tubes
- 2x Lamination plates
- 2x Longitudinal shims
- 2x Sway bar mount spacers

Tools Required:

- General hand tools

Hardware Supplied:

- 2x M12*P1.25 RH*130L Hexagon bolts half thread
- 2x M12*P1.25 RH nylon nuts
- 4x M12 washer Ø32*Ø13.2*3.0t
- 6x M12 washer Ø25*Ø13*2.0t
- 6x M12 spring washer Ø20.5*Ø12.5*2.6t
- 2x M12*P1.25 RH*40L Hex head bolts full thread
- 4x M12*P1.25 RH*55L Hexagon bolts half thread

Before Installation:

This recovery point is designed to fit the Toyota Landcruiser 300 Series, as well as a range of bull bar applications. Each bull bar application may be slightly different and may require the modification of brackets and other components.

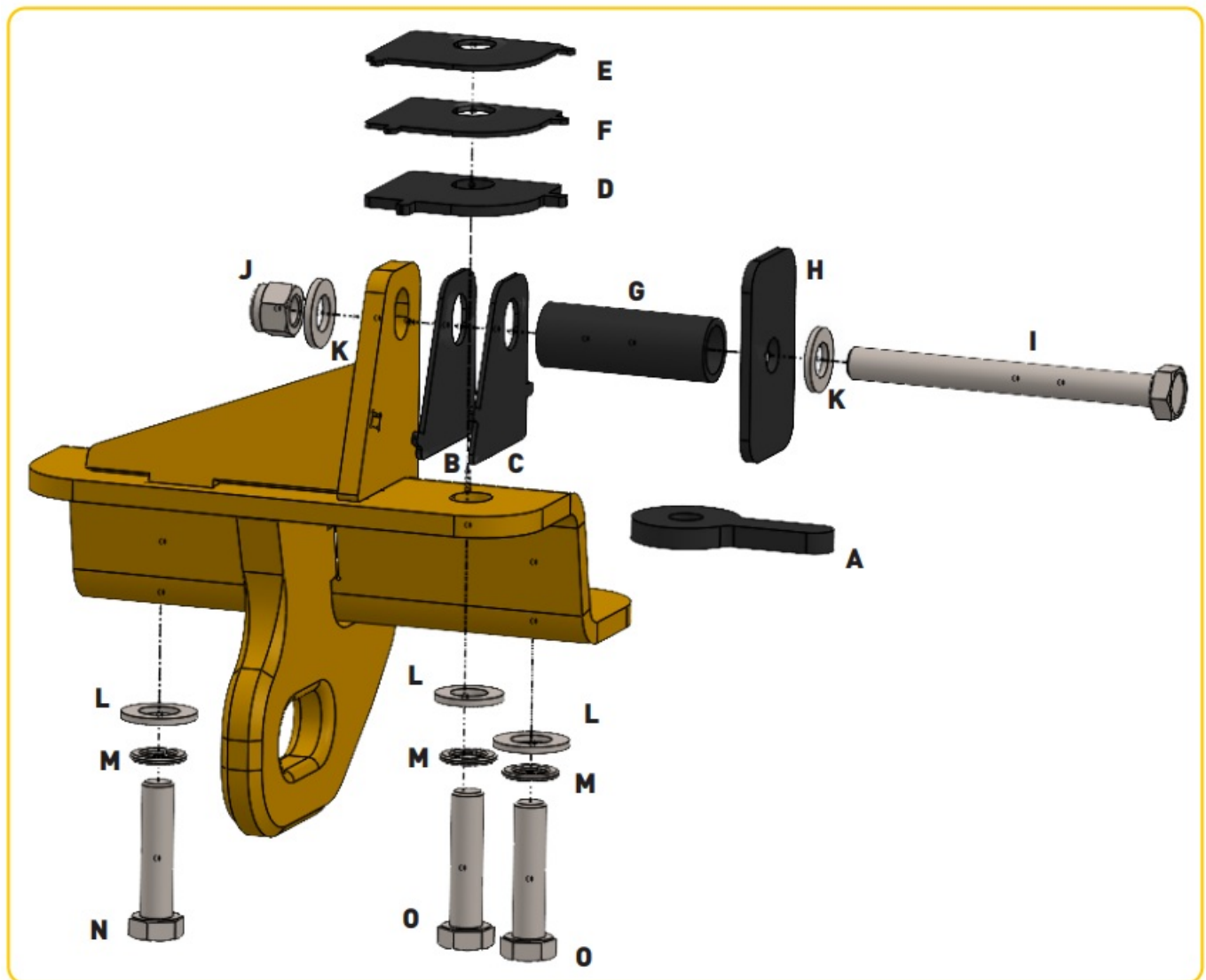
PARTS

ITEM	DESCRIPTION
A	Swaybar Mount Spacer
B	2mm Upright Shim 1/2
C	2mm Upright Shim 2/2
D	4mm Lower Shim 3/3
E	2mm Lower Shim 2/3
F	2mm Lower Shim 1/3
G	Crush Tube
H	Lamination Plate

Hardware

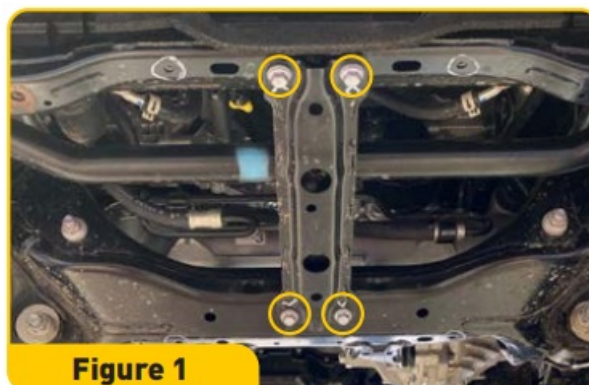
ITEM	DESCRIPTION
I	M12*P1.25 RH*130L Hexagon Bolts Half Thread
J	M12*P1.25 RH Nylon Nuts
K	M12 Washer Ø32*Ø13.2*3.0t
L	M12 Washer Ø25*Ø13*2.0t
M	M12 Spring Washer Ø20.5*Ø12.5*2.6t
N	M12*P1.25 RH*40L Hex Head Bolts Full Thread
O	M12*P1.25 RH*55L Hexagon Bolts Half Thread

ASSEMBLY IMAGE



FITTING INSTRUCTIONS

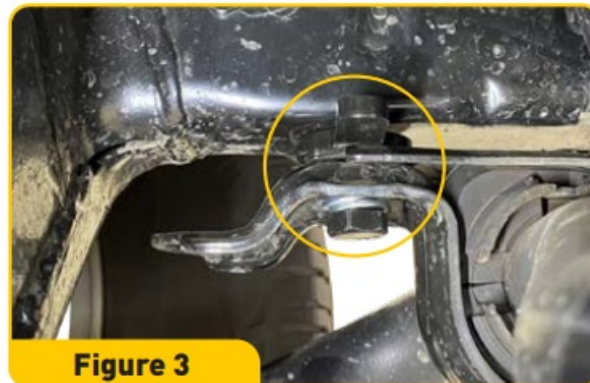
1. Position vehicle to allow easy access to front of chassis rails.



2. Remove bash plates.



3. Remove both factory front tie-down points.
4. Remove 4x bolts holding middle cross member and insert 2x longitudinal shims. Secure middle cross member back into original position.
5. Remove all 4 x sway bar bolts and allow sway bar to rest on middle cross member.



6. Offer recovery point up to vehicle placing it between the sway bar and the chassis. Loosely secure recovery point using:
 - **a.** 1 x M12x1.25x55mm bolt, washer, and spring washer through sway bar bracket into chassis.
 - **b.** 1 x M12x1.25x40mm bolt, washer, and spring washer through the hole closest to the centre of the vehicle.
7. Repeat for the opposite side of the vehicle.
8. Insert the sway bar mount spacer (A) between the rear sway bar mounting hole and the chassis and loosely secure with factory bolt.

The Roadsaf Landcruiser 300 series recovery point is supplied with a selection of shims depending on your application. If your vehicle has no bullbar fitted, the use of all shims provided is essential for correct fitment. If your vehicle is fitted with a bullbar, the correct selection of shims will need to be selected depending on the location and thickness of the bullbar brackets. If a bullbar bracket utilizes the same mounting location, you will need to measure and remove the respective shim to allow proper locating of the recovery point.

The shims included are:

- 2x 2mm shims (E, F) and 1 x 4mm shim (D) for the lower chassis mounting location.
- 2x 2mm shims (B, C) for the upright chassis mount location.

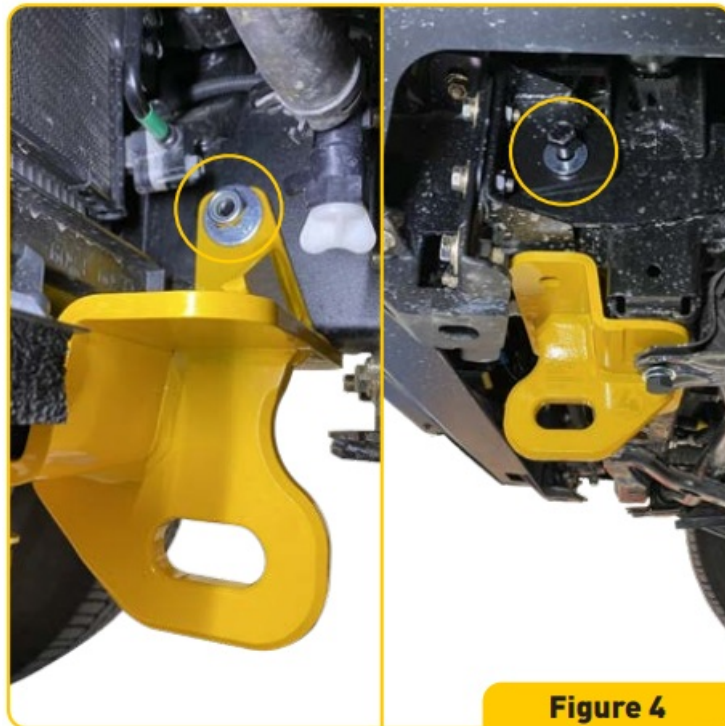


Figure 4

9. Using the lamination plate, crush tube, M12x1.25x130mm bolt, 2 x washer and Nyloc, loosely secure the recovery point through the chassis rail ensuring the correct selection of shims are selected for your application.
Note: Some bullbar applications may already have a crush tube installed into the rail which can be used.
10. Using the M12x1.25x55mm bolt, washer, spring washer and correct selection of provided shims, loosely secure the recovery point to the chassis.
11. Repeat steps 9 & 11 for the opposite side of the vehicle.



Figure 5

12. Tighten all bolts to the correct specified torque using the below torque table for reference.
13. Reinstall and secure vehicle bash plate(s).

Torque Specs

	8.8	10.9	12.9
M10	41-60 Nm	59-85 Nm	65-94 Nm
M12	71-105 Nm	102-150 Nm	114-164 Nm
M14	112-168 Nm	161-240 Nm	182-265 Nm
M16	175-260 Nm	250-371 Nm	282-406 Nm

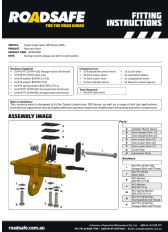
Ensure all supplied and specified components are used during the installation of tow recovery points. Failure to do so will significantly reduce the Working Load Limit (WLL) specified for each individual point, which can result in serious injury or death.

- Opposite Lock bullbar illustrated throughout fitting instructions.
- Confirmed fitment of Roadsafe Recovery Points with factory bumper.

A division of Specialist Wholesalers Pty. Ltd. ABN 64 163 280 279

roadsafe.com.au VIC PH: 03 8687 1700 | QLD PH: 07 37377420 | Email: sales@roadsafe.com.au

Documents / Resources

	<p>ROADSAFE RPCRU300 Recovery Tow Points [pdf] User Manual RPCRU300 Recovery Tow Points, RPCRU300, Recovery Tow Points, Tow Points</p>
---	--