



# RM Acquisition A4C-10012A GPS Device User Manual

[Home](#) » [Rm Acquisition](#) » RM Acquisition A4C-10012A GPS Device User Manual 

## Contents

- [1 RM Acquisition A4C-10012A GPS Device](#)
- [2 Product Information](#)
- [3 Product Usage Instructions](#)
- [4 Install the Mount](#)
- [5 Features](#)
- [6 Rand Navigation](#)
- [7 POI Categories](#)
- [8 Documents / Resources](#)
  - [8.1 References](#)

**RAND McNALLY®**

**RM Acquisition A4C-10012A GPS Device**



## Product Information

The TNDTM 750 is a navigation device manufactured by Rand McNally. It complies with Part 15 of the FCC Rules and Industry Canada's licence-exempt RSSs. The device is designed to provide navigation assistance and must be installed and operated with a minimum distance of 0mm between the radiator and the user's body.

The device comes with a Smart mount, a bracket with suction cup, a vehicle charger, a micro USB cable, and an anti-glare screen protector.

### Key Features:

- Navigation assistance
- Spoken instructions
- Internet connectivity
- Updates and support from Rand McNally

## Product Usage Instructions

### Mount Installation

1. Ensure that the mount does not block the driver's line of sight.
2. Use the mount's DC IN port for charging when using the magnetic mount in your vehicle. Do not attempt to simultaneously charge the tablet from the magnetic mount and the tablet's USB port.

### Getting Started

1. Connect the device to the internet using a stable Wi-Fi connection (mobile hotspot is not recommended).
2. Register the device with Rand McNally for updates and support. Registration is required to receive new updates.

Note: If you encounter any difficulties or uncertainties with the spoken instructions, refer to the navigation map on your device.

Note: Any changes or modifications not approved by the responsible party could void the user's authority to operate the equipment.

## **Your TND™ 750 Unit**

### **Caution:** Important Safety Information Navigation

- Use this device at your own
- Attend to this device only when it is safe to do
- Traffic laws and regulations always have priority over any instructions from the navigation

**NOTE:** If you do not understand the spoken instructions or are unsure of what to do, refer to the navigation map on your device.

### **Installation**

- Make sure that the mount is securely mounted and properly adjusted before each
- Make sure that the mount does not impair the driver's
- Do not attach the mount within the airbag deployment
- Install the mount in a manner that minimizes risk in the event of an accident.
- After installation, check all safety-related equipment to ensure that it operates without interference from the device, its cables, or any other
- Connect the vehicle charger to a 12V outlet

### **Device**

- Do not use sharp-edged objects on the device touch
- The device is not waterproof and is not protected against water damage.
- Protect the device from extreme Operating temperature for the device is between 32 degrees F and 120 degrees F.
- Do not open the device
- Do not attempt to replace the Contact Rand McNally Customer Support with questions about the battery.
- Always follow local regulations when disposing of this

**NOTE:** Make sure that there are no kinks in the cable and that it will not be damaged by any sharp objects.

**NOTE:** Use only a moist cloth to clean the device.

**NOTE:** Do not pull the cable to unplug the unit.

## Box Contents

1. TND™ 750 Unit
2. Smart mount
3. Bracket with suction cup
4. Vehicle charger
5. Micro USB cable
6. Anti-glare screen protector



## Install the Mount

**NOTE:** Follow all local laws and regulations governing the placement of the mount.

1. Select an area with a line of sight to the sky and GPS
2. Clean and dry the mounting place.
3. Remove the suction cup protective
4. Attach the two pieces of the mount together and lock into place.
5. Adjust the angle of the place.
6. Pull the suction cup lever up to release
7. Plug the power cord into the mount and the vehicle's 12-volt power place.
8. Place and hold the mount suction cup against the mounting
9. Press the suction cup lever down until it snaps into place.
10. Snap the tablet onto the place.
11. Adjust the tablet so that it can be easily seen and does not block the driver's line of place.

**WARNING:** When using the magnetic mount in your vehicle, only use the mount's DC IN port for charging. Do not attempt to simultaneously charge the tablet from the magnetic mount and the tablet's USB port.



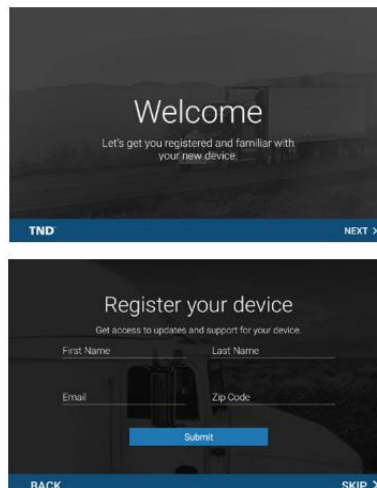
## Getting Started

1. Connect to the Internet.

**NOTE:** It is strongly recommended to use a stable Wi-Fi connection and not a mobile hotspot for setup and updates as the files can be very large.

2. Register your device with Rand McNally for updates and

**NOTE:** You will be required to register your device in order to receive new updates



## Transferring User Information from Previous Device

To move or export user data from a previous Rand McNally TND™ device to a new Rand McNally TND™ device, please visit the following website for specific instructions: [randmcnally.com/tnd750-support](http://randmcnally.com/tnd750-support). Not all devices are supported.

## TND™ 750 Home Screen



- **Settings:** Opens device settings.
- **Apps:** View installed apps.
- **Wi-Fi® indicator:** Opens Wi-Fi® settings and displays connection strength.
- **Bluetooth® indicator:** Opens Bluetooth® settings and shows connectivity status.
- **Volume indicator:** Opens volume control.
- **Brightness indicator:** Opens brightness control.
- **System update:** Indicates if a system update is available. Open to initiate download and installation.
- **Current time**
- **Battery power indicator**

## Features



### 1. Truck Tools

Select to enter truck information, log your fuel and mileage, and access other tools.

### 2. Rand Navigation

Show location on the map and view navigation instructions.

### 3. Guided Search

Choose a destination by History, Address Book, Points of Interest, or by searching.

### 4. DriverConnect

Record, view, and track duty status through your device. Also includes hours of service timers, vehicle inspection reports, and more

## Restart Your TND™ 750

Rand McNally has designed TND™ 750 for speed and reliability. However, from time to time, all Android devices run into problems. If your unit becomes unresponsive for any reason, it's always best to restart the unit by turning it off and on again.

### Restarting the Device

1. Restart the unit by holding down the power button for five seconds, or until you see the Power Off screen.
2. Press Power Off.
3. Once the unit shuts down, press and hold the power button for two to four seconds to turn it back on.

If the unit is unresponsive and you don't see the power off button appear on the screen, hold down the power button for 10 to 15 seconds and the device will turn off completely. Once the unit shuts down, press and hold the power button for two to four seconds to turn it back on.

For additional help and FAQs, visit [randmcnally.com/sup](http://randmcnally.com/sup)

## Rand Navigation



1. Route to a location
2. Battery power status and charging indicator
3. Select map view mode: Heading up, North up or 3D view
4. Wi-Fi connected services
5. Zoom in/out
6. Return to current location
7. Virtual dashboard
8. Current street name, upcoming intersection, or current location




9. Local time or Elevation
10. Settings: General, Truck Info, Route, Map and Warnings
11. Hide/display screen information and controls

## Rand Navigation > Preferences

On the left,  
tap on an  
option

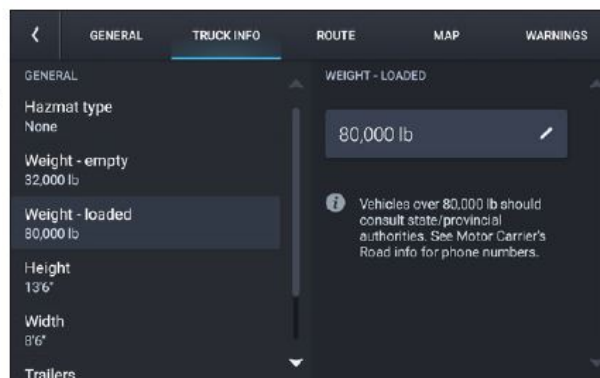


On the  
right,  
enter  
settings  
for the  
option




1. Tap Settings.
2. Tap the General, Route or Map tab.
3. Tap  and  to view options.
4. Tap the option button to be changed.
5. Enter new settings.
6. Tap  to save changes.

## Rand Navigation > Truck Info and Warnings

On the left,  
tap on an  
option



On the  
right,  
enter  
settings  
for the  
option

1. Tap Settings.
2. Tap Truck Info or Warnings tab.
3. Tap  and  to view options.
4. Tap the option button to be changed.
5. Enter new settings.
6. Tap  to save changes

## Rand Navigation > Destination





1. Route to a searched location.

**Tips:**

- Search for addresses, streets, cities and points of interest.
- Address searches should include either a city or postal code.
- Avoid using punctuations.
- Avoid using street prefixes and suffixes.

2. Go to map.

3. Route to a New location.

4. Plan a multi-stop trip or record a trail.

5. Return to a previous location.

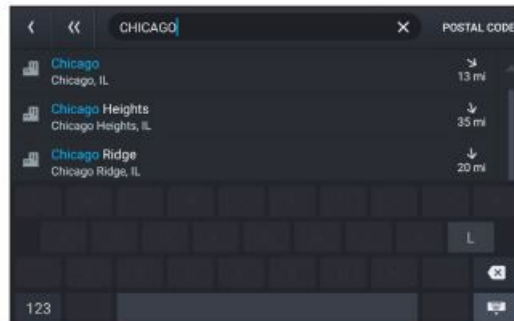
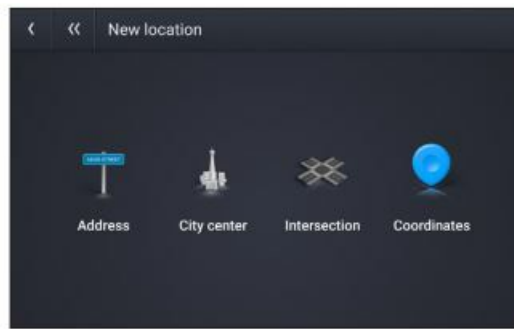
6. Access the Address book.

7. Route to a Point of Interest (POI).

8. Add Home location.

9. Add Work location

**Rand Navigation > New Location**



1. Tap Where to? > Guided Search > New location.
2. Tap Address.
3. Enter the name of the (Note: As you type, the keyboard only displays the next possible letters.)
4. Results appear in the list. Tap the city to
5. Enter the street name. Tap the street name to
6. Enter the house Tap the address to select.

### Tips

- You can also route to a new location by City center, Intersection, Coordinates, or choose Address > Postal Code.
- View recent destinations by tapping

### Where to? > Guided Search > History.

- View recent cities by tapping

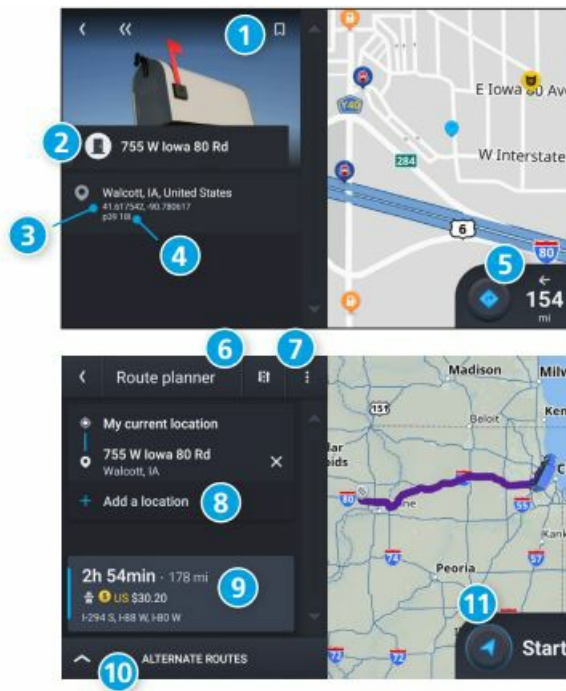
### Where to? > Guided Search > New location > Address.

- View saved locations by tapping

### Where to? > Guided Search > Address book > Bookmarks.

- View saved trips by tapping Where to? > Guided Search > My trips.

### Rand Navigation > Confirm Destination Windows



1. Create bookmark.
2. Destination address.
3. Coordinates.
4. Cross reference to page number in printed Rand McNally Motor Carriers' Road Atlas.
5. Begin route to destination.
6. Reorder stops.
7. Modify Route avoids, review Route details, Overview and Save to My trips.
8. Add a destination to your trip.
9. Review route details.
10. Review alternate route(s) and choose one.
11. Start route.
  - To manage via points, Tap Where to? > Guided Search
  - My trips > Multi-stop trips. You can add up to 25 destinations to a multi-stop trip.

## Rand Navigation > Route Map Window



- **Next Maneuver:** Instructions for your next maneuver.
- **Road Name:** Next maneuver street name or highway sign.
- **Exits:** Check upcoming exits for food, gas, hotels and other places.

- **Route Options:** Tap to display additional options, including adding a stop, detours, and ending navigation.
- **Current time and time zone**
- **Map View Mode:** Tap to switch the map view: 3D map, North up, or Heading up.
- **Battery power status and charging indicator**
- **Wi-Fi Connected Services:** Tap to enable fuel prices, weather and traffic on the map.
- **Note:** These options require a Wi-Fi connection.
- **Zoom In/Zoom Out Announcements**
- **Distance remaining to your destination:** Displays a progress bar indicating the distance remaining to your destination.
- **Expanded Map Display:** Tap to remove additional options from the map screen.
- **Settings:** Tap to open the Navigation Settings screens

## Rand Navigation > Junction View

- **ETA/Time/Distance:** Tap to toggle between displaying ETA, Yard ETA, Remaining Time, Yard Time, and Elevation.
- **Location View:** Tap to toggle between displaying the current location by city, street name, or next cross street.
- **Virtual Dashboard:** Tap to view information about your current location, route, trips, and more.
- **Current Speed:** Displays your current speed and turns red for speed warnings.
- **Speed Limit:** Posted speed limit for your vehicle setting. Tap to open a screen to submit a speed limit correction.
- **Map:** Displays the map, your current route, and your vehicle's current location.

When on a route, Junction View displays when you have an upcoming maneuver. Once past the maneuver, Junction View closes and the previous window displays.

- Signs to follow for the next maneuver.
- Distance to the upcoming maneuver.
- Distance decreases as you approach.
- Lane assist arrows.
- Dismiss Junction View



## Rand Navigation > Points of Interest (POIs)

With an active route, tap

**Route Options > Search / Add a Stop > Guided Search > POIs .**

## Search for a POI:

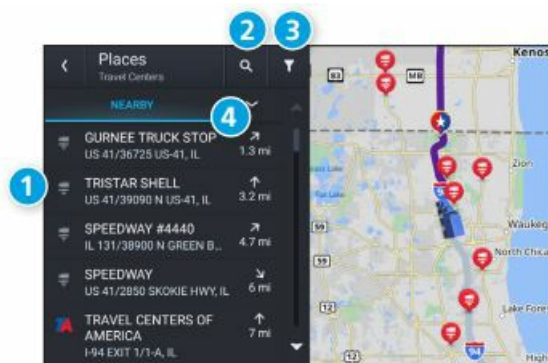
- Near your truck.
- In a particular city.
- Along your route.
- Near your destination.

## POI Categories

- Select a category.
- Search your custom POIs.
- Find popular truck-friendly POIs.



## Rand Navigation > POIs – continued



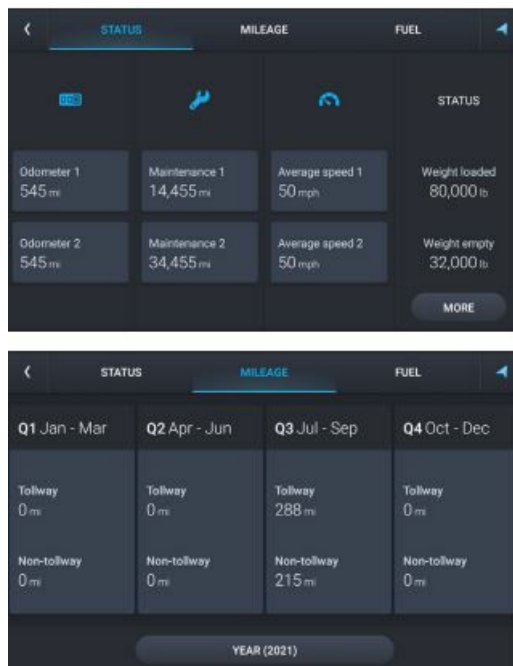
1. Tap location to select.
2. Search by name.
3. Search by available services.
4. Search near current location, near destination, or along route

## Rand Navigation > Virtual Dashboard



1. Current location.
2. Current times at the yard, current location
3. and destination, as well as estimated time of arrival.
4. Sunrise and sunset times based on vehicle location (latitude/longitude) and time of day.
5. Current speed (above) and posted speed limit (below).
6. **Note:** Turns red when speed limit warning exceeded. Elevation at current location.
7. Current leg progress.
8. Information for up to three trips. Includes odometer, time and speed information.
9. Nearest cross street.
10. Current day and date at your location.
11. Battery power status and charging indicator Return to the route map.
12. Add fuel purchase information.
13. Distance to next maneuver.

## Rand Navigation > Status and Mileage



1. Tap Truck Tools > Status, Mileage & Fuel.
2. Tap the Status tab to view timers, odometer readings and average
3. Tap on a field to change or reset the mileage
4. Tap the Mileage tab to view a list of mileage logs by

5. Tap on a quarter to view its logs

## Rand Navigation > Fuel




Add fuel log			SAVE
Date 08/17/2021			Taxable <input checked="" type="checkbox"/>
Fuel quantity 146.740 gal	Fuel price \$2.970 /gal	Total cost \$435.82	Location Lake Forest
Station I-294	Last odometer 28,555 mi	Current odometer 29,508 mi	
Distance 953 mi	Current economy 6.5 mpg	Average economy 6.5 mpg	

1. Tap Truck Tools > Status, Mileage & Fuel.
2. Tap the Fuel tab to view a list of fuel logs by quarter.
3. Tap on a quarter to view its
4. Tap Add Fuel to record the date, location and cost of a fuel
5. Tap on a field to make
6. Tap Save.

## Rand Navigation > Fuel Prices, Weather and Traffic



**Note:** These features require a Wi-Fi connection.

- To access fuel prices, weather and traffic, tap the Wi-Fi connected services button .
- Enable the appropriate slider  to view fuel prices, weather and traffic on the map.
- Tap the Wi-Fi connection settings button  to view details and settings for fuel, weather and traffic.
- Tap the Fuel tab to view, sort and filter a list of prices, as well as modify preferences.
- Tap the Weather tab to view weather conditions and modify weather layer preferences.
- Tap the Traffic tab to view a traffic flow and incident list.

## More Information

For more information



- **Rand McNally website**  
[randmcnally.com/tnd750](http://randmcnally.com/tnd750)
- **Support**  
[randmcnally.com/support](http://randmcnally.com/support)
- **Accessories**  
[store.randmcnally.com](http://store.randmcnally.com)
- **Facebook**  
[facebook.com/randmcnally](http://facebook.com/randmcnally)

**Customer Support Call toll-free: 1-877-446-4863**

**E-mail: [support@randmcnally.com](mailto:support@randmcnally.com)**

Questions about using your TND™ 750? Our team is ready to help.

### **Warnings, End-User License Agreement, and Warranty**

Pay attention to road conditions and street signs, and obey all traffic and safety laws. Traffic laws and current traffic conditions must always be observed and take precedence over the instructions issued by the Rand McNally® navigation system. The User should be aware of situations where current traffic conditions and the instructions from the navigation system may be in conflict. Some states prohibit the use of windshield mounts and may otherwise restrict the usage of navigation and other electronic devices in the vehicle. It is the User's responsibility to operate his/her vehicle in a safe manner and to ensure compliance with all laws and regulations. The use of the navigation system does not relieve the User of his/her responsibilities. If after reading the following terms and conditions, the User decides not to accept the terms, the User should not use this navigation system. Rand McNally hereby grants you ("User") a single-user non-exclusive, non-transferable license to use the Rand McNally navigation system, including software incorporated and associated data incorporated therein and all related documentation that accompanies the product (hereinafter referred to as the "Product") for User's own internal business or personal use and not for resale or sublicense. This Product is furnished under license and may be used only in accordance with the terms and conditions of this license. Except as permitted by such license, the contents of this Product may not be disclosed to third parties, copied or duplicated in any form, in whole or in part, without the prior written permission of Rand McNally. This Product contains proprietary and confidential information of Rand McNally and its licensors. Rand McNally grants User a limited license for use of this Product for its normal operation. By using the Product, User acknowledges that the contents of the Product are the property of Rand McNally and its licensors and are protected by U.S. copyright, trademark and patent laws and international treaties.

#### **THE USER MAY NOT:**

- Use the Product on a network or server, for time-sharing or to process data for other proprietary
- Use the Product to create any routing tables, databases or other copyright
- Copy, loan or otherwise transfer or sublicense the Product, its software or proprietary
- Modify or adapt the Product in any way, or decompile, disassemble, reverse engineer or reduce to human readable form the software incorporated in the
- Alter, remove or obscure any copyright notice, trademark notice, or proprietary legend from the

This license will terminate automatically if User fails to comply with any of the terms of this license, and in such case, User agrees to immediately stop using the Product. Rand McNally may revise or update the Product at its sole discretion, but it is not obligated to furnish any revisions or updates to User. Rand McNally warrants that the Product, and the component parts thereof, will be free of defects in workmanship and materials for a period of one



(1) year from the date of purchase. This warranty may be enforced only by the first consumer purchaser ("Customer"), provided that the Product is utilized within the U.S.A. or Canada. During the warranty term, Rand McNally will, without charge, repair or replace (with a new or newly reconditioned unit), at its option, defective Products or component parts. For repair or replacement of defective Products, Customer must contact Rand McNally at 877-446-4863 for return authorization and instructions. Customer will be required to provide proof of date of first Customer purchase by providing a copy of the original sales receipt, if the device is not registered in our system or the device shows registered to another customer, in order for the warranty to be valid. The Customer will not be responsible for shipping charges to or from Rand McNally as long as the warranty is valid, if the Product is found to be defective and is repaired or replaced under the terms of this warranty.

If the Product sent in is still under its original warranty, then following repair or replacement by Rand McNally, the new warranty is 90 days or to the end of the original one (1) year warranty, whichever is longer. If the Product is out of warranty, Rand McNally shall have no obligation to repair or replace the Product, but if it does choose to repair or replace the Product, such repair or replacement shall be at Rand McNally's then-current cost. In such case, Customer shall be responsible for all shipping charges associated with the shipment of the Product to Rand McNally and its return to the Customer. This warranty gives the Customer specific rights. Other rights may be available to Customer which vary from state to state.

**Exclusions:**

This limited warranty does not apply: 1) to any Product damaged by accident; 2) in the event of misuse or abuse of the Product or as a result of unauthorized alterations or repairs; 3) if the serial number has been altered, defaced or removed; 4) if the Product is used other than as provided in the documentation that accompanies the Product, or 5) if the Product is used or Customer resides outside of the U.S.A. or Canada

**CAUTION:** RAND MCNALLY MAKES NO WARRANTY AS TO THE ACCURACY OR COMPLETENESS OF THE INFORMATION CONTAINED IN OR PROVIDED BY THE PRODUCT, THE SOFTWARE OR THE DOCUMENTATION, AND DISCLAIMS ANY AND ALL EXPRESS, IMPLIED OR STATUTORY WARRANTIES, INCLUDING ANY IMPLIED WARRANTIES OF MERCHANTABILITY OR FITNESS FOR A PARTICULAR PURPOSE, AND ANY WARRANTY AS TO QUALITY, PERFORMANCE, TITLE OR NON-INFRINGEMENT. SOME STATES DO NOT ALLOW LIMITATIONS ON HOW LONG AN IMPLIED WARRANTY LASTS AND/OR DO NOT ALLOW THE EXCLUSION OR LIMITATION OF INCIDENTAL OR CONSEQUENTIAL DAMAGES, SO THE ABOVE LIMITATIONS MAY NOT APPLY TO SOME CONSUMERS.

IN NO EVENT WILL RAND MCNALLY OR ITS LICENSORS BE LIABLE FOR ANY INDIRECT, SPECIAL, INCIDENTAL, OR CONSEQUENTIAL DAMAGES ARISING OUT OF THE USE OR INABILITY TO USE THE PRODUCT, EVEN IF ADVISED OF THE POSSIBILITY OF SUCH DAMAGES.

IT IS THE USER'S RESPONSIBILITY TO USE THIS PRODUCT PRUDENTLY AND IN ACCORDANCE WITH THE DOCUMENTATION. THIS PRODUCT IS INTENDED TO BE USED ONLY AS A TRAVEL AID AND MUST NOT BE USED FOR ANY PURPOSE REQUIRING PRECISE MEASUREMENT OF DIRECTION, DISTANCE, LOCATION OR TOPOGRAPHY.

The User agrees to allow information provided by the User to Rand McNally to be used for internal business evaluation purposes, including, but not limited to, evaluating the effectiveness of the Product and the services provided and methods to simplify or improve User experiences. Such information will not be provided to third parties in any way that discloses the identity of the User. Rand McNally may make use of third party software in the Product. Notwithstanding the terms and conditions of this license, use of some third party materials included in the Product may be subject to such third party's license and terms and conditions. The third party copyright notices are provided at the end of this License. The User agrees to indemnify, defend and hold Rand McNally and its licensors (including their respective licensors, suppliers, assignees, subsidiaries, affiliated companies, and the respective officers, directors, employees, shareholders, agents and representatives of each of them) free and harmless from and against any liability, loss, injury (including injuries resulting in death), demand, action, cost, expense or claim of any kind or character, including but not limited to attorney's fees, arising out of or in connection with any use or possession by the User of this Product.

These terms and conditions constitute the entire agreement between Rand McNally (and its licensors and

suppliers) and the User pertaining to the subject matter hereof, and supersedes in their entirety any and all written or oral agreements previously existing between us with respect to such subject matter. The terms and conditions (including the license) may be updated from time to time with or without notice. The above terms and conditions shall be governed by the laws of Illinois, without giving effect to (i) its conflict of laws provisions, or (ii) the United Nations Convention for Contracts for the International Sale of Goods, which is explicitly excluded. Any action or proceeding to enforce or interpret the terms of this license and warranty shall only be brought in state or federal court located in Cook County, Illinois. The User agrees to submit to the jurisdiction of Illinois courts for any and all disputes, claims and actions arising from or in connection with the User's license and use of the Product hereunder.

User shall not export the Product in violation of any U.S. or foreign laws. Rand McNally's licensors shall be third party beneficiaries of Rand McNally's rights under this license, but are not parties hereto and have no obligations hereunder. By using this Product you agree to be bound both by the foregoing and to any additional terms of use found at [www.randmcnally.com](http://www.randmcnally.com).

Actual toll costs may vary from estimates depending upon a number of factors including inaccurate or imprecise source data and variable toll costs, which are dependent upon vehicle characteristics (class, axle number, weight, etc.) that vary across toll roads. Restricted Rights Legend. For governmental agencies: Use, reproduction or disclosure is subject to restrictions set forth in subparagraph (c) (1) (iii) of the Right in Technical Data and Computer Software clause at DFARS 52.227-7013, as amended. Rand McNally, TripMaker, the Rand McNally logo and the globe design mark are registered trademarks and TND is a trademark of RM Acquisition, LLC d/b/a Rand McNally. Portions © 2022 HERE. All rights reserved. This data includes information taken with permission from Canadian authorities, including © Her Majesty the Queen in Right of Canada, © Queen's Printer for Ontario. All rights reserved. © 2022 Rand McNally. All rights reserved. U.S. Patent Nos. 7,580,791 and 8,214,141.

**WARNING:** California Prop 65: Cancer and Reproductive Harm – [www.P65Warnings.ca.gov](http://www.P65Warnings.ca.gov)

## Trademarks

TND™ is a trademark of RM Acquisition, LLC d/b/a Rand McNally. Weather data provided by VAISALA. Fuel prices provided by OPIS. Traffic information provided by INRIX, Inc. © 2022 Rand McNally. © 2022 HERE. All rights reserved. Rand McNally follows a continuous improvement process and reserves the right to provide enhancements that may not be reflected in the pictures and specifications in this manual. The information contained herein may be changed at any time without prior notification. Neither this manual nor any parts thereof may be reproduced for any purpose whatsoever without the express written consent of Rand McNally, nor may it be transmitted in any form either electronically or mechanically, including photocopying and recording. All technical specifications, drawings, etc. are subject to copyright law.

This device complies with Part 15 of the FCC Rules. Operation is subject to the following two conditions:

- this device may not cause harmful interference, and
- this device must accept any interference received, including interference that may cause undesired

## FCC Statement

This equipment has been tested and found to comply with the limits for a Class B digital device, pursuant to part 15 of the FCC Rules. These limits are designed to provide reasonable protection against harmful interference in a residential installation. This equipment generates uses and can radiate radio frequency energy and, if not installed and used in accordance with the instructions, may cause harmful interference to radio communications. However, there is no guarantee that interference will not occur in a particular installation. If this equipment does cause harmful interference to radio or television reception, which can be determined by turning the equipment off and on, the user is encouraged to try to correct the interference by one or more of the following measures:

- Reorient or relocate the receiving antenna.
- Increase the separation between the equipment and receiver.

- Connect the equipment into an outlet on a circuit different from that to which the receiver is connected.
- Consult the dealer or an experienced radio/TV technician for help.

**FCC Radiation Exposure Statement**

This device complies with FCC SAR exposure limits set forth for an uncontrolled environment. SAR compliance for using the equipment in close proximity to the human body has been evaluated at 0mm. This equipment must not be co-located or operating in conjunction with any other antenna or transmitter. End-users and installers must be provide with antenna installation instructions and consider removing the no-collocation statement.

**Caution!** Any changes or modifications not expressly approved by the party responsible for compliance could void the user’s authority to operate the equipment.

**Documents / Resources**

	<a href="#">RM Acquisition A4C-10012A GPS Device</a> [pdf] User Manual A4C-10012A GPS Device, A4C-10012A, GPS Device, Device
---	---

**References**

-  [Rand McNally | Support Center](#)
-  [Rand Tablet | Rand McNally](#)
-  [Rand McNally Official Store](#)
-  [P65Warnings.ca.gov](#)
-  [Fleet Solutions | Rand McNally](#)