



## RKI Instruments Four Gas Monitor Installation Guide

[Home](#) » [RKI INSTRUMENTS](#) » RKI Instruments Four Gas Monitor Installation Guide 



### Four Gas Monitor Installation Guide

#### Contents

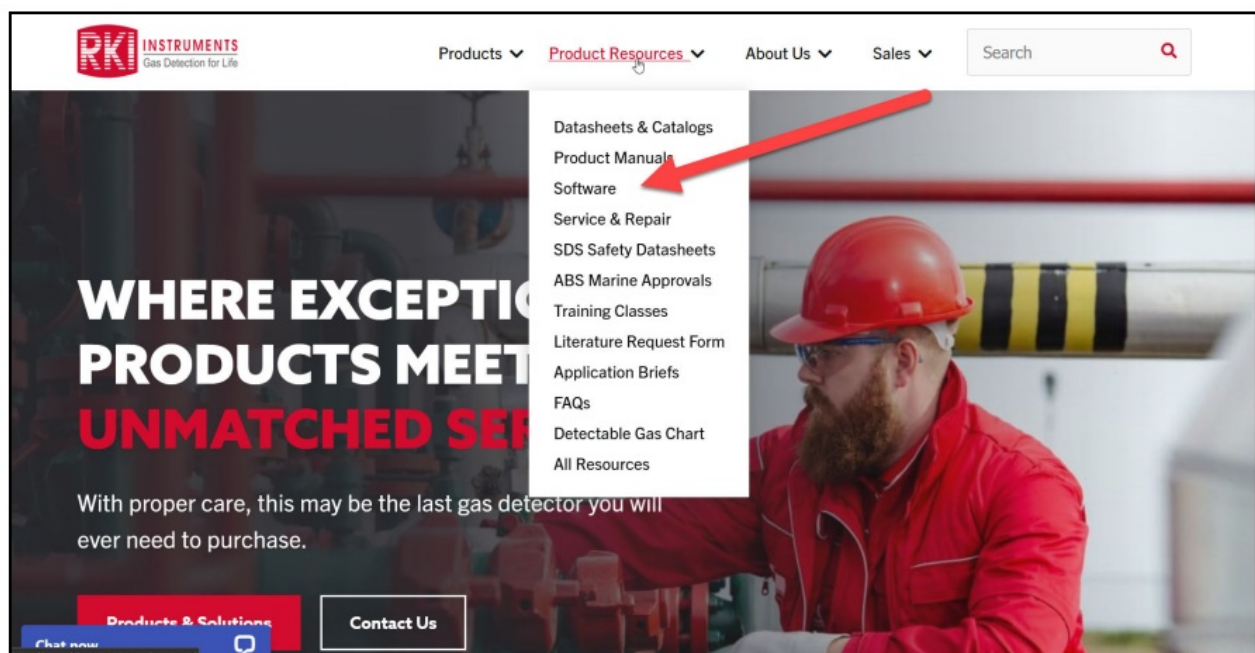
- [1 Four Gas Monitor](#)
- [2 Documents / Resources](#)
- [2.1 References](#)

### Four Gas Monitor

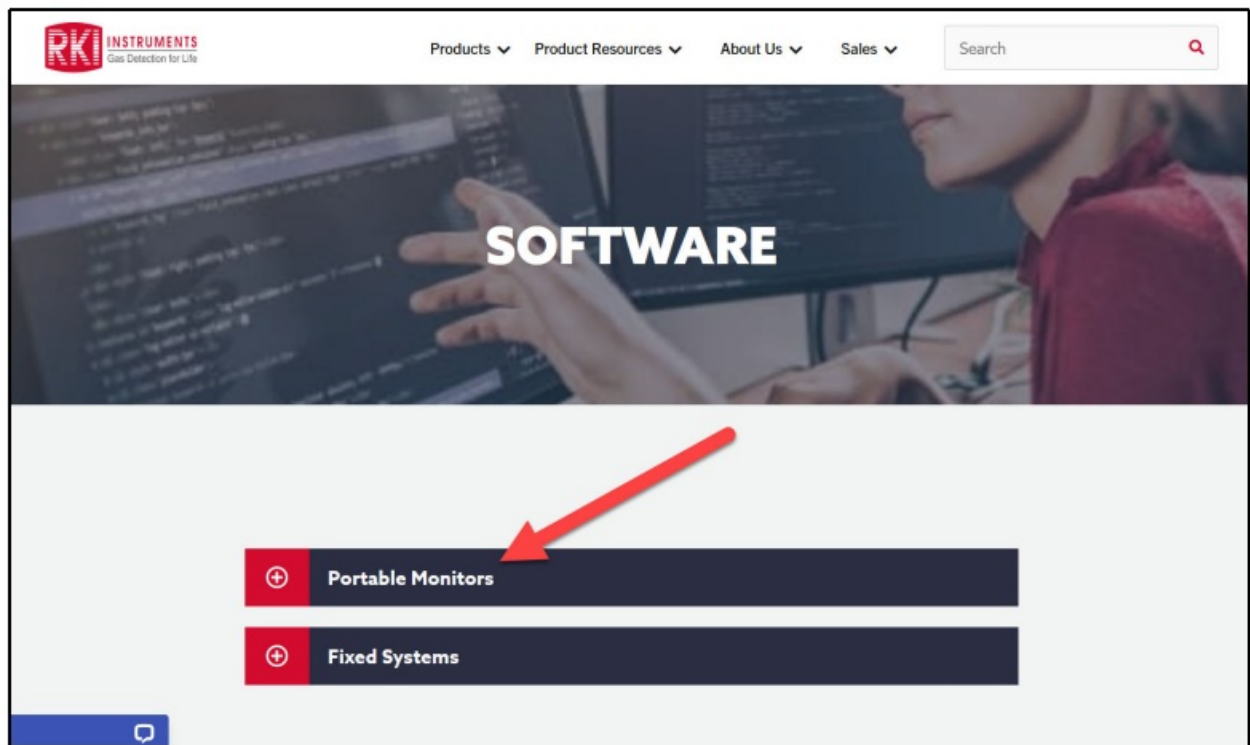


**IrDA Cable Driver Installation Guide**  
**Document Part Number: 71-0658 Revision: P1 Released: 2/1/24**

1. Navigate to the RKI Instruments, Inc. website: <https://www.rkiinstruments.com/>
2. Move the cursor over Product Resources in the website header.
3. Click on Software from the dropdown menu.



4. Click on Portable Monitors to open the list of downloads.



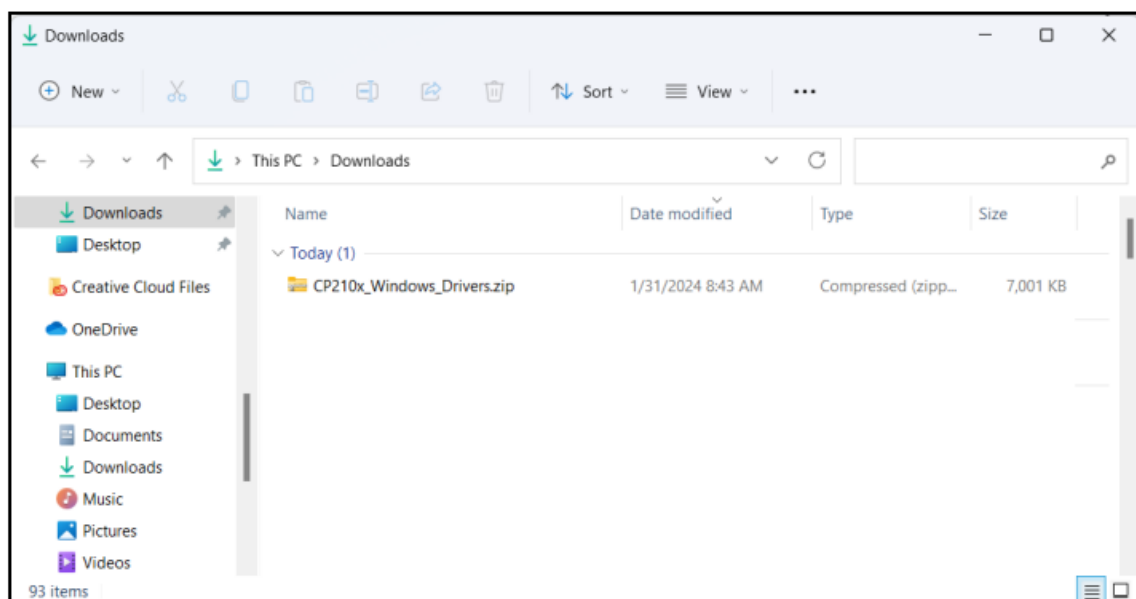
5. Click on **IrDA Drivers** to download the program .zip folder.

The screenshot shows the 'Portable Monitors' section of the website. It contains a table with the following data:

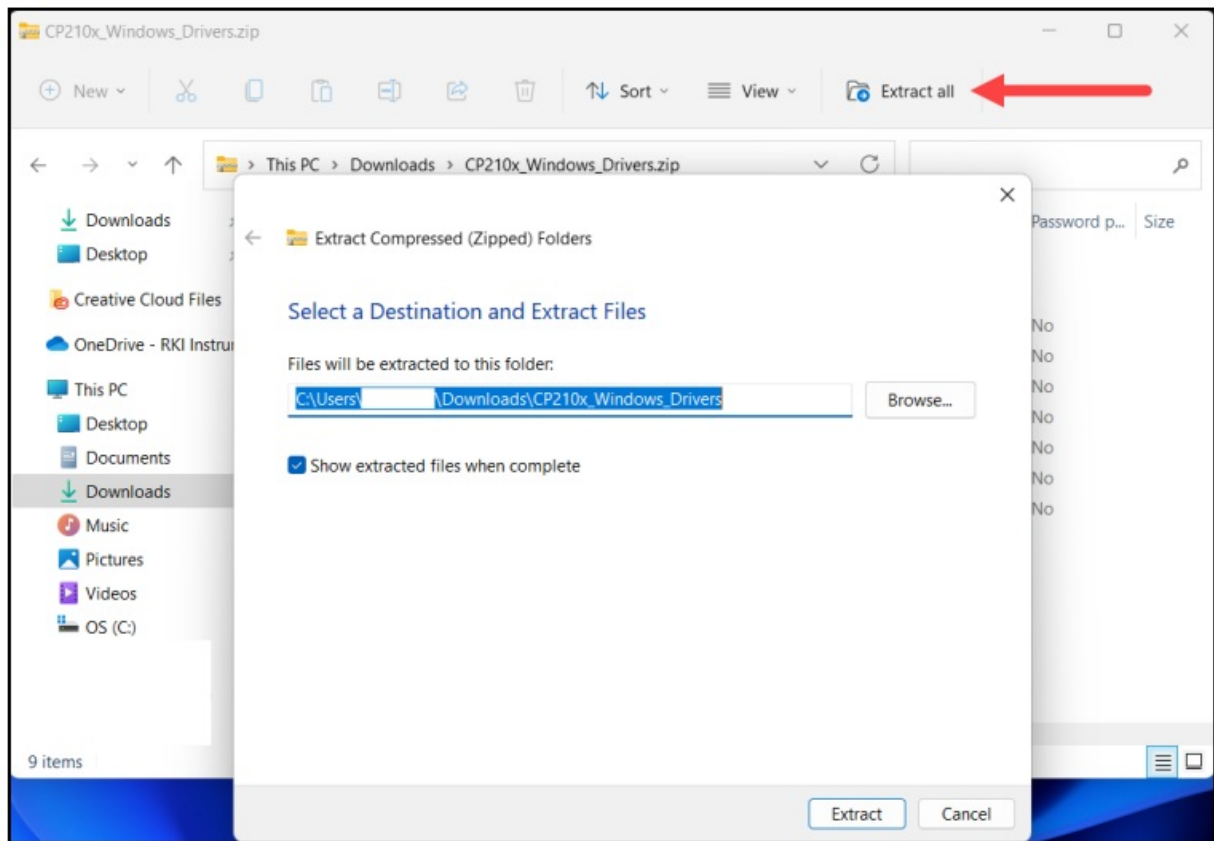
Program Name	Description	Version	File size
<a href="#">IrDA Drivers</a>	IrDA cable drivers for Part # 47-5084RK-01	6.7.6	7.2 MB
<a href="#">03-Series Datalogging</a>	Datalogging Software	04710	29 MB
<a href="#">03-Series User Setup</a>	User Setup	04713	4 MB

A red arrow points to the 'IrDA Drivers' link in the first row of the table.

6. After the .zip folder finishes downloading, open File Explorer and navigate to the Downloads folder.



7. Right-click on the folder and select **Extract All** or open the folder. A prompt will appear. Enter the desired location for saving the extracted files.



8. A new window will appear, displaying the newly extracted files in the location entered in the previous step. Double-click on the appropriate .exe file for your computer to begin installation.
9. Proceed through the on-screen installation process using the driver installer.




10. Click Finish to exit the installer.



**IrDA Cable Driver Installation Instructions**

## Documents / Resources

	<p><a href="#">RKI Instruments Four Gas Monitor</a> [pdf] Installation Guide Four Gas Monitor, Four, Gas Monitor, Monitor</p>
---	---

## References

- [RKI RKI Gas Detectors - Portable Gas Monitors - LEL, PID, H2S, CO, O2 Sensors](#)
- [User Manual](#)

[Manuals+](#), [Privacy Policy](#)

This website is an independent publication and is neither affiliated with nor endorsed by any of the trademark owners. The "Bluetooth®" word mark and logos are registered trademarks owned by Bluetooth SIG, Inc. The "Wi-Fi®" word mark and logos are registered trademarks owned by the Wi-Fi Alliance. Any use of these marks on this website does not imply any affiliation with or endorsement.