

# Ritual Electronics Diviser Eurorack Module On ModularGrid User Manual

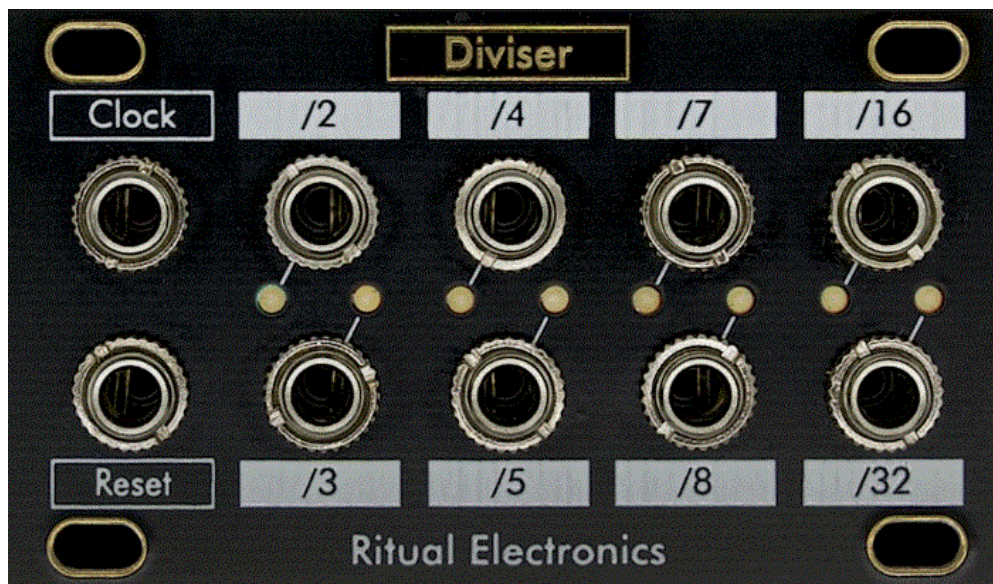
[Home](#) » [Ritual Electronics](#) » Ritual Electronics Diviser Eurorack Module On ModularGrid User Manual 

## Contents

- [1 Ritual Electronics Diviser Eurorack Module On ModularGrid](#)
- [2 Product Information](#)
- [3 Diviser](#)
- [4 Limited warranty](#)
- [5 Installation](#)
- [6 Overview](#)
- [7 Diviser controls](#)
- [8 Divisions](#)
- [9 Counting](#)
- [10 Reset](#)
- [11 Patches](#)
- [12 Documents / Resources](#)
  - [12.1 References](#)

# Ritual Electronics

Ritual Electronics Diviser Eurorack Module On ModularGrid



## Product Information

### Ritual Electronics

Thank you for purchasing Ritual Electronics Diviser. Your module has been assembled with care in our studio in Marseille, France. You can find your module on Modulargrid: <https://www.modulargrid.net/e/ritual-electronics-diviser> For any remarks and information, contact us at: [contact@ritualelectronics.com](mailto:contact@ritualelectronics.com) For video demos and patch ideas check: <https://www.youtube.com/ritualelectronics>, <https://www.instagram.com/ritualelectronics>

### Warranty

Ritual Electronics warrants this product to be free of defects in materials or construction for a period of one year from the date of purchase. Malfunctions resulting from wrong power supply voltages, backward or reversed euro rack bus board cable connection, abuse of the product, or any other causes determined by Ritual Electronics to be the fault of the user are not covered by this warranty, and normal service rates will apply. During the warranty period, any defective products will be repaired or replaced, at the option of Ritual Electronics, on a return-to-Ritual Electronics basis with the customer paying the transit cost to Ritual Electronics. The return of your module is on us. Ritual Electronics implies and accepts no responsibility for harm to persons or apparatus caused through the operation of this product.

### Installation

1. Always turn your Eurorack case off before installing a module.
2. Do not touch any electrical terminals when attaching any Eurorack bus board cable.
3. Diviser does not have a shrouded header. Please connect it with care. Align the power cable's red stripe with the Red text on the module.
4. Ritual Electronics Diviser does require 25mA on +12V, 3mA on -12V, and 0mA on 5V.
5. You will need 14HP of free 1U space in your Eurorack case to install Diviser. The module is 35mm deep.

### Overview

The divider is a 1U clock divider with odd & even outputs. It can divide a signal by 2, 3, 4, 5, 7, 8, 16 and 32 simultaneously. Being based on CMOS chips it can run at audio speed (and higher) to create subharmonics and/or rhythms from an oscillator. The reset input resets all the outputs to a high state. Comparators are built in both the Clock and Rest inputs with the threshold set at 2.5V. It means you can use any type of signal in these inputs.

### Diviser Controls

- **Clock Input:** Signal to be divided. Built-in comparator.
- **Reset Input:** Resets the divider on a High. Built-in comparator going into a gate to trigger converter.

## Divisions

The divider outputs 8 different clock divisions. Each output has a 50% duty cycle (equal time spent on and off). Here is a visual representation of the different outputs in relation to the clock input.

## Counting

This shows how the Reset input behaves. No effect if it is during a high. It will create a High if the effect is triggered during a Low. Here we have a straight clock, an unrelated trigger pattern in the Reset in, and the resulting pattern is taken from the /2 output.

## Diviser

Thank you for purchasing Ritual Electronics Diviser.

Your module has been assembled with care in our studio in Marseille, France.

- You can find your module on Modulargrid: <https://www.modulargrid.net/e/ritual-electronics-diviser>
- For any remarks and information, contact us at: [contact@ritualelectronics.com](mailto:contact@ritualelectronics.com)
- For video demos and patch ideas check: <https://www.youtube.com/ritualelectronics>  
<https://www.instagram.com/ritualelectronics>

## Limited warranty

- Ritual Electronics warrants this product to be free of defects in materials or construction for a period of one year from the date of purchase.
- Malfunctions resulting from wrong power supply voltages, backward or reversed euro rack bus board cable connection, abuse of the product or any other causes determined by Ritual Electronics to be the fault of the user are not covered by this warranty, and normal service rates will apply.
- During the warranty period, any defective products will be repaired or replaced, at the option of Ritual Electronics, on a return-to-Ritual Electronics basis with the customer paying the transit cost to Ritual Electronics. The return of your module is on us.
- Ritual Electronics implies and accepts no responsibility for harm to persons or apparatus caused through the operation of this product

## Installation

- Always turn your Eurorack case off before installing a module.
- Do not touch any electrical terminals when attaching any Eurorack bus board cable.
- Diviser does not have a shrouded header. Please connect it with care. Align the power cable's red stripe with the "Red" text on the module.
- Ritual Electronics Diviser does require 25mA on +12V, 3mA on -12V and 0mA on 5V.
- You will need 14HP of free 1U space in your Eurorack case to install Diviser. The module is 35mm deep.

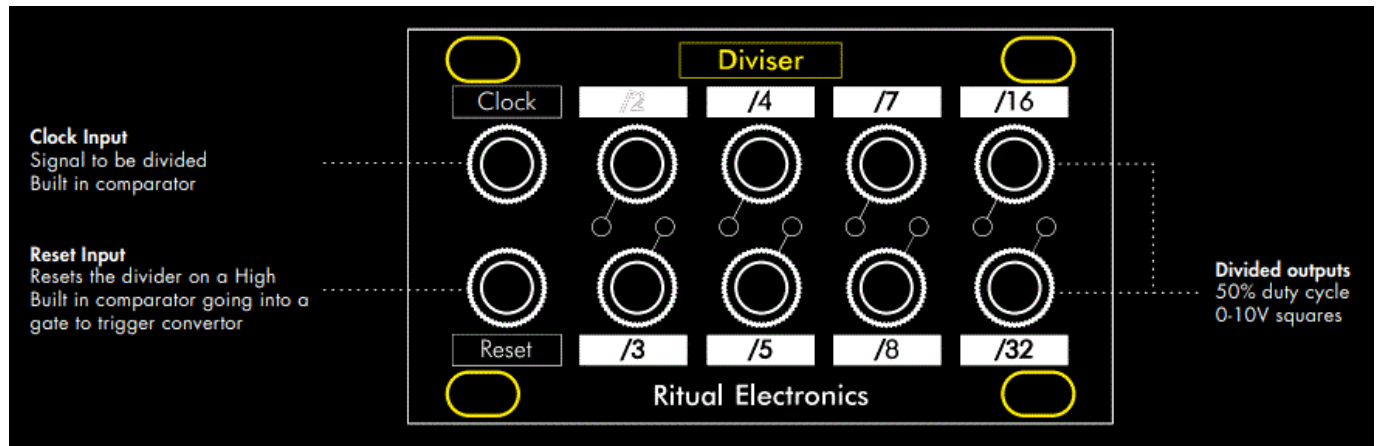
## Overview

- Diviser is a 1U clock divider with odd & even outputs. It can divide a signal by 2, 3, 4, 5, 7, 8, 16 and 32 simultaneously.
- Being based on CMOS chips it can run at audio speed (and higher) to create subharmonics and/or rhythms

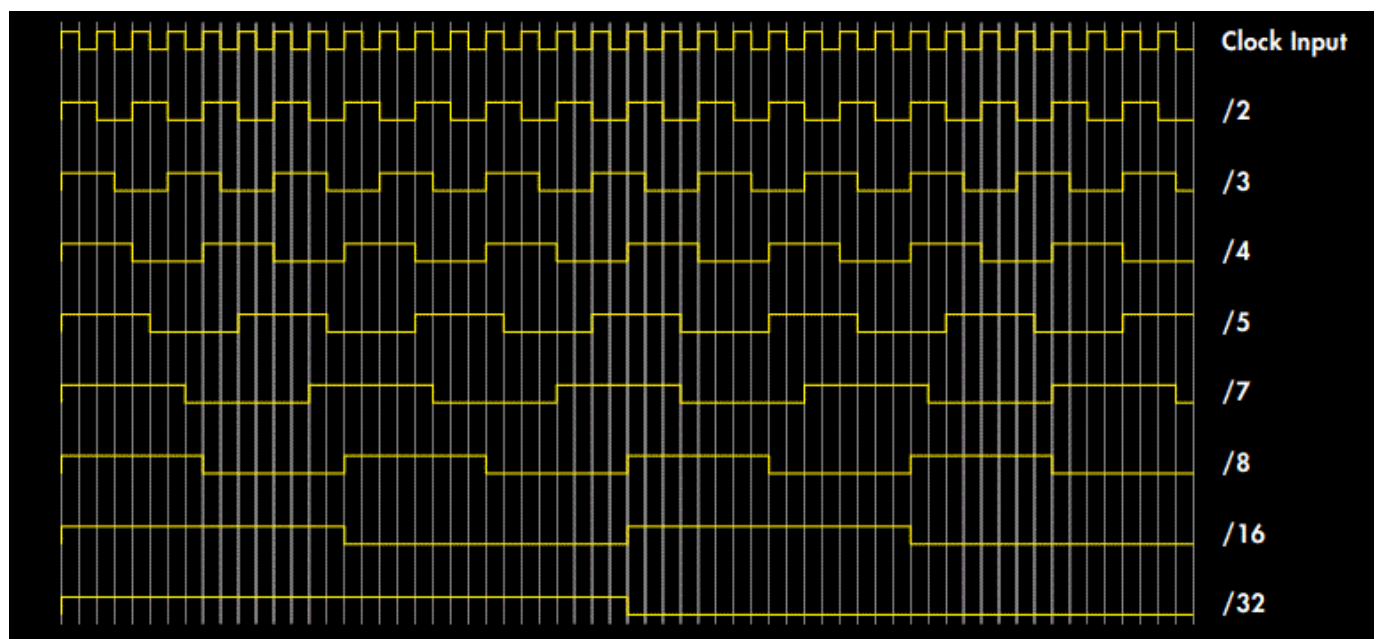
from an oscillator.

- The reset input resets all the outputs to a high state.
- Comparators are built in both the Clock and Rest inputs with the threshold set at 2.5V. It means you can use any type of signal in these inputs.

## Diviser controls

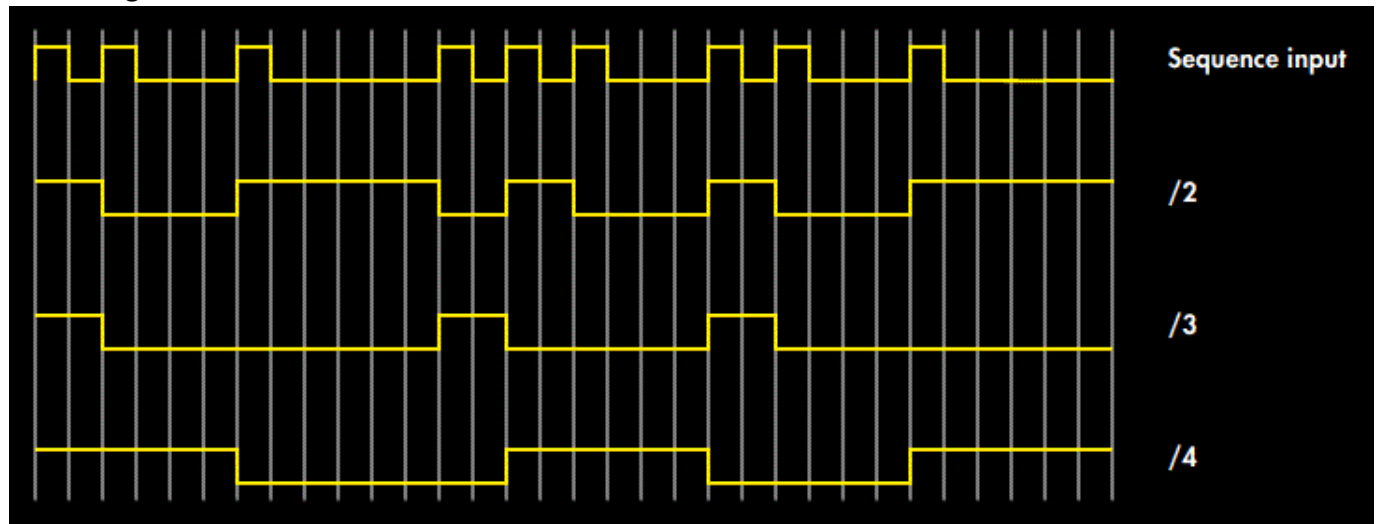


## Divisions



- Diviser outputs 8 different clock divisions. Each output has a 50% duty cycle (equal time spent on and off). Here is a visual representation of the different outputs in relation with the clock input.

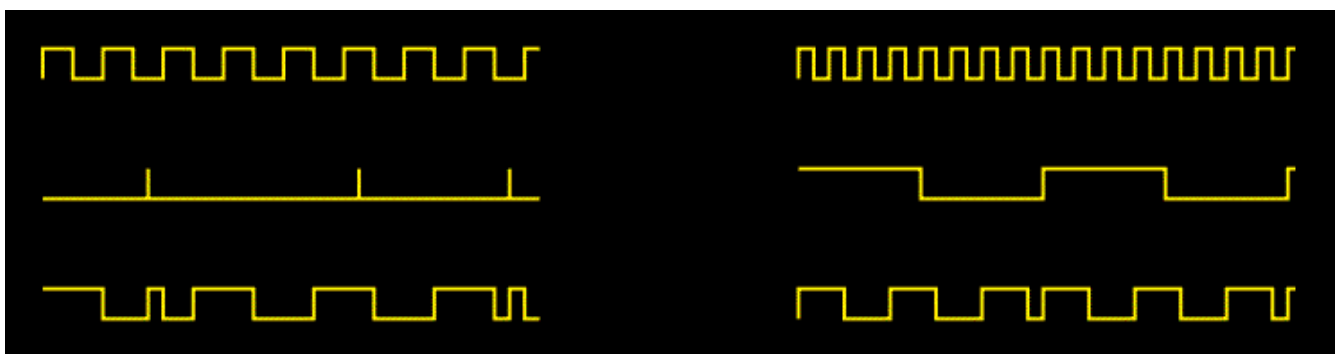
## Counting



- We are referring to devices as Diviser as clock dividers. When using a straight clock it is indeed the effect we observe. See the diagram above, in Divisions.
- If we use a gate sequence in place of the steady clock we can discuss another aspect of Diviser. The chips used in the module are marketed as electronic counters. They do not divide per say, they count the pulses and output accordingly.
- The diviser counts the rising edges of incoming pulses. You can then generate slowed-down sequences related to your input. Resets can be used to add more pulses to the resulting sequences – see next page.

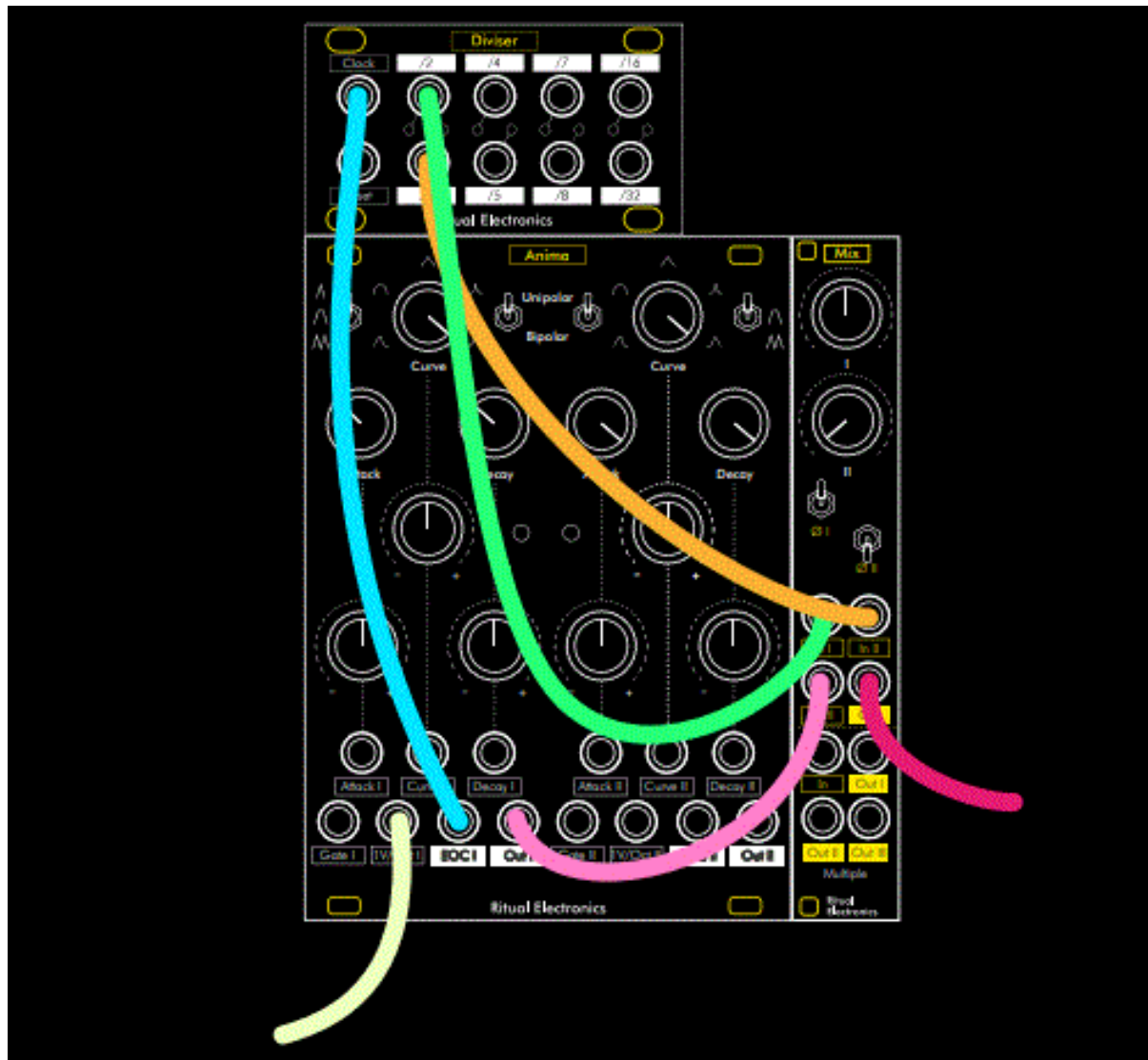
## Reset

- Diviser follows what has been known as a “musical reset”. Instead of dropping to a Low when the divider receives a reset input, Diviser goes High. It is the expected behavior when you want to reset a divider/sequencer/... You usually want your module to start the first beat/whatever of the sequence when it receives a trig in Reset.
- On top of this there is a gate to trigger in the Reset input. Meaning the signal you put in the Reset can be as long as you want, it will only reset the divider at its rising edge. If you want to pause Diviser we recommend doing it at the Clock input.



- This shows how the Reset input behaves. No effect if it is during a high. It will create a High if the effect is triggered during a Low. Here we have a straight clock, an unrelated trigger pattern in the Reset in, and the resulting pattern is taken from the /2 output.
- When using an odd division output, you can make use of an even division to reset it back when a bar starts for example. Here you can see a straight beat, a reset signal taken from the /8 output and the resulting pattern at output /3.

## Patches



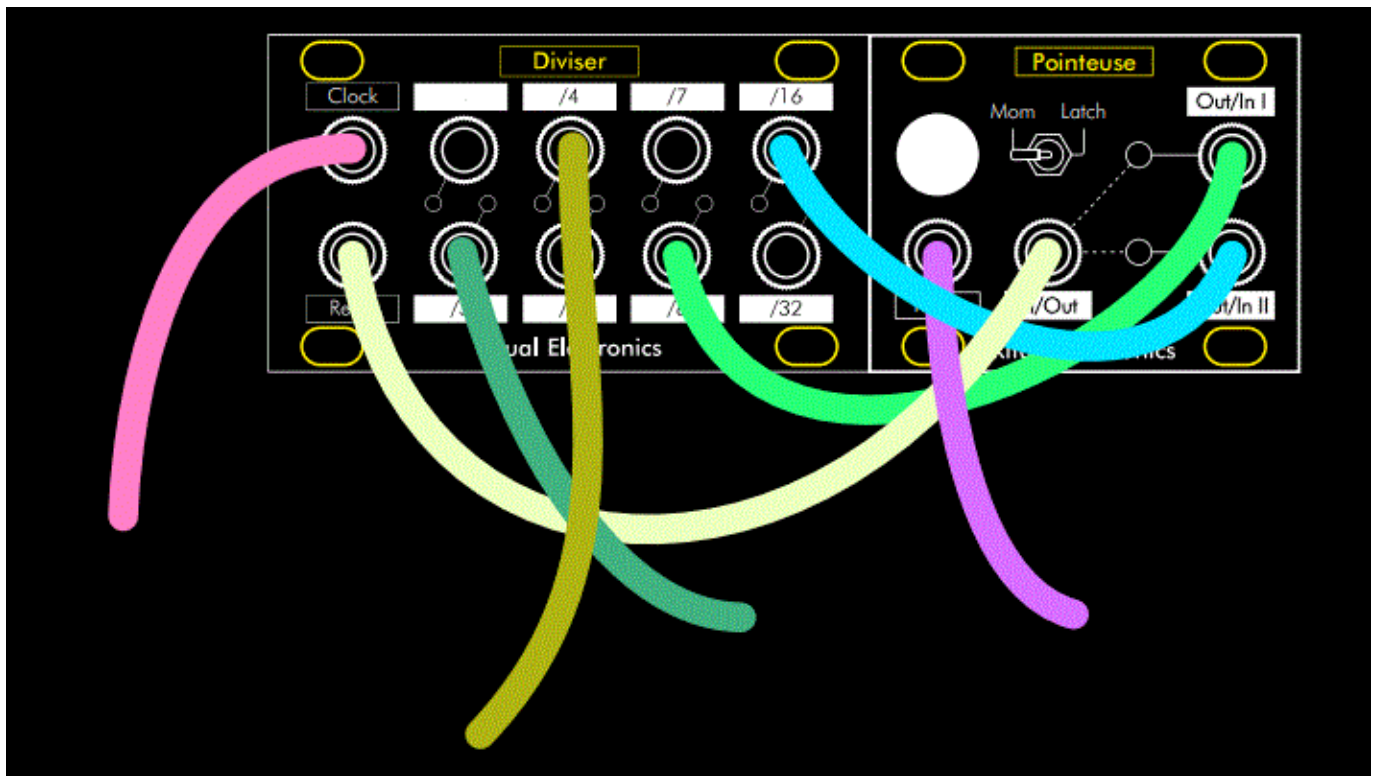
### Patch #1 – Harmonic oscillator

- Diviser can take high-frequency audio at its input and act as a sub-oscillator. Mixing the outputs together with the oscillator you can get a really thick-sounding oscillator.
- Note that Diviser outputs unipolar gates, you may want to offset them by -5V for best results. Or as pictured, inverse the phase of one of the divisions.
- The odd divisions will give you second, fourth, and sixth intervals, octaves down.
- You may want to use a faster-than-usual oscillation.
- You can play with the reset input to find beating patterns.

### Patch notes

- Oscillator, Out ——— Mixer, In
- Oscillator, Square Out ——— Diviser, Clock In
- Diviser, Clock Outs ——— Mixer, Ins






## Patch #2 – More complex sequencing

- Try switching from different reset divisions with the help of Pointeuse. Clock Diviser from a clock or a sequence of gates. Clock Pointeuse with an unrelated clock for more variations.

## Patch notes

- Diviser, Clock Outs ——— Pointeuse, Out/In I & II
- Pointeuse, In/Out ——— Diviser, Reset In

## Documents / Resources

	<a href="#">Ritual Electronics Diviser Eurorack Module On ModularGrid</a> [pdf] User Manual Diviser Eurorack Module On ModularGrid, Diviser, Eurorack Module On ModularGrid, Module O n ModularGrid, On ModularGrid
---	---

## References

- [Instagram Ritual Electronics \(@ritualelectronics\)](#) • [Instagram photos and videos](#)
- [User Manual](#)