



RITTAL VX 8617.630 Partial Mounting Plates Instruction Manual

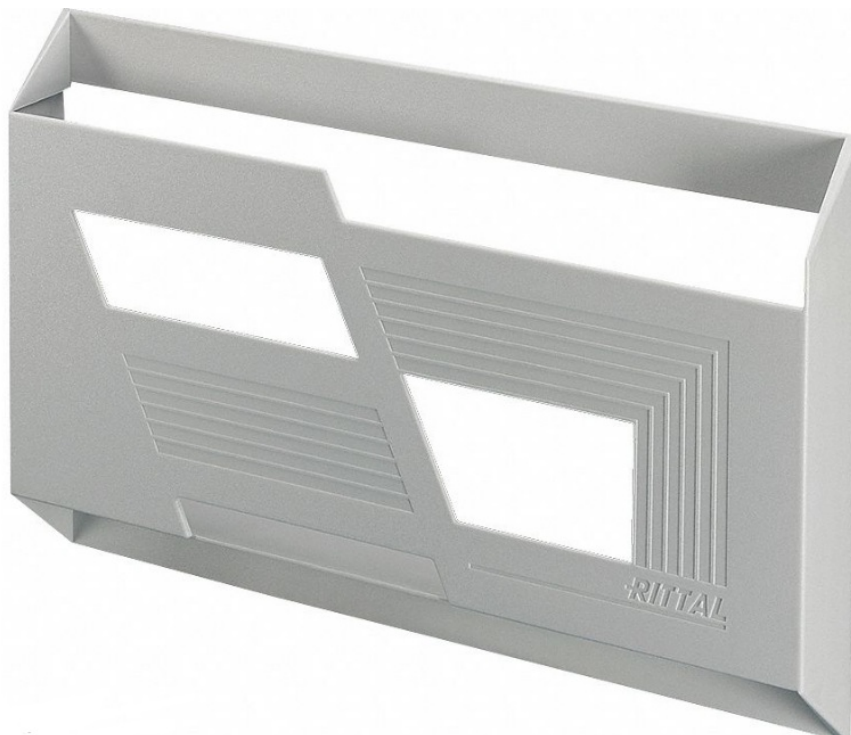
[Home](#) » [RITTAL](#) » RITTAL VX 8617.630 Partial Mounting Plates Instruction Manual 

Contents

- [1 RITTAL VX 8617.630 Partial Mounting Plates](#)
- [2 Features Approvals](#)
- [3 Documents / Resources](#)
 - [3.1 References](#)
- [4 Related Posts](#)



RITTAL VX 8617.630 Partial Mounting Plates



VX 8617.630 – Partial mounting plates for VX, VX SE, PC, IW

To accommodate additional components inside the enclosure. Partial mounting plates can be used extremely flexibly, providing a platform for a diverse range of applications.

Features

Model No.	VX 8617.630
Product description	To accommodate additional components inside the enclosure. Partial mounting plates can be used extremely flexibly, providing a platform for a diverse range of applications.
Material	Sheet steel, 2.5 mm
Surface finish	Zinc-plated
Supply includes	Assembly parts
Installation options	For optional installation either upright as a vertical mounting surface, or flat as a horizontal base. Attach directly onto the enclosure section With a set forward configuration, attachment is via punched sections with mounting flanges at any mounting level in the enclosure For multi-level installation one behind the other, partial mounting plates may be vertically hinged, via hinge attachment, to allow rapid access to the levels behind.
Note	Adaptor rail VX is required for installing in VX SE, PC, IW
Dimensions	Width: 1,100 mm Depth: 400 mm
To fit	Enclosure type: VX VX SE PC Width: = 1,200 mm Depth: = 500 mm
Packs of	1 pc(s).
Weight/pack	11 kg
Copper weight (kg per piece)	0
Customs tariff number	94032080
EAN	4028177919488
ETIM 7.0	EC000213
ECLASS 8.0	27409216

Approvals

- Approvals GOST

© Rittal 2022

Documents / Resources



[RITTAL VX 8617.630 Partial Mounting Plates](#) [pdf] Instruction Manual
VX 8617.630 Partial Mounting Plates, VX 8617.630, Partial Mounting Plates, Mounting Plates, Plates

References

-  [Rittal GmbH & Co. KG “ Enclosures, Power distribution, Climate control, IT infrastructure, Software & services, Automation](#)

Manuals+.