



RiteSensor TPMS Sensor for Bluetooth TPMS User Guide

[Home](#) » [RiteSensor](#) » RiteSensor TPMS Sensor for Bluetooth TPMS User Guide 



Contents

- [1 Product Information](#)
- [2 RITE-SENSOR® with Rubber Valve](#)
- [3 RITE-SENSOR® with Aluminium Valve](#)
- [4 INSTALLATION GUIDE](#)
- [5 Documents / Resources](#)
 - [5.1 References](#)
- [6 Related Posts](#)

Product Information

Compliance Notice

The RITE-SENSOR® complies with UKCA and CE regulations.
Operation is subject to the following two conditions:

1. This device may not cause harmful interference, and
2. This device must accept any interference received, including interference that may cause undesired function.

Warning: Any changes or modifications in construction of this device which are not expressly approved by the

party responsible for compliance could void the user's authority to operate the equipment.

Contents

The RITE-SENSOR ® comes assembled with a rubber or clamp-in valve stem and anti-rotational pin.

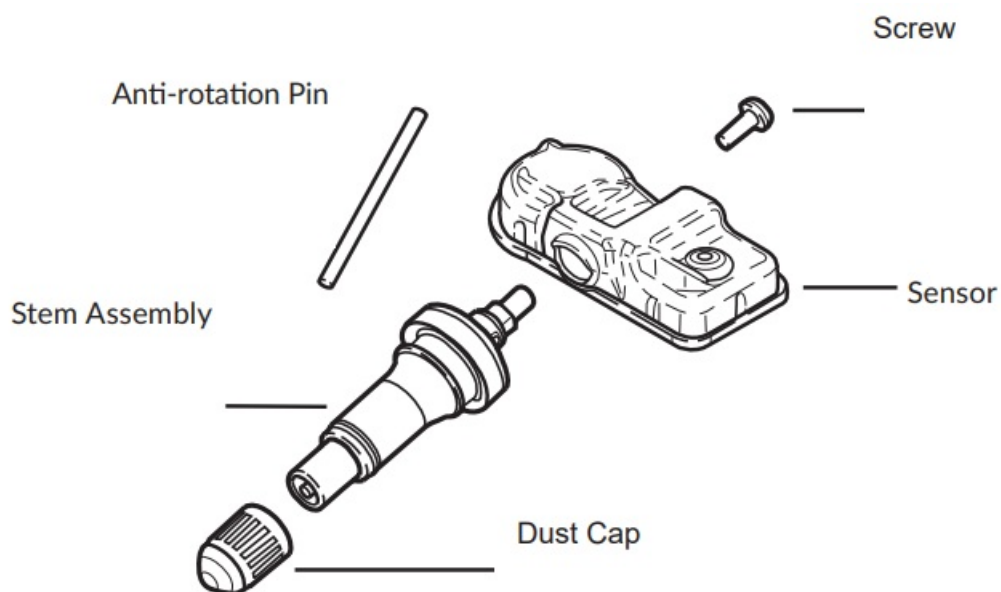
Warranty

The warranty period of any RITE-SENSOR ® is 24 months from the date of purchase or after a demonstrated use of 40.000km, whatever occurs first. Any warranty claims must be presented to Bartec Auto ID within 30 days of the defect being detected.

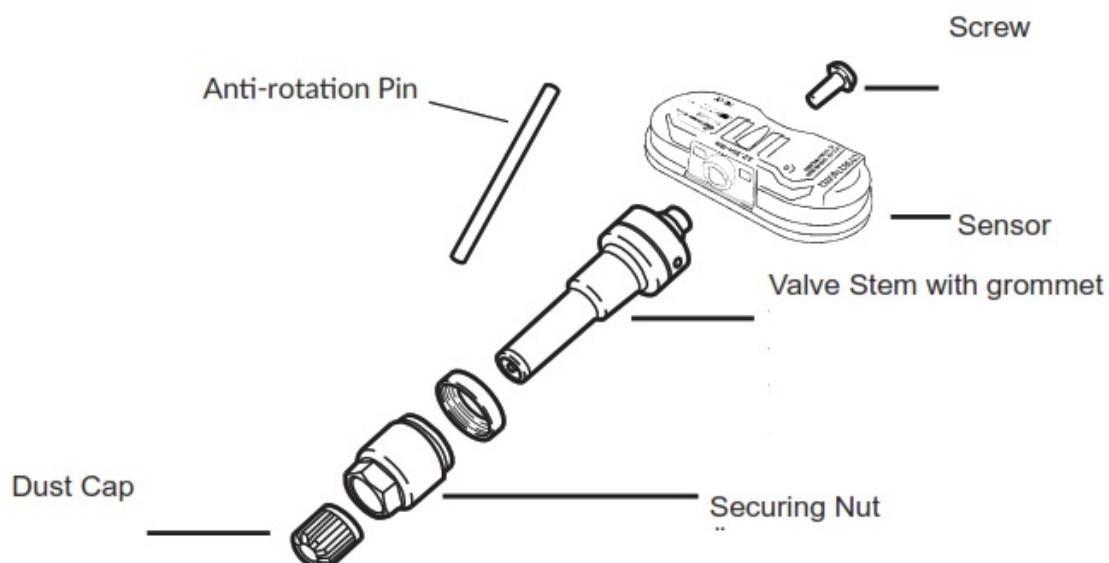
Caution

Any maintenance and repair work must be carried out by trained experts. Failure to do so may result in the failure of the TPMS faulty or incorrect installation of the product. Read the installation and safety instructions carefully before installing the sensor. When the tyre bead is initially broken, ensure the valve is on the opposite side of the wheel from the bead breaker blade. When a tyre is removed or a sensor is serviced it is highly recommended to replace or service the sensor. A clamp-in sensor is properly serviced by replacing the valve nut / collar / core, rubber grommet and if necessary, the valve stem. It is very important to tighten the nut/collar to the correct torque of 5.0Nm (n/a for rubber).

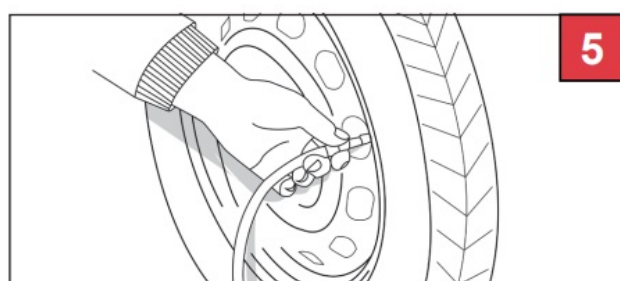
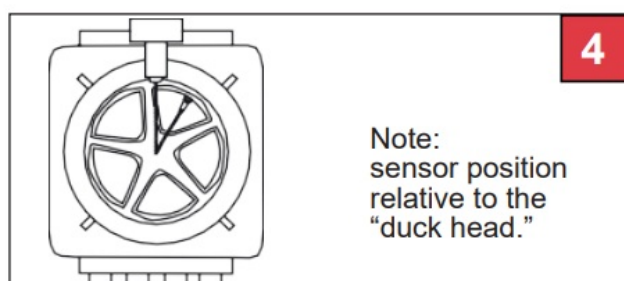
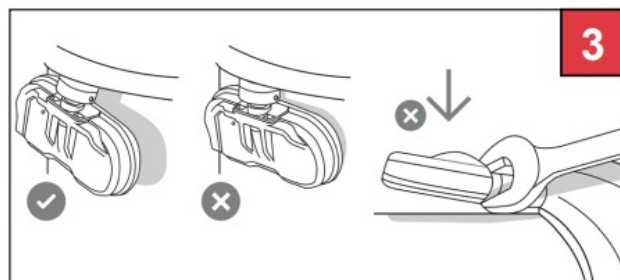
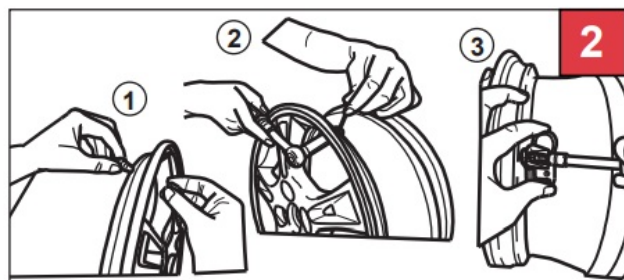
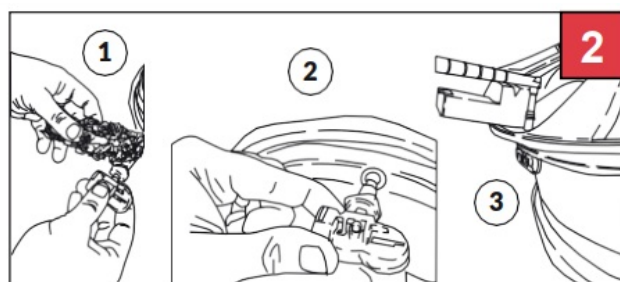
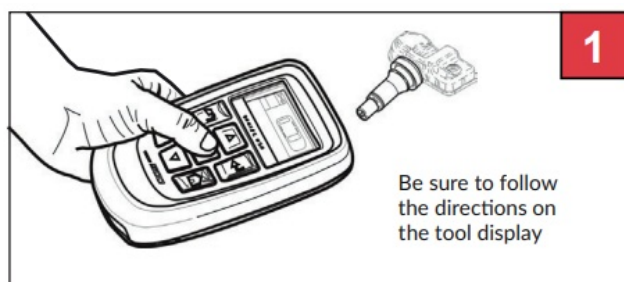
RITE-SENSOR ® with Rubber Valve



RITE-SENSOR® with Aluminium Valve



INSTALLATION GUIDE



1. Check functionality of sensor and program before mounting.
2. Use assembly compound for rubber valve. Do not coat sensor!
Tighten clamp-in valve to a torque of 5.0Nm
3. Ensure that the sensor is not in direct contact with the rim well
4. Mount the tire to the wheel
5. Inflate tire to recommended pressure



RITE-SENSORS with rubber valves have a maximum permitted speed of 210 km/h



RITE-SENSORS with metal valves have a maximum permitted speed of 330 km/h



[RiteSensor TPMS Sensor for Bluetooth TPMS](#) [pdf] User Guide
TPMS Sensor for Bluetooth TPMS, TPMS, Sensor for Bluetooth TPMS, Bluetooth TPMS

References

- [B Home page](#)

Manuals+.