

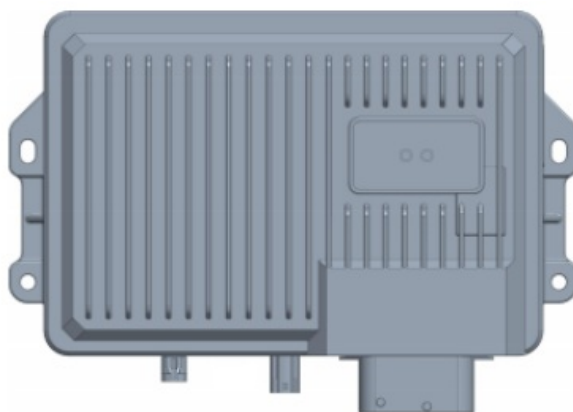


## Contents [ [hide](#) ]

- [1 RISING SEED-060A-06-G2 Handbook GPS Antenna Device](#)
- [2 Specifications](#)
- [3 Functions and characteristics](#)
- [4 Appearance](#)
- [5 Product Program download and update](#)
- [6 Program burning](#)
- [7 Connection to external controller](#)
- [8 FAQs](#)
- [9 Documents / Resources](#)
  - [9.1 References](#)



## RISING SEED-060A-06-G2 Handbook GPS Antenna Device



## Specifications

- Model: SEED-060A-06(G2)
- Version: 1.00
- Functions: FMBT/WIFIGPS4G, exposed antenna, MK video input/output, 6 sets of cameras, display/host device separation with FPD-Link III data transfer, analog/digital inputs, support for 2 \*CAN and ISO11898 CAN2.0BJ1939
- Connector Type: TE 2315885-1

## Functions and characteristics

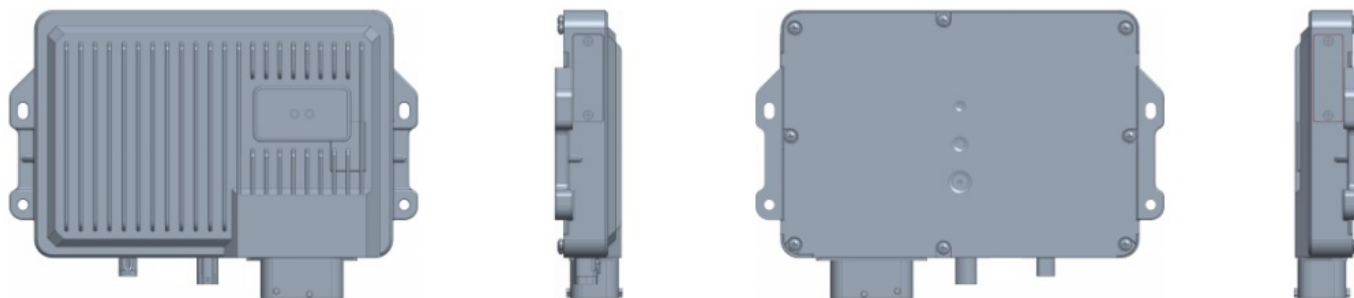
- FM BT/WIFI GPS 4 G and an exposed antenna
- VideoDio input and output
- 6 sets of cameras
- Separate the display and the host device and display data transfer through FPD-Link III
- 2 couples of analog input 1 couple of digital input
- Support 2 \*CAN and ISO11898 CAN2.0B J1939
- Connector Type TE 2315885-1 recommended matching connector type TE 0-2209544-9
- Function overview

No.	Function	No.	Function	Describe
1	Communi cation	1.1	CAN communicatio n	Support ISO11898 CAN2.0B J1939 CanOpen
		1.2	4G communication	Upload datathe to the remote contro l center.  Download the data surveillance cent er.  Support 4G LTE high-speed transmi ssion

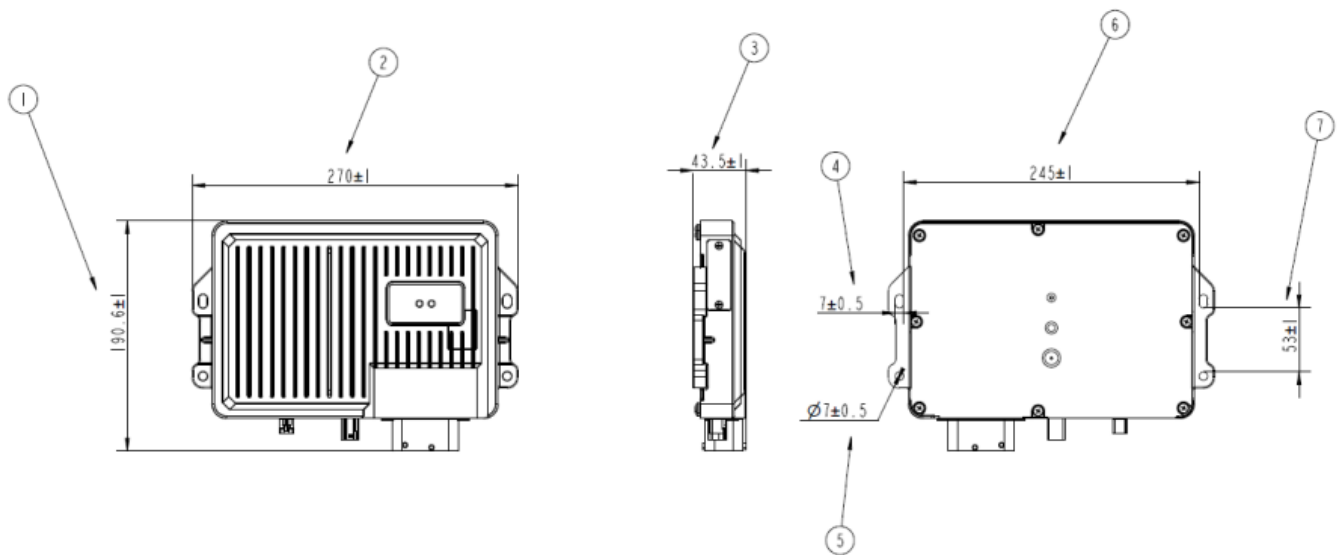
		1.3	GPS communication	Get the latitude and longitude of the satellite and other information
		1.4	USB communication	Support update through USB
		1.5	Bluetooth communication	Supports connecting to a smart smartphone via Bluetooth. The user can make calls or listen to music via Bluetooth.
2	HMI	3.1	FM	Integrated FM function.
		3.2	play music	Support listening to music via Bluetooth.
		3.3	Speech recognition	Support speech recognition and microphone noise reduction.
4	Input & output	4.1	An audio analog signal output.	Audio left and right channel output.
5	MIC	5.1	MIC input	Support MIC input and Bluetooth.

## Product appearance, structure, and function introduction

### Appearance



### Size parameters



## Port capabilities definitions

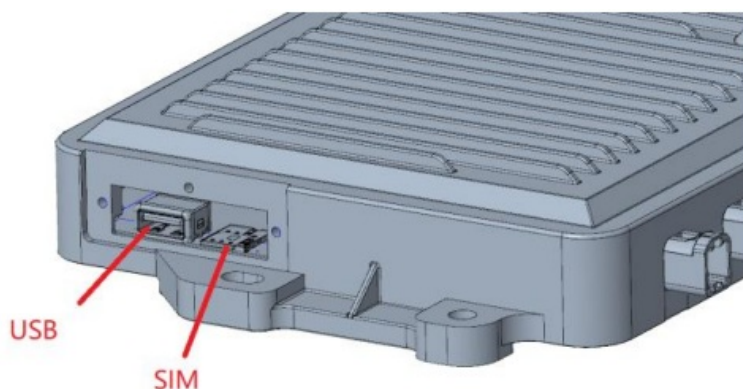
Item		Function	Pin No.	Note
Analogic input	Voltage input	AI_V1	J2-21	Range 0~10V
				Acquisition accuracy 0.5%
				Resolution
		AI_V2	J2-22	0.025%
Digital input	Voltage input	DI_L	J2-37	Door signal acquire
	Camera signal	CAMRA3	J2-14	
		CAMRA4	J2-29	
		CAMRA1	J2-15	
		CAMRA2	J2-30	

Camera		CAMRA5	J2-27	
		CAMRA6	J2-26	
	Power	+12V	J2-49	Voltage 12V C urrent 1.2A
		GND	J2-50	GND
MIC	MIC signal	MIC_Signal_1 _J	J2-10	
		MIC_Signal_2 _J	J2-12	
	GND	MIC_GND_J1	J2-11	GND
		MIC_GND_J2	J2-13	
Communication	USB HOST	USB3_5V	J2-3	Voltage 5V,Current 1A max
		USB3_GND	J2-2	
		USB3_DP	J2-5	
		USB3_DM	J2-4	
	CAN1	CANA_L	J2-51	Without 120Ω resistor on ho st device
		CANA_H	J2-52	
	CAN2	CANB_L	J2-53	
		CANB_H	J2-54	
		GND	J2-47	
		GND	J2-45	
		GND	J2-36	

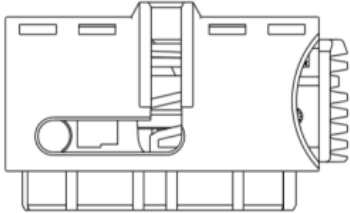

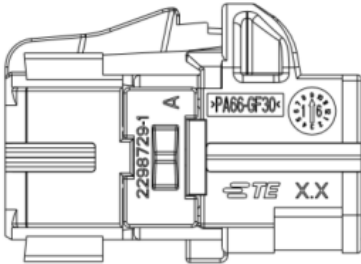
Power	GND	GND	J2-25	GND
		GND	J2-24	
		GND	J2-20	
		GND	J2-19	
		GND	J2-17	
	Power	VIN	J2-1	Voltage 24V
			J2-16	Range 16V-32 V
		VDD_24V	J2-31	The power supply of the display board
		ACC	J2-18	SMI signal
		AI_5V	J2-46	5V power output
Audio output	Right channel output	Right channel signal +	J2-8	
		Right channel signal-	J2-9	
	Left channel output	Left channel signal+	J2-6	
		Left channel signal-	J2-7	
Reset	Software reset	LM_RESET	J2-48	LowPower Reset

## Product Program download and update

### Hardware development platform



When the user needs to download or update the program, please open the metal cap on the left of the device. Then connect the device to your computer via a USB cable and download or update the program through the computer. The Debugging Program can also be used through this USB connector. When purchasing our products, we provide the matching connector to customers as follows

1	TE 60 Pin Connector	0-2209544-9		TE
2	HSD connector	D4K14A-1D5A5-C		Rosenberg
3	4G/GPS/FM/WIFI ANT	C-2298721-1-C		TE

### Software development platform

Support HM configuration Software, adopt the standard IDE development environment, and the programmer can develop HM application software based on the requirements of the project. Programmers can refer to common examples then quickly develop applications. Include

1. HM human-machine interface includes normal Human-machine operation controls
2. Based on the HM communication function library, including CAN communication 4G communication GPS communication, and n and WIFI communication.

## **Program burning**

### **HM Application burning**

1. Create an APP folder at the root of the USB disk, and place the HM configuration.
2. Connect the USB disk to the USB connector, power on the host device the screen pops up options, click "burn", the LED on the USB disk lights, and the screen shows burn progress.
3. When the updates have finished, you don't need to restart the device; the display restarts automatically..

### **Core and device burning in.ng.**

1. Connect the computer and the USB connector on the host device via a USB cable..
2. Turn off the Windows system firewall.
3. If in "Device Manager-> Network adapters" you can't find rndis network device, please upup tRNDISdis drivers.
4. Set the IP Display IP and Servers IP computer IP must on the same network segment.
  1. Set the computer to 192.168.1.66
  2. Set the display to 192.168.1.62. It is not modifiable by default.
  3. Display restarts and enter Uboot mode, enter commands in the serial console  
setenv serverip 192.168.1.66  
setenv ipaddr 192.168.1.62  
saveenv
5. Create a folder on the desk, put tftpd32.exe core, and device trees at the root of this folder.



1. Run tftpd32.exe server interface, choose local 192.168.1.66
2. Updated device trees, enter commands in the serial console run update\_fdt
3. Update core, enter commands in the serial console run update\_kernel

## Connection to external controller



## Product parameters and environmental indicators

No.	Item	Description
1	Core	M PU A53
2	Core frequency	MPU 1.5GHz

3	Normal parameters	<p>Operating system MPU Linux</p> <p>DDR3 memory 2G</p> <p>Memory 8GB</p> <p>Power supply 16 ~ 32 V.DC</p>
---	-------------------	--

	<p>command voltage 24 V.DC 32 V can't work for long hours</p> <p>Output voltage 12V.DC 1A</p> <p>Standby current &lt;10mA</p> <p>Camera*6</p>
Communication	<p>CAN*2 500kbit / 250kbit</p> <p>USB*1</p> <p>4G communication</p> <p>GPS/Beidou Support switch to Beidou independently.</p> <p>Bluetooth Support Bluetooth phone</p> <p>WIFI frequency 2.4G,standard 802.11b/g/n/ac</p>
Connector	60 pin
Development environment	Linux

Operating environment	<p>Operating temperature - 20 ~ 65°C</p> <p>Storage temperature - 25 ~ 80°C</p> <p>Anti-vibration: 4 – 300 HZ 10mm 6.8G</p> <p>Shock resistance 50G 6ms &amp; 11ms</p> <p>Relative humidity: 10 % ~ 95 %</p> <p>Protection Class IP 65</p>
ESD Class	Air: $\pm 15\text{kV}$ Contact: $\pm 8\text{kV}$
ISO7637 EMI Class	<p>Power ISO7637 – 2 IV</p> <p>Signal: ISO7637 – 3</p>
Anti-surge	IEC61000–4–5 IV
Size	270×190.6×43.5 mm
Weight	2.3Kg

## Note

1. The connection between the main engine shell and the grounded metal part should have a low impedance value. It is determined whether it is qualified by the following tests. In transient interference injection, the voltage drop is measured between the main engine shell and the grounded metal parts of the iron, and the maximum voltage on the housing is required to be not greater than 0.8V during the whole process of interference injection. According to some characteristic parameters during interference injection, the required ground impedance range is calculated: in the 0~100MHz frequency band, the impedance value shall not exceed 60mΩ;
2. In addition to the good grounding of the host shell, all input and output points, such as sensors and loads connected to the host, must be connected into a closed loop. That is, all input and output grounds must be connected to the ground of the host.;

3. It is forbidden to carry out hot plugging action on connectors with electricity, so as not to affect the stability of the product.

Please take notice that changes or modifications not expressly approved by the party responsible for compliance could void the user’s authority to operate the equipment. This device complies with Part 15 of the FCC Rules. Operation is subject to the following two conditions:

- 1. This device may not cause harmful interference, and
- 2. This device must accept any interference received, including interference that may cause undesired operation.

This equipment complies with FCC radiation exposure limits set forth for an uncontrolled environment. This equipment should be installed and operated with a minimum distance of 20cm between the radiator & your body.

## FAQs

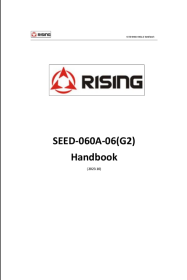
**Q: How do I connect the cameras to the device?**

A: Connect the cameras to the designated camera ports as per the port capabilities definitions provided in the user manual.

**Q: Can I update the software wirelessly?**

A: No, software updates need to be done by connecting the device to a computer via a USB cable as described in the instructions.

## Documents / Resources

	<p><a href="#">RISING SEED-060A-06-G2 Handbook GPS Antenna Device [pdf]</a></p> <p>Instruction Manual</p> <p>SEED-060A-06-G2, SEED-060A-06-G2 Handbook GPS Antenna Device, Handbook GPS Antenna Device, GPS Antenna Device, Antenna Device</p>
---	--

## References

- [User Manual](#)

■ **RISING**

🔍 Antenna Device, GPS Antenna Device, Handbook GPS Antenna Device, RISING, SEED-060A-06-G2, SEED-060A-06-G2 Handbook GPS Antenna Device

---

## Leave a comment

Your email address will not be published. Required fields are marked \*

Comment \*

Name

Email

Website

☐ Save my name, email, and website in this browser for the next time I comment.

**Post Comment**

**Search:**

**Search**

[Manuals+](#) | [Upload](#) | [Deep Search](#) | [Privacy Policy](#) | [@manuals.plus](#) | [YouTube](#)

This website is an independent publication and is neither affiliated with nor endorsed by any of the trademark owners. The "Bluetooth®" word mark and logos are registered trademarks owned by Bluetooth SIG, Inc. The "Wi-Fi®" word mark and logos are registered trademarks owned by the Wi-Fi Alliance. Any use of these marks on this website does not imply any affiliation with or endorsement.

