



# RISC GROUP RW332KF1 Panda 4-Button 2-Way Keyfob User Guide

[Home](#) » [RISC GROUP](#) » RISC GROUP RW332KF1 Panda 4-Button 2-Way Keyfob User Guide 



## Contents

- [1 RISC GROUP RW332KF1 Panda 4-Button 2-Way Keyfob](#)
- [2 Introduction](#)
- [3 How it works](#)
- [4 Main features](#)
- [5 Operation](#)
- [6 Status LED Indications](#)
- [7 Configuration](#)
- [8 Cleaning and Maintenance](#)
- [9 Technical Information](#)
- [10 Documents / Resources](#)
  - [10.1 References](#)
- [11 Related Posts](#)

**RISC GROUP RW332KF1 Panda 4-Button 2-Way Keyfob**



## Introduction

RISCO Group's new Wireless 2-Way Keyfob / Remote Control combine the most advanced technologies within a contemporary, compact and streamlined design, the ideal choice for homeowners seeking the highest security standards. The keyfob / remote control has been designed for use in family homes, apartments or small offices. This accessory is easy to configure, and is compatible with all RISCO Group's wireless intrusion systems.

## How it works

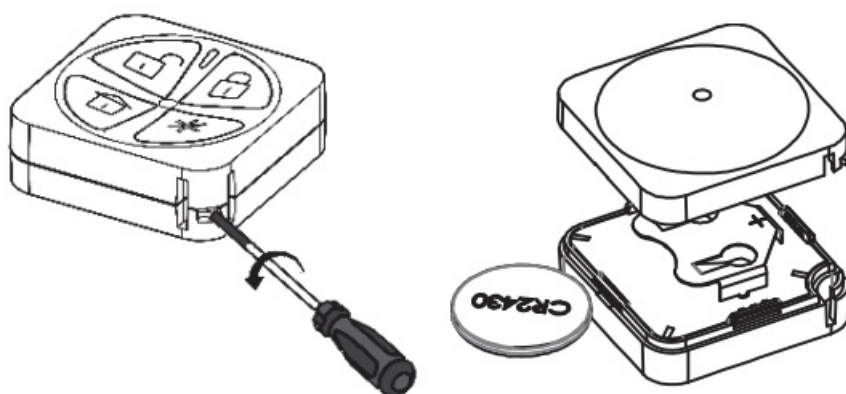


Figure / Figura 1

Figure / Figura 2









Figure / Figura 3

The principal function of the Keyfob / Remote Control is to provide users with a convenient way to control the security system. This accessory is easy to use with large keys and is typically used for arming and disarming as well sending a panic alarm to the system. Being bi-directional enables each command that is sent to the panel to receive a reply status from the panel and indicate the status to the user via the color LEDs. The Keyfob / Remote Control can be mounted on a chain or worn as a pendant.

## Main features

- Bi-directional wireless communication
- Up to 200 m (650 feet) range
- Simple battery replacement

## Operation

Button	Pressed (0.5sec – 2sec)	Hold (over 2sec)
	Disarm	Disarm
	Arm	Arm
	Stay	Stay with entry delay canceled
	Get status	Output toggle
	-	Panic alarm
	-	Allocation (see Configuration section)

## Status LED Indications

The LED lights up after each press, indicating a successful signal transmission.

Operation	1st LED (Send command)	2nd LED (Receive status)
Full Arm (Away)	Green	Red
Part Set (Stay Arm)	Green	Orange
Disarm	Green	Green
Alarm	Green	Blinks red
Low battery	Orange	-
UO activation	Green	Blinks according to panel status

## Configuration

### Allocating the Keyfob / Remote Control to the receiver

The 2-Way Keyfob / Remote Control must identify itself with the system receiver. Allocation can be done by entering the keyfob's 11-digit serial number into the system or by using RF mode.

To allocate the Keyfob / Remote Control:

1. Set the system receiver to Learn Mode.
2. Send an allocation message:



RF – Press the + keys for at least 2 seconds. Code – Enter the 11-digit serial number into the system. In both instances the system receiver will automatically recognize the Keyfob / Remote Control and an allocation message will sound. The LED on the Keyfob / Remote Control will blink.

## Cleaning and Maintenance

### Cleaning the Keyfob / Remote Control

Clean the Keyfob / Remote Control with a dry or damp cloth to remove dirt or dust. Do not expose the keys directly to liquid.

### Replacing the Keyfob / Remote Control battery

1. Using a small screwdriver, twist to open the Keyfob / Remote Control (see Figure 1).
2. Remove the old battery.
3. Press any one of the keys.
4. Insert the new battery (see Figure 2).

5. Close the Keyfob / Remote Control cover (see Figure 3).


Replace the batteries once a year or whenever the low battery LED indicates.

## Technical Information

### SPECIFICATIONS

- Range: Up to 200m (650 feet) range (LOS)
- Frequency: 433.92, 868.65, 915 MHz
- Battery Type: CR2430, 3V lithium, 280 mA
- Power Output: 868.65MHz: 10 mW
- Typical Battery Life: 4 years
- Low Battery Threshold: 2.5V
- Quiescent Current Consumption: 4  $\mu$ A
- Maximum Current Consumption: 30 mA
- Dimensions: (H x W x D)
- Operating temperature: -10 C to 55 C (14 F to 131 F)
- Average Relative Humidity: 75%
- Weight: 20 gram (0.7 oz.)
- Standard Compliance: EN 50131-1, EN 50131-6 Type C and EN50131-3 Grade 2 Environmental Class II, Type A ACE

## Documents / Resources

	<p><a href="#">RISC GROUP RW332KF1 Panda 4-Button 2-Way Keyfob</a> [pdf] User Guide RW332KF1 Panda 4-Button 2-Way Keyfob, RW332KF1, Panda 4-Button 2-Way Keyfob</p>
---	---

## References

- [CNPP, votre expert en prévention et en maîtrise des risques - CNPP](#)
- [riscogroup.com](#)