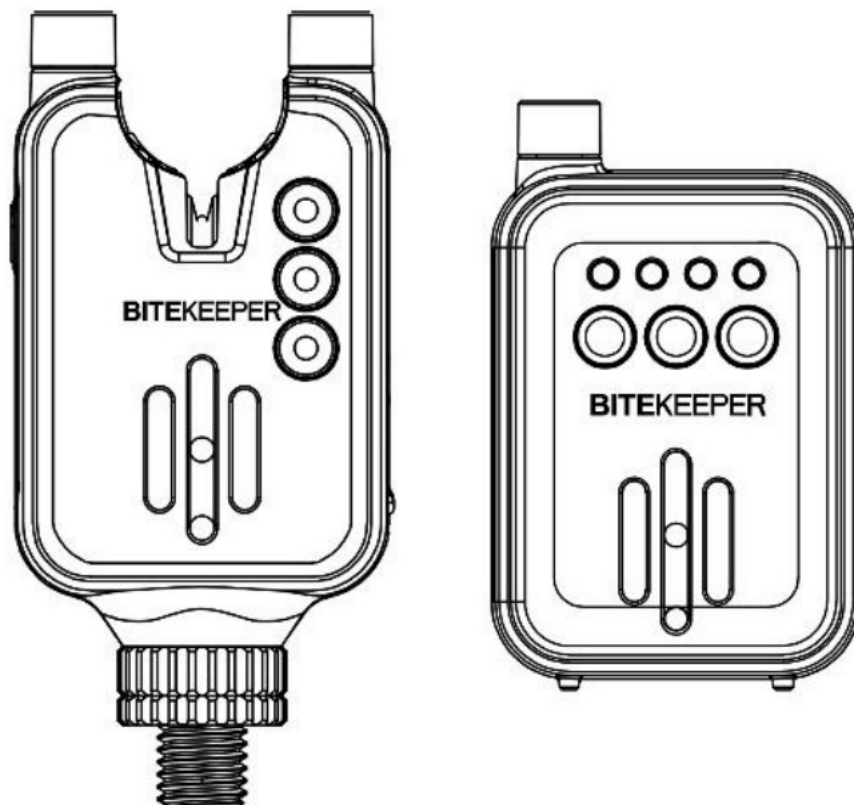




## RIPPTON BiteKeeper Smart Bite Alarm Set User Manual

[Home](#) » [RIPPTON](#) » RIPPTON BiteKeeper Smart Bite Alarm Set User Manual 



User Manual

**Note:** The pictures below are only for illustration purpose, the actual product may vary slightly due to improvements.



USER MANUAL  
BITEKEEPER ALARM (Multi Color LED)

Battery type:	250mA Li-polymer
Nominal voltage:	3.7V
Standby current:	510uA
Peak working current:	100mA
Radio transmitter operating frequency:	433MHz
Wireless transmission modulation code:	FM
Max volume:	120dB
Effective wireless distance:	100m (can be affected by the environment)
Max volume:	Conformal coating
Effective wireless distance:	IP66



**BITEKEEPER Alarm**

**Contents**

- [1 HOW TO USE](#)
- [2 Warranty](#)
- [3 Documents / Resources](#)
  - [3.1 References](#)
- [4 Related Posts](#)

**HOW TO USE**

- **Turning On Alarm:**

Press and hold the Power button located on the left side (refer to the picture above) for one second. You will see both LEDs flash once, and hear two loud beeps. This indicates that the alarm is on.

- **Adjusting Volume**

To adjust the volume, briefly press the V button to cycle through the 7 different volume levels, from quietest to loudest. Once you reach the desired volume level, stop pressing the button. Your volume is now successfully set.

- **Tone Adjustment**

Briefly press the T button to cycle through the 7 different tones in diatonic scale: Do, Re, Mi, Fa, Sol, La, Si. Once you hear the desired tone, stop pressing the button. Your tone is now successfully set.

- **Adjusting Sensitivity**

To adjust the sensitivity, briefly press the S button. Each press will emit a beep, and there are seven different sensitivity settings. One beep indicates the lowest sensitivity setting, and seven beeps indicate the highest.

- **Standby Mode**

The alarm will enter standby mode (low power consumption mode) after 10 seconds of inactivity. When the bite occurs, the alarm will be reactivated automatically.

- **Change LED Color**

While the alarm is on, press and hold the S button to cycle through the multi-color run LED color options – the color will periodically change to blue, red, green and yellow in turn, and you will hear a beep when the color changes. Once the color you like shows, release the button, the run LED will remain on in the color for around 10 seconds before going off. Now the run LED color is set successfully.

- **Attaching To Rod**

This alarm is designed to be attached directly to your rod.

- **Drop-back Function**

When a drop-back bite occurs, the relevant LED will twinkle, and the alarm will emit a continuous low sound. The LED color will remain white for around ten seconds after the alarm stops sounding.

- **Memory Function**

All settings you have made on last use will automatically be saved and apply to next use, regardless of whether you switch the device off or not.

- **Turning Off the Alarm**

To turn off the alarm, press and hold the Power button located on the left side (refer to the picture above) for one second. You will see both LEDs flash once, and hear one low beep. This indicates that the alarm is turned off.

- **Charging**

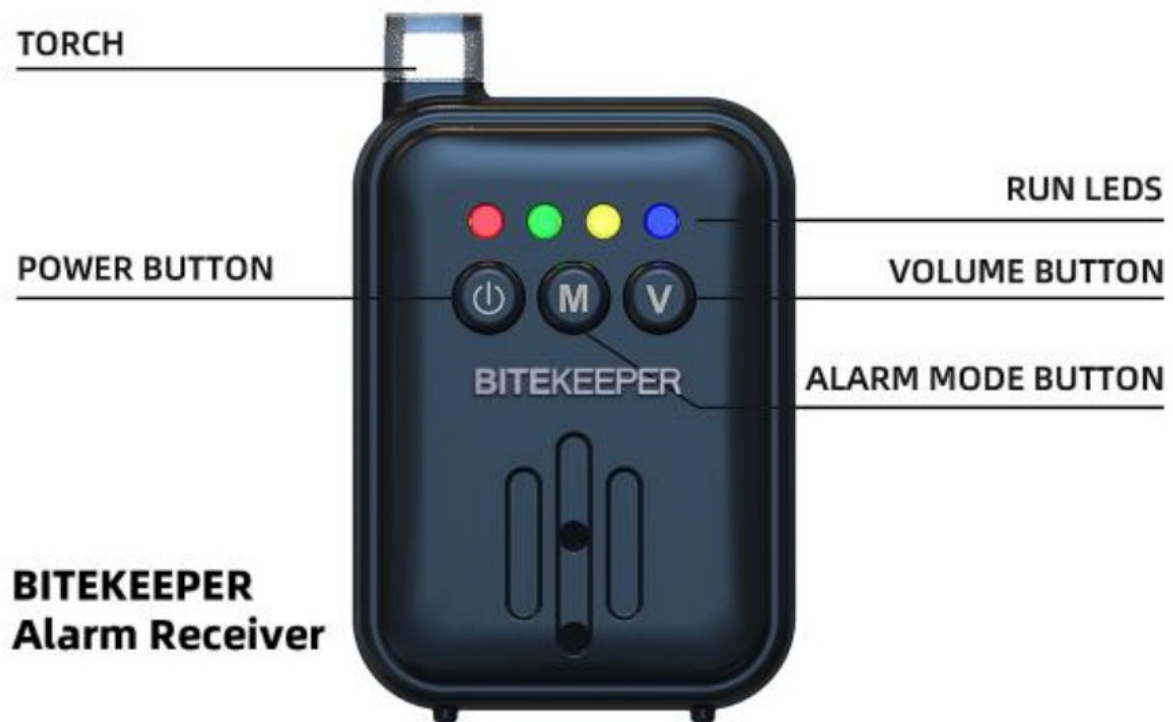
Before charging, turn off the alarm. Attach the magnetic charging cable to the charging port located on the lower back of the alarm. You will hear two short beeps, and the multi-color run LED will come on and then its brightness will periodically dim and brighten. Once the alarm is fully charged, the run LED will turn green.

**Kind Reminder:**

Only the paired transmitter can activate and receive responses from each receiver.

**USER MANUAL****BITEKEEPER ALARM RECEIVER (Multi Color LED)**

Battery type:	250mA Li-polymer
Nominal voltage:	3.7V
Standby current:	600uA
Peak working current:	100mA
Radio transmitter operating frequency:	433MHz
Wireless transmission modulation code:	FM
Max volume:	120dB
Effective wireless distance:	100m (can be affected by the environment)
Circuit board sealing:	Conformal coating
IP rating:	IP66



## HOW TO USE

- Turning On Receiver:

To turn on the receiver, press and hold the Power button. The torch and run LEDs will flash once in sequence, and two loud beeps will sound.

- Adjusting Volume

To adjust the volume, briefly press the V button. The volume can be set to one of seven levels, from quietest to loudest.

- Choosing Alarm Mode

To choose an alarm mode, press the M button. There are three options: ①. RING MODE – the receiver beeps only; ②. RING&VIBRATION MODE – the receiver beeps and vibrates; or ③. VIBRATION MODE the receiver vibrates only.

- Pairing Receiver With Alarms

BITE KEEPER alarms can be easily paired with BITE KEEPER receiver. To enter pairing mode, make sure both the alarm and receiver are turned on. Then, press and hold the M button and V button on the receiver for 3 seconds. All run LEDs will flash twice and turn off, indicating the pairing mode is on. Next, pull a string through the roller on the alarm. The alarm and the receiver will flash and beep together, indicating that they have been paired. Up to four alarms can be paired with one receiver. To exit pairing mode, briefly press the Power button.

- Canceling Connection To Alarms

① To cancel the connection between the receiver and an alarm, press and hold the M button and V button on the receiver for three seconds. Run LEDs will flash twice and remain on, corresponding to the paired alarms. Then, briefly press the M button to choose a desired LED. The LED will periodically dim and brighten, indicating the canceling mode is on. Finally, press and hold the M button to un-pair the corresponding alarm. Repeat the operations to un-pair more alarms. Or, to quickly cancel all paired alarms, press and hold the V button after entering the canceling mode.

② To exit the canceling mode, briefly press the Power button.

- Turning Off Receiver:

To turn off the receiver, press and hold the Power button. The torch and run LEDs will flash once, and one beep will sound.

- Charging

Before charging, turn off the receiver. Then attach the magnetic charging cable to the charging port on the lower back of the receiver.

You will hear two short beeps, and the first run LED will come on and then periodically dim and brighten. Once the receiver is fully charged, the run LED will turn green.



- APP Connection (Only Available for the bluetooth version BITEKEEPER Pro)

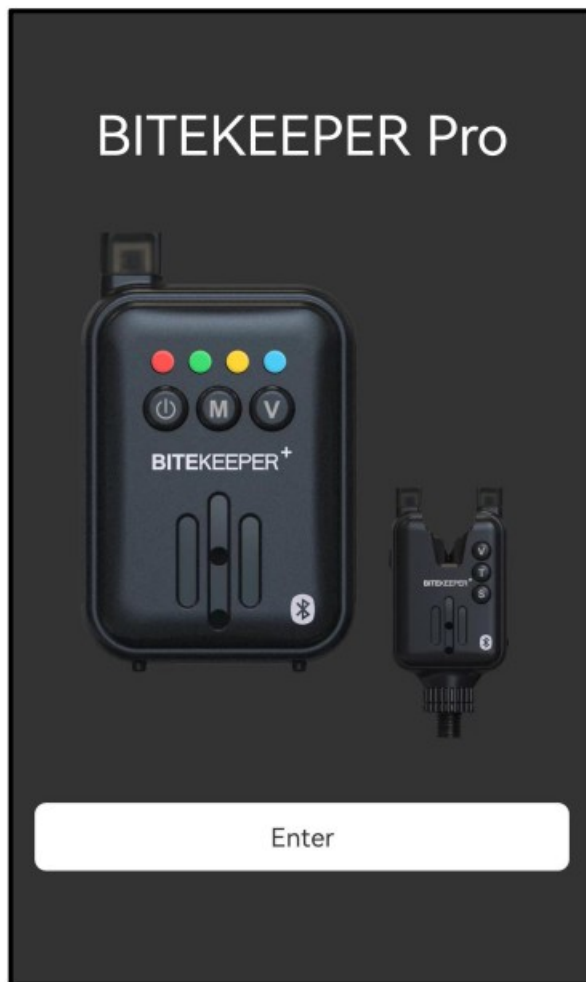
a. Search for either “Bite keeper” or “Ripplon” on the Google Play Store, Samsung Galaxy Apps (android) or App Store (iOS), or scan this QR code below, to install the app on your mobile device. Installing the app requires Android System 8.0 or above and iOS 9.0 or above.



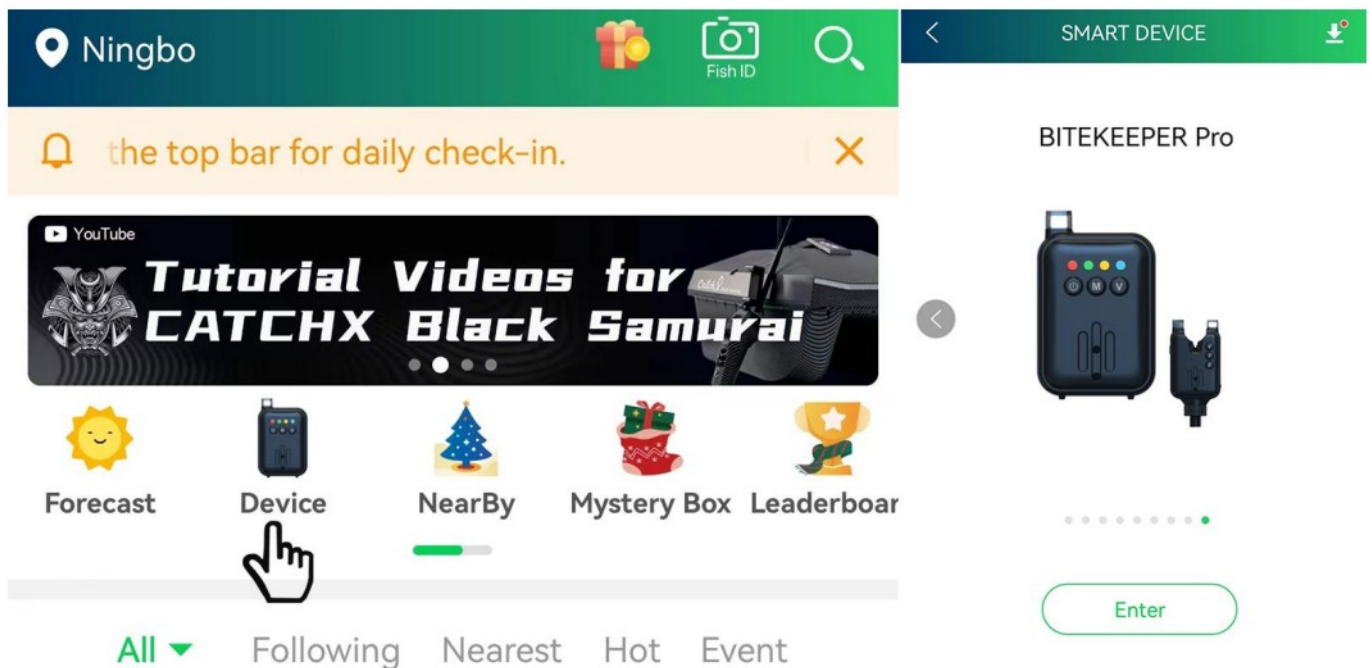
<https://bk.ripplon.com/>

b. Enter “Bite keeper” App on your mobile device, then tap “Enter”



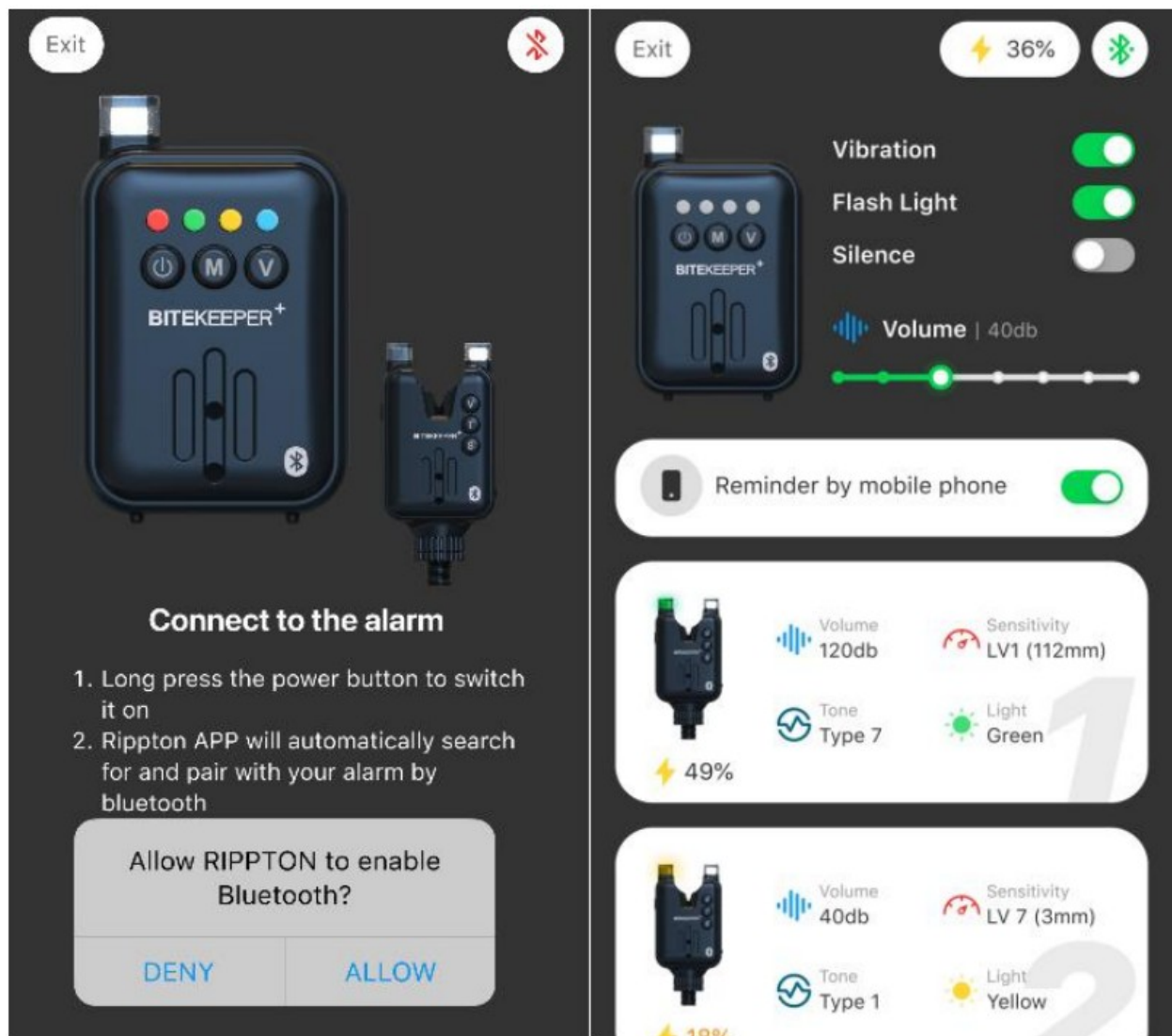


Enter “Rippton” App on your mobile device, then tap “Device” and select the “Bite Keeper” interface among the other products.



c. Please switch on the “Bluetooth” in the settings of your smart mobile device, and allow “Rippton’s access to such bluetooth.  
After powering on the receiver and all the alarms, they would automatically connect to your smart mobile device through the app.  
You are able to adjust the settings of the bite alarm set on the app.





## Warranty

Notice: Rippton reserves the right to amend and/or interpret all the contents provided in this manual.

We offer you a 24-month guarantee from the date of purchase.

The guarantee covers any defects arising from the drive unit and the electrical and electronic parts of the alarm set, faulty material or workmanship.

It does not cover batteries, damage arising from improper use, breakage, or normal wear of the alarm set or associated equipment.

The guarantee is invalidated if repairs or modifications are undertaken by unauthorized persons.

The guarantee period for the rechargeable battery and the rechargeable LI-ION batteries is 6 months from the date of purchase.

We are committed to providing you with the best possible products and services, but in the unfortunate circumstance that you have a complaint or our app has a bug which needs to be fixed, please get in touch with us by email: [support@rippton.com](mailto:support@rippton.com)



Name: Seamed Accounting Ltd

Address: Electric Avenue Vision 25, London, Enfield EN3 7GD

Contact Person: Billy Han Email [info@seamew.net](mailto:info@seamew.net)

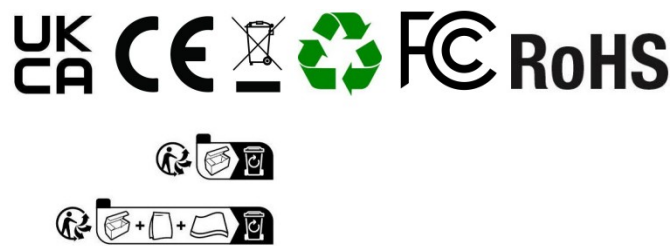
## Manufacturer

Company Name: Ningbo Pelican Smart Fishing Tackle Co., Ltd


Address:16 Yuncheng Road, Xiangtan County, Ningbo, Zhejiang Province, China, 315000  
Made in China

Importer

Company Name: Ningbo Smart Fish Network Technology Co., Ltd  
Address: Room 1101, Building E, 655 Sushi Road, Jinzhou District, Ningbo, Zhejiang Province, China, 315000



Documents / Resources

	<p><a href="#">RIPPTON BiteKeeper Smart Bite Alarm Set</a> [pdf] User Manual BiteKeeper, Smart Bite Alarm Set, BiteKeeper Smart Bite Alarm Set</p>
---	--

References

- [Rippton Fishing Drones, Bait Boats, Bite Alarms, Fishing Finders & More | Official Site - Rippton](#)