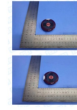



RINGCHAN RC-R10 Wireless Calling System



RINGCHAN RC-R10 Wireless Calling System User Manual

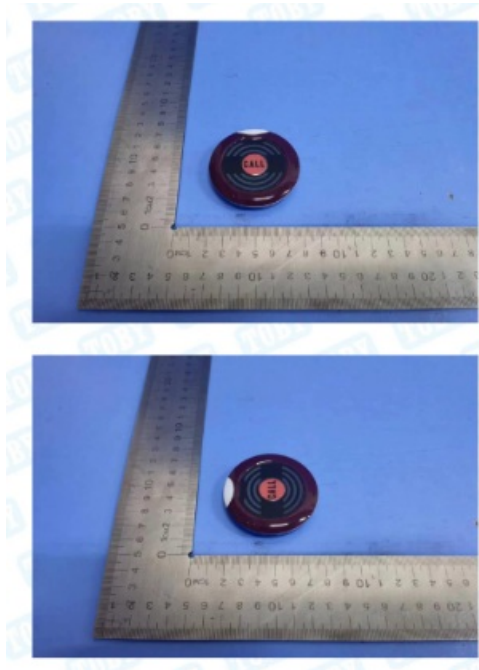
[Home](#) » [RINGCHAN](#) » RINGCHAN RC-R10 Wireless Calling System User Manual 

Contents

- [1 RINGCHAN RC-R10 Wireless Calling System](#)
- [2 Product Usage Instructions](#)
- [3 Call button registering](#)
- [4 Display time setting for the call button numbers](#)
- [5 Prompt music length setting](#)
- [6 FCC Warning](#)
- [7 Documents / Resources](#)
 - [7.1 References](#)
- [8 Related Posts](#)

RINGCHAN

RINGCHAN RC-R10 Wireless Calling System

**Product Specifications:**

- Product Name: Wireless Calling System
- Models: RC-R10, RC-E700
- Compliance: FCC Part 15
- Radiation Exposure: FCC limits for uncontrolled environment
- Minimum Distance: 20cm between radiator and body

Product Usage Instructions**Caution:**

Please keep the wireless calling products away from the following interference sources:

1. Base station of mobile equipments.
2. Refrigerators, air conditioners, and other high-powered electric appliances.
3. Large ultrasonic equipments in hospitals.

Important Information:

Thank you for choosing our Wireless Calling System. Please read the manual before use to ensure proper setup and operation.

FCC Warning:

This device complies with part 15 of the FCC rules. Operation is subject to the following conditions:

1. The device must not cause harmful interference.
2. The device must accept any interference received, including interference that may cause undesired operation.

Any changes or modifications not approved by the responsible party could void the user's authority to operate the equipment.

Radiation Exposure Statement:

This equipment complies with FCC radiation exposure limits for an uncontrolled environment. To ensure safety, maintain a minimum distance of 20cm between the radiator and your body during operation.

Frequently Asked Questions (FAQ):

- **Q: How do I pair the Wireless Calling System with the receivers?**

A: To pair the system with receivers, follow the instructions provided in the user manual. Typically, it involves setting up the base station and syncing it with the receivers.

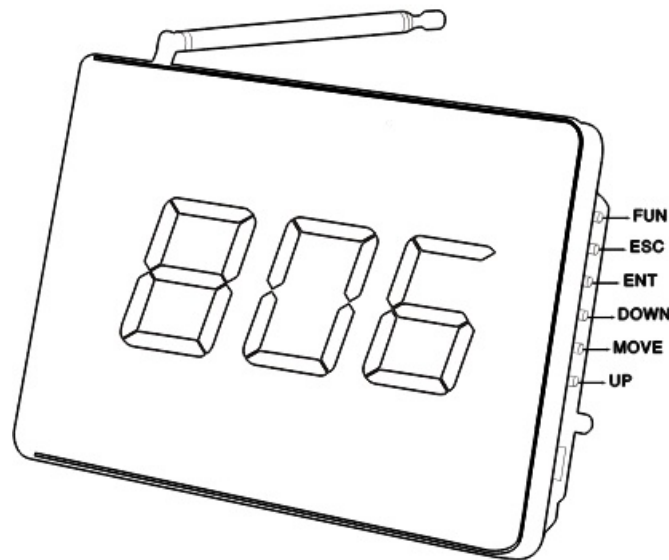
- **Q: What should I do if I encounter interference issues?**

A: If you experience interference, try moving the system away from sources listed in the cautions section. Ensure there are no obstructions blocking signals between the base station and receivers.

User manual

Applied for: RC-R10, RC-E700

Thank you for choosing our products Please do read the manual before use



Please initialization before first registration
Deleting registered number or initializing the receiver

1. Standby mode, press key (FUN) 3 seconds till [F1] appears on the screen.
2. Use key (UP) to choose [F6].
3. Press key (ENT), the registered minimum number appears.
4. Use key (UP), (MOVE), or (DOWN) to choose the number to be deleted.
5. Press key (ENT), the selected number flashed and deleted. The next registered number appears on the screen.
Keep pressing key (ENT), ' — ' appears on the screen, then [00], [000] appears, the initializing is completed.
6. Press key (ESC) and [F6] appears again.
7. Press key (ESC) once more, back to standby mode, the number deleting is completed.

Call button registering

1. Standby mode, keep pressing key (FUN) 3 seconds till [F1] appears on the screen.

2. Press key (ENT), the biggest registered number ([xx.], [xxx.]) appears on screen ,if there is no registered number, then [01] or [001] appears.
3. Press (UP),(MOVE),(DOWN) to choose the registered number wanted, the radix point behind the chosen number lights means the number has been registered and can not register again. Press key (ENT) to delete this number (after deleting, the radix point is not light), then you can register the number again.
4. Press the call button to be registered, the number flashes on screen with music prompt, adding 1 automatically and then stops.
5. Press key (ESC) and [F1] appears.
6. Press key (ESC) again, back to standby mode. The registration is finished.
7. Repeat step3)-4)to register all the call buttons you need, and then press key (ESC) twice, back to standby mode. Registration finished.

Prompt music setting

1. Standby mode, press key (FUN) 3 seconds till [F1] appears on the screen.
2. Use key (UP) to choose [F2].
3. Press key (ENT) and (00) appears.
4. Use the key (UP), (DOWN) to choose prompt music. 01 means the music 'Dingdong' , 02 means 'alarming sound' and 00 means 'voice report' .
5. Press key (ENT), and [F2] appears.
6. Press key (ESC) and back to standby mode. Prompt setting is done.

Display time setting for the call button numbers

1. Standby mode, press key (FUN) 3 seconds till [F1] appears on the screen.
2. Use key (UP) to choose [F3].
3. Press key (ENT), and [20] appears on the screen.
4. Use key (UP),(DOWN) to choose the display time wanted.(00)means unlimited display, the figure of 01-99 means the corresponding display time from 1-99 seconds.
5. Press key (ENT), and [F3] appears.
6. Press key (ESC) and back to standby mode. The setting is done.

Prompt music length setting

1. Standby mode, press key (FUN) 3 seconds and [F1] appears on the screen.
2. Use key (UP) to choose [F4].
3. Press key (ENT), and [01] appears on the screen.
4. Use key (UP),(DOWN) to choose the prompt music length and voice report times wanted, number 01-15 means 15 kinds of the length, one figure means the prompt length is 2 seconds, then 15 means the prompt length is 30 seconds. 01-15 also means the frequency of voice report is 01-15 times.
5. Press key (ENT), and [F4] appears.
6. Press key (ESC) and back to standby mode. The setting is done.

Number display mode setting (not suitable for receiver SC- RIO)

1. Standby mode, press key (FUN) 3 seconds till [F1] appears on the screen.
2. Use key (UP) to choose [F5].
3. Press key (ENT) and [01] appears.
4. Use key (UP), (MOVE) or (DOWN) to choose a number. 01 -10 is all-digital display(default setting),and 11 – 20 is digits beginning with an English letter(the letters are ABCDEFHPLJ).
5. Press key (ENT), and [F5] appears.
6. Press key (ESC), back to standby mode. The setting is done.

Cautions:

1. Please keep the wireless calling products away from below interference sources.

1. Base station of mobile equipments.
2. Refrigerators air conditioners and other high-powered electric appliances.
3. Large ultrasonic equipments in hospitals.

2. Installation notes.

1. Electrify the adapter first (no wet hands) and connect with the receiver after power light on. Then, turn on the receiver.
2. Once there is any abnormality, please deal with it under the correct guidance of factory professionals, otherwise the consequences should be born by customers.
3. Please use the original power adapter, otherwise, the product performance will be seriously affected, the consequences of which need to be born by the customer.
4. The call buttons need to be registered to the receiver before use. Keep the call buttons 30cm at least from the receiver and make sure no one else presses the call buttons during the registration. It is normal if one or two call buttons can not be registered successfully when many call buttons are registered at a time. Register the failed ones again. Check the receiving distance before fixing the registered call buttons.
5. Draw out the antenna of the registered receiver before use.
6. Please adjust the frequency of the walkle-talkle out of the range 433.92 10MHZ to avoid disturbance if the wireless calling system and the walkle talkle are using in the same place.
7. Call buttons shouldn't be fixed on the metal base directly.
8. Stick the call buttons on smooth surface to avoid drop. Rough surface (such as wallpaper) is not preferred.
9. Please keep dry and avoid circuit oxidation.
10. The weather influence the receiving distance.

FCC Warning

This device complies with part 15 of the FCC rules. Operation is subject to the following two conditions:

1. This device may not cause harmful interference, and
2. This device must accept any interference received, including interference that may cause undesired operation.

Changes or modifications not expressly approved by the party responsible for compliance could void the user's authority to operate the equipment.

NOTE: This equipment has been tested and found to comply with the limits for a Class B digital device, pursuant to part 15 of the FCC Rules. These limits are designed to provide reasonable protection against harmful

interference in a residential installation. This equipment generates uses and can radiate radio frequency energy and, if not installed and used in accordance with the instructions, may cause harmful interference to radio communications. However, there is no guarantee that interference will not occur in a particular installation.

- If this equipment does cause harmful interference to radio or television reception, which can be determined by turning the equipment off and on, the user is encouraged to try to correct the interference by one or more of the following measures:
 - Reorient or relocate the receiving antenna.
 - Increase the separation between the equipment and receiver.
 - Connect the equipment into an outlet on a circuit different from that to which the receiver is connected.
 - Consult the dealer or an experienced radio/TV technician for help.

Radiation Exposure Statement

This equipment complies with FCC radiation exposure limits set forth for an uncontrolled environment. This equipment should be installed and operated with minimum distance 20cm between the radiator and your body.

Documents / Resources



[RINGCHAN RC-R10 Wireless Calling System](#) [pdf] User Manual
RC-R10 Wireless Calling System, RC-R10, Wireless Calling System, Calling System, System

References

- [User Manual](#)

[Manuals+](#), [Privacy Policy](#)

This website is an independent publication and is neither affiliated with nor endorsed by any of the trademark owners. The "Bluetooth®" word mark and logos are registered trademarks owned by Bluetooth SIG, Inc. The "Wi-Fi®" word mark and logos are registered trademarks owned by the Wi-Fi Alliance. Any use of these marks on this website does not imply any affiliation with or endorsement.