



RING RTC600 Digital Tyre Inflator with Auto Stop and LED Light User Manual

[Home](#) » [Ring](#) » RING RTC600 Digital Tyre Inflator with Auto Stop and LED Light User Manual 

Contents

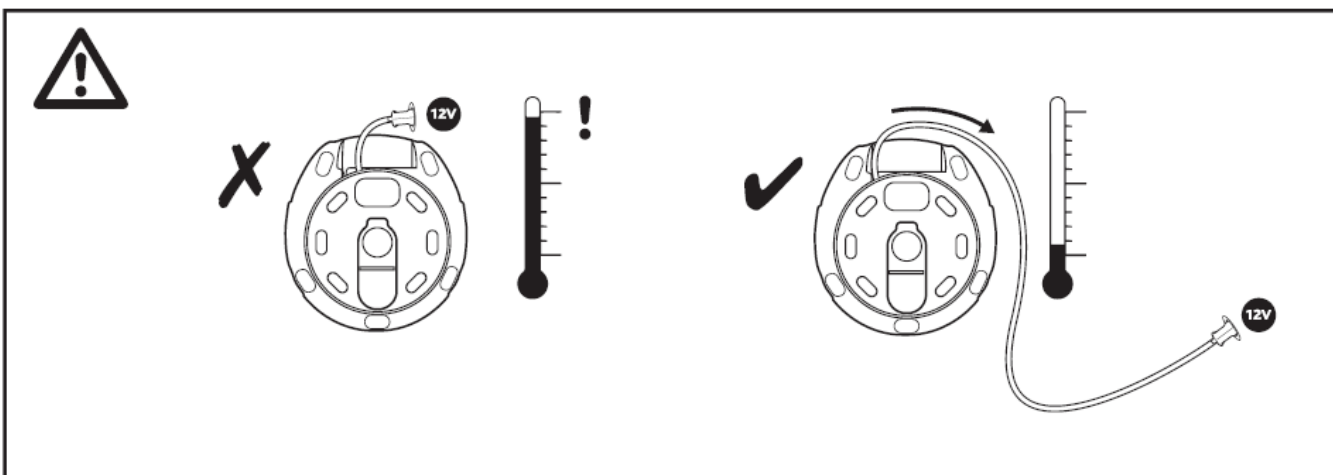
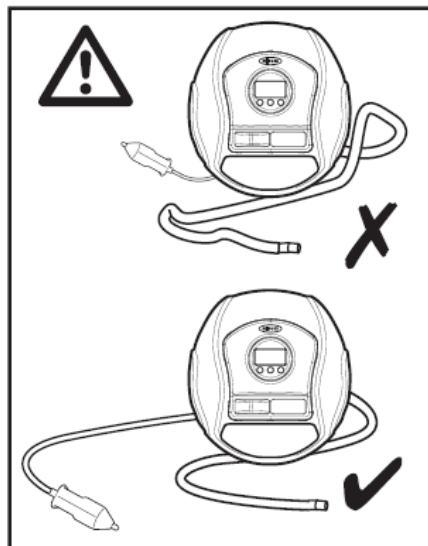
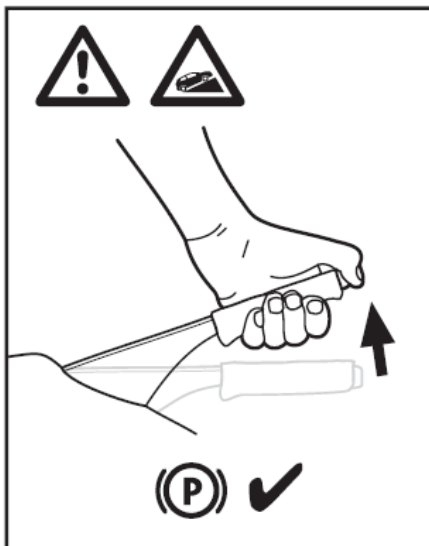
- [1 RING RTC600 Digital Tyre Inflator with Auto Stop and LED Light](#)
- [2 Introduction](#)
- [3 Control layout](#)
- [4 Operation](#)
- [5 Inflatable and Leisure Inflation](#)
- [6 Specifications](#)
- [7 Documents / Resources](#)
 - [7.1 References](#)
- [8 Related Posts](#)



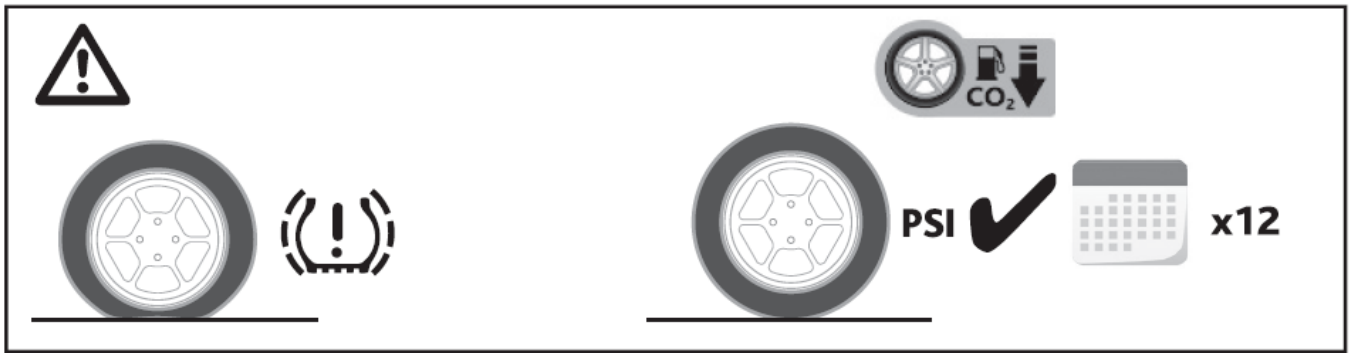
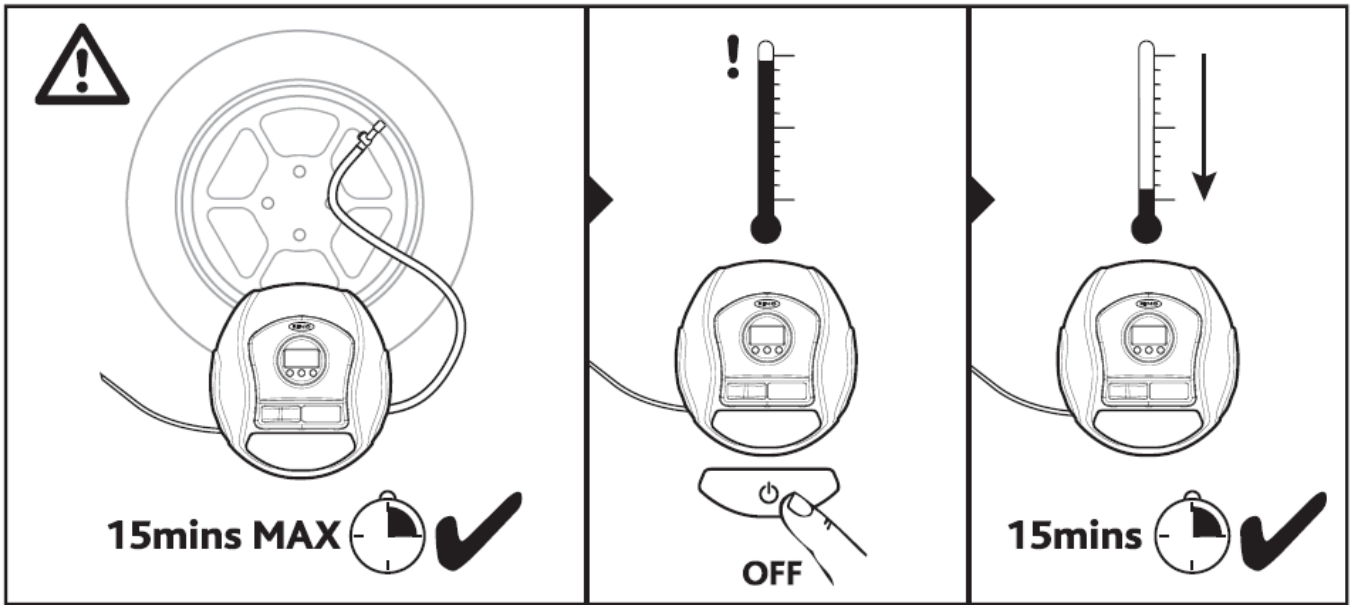
RING RTC600 Digital Tyre Inflator with Auto Stop and LED Light



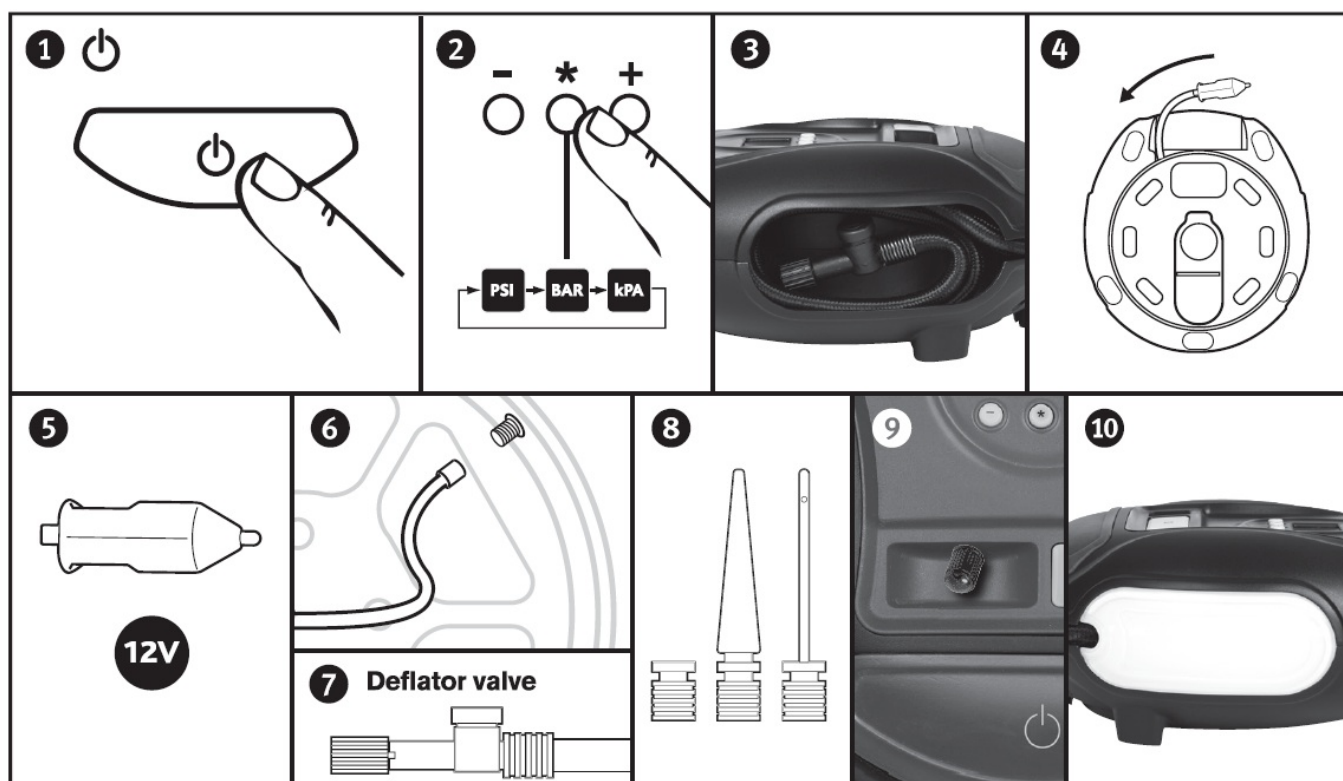
Introduction



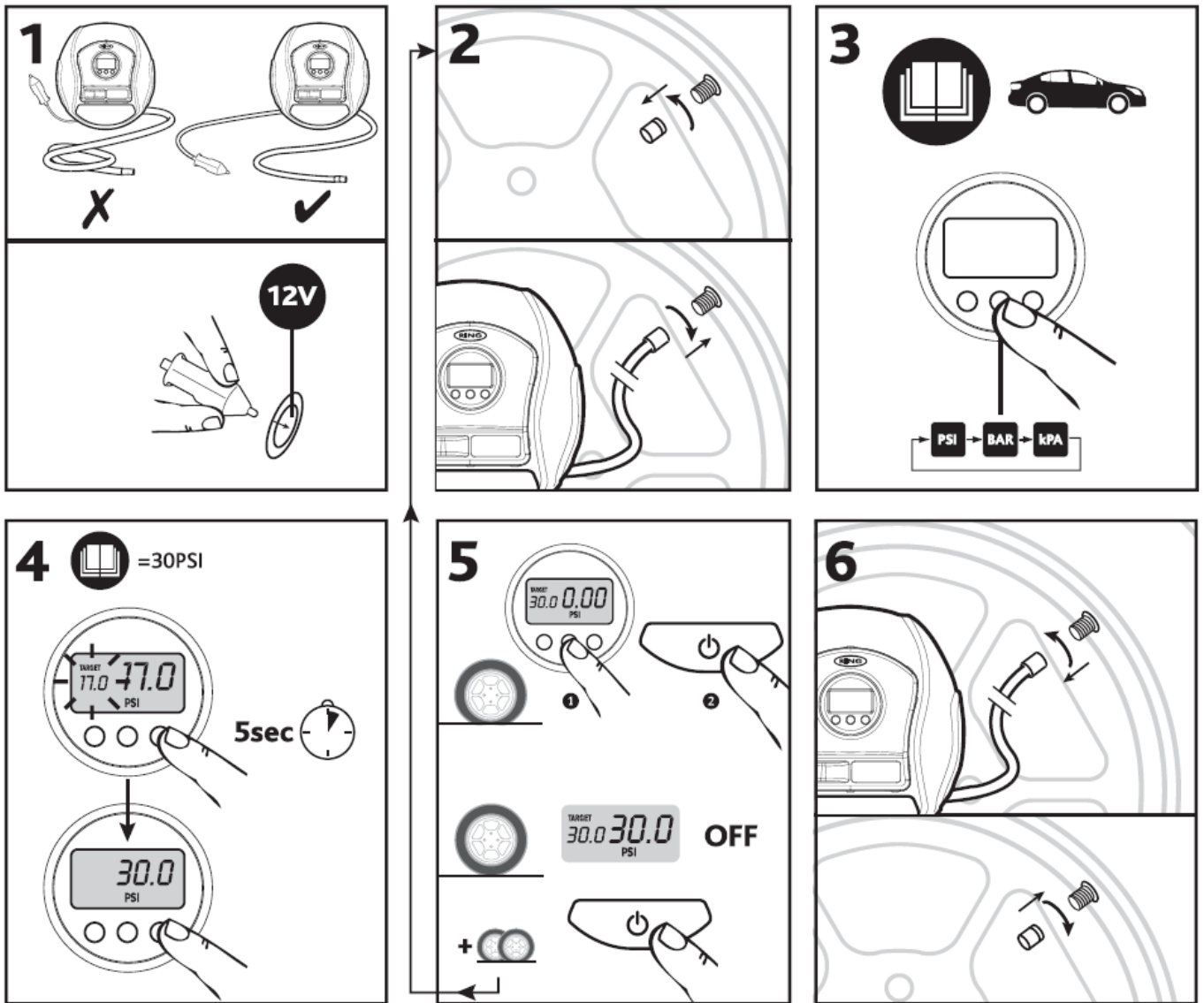
Please ensure to fully unwind the power cable before use to avoid overheating.



Control layout

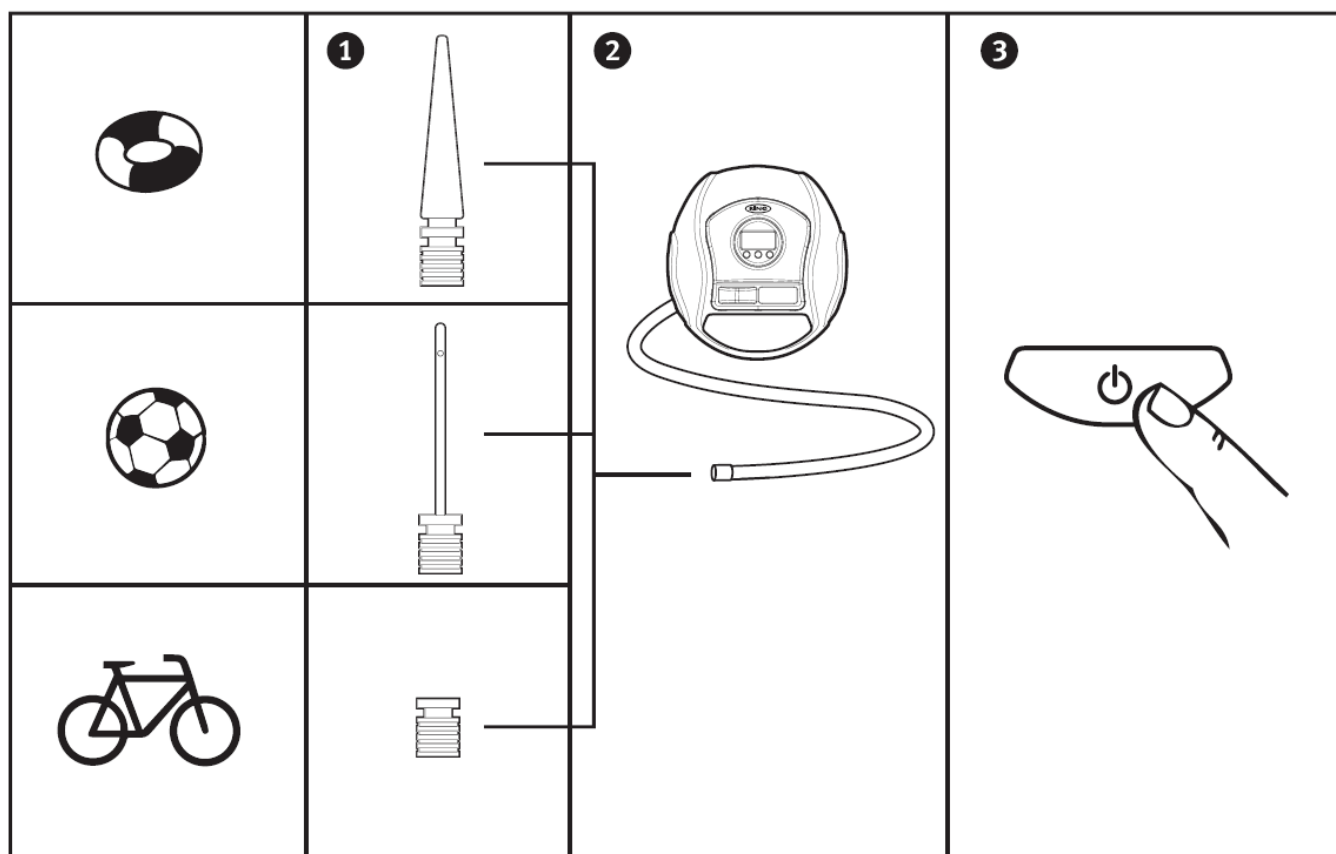






Operation



NOTE: The gauge on this compressor is for guidance only. Check pressure with a known accurate gauge. The compressor can be used without the engine running but this will drain the power from the battery.

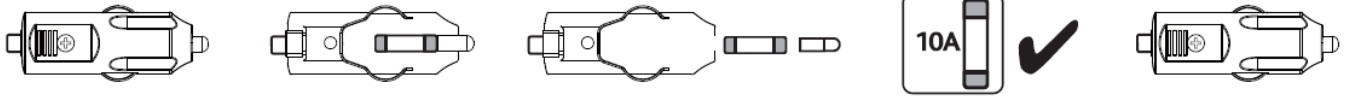
Inflatable and Leisure Inflation



	5-13PSI / 0.34-0.90BAR
	22PSI / 1.52BAR
	35-50PSI / 2.41-3.50BAR
	90-100PSI / 6.20-6.90BAR

Specifications

Power supply: 12VDC
 Max Amperage: 10A
 Pressure measurement range: 0-100PSI / 0-6.9BAR
 Decibel rating: 90dB
 Power cable length: 3.3m
 Air hose length: 65cm
 Operation temperature: -20-c to +60-c



OSRAM GmbH
Nonnendammallee 44
13629 Berlin, Germany
www.osram.com
Email automotive-service@osram.com

Documents / Resources

	<p>RING RTC600 Digital Tyre Inflator with Auto Stop and LED Light [pdf] User Manual RTC600 Digital Tyre Inflator with Auto Stop and LED Light, RTC600, Digital Tyre Inflator with Au to Stop and LED Light, LED Light, Light</p>
--	--

References

- [OSRAM Americas | OSRAM SYLVANIA Homepage](#)