



## **RING RTC450 Digital Tyre Inflator with Auto Stop Memory LED Light Instruction Manual**

[Home](#) » [Ring](#) » **RING RTC450 Digital Tyre Inflator with Auto Stop Memory LED Light Instruction Manual** 

**RING RTC450 Digital Tyre Inflator with Auto Stop Memory LED Light**



## Contents

- [1 Introduction](#)
- [2 Explanation of symbols](#)
- [3 Control layout](#)
- [4 Operation](#)
- [5 Inflatable and Leisure Inflation](#)
- [6 Specifications](#)
- [7 Declaration of Conformity](#)
- [8 Customer Support](#)
- [9 Documents / Resources](#)
  - [9.1 References](#)
- [10 Related Posts](#)

## Introduction

### Intended Usage

The intended use for this product is inflation of vehicle tyres and other stated inflatables. It can also be used to deflate the stated inflatables. It is only intended for private use and not suitable for commercial purposes. Use of this product in any way other than described is considered improper and may result in damage to property or persons. The manufacturer or vendor cannot be held liable for damages or injury incurred through improper or incorrect use.

For list of General Power Tool Safety Warnings please scan the QR code or visit: [www.ringautomotive.com/en/product-safety-documents](http://www.ringautomotive.com/en/product-safety-documents)



## Explanation of symbols



Pay attention



Attention



Refer to instructions for information.



File instructions for future reference.



Requires 12V d.c. power.



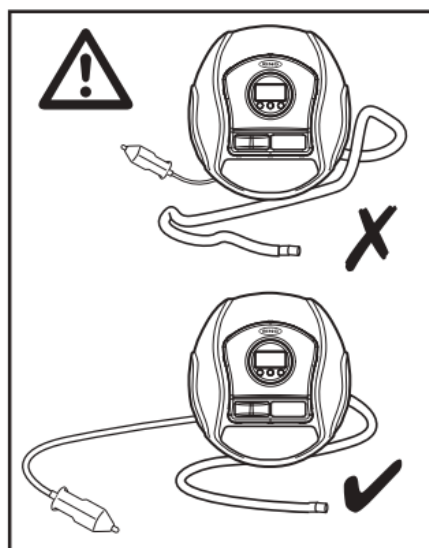
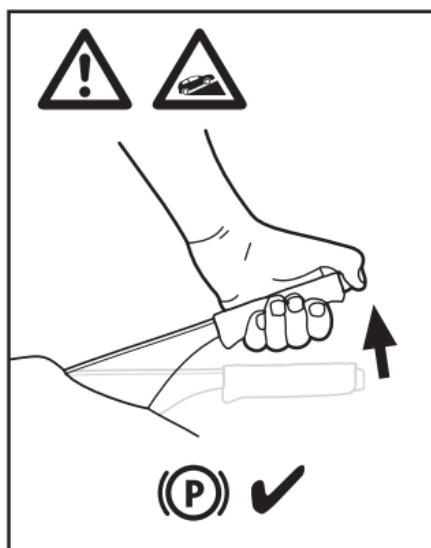
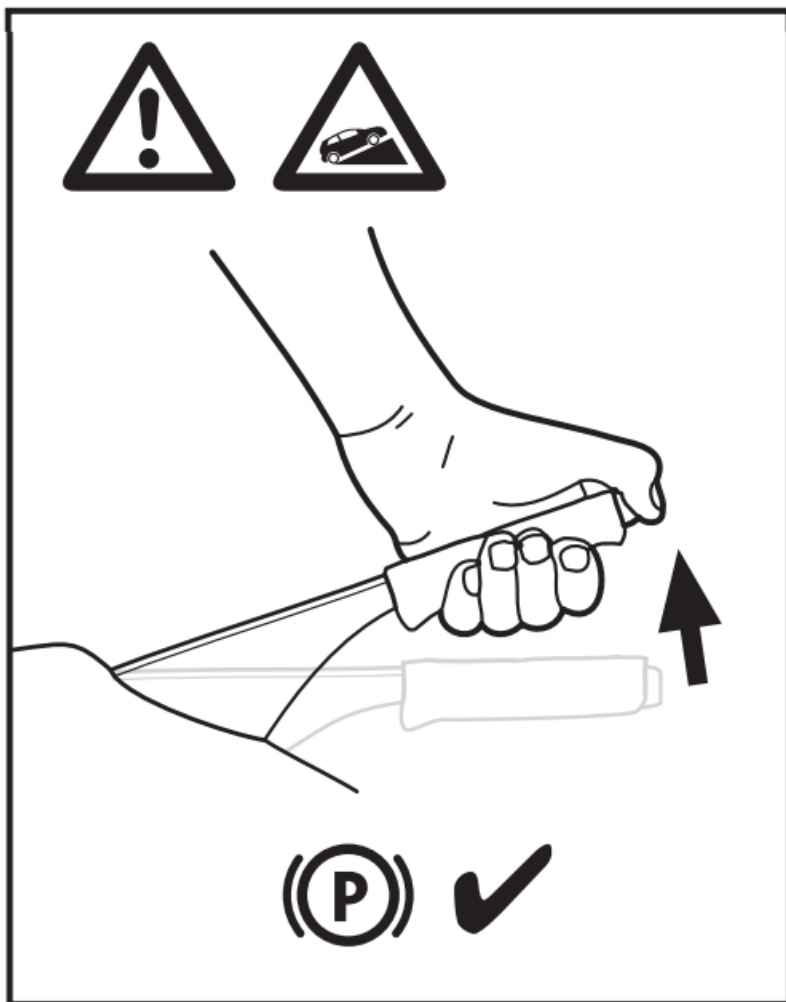
The noise level of the product is 90 dB. Wear hearing protection. The impact of noise can cause damage to hearing.

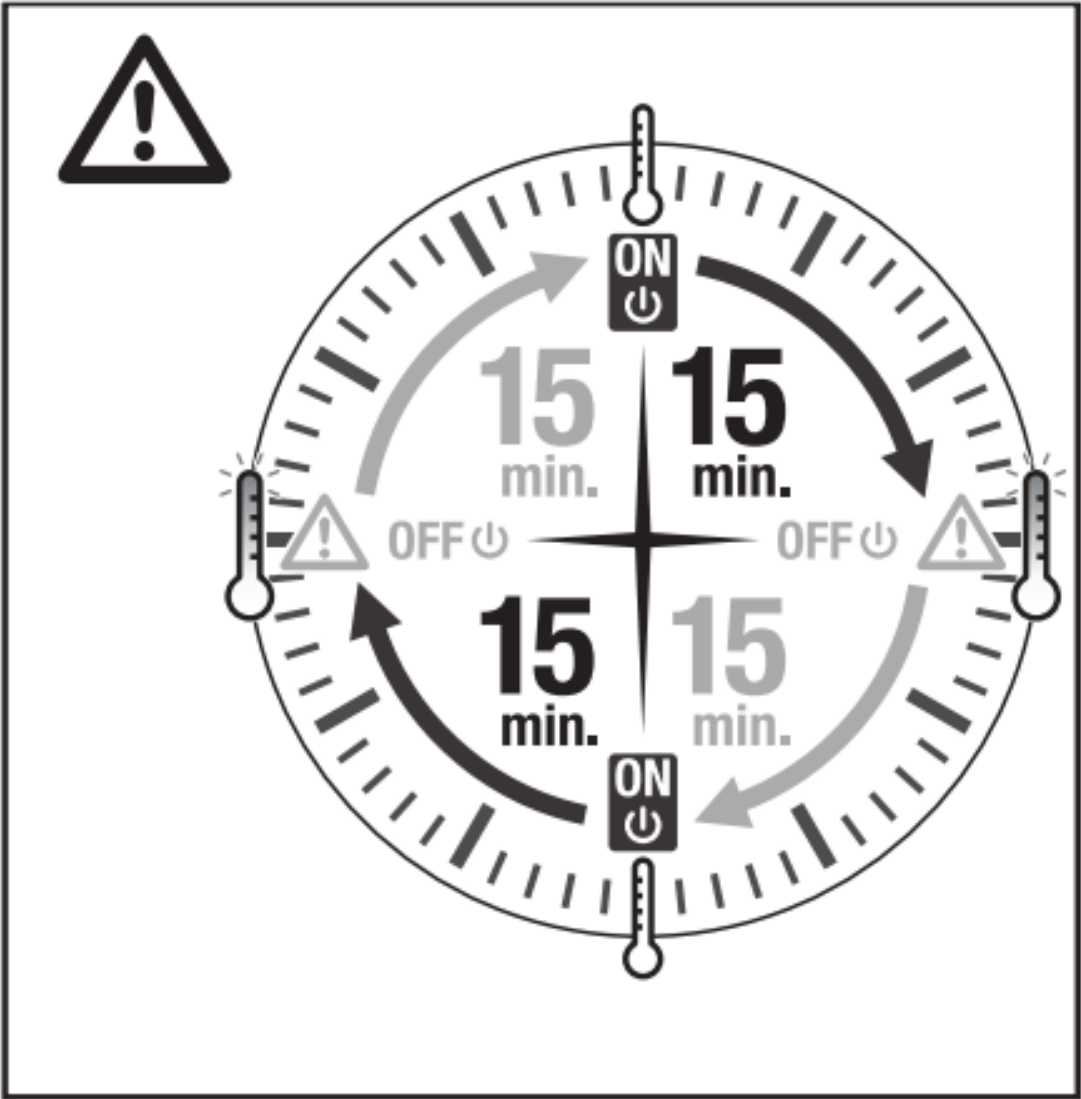
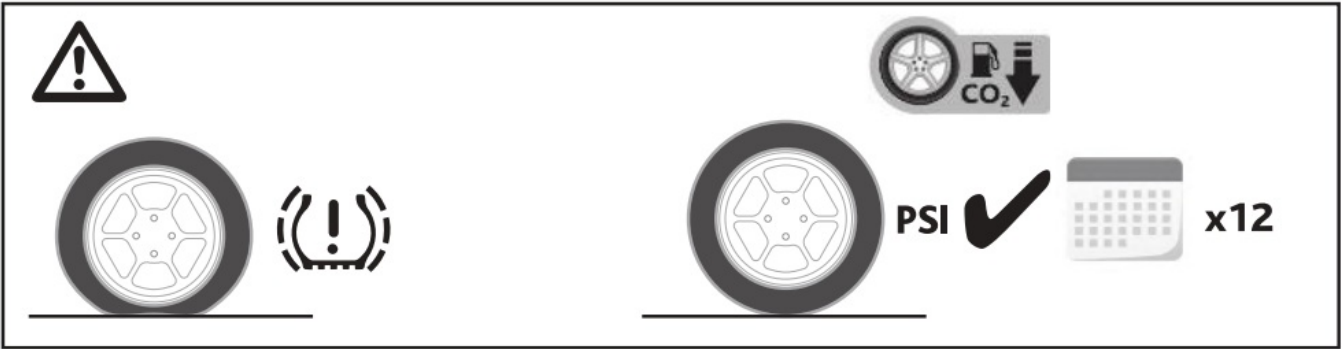
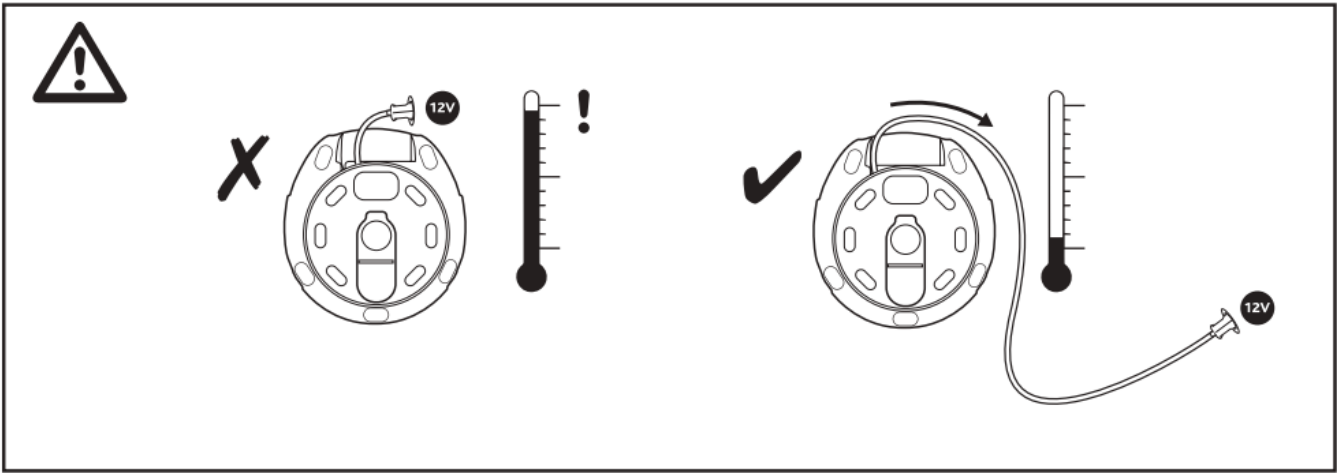


Correctly inflated tyres will reduce fuel consumption and result in lower CO2 emissions.

## Introduction

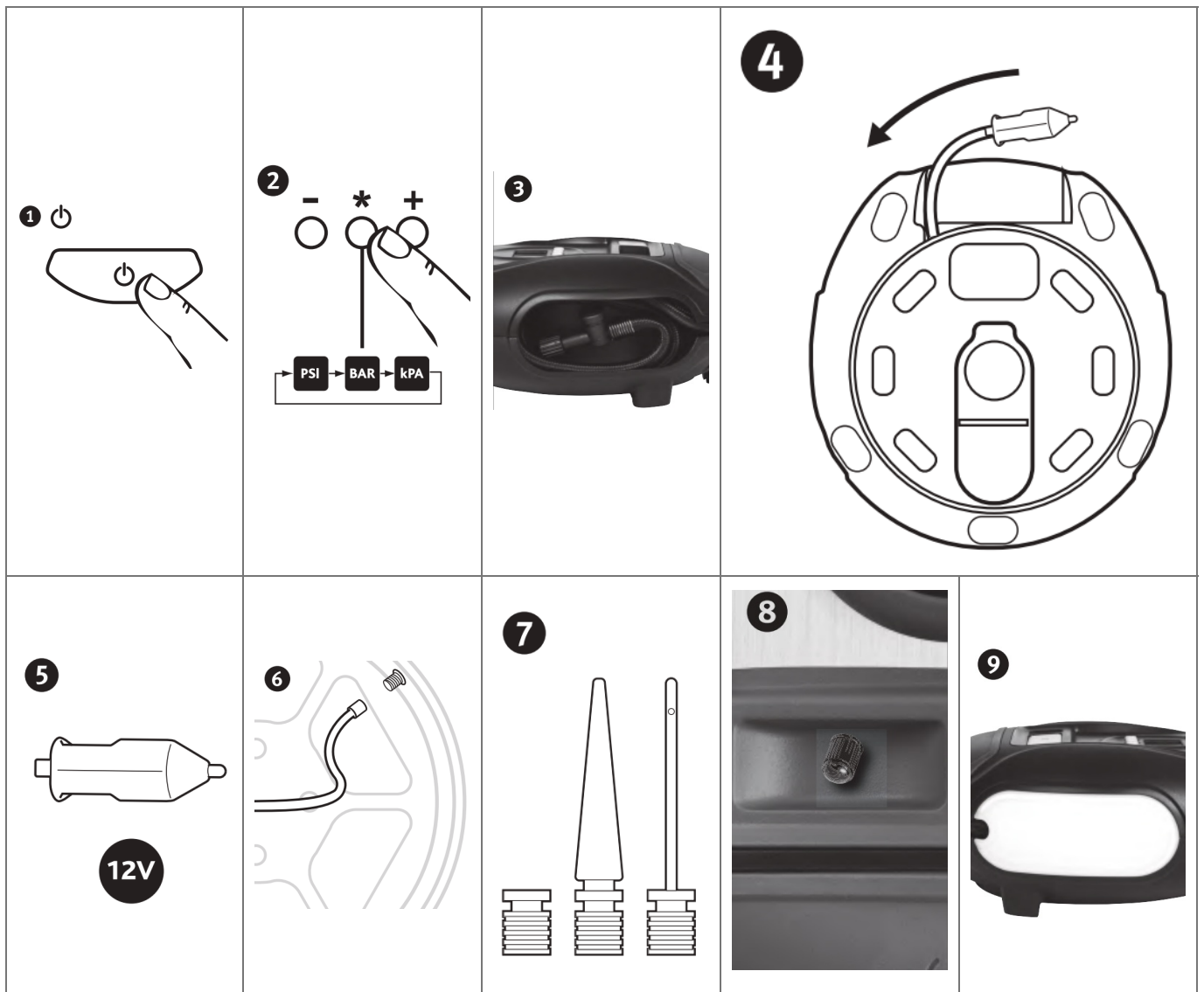
Please ensure to fully unwind the power cable before use to avoid overheating.





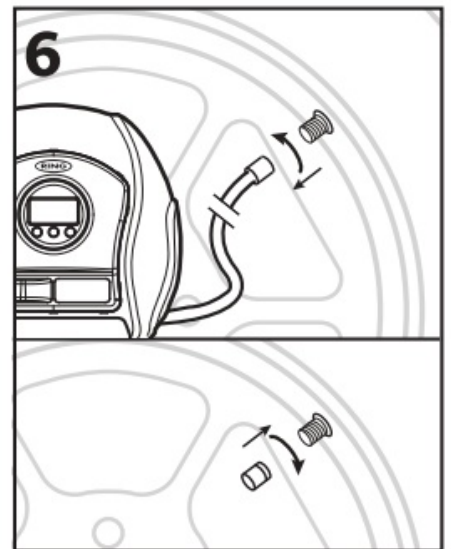
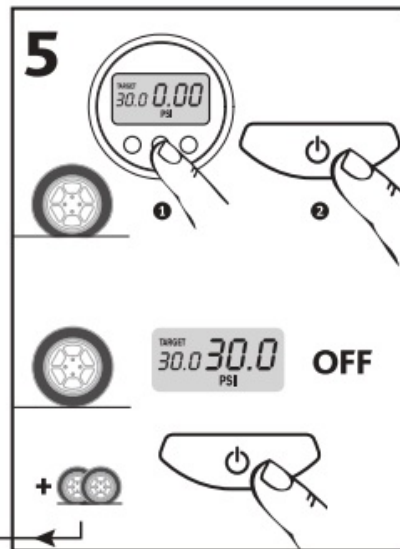
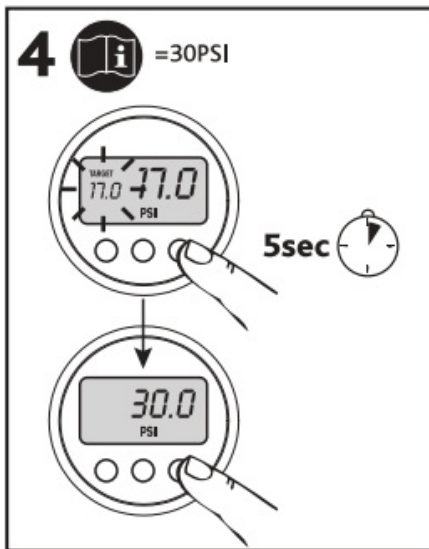
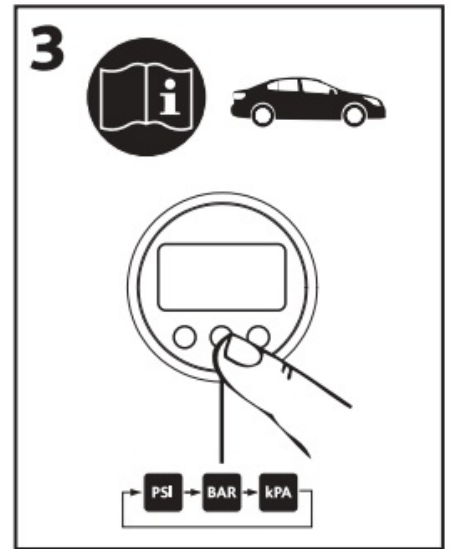
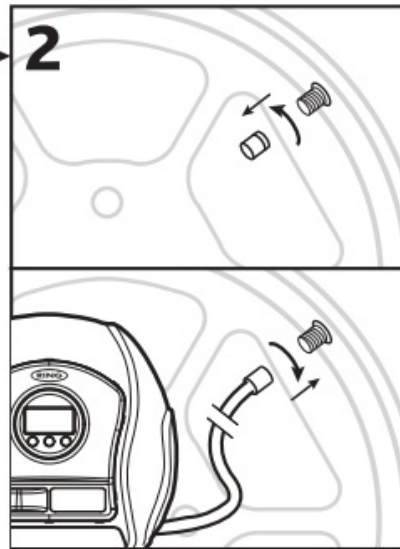
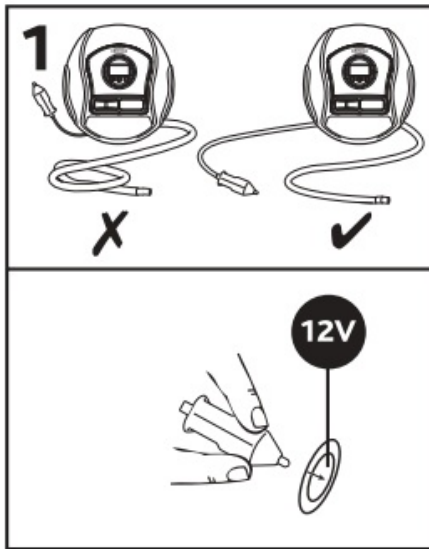
## Control layout





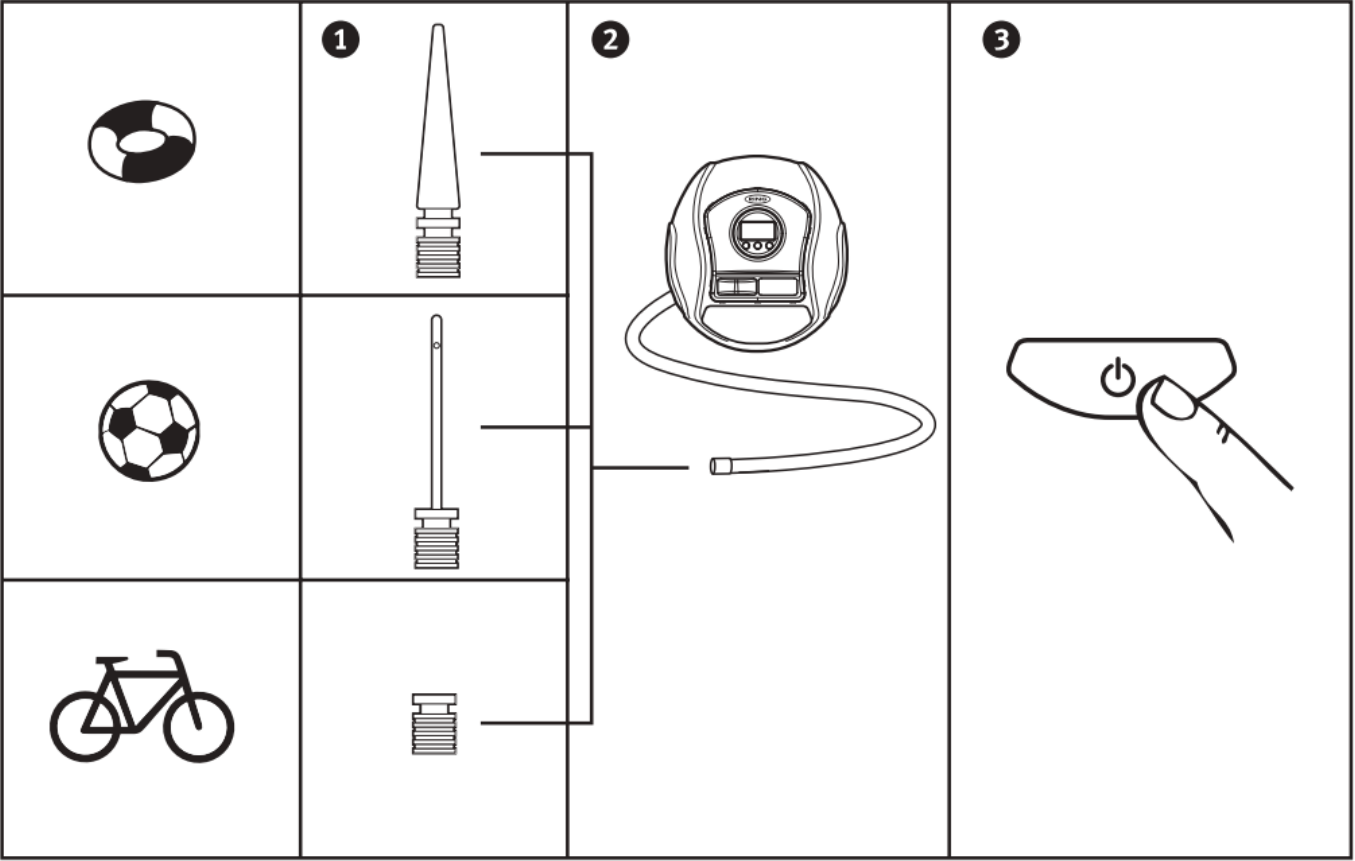
## Operation


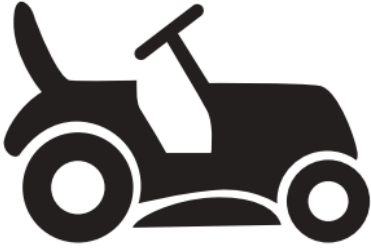


**NOTE:** The gauge on this compressor is for guidance only. Check pressure with a known accurate gauge. The compressor can be used without the engine running but this will drain the power from the battery.



**Inflatable and Leisure Inflation**

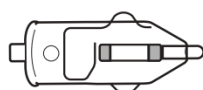
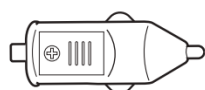




	5-13PSI / 0.34-0.90BAR
	22PSI / 1.52BAR
	35-50PSI / 2.41-3.50BAR
	90-1 00PSI / 6.20-6.90BAR

## Specifications

Power supply	12V d.c.
Max Amperage	10A
Pressure measurement range	0-99 PSI / 0-6.9BAR
Decibel rating	90dB
Product dimensions	L197 x W80 x H180mm
Power cable length	3m
Air hose length	50cm
Operation temperature	-10°C to +50°C



## Declaration of Conformity



The UK Conformity Assessed mark identifies products conforming with the statutory requirements (refer to "Declaration of Conformity")



The EU Conformity Assessed mark identifies products conforming with the statutory requirements (refer to "Declaration of Conformity")

The UKCA / CE declaration of conformity is available on request from [technicalsupport@ringautomotive.com](mailto:technicalsupport@ringautomotive.com)

## Customer Support

**Manufactured by:** Ring Automotive Limited Gelderd Road, Leeds, LS12 6NA United Kingdom

**Telephone** +44 (0) 113 213 2000 . Fax +44 (0) 113 231 0266

**Email** [autosales@ringautomotive.com](mailto:autosales@ringautomotive.com)

[www.ringautomotive.com](http://www.ringautomotive.com)

**Authorised Representative:** OSRAM GmbH Nonnendammallee 44, 13629 Berlin, Germany

**Email:** [automotive-service@osram.com](mailto:automotive-service@osram.com)



UK  
CA CE



## Documents / Resources



[RING RTC450 Digital Tyre Inflator with Auto Stop Memory LED Light](#) [pdf] Instruction Manual

RTC450 Digital Tyre Inflator with Auto Stop Memory LED Light, RTC450, Digital Tyre Inflator with Auto Stop Memory LED Light, Auto Stop Memory LED Light, Memory LED Light, LED Light

## References

- [User Manual](#)

[Manuals+](#). [Privacy Policy](#)

This website is an independent publication and is neither affiliated with nor endorsed by any of the trademark owners. The "Bluetooth®" word mark and logos are registered trademarks owned by Bluetooth SIG, Inc. The "Wi-Fi®" word mark and logos are registered trademarks owned by the Wi-Fi Alliance. Any use of these marks on this website does not imply any affiliation with or endorsement.