



RING RTC4000 Cordless Digital Tyre Inflator Instruction Manual

[Home](#) » [Ring](#) » RING RTC4000 Cordless Digital Tyre Inflator Instruction Manual 

Contents

- [1 RING RTC4000 Cordless Digital Tyre Inflator](#)
- [2 Product Information](#)
- [3 Product Usage Instructions](#)
- [4 OVERVIEW](#)
- [5 FEATURES](#)
- [6 SPECIFICATION](#)
- [7 DIMENSION](#)
- [8 INSTRUCTION OF USE](#)
- [9 Documents / Resources](#)
 - [9.1 References](#)
- [10 Related Posts](#)



RING RTC4000 Cordless Digital Tyre Inflator



Product Information

- Product Name: RTC4000 Cordless Digital Tyre Inflator
- Power Supply: Battery-powered
- Max Amperage: Not specified
- Pressure Measurement Range: Not specified
- Decibel Rating: Not specified
- Product Dimensions: Not specified
- Power Cable Length: Not applicable (cordless)
- Air Hose Length: Not specified
- Operation Temperature: Not specified
- USB Cable Length: 1m

Product Usage Instructions

1. Ensure the product is charged or has fresh batteries installed.
2. Connect the USB cable to the product and plug the other end into a power source for charging (if applicable).
3. Attach the air hose to the tyre valve securely.
4. Turn on the product using the power button.
5. Select the desired pressure measurement unit (PSI, BAR, kPa) if applicable.
6. Set the desired tyre pressure using the control buttons or dial.

7. Press the start button to begin inflating the tyre.
8. Monitor the pressure reading on the digital display.
9. Once the desired pressure is reached, press the stop button to stop inflation.
10. Disconnect the air hose from the tyre valve.
11. Store the product in a safe place.

Please refer to the user manual for additional safety instructions and precautions.

OVERVIEW



FEATURES



Car



Motorcycle



E-Bike



Bicycle



Swim ring



Football



Programmable
Settings



LED Light

SPECIFICATION

Power Supply 2)	12 V d.c.
Max Amperage 3)	15 A
Pressure measurement range 4)	0 -120 PSI / 0-8.3 BAR
Decibel rating 5)	90 dB
Product dimensions 6)	95 x 61x 150 mm
Power cable length 7)	3 m
Air hose length 8)	0.6 m
Operation temperature 9)	-20°C...+60°C
USB cable length	1 m

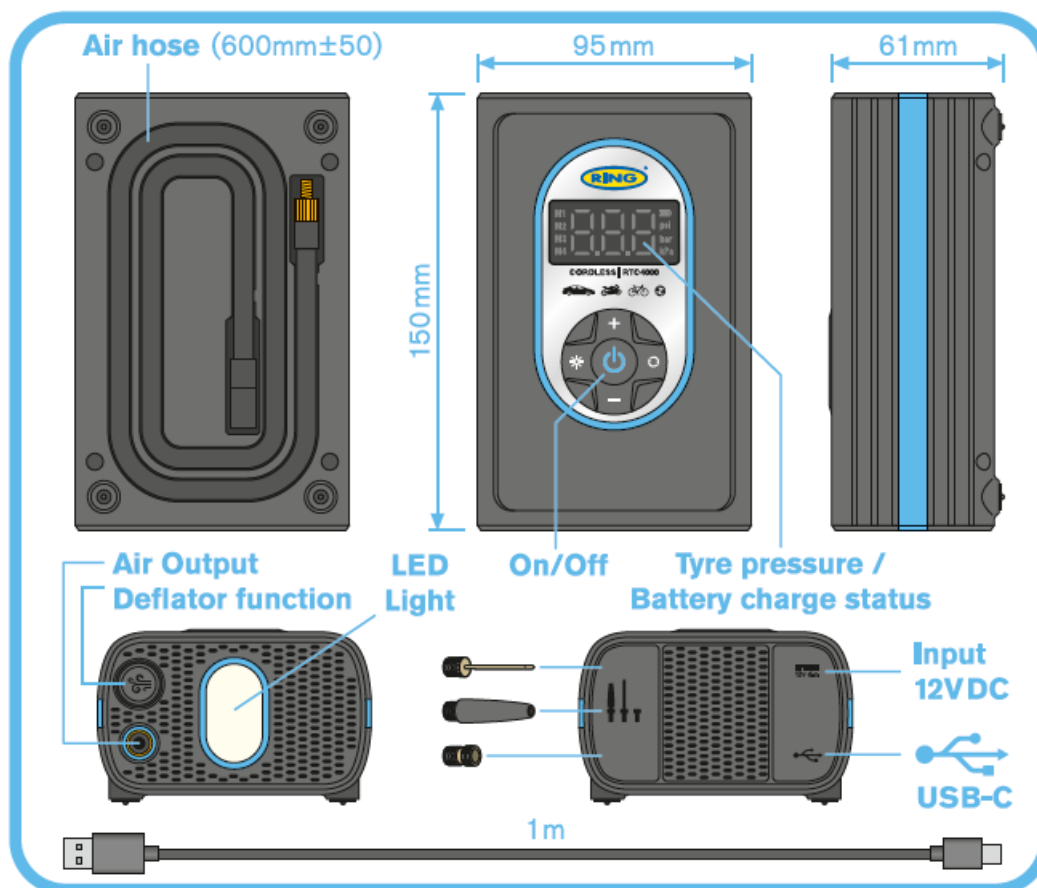
The intended use for this product is inflation of vehicle tyres and other stated inflatables. It can also be used to deflate the stated inflatables.

It is only intended for private use and is not suitable for commercial purposes. Use of this product in any way other than described is considered improper and may result in damage to property or persons.

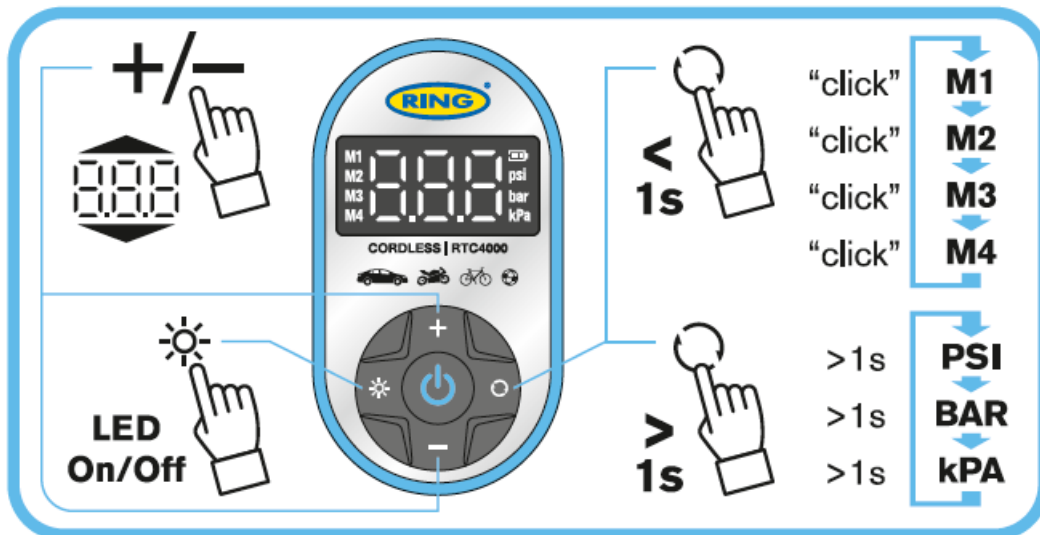
The manufacturer or vendor cannot be held liable for damages or injury incurred through improper or incorrect use. Not for use by children.

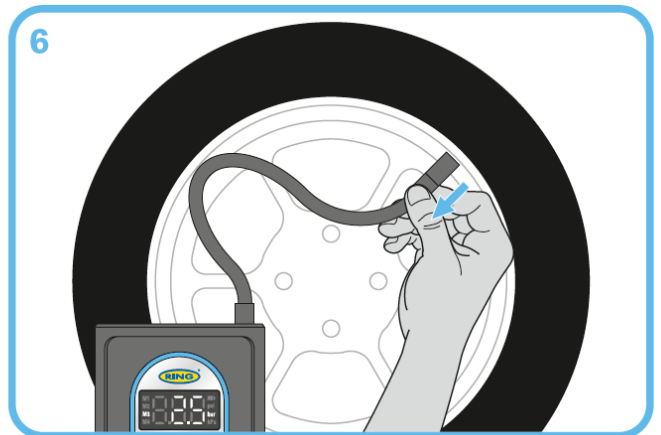
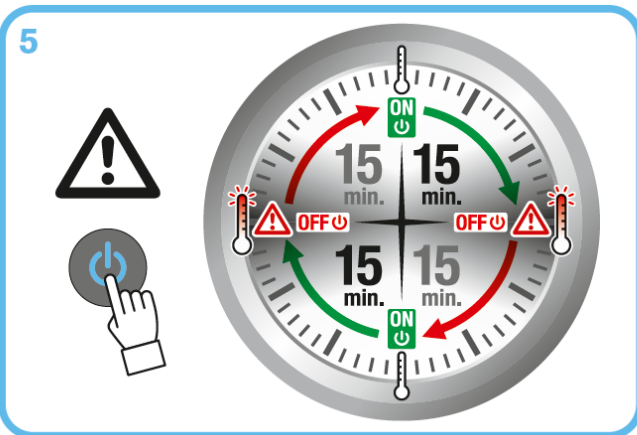
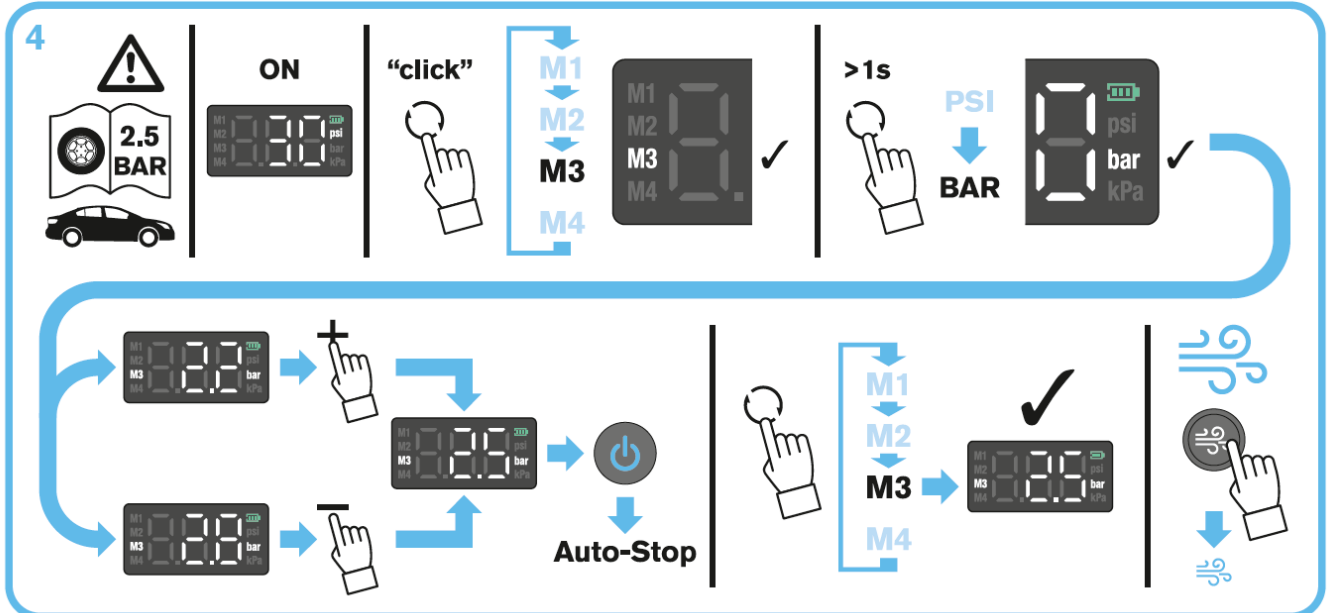
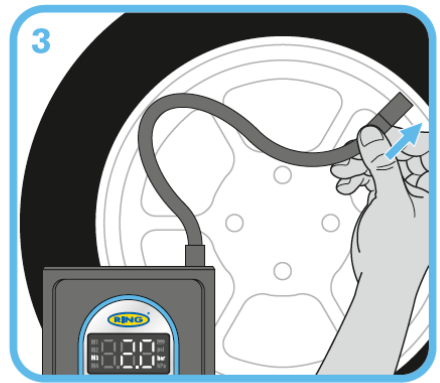
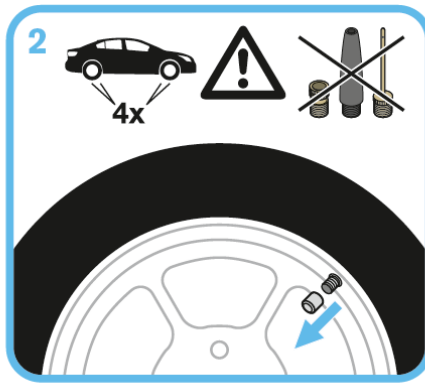
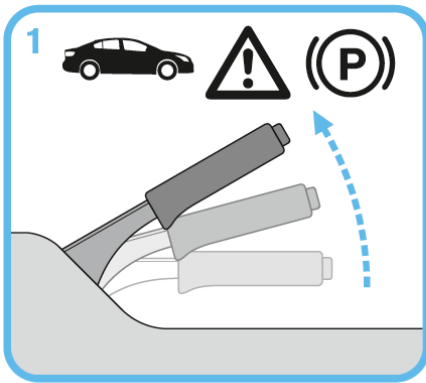
ATTENTION: The batteries in your product are the Lithium-Ion type. Do not dispose of battery packs/batteries into household waste, fire or water. Battery packs/batteries should be collected, recycled or disposed of in an environmentally friendly manner. The gauge on this compressor is for guidance only. Check pressure with a known accurate gauge. The compressor can be used without the engine running but this will drain the power from the battery.

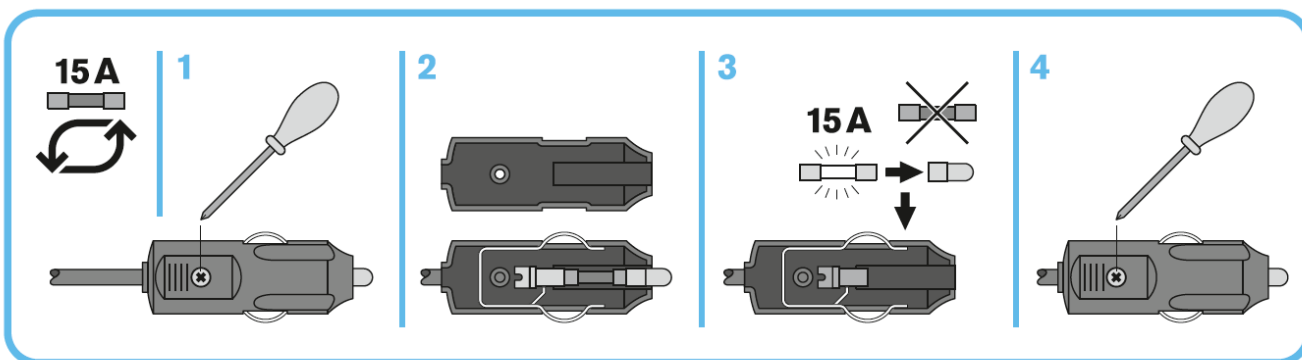
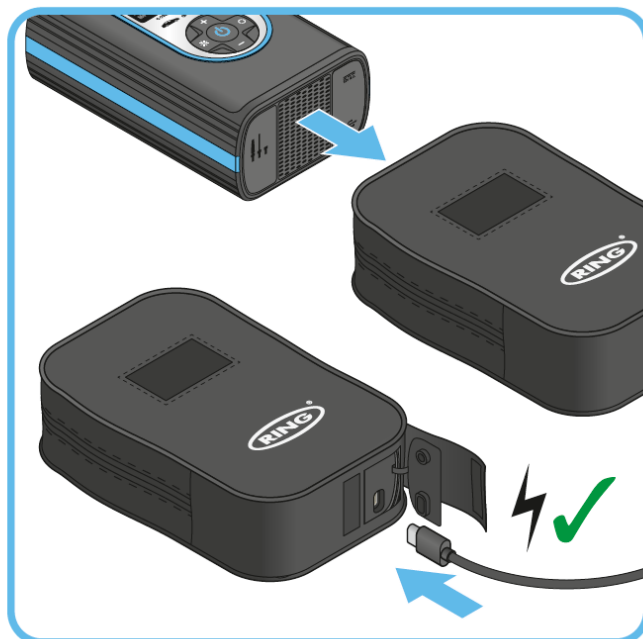
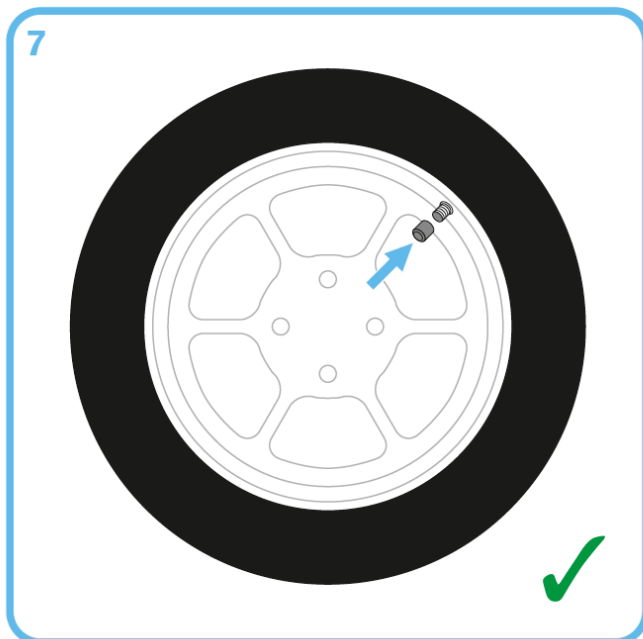
DIMENSION



INSTRUCTION OF USE







For list of General Power Tool Safety Warnings please scan the QR code or visit:

www.ringautomotive.com/en/product-safety-documents

Wear hearing protection. The impact of noise can cause damage to hearing.

UK Conformity

The UK Conformity Assessed mark identifies products conforming with the statutory requirements (refer to "Declaration of Conformity").

EU Conformity

The EU Conformity Assessed mark identifies products conforming with the statutory requirements (refer to "Declaration of Conformity").

UKCA / CE declaration

The UKCA / CE declaration of conformity is available on request from technicalsupport@ringautomotive.com

Refer to instructions for information

File instructions for future reference

Attention

Correctly inflated tyres will reduce fuel consumption and result in lower CO2 emissions.

Imported by

OSRAM GmbH Nonnendammallee 44 13629 Berlin Germany

www.osram.com

Manufactured by

Ring Automotive Limited Volvox House, Geldered Road, LEEDS, LS12 6NA, UNITED KINGDOM

Telephone +44 (0)113 213 2000

Fax +44 (0)113 231 0266

Email autosales@ringautomotive.com

www.ringautomotive.com





Documents / Resources



[RING RTC4000 Cordless Digital Tyre Inflator](#) [pdf] Instruction Manual

RTC4000 Cordless Digital Tyre Inflator, RTC4000, Cordless Digital Tyre Inflator, Digital Tyre Inflator, Tyre Inflator, Inflator

References

-  [Ring Automotive | Supplying the aftermarket with auto bulbs, tyre inflators, smart chargers, dash cameras, and more](#)
-  [OSRAM Americas | OSRAM SYLVANIA Homepage](#)
-  [Ring Automotive | Supplying the aftermarket with auto bulbs, tyre inflators, smart chargers, dash cameras, and more](#)
-  [Product Safety Documents | Ring Automotive](#)

[Manuals+.](#)