



ricoo TS0211 Monitor Screen Table Mount Universal Pivotal Tiltable Rotatable Instruction Manual

[Home](#) » [ricoo](#) » ricoo TS0211 Monitor Screen Table Mount Universal Pivotal Tiltable Rotatable Instruction Manual 

ricoo TS0211 Monitor Screen Table Mount Universal Pivotal Tiltable Rotatable Instruction Manual



Contents

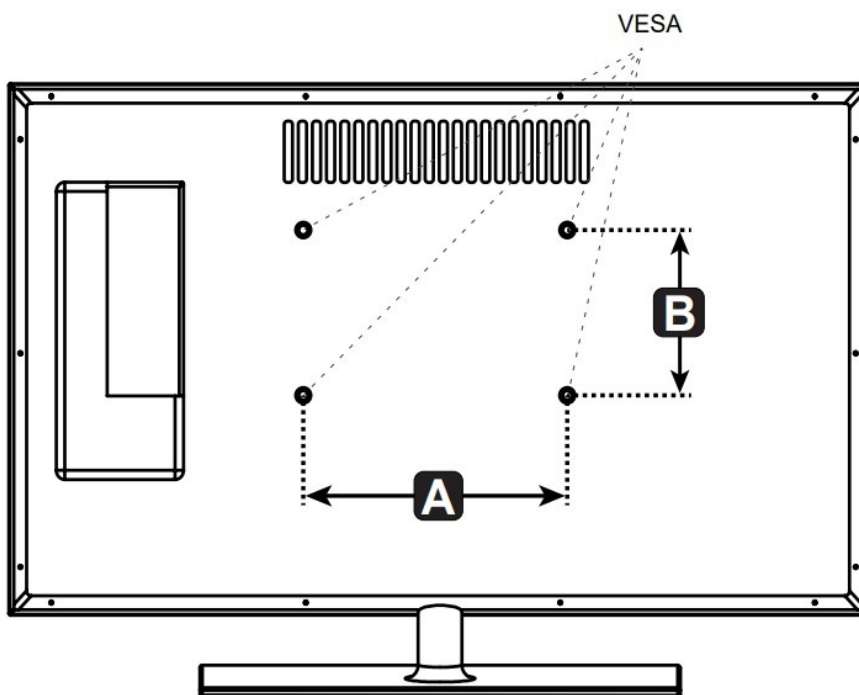
- [1 Assembly Instructions](#)
- [2 Assembly Instructions](#)
- [3 Documents / Resources](#)
 - [3.1 References](#)
- [4 Related Posts](#)

Assembly Instructions



MAX8 kg 17.6 lbs17.6 lbs

Warning: Do not exceed listed load weight. Property damage oder serious injury may occur!



A	75 mm
	100 mm

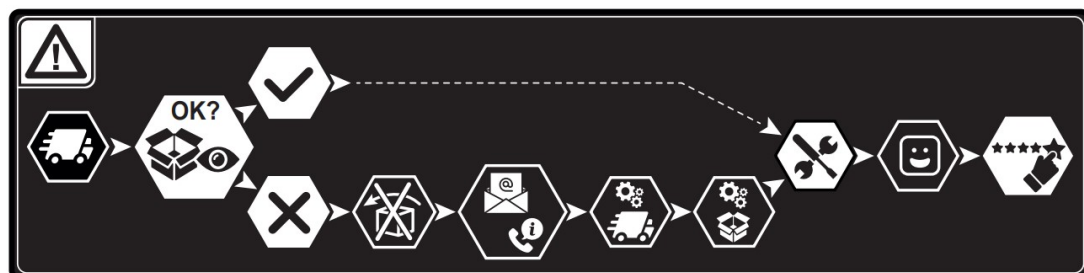
B	75 mm
	100 mm



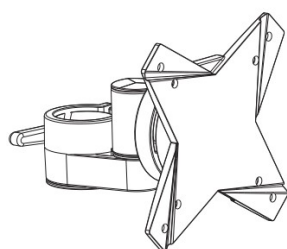
Please check **BEFORE** installation distance between VESA mounting holes on your display!

This screen mount supports VESA hole distance in the minimum and maximum distance ranges given above.

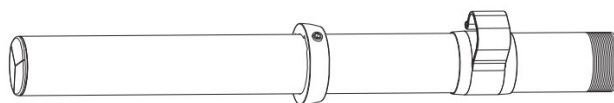
VESA – Hole distance = Distances between the mounting holes on the screen back.



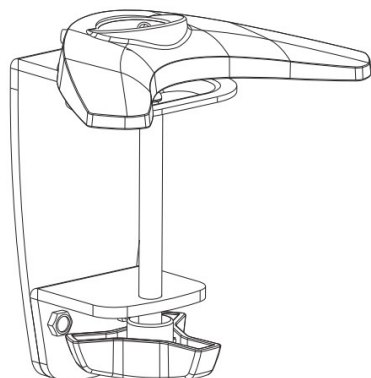
Scope of delivery



A x1



B x1



C x1



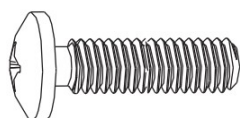
D x1



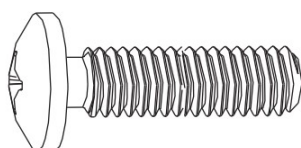
E x1



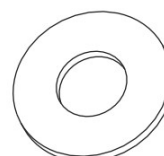
F x1



M-A x4
M4x14



M-B x4
M5x14



M-C x4
D5



P-A x1



P-B x1

The numbering on the plastic bag may differ / missing completely!

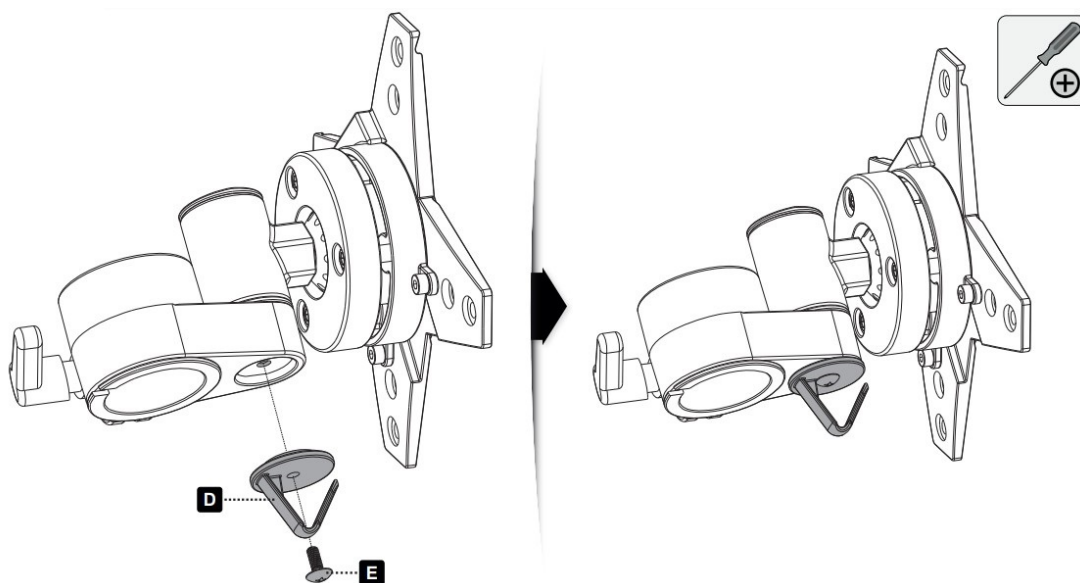
NOTE: READ THE ENTIRE INSTRUCTION MANUAL BEFORE YOU START INSTALLATION AND ASSEMBLY

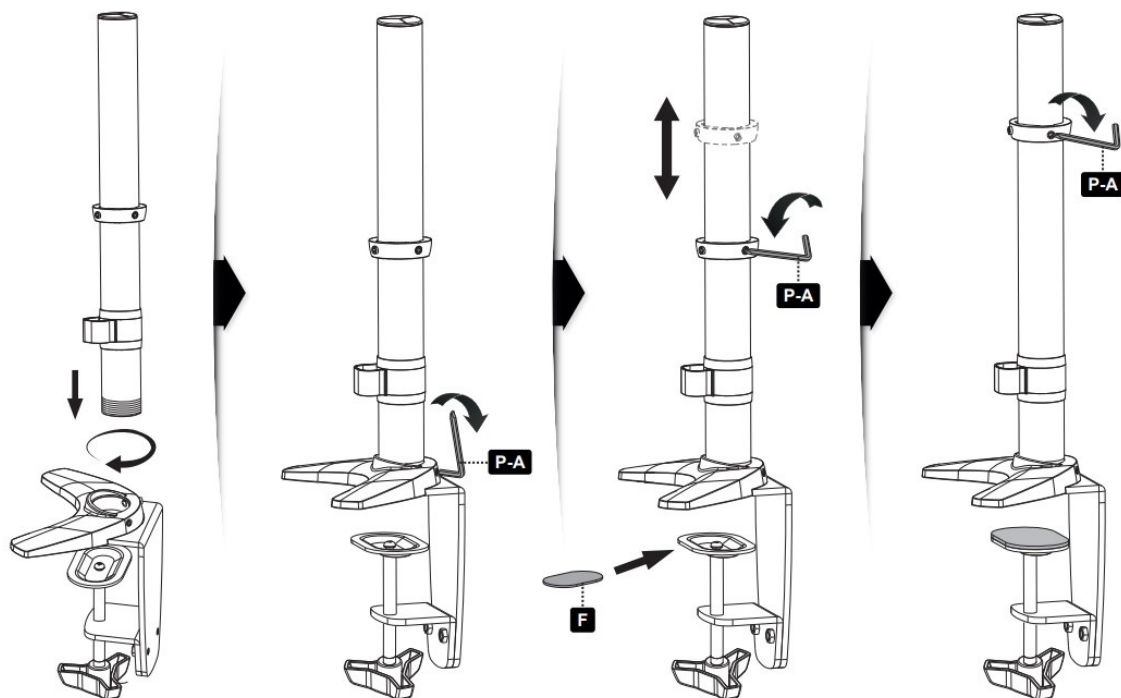
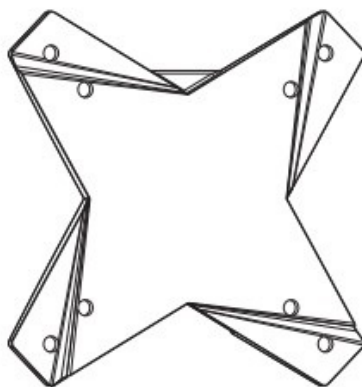
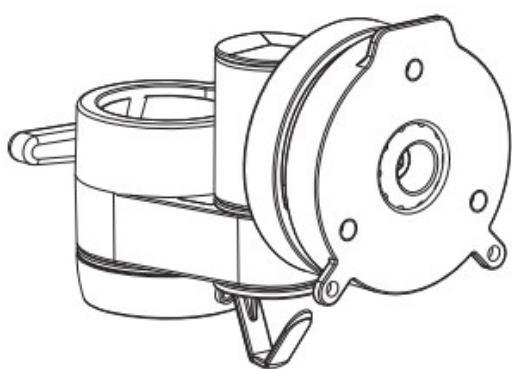
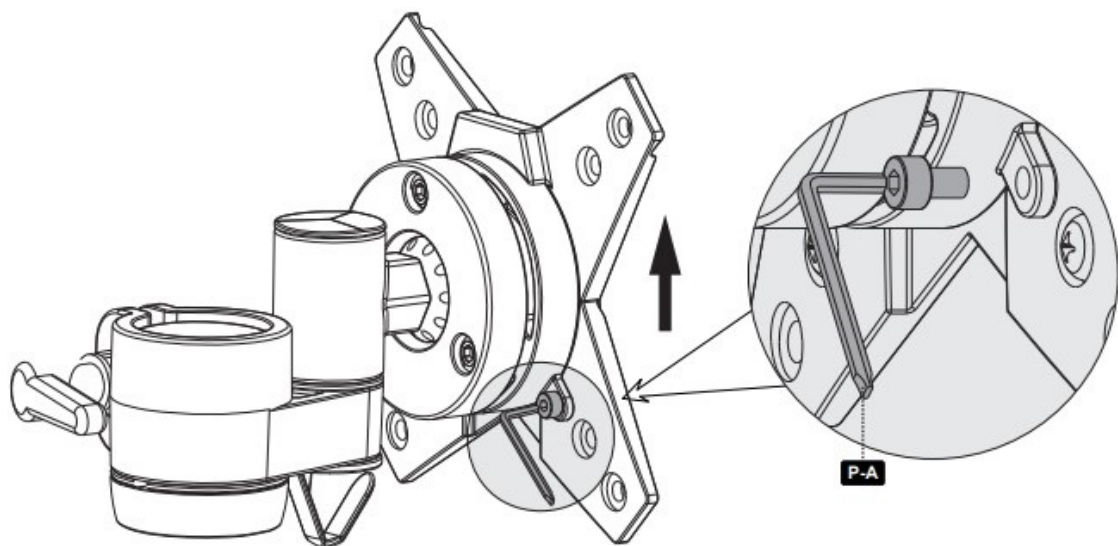
Please note: Images in these assembly instructions are only technical presentation of the product. Actual product design may vary minimally.

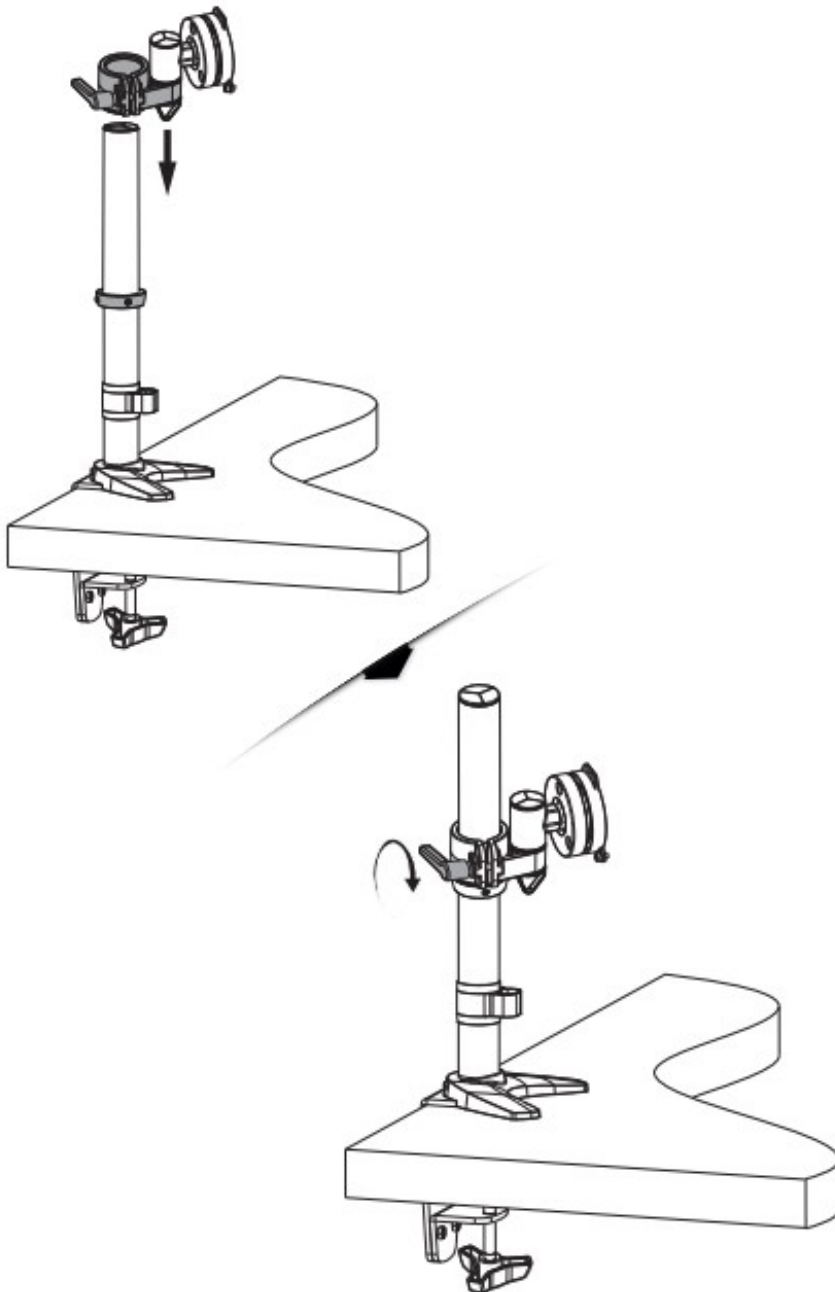
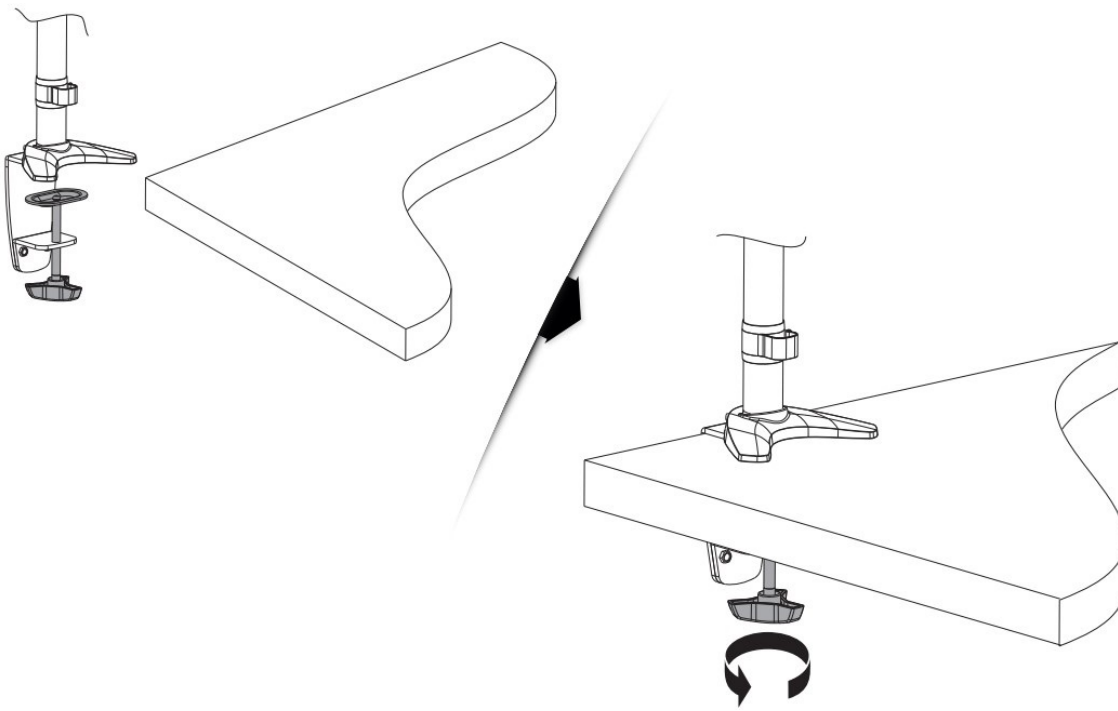
Do not begin the installation until you have read and understood all the instructions and warnings contained in this installation sheet. If you have any questions regarding any of the instructions or warnings, please contact your local distributor. This product was designed to be installed and used **ONLY** as specified in this manual. Improper installation of this product may cause damage or serious injury. This product may only be assembled / installed by the technical staff. Make sure that the supporting surface will safely support the combined weight of the equipment and all attached hardware and components. Always use an assistant or mechanical lifting equipment to safely lift and position the equipment. Make sure that before and after the installation of the product neither you nor somebody else can be injured and other objects can be damaged. In case of doubt request for help from an expert. This product is intended for indoor use only. Using this product outdoors could lead to product failure and personal injury. Tighten screws firmly, but do not over tighten. Over tightening can cause damage the items, this greatly reduces their holding power.

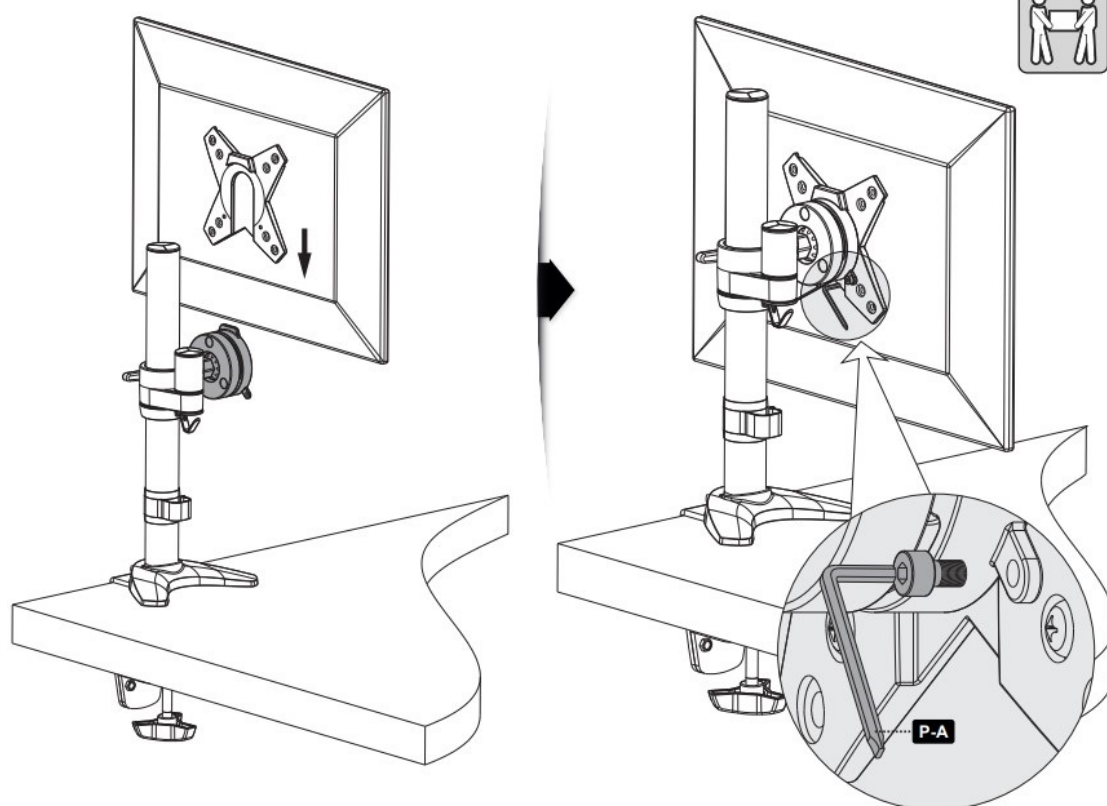
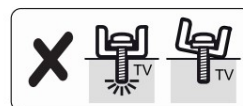
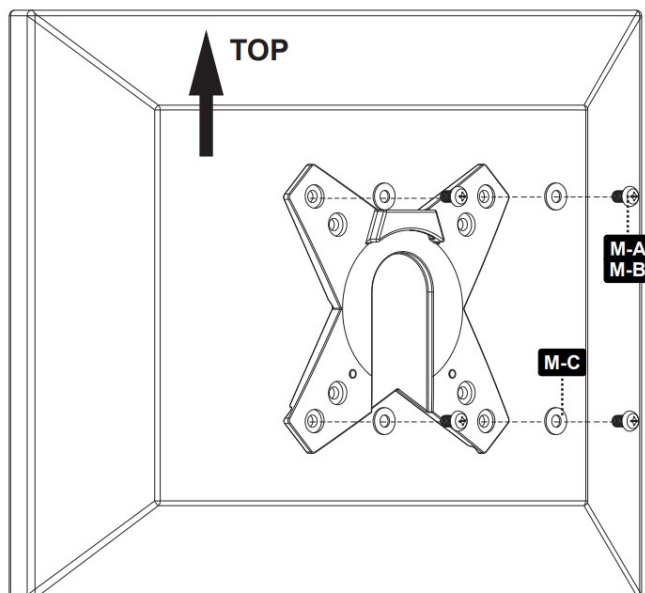
By reason of large television construction types on the market, we can't adjust our screen installation materials for each screen type. Therefore it is possible that the screws which are numerously delivered don't fit with your TV/Monitor. We ask for your understanding that we can't cover up all possibilities of many screen types.

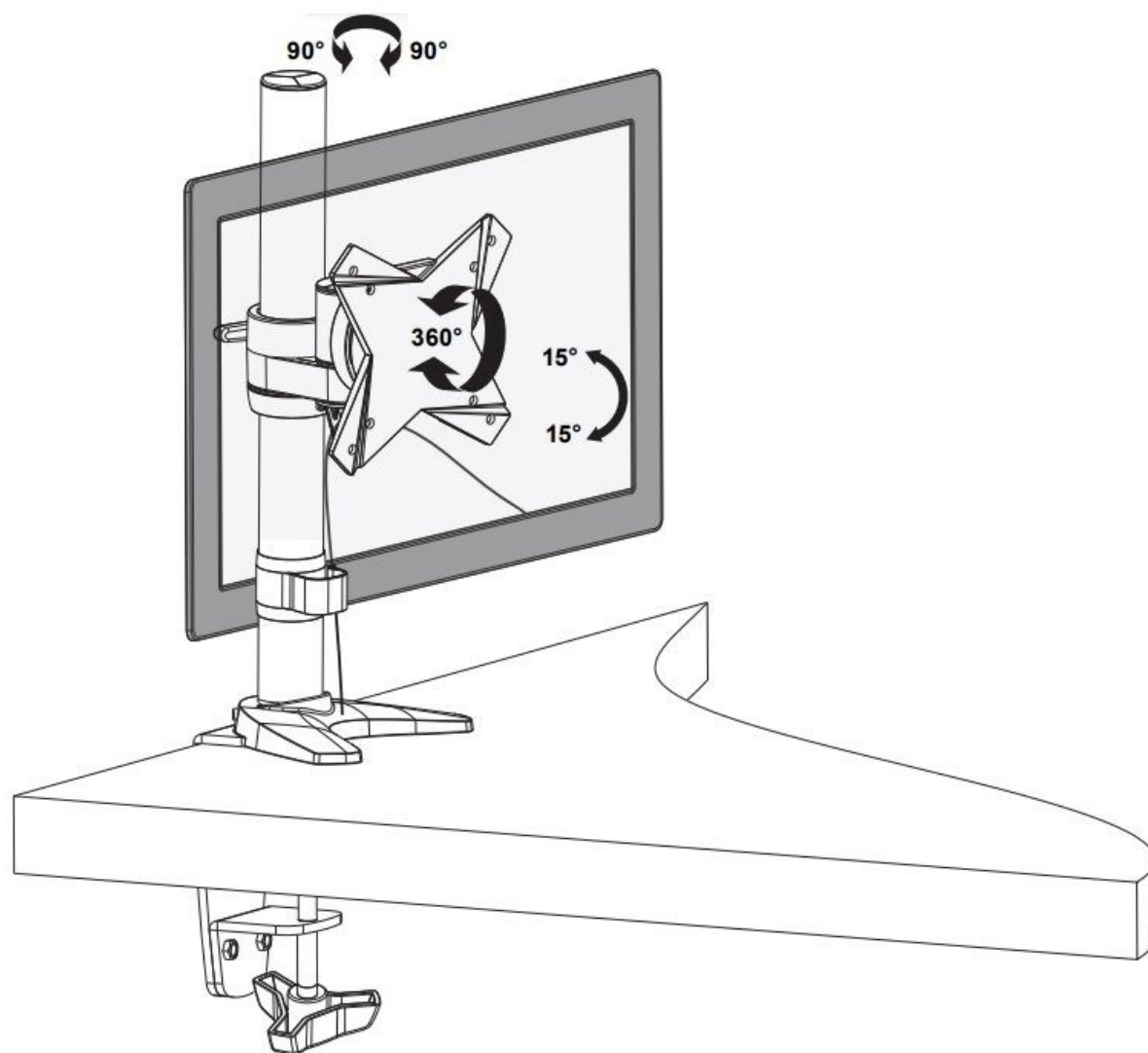
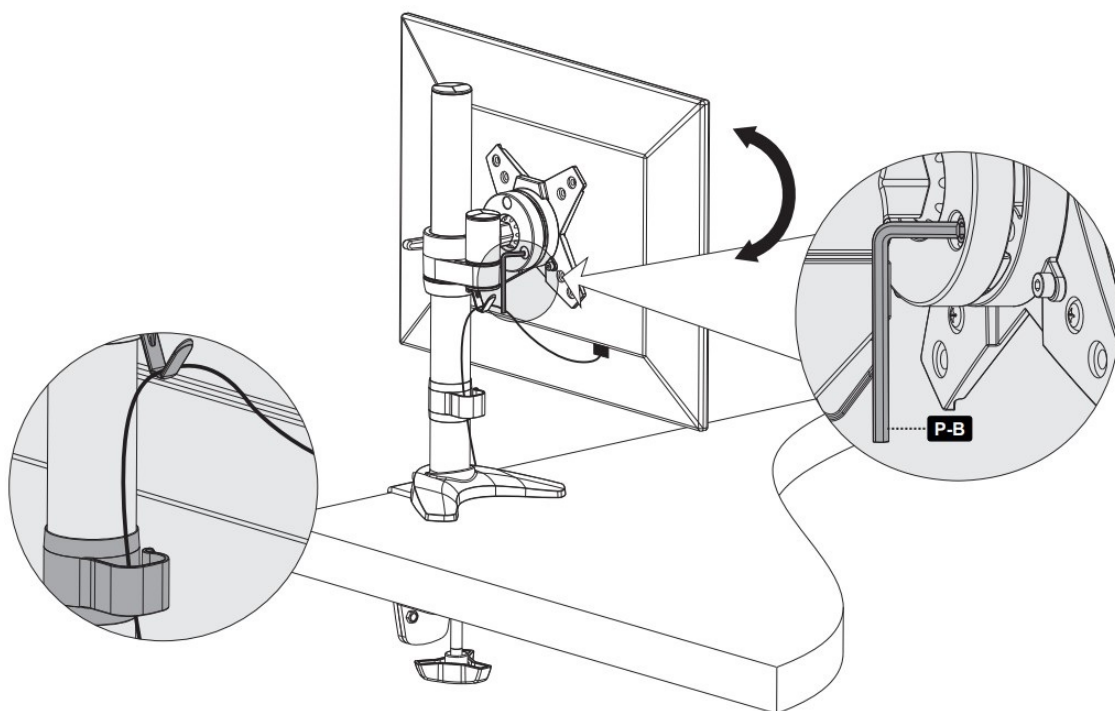
Assembly Instructions







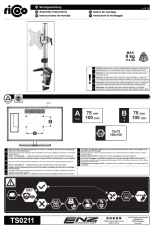






Done!

Documents / Resources

	<p>ricoo TS0211 Monitor Screen Table Mount Universal Pivortable Tilttable Rotatable [pdf] Instruction Manual</p> <p>TS0211 Monitor Screen Table Mount Universal Pivortable Tilttable Rotatable, TS0211, Monitor Screen Table Mount Universal Pivortable Tilttable Rotatable, Monitor Screen Table Mount, Screen Table Mount, Table Mount, Mount</p>
---	---

References

-  [RICOO-Shop](#)
-  [Multimediaprodukte und Werbetechnik günstig kaufen! | RICOO](#)