

**Richell®**

Richell 80064 Easy  
Open 3 Way Door Pet  
Wire Crate



# Richell 80064 Easy Open 3 Way Door Pet Wire Crate Instruction Manual

[Home](#) » [Richell](#) » Richell 80064 Easy Open 3 Way Door Pet Wire Crate Instruction Manual 

## Contents

- [1 Richell 80064 Easy Open 3 Way Door Pet Wire Crate](#)
- [2 Instruction Manual](#)
- [3 Intended Use](#)
- [4 Precautions for Use](#)
- [5 How to Assemble](#)
- [6 Installation of Vertical Connection Pipe](#)
- [7 Assembly of Side and Back Panels](#)
- [8 Assembly of Horizontal Connection Pipe and Front Panel with Door](#)
- [9 Installation of Tray](#)
- [10 Disassembly Method](#)
- [11 How to clean](#)
- [12 Documents / Resources](#)
  - [12.1 References](#)
- [13 Related Posts](#)

# Richell®

**Richell 80064 Easy Open 3 Way Door Pet Wire Crate**



## Richell Instruction Manual

Thank you for choosing Richell's Product. Please read this Instruction Manual carefully before use, and use the product properly. Please also keep this manual intact and in a convenient location for all to see and read. The figures used in this manual are to show operation method or structure, and may look different from the actual product. If you give this product to someone else, please also give this Instruction Manual to the new owner.

## Intended Use

This product is a crate designed for toy dogs and small dogs (up to 17.6 lbs.).

## Part Name

Before assembling this product, make sure the following parts are included:

- Front Panel with Door 1pc
- Back Panel 1pc
- Side Panel 2pcs
- Top Panel 1pc
- Tray 1pc
- Bottom Frame (Left) 1pc
- Bottom Frame (Right) 1pc
- Bottom Frame (Back) 1pc
- Horizontal Connection Pipe 1pc
- Vertical Connection Pipe 2pcs
- Fixing Screw 4pcs (Pre-mounted on Vertical Connection Pipe)
- Vertical Joint 5pcs (6pcs for model 1200)
- Joint 2pcs
- Movable Member (Left) 1pc
- Movable Member (Right) 1pc

## Explanation of Symbols

- **Warning:** This symbol is used to alert you that misuse of the product may cause serious personal injury or property damage.
- **Caution:** This symbol is used to alert you that misuse of the product may cause minor personal injury or property damage.
- **Important:** This symbol is used to alert you that misuse of the product may cause trouble, damage or shorter life of product.

## **Precautions for Use**

### **Warning**

- This product is a crate designed for toy dogs and small dogs (up to 17.6 lbs.). Do not use this product for any other use.
- Do not use this product while your dog is on a leash. The leash may be caught by the product and may cause unexpected accident.
- Please be aware that if each part is not installed correctly or if the product is used on a puppy or toy dog, the dog maybe caught between the wires, resulting in a serious accident.
- Dogs may unexpectedly react to thunder, lighting, or appearance of other animals and such action may cause injury or death. Use the crate within your eyeshot. Be sure to leave its Door open when going out and do not lock your dog in.
- If your dog doesn't like to be in the crate, it may force to escape, which may lead to a serious accident. Leave the Door open until they get familiar with this product.
- Some energetic dogs might stand inside of the crate and push the Front Panel hard enough to fall forward and cause injury. Place a weight, such as a plastic bottle filled with water, at the back of the Tray.

### **Caution**

- When opening or closing the Door, Front Panel, or Top Panel, be careful not to pinch your fingers, hands or dog.
- Make sure to close the Door and Front Panel securely. Your dog may run away or get injured.
- When using this product, be sure to secure the joints for Vertical Joint. Your dog may run away or be injured.
- Do not lean or sit on this product. It may cause accident or damage.
- Do not alter this product or use substitute parts. It may cause accidents or malfunction of the product.
- Do not place this product in front of a heat vent or close to a fire. It may cause product deformation, damage or burn.
- Discontinue to use the product immediately, if any abnormality is detected in the product or its installation location.
- This product has pointy parts. Please be careful not to injure yourself when assembling or handling it.
- Do not move the product by holding only the Front Panel that is pulled out. The Front Panel may come off and cause an injury or accidents.
- Do not place anything on top of the product.

### **Important**

- This product is designed for indoor use only. Do not use it outdoors.

### **How to Assemble**

It is recommended to assemble this product by 2 people. Use a Phillips-head screwdriver for assembly.

### **Installation of Vertical Connection Pipe**

1. Remove the Fixing Screw attached to the Vertical Connection Pipe.

2. Insert the Vertical Connection Pipes into the holes located right and left of the top of the Bottom Frame.
3. Secure Horizontal Connection Pipe and Vertical Connection Pipe from back side of the Bottom Frame using the Fixing Screw.

### **Assembly of Side and Back Panels**

Place Panels with the bottom horizontal wire to be on the outside.

1. Insert the Side Panels into the holes located right and left of the top of the Bottom Frame. Insert all Panels into the holes until they cannot be pushed, then lift them up to make sure the Frame doesn't fall off.
2. Insert the Back Panel into the holes located back of the top of the Bottom Frame. Lift it up to make sure the Frame doesn't fall off.

### **Assembly of Joint**

Fit the Joints into the following locations.

1. Align 2 Panels with the Horizontal Wires facing outside, and insert the Convex of the Joint to clip the Horizontal Wires.
2. Press the Joint from inside so that the Convex is placed between Vertical Wires.
3. Close and lock the Joints at 4 locations. Make sure they are securely fastened.

**Removal of Joints:** Insert some object, such as a coin, into the gap and push the Joint open as shown in the figure.

### **Assembly of Top Frame**

1. Insert the Top Frame into the Vertical Connection Pipe and Side Panel.
2. Press it into each panel until you hear a click sound.
3. Align the hole on the Vertical Connection Pipe with the hole on the Top Frame.

Right (R) and Left (L) are marked on the Top Frame. The marking is located Back Panel side.

### **Assembly of Horizontal Connection Pipe and Front Panel with Door**

1. Insert the Horizontal Connection Pipe into the Square hole located inside of the Top Frame (Right). Look into the hole on the Top Frame to ensure it is aligned with the round hole on the Horizontal Connection Pipe.
2. Secure the Horizontal Connection Pipe and the Vertical Connection Pipe from the top of the Top Frame (Right) using the Fitting Screw. Screwing is done on one side only.
3. Make sure the Right and Left Movable Members are on the front side. Fit the Front Panel with Door into the Movable Member. Fit the thickest wire on the top of the Front Panel with Door into the hole on the Movable Member located right side of the Top Frame. Repeat it with the left side of the Top Frame.

**Caution:** If the Top Frame is extended outward, the Wire may come off from the Movable Member and the Front Panel with Door may fall off. Be careful not to drop the Panel.

### **Assembly of Top Panel**

1. Slide the Lock on the Top Panel toward Opening. (4 locations for model 1200)
2. After hooking the back side Hook of the Top Panel to the Back Panel, hook the front side Hook to the Horizontal Connection Pipe.
3. Slide the Top Panel Lock so that it hooks on the Horizontal Connection Pipe and lock.

Only the Hook located in the center of the front cannot hook on the Horizontal Connection Pipe.

### **Installation of Vertical Joint**

Insert Vertical Joint into the locations with circle shown in the image below. (4 locations on the back side for model 1200)

### **Installation of Tray**

Insert the provided Tray until it touches the inside edge of the Bottom Frame.

### **Door Open/Close Operation**

1. Pull up the Door Lock.
2. Slide the Door to the side.

Door can be kept open by hanging it on the Hook.

### **Storage Operation of Front Panel with Door**

1. Release the Vertical Joint on the Door.
2. Pull the Front Panel with Door toward front and store it inside of the Crate.

**Caution:** Slide the Front Panel with Door all the way to the back until it stops.

### **Disassembly Method**

This product can be disassembled in reverse order to the installation.

1. Remove the Panel by disengaging the Fixing Screws and the U-shaped section of the Wire from the back side of the Bottom Frame. While expanding the Outer Tab located back side of the Bottom Frame and hooked on the U-shaped section of Wire, pull out the Panel from the Frame.
2. Pull up the Top Frame by disengaging the Tabs from the Wire.

### **How to Clean**

### **Steel Parts**

- Wipe off this product with washing cloth after squeezed firmly using a mild detergent and water. After Cleaning, place it in a shaded area for air dry to prevent discoloration, deformation, or rust.
- Do not use a scrub brush and/or a polishing powder as these may cause scratches, rust and/or discoloration to the product.
- Creosol and other disinfectants must be diluted to the specified concentration before use to prevent

discoloration.

- Do not use harsh chemicals, such as thinner, benzene or alcohol, as these may cause discoloration or abrasion to the finish.

## Removable Plastic Parts

- Use a mild detergent and water to clean. After Cleaning, place it in a shaded area for air dry to prevent discoloration.

## Specifications

<b>UPC</b>	803840 800645
<b>Dimensions</b>	35.6"W x 24"D x 24"H
<b>Materials</b>	<ul style="list-style-type: none"><li>• Top Frame / Door Lock / Tray: ABS resin</li><li>• Bottom Frame / Joint: Polypropylene</li><li>• Rubber Foot: Thermoplastic elastomer</li><li>• Movable Member / Sliding Member: Polycarbonate</li><li>• Wire / Connection Pipe: Steel (Polyester coating)</li></ul>
<b>Appropriate Dog Weight</b>	Toy dogs, Small dogs up to 17.6 lbs.

## FAQ

### 1. What is the maximum weight for dogs using this crate?

The crate is designed for toy dogs and small dogs up to 17.6 lbs.

### 2. Can this crate be used outdoors?

No, this product is designed for indoor use only.

### 3. What tools are needed for assembly?

A Phillips-head screwdriver is recommended for assembly.

### 4. How many people are recommended for assembling this crate?

It is recommended to assemble this product by 2 people.

### 5. How should I clean the crate?

Use a mild detergent and water for cleaning. Avoid harsh chemicals and place in a shaded area for air drying.

## Instruction Manual

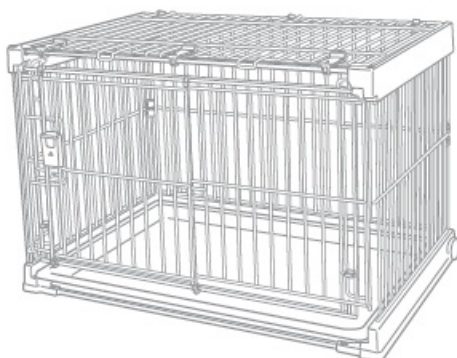
Thank you for choosing Richell's Product. Please read this Instruction Manual carefully before use, and use the product properly. Please also keep this manual intact and in a convenient location for all to see and read. The figures used in this manual are to show operation method or structure, and may look different from the actual product. If you give this product to someone else, please also give this Instruction Manual to the new owner.

## Intended Use

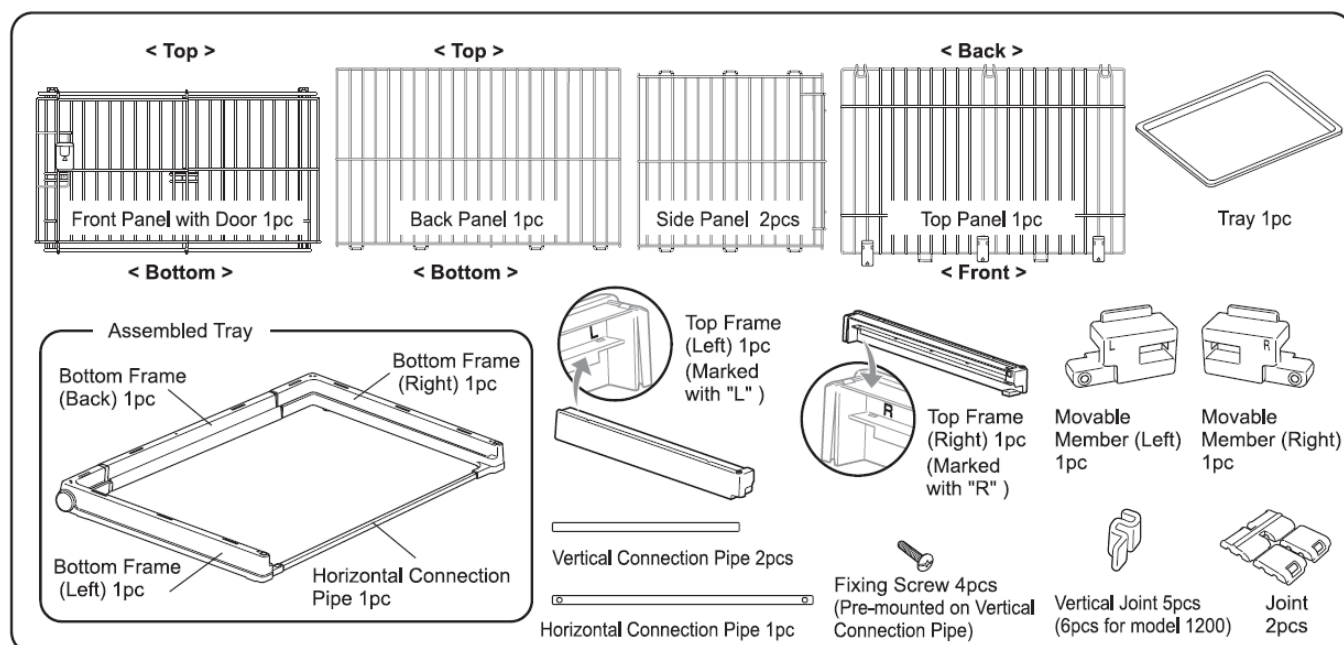
This product is a crate designed for toy dogs and small dogs (up to 17.6 lbs.).

## Part name

Before assembling this product, make sure the following parts are included: Bottom Frame (Left) and (Right), Bottom Frame (Back), and one Horizontal Connection Pipe are assembled at the time of shipping.



Shown in the image is model 900



## Explanation of Symbols

The following symbols are used in this Instruction Manual to indicate matters essential to safe use of the product. Please read and understand the meaning of the symbols before using this product.

Warning A Caution Important!) : This symbol is used to alert you that misuse of the product may cause serious personal injury or property damage.

Caution! This symbol is used to alert you that misuse of the product may cause minor personal injury or property damage.

Important This symbol is used to alert you that misuse of the product may cause trouble, damage or shorter life of the product.

## Precautions for Use

### Warning

- This product is a crate designed for toy dogs and small dogs (up to 17.6 lbs.). Do not use this product for any other use.
- Do not use this product while your dog is on a leash. The leash may be caught by the product and may cause unexpected accident.

- Please be aware that if each part is not installed correctly or if the product is used on a puppy or toy dog, the dog maybe caught between the wires, resulting in a serious accident.
- Dogs may unexpectedly react to thunder, lightning, or the appearance of other animals and such action may cause injury or death. Use the crate within your eyeshot. Be sure to leave its Door open when going out and do not lock your dog in.
- If your dog doesn't like to be in the crate, it may force to escape, which may lead to a serious accident. Leave the Door open until they get familiar with this product.
- Some energetic dogs might stand inside of the crate and push the Front Panel hard enough to fall forward and cause injury.
- Place a weight, such as a plastic bottle filled with water, at the back of the Tray.

### **Caution**

- When opening or closing the Door, Front Panel, or Top Panel, be careful not to pinch your fingers, hands or dog.
- Make sure to close the Door and Front Panel securely. Your dog may run away or get injured.
- When using this product, be sure to secure the Joints for Vertical Joint. Your dog may run away or be injured.
- Do not lean or sit on this product. It may cause accidents or damage.
- Do not alter this product or use substitute parts. It may cause accidents or malfunction of the product.
- Do not place this product in front of a heat vent or close to a fire. It may cause product deformation, damage or burn.
- Discontinue to use the product immediately, if any abnormality is detected in the product or its installation location.
- This product has pointy parts. Please be careful not to injure yourself when assembling or handling it.
- Do not move the product by holding only the Front Panel that is pulled out. The Front Panel may come off and cause an injury or accidents.
- Do not place anything on top of the product.

### **Important**

- This product is designed for indoor use only. Do not use it outdoors.

### **How to Assemble**

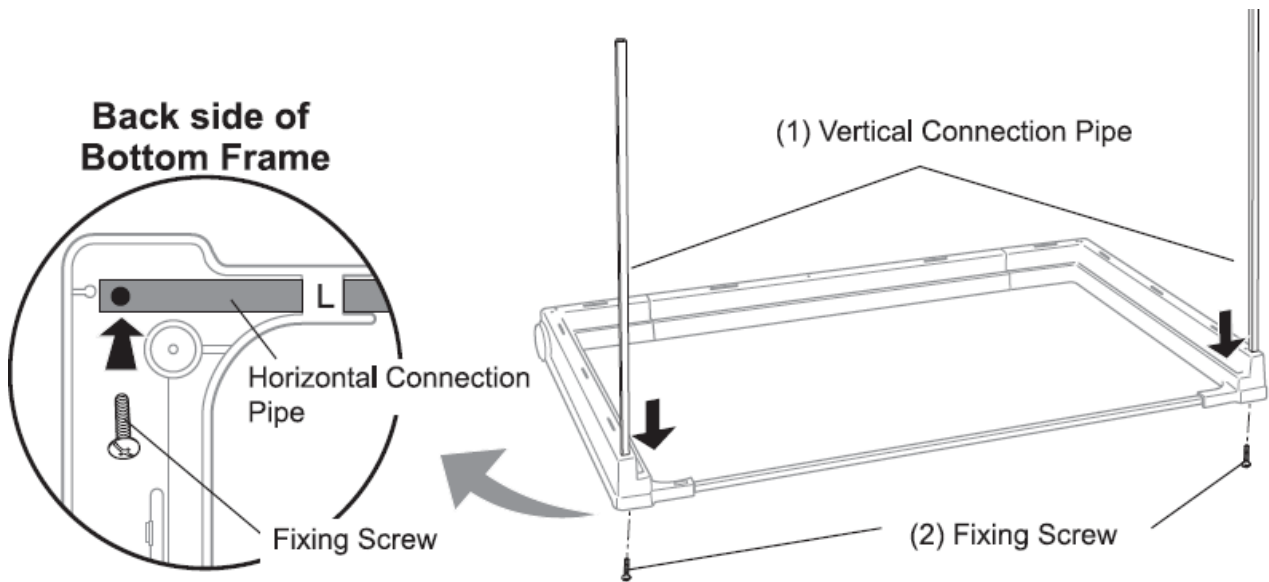
It is recommended to assemble this product by 2 people.  
Use a Phillips-head screwdriver for assembly

### **Installation of Vertical Connection Pipe**

Remove the Fixing Screw attached to the Vertical Connection Pipe.

1. Insert the Vertical Connection Pipes into the holes located right and left of the top of the Bottom Frame.
2. Secure Horizontal Connection Pipe and Vertical Connection Pipe from back side of the Bottom Frame using the Fixing Screw.

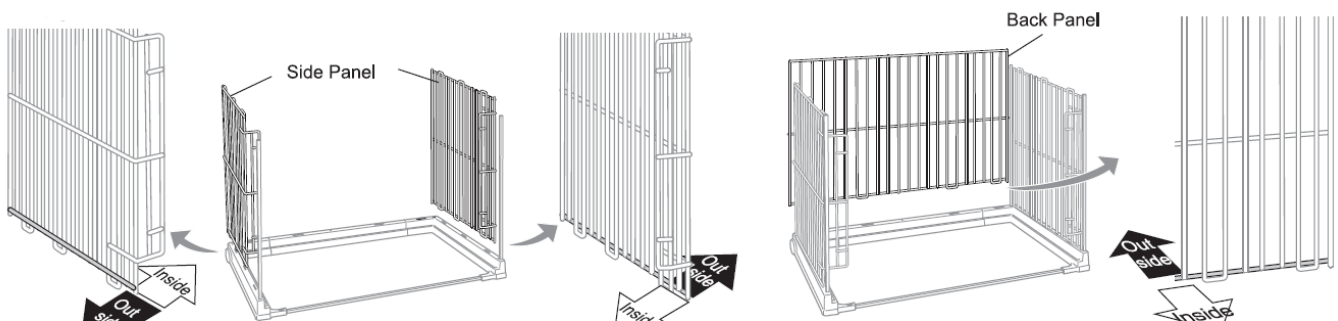




## Assembly of Side and Back Panels

Place Panels with the bottom horizontal wire to be on the outside.

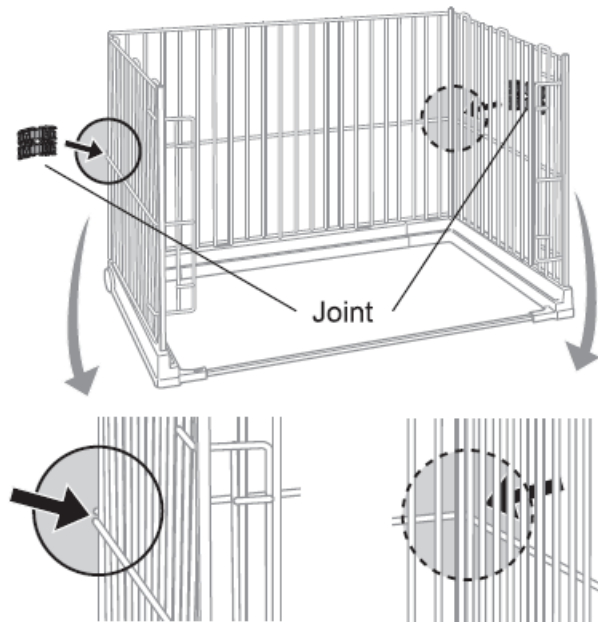
1. Insert the Side Panels into the holes located right and left of the top of the Bottom Frame. Insert all Panels into the holes until they can not be pushed, then lift them up to make sure the Frame doesn't fall off.
2. Insert the Back Panel into the holes located back of the top of the Bottom Frame. Lift it up to make sure the Frame doesn't fall off.



## Assembly of Joint

Fit the Joints into the following locations.

•

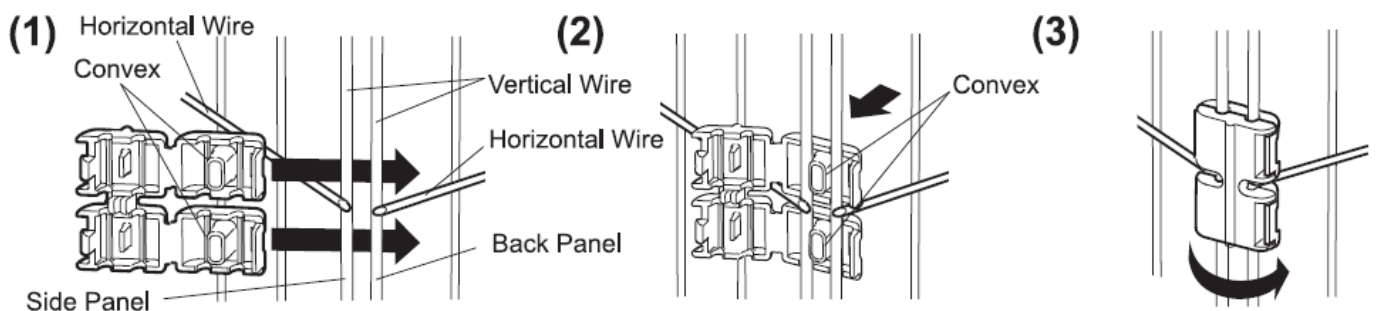


Align 2 Panels with the Horizontal Wires facing outside, and insert the Convex of the Joint to clip the Horizontal Wires.

- Press the Joint from inside so that the Convex is placed between Vertical Wires.
- Close and lock the Joints at 4 locations. Make sure they are securely fastened.

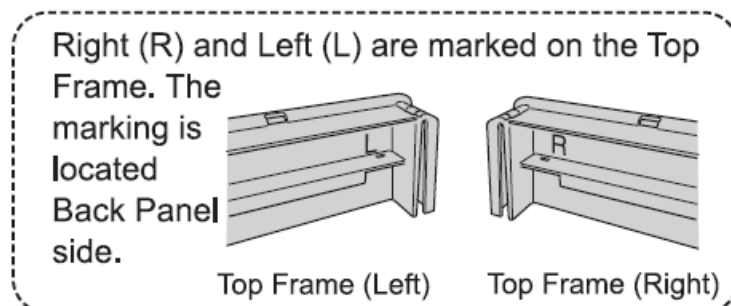
### Removal of Joints

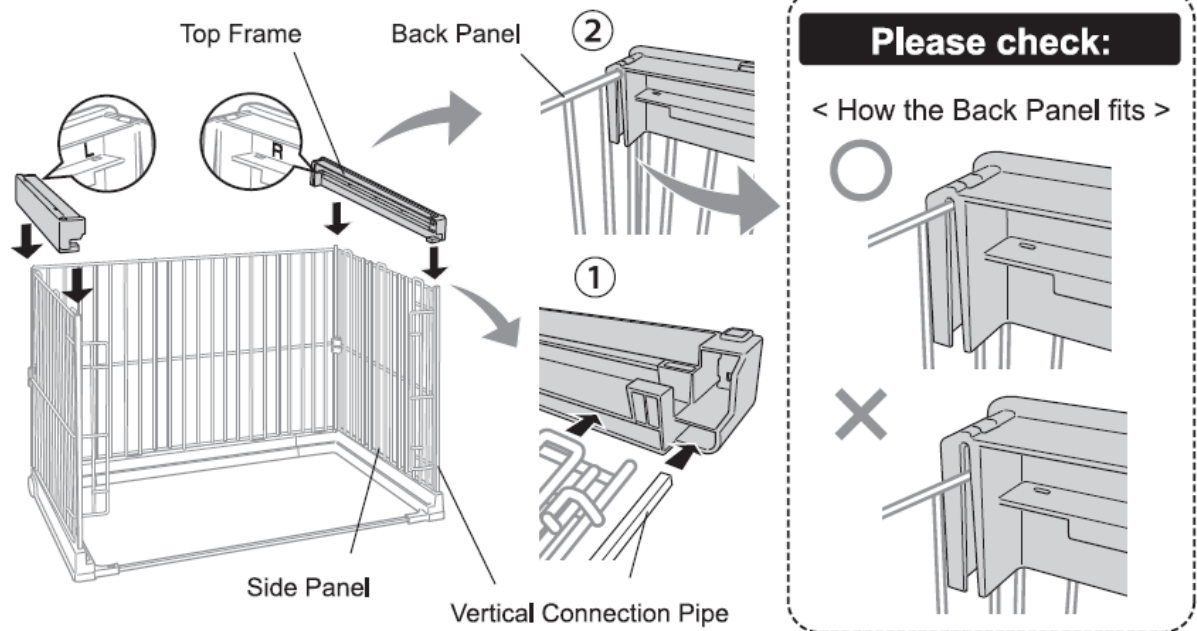
Insert some object, such as a coin, into the gap and push the Joint open as shown in the figure.



### Assembly of Top Frame

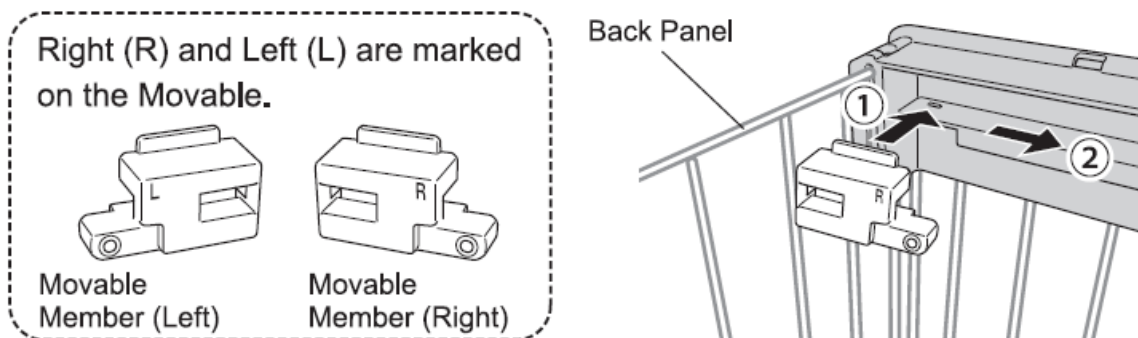
1. Insert the Top Frame into and below
2. Vertical Connection Pipe and Side Panel Back Panel
  - When fitting press it into each panel until you hear a click sound.
  - Align the hole on the Vertical Connection Pipe with the hole on the Top Frame.





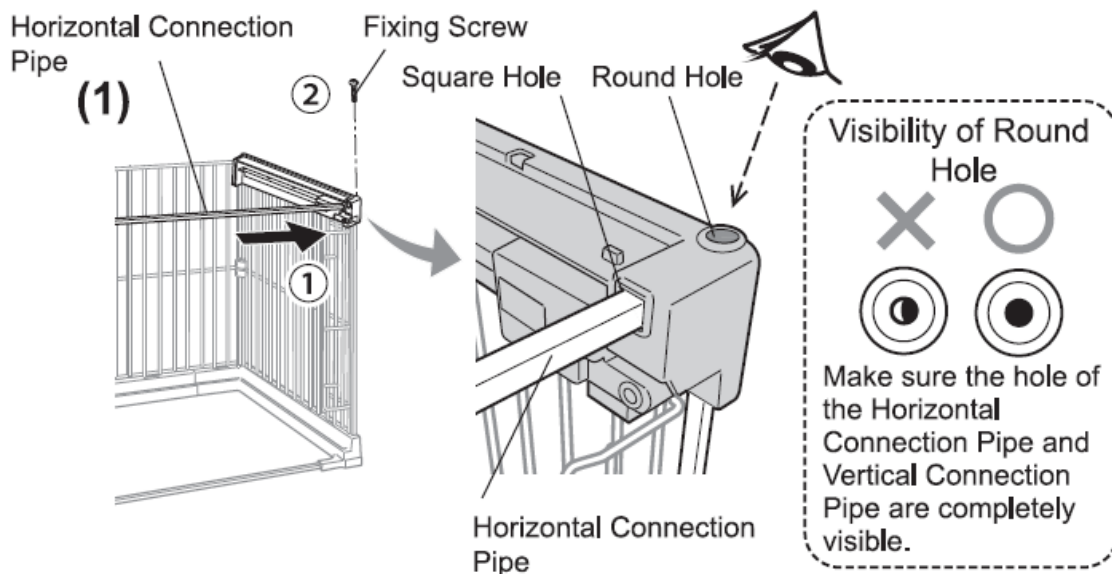
Attach Movable Member to the inside of the Top Frame.

1. insert the Movable Member into the rail from the back of the Top Frame,
2. Slide it all the way to the Front until it stops.



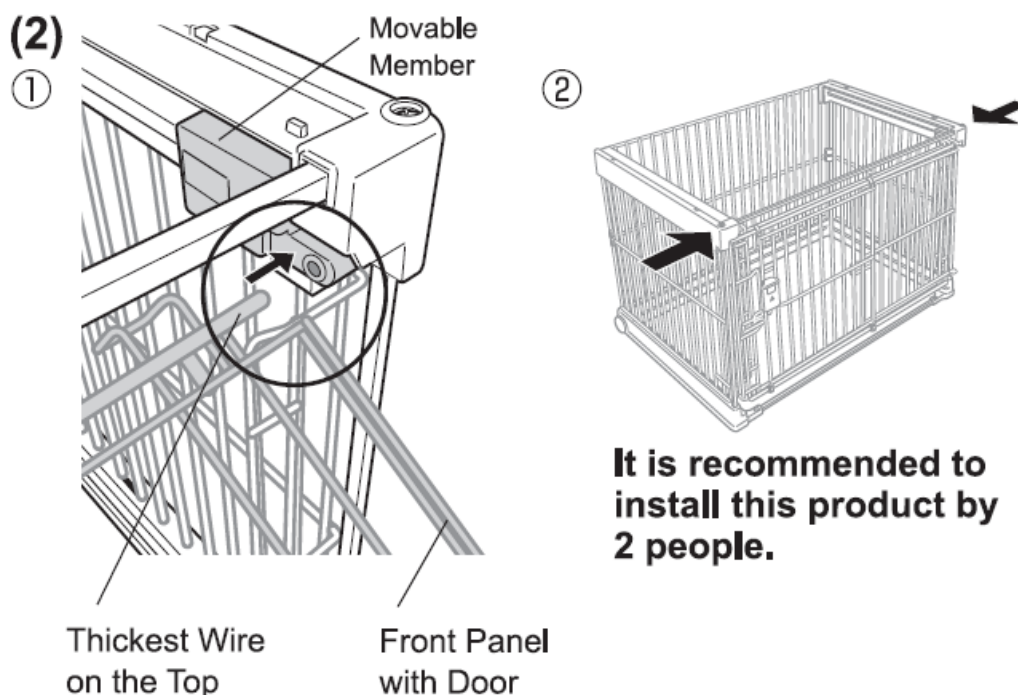
## Assembly of Horizontal Connection Pipe and Front Panel with Door

1. CDInsert the Horizontal Connection Pipe into the Square hole located inside of the Top Frame (Right). Look into the hole on the Top Frame to ensure it is aligned with the round hole on the Horizontal Connection Pipe. (See Visibility of Round Hole)  
Secure the Horizontal Connection Pipe and the Vertical] Connection Pipe from the top of the Top Frame (Right) using the Fitting Screw. Screwing is done on one side only.  
(If both sides is screwed, the Front Panel with Door cannot be assembled.) After the pipes are screwed in, make sure the Horizontal Connection Pipe cannot be pulled out.
2. Make sure the Right and Left Movable Members are on the front side. Fit the Front Panel with the Door into the Movable Member. Fit the thickest wire on the top of the Front Panel with Door into the hole on the Movable Member located right side of the Top Frame. Repeat it with the left side of the Top Frame.



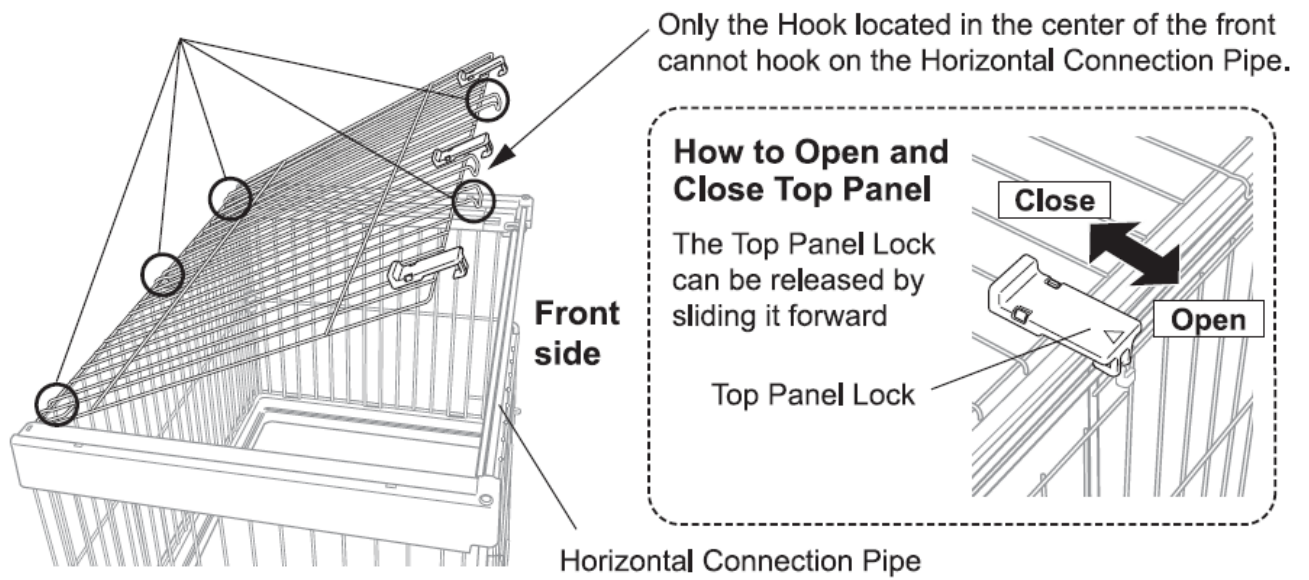
### Caution

- If the Top Frame is extended outward, the Wire may come off from the Movable Member and the Front Panel with Door may fall off. Be careful not to drop the Panel.
- Push the Top Frame inward from both right and left sides and look into the Round Hole to align it with the hole on the Horizontal Connection Pipe (Please see Appearance of Round Hole).
- Secure the Horizontal Connection Pipe and the Vertical Connection
- Pipe from the top side of the Top Frame (Left) using the Fitting Screw.
- After the pipes are screwed in, make sure the Horizontal Connection Pipe cannot be pulled out.



### Assembly of Top Panel

1. Slide the Lock on the Top Panel toward the Opening. (locations for model 1200)
2. After hooking the back side Hook of the Top Panel to the Back Panel, hook the front side Hook to the Horizontal Connection Pipe
3. Slide the Top Panel Lock so that it hooks on the Horizontal Connection Pipe and lock.

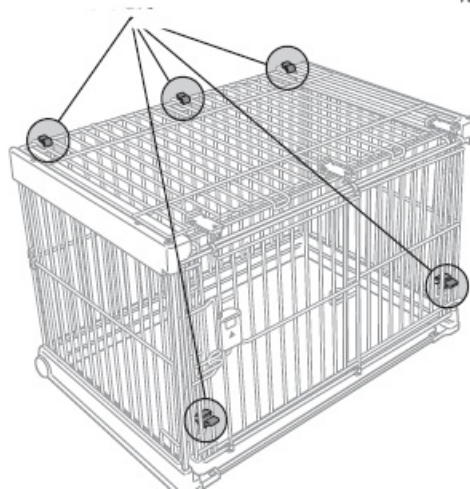


### Installation of Vertical Joint

Insert Vertical Joint into the locations with circle shown in the image below.  
(4 locations on the back side for model 1200)

### Installation of Tray

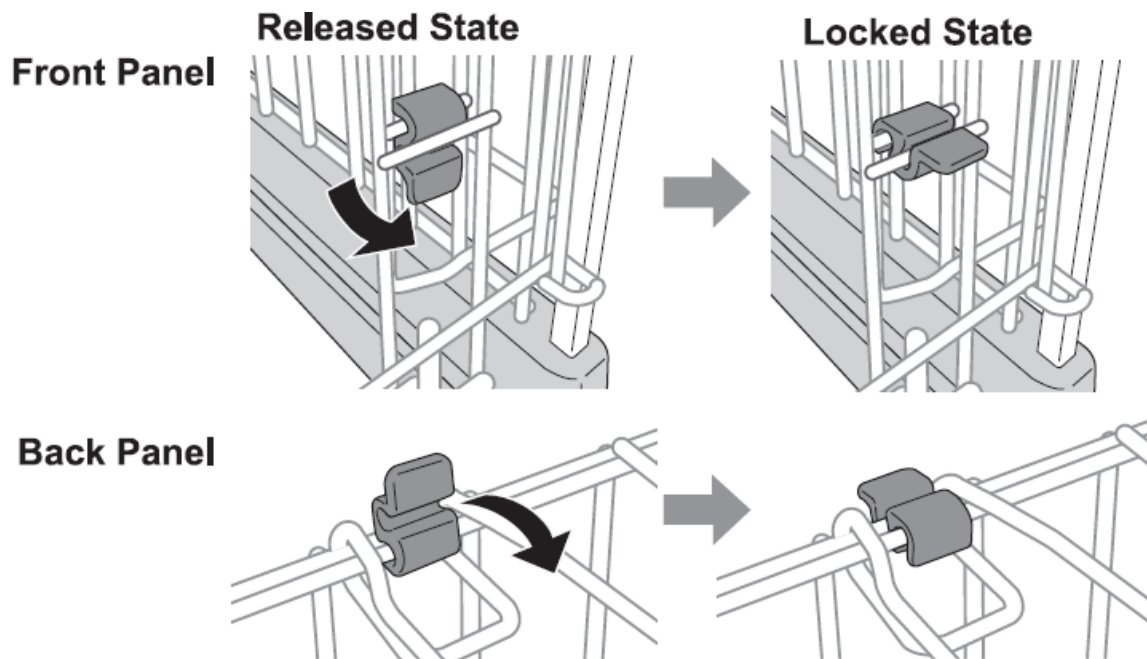
Insert the provided Tray until it touches the inside edge of the Bottom Frame.



### Door Open/Close Operation

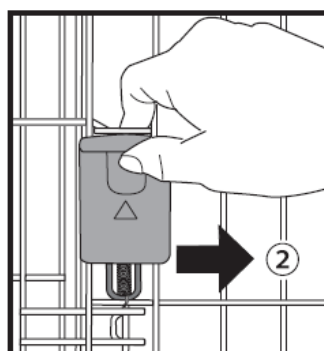
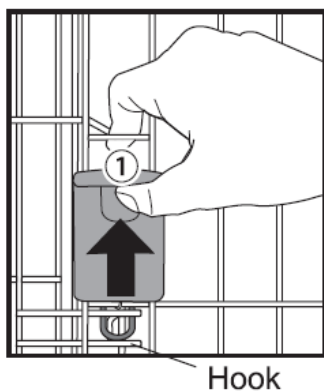
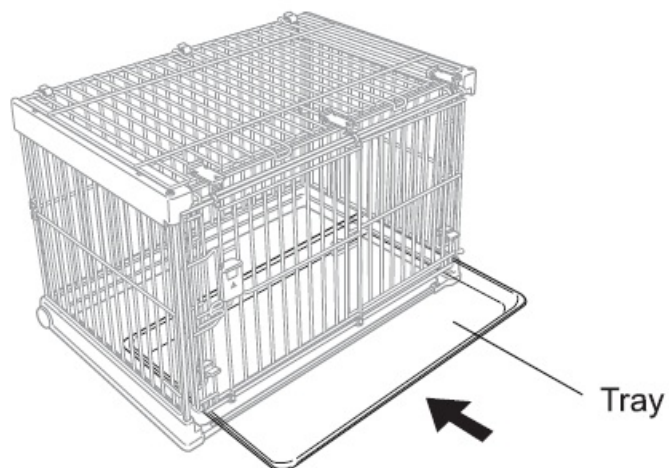
1. Pull up the Door Lock
2. Slide the Door to the side



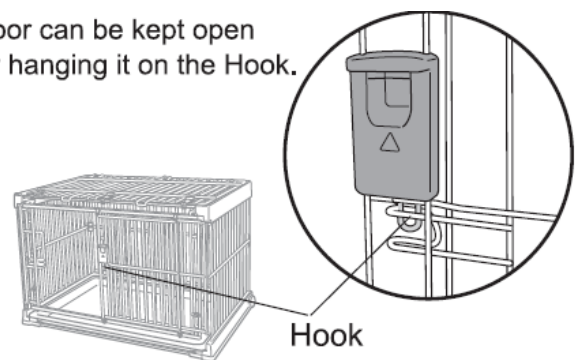


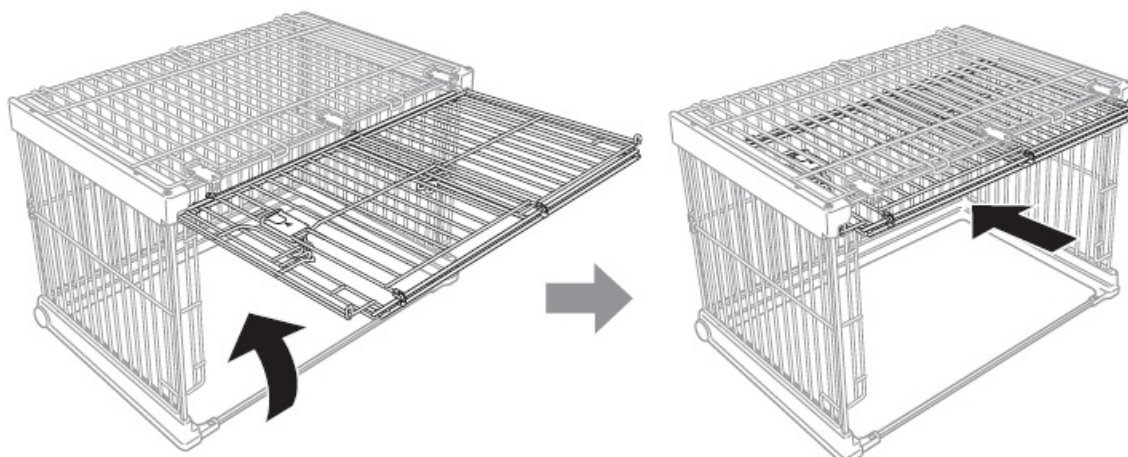
### Storage Operation of Front Panel with Door

1. Release the Vertical Joint on the Door (see page 3, Installation and Release of Vertical Joint),
2. Pull the Front Panel with the Door toward front and store it inside of the Crate.



Door can be kept open by hanging it on the Hook.





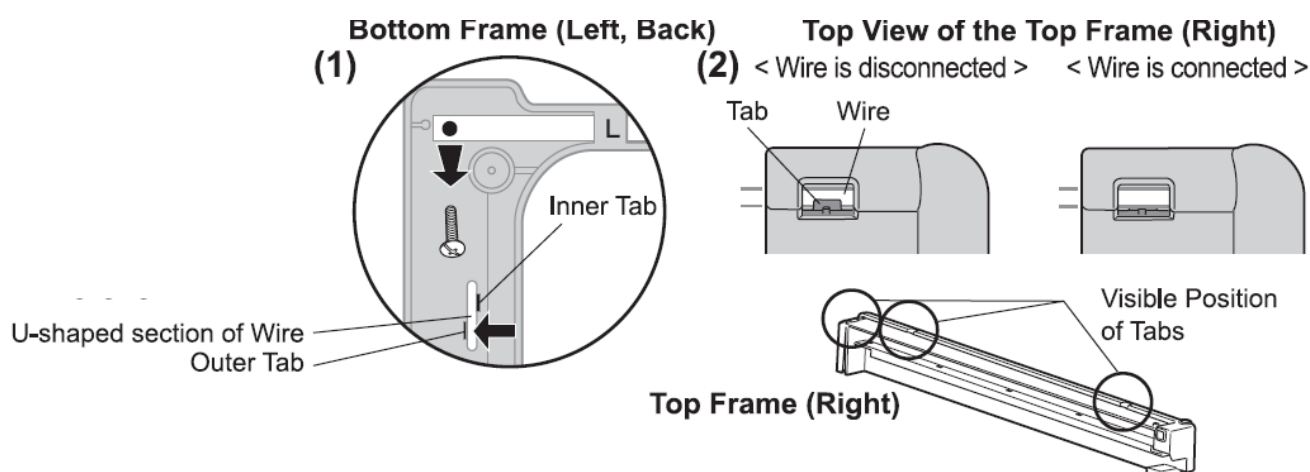
### Caution

\* Slide the Front Panel with the Door all the way to the back until it stops.

## Disassembly Method

This product can be disassembled in reverse order to the installation.

1.



Remove the Panel by disengaging the Fixing Screws and the U-shaped section of the Wire from the back side of the Bottom Frame.

While expanding the Outer Tab located back side of the Bottom Frame and hooked on the U-shaped section of Wire, pull out the Panel from the Frame.

2. Pull up the Top Frame by disengaging the Tabs from the Wire.

## How to clean

### Steel Parts

- Wipe off this product with a washing cloth after squeezing firmly using a mild detergent and water.
- After Cleaning, place it in a shaded area for air drying to prevent discoloration, deformation, or rust.
- Do not use a scrub brush and/or a polishing powder as these may cause scratches, rust and/or discoloration to the product.
- Cresols and other disinfectants must be diluted to the specified concentration before use to prevent discoloration.

- Do not use harsh chemicals, such as thinner, benzene or alcohol, as these may cause discoloration or abrasion to the finish. < Removable Plastic Parts >
- Use a mild detergent and water to clean. After Cleaning, place it in a shaded area for air dry to prevent discoloration.
- 

UPC	803840 800645
Dimensions	35.5"W x 24"D x 24"H
Materials	Top Frame / Door Lock / Tray : ABS resin      Bottom Frame / Joint : Polypropylene Rubber Foot : Thermoplastic elastomer      Movable Member / Sliding Member : Polyacetal Wire / Connection Pipe : Steel (Polyester coating)
Appropriate Dog Weight	Toy dogs, Small dogs   up to 17.6 lbs.

Please note that product specifications and design may change without prior notice for the purpose of quality improvement.

- Should you notice anything regarding the quality of this product, please contact us using the information below.

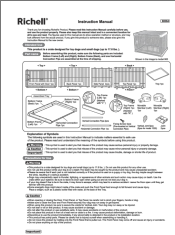
Designed by: Richell Corporation, Japan

#### Distributed by:

- Richell USA, Inc.
- Grand Prairie, Texas 75050
- Phone [972-641-9795](tel:972-641-9795) Fax [972-641-8495](tel:972-641-8495)
- Visit us at [www.richellusa.com](http://www.richellusa.com)
- MADE IN VIETNAM



#### Documents / Resources

	<p><a href="#">Richell 80064 Easy Open 3 Way Door Pet Wire Crate</a> [pdf] Instruction Manual 80064, A240531, 80064 Easy Open 3 Way Door Pet Wire Crate, 80064, Easy Open 3 Way Door Pet Wire Crate, Way Door Pet Wire Crate, Pet Wire Crate, Wire Crate</p>
---	--

#### References

- [User Manual](#)



