



# RICE LAKE OnTrak Truck Scale Data Management Program Installation Guide

[Home](#) » [RICE LAKE](#) » RICE LAKE OnTrak Truck Scale Data Management Program Installation Guide 

## Contents

- [1 RICE LAKE OnTrak Truck Scale Data Management Program Installation](#)
- [2 Installation](#)
- [3 License](#)
- [4 Documents / Resources](#)
  - [4.1 References](#)
- [5 Related Posts](#)

# **RICE LAKE®**

**RICE LAKE OnTrak Truck Scale Data Management Program Installation**



## Installation

The OnTrak Truck Scale Data Management Program download has a large file size (2.7 GB). A reliable, high-bandwidth internet connection is required for the download.

Manuals and additional resources are available from Rice Lake Weighing Systems at [www.ricelake.com/manuals](http://www.ricelake.com/manuals) Warranty information is available at [www.ricelake.com/warranties](http://www.ricelake.com/warranties)

## System Requirements

- Windows® 10 or newer
- 1.5+ GHz processor
- 8+ GB of RAM
- 10+ GB hard drive space

## Installation

1. Download the OnTrak program and extract the zip file.

Open the OnTrak program folder and launch the OnTrak.Installer.exe file. The Open File – Security Warning popup displays.

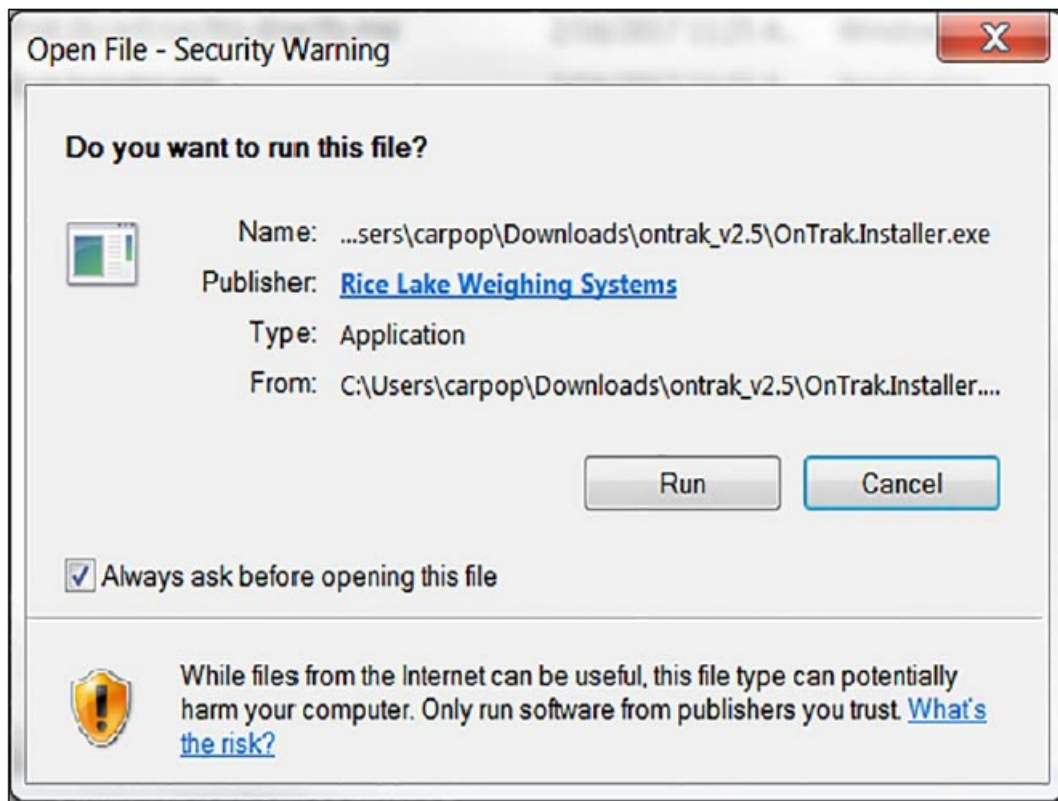
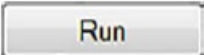
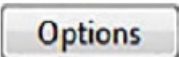
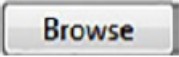
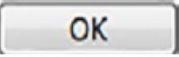

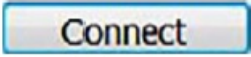
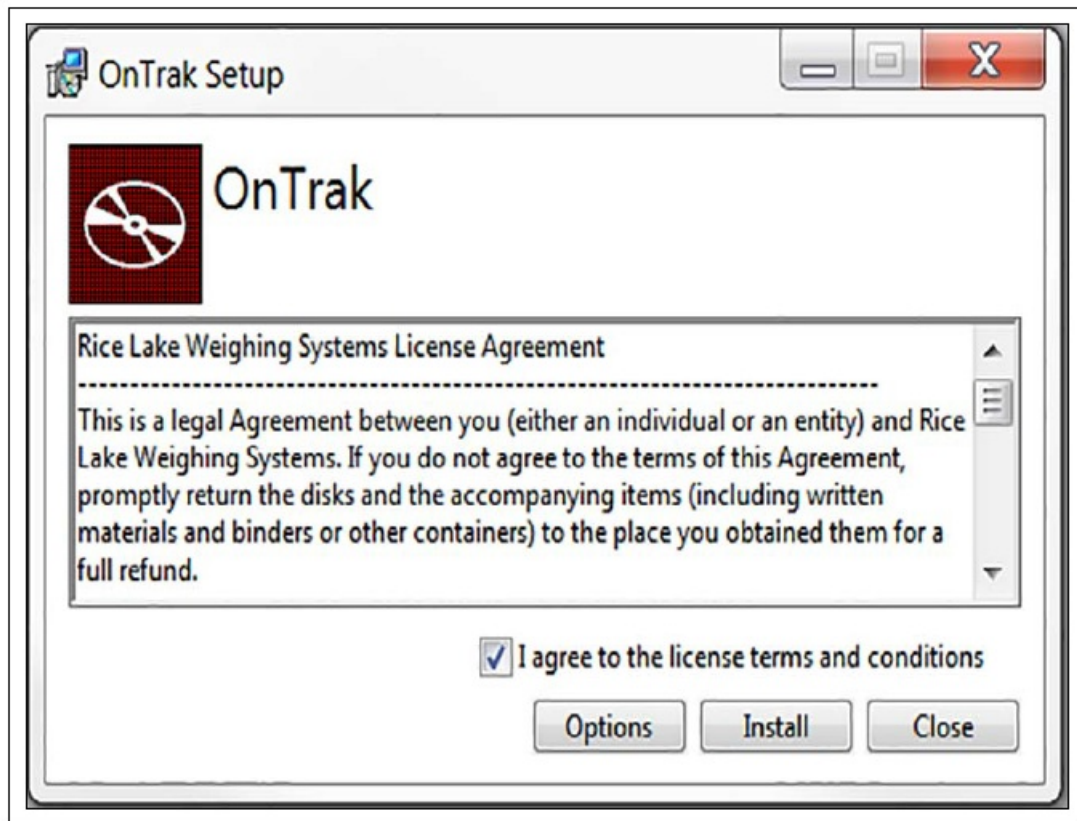


Figure 1. Security Warning

2. Select 
3. Read the Rice Lake Weighing Systems License Agreement. Check the box below the agreement if the terms are acceptable.
4. Press  then  to install the program in the desired location.
5. Press  Display returns to setup Rice Lake Weighing Systems License Agreement.
6. Press  If not already installed on the PC, Microsoft® SQL Server installs. A Database Installer displays.
7. Press  confirm the SQL Server Name.



*Figure 2. Rice Lake Weighing Systems' License Agreement*

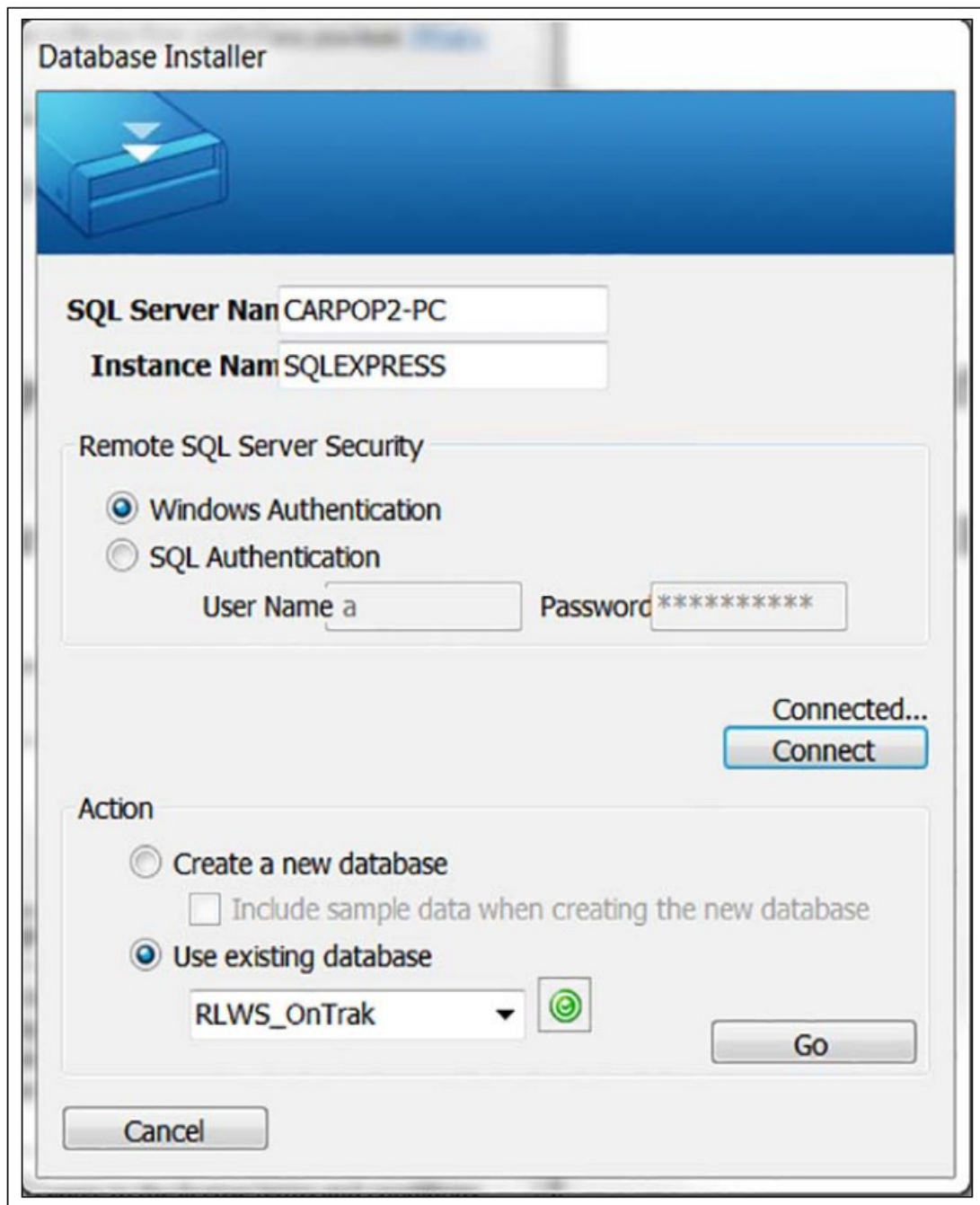
8. Select the appropriate radio buttons for the Remote SQL Server Security and Action areas of the display. To authenticate the SQL server, select the SQL authentication radio button and enter a user name and password. This is only required if connecting to a remote SQL server. For assistance, contact the IT department.

If creating a new database and sample data is desired, check the box under it.

If using an existing database, select it from a pull-down menu. OnTrak's default database is RLWS\_OnTrak.

9. Press . Installation Complete popup displays.

10. **IMPORTANT:** If there were errors during installation, contact Rice Lake Weighing Systems support.



*Figure 3. Database Installer*

11. Press  OnTrak is successfully installed.

OnTrak™ Truck Scale Data Management Program

## License

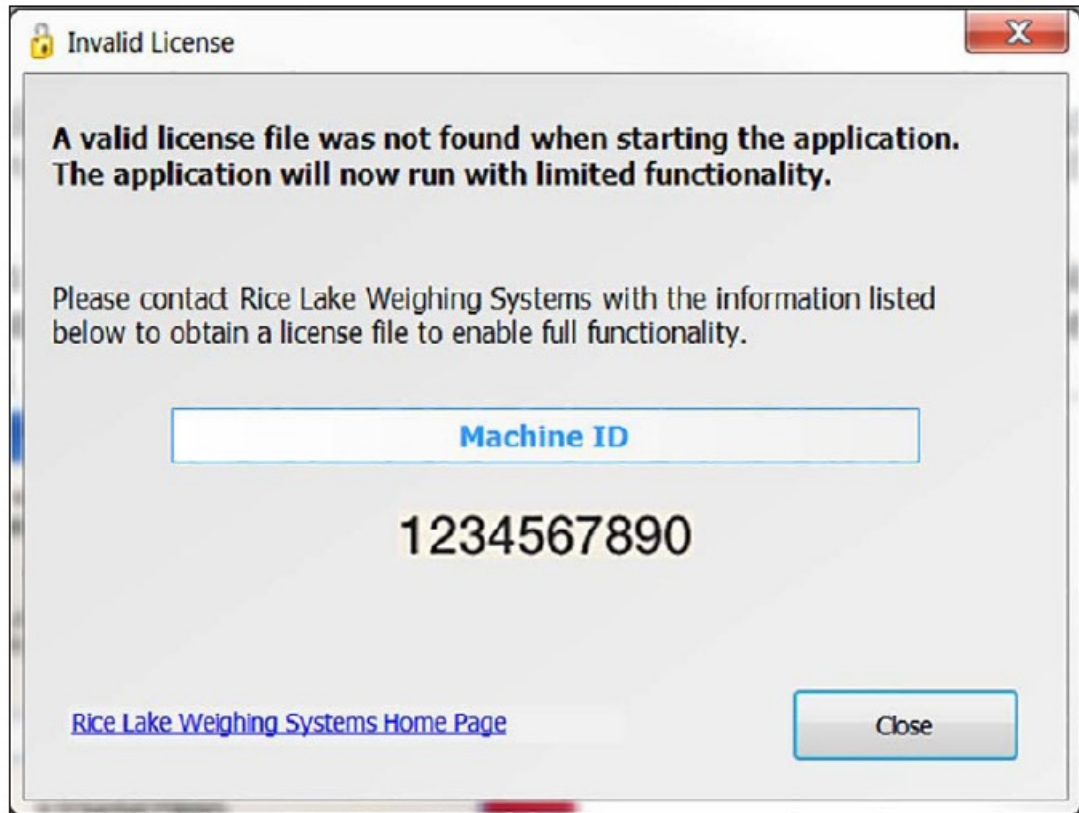
OnTrak initially installs in demo mode and a machine ID number is displayed. Record this number, it must be provided when contacting Rice Lake Weighing Systems to unlock the program. Once unlocked all of its features will be available.

1. Call Rice Lake Weighing Systems' sales or tech support at 800-472-6703 to purchase the full version of OnTrak.
2. Provide them with the sales order number and machine ID number. Then a license file will be provided.
3. Place this file in the installation directory, typically C:\Program Files\Rice Lake Weighing Systems\OnTrak

unless a different location was specified during installation.

4. Reopen the OnTrak program. Once the license file is in the correct location the full version of OnTrak will be unlocked.


**IMPORTANT:** The license file is specific to the PC it is installed on. Each PC required to run the program must have its own separate purchased license file.







*Figure 4. Machine ID*

© Rice Lake Weighing Systems Content subject to change without notice. 230 W. Coleman St. • Rice Lake, WI 54868 • USA U.S. 800-472-6703 • Canada/Mexico 800-321-6703 • International 715-234-9171 • Europe +31 (0)26 472 1319 [www.ricelake.com](http://www.ricelake.com)

## Documents / Resources

	<a href="#">RICE LAKE OnTrak Truck Scale Data Management Program</a> [pdf] Installation Guide OnTrak Truck Scale Data Management Program, Scale Data Management Program, Data Management Program, Management Program, Program
---	--

## References

-  [Rice Lake Weighing Systems](#)
-  [Manuals | Rice Lake Weighing Systems](#)
-  [Warranties](#)
-  [Rice Lake Weighing Systems](#)

-  [Manuals | Rice Lake Weighing Systems](#)

Manuals+.