



RICE LAKE LaserLight 3 Remote Display User Guide

[Home](#) » [RICE LAKE](#) » RICE LAKE LaserLight 3 Remote Display User Guide 



This document describes how to set up the LaserLight3 to operate as a remote display.



Manuals and additional resources are available from the Rice Lake Weighing Systems website at www.ricelake.com

Warranty information can be found on the website at www.ricelake.com/warranties



NOTE: For more information about LaserLight3, see LaserLight3 Remote Display Technical Manual (PN 214748).

Contents

- [1 Preliminary Tasks](#)
- [2 Cable Connection](#)
- [3 Software Configuration](#)
- [4 Automatic Baud Configuration](#)
- [5 Documents / Resources](#)
 - [5.1 References](#)
- [6 Related Posts](#)

Preliminary Tasks

- Unpack and visually inspect the LaserLight3 for damage. If parts were damaged in shipment, notify Rice Lake Weighing Systems and the shipper immediately.
- Mount LaserLight3 with included mounting bracket.

Cable Connection

Connect data communication from an indicator to the CPU board..



NOTE: If using factory installed Wi-Fi communication, see addendum PN 214366 for configuration.



WARNING: The LaserLight3 has no on/off switch. Before opening the unit, ensure the power cord is disconnected from the power outlet.

Use a ground wrist strap to protect components from electrostatic discharge (ESD) when working inside the enclosure.

1. Unplug LaserLight3 from power source.
2. Loosen captive thumbscrews then open enclosure front door.
3. Route communication cable from indicator through LaserLight3 cord grip into the enclosure.
4. Connect cable to one of the following communication ports RS-232 (J3), RS-485/422 (J4), Ethernet (J8) or 20 mA (J11), while adhering to port pin assignment (Figure 1). Coordinate software settings with the installed wiring.



NOTE: The LaserLight3 parts kit includes four, five and six pin connectors to facilitate connection with the CPU board ports.

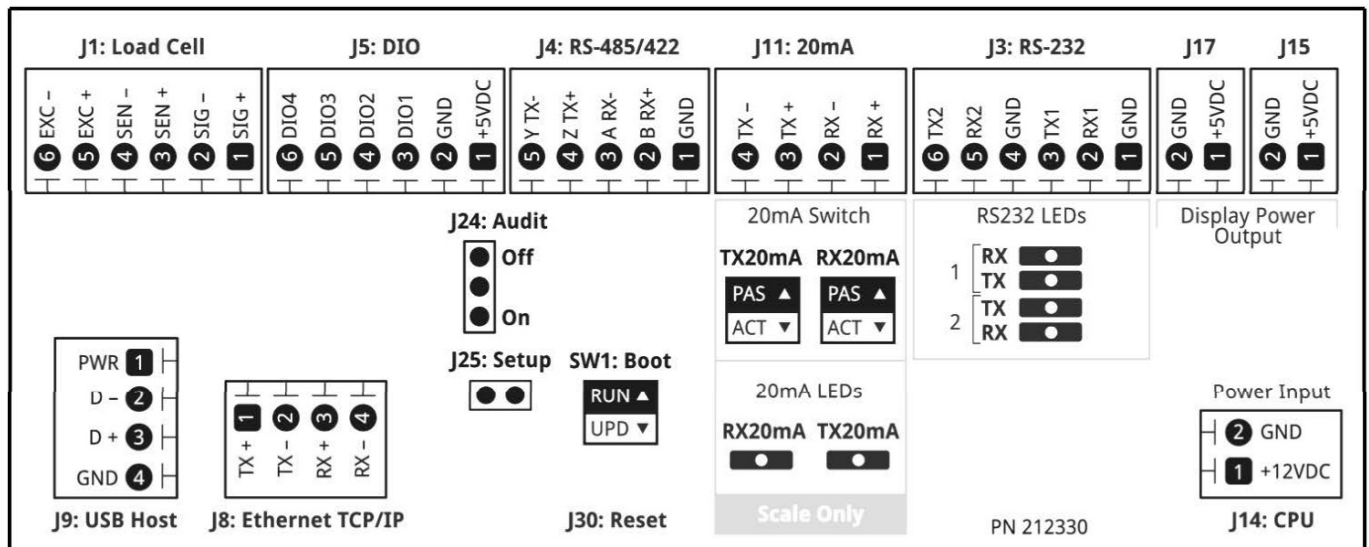


Figure 1. CPU Board Informational Label (PN 212330)

Software Configuration

Access Setup Mode

Press Menu to access the setup menu in setup mode and configure the LaserLight 3. If Setup mode is inaccessible by pressing the Menu Button, perform the following:

1. Plug in LaserLight3 and allow to power on and initialize.
2. Open front door using captive thumbscrews.
3. Perform one of the following to enter Setup mode:
 - Short setup jumper pins (J25) on CPU board
 - Install shunt on audit jumper (J24) pins 2 and 3 on CPU board (enables Audit Trail mode and allows Setup access from Menu) and then press the Menu button

4. Close front door and secure with captive thumbscrews.

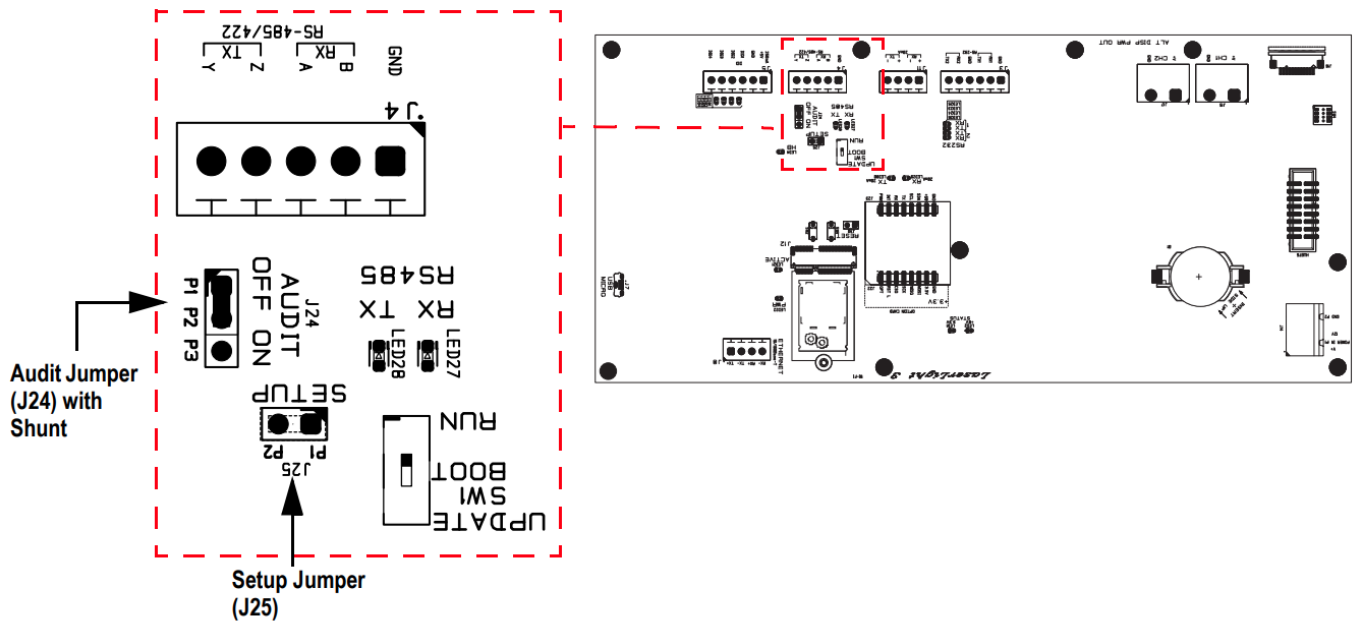


Figure 2. Setup Mode Jumper

CPU Board Jumper	Function	Application
J24	Audit Trail Off	Install shunt on pins 1 and 2
	Audit Trail On	Install shunt on pins 2 and 3
J25	Setup	Short pins 1 and 2 momentarily

Configure Display Type

The Type parameter in the Dsplay (Display) menu has three options to set the information that appears on the display. Set the Type parameter as:

- Legacy (annunciators along the bottom)
- Standard (annunciators along the right side)

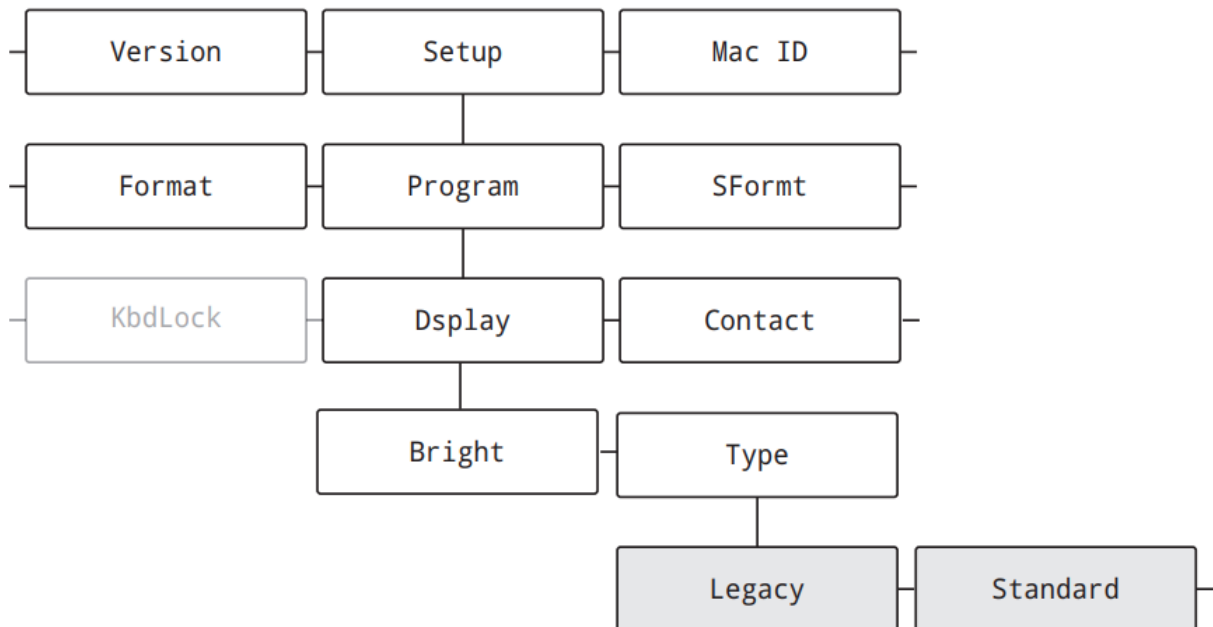


Figure 3. Menu Path for Type Parameter

Automatic Baud Configuration

The Auto (Automatic) baud configuration cycles through serial communication protocol (RS-232, RS-485/422 and 20 mA) baud settings (baud rate, bits and stop bits) until it establishes a serial connection.

Set the Auto setting for the Baud parameter of the communication protocol used.

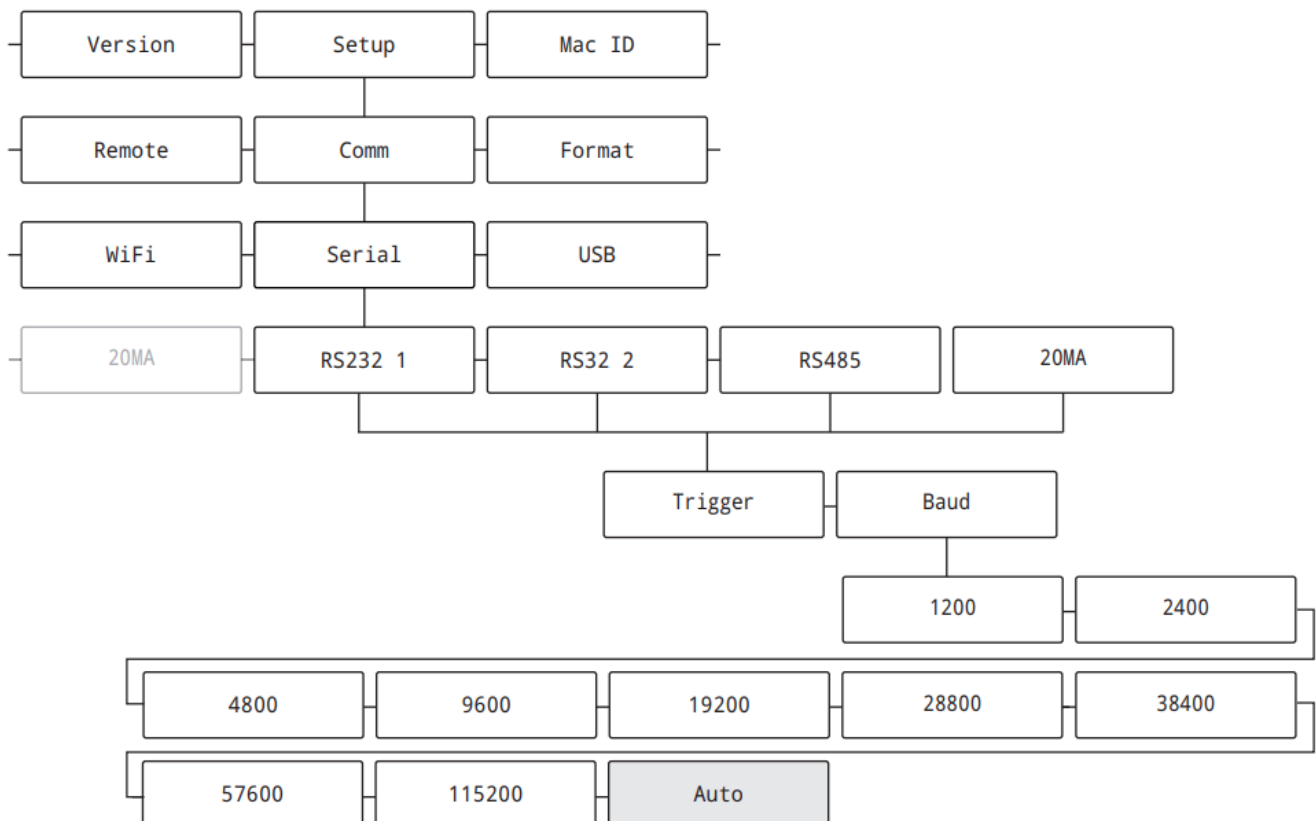


Figure 4. Menu Path for Baud Parameter

Auto-Learn and Data String Recognition

Auto-Learn examines the data stream sent from the connected indicator and determines the data settings and format used by the indicator. Auto-Learn is capable of recognizing several common data string formats used in the weighing industry. If enabled, LaserLight3 attempts to learn the incoming data stream when it is powered on, when the data stream starts or when the data stream is paused and restarted.

Set the used communication protocol (RS-232, RS-485/422, 20 mA, Ethernet or Wi-Fi) Trigger parameter as RmtIn (Remote In) to enable Auto-Learn.



NOTE: It is suggested to only configure one communication protocol as Remote In. If more than one communication protocol is configured as Remote In, LaserLight3 uses the first configured communication protocol that occurs in the system menu. For example, if RS232-2 and 20mA were set as Remote In, RS232-2 would be used as it occurs before 20MA in the system menu.

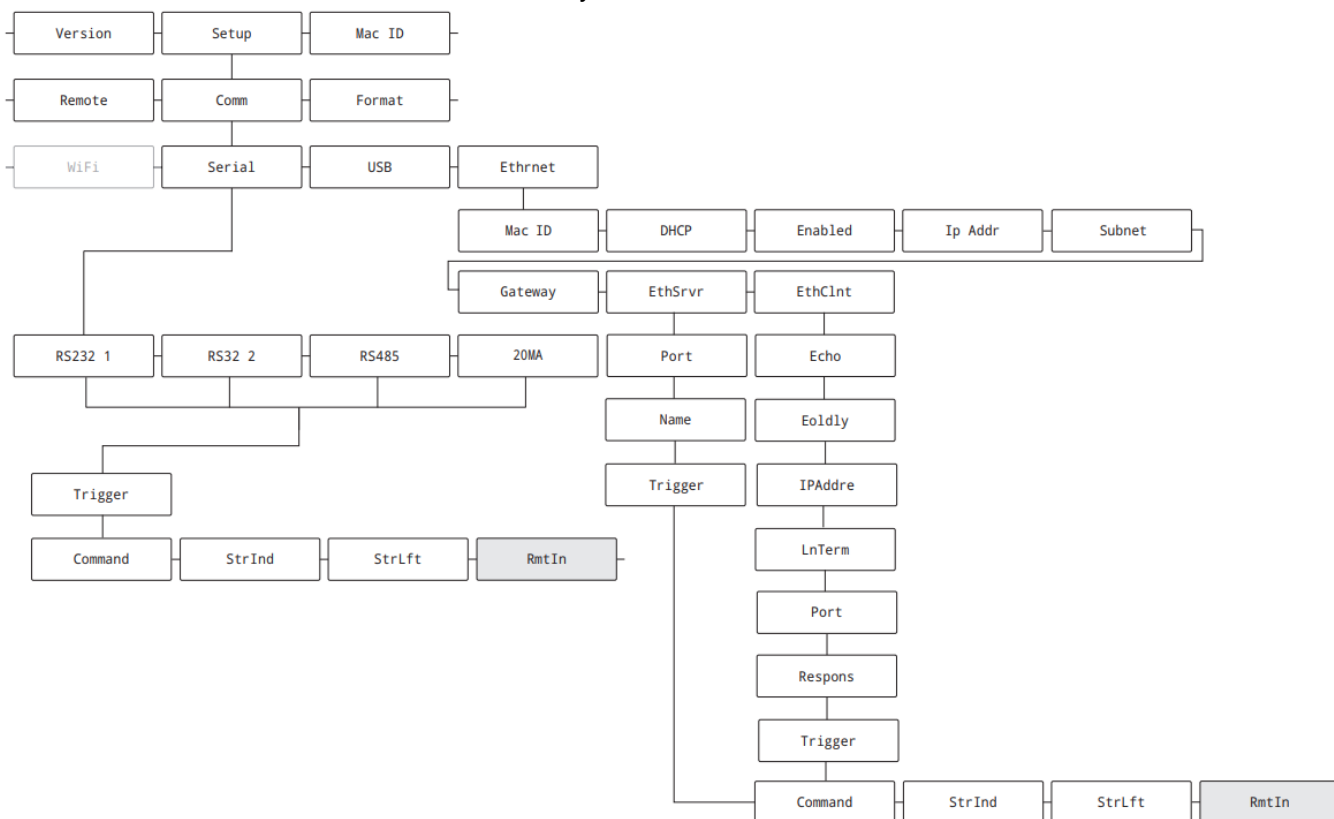


Figure 5. Menu Paths for Remote In Parameters

NOTE: If the text NODATA appears, verify connection from the indicator to LaserLight3.

If data does not display, ensure data stream is set to transmit from indicator.

Auto-Learn mode may be bypassed by using Manual mode.

If OvrRng (Over Range) displays after the Auto-Learn process parses data, then the weightment value sent is beyond the capabilities of the display (six characters). Manual mode can frequently resolve character quantity issues.

If the LaserLight3 does not match a data format, it automatically attempts to parse the weight, units, mode, status and weight data out of frame. If a valid weight is not found, manual mode must be used to configure LaserLight3. For more information about Manual mode see LaserLight3 Remote Display Technical Manual (PN 214748).



© Rice Lake Weighing Systems Specifications subject to change without notice.

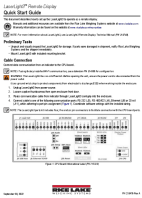
230 W. Coleman St. • Rice Lake, WI 54868 • USA

U.S. 800-472-6703 • Canada/Mexico 800-321-6703 • International 715-234-9171 • Europe +31 (0)26 472 1319

September 30, 2022

www.ricelake.com

PN 215476 Rev A



[RICE LAKE LaserLight 3 Remote Display](#) [pdf] User Guide

LaserLight 3 Remote Display, LaserLight 3, Remote Display, Display

References

- [Rice Lake Weighing Systems](#)
- [Rice Lake Weighing Systems](#)
- [Warranties](#)
- [Rice Lake Weighing Systems](#)

[Manuals+](#)