



RICE LAKE Go-Between Data Capture and Storage User Manual

[Home](#) » [RICE LAKE](#) » RICE LAKE Go-Between Data Capture and Storage User Manual 

RICE LAKE Go-Between Data Capture and Storage User Manual



Contents

- [1 Installation and Operation](#)
- [2 Introduction](#)
- [3 Enclosures](#)
- [4 Wiring Schematics](#)
- [5 Communication Details](#)
- [6 Go-Between Troubleshooting](#)
- [7 Documents / Resources](#)
 - [7.1 References](#)
- [8 Related Posts](#)

Installation and Operation

This document illustrates the Go-Between being installed on an indicator; however, virtually any device with a serial output and print data string will function with the unit.



Electric Shock Hazard

Before opening the device enclosure, ensure the power cord is disconnected from the power outlet.

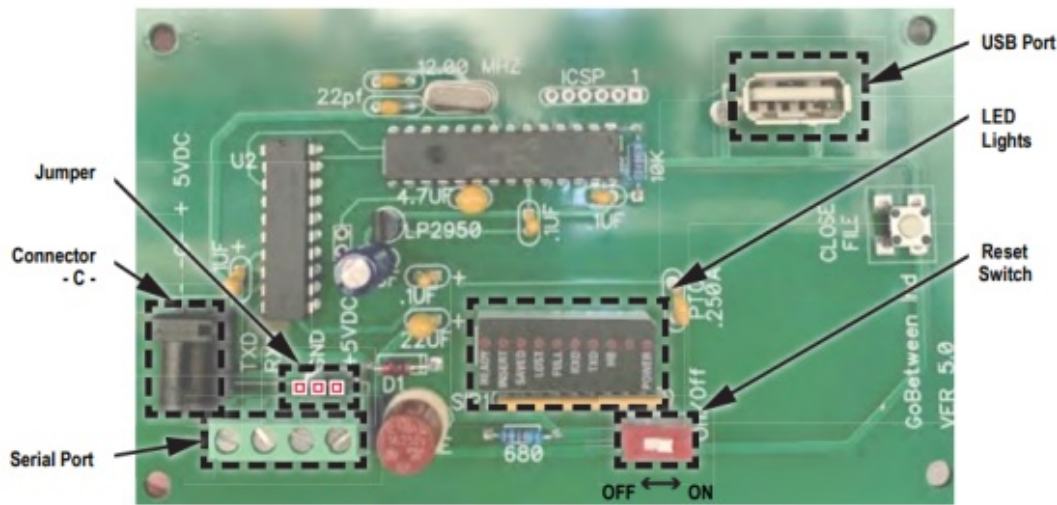


Figure 1. Stand-Alone and Industrial Enclosure CPU Board

Introduction

The Go-Between is connected to the serial port of a source device and collects print data on a USB flash drive. The GoBetween can be wired as the data terminus or as a relay to a printer.

Enclosures

The Go-Between is available in 3 enclosure types:

- Stand-alone board
- Industrial Enclosure
- Desktop Enclosure

Capturing Data

Once properly installed, the Go-Between device will automatically capture data when the source's print command is executed. Make sure the source device's print format is configured to output the data to the connected serial connection.

Using a Flash Drive

The Go-Between device captures data and stores it on a USB flash drive. Make sure the drive is formatted in the FAT file system and does not exceed 8 GB. Connect the flash drive to the Go-Between's USB port (See Figure 1).

Wiring Schematics

The Go-Between device must be correctly wired to a power source and serial communication before it will capture data.



Both the power and serial connections must be grounded.

Communication Wiring

Serial communication connection must be wired as in Table 1. Printer/PC connection is optional.

Source/Indicator	Go-Between	Printer/PC
Not Used	TXD	RXD
TXD	RXD	Not Used
GND	GND	GND

Table 1. Go-Between Serial Wiring

Power wiring and Jumper Pin Location

The jumper pin (See Figure 2) on the CPU board (See Figure 1) determines the source of power for the Go-Between. If the Jumper connects Pin #1 and #2, the Go-Between draws power from connector -C- using power adapter PN 154797 as in Figure 3. If the jumper connects Pin #2 and #3, the Go-Between draws power from the +5VDC pin of the serial connector. Power through the serial port can either come from the +5VDC port of the indicator to the +5VDC of the Go-Between as in Figure 4 or an external power supply as in Figure 5. The +5VDC pin is used most often in industrial applications.

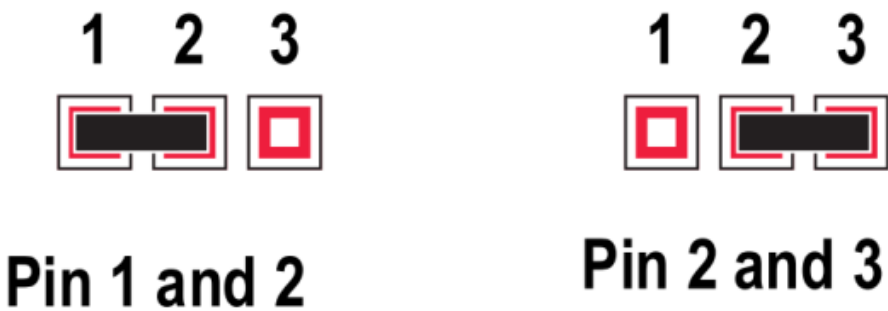


Figure 2. Jumper Pin Positions

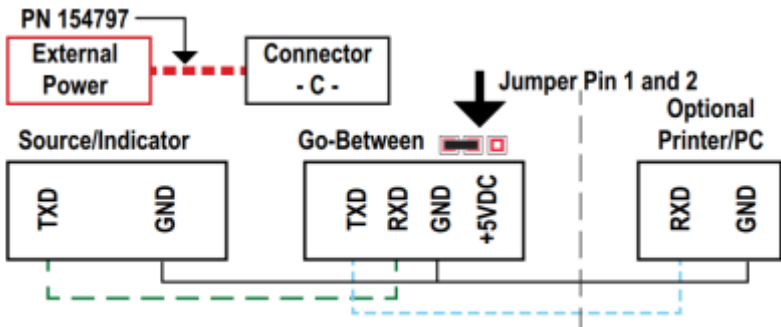


Figure 3. Serial Wiring with Power Coming From an External Power Supply to Connector -C-

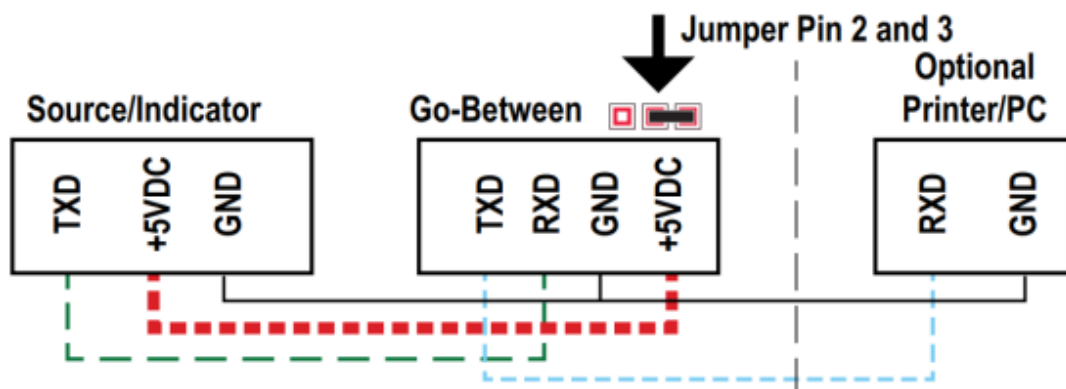


Figure 4. Serial Wiring with Power Coming From the Indicator

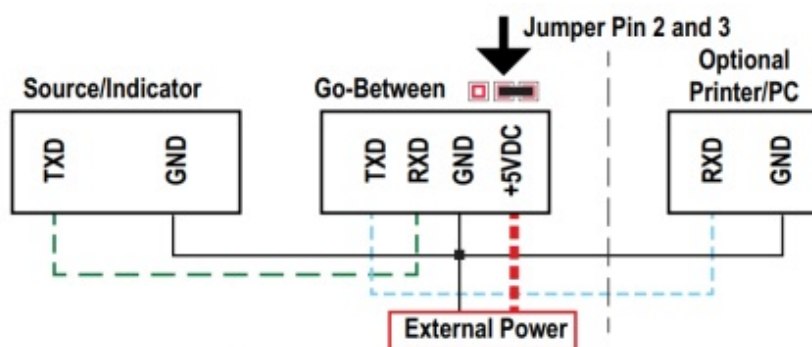


Figure 5. Serial Wiring with Power Coming From an External Power Supply to +5VDC

Communication Details

IMPORTANT

Ensure the source's serial port is configured to 9600 baud rate, 8 bits, no parity, and 1 stop bit.

Transferring Data to PC

Data on the Go-Between device is stored in a .txt file.
Use the following steps to transfer data to your PC:

1. On the Go-Between, press Save.
2. Disconnect the flash drive from the Go-Between's USB port.
3. Connect the flash drive to the PC's USB port.
4. Navigate to the flash drive and open the .txt file to view its contents. It can also be imported into Microsoft® Excel® or other spreadsheet software.



Figure 6. Go-Between Desk Enclosure

Connection Power Supply:

Connection: DB-9 Male Connector

Enclosure: Power Source PN 154797

Transmit from product outputting data to Receive on Go-Between

Ground from product to Ground on Go-Between

Desk enclosure.

Go-Between Troubleshooting

If not able to save onto a USB stick, use the following steps.

1. Remove the USB stick.
2. Turn off power to Go-Between.
3. Turn power back on.
4. Move the reset switch to off (away from the USB stick).
5. Move back to on position.
6. Plug the USB stick in.



Note

The following issues could affect data transfer:

- When reset switch is in the OFF position and power is connected, only LED #1 will be ON.
- When reset switch is turned from OFF to ON, all LED's will be on for several seconds. This is a test mode to let you know that all LEDs are working.
- When receiving DATA, #4 and #5 LEDs will light for a short period of time.
- When #8 LED is on, you can remove the USB drive.
- If you want to remove the USB drive before #8 LED lights, press the Close File button and wait for the #8 LED to be ON before removing the USB drive.

Change the Baudrate or Autosave Time

To change the Baudrate or the Autosave time the user would need to save a file named config.txt on the USB memory stick that will be used to save the received data from the serial port. Text file must read:

BAUDRATE:

AUTOSAVE:

For example:

BAUDRATE: 19200

AUTOSAVE: 20

Baud rate is set to 19200 and autosave time to 20 seconds.

The defaults are BAUDRATE: 9800 and AUTOSAVE: 8

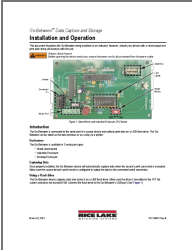


- If a new USB memory stick is inserted with a config.txt file with different baud rate and auto save values, those values will immediately be changed.
- If the Go-Between's power is cycled and no USB stick with a config.txt file is inserted then the default values will be applied.

© Rice Lake Weighing Systems
Specifications subject to change without notice.

Rice Lake Weighing Systems is an ISO 9001 registered company.
230 W. Coleman St.
Rice Lake, WI 54868
USA
U.S. 800-472-6703
Canada/Mexico 800-321-6703
International 715-234-9171
Europe +31 (0)26 472 1319

Documents / Resources

	RICE LAKE Go-Between Data Capture and Storage [pdf] User Manual Go-Between Data Capture and Storage
---	--

References

-  [Rice Lake Weighing Systems](#)
-  [Rice Lake Weighing Systems](#)

Manuals+.