



## RICE LAKE CB-3 Concrete Batch Controller Owner's Manual

[Home](#) » [RICE LAKE](#) » RICE LAKE CB-3 Concrete Batch Controller Owner's Manual 

### Contents

- 1 RICE LAKE CB-3 Concrete Batch Controller
- 2 Standard Features
- 3 Options
- 4 Specifications
- 5 Warranty
- 6 Part Number/Price
- 7 Options/Accessories
- 8 Documents / Resources
  - 8.1 References
- 9 Related Posts

# RICE LAKE

## RICE LAKE CB-3 Concrete Batch Controller



### Standard Features

- AC operated (battery operation is optional)
- LCD graphic transmissive display for indoor viewing
- Lb/kg/oz/g weight display conversion
- Single- or dual-channel models with serial scale input
- Mix and match platforms with console
- Four setpoint outputs for counting
- Two RS-232 ports for connecting peripherals
- Ethernet TCP/IP
- Scanner input (RS-232)
- PC software utility (Revolution®) for setup
- 150 item memory

## Options

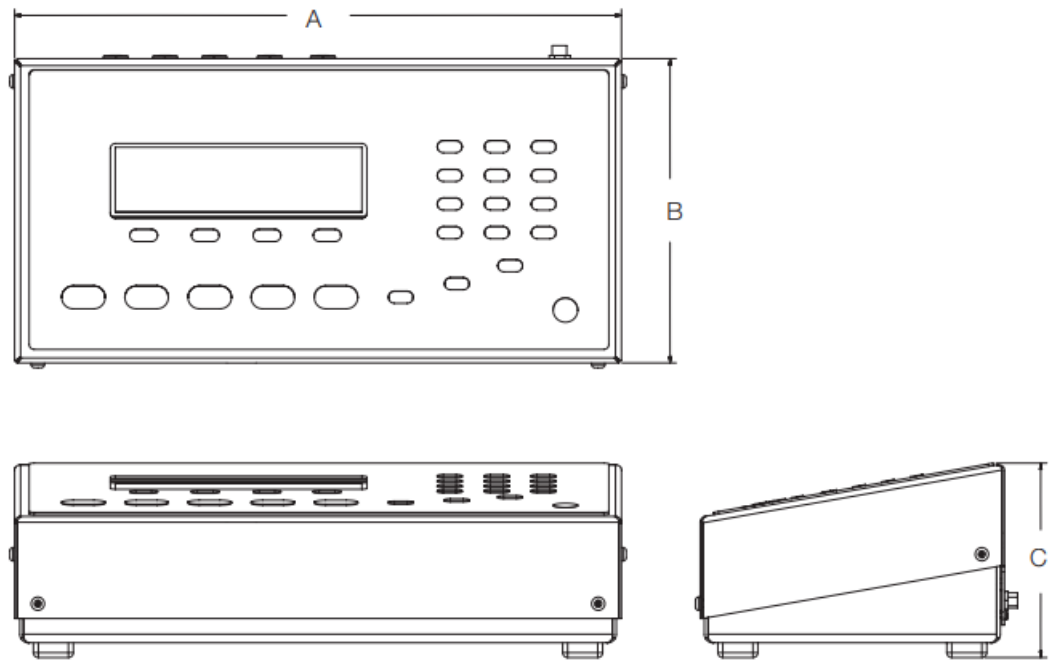
- Battery
- USB for USB keyboard
- WeighVault™ for Counterpart
- DIGI® Scale Base



- Shown with BenchMark® Scale Base and Bracket



Dimensions			
A	12.3 in (312.4 mm)	C	3.94 in (100 mm)
B	6.17 in (156.7 mm)		



## Specifications

### Power Source

- **Input:** 100-240 VAC, 47-63 Hz, 5 watts, U.S. power cord
- **Output:** 9-12 V, 1.5 A max

### Excitation Voltage

- 5 VDC

### Analog Signal Input Range

- 0-4.5 mV/V

### Analog Specifications

- **Grad minimum:** .3  $\mu\text{V/grad}$
- **Input sensitivity:** 1.5  $\mu\text{V/grad}$  recommended
- **Zero adjustment range:** 0-100% or per region settings
- **A/D conversion rate:** 7.5, 15, 30 samples per second Load cells per scale: 8 x 350  $\Omega$ ; 16 x 700  $\Omega$

- **Scale channels:** 1 or 2
- **Linearity:**  $\pm 0.017$  full scale

### **Circuit Protection**

- RFI, EMI, ESD protection

### **Digital I/O**

- Four

### **Display**

- Viewing area: 240 x 64 pixels, transmissive VGA
- liquid crystal display (LCD) with adjustable contrast

### **Keypad**

- 24 buttons, full keypad (alpha numeric)

### **Resolution**

- Weight display resolution: up to
- 100,000 graduations
- Counting resolution: 1/1,000,000

### **Communications and Setpoint**

- Two RS-232 ports support up to 115,200 bps
- 20 mA
- Ethernet port
- Setpoint output

### **Status Annunciators**

- PCS, motion, low battery, insuff, recomp, scale number, gross, net, zero

### **Units of Measure**

- Pounds, kilograms, grams, ounces

### **Prints**

- Standard EPL label format; format is changeable to work with virtually any printer

## **Optional Battery**

- **Type:** Lithium-ion
- **Charge time:** 6 to 8 hours
- **Charge cycles:** 400-1,200
- **Estimated runtime:** 24-32 hours with one 350  $\Omega$  load cell base

## **Operating Temperature**

- 32° F to 104° F (0° C to 40° C)

## **Operating Humidity**

- 85%

## **Physical Dimensions**

- Indicator only (L x W x H): 12.25 x 6.25 x 4.0 in
- (311.15 x 158.75 x 101.6 mm)

## **Warranty**

- Two-year limited warranty

## **Approvals:**

- NTEP CC 12-110
- CE
- UL listed
- Measurement Canada

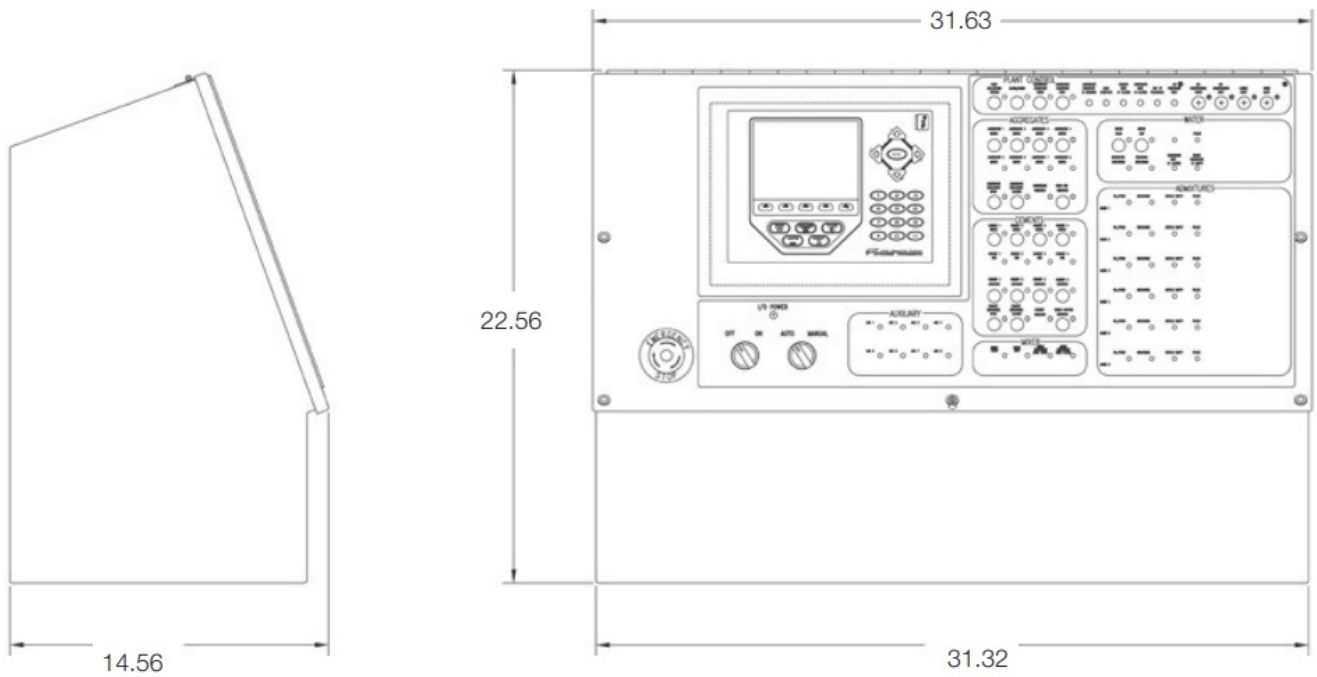
## **Part Number/Price**

<b>Part#</b>	<b>Description</b>	<b>Est. Weight</b>	<b>Price</b>
<b>177746 *</b>	CB-3 concrete batching controller, metered water, PC included	180 lb	\$22,500.00
<b>177747 *</b>	CB-3 concrete batching controller, weighed water, PC included	180 lb	\$22,995.00
<b>FLD-INST ALL</b>	Factory field installation required (minimum 3 days on site)		\$1,395.00 per day
<b>FLD-INST ALLSA</b>	Factory field installation, Saturday		\$2,095.00
<b>FLD-INST ALLSU</b>	Factory field installation, Sunday		\$2,790.00

#### **Options/Accessories**

<b>Part #</b>	<b>Description</b>	<b>Price</b>
<b>175877</b>	Upgrade kit CB-2 to CB-3, PC included	\$9,445.00
<b>179209</b>	Accessory kit (includes monitor, keyboard, USB hub and mouse)	\$302.00
<b>179210</b>	Monitor, Acer	\$240.00
<b>179211</b>	Keyboard, Microsoft	\$45.00
<b>179212</b>	Mouse, Microsoft	\$42.00
<b>185667</b>	USB Hub	\$13.95
<b>186277</b>	Wireless USB adapter WI-FI	\$60.00
<b>196700</b>	4 Additional Admix controller	Consult

Completed questionnaire required prior to ordering this system. Questionnaire available at [www.ricelake.com/resources/product-questionnaires](http://www.ricelake.com/resources/product-questionnaires)



- *CB-3 Ticket Output*

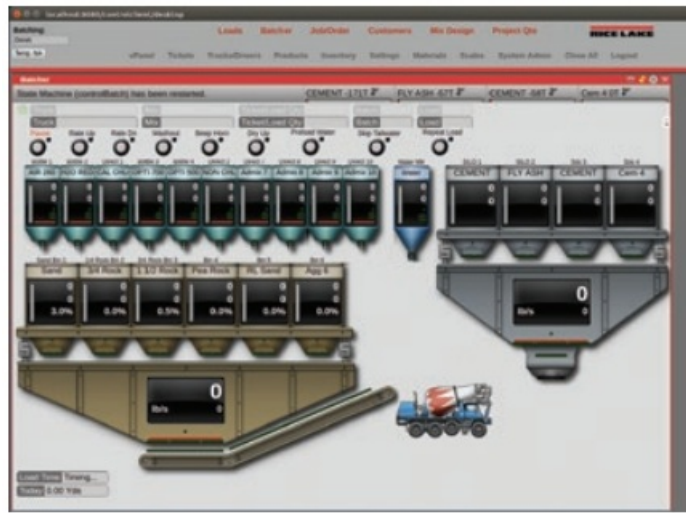


- *CB-3 Truck Monitoring Screen*



- *CB-3 Batcher Screen*

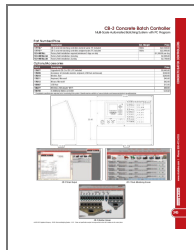




An ISO 9001 Registered Company © 2021 Rice Lake Weighing Systems 01/21 Prices and specifications subject to change without notice. Visit [ricelake.com](http://ricelake.com) for current prices.

[www.ricelake.com](http://www.ricelake.com) | Phone: 800-472-6703

## Documents / Resources



[RICE LAKE CB-3 Concrete Batch Controller](#) [pdf] Owner's Manual  
CB-3 Concrete Batch Controller, Batch Controller, CB-3 Concrete Controller, CB-3 Controller, C  
ontroller, Multi-Scale Automated Batching System with PC Program

## References

- [Product Questionnaires](#)

Manuals+.