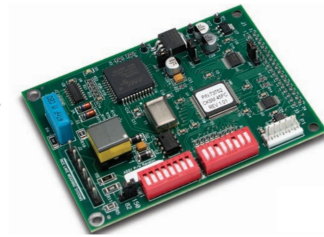


RICE LAKE

RICE LAKE 68539
Remote I/O Interface,
DeviceNet Interface



RICE LAKE 68539 Remote I/O Interface, DeviceNet Interface Owner's Manual

[Home](#) » [RICE LAKE](#) » RICE LAKE 68539 Remote I/O Interface, DeviceNet Interface Owner's Manual 

Contents

- [1 RICE LAKE 68539 Remote I/O Interface, DeviceNet Interface](#)
- [2 Standard Features](#)
- [3 Specifications](#)
- [4 DeviceNet™ Interface](#)
- [5 Options/Accessories](#)
- [6 Documents / Resources](#)
 - [6.1 References](#)
- [7 Related Posts](#)

RICE LAKE®

RICE LAKE 68539 Remote I/O Interface, DeviceNet Interface



FIELDBUS CARDS

R mote I/O Interface
720i™/920i®

Standard Features

- 115 or 230 VAC operation
- Discrete data transfer
- Block data transfer
- Onboard diagnostic LED

Specifications

Power:

5 VDC, 140 mA

Communication Ports:

- Twin axial cable attachment to network at 57.6, 115.2 or 230.4 Kbps
- Update rate is dependent on the configured baud rate and the number of network modes

Fieldbus Interface:

- Pluggable screw connector

Diagnostic LED:

- Link status and module status

Dimensions

- 2.13 × 3.38 × 0.59 in
- (86 × 54 × 15 mm)

Temperature Range

- 14 °F to 158 °F (-10 °C to 70 °C)

Part Number/Price (Limited Supply)

Part #	Description	Est. Weight	Price
68539	Allen-Bradley remote I/O (internal), for 720i/920i indicators	3 lb	Consult

Options/Accessories

Part #	Description	Price
69950	Additional operating manual	Consult

FIELD BUS CARDS

DeviceNet™ Interface

720i™/920i®



PN 68541

Part Number/Price

Part #	Description	Est. Weight	Price
68541	DeviceNet interface kit for 720i/920i indicators	3 lb	Consult

Options/Accessories

Part #	Description	Price
69949	Additional operating manual	Consult

Standard Features

- Compact size for internal installation in 720 and 920i indicators
- Polled I/O connection
- 125 Kbps, 250 Kbps, and 500 Kbps baud rate
- Onboard LED diagnostics
- Floating-point commands support decimal points

Specifications

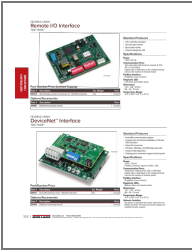
- Power: 5 VDC, 270 mA
- Fieldbus connector requires 24 VDC, $\pm 10\%$
- Communication Ports: Twisted-pair cabling at 125, 250, or 500 Kbps Update rate is dependent on the configured baud rate and the number of network modes
- Fieldbus Interface: Pluggable screw connector

- Diagnostic LEDs: Module status and network status
- Dimensions: 2.13 × 3.38 × 0.59 in (86 × 54 × 15 mm)
- Temperature Range: 14 °F to 158 °F (-10 °C to 70 °C)
- Galvanic Isolation: Bus power is separated from other electronics via DC/DC converter. The send and receive signals are isolated via opto couplers.

www.ricelake.com | Phone: [800-472-6703](tel:800-472-6703)

An ISO 9001:2015 Accredited Company © 2024 Rice Lake Weighing Systems 1/24 Prices and specifications subject to change without notice. Visit ricelake.com for current prices.

Documents / Resources

	<p>RICE LAKE 68539 Remote I/O Interface, DeviceNet Interface [pdf] Owner's Manual 68539 Remote IO Interface DeviceNet Interface, 68539, Remote IO Interface DeviceNet Interface, Interface DeviceNet Interface, DeviceNet Interface, Interface</p>
---	--

References

- [User Manual](#)

[Manuals+](#), [Privacy Policy](#)

This website is an independent publication and is neither affiliated with nor endorsed by any of the trademark owners. The "Bluetooth®" word mark and logos are registered trademarks owned by Bluetooth SIG, Inc. The "Wi-Fi®" word mark and logos are registered trademarks owned by the Wi-Fi Alliance. Any use of these marks on this website does not imply any affiliation with or endorsement.