



# RICE LAKE 682 Synergy Plus Indicator Configuring Second Generation CPU Boards User Guide

[Home](#) » [RICE LAKE](#) » RICE LAKE 682 Synergy Plus Indicator Configuring Second Generation CPU Boards User Guide 

## Contents

- [1 RICE LAKE 682 Synergy Plus Indicator Configuring Second-Generation CPU Boards](#)
- [2 Product Information](#)
- [3 Product Usage Instructions](#)
- [4 FAQ](#)
- [5 Configuring Second-Generation CPU Boards](#)
- [6 Documents / Resources](#)
  - [6.1 References](#)
- [7 Related Posts](#)



**RICE LAKE 682 Synergy Plus Indicator Configuring Second-Generation CPU Boards**



## Product Information

The 682 Synergy Plus Indicator is a weighing scale indicator manufactured by Rice Lake Weighing Systems. It is designed to display weight measurements accurately and efficiently. The indicator features second-generation CPU boards that require configuring through the installation of jumper wires for 4-wire load cell connections.

## Specifications

- **Model:** 682 Synergy Plus Indicator
- **Manufacturer:** Rice Lake Weighing Systems
- **Generation:** Second Generation
- **Configuration Method:** Jumper wires

## Product Usage Instructions

### Configuring Second-Generation CPU Boards

To configure a second-generation CPU board for a 4-wire connection, follow these steps:

1. Locate the revision sticker on the CPU board. It is typically found near the Mac Address Label and the Option

Card.

2. Identify the generation of the CPU board using Table 1.
3. If it is determined that the CPU board is a second-generation board, proceed to the next step.
4. Install a jumper wire between Exc+ and Sen+ on the CPU board.
5. Install another jumper wire between Exc- and Sen- on the CPU board.

**Table 1: Generation Identification**

Generation	Revision Configuration Method
First Generation	Menu configuration
Second Generation	Jumper wires

### Obtaining Manuals and Warranty Information

For detailed manuals and warranty information, visit the Rice Lake Weighing Systems website:

- Manuals: [www.ricelake.com/manuals](http://www.ricelake.com/manuals)
- Warranty Information: [www.ricelake.com/warranties](http://www.ricelake.com/warranties)

### FAQ

- **Q: How can I identify the generation of my CPU board?**
  - A: You can identify the generation of your CPU board by locating the revision sticker on the board. Refer to Figure 1 and Table 1 for more information.
- **Q: What should I do if the scale does not display weight due to a reference error with the 4-wire load cell connection?**
  - A: If you encounter this issue, follow the solution provided in the user manual. Install jumper wires for the 4-wire load cell connection as described in the product usage instructions section.

### Configuring Second-Generation CPU Boards

**issue:** The scale will not display weight due to a reference error with a 4-wire load cell connection

**Solution:** Install jumper wires for 4-wire load cell connection

First-generation CPU boards have sense switches and are configured through the indicator menu while the second generation does not have sense switches and requires installing jumper wires in 4-wire configuration to avoid errors. Manuals are available from Rice Lake Weighing Systems at [www.ricelake.com/manuals](http://www.ricelake.com/manuals)  
Warranty information is available at [www.ricelake.com/warranties](http://www.ricelake.com/warranties)

Locate the revision sticker on the CPU board as shown in Figure 1.

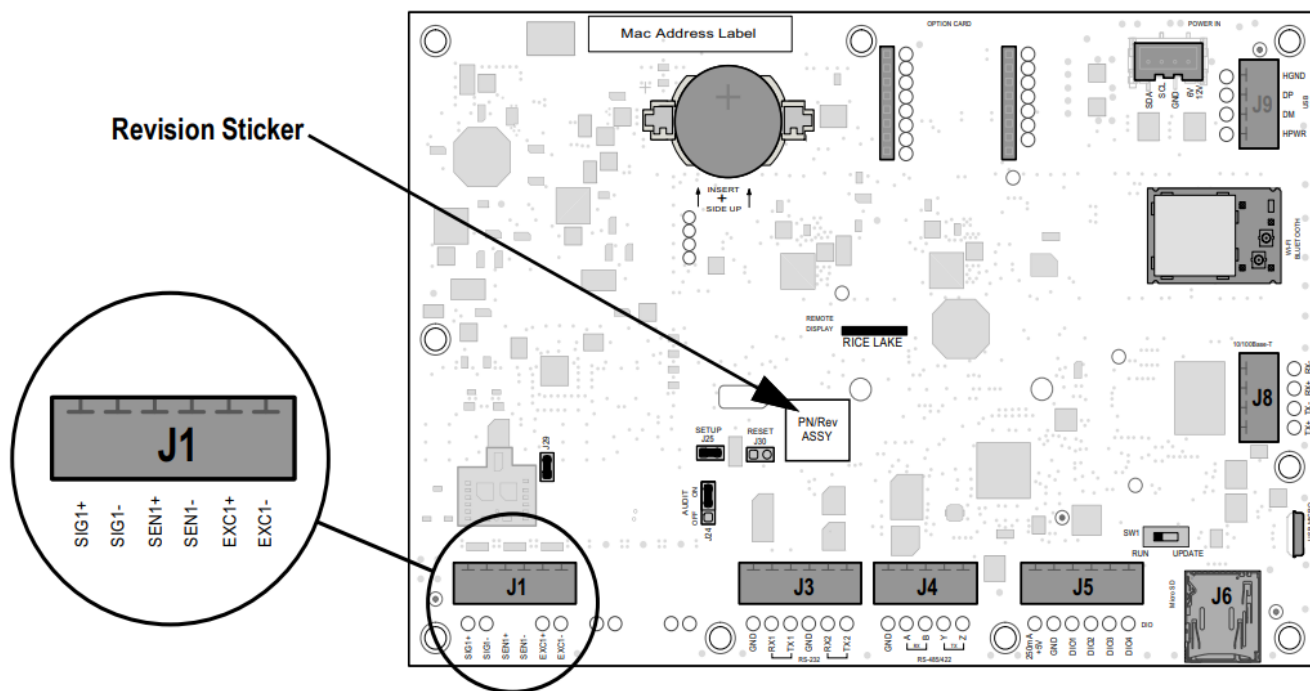


Figure 1. Revision Sticker Location

See Table 1 to identify the CPU board generation.

Generation	Revision	Configuration Method
First Generation	A - J1	Menu configuration
Second Generation	J2	Jumper wires

Table 1. Generation Identification

**IMPORTANT:** To configure a second-generation CPU board for a 4-wire connection, install a jumper wire between Exc+ and Sen+ and another jumper wire between Exc- and Sen-.

- © Rice Lake Weighing Systems
- Content is subject to change without notice
- 230 W. Coleman St.
- Rice Lake, WI 54868
- **USA USA:** 800-472-6703
- International: +1-715-234-9171
- [www.ricelake.com](http://www.ricelake.com)



## [RICE LAKE 682 Synergy Plus Indicator Configuring Second Generation CPU Boards \[pdf\]](#) User Guide

682 Synergy Plus Indicator Configuring Second Generation CPU Boards, 682, Synergy Plus Indicator Configuring Second Generation CPU Boards, Plus Indicator Configuring Second Generation CPU Boards, Configuring Second Generation CPU Boards, Second Generation CPU Boards, Generation CPU Boards

## References

- [Rice Lake Weighing Systems](#)
- [Manuals | Rice Lake Weighing Systems](#)
- [Warranties](#)
- [Manuals | Rice Lake Weighing Systems](#)
- [User Manual](#)

[Manuals+](#), [Privacy Policy](#)

This website is an independent publication and is neither affiliated with nor endorsed by any of the trademark owners. The "Bluetooth®" word mark and logos are registered trademarks owned by Bluetooth SIG, Inc. The "Wi-Fi®" word mark and logos are registered trademarks owned by the Wi-Fi Alliance. Any use of these marks on this website does not imply any affiliation with or endorsement.