

RGBlink B09KZRB79P HDMI Sync Light Controller User Manual

[Home](#) » [RGBlink](#) » RGBlink B09KZRB79P HDMI Sync Light Controller User Manual 

RGBlink B09KZRB79P HDMI Sync Light Controller



Contents

- [1 Quick start](#)
- [2 Install device](#)
- [3 Set up device on TAO X App](#)
- [4 Install light strip](#)
- [5 Packing List](#)
- [6 Specification](#)
- [7 Overview](#)
- [8 Mode Instructions](#)
- [9 Trouble Shooting](#)
- [10 More Information refers to](#)
- [11 Documents / Resources](#)
- [12 Related Posts](#)

Quick start

Scan QR code to view Installation video



Download App



Search 「TAO X」

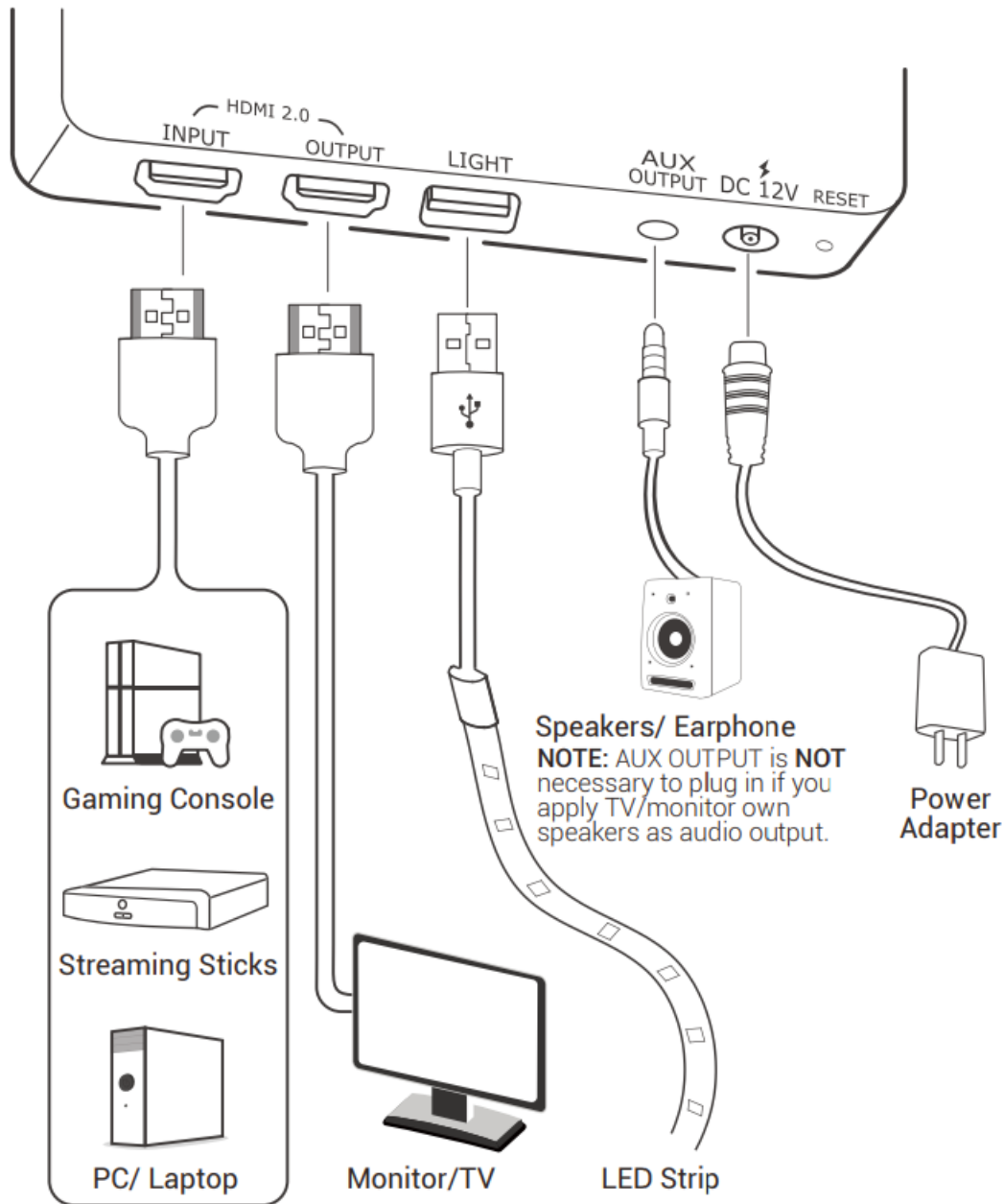
Apple App Store for iOS phone

Google Play for Android phone

During download, let's check next step.

Install device

As shown below, plug in HDMI INPUT and OUTPUT, plug in the USB to LIGHT, plug in power cable to DC 12V.

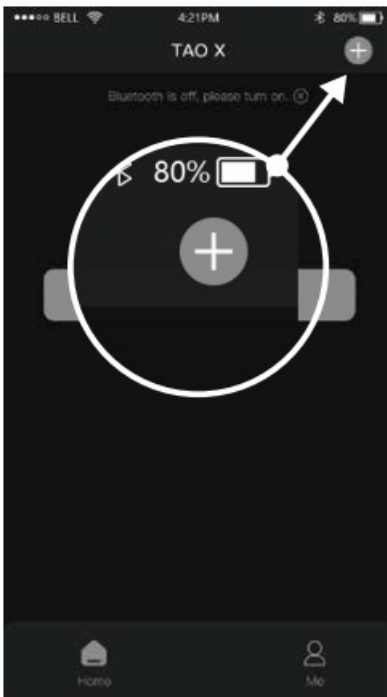


Set up device on TAO X App

Once download, install 「TAO X」App, then open it, Sign up and Log in.

Let's get connected with 「TAO X」the immersion world.

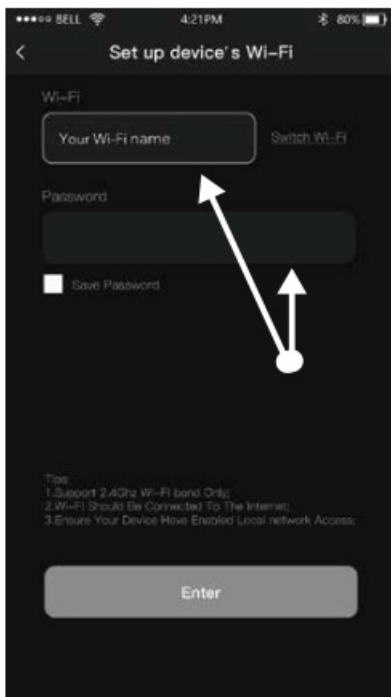
1. Press the Add button on top-right corner.



2. Select the available device shown on 'Device Nearby', and 'Pair'.



3. Type Wi-Fi name and Password. According to network processing, it may take 30~60 sec. to get connected.

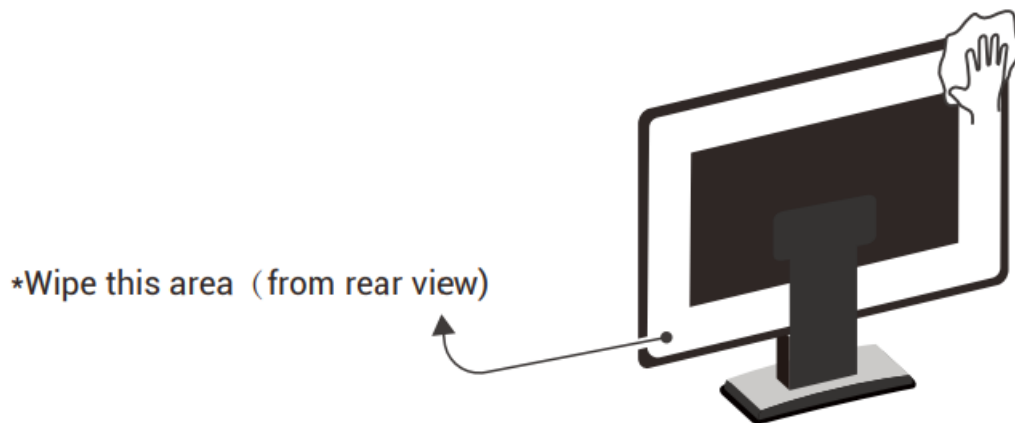


Now, time to play !

If any defect/failure, please check page 7 [V. Trouble Shooting] and/or contact our Facebook page, we are at your service.

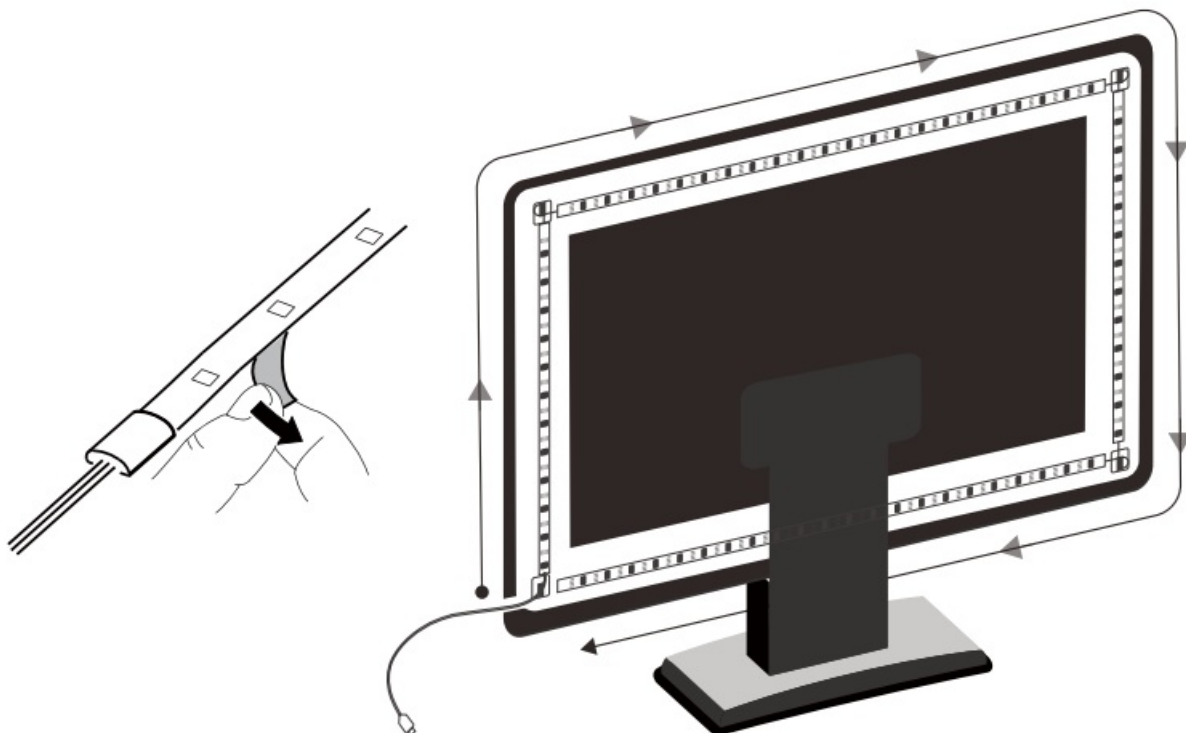
Install light strip

Wipe the rear surface of TV/monitor, wait till dry and clean



Hold the USB cable side, take the shorter section of LED light strip

- start from bottom-left corner (rear-view)
- stick the shorter section from down to up (left side)
- stick the longer section horizontally, from left to right (rear-view)
- stick the rest of LED light strip accordingly
- stick the adhesive hook on 4 side corners to keep the LED light strip



Packing List

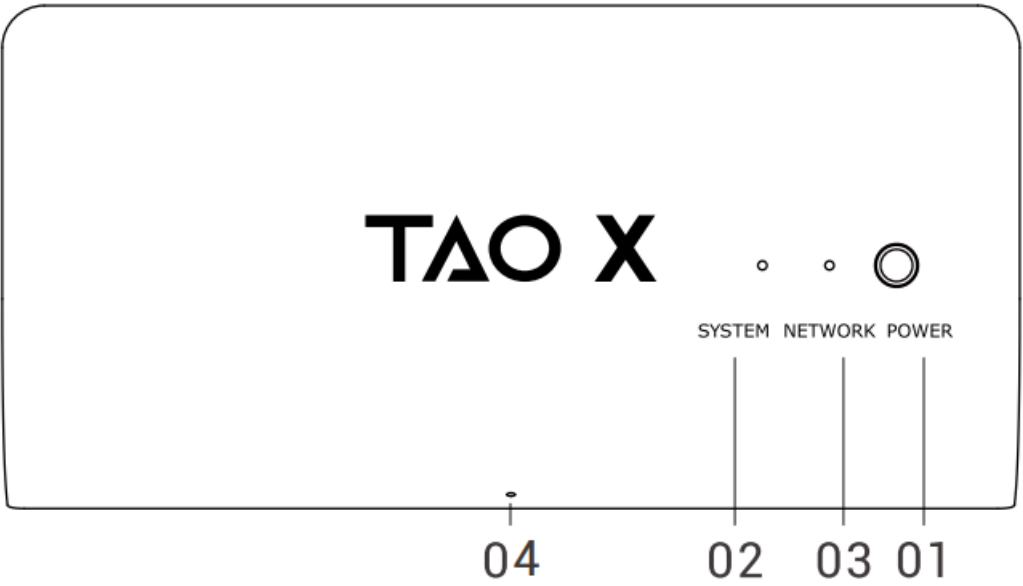
HDMI Sync Light Controller	1
Light Strip	1
Adapter	1
HDMI Cable	1
Adhesive hook	4
User manual	1

Specification

Controller	
Power Input	100-240V AC 50/60Hz
Power Output	12V DC 2.0A
HDMI	HDMI2.0 with HDCP2.2
Audio Output	3.5mm aux
Light strip	
Input	12V DC 2.0A
Length	<ul style="list-style-type: none">○ Vertical section 1'x2○ Horizontal section 1'10"x2○ Vertical section 2'2"x2○ Horizontal section 3'8" x2

Overview

Front View



01-POWER

- Long press and hold for 3 seconds to pair Wi-Fi, NETWORK indicator will blink, and device can be discovered by App)
- Short press to turn on/off light

02-SYSTEM Indicator

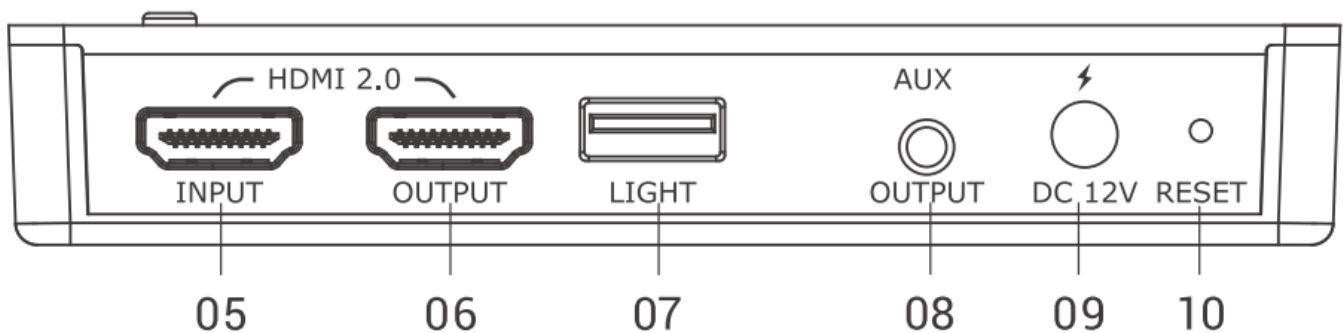
Status	Meaning
Solid light	Powered
Blinking slowly	Device upgrading
Not light	Not powered

03-NETWORK Indicator

Status	Meaning
Solid light	Wi-Fi connected
Blinking slowly	Wi-Fi not connected
Not light	Wi-Fi connecting

04-Microphone

Rear View



- 05-HDMI-INPUT
- 06-HDMI-OUTPUT
- 07-LIGHT
- 08-AUX-OUTPUT
- 09-DC-IN
- 10.Reset : Long press to reset device

Mode Instructions

Video Mode

LED backlight will sync with video on screen

1. Select video mode on App
2. Ensure the 'HDMI-INPUT' and 'HDMI-OUTPUT' is correctly connected (refer to "Install device")
3. Play some video and enjoy the immersion lighting effect

Music Mode

LED backlight will sync with sound from option 1: HDMI sound source or option 2: microphone in front of box

1. Select music mode on App
2. Ensure the 'HDMI-INPUT' and 'HDMI-OUTPUT' is correctly connected (refer to "Install device")
3. Play some music and enjoy the immersion lighting effect

Color Mode

Classic light effect, Static/Breath/Marquee

1. Select Color mode on App
2. Choose the classic mode and color you like, more than 16 million color way to display

Scene Mode

Scene mode for specific moment, Flow/Fire/Read etc

1. Select scene mode on App
2. Create a unique atmosphere with your scene

Trouble Shooting

Q: LED backlight don't work after connecting HDMI Sync Box?

A:

1. Make sure the power is on (Press [POWER] button to turn the light on/off)
2. In video mode, lit when there is no HDMI input
3. Ensure the video output is the appropriate resolution: 720p@50, 60, 1080p@50, 60, 4K@30, 50, 60

Q: Why can't my device connect to the app?

A:

1. Device is ONLY for 2.4Ghz Wi-Fi/hotspot, please check your router settings
2. If there is white-list in your internet router, please add device (M.A.C address) to the white-list


In case is not accessible to Wi-Fi for more than 1 min.

1. Power off, then power on the device
2. Long press [RESET] button on the back of device
3. Restart the App
4. Ensure your iPhone or Android Phone is accessible to the Internet, Bluetooth and location both turning on

More Information refers to

Twitter	@threesheep_tech
Facebook	@threesheep_official
Instagram	@threesheep_tech
YouTube	@threesheep
Pinterest	@threesheep

Documents / Resources

	RGBlink B09KZRB79P HDMI Sync Light Controller [pdf] User Manual B09V7K3P1N, B09KZRB79P, HDMI Sync Light Controller, B09KZRB79P HDMI Sync Light Controller, Sync Light Controller, Light Controller, Controller
---	---

[Manuals+.](#)