

RGA TOPR-000301 Rc Robot With Lights and Sound



RGA TOPR-000301 Rc Robot With Lights and Sound Instruction Manual

[Home](#) » [RGA](#) » RGA TOPR-000301 Rc Robot With Lights and Sound Instruction Manual 

Contents

- [1 RGA TOPR-000301 Rc Robot With Lights and Sound](#)
- [2 Product Information](#)
- [3 Product Usage Instructions:](#)
- [4 PRODUCT DEMO](#)
- [5 Documents / Resources](#)
 - [5.1 References](#)

RGA

RGA TOPR-000301 Rc Robot With Lights and Sound



Product Information

Specifications:

- Model: XYZ-1000
- Dimensions: 10in x 5in x 3in
- Weight: 2 lbs
- Power Source: AC adapter
- Material: Plastic

Product Usage Instructions:

Setup:

1. Place the product on a flat, stable surface.
2. Connect the AC adapter to the power port on the product.
3. Plug the AC adapter into a power outlet.

Operation:

1. Press the power button to turn on the product.

2. Use the control panel to select desired settings.
3. Follow the user manual for specific functions and modes.

Cleaning and Maintenance:

1. Unplug the product before cleaning.
2. Use a damp cloth to wipe the exterior of the product.
3. Avoid using harsh chemicals or abrasive materials.

FAQ:

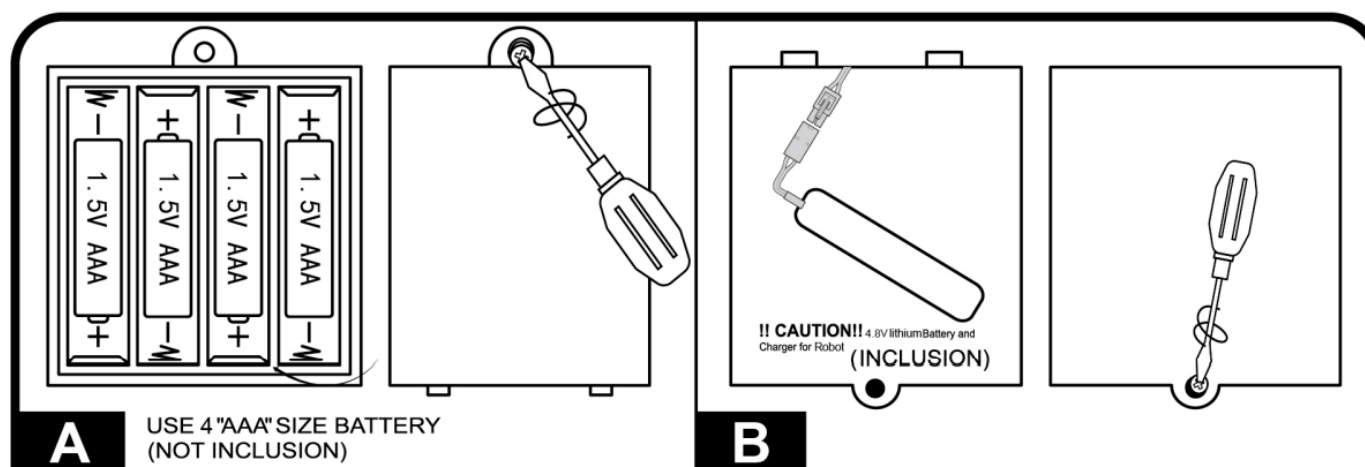
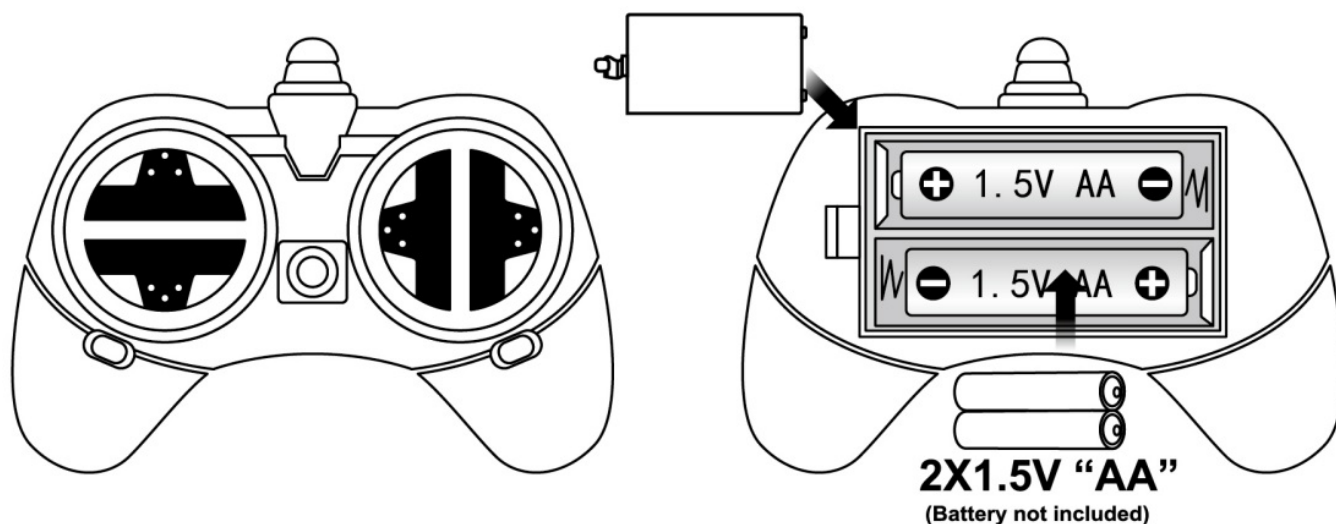
• **Q: Can I use the product without the AC adapter?**

A: No, the product requires the AC adapter for power.

• **Q: How often should I clean the product?**

A: It is recommended to clean the product at least once a month for optimal performance.

BATTERY INSTALLATION FUNCTION



CAUTIONS:

Any improper use of batteries might lead to liquid leakage, heat and splits. Pay attention to the following items:

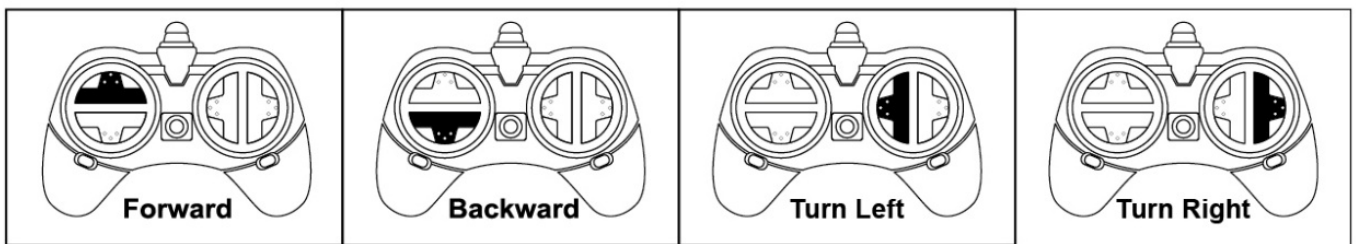
1. Do not use new batteries and old ones at the same time.
2. Do not use batteries of different brands at the same time.

3. Do not install batteries to wrong +or- poles
4. While installing motor parts, push it 30 degrees upward gently with the tip of one finger.

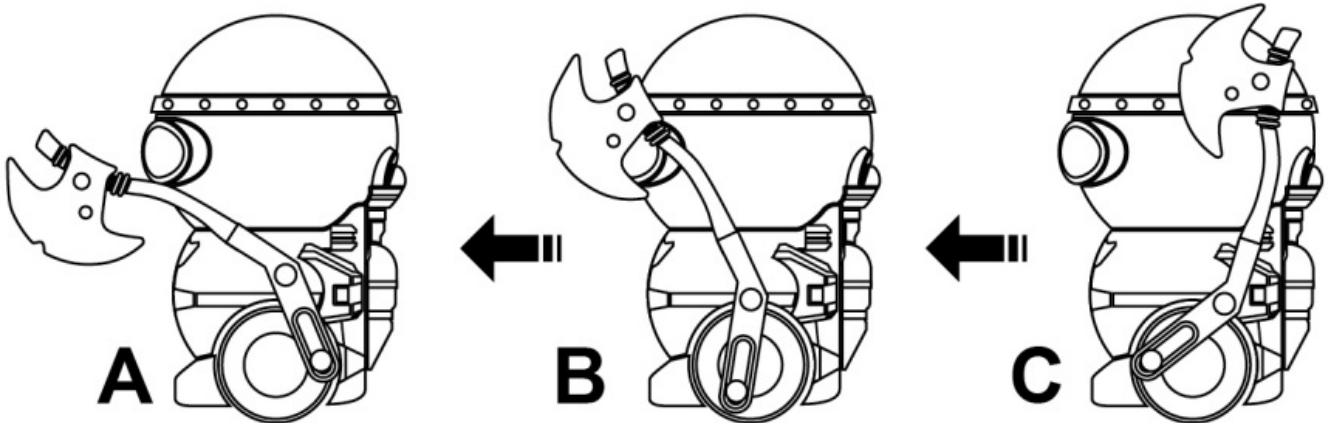
WAY OF USE AND PAY ATTENTION TO

THE FOLLOWINGS:

- Do must let children play under the adult.
- Do not put small parts into the mouth, avoid eating.
- Do not touch the fire, it hasn't a function on ultraviolet radiation.
- Be included in small toys to not suitable under 3 years to play .
- Please take note that the product may vary from the picture and the illustration of the package.
- If the exterior a product the disposition and the specification is changed, excuse us.



PRODUCT DEMO



FCC Caution:

This device complies with part 15 of the FCC Rules. Operation is subject to the following two conditions:

1. This device may not cause harmful interference, and
2. this device must accept any interference received, including interference that may cause undesired operation.

Any changes or modifications not expressly approved by the party responsible for compliance could void the user's authority to operate the equipment.

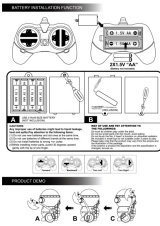
NOTE: This equipment has been tested and found to comply with the limits for a Class B digital device, pursuant to Part 15 of the FCC Rules. These limits are designed to provide reasonable protection against harmful interference in a residential installation. This equipment generates, uses and can radiate radio frequency energy and, if not installed and used in accordance with the instructions, may cause harmful interference to radio

communications. However, there is no guarantee that interference will not occur in a particular installation. If this equipment does cause harmful interference to radio or television reception, which can be determined by turning the equipment off and on, the user is encouraged to try to correct the interference by one or more of the following measures:

- Reorient or relocate the receiving antenna.
- Increase the separation between the equipment and receiver.
- Connect the equipment into an outlet on a circuit different from that to which the receiver is connected.
- Consult the dealer or an experienced radio/TV technician for help.

The device has been evaluated to meet general RF exposure requirement. The device can be used in portable exposure condition without restriction.

Documents / Resources

	<p>RGA TOPR-000301 Rc Robot With Lights and Sound [pdf] Instruction Manual TOPR-000301, 2BBLZ-TOPR-000301, 2BBLZTOPR000301, TOPR-000301 Rc Robot With Lights and Sound, Rc Robot With Lights and Sound, Robot With Lights and Sound, Lights and Sound</p>
--	---

References

- [User Manual](#)

[Manuals+](#), [Privacy Policy](#)

This website is an independent publication and is neither affiliated with nor endorsed by any of the trademark owners. The "Bluetooth®" word mark and logos are registered trademarks owned by Bluetooth SIG, Inc. The "Wi-Fi®" word mark and logos are registered trademarks owned by the Wi-Fi Alliance. Any use of these marks on this website does not imply any affiliation with or endorsement.