



[Home](#) » [RF SOLUTIONS](#) » **rf Solutions QUANTAFOB Remote Control System User Guide** 

## **Contents** [ [hide](#) ]

[1 rf Solutions QUANTAFOB Remote Control System](#)

[2 OVERVIEW](#)

[3 Safety Information](#)

[4 Installation](#)

[5 MAINTENANCE](#)

[6 Programming](#)

[7 Operation](#)

[8 Frequently Asked Questions](#)

[9 Documents / Resources](#)

[9.1 References](#)



## **rf Solutions QUANTAFOB Remote Control System**



## Product Specifications

- **Product Name:** HORNETPRO Remote Control
- **Brand:** RF Solutions Limited
- **Model:** QUANTAFOB Remote Control System
- **Compliance:** Simplified Declaration of Conformity (RED)
- **Frequency:** 433.92MHz

## OVERVIEW



## Safety Information

- Carefully read the following safety information before proceeding with installation, operation, or maintenance of RF Solutions product. Failure to follow these warnings could result in death or serious injury.
- This radio system must not be used in areas where there is a risk of explosion.
- Only qualified personnel should be permitted to access the transmitter and operate the equipment.
- Always follow operating information as well as all applicable safety procedures and requirements.
- You must satisfy the age requirements in your country for operating the equipment.
- Store in a safe place.
- Keep a clear view of the work area at all time before using, check it is safe to do so

## Installation

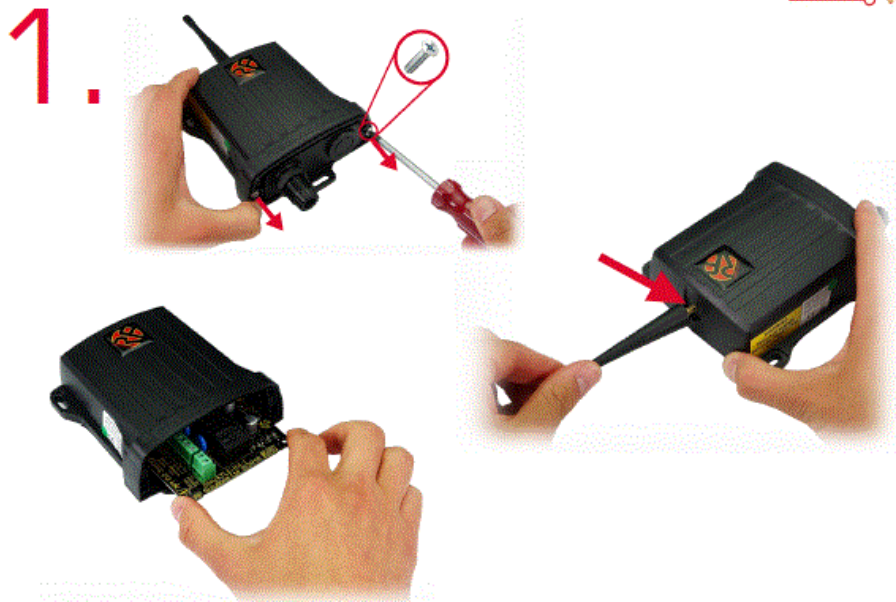
1. Identify the appropriate model based on the part number.
2. Ensure the battery is installed correctly if required.
3. Place the remote control in a location with minimal interference.



## Battery Precautions

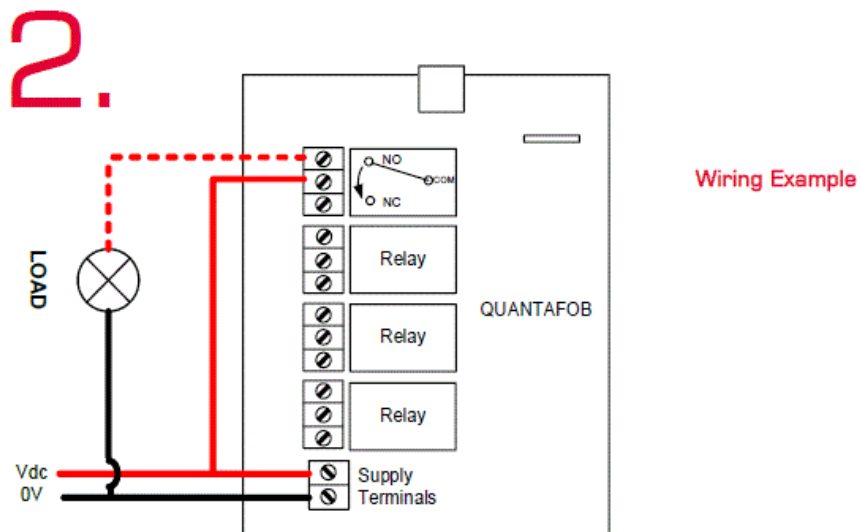
- Risk of explosion if battery is replaced with a battery of an incorrect type.
- Do not short-circuit, disassemble, deform or heat batteries.
- Never attempt to charge a visibly damaged or frozen battery.
- Do not use or charge the battery if it appears to be leaking, deformed or damaged in any way.
- Immediately discontinue use of the battery if, while using, charging, or storing the battery, the battery emits an unusual smell, feels hot, changes color, changes shape, or appears abnormal in any other way.
- Keep batteries out of reach of small children. Should a child swallow a battery, consult a physician immediately.





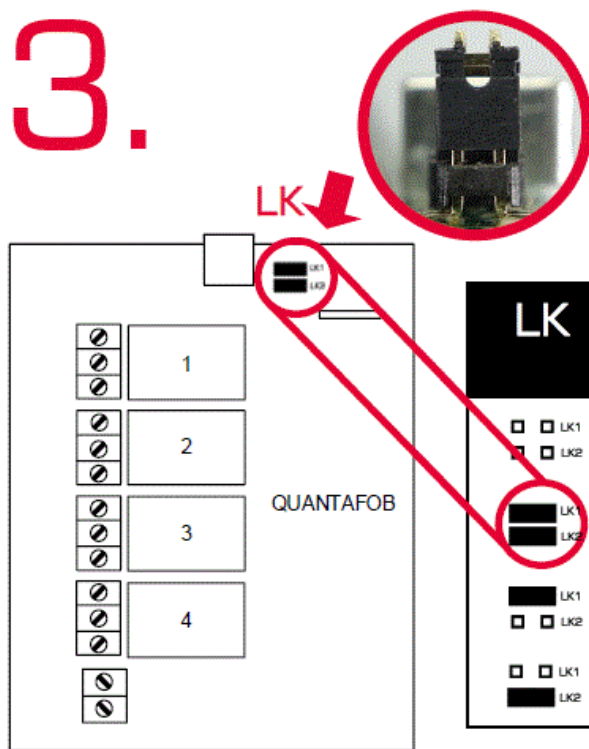
## Programming

1. Refer to the specific programming instructions for your device.
2. Follow the steps to sync the remote control with the target device.



# 3.

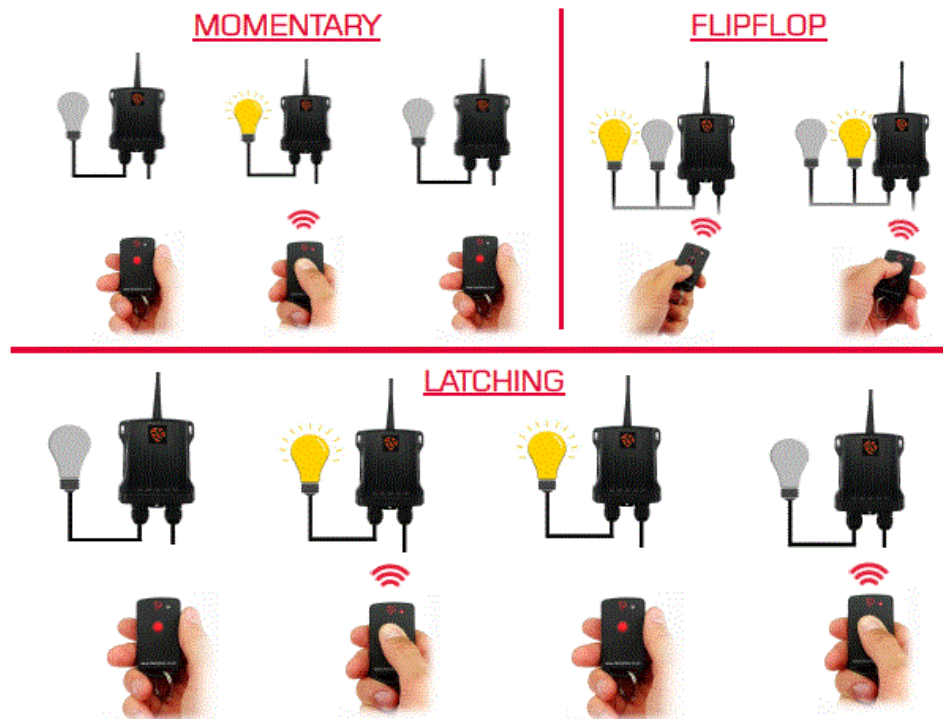
Setting Momentary / Latching / Flipflop



LK	RL1	RL2	RL3	RL4
<input type="checkbox"/> LK1	1/2 SEC	1/2 SEC	1/2 SEC	1/2 SEC
<input type="checkbox"/> LK2	MOMENTARY	MOMENTARY	MOMENTARY	MOMENTARY
<input checked="" type="checkbox"/> LK1	LATCHING	LATCHING	LATCHING	LATCHING
<input checked="" type="checkbox"/> LK2	MOMENTARY	MOMENTARY	MOMENTARY	MOMENTARY
<input type="checkbox"/> LK1	FLIPFLOP		FLIPFLOP	
<input checked="" type="checkbox"/> LK2				

## Operation

1. Press the designated buttons on the remote control to operate the connected device.
2. Ensure proper line of sight between the remote and the receiver for optimal performance.



## Simplified Declaration of Conformity (RED)

Hereby, RF Solutions Limited declares that the radio equipment type defined within this document is in compliance with Directive 2014/53/EU. The full text of the EU declaration



of conformity is available at the following internet address: [www.rfsolutions.co.uk](http://www.rfsolutions.co.uk)

Whilst the information in this document is believed to be correct at the time of issue, RF Solutions Ltd does not accept any liability whatsoever for its accuracy, adequacy or completeness. No express or implied warranty or representation is given relating to the information contained in this document. RF Solutions Ltd reserves the right to make changes and improvements to the product(s) described herein without notice. Buyers and other users should determine for themselves the suitability of any such information or products for their own particular requirements or specification(s). RF Solutions Ltd shall not be liable for any loss or damage caused as a result of user's own determination of how to deploy or use RF Solutions Ltd's products. Use of RF Solutions Ltd products or components in life support and/or safety applications is not authorised except with express written approval. No licenses are created, implicitly or otherwise, under any of RF Solutions Ltd's intellectual property rights. Liability for loss or damage resulting or caused by reliance on the information contained herein or from the use of the product (including liability resulting from negligence or where RF Solutions Ltd was aware of the possibility of such loss or damage arising) is excluded. This will not operate to limit or restrict RF Solutions Ltd's liability for death or personal injury resulting from its negligence.

- **Website:** [www.tcfs-europe.com](http://www.tcfs-europe.com)
- **Email:** [rfsolutions@tcfs-europe.com](mailto:rfsolutions@tcfs-europe.com)

## Frequently Asked Questions

How do I change the battery in the remote control?

To change the battery, locate the battery compartment, remove the old battery, and replace it with a new one following the correct polarity.

What should I do if the remote control is not working?

Check the battery level, reprogram the remote if necessary, and ensure there are no obstructions blocking the signal between the remote and the device.



Can I use this remote control with multiple devices?

Depending on the model, some remote controls can be programmed to work with multiple compatible devices. Refer to the user manual for specific instructions.

## Documents / Resources



[rf Solutions QUANTAFOB Remote Control System \[pdf\]](#) User Guide  
QUANTAFOB Remote Control System, QUANTAFOB, Remote Control Sy  
stem, Control System, System

## References

- [User Manual](#)

RF

SOLUTIONS

Control System, QUANTAFOB, QUANTAFOB Remote Control System, Remote Control System, RF SOLUTIONS, System

---

## Leave a comment

Your email address will not be published. Required fields are marked \*

Comment \*

Name

Email

Website

☐ Save my name, email, and website in this browser for the next time I comment.

**Post Comment**

**Search:**

e.g. whirlpool wrf535swhz

**Search**

[Manuals+](#) | [Upload](#) | [Deep Search](#) | [Privacy Policy](#) | [@manuals.plus](#) | [YouTube](#)

This website is an independent publication and is neither affiliated with nor endorsed by any of the trademark owners. The "Bluetooth®" word mark and logos are registered trademarks owned by Bluetooth SIG, Inc. The "Wi-Fi®" word mark and logos are registered trademarks owned by the Wi-Fi Alliance. Any use of these marks on this website does not imply any affiliation with or endorsement.