

RF Solutions Ltd 9S1 Remote Control Systems product



# RF Solutions Ltd 9S1 Remote Control Systems User Guide

[Home](#) » [RF Solutions Ltd](#) » RF Solutions Ltd 9S1 Remote Control Systems User Guide 

## Contents

- [1 RF Solutions Ltd 9S1 Remote Control Systems](#)
- [2 Specifications](#)
- [3 Safety Information](#)
- [4 OVERVIEW](#)
- [5 RECEIVER](#)
- [6 INSTALLATION AND USING INSTRUCTION](#)
- [7 Simplified Declaration of Conformity \(RED](#)
- [8 FAQ](#)
- [9 Documents / Resources](#)
  - [9.1 References](#)
- [10 Related Posts](#)



**RF Solutions Ltd 9S1 Remote Control Systems**



## Specifications

- **Product Name:** HORNETPRO Remote Control TRAP9 Remote Control Systems
- **Model Numbers:** TRAP-9S1, TRAP-9S4, TRAP-9R4
- **Compliance:** RED, ROHS Directive 2011/65/EU, Waste Batteries and Accumulators Directive 2006/66/EC, WEEE Directive 2012/19/EU

## Safety Information

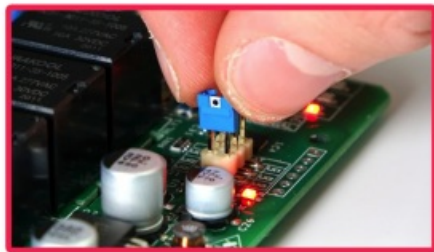
Carefully read the following safety information before proceeding with the installation, operation, or maintenance of the RF Solutions product. Failure to follow these warnings could result in death or serious injury.

- This radio system must not be used in areas where there is a risk of explosion.
- Only qualified personnel should be permitted to access the transmitter and operate the equipment.
- Always follow operating information as well as all applicable safety procedures and requirements.
- You must satisfy the age requirements in your country for operating the equipment.
- Store in a safe place.
- Keep a clear view of the work area at all times before using, and check it is safe to do so Before maintenance intervention on any remote-controlled equipment
- Do not open the receiver enclosure unless you are qualified.
- Disconnect all electrical power from the equipment.
- Check the enclosure and cable for damage regularly, do not use them if there is evidence of damage

## OVERVIEW



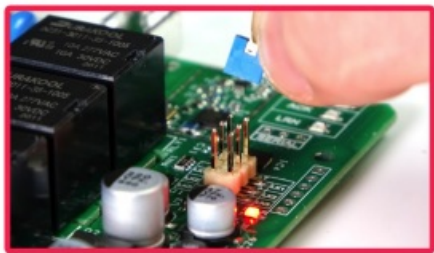
## RECEIVER



LK3



N/A	LoRa Mode 1	LoRa Mode 2	LoRa Mode 3	LoRa Mode 4
x1	x2	x3	x4	x5

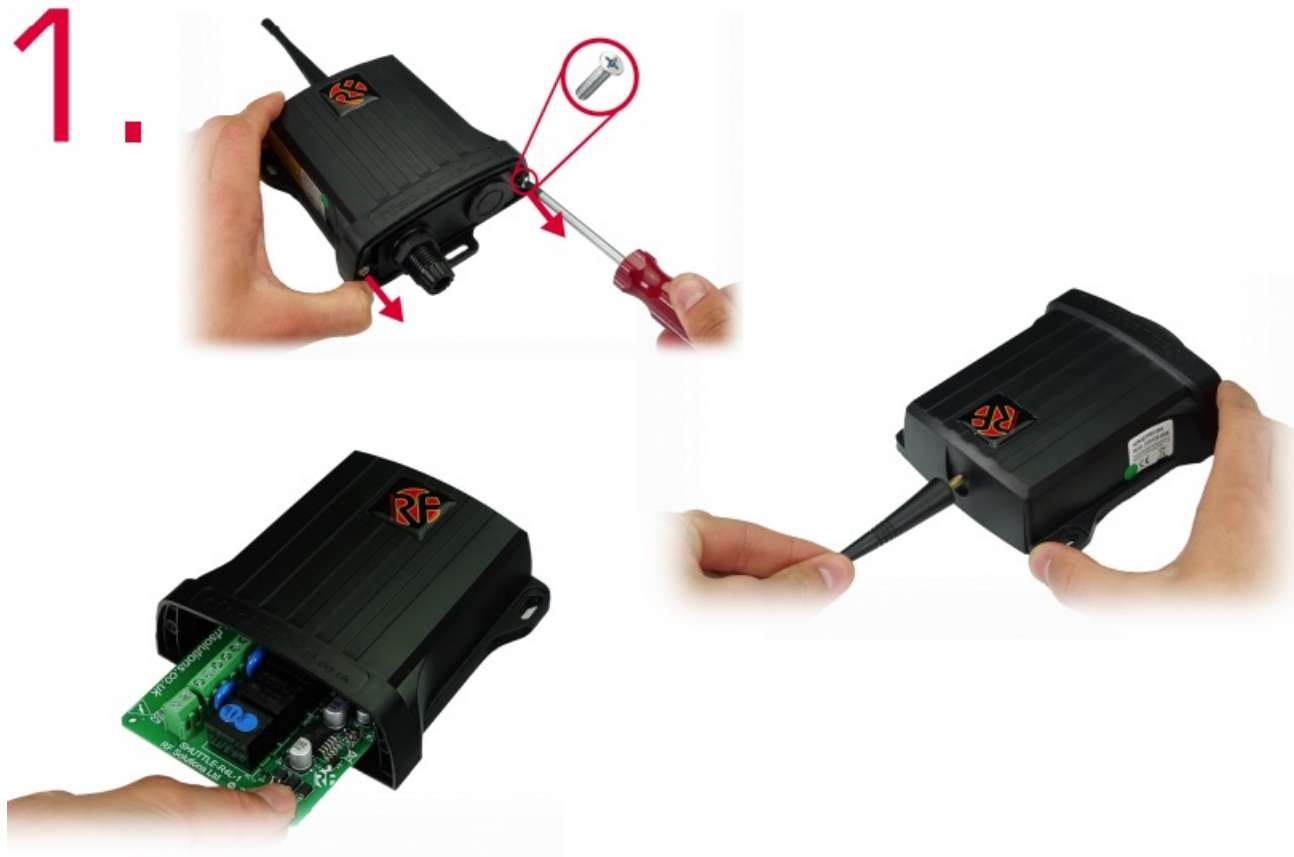


## INSTALLATION AND USING INSTRUCTION



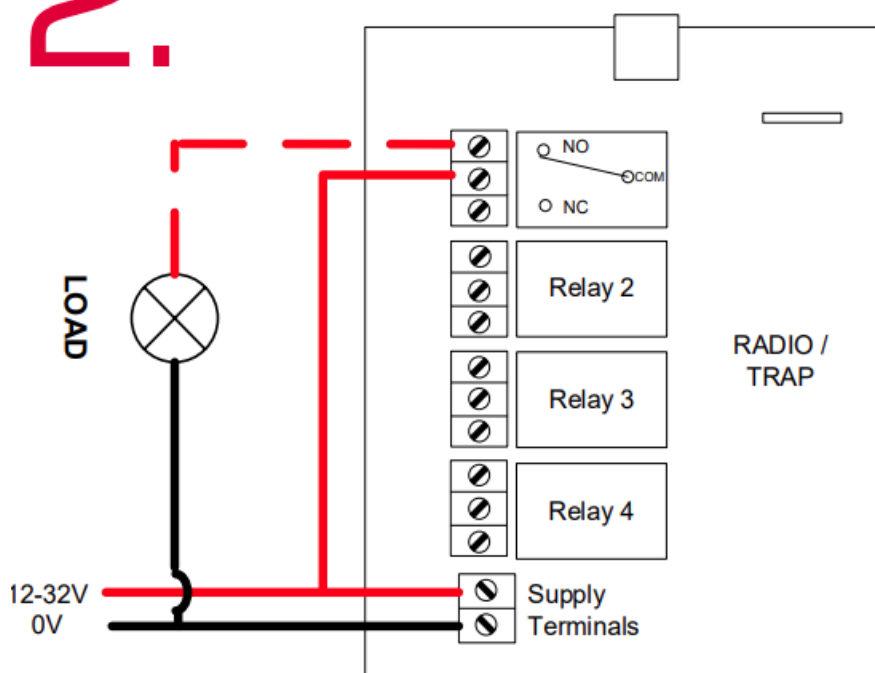


1.



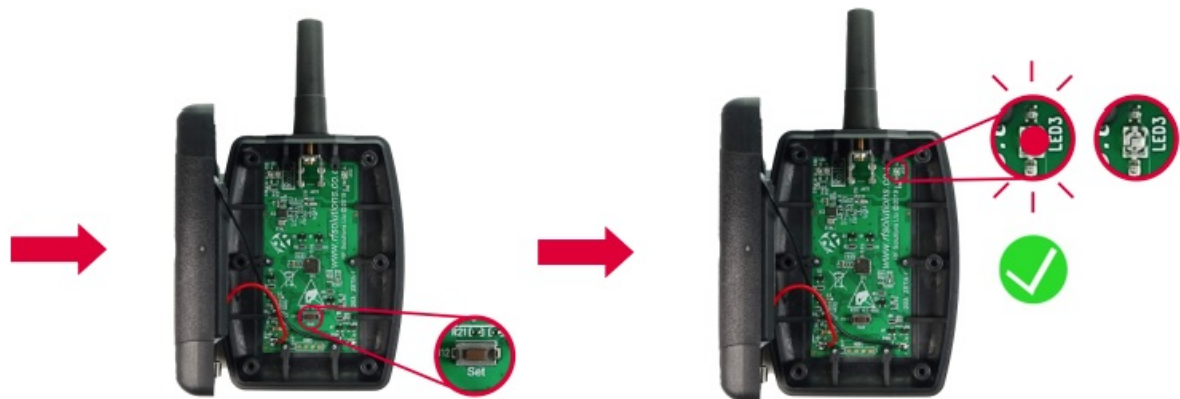
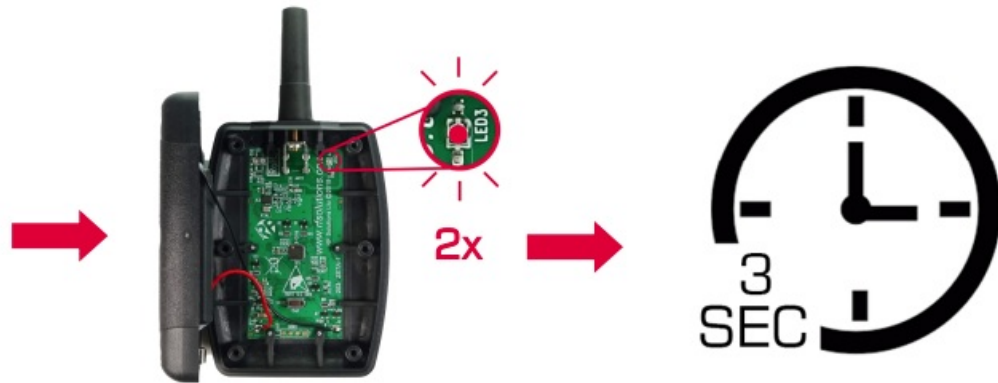
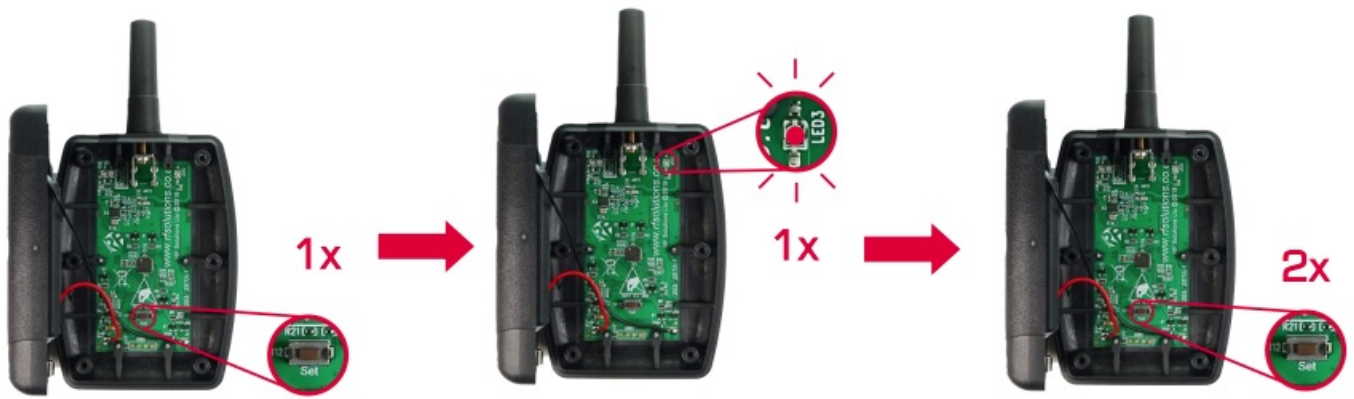
## WIRING

2.



Wiring Example







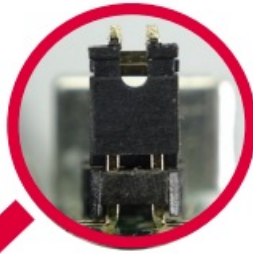
Setting Acknowledgement Feature

ACKNOWLEDGEMENT = PAIRED RELAY OPERATED

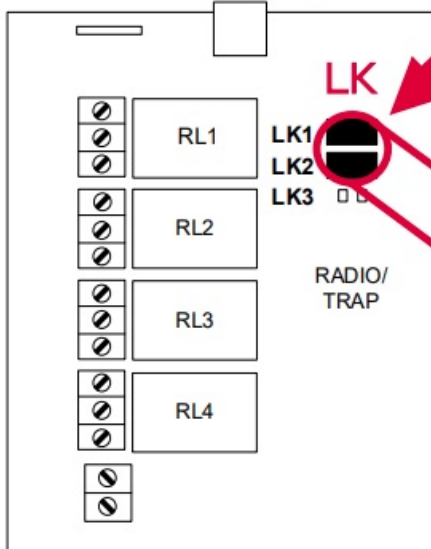




# 3.



Setting Momentary / Action



LK	RL1	RL2	RL3	RL4
LK1 □ □	1/2 SEC	1/2 SEC	1/2 SEC	1/2 SEC
LK1 □ □	MOMENTARY	MOMENTARY	MOMENTARY	MOMENTARY
LK1 LK2	LATCHING	LATCHING	LATCHING	LATCHING
LK1 LK2	MOMENTARY	MOMENTARY	LATCHING	LATCHING
LK1 LK2	MOMENTARY	MOMENTARY	MOMENTARY	MOMENTARY

MOMENTARY



LATCHING







Erase all Pairings





## Simplified Declaration of Conformity (RED)

Hereby, RF Solutions Limited declares that the radio equipment type defined within this document complies with Directive 2014/53/EU. The full text of the EU Declaration of conformity is available at the following internet address: [www.rfsolutions.co.uk](http://www.rfsolutions.co.uk)

### Disclaimer:

Whilst the information in this document is believed to be correct at the time of issue, RF Solutions Ltd does not accept any liability whatsoever for its accuracy, adequacy or completeness. No express or implied warranty or representation is given relating to the information contained in this document. RF Solutions Ltd reserves the right to make changes and improvements to the product(s) described herein without notice. Buyers and other users should determine for themselves the suitability of any such information or products for their own particular requirements or specification(s). RF Solutions Ltd shall not be liable for any loss or damage caused as a result of user's own determination of how to deploy or use RF Solutions Ltd's products. Use of RF Solutions Ltd products or components in life support and/or safety applications is not authorised except with express written approval. No licences are created, implicitly or otherwise, under any of RF Solutions Ltd's intellectual property rights. Liability for loss or damage resulting or caused by reliance on the information contained herein or from the use of the product (including liability resulting from negligence or where RF Solutions Ltd was aware of the possibility of such loss or damage arising) is excluded. This will not operate to limit or restrict RF Solutions Ltd's liability for death or personal injury resulting from its negligence.

### RF Solutions Ltd. Recycling Notice

- Meets the following EC Directives:
- DO NOT Discard with normal waste, please recycle.

## ROHS Directive 2011/65/EU and amendment 2015/863/EU

- Specifies certain limits for hazardous substances.

## WEEE Directive 2012/19/EU

- Waste electrical & electronic equipment. This product must be disposed of through a licensed WEEE collection point. RF
- Solutions Ltd., fulfils its WEEE obligations by membership of an approved compliance scheme.

## Waste Batteries and Accumulators Directive 2006/66/EC

Where batteries are fitted, before recycling the product, the batteries must be removed and disposed of at a licensed collection point. RF Solutions battery producer number: BPRN00060.

Environment agency number: WEE/JB0104WV.

## FAQ

- **Q: What should I do if I suspect the battery is damaged?**
  - **A:** If you suspect the battery is damaged (e.g., emitting unusual smell, feeling hot, changing color or shape), stop using it immediately and consult a physician.
- **Q: Can anyone operate the equipment?**
  - **A:** No, only qualified personnel should have access to the transmitter and operate the equipment to ensure safety and proper functioning.

## RF Solutions Ltd

William Alexander House, William Way, Burgess Hill, West Sussex, RH15 9AG

**Sales:** +44(0) 1444 227900

**Support:** +44(0) 1444 227909

[www.rfsolutions.co.uk](http://www.rfsolutions.co.uk)

---

## Documents / Resources



[RF Solutions Ltd 9S1 Remote Control Systems](#) [pdf] User Guide  
9S1 Remote Control Systems, 9S1, Remote Control Systems, Control Systems

## References

- [RF Solutions | Remote control systems, RF Modules, Antennas](#)
- [User Manual](#)

## **Manuals+. Privacy Policy**

This website is an independent publication and is neither affiliated with nor endorsed by any of the trademark owners. The "Bluetooth®" word mark and logos are registered trademarks owned by Bluetooth SIG, Inc. The "Wi-Fi®" word mark and logos are registered trademarks owned by the Wi-Fi Alliance. Any use of these marks on this website does not imply any affiliation with or endorsement.