



REXING W1 7 Inches Multimedia Receiver W/ Backup Camera User Manual

[Home](#) » [Rexing](#) » REXING W1 7 Inches Multimedia Receiver W/ Backup Camera User Manual 

Contents

- 1 REXING W1 7 Inches Multimedia Receiver W/ Backup Camera
- 2 Overview
- 3 Package Contents
- 4 Product Overview
- 5 Interface Overview
- 6 Basic Operation
 - 6.1 Car Media Receiver
- 7 Connect with Apple CarPlay
- 8 Apple CarPlay Features
- 9 Connect to Android Auto
- 10 Android Auto Features
- 11 Backup Camera
- 12 FM Transmission
- 13 Specification
- 14 Documents / Resources
 - 14.1 References
- 15 Related Posts



REXING W1 7 Inches Multimedia Receiver W/ Backup Camera



Overview

Thank you for choosing REXING!

We hope you love your new products as much as we do. If you need any assistance, or have any suggestions to help us improve, please contact us.

- care@rexingusa.com
- (877) 740-8004
- 9 am – 6 pm EST (Monday to Friday)

Our Support Team will respond to you as soon as possible. Always a surprise in Rexing. Check us out here.

- <https://www.facebook.com/rexingusa/>
- <https://www.instagram.com/rexingdashcam/>
- <https://www.rexingusa.com/support/registration/>

 Facebook




 Instagram



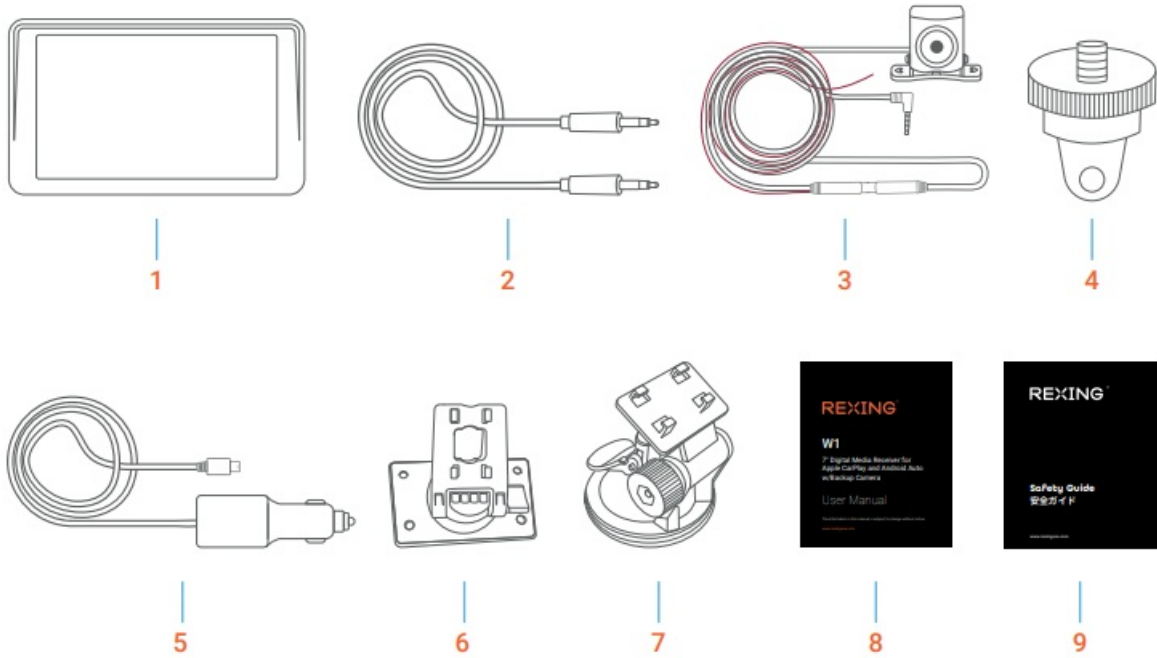
 Site



 Product Support

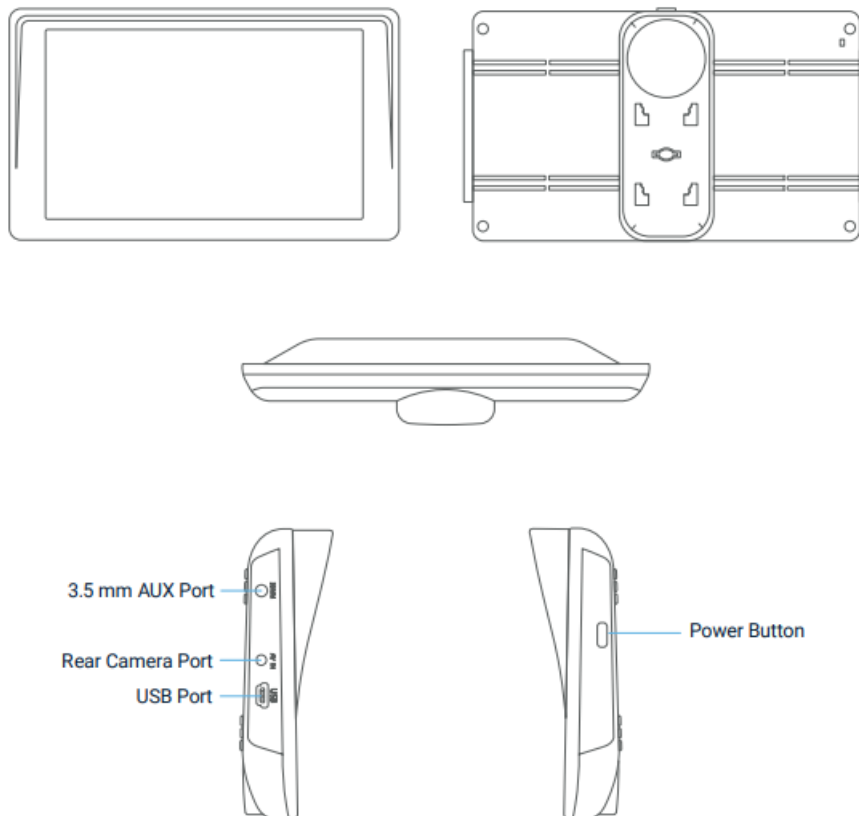


Package Contents

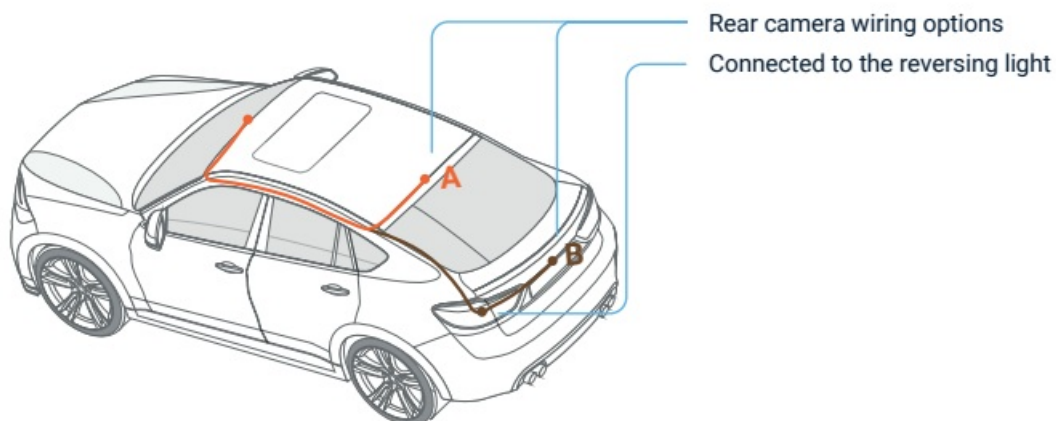


1. W1 7" Display
2. 3.5mm to 3.5mm Cable
3. Rear Camera
4. Installation Mount
5. Power Cable
6. Display Holder
7. Suction Cup Mount
8. User Manual
9. Safety Guide

Product Overview

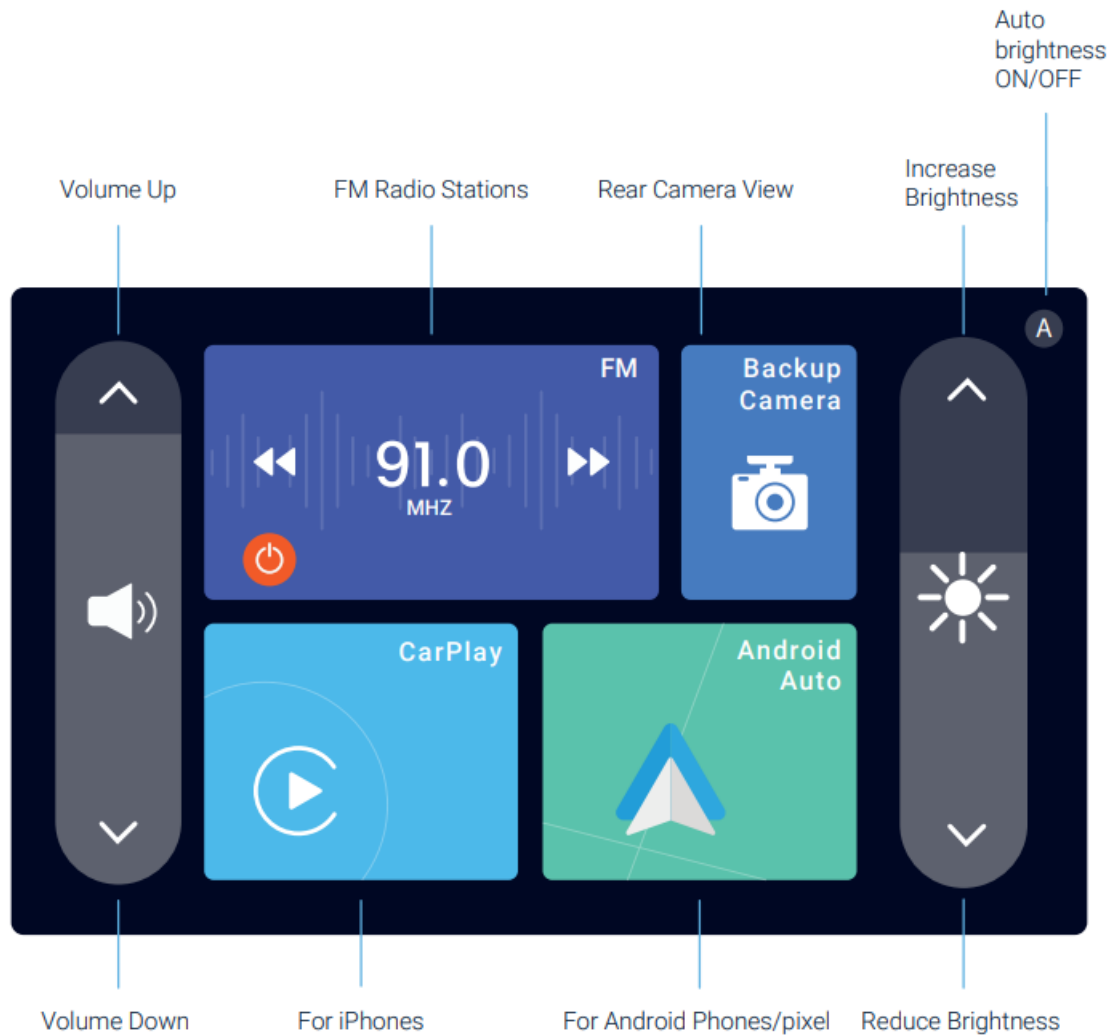


How to Wire the Rear Camera:



Note: It is not necessary to connect the red wire to the reverse light. But if you want to use the parking assist function, it's recommended to connect to the red cable to the reverse lights, so the screen will display the image of the rear camera automatically when the vehicle is in reverse. If you need more installation information, please reach out to care@rexingusa.com for assistance.

Interface Overview



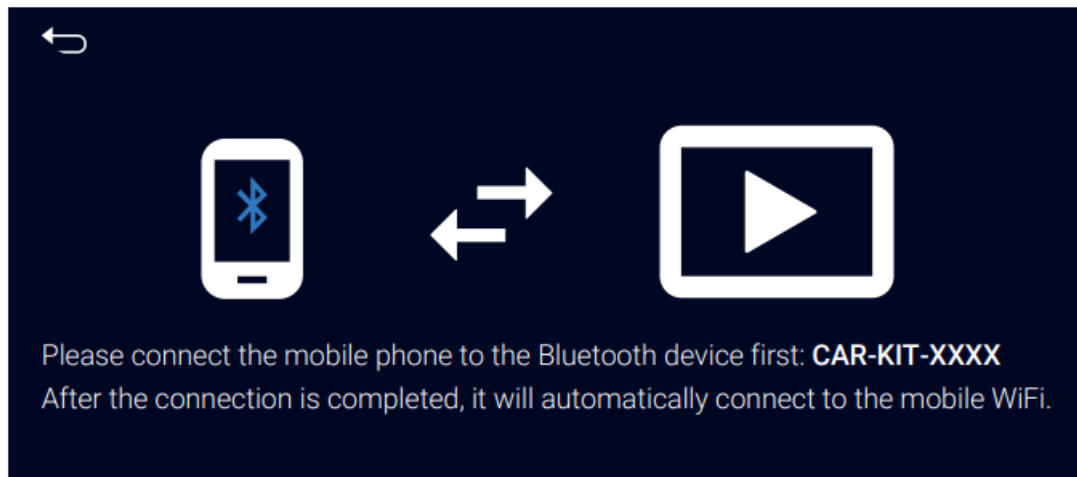
Basic Operation

Car Media Receiver

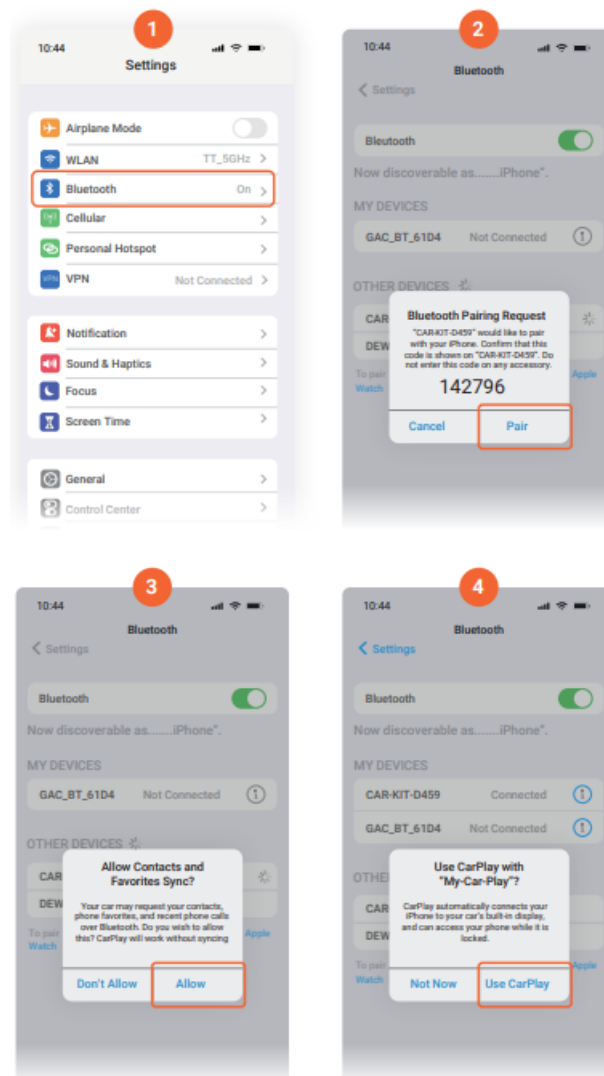
Notes:

- The CarPlay (iPhone) and Android Auto cannot be connected and used at the same time.
- The device will save the last iPhone/Android phone used as default, which will connect automatically next time.
- When connecting via Carplay or Android Auto, the device touch tone or camera tone will be muted.
- Make sure the Bluetooth and Wi-Fi settings are set to "ON" on your phone.

Connect with Apple CarPlay



How to Connect



1. Press the CarPlay icon in the main menu to start the connection.
2. Go to iPhone's Settings and press "Bluetooth", make sure it's turned "ON" before pairing.
3. Find CAR-KIT-XXXX from "OTHER DEVICES";
4. Select "Pair" and confirm the pairing code;
5. Select "Allow" to sync Contacts and Favorites (not required);

6. Select “Use CarPlay” for access permission; the W1 will display a CarPlay screen after the connection is complete.

Note Make sure the Bluetooth and Wi-Fi of your iPhone are turned “ON”. The CarPlay feature will be automatically connected next time when you press the CarPlay icon.

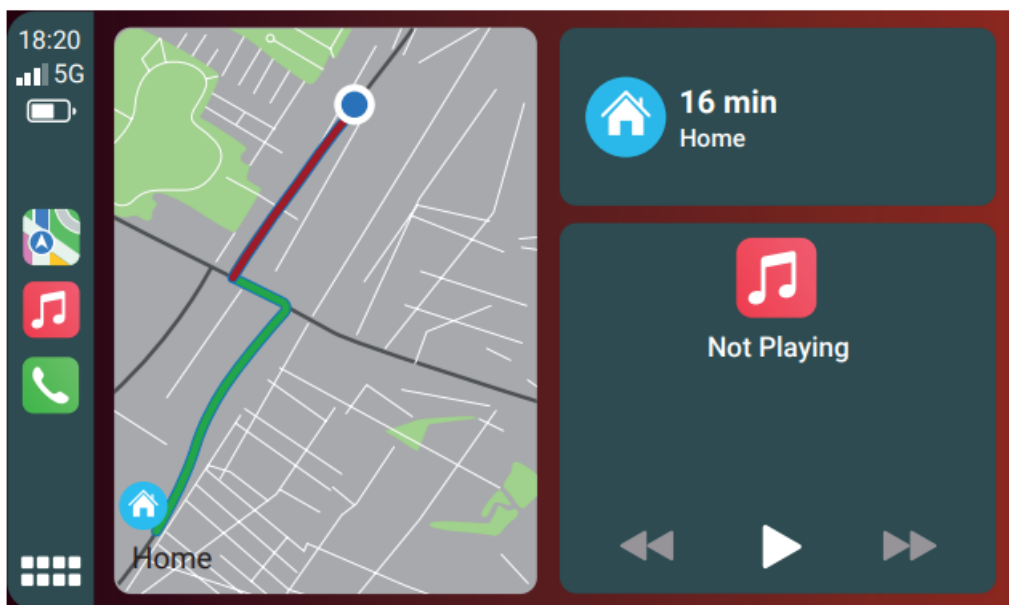
How to Disconnect

1. Turn off the Wi-Fi function or switch to another Wi-Fi network to disconnect;
2. The CarPlay can also be disconnected by ignoring Bluetooth device, but you may have to go through the steps for connection again the next time you try to connect/reconnect.

Notes:

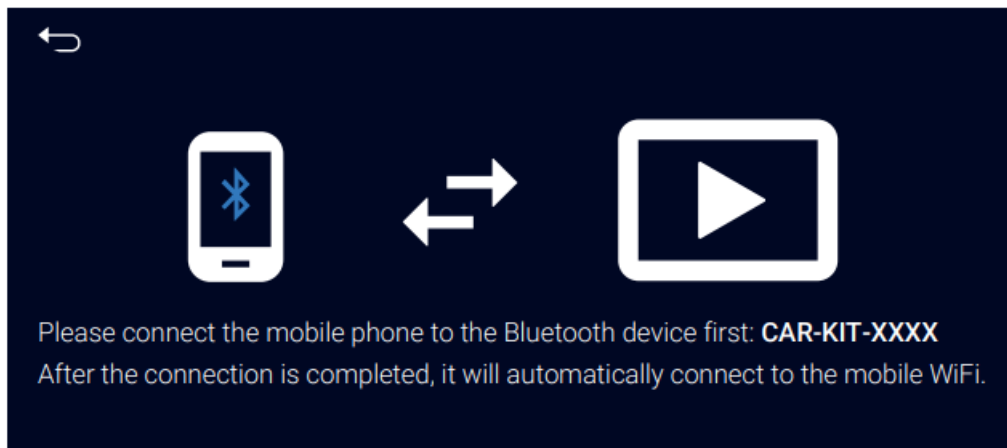
- Wi-Fi will be connected automatically after the Bluetooth connection is complete.
- Bluetooth connection will be disconnected following the successful connection of CarPlay. There is no need of clicking Bluetooth connection again then.
- If the Bluetooth and Wi-Fi are connected, but the CarPlay is not showing on the W1, please set your phone setting screen time content and privacy access restriction allowed App vehicle available start. (If it doesn't work after setting, please shut it down and restart the phone to remove the restriction before connecting the device again)

Apple CarPlay Features

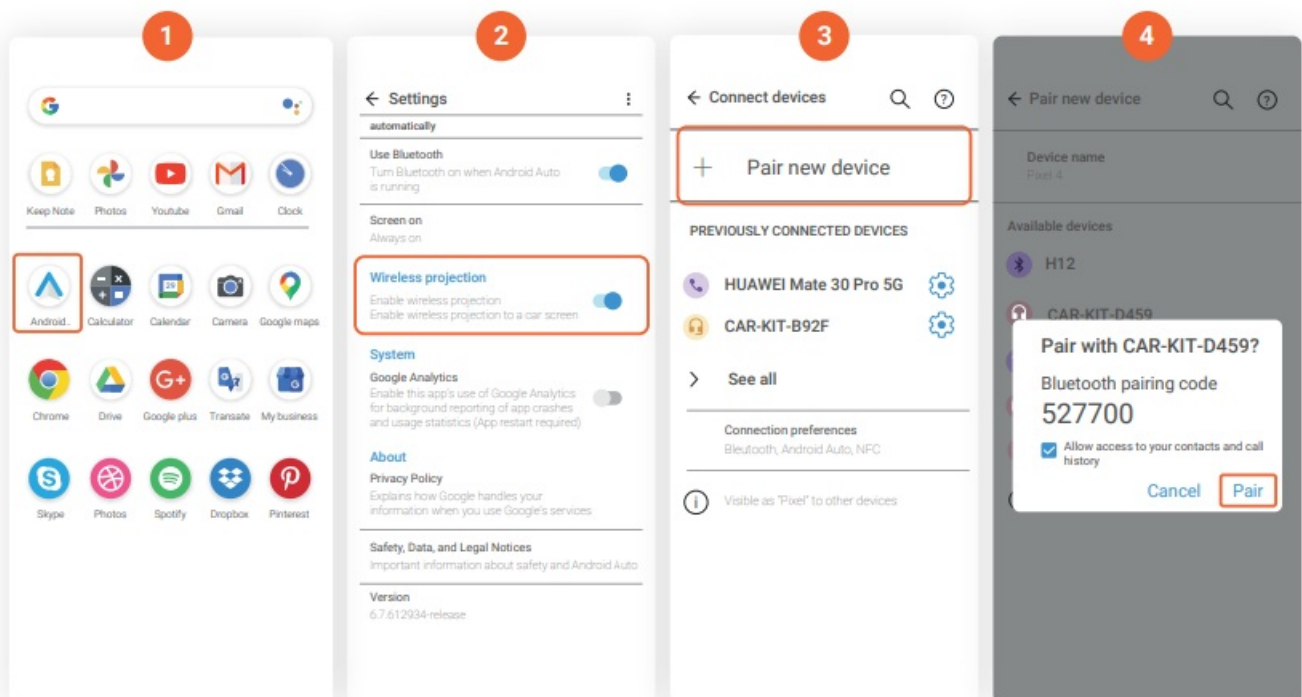


1. Access phone calls, messages, navigation, music, podcasts, audio books, etc. via your iPhone.
2. Start Siri by voice by saying “hey Siri”; or long press the navigation button in the lower left corner of the Carplay screen to Start Siri voice commands.
3. Return to the main interface: clicking the HOME icon on the carplay screen to return to the main interface.

Connect to Android Auto



How to Connect



Press the Android Auto icon in the main menu;

1. Download the Android auto App in your Android phone via the Google Store.
2. Open the Android auto App and go to Settings, turn on the “wireless projection” function;
3. Turn on the Bluetooth in phone and press the “Pairing new device”;
4. Choosing “Pair” when searching CAR-KIT-**** the interface of the Android Auto will show up the W1 Display after a successful connection.

How to Disconnect:

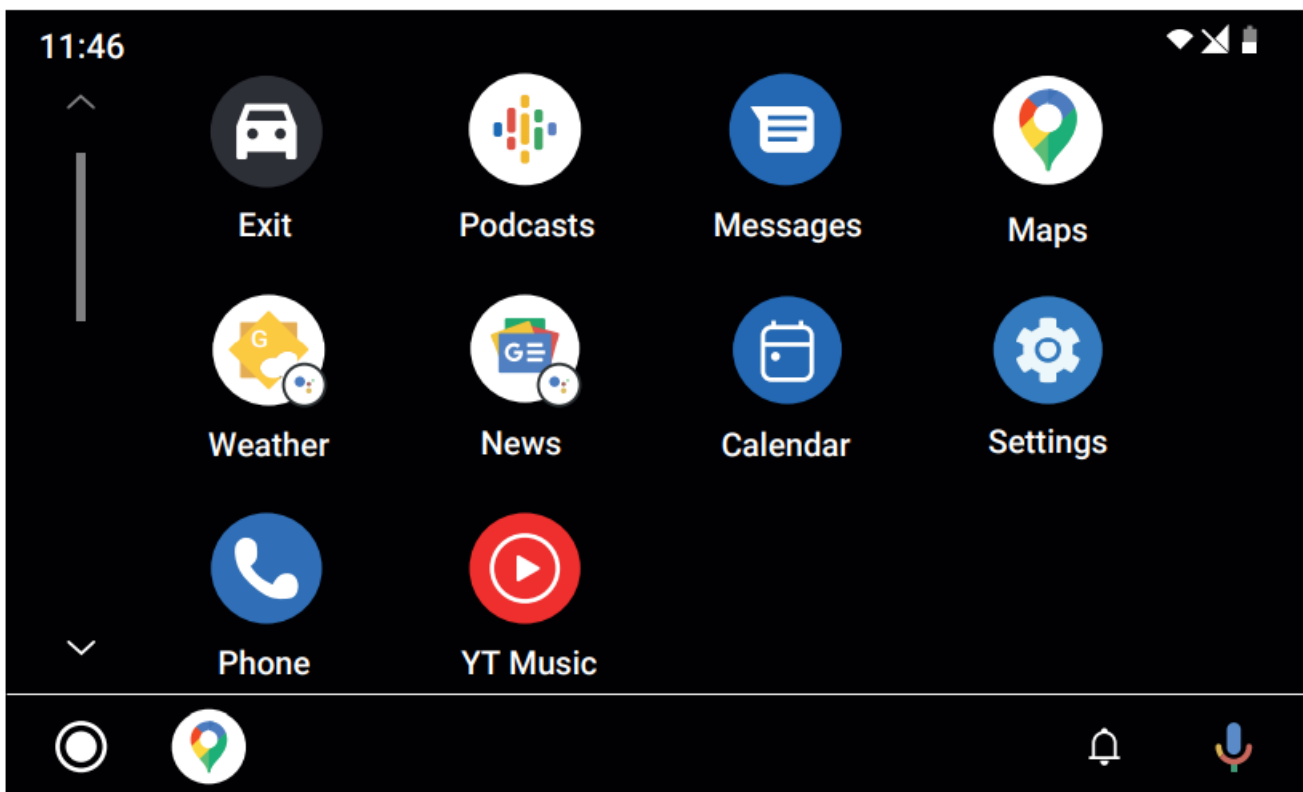
1. Turn off the Wi-Fi or switching to other Wi-Fi network to disconnect.
2. Ignoring Bluetooth device to disconnect Android Auto. If your device disconnects, you may have to go through the steps for connection again the next time you try to connect/reconnect.
3. During the operation, if you shut it down by mistake and start the Bluetooth switch in phone, ou may have to go

through the steps for connection again the next time you try to connect/reconnect.will show up the W1 Display after a successful connection.

Notes:

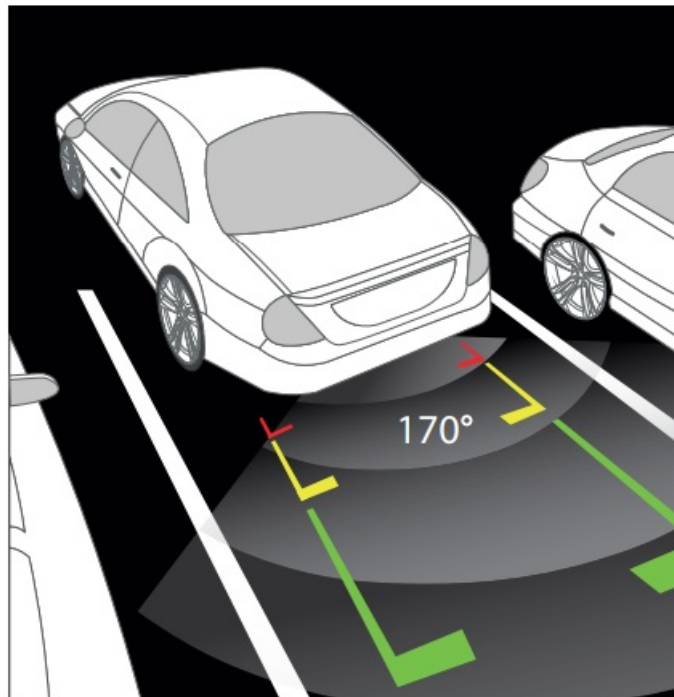
- For Pixel phones, the operating system needs to be above Android 8.0 to complete this. For other phones, it should be equipped with systems above Android 11. Please go to Google store for Android auto APP.
- Wi-Fi will be automatically connected after the connection with Bluetooth device. Please don't connect Wi-Fi device manually;
- If Android auto cannot be connected, please start Android auto App before connecting the Bluetooth device.

Android Auto Features



1. Access phone calls, messages, news, podcasts, navigation, music, news, weather app, etc.
2. Turn on the virtual assistant by voice; or clicking the microphone at the bottom right of the image of Android auto to turn it on.
3. Returning to the main interface: clicking the icon of exit in the image of Android auto to return to the main interface.

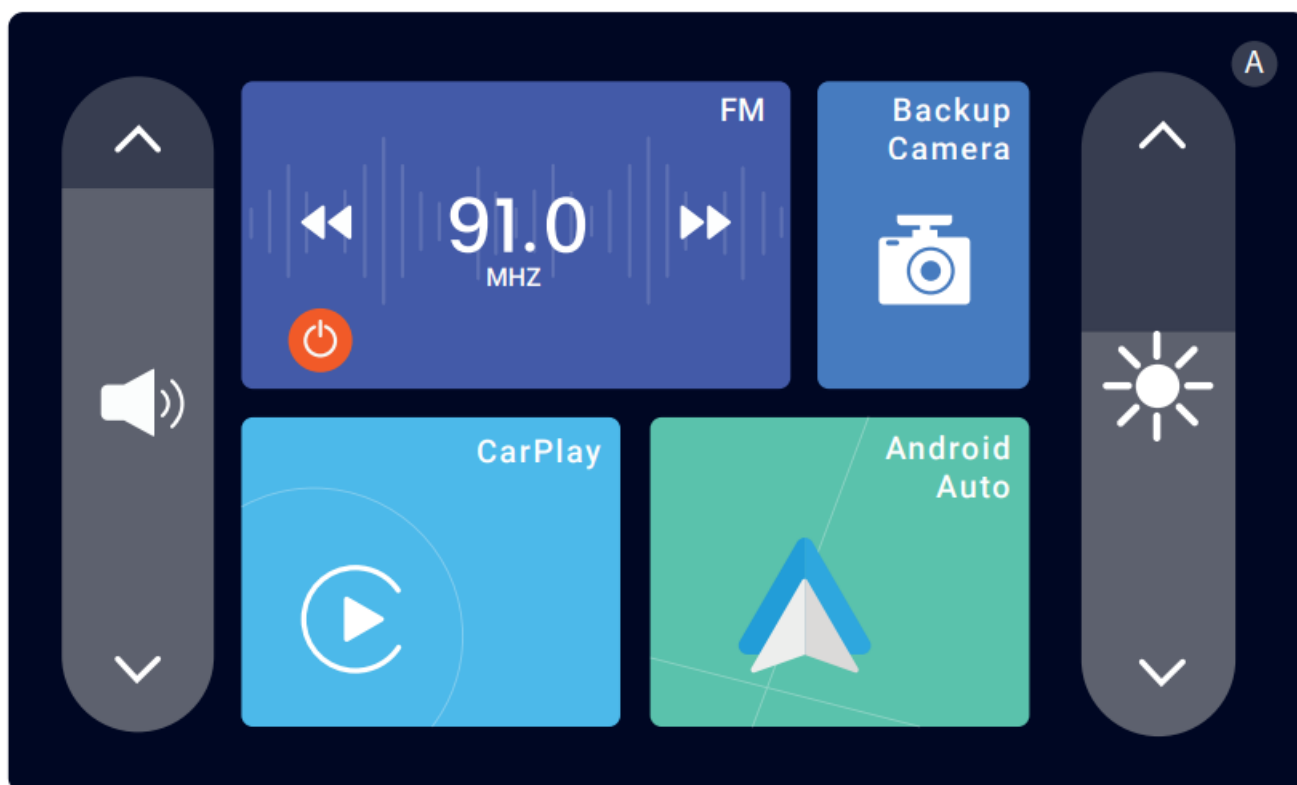
Backup Camera



Backup View:

Press the rear camera button to activate the rear camera. Or if you want to use the parking assist function, it's recommended to connect to the red cable to the reverse lights, so the screen will display the image of the rear camera automatically when the vehicle is in reverse.

FM Transmission



How to Connect:

1. Press the POWER icon to turn on (GREEN) the FM transmission function, press it again to turn the feature off (ORANGE).
2. The frequency band can be set by clicking the left and right arrow (the default frequency band is 91.0 MHz)

3. Adjusting the FM frequency band of vehicle radio to the same one as the device FM transmission. Adjusted according to actual situation, please use the frequency without a radio station to avoid interference.
4. The CarPlay or Android Auto function will be connected and the output voice will be played on the vehicle radio.

Specification

Model No. **W1**

- Product: Rexing 7" Digital Media Receiver for Apple CarPlay and Android Auto w/ Backup Camera
- CPU: Cortex-A53 dual-core 1.2G
- DDR: DDR3 1G
- FLASH: 256M
- Touchscreen: YES
- Working Voltage: 5V
- Working Temperature: -13 °F to 149°F
- Storage Temperature: -31°F to 185 °F
- Screen Size: 7"
- Power Cable Length: 11.5 ft
- Media Support: Apple CarPlay, Android Auto
- AUX Output: Support

Warranty

The Rexing W1 comes with a full 12-month warranty. If you register your product on our official site <https://www.rexingusa.com/support/registration>, you can extend the warranty to 18 months.

Support

If you have any questions regarding your product, please do not hesitate to contact us at care@rexingusa.com, or call us at (877) 740-8004. Queries are typically answered within 12-24 hours.

Your opinion matters

Rexing is firmly committed to always improving our products, services, and user experience. If you have any thoughts on how we can do even better, we welcome your constructive feedback and suggestions.

Connect with us today at care@rexingusa.com

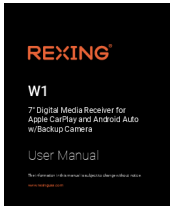
Thank you for choosing Rexing!

FCCID: 2AW5W-W1

This device complies with part 15 of the FCC Rules. Operation is subject to the following two conditions: (1) This device may not cause harmful interference, and (2) this device must accept any interference received, including interference that may cause undesired operation.





Changes or modifications not expressly approved by the party responsible for compliance could void the user's authority to operate this equipment.

Documents / Resources



[REXING W1 7 Inches Multimedia Receiver W/ Backup Camera](#) [pdf] User Manual
W1 7 Inches Multimedia Receiver W Backup Camera, W1, 7 Inches Multimedia Receiver W Backup Camera, Multimedia Receiver W Backup Camera, Receiver W Backup Camera, Backup Camera, Camera

References

-  [Rexing USA | Your Roadside Eyewitness](#)
-  [Yuhe Sun \(@rexingdashcam\) • Instagram photos and videos](#)
-  [Rexing USA](#)
-  [Rexing USA](#)

Manuals+.