



REXING V3 Plus Front and Cabin Dash Cam User Guide

[Home](#) » [Rexing](#) » REXING V3 Plus Front and Cabin Dash Cam User Guide 

Contents

- [1 REXING V3 Plus Front and Cabin Dash Cam](#)
- [2 Overview](#)
- [3 What's in the Box](#)
- [4 Camera Overview](#)
- [5 Screen Icons](#)
- [6 Installation](#)
- [7 Basic Operation](#)
- [8 Video Recording](#)
- [9 Wi-Fi Connect](#)
- [10 GPS Logger](#)
- [11 Documents / Resources](#)
 - [11.1 References](#)
- [12 Related Posts](#)

REXING

REXING V3 Plus Front and Cabin Dash Cam



Overview

Thank you for choosing REXING! We hope you love your new product as much as we do. If you need assistance, or have any suggestions to improve it, please contact us. You can reach us via care@rexingusa.com or call us at (203) 800-4466. Our support team will respond you as soon as possible.

Always a surprise in Rexing. Check us out here.

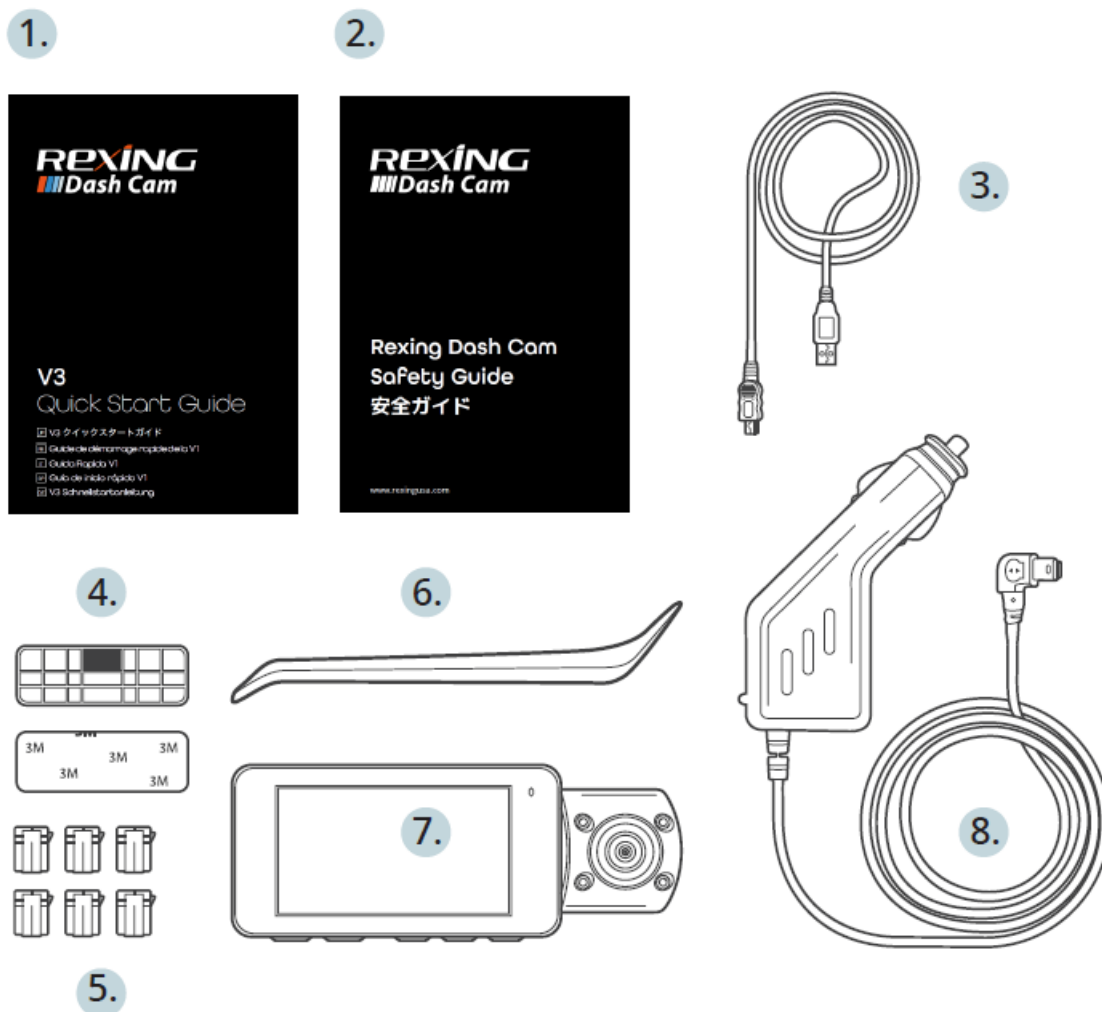
<https://www.facebook.com/rexingusa/>

<https://www.instagram.com/rexingdashcam/>

<https://www.rexingusa.com/support/registration/>



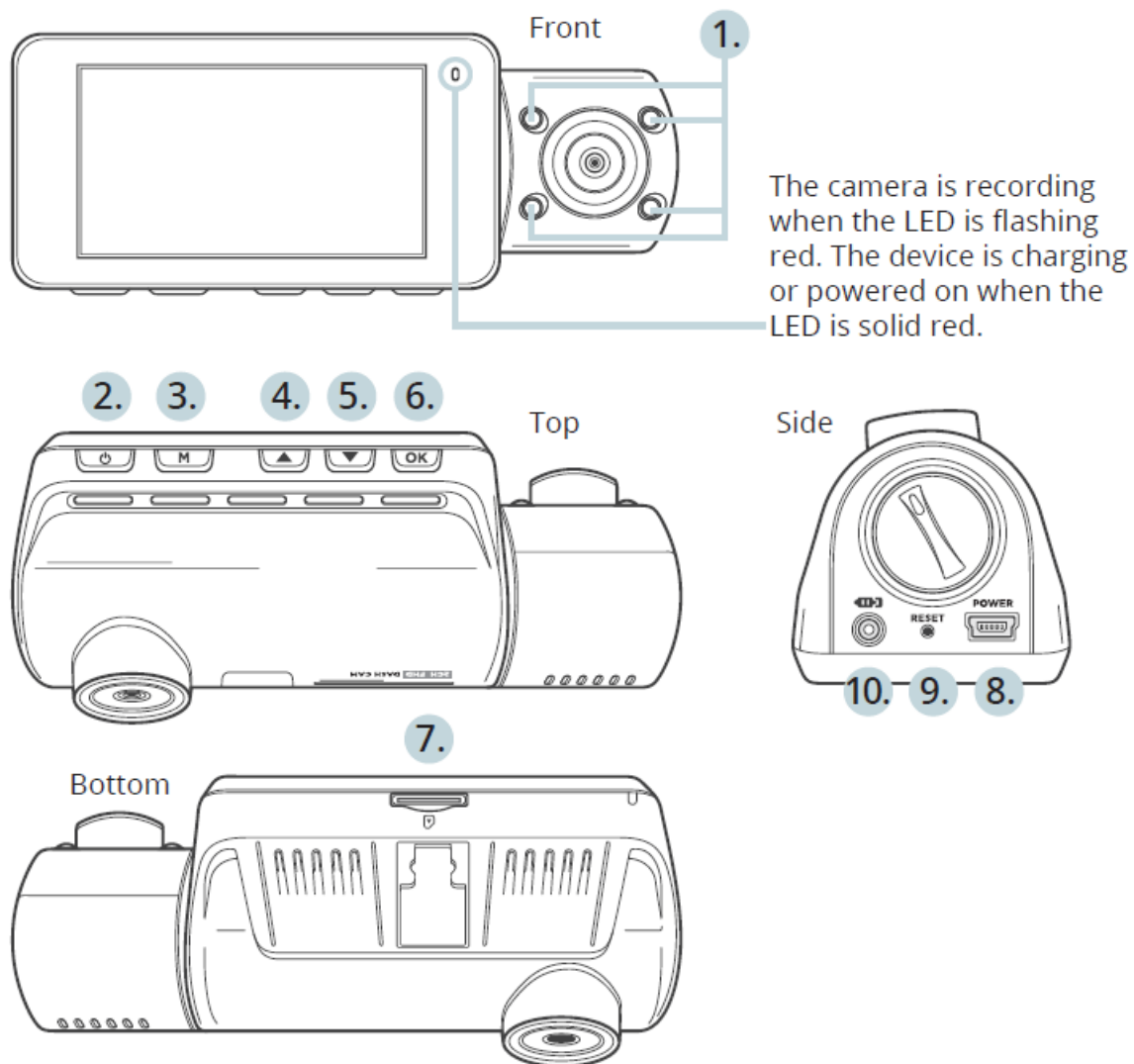
What's in the Box



1. V3 Quick Start Guide
2. Safety Guide
3. USB Cable
4. 3M Adhesive Mount

5. Cable Adhesive Spacer
6. Cable Management Tool
7. Rexing V3 Dashboard Camera
8. Car Power Connector (12ft)

Camera Overview



1. 4 IR Lights
2. Power Button / Screen Toggle Button
3. Menu Button / Mode Button
4. Up Navigation Button / Front and Rear Switch Button
5. Down Navigation Button / Mic Button
6. OK (Confirm) Button / Emergency Lock Button / Record Button
7. Micro SD Card Slot
8. Power / USB Charging Port
9. Reset Button
10. Rear Camera Port (currently not support)

Screen Icons

Exposure Value

WDR Mode (on)

Recording
Standby Status

(Not Connected)

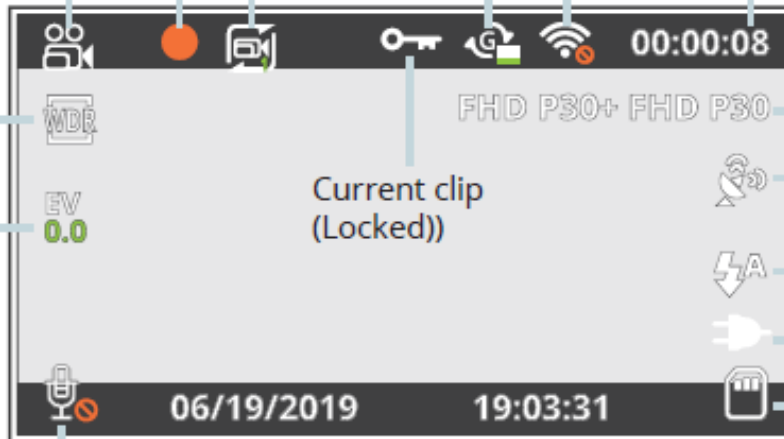
Wi-Fi

Recording Time
(current clip)

G Sensor Level

Recording (on)

Loop Recording
Time



Video Resolution

GPS Signal
(Searching)

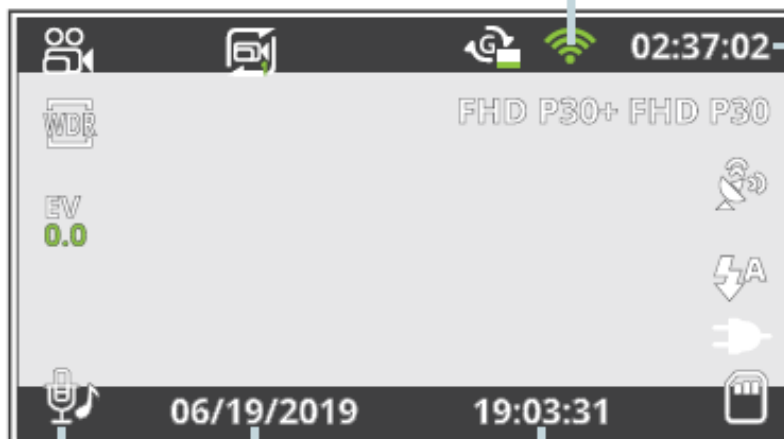
IR Lights

Battery Charging

Memory Card
(Inserted)

MIC (off)

Wi-Fi (Connected)



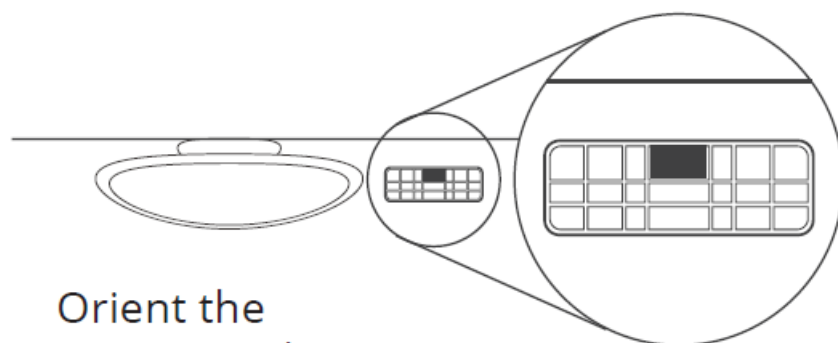
Memory Card
Remaining Time

MIC (on)

Current Date
(DD/MM/YYYY)

Time (24h)

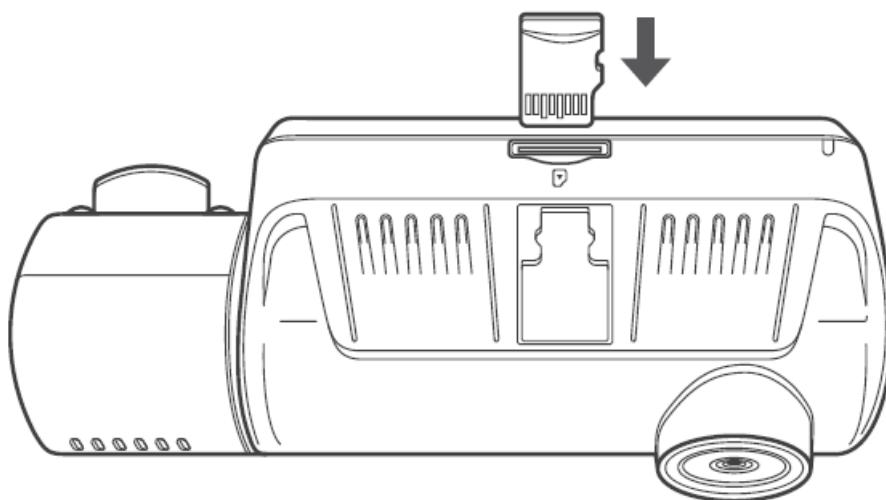
Installation



Orient the
mount as shown

Step 1: Install the Dash Cam

Place the 3M tape on the mount and properly orient the mount square to the roof and hood line of the vehicle. Firmly press the mount onto the windshield. Wait at least 20 minutes before mounting the camera. Orient the mount as shown on the illustration above.

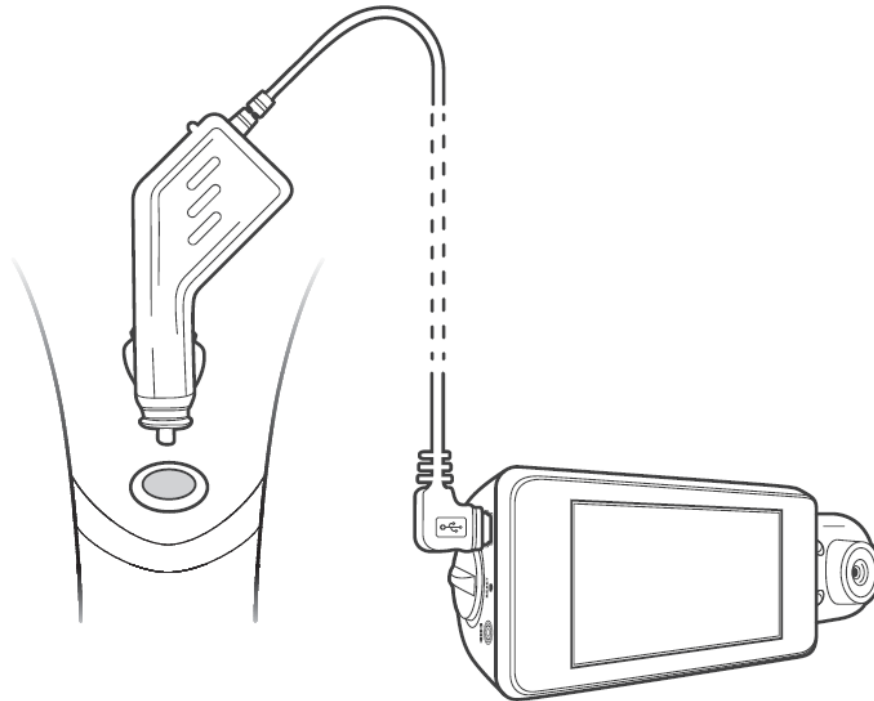


Step 2: Insert the Memory Card

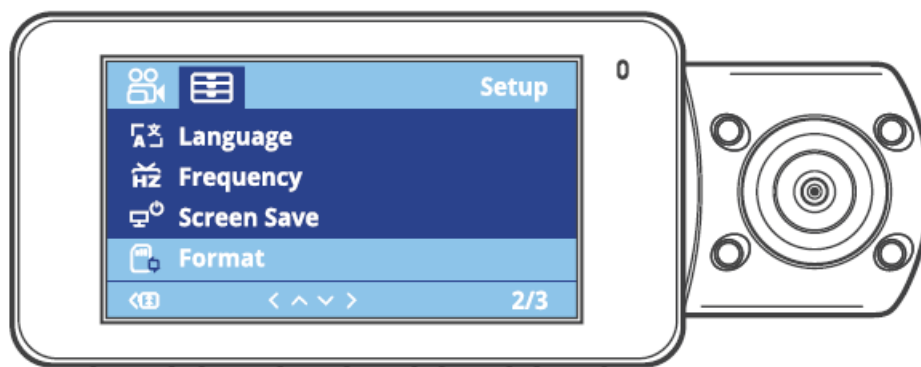
The Rexing V3 accepts [Class 10/UHS-1 or higher] Micro SD memory cards up to 256GB. You will need to insert a memory card before you can begin recording. Before inserting or removing a memory card, first ensure you've powered down the device. Gently push the memory card in until you hear a click, and allow the spring release to push the card out.

Step 3: Power the Camera and Format the Memory Card

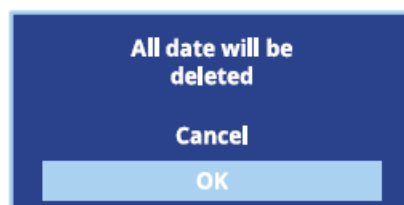
Power the camera by connecting the charger to the car cigarette lighter and camera. To ensure the V3 records to your memory card properly and without error. Before you start using a new memory card, you must format the card within the camera using the format function. Always backup important data stored on the memory card before formatting.



To format the memory card, make sure you have inserted your memory card, then turn on the device by connecting to a power source. Press OK to stop recording. Then press the MENU button twice to enter the System Setup Menu.



Press the Menu
button twice



Press the OK
button to confirm
formatting the
card

Use the UP and DOWN navigation buttons and go to the Format setting. Press the OK button to confirm the selection.

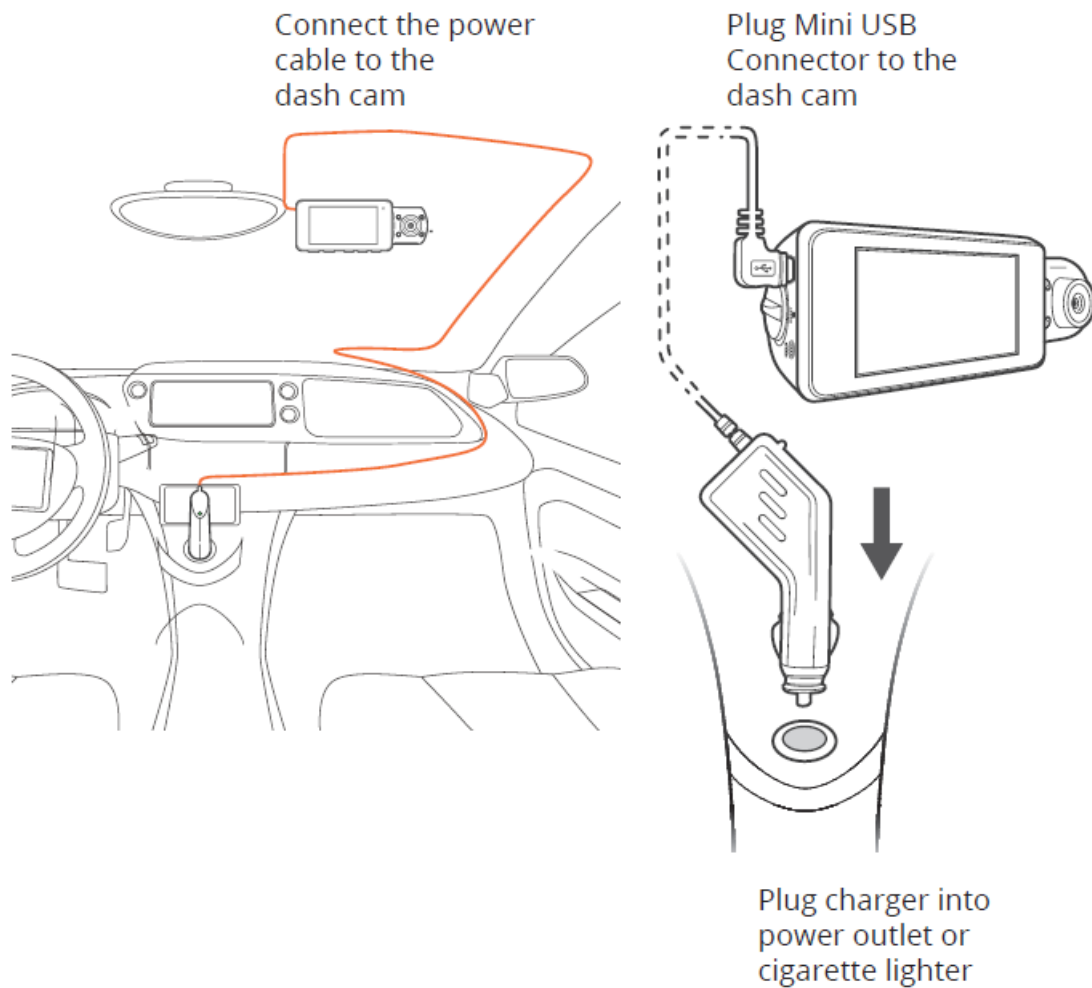
You may now disconnect from power. The camera will shut down after 3 seconds. The camera should begin recording automatically the next time it is powered on.

Step 4: Installing the Camera onto the Windshield

Place the camera on the mount and carefully route the power cable around the windscreen and tuck it under the trim.

Plug the car charger cable to a 12V DC power outlet or the car cigarette lighter.

Connect car charger to the camera. The camera will auto-start recording once it's powered on.



Basic Operation

Device Power

The device will be automatically powered on when plugged into a 12V accessory socket or cigarette lighter when receives a charge (i.e.: the vehicle is started).

To turn the device on manually, press and hold the Power button until the welcome screen appears.

The camera will automatically start recording when it's powered on.



Press and hold the Power button to turn the device on manually

Menu Settings

Power the camera On. If the camera is recording, press the OK button to stop recording.

Hold the MENU button and toggle to the desired mode.

Press the MENU button once to enter the settings menu for a Mode. Press the MENU button twice to enter the System Settings (Set up).

Video Recording

The camera will automatically start recording when the device receives a charge. The LED lights and red dot will blink red device when recording. Press the OK button to stop recording.



Video Playback

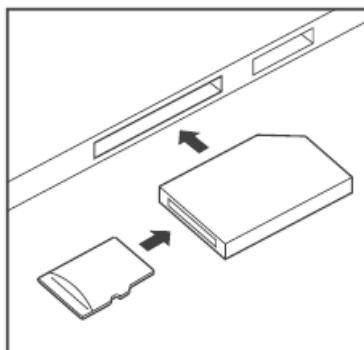
Playback of videos can be done on the device or a computer.

To playback a video on the device, toggle to the Playback mode. Use the UP and DOWN navigation buttons to toggle to the desired video. Press the OK button to play.



During playback, use the OK (pause), UP navigation (rewind) and DOWN navigation (fast forward) buttons to control the video playback.

To playback, a video on the computer, either use an SD card adapter or connect the device to the computer directly using the USB cable.

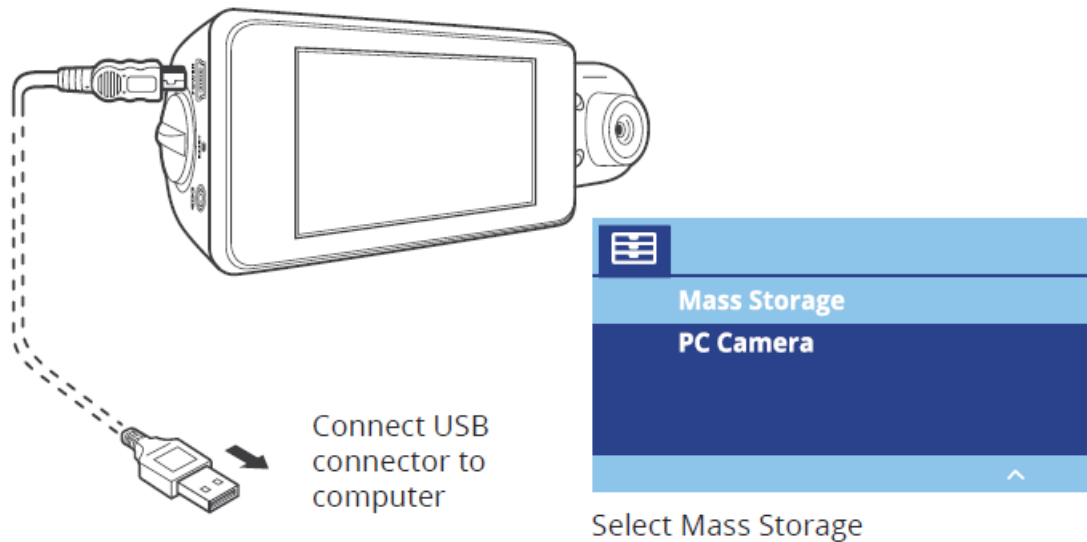


To playback, a video using an SD card adapter, remove the memory card and insert it into an SD card adapter. Place the adapter in the computer. Then place the adapter into the computer.

To playback, a video using a USB cable, connect the USB cable to the device and the computer. After the device is powered on, press the OK button to select Mass Storage.

On the computer, navigate to the device drivers. The videos are stored at: \CARDV\MOVIE. The locked videos are stored at: \CARDV\MOVIE\RO.

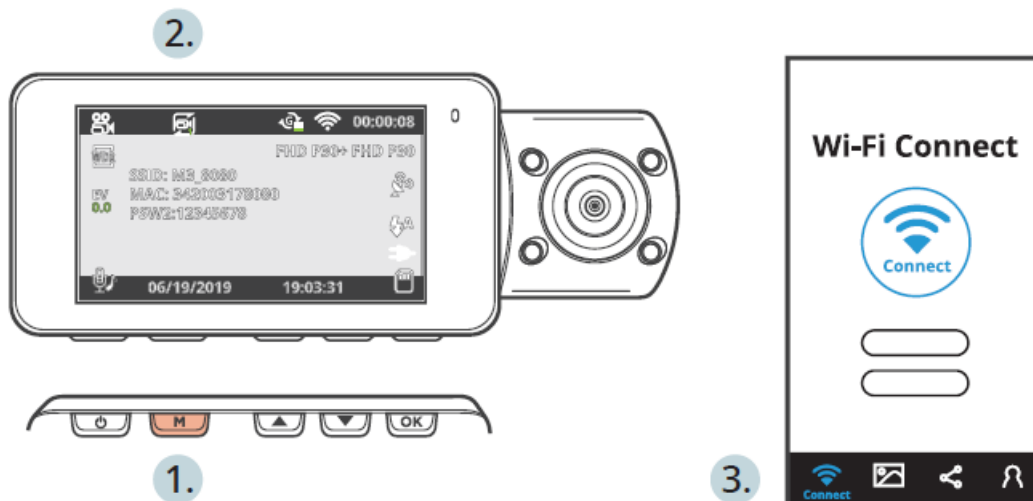
Select the video to playback.



Wi-Fi Connect

Download “Rexing Connect” app from the App Store/Google Play Store.

1. To access or exit the WiFi feature, hold down the UP navigation button.
2. Open Wi-Fi settings on your phone, find “SSID” from the list, tap to connect. (Default password: 12345678)
3. Open the Rexing Connect app, tap “Connect” to enter the realtime video streaming page.



4. Once connected, the dashcam screen will switch to the camera view and will display “WiFi Connected” message. Using the Rexing Connect app, you can view a live preview of the dash cam screen, start/stop recording, as well as view and save your captures with your mobile device.

For further instruction regarding the Wi-Fi Connect feature, please visit www.rexingusa.com/wifi-connect/.

GPS Logger

When connected to the camera, it will record the speed and location of your vehicle as you drive.

You can then access these information while playing back your recordings using the GPS Video player (For windows and Mac, available at rexingusa.com).

The dash cam will automatically search for the GPS signal once it's connected to the power source. Press the MENU button once and go to System Settings. Toggle the GPS setting, and select your favorite speed unit. After a GPS signal is found, the screen icon will turn from not connected to active – as per the below icons.



GPS Signal - Searching



GPS Signal - Active



GPS Signal - Not Connected

Taking Photos

- To take a photo, stop video recording and toggle to the Photo Mode.
- Press the OK button to take a photo.
- To view a photo, stop video recording and toggle to the Playback Mode.
- Press the UP and DOWN navigation buttons to toggle through your photos.



To delete a photo, stop video recording and toggle to the Playback Mode and toggle through the videos and photos to the one you want to delete.



- Press the MENU once and toggle to the Delete option.
- Press the OK Button and select Delete Current or Delete All.

FCC ID: 2AW5W-V3





This device complies with part 15 of the FCC Rules. Operation is subject to the following two conditions: (1) This device may not cause harmful interference, and (2) this device must accept any interference received, including interference that may cause undesired operation.

Changes or modifications not expressly approved by the party responsible for compliance could void the user's authority to operate this equipment.

Documents / Resources

	<p>REXING V3 Plus Front and Cabin Dash Cam [pdf] User Guide V3 Plus Front and Cabin Dash Cam, V3, Plus Front and Cabin Dash Cam</p>
	<p>REXING V3 Plus Front and Cabin Dash Cam [pdf] User Guide V3 Plus Front and Cabin Dash Cam, V3 Plus, Front and Cabin Dash Cam</p>

References

-  [Rexing USA | Your Roadside Eyewitness](#)
-  [Wi-Fi Connect](#)
-  [Yuhe Sun \(@rexingdashcam\) • Instagram photos and videos](#)
-  [Rexing USA](#)