



## ReXiNG Dash Cam V1 Basic User Guide

[Home](#) » [Rexing](#) » ReXiNG Dash Cam V1 Basic User Guide 



### V1 Basic Quick Start Guide

#### Contents

- [1 Overview](#)
- [2 What's in the box](#)
- [3 Camera Overview](#)
- [4 Installation](#)
- [5 Basic Operation](#)
- [6 Menu Settings](#)
- [7 Video Recording](#)
- [8 Video Playback](#)
- [9 Parking Monitor](#)
- [10 GPS Logger](#)
- [11 Taking Photos](#)
- [12 Documents / Resources](#)
  - [12.1 References](#)
- [13 Related Posts](#)

### Overview





Thank you for choosing REXING! We hope you love your new product as much as we do. If you need assistance or have any suggestions to improve it, please contact us. You can reach us via

[care@rexingusa.com](mailto:care@rexingusa.com) or call us at (203) 800-4466. Our support team will respond you as soon as possible. Always a surprise in Rexing. Check us out here.

<https://www.facebook.com/rexingusa/>  
<https://www.instagram.com/rexingdashcam/>  
<https://www.rexingusa.com/support/registration/>

Facebook	Instagram	
		
<a href="https://www.facebook.com/rexingusa/">https://www.facebook.com/rexingusa/</a>	<a href="https://www.instagram.com/rexingdashcam/">https://www.instagram.com/rexingdashcam/</a>	<a href="https://www.rexingusa.com/support/registration/">https://www.rexingusa.com/support/registration/</a>

What’s in the box

1.  

2.  

3.  

4.  


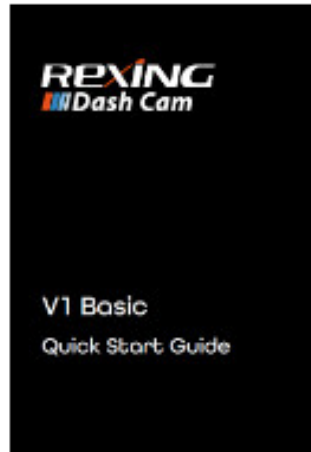
5.



6.



7.

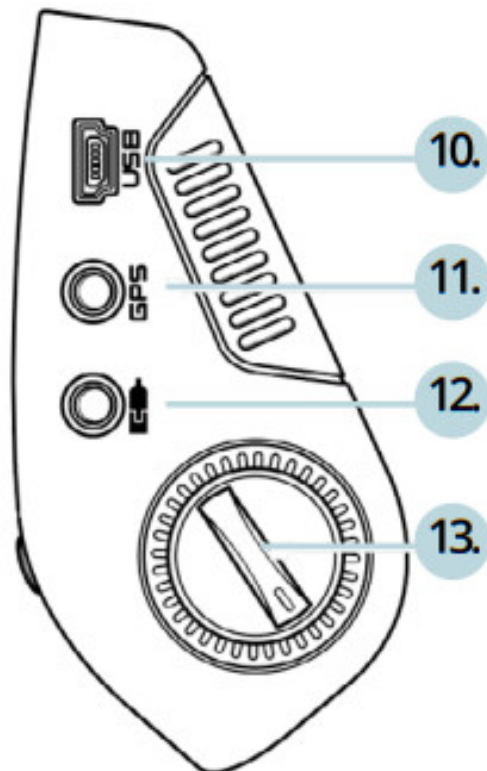
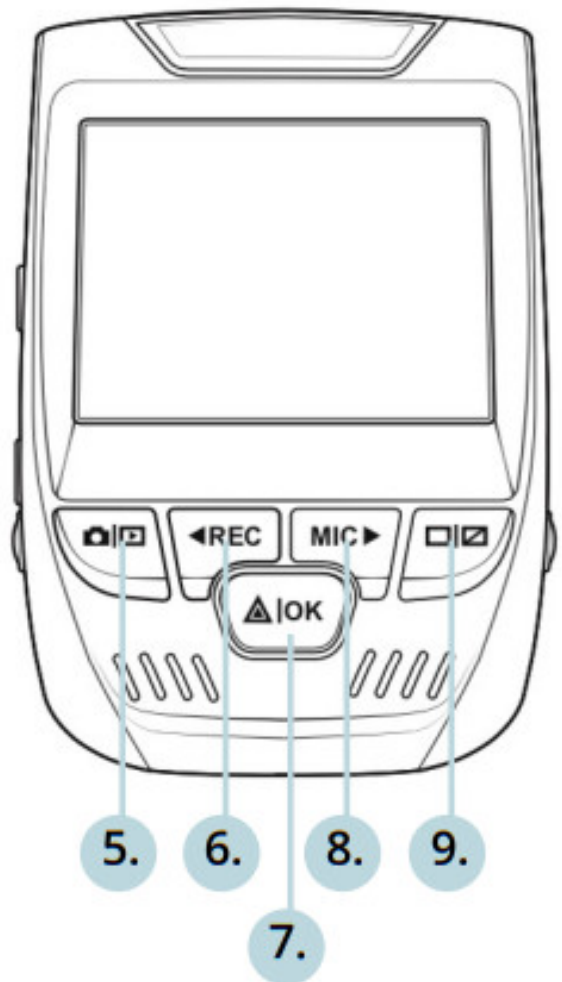
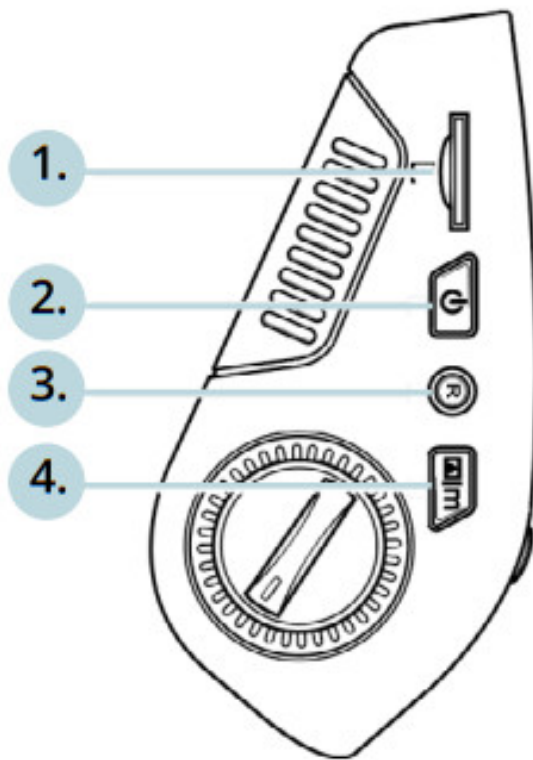


8.



1. Rexing V1 Basic Dash Cam
2. Car Charger
3. Dash Cam Mount Plate & 3M Adhesive
4. Mini-USB Cable
5. Cable Management Tool
6. Cable Clips©
7. V1 Basic Quick Start Guide
8. Safety Guide

## Camera Overview



1. Micro SD Card Slot
2. Power Button
3. Reset Button
4. Menu Button
5. Mode Button
6. REC (Record) Button \*
7. OK (Confirm) Button \*\*

8. MIC (Microphone) Button \*\*\*
9. Screen Button
10. Mini-USB Port
11. GPS Logger Port
12. Rear Camera Port (Not Support)
13. Lens Angle Adjustment

\* The Camera is recording when the LED is flashing red.

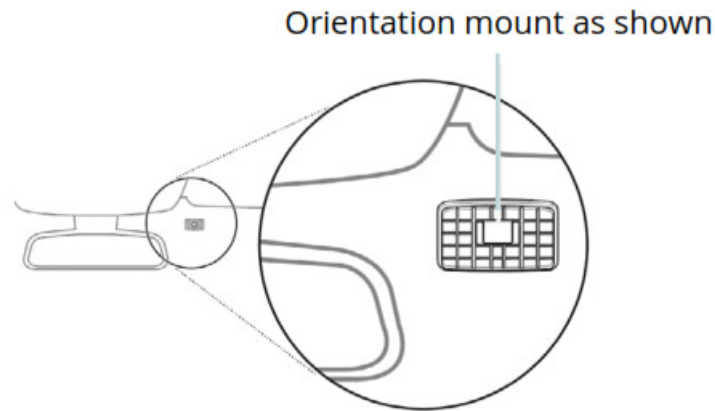
\*\* The Camera is recording when the LED is flashing red. The device charges or is powered on when the LED is solid blue.

\*\*\* The device is charging or powered on when the LED is solid blue.

## Installation

### Step 1: Install the Dash Cam

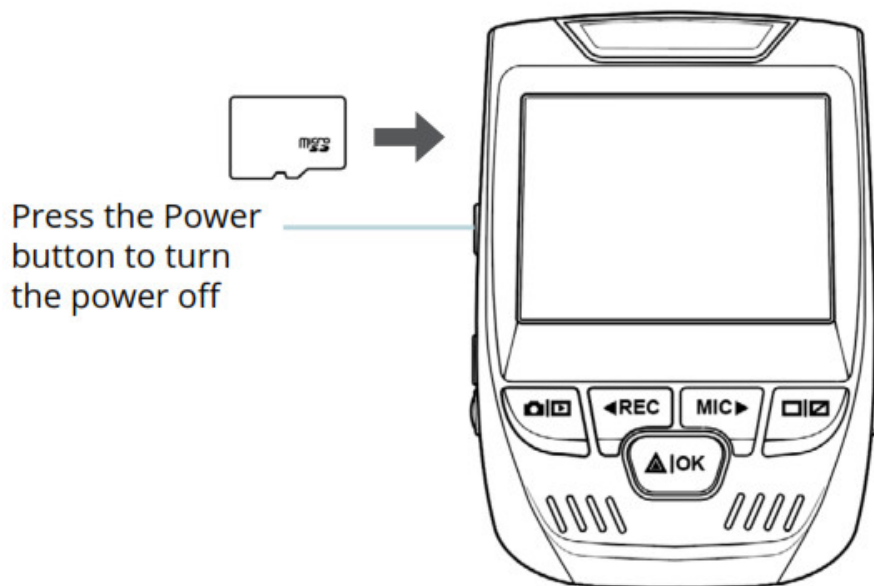
Place the 3M adhesive on the mount and properly orient the mounting straight to the roof and hood line of the vehicle. Important! Ensure the T-interlock on the Mount is oriented in the correct direction (as shown below). Firmly press the mount onto the windshield. Wait at least 20 minutes before mounting the camera.



### Step 2: Insert the Memory Card

The Rexing V1 Basic accepts [Class 10/ UHS-1 or higher] Micro SD memory cards up to 256 GB. You will need to insert a memory card before you can begin recording. Before inserting or removing a memory card, first ensure you've powered down the device.

Gently push the memory card in until you hear a click, and allow the spring release to push the card out.



### Step 3: Power the Camera and Format the Memory Card

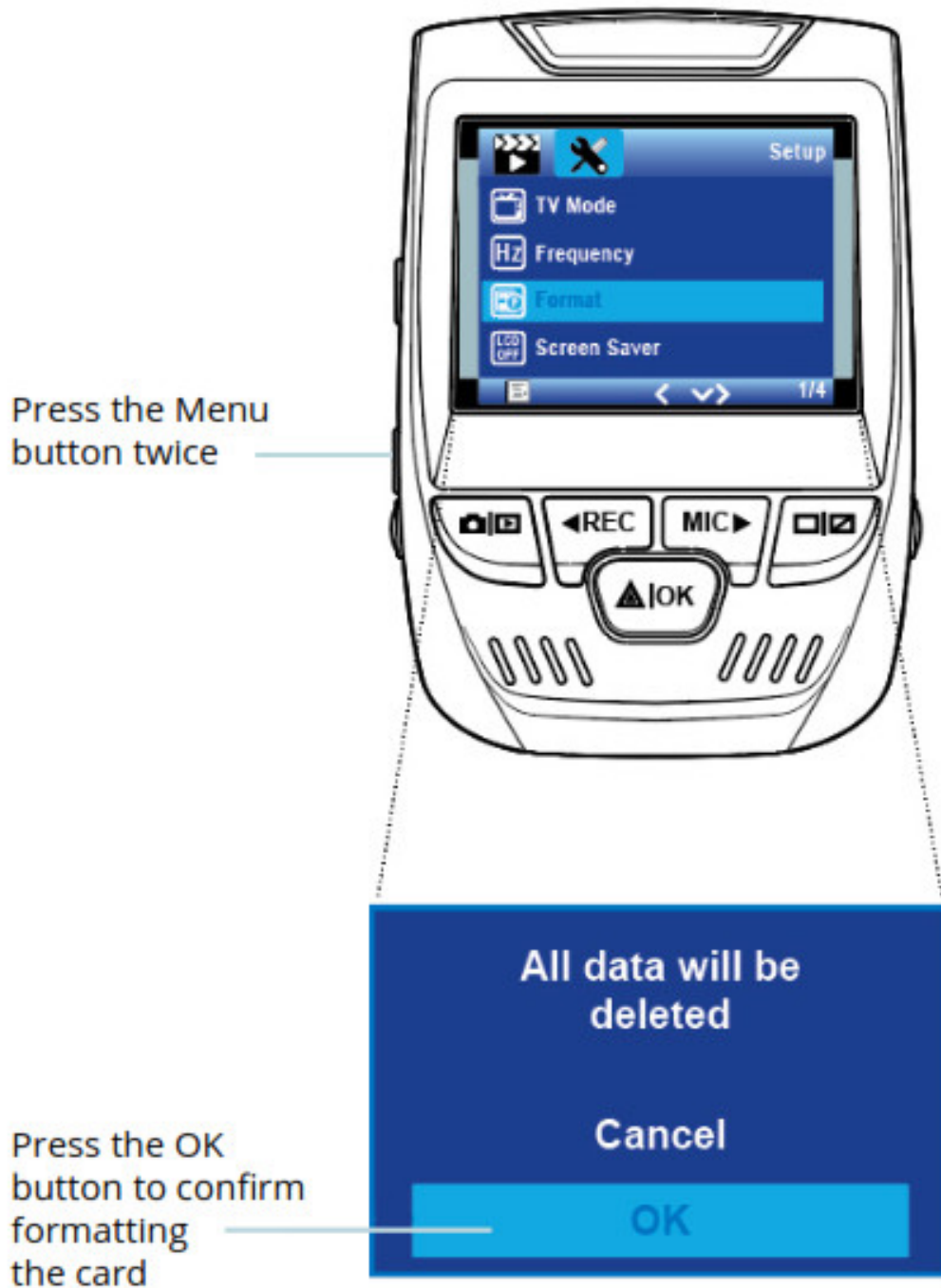
Power the camera by connecting the charger to the car cigarette lighter and camera.

To ensure the V1 Basic records to your memory card properly and without error. Before you start using a new memory card, you must format the card within the camera using the format function. Always back up important data stored on the memory card before formatting.

To format the memory card, make sure you have inserted your memory card, then turn on the device by connecting to a power source. Press REC to stop recording. Then press the MENU button twice to enter the

System Setup Menu. Use the REC and MIC buttons and go to the Format setting. Press the OK Button to confirm the selection.

You may now disconnect from power. The camera will shut down after 3 seconds. The camera should begin recording automatically the next time it is powered on.



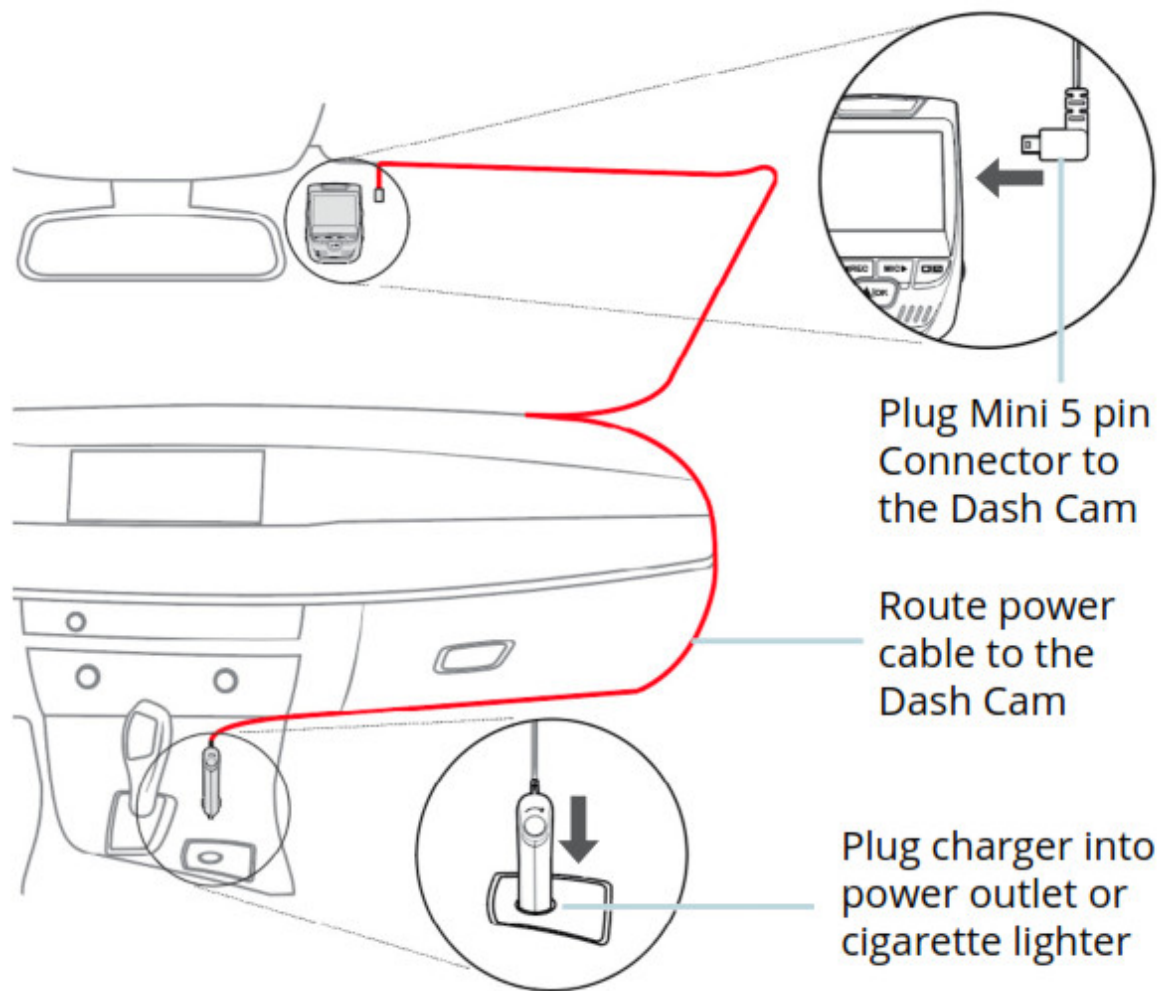
#### Step 4: Installing the Camera onto the Windshield

Place the camera on the mount and carefully route the power cable around the windscreen and tuck in under the trim.

Plug the Car Charger Cable into a 12V DC power outlet or the car cigarette lighter.

Connect car charger to the camera. The camera will auto-start the recording once powered on.





## Basic Operation

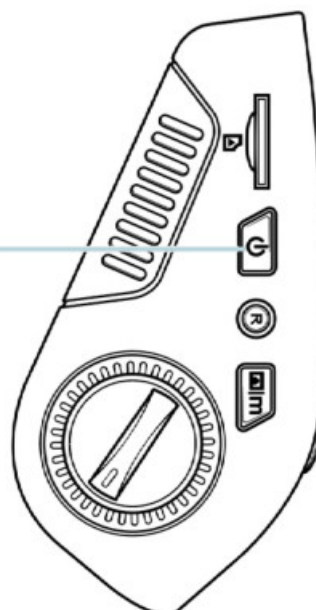
### Device Power

The device is automatically powered on when plugged into a 12V accessory socket or cigarette lighter and receives a charge (i.e.: the vehicle is started.)

To turn the device on manually, press and hold the POWER button until the welcome screen appears.

The camera will automatically start recording when powered on.

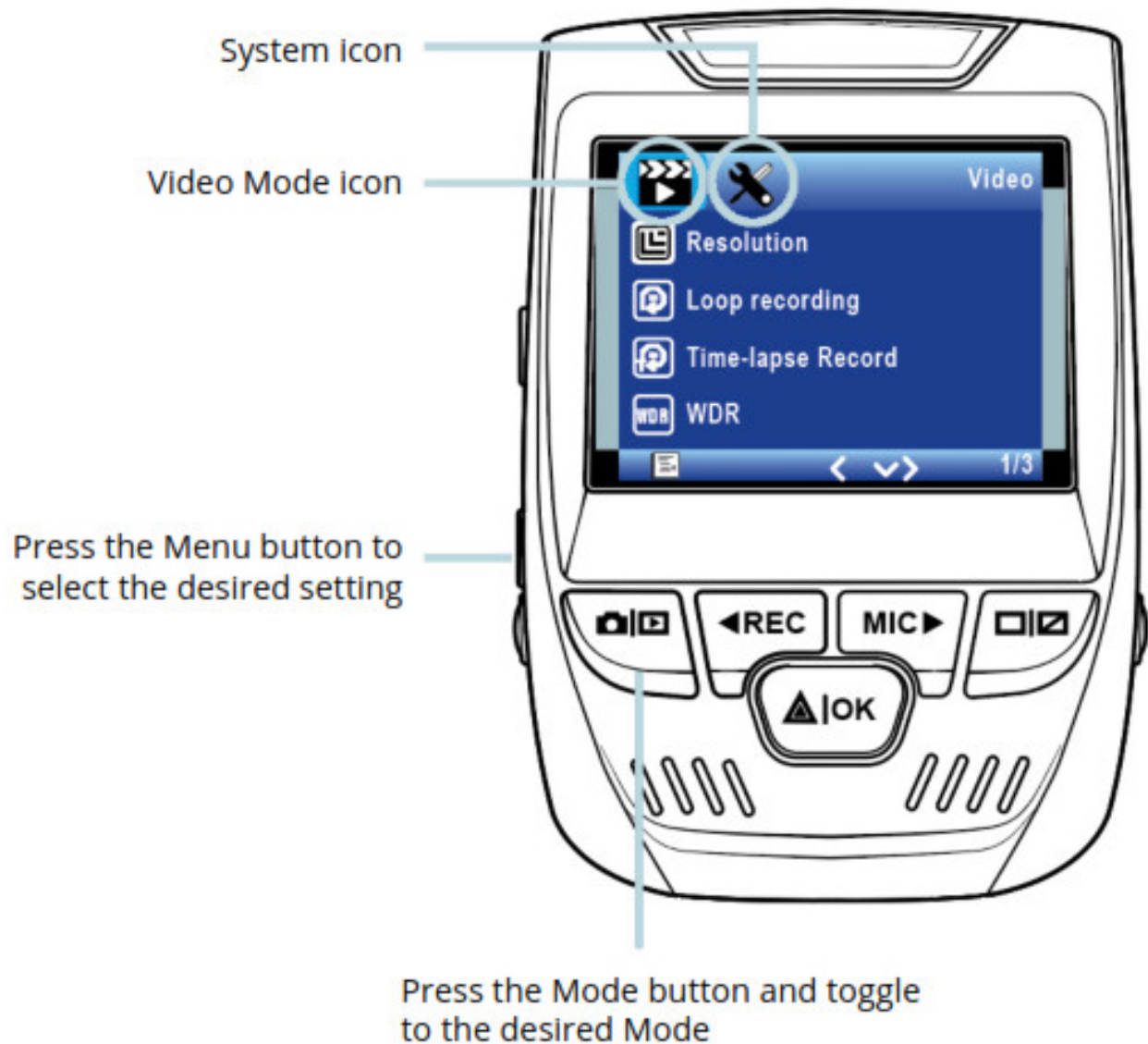
Press an hold the POWER button to turn the device on manually



## Menu Settings

Power the camera on. If the camera is recording, press the REC button to stop recording. Press the MODE button and toggle to the desired mode.

Press the MENU button once to enter the settings menu for a Mode. Press the MENU button twice to enter the System Settings.



## Video Recording

The camera will automatically start recording when the device receives a charge. The LED lights and the red dot will blink when the device is recording. Press the REC button to stop recording.





The camera automatically start recording when powered on

### Video Playback

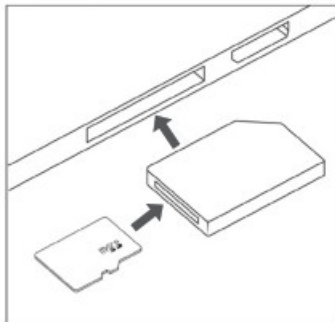
Playback of videos can be done on the device or a computer. Also, if you have purchased a Rexing GPS Logger you may playback the recordings in a specialized application.

## Playback mode

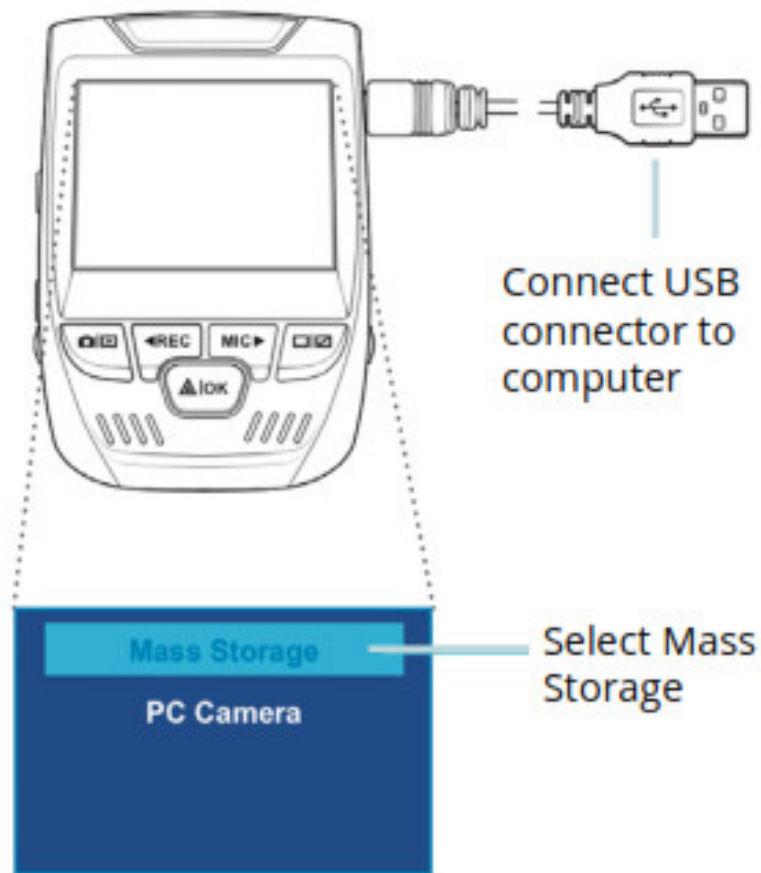


## Control playback with these buttons

To playback, a video on the device, toggle to the Playback mode. Use the REC and MIC buttons to toggle to the desired video. Press the OK button to play. During playback use the OK (pause), MIC (fast forward), and REC (rewind) buttons to control the video playback. To playback, a video on the computer either uses an SD card adapter or connects the device to the computer directly using the USB to Mini B 5pin male cable.



To playback, a video using an SD card adapter, remove the memory card and insert it into an SD card adapter. Place the adapter in the computer.



To playback, a video using USB to Mini B 5pin male cable, connect the USB to Mini B 5pin Male Cable to the device and the USB connector to the computer.

After the device powers up, press the OK Button to select Mass Storage. On the computer, navigate to the device drivers. The videos are stored at \CARDV\ MOVIE.

Select the video to playback.

## Parking Monitor

You can enable the parking monitor function through the setup option.

## GPS Logger

(Need to purchase separately. **ASIN: B07BL4NCMD**)

GPS Signal  
(not connected)



When connected to the camera, it will record the speed and location of your vehicle as you drive.

GPS Signal  
(searching)



You can then access this information while playing back your recordings using the GPS Video player (For Windows and Mac, available at [rexingusa.com](http://rexingusa.com)).

Press the MENU button twice and enter the System Settings.

Toggle to the GPS Speed Unit setting and select your preferred speed unit.

GPS Signal  
(active)



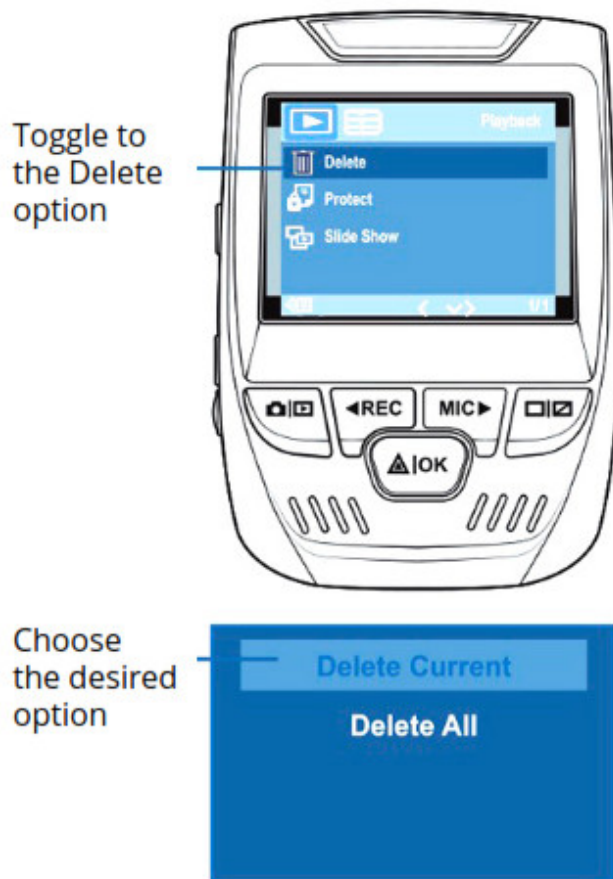
After a GPS signal is found, the screen icon will turn from blue to green. Please visit [gpsa.rexingusa.com](https://gpsa.rexingusa.com) to watch a video tutorial.

## Taking Photos

Toggle  
to the  
Playback  
mode and  
select a  
photo to  
view



**To take a photo**, stop video recording and toggle to the Photo Mode. Press the OK Button to take a photo.



**To view a photo**, stop video recording and toggle to the Playback Mode. Press the REC and MIC Buttons to toggle through your photos.

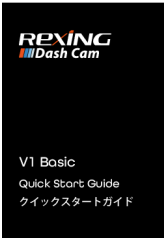
#### **To delete a photo,**

stop video recording and toggle to the Playback Mode and toggle through the videos and photos to the one you want to delete.

Press the MENU button once and toggle to the Delete option.

Press the OK Button and select Delete Current or Delete All.

## **Documents / Resources**

	<p><a href="#">ReXING Dash Cam V1 Basic</a> [pdf] User Guide Dash Cam, V1, Basic, ReXING</p>
---	--

## **References**

- [GPS Player Type A](#)
- [Rexing USA | Your Roadside Eyewitness](#)
- [Yuhe Sun \(@rexingdashcam\) • Instagram photos and videos](#)
- [Rexing USA](#)