

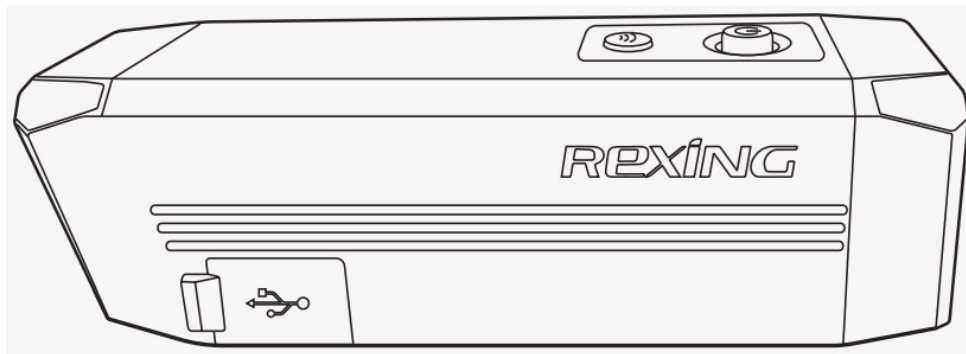


REXING A1 Action Camera User Manual

[Home](#) » [Rexing](#) » REXING A1 Action Camera User Manual 

REXING

A1 Action Camera
USER MANUAL



Contents

- [1 Overview](#)
- [2 What's in the Box](#)
- [3 Definition of Indicator Lights, Keys, and Camera Vibration](#)
- [4 Camera Vibration](#)
- [5 Specification](#)
- [6 Installation](#)
- [7 Basic Operations](#)
- [8 Warranty and Disclaimers](#)
- [9 Documents / Resources](#)
- [10 Related Posts](#)

Overview

Thank you for choosing **REXING!** We hope you love your new product as much as we do. If you need assistance or have any suggestions to improve it, please contact us. You can reach us via care@rexingusa.com or call us at **(203) 800-4466**. Our support team will respond to you as soon as possible. jpcare@rexingusa.com

Always a surprise in Rexing. Check us out here.

<https://www.facebook.com/rexingusa/>

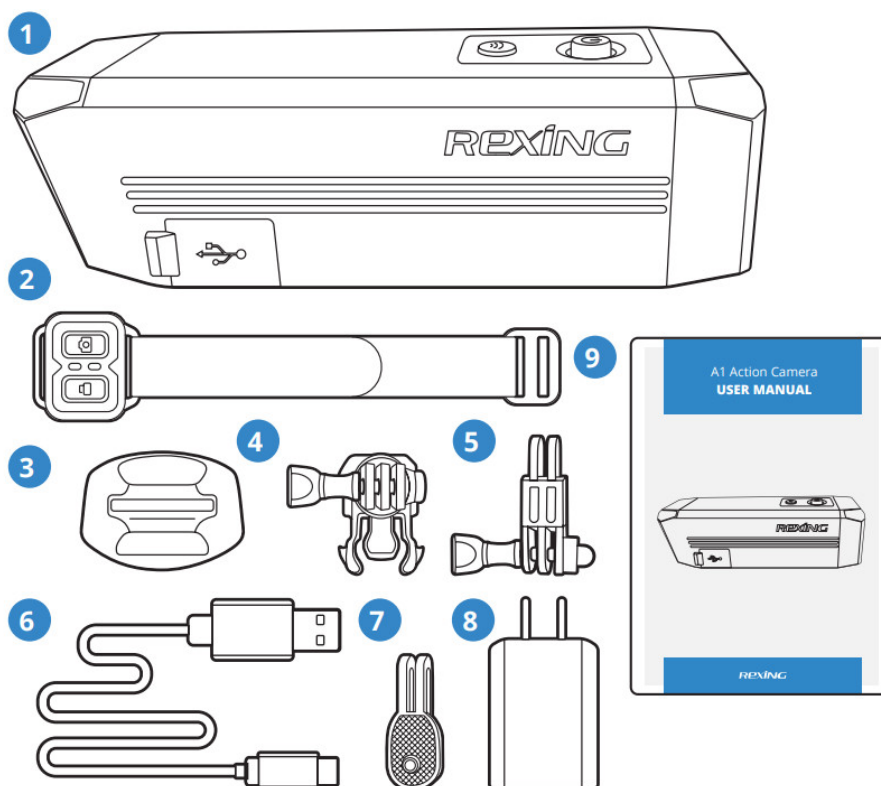
<https://www.instagram.com/rexingdashcam/>

<https://www.rexingusa.com/support/registration/>

<https://www.rexingusa.com/support/product-support/>

Facebook	Instagram	Instagram	Product Support
 https://www.facebook.com/rexingusa/	 https://www.instagram.com/rexingdashcam/	 https://www.rexingusa.com/support/registration/	 https://www.rexingusa.com/support/product-support/

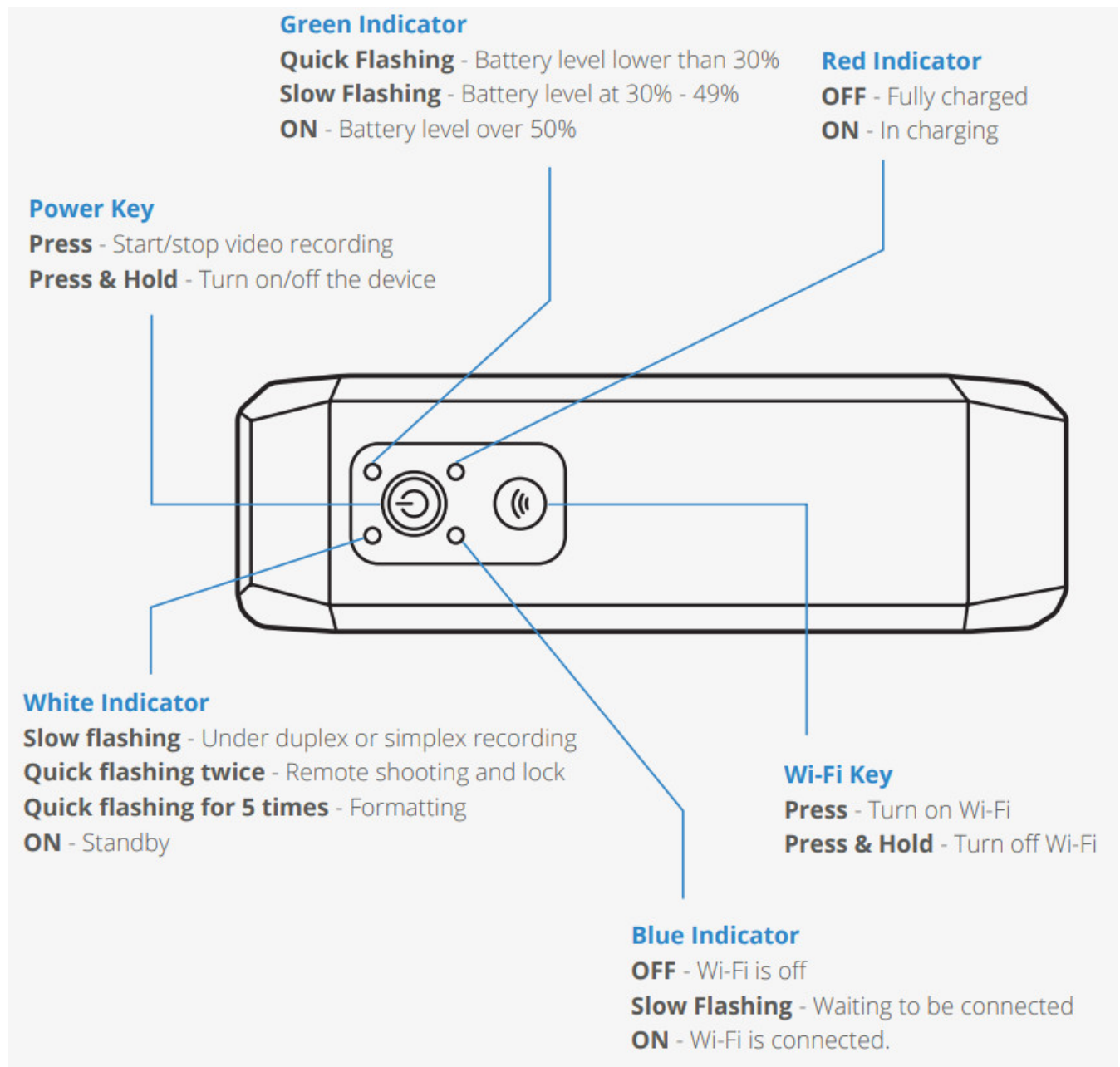
What's in the Box

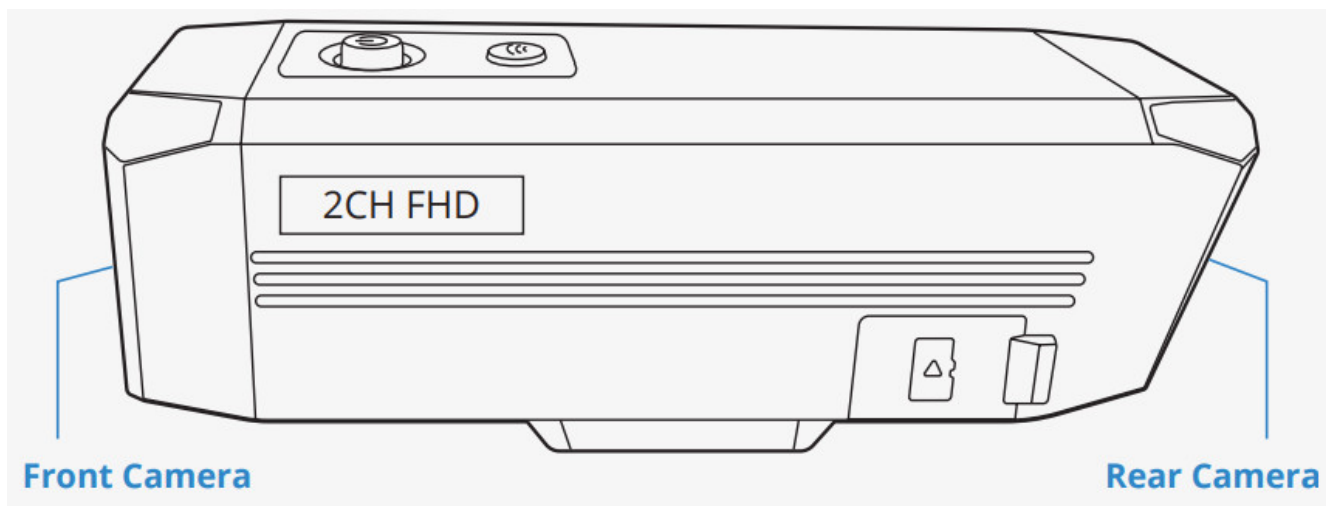


01 A1 Action Camera
02 Remote Control
03 Adhesive Mount
04 Mounting Buckle with Thumb Screw

05 Pivot Arm with Thumb Screw
06 USB to Micro USB Cable
07 Quick Release Plate
08 Charger
09 User Manual

Definition of Indicator Lights, Keys, and Camera Vibration





Camera Vibration

Vibrating once	1 The device turns on. To turn on the action camera, release the key once it vibrates. 2 The valid operation: starting/stopping video recording, Wi-Fi, etc. (excluded shutdown and formatting) 3 Remote operation
Vibrating for 5 times	1 Memory card formatted. 2 Device error.
Long vibration for 2 times	Power off (including manual, automatic, and low battery shutdown)

Specification

MODEL	A1
RESOLUTION	Simplex 2560*1440 30fps Duplex 1920*1080 30fps
BODY DIMENSION	4" x 1.2" x 1.2"
WEIGHT	3.5 oz
VIDEO FORMAT	.mp4
MEMORY	Micro SD, up to 256G, Class 10
AUDIO INPUT	Built-in microphone
IMAGE SENSOR	SONY IMX307 x 2

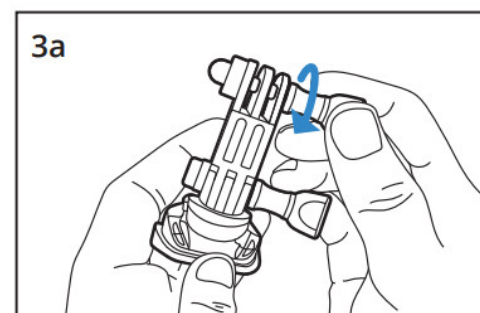
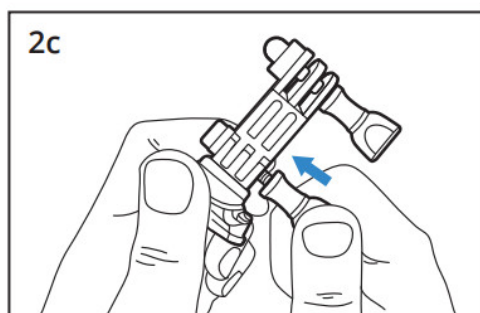
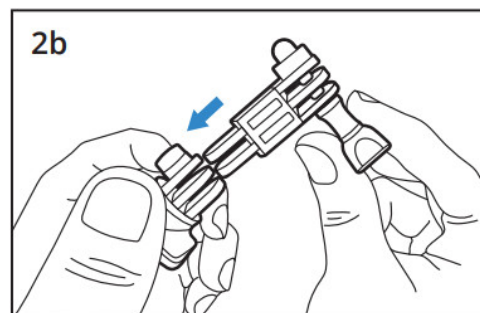
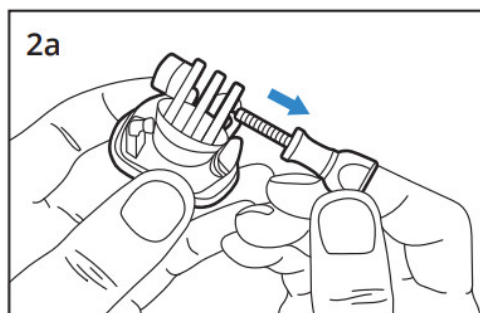
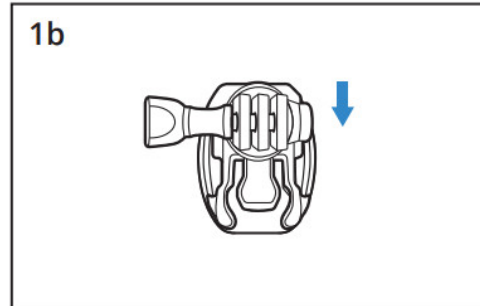
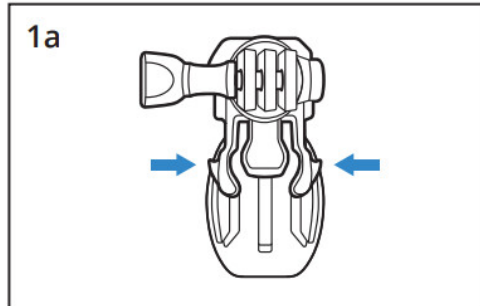
Installation

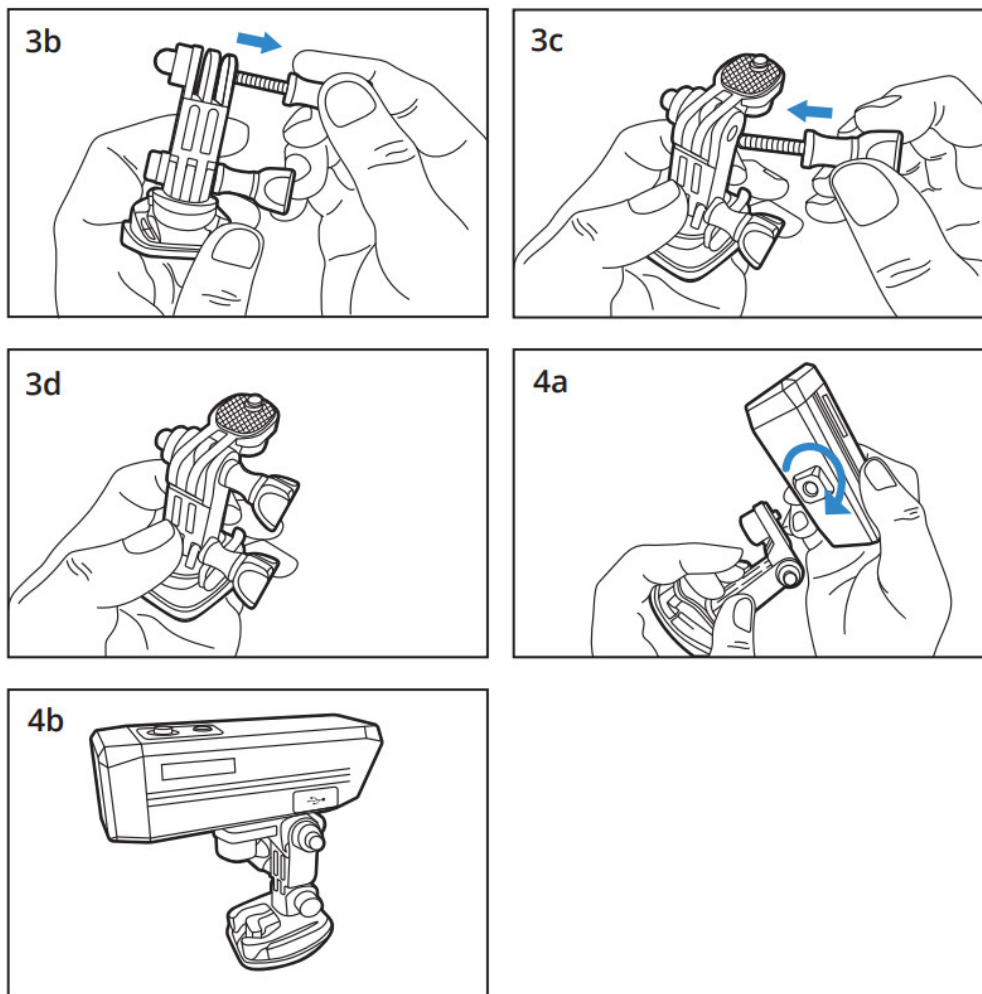
Get Started

1. Take out the device and Micro USB cable.
2. Connect the charger and computer with a USB cable to charge the recorder.
3. The **Red Indicator** will be ON while charging and OFF after charging is complete.
4. If the battery runs out of power during use, the device turns off automatically.

Micro SD Card Instructions

1. Open the waterproof cover cap from the Micro SD card slot.
2. Insert a high-speed Micro SD card (Class 10 or above) according to the direction indicated on the slot.
3. Close the card slot cover cap.
4. DO NOT insert or remove the Micro SD card when the device is turned on.





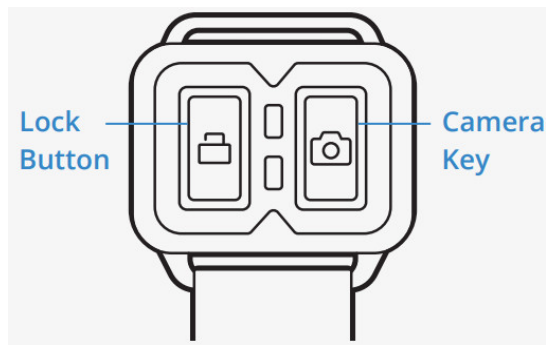
Basic Operations

Operation

1. Press the **Power key** to turn on the device (the device vibrates once).
2. Once ON, the recorder automatically enters video mode and starts recording (white indicator flashed). Press the **Power Key** to stop recording (the camera vibrates once).
3. After the recorder is turned on, Wi-Fi will be activated automatically and the blue indicator flashes at the same time. If the connection is not established with a cellphone within 1 minute, Wi-Fi will turn off. Upon successful connection with a cellphone, the blue Wi-Fi indicator light turns on (**Note:** After the **Wi-Fi Key** is held down for 5 seconds, Wi-Fi will not be turned on automatically at the next booting.)
4. Press **Power Key** again the power key to turn the device off (the camera vibrates twice).
5. Press the **Power Key** continuously for 5 times, and the card will be formatted. The white indicator will flash 3 times and the camera vibrates 5 times.
6. **Power Saving Mode:** Even if the camera is ON/recording, it will turn itself off if there is no motion detected for 5 minutes.

Using the Remote Control

1. The action camera automatically pairs with its remote control after starting.
2. Pressing the Lock Button of the remote control, its red indicator light will flash once and the device's white indicator will flash twice and the video file under-recording will be locked and saved.



3. Pressing the **Camera Key** of the remote control, its green light flashes once and the white indicator of the device will flash twice and a picture will be taken.
4. The remote control uses ONE CR2032 battery.

APP Operation

1. Download the RexingConnect APP via the Appstore/Playstore to your cell phone.
2. Search for REXING_xxxxxxxxxxx with your phone. Wi-Fi password: 12345678
3. After successful connection, it returns to the APP homepage and you are allowed to preview the videos & images in real-time.
4. The mode can be changed via the keys: Playback, Record, Camera, and Change View.
5. Click the lower-right settings icon to set up the action camera: Wi-Fi Password, Audio Recording, Date Stamp, Loop Recording, G-sensor sensitivity, Video Resolution, Formatting the Memory Card, and Reset Default Settings.

Customer Protection Customer Service



Warranty and Disclaimers

Warranty

Up to 18 MONTHS LIMITED WARRANTY

Your product is warranted to be free of defects in materials and workmanship for 1 year after the date of purchase. This warranty does not cover damages caused by misuse, improper handling, and installation. Register your B1 at RexingUSA.com to extend the warranty. In the event warranty service is needed, please contact Rexing at care@rexingusa.com

Disclaimers

We have no representations or warranties, either expressed or implied, by or concerning any content of these written materials or software, or for damages resulting from the use of the information contained therein. We reserve the right to alter the features and contents of this publication, hardware, or software without obligation or advance notice. Warranty does not extend to any accessories used with the camera. We are not responsible if you use the trail camera for illegal purposes. We shall not be obligated to perform preventative maintenance, installation, reinstallation, or maintenance. The illustrations in this manual are for instructional purposes only and may not represent the actual product exactly.



www.rexingusa.com

New York office address:

131 West 33rd St 11 C, New York, NY 10001

Connecticut office address:

264 Quarry Rd unit d, Milford, CT 06460



Safety Guide

www.rexingusa.com

Warning

This device complies with Part 15 of the FCC Rules. Operation is subject to the following two conditions: (1) this device may not cause harmful interference, and (2) this device must accept any interference received, including interference that may cause undesired operation.

Changes or modifications not expressly approved by the party responsible for compliance could void the user's authority to operate the equipment.

NOTE:

This equipment has been tested and found to comply with the limits for a Class B digital device, pursuant to Part 15 of the FCC Rules. These limits are designed to provide reasonable protection against harmful interference in a residential installation. This equipment generates uses and can radiate radio frequency energy and, if not installed and used in accordance with the instructions, may cause harmful interference to radio communications. However, there is no guarantee that interference will not occur in a particular installation. If this equipment does cause harmful interference to radio or television reception, which can be determined by turning the equipment off and on, the user is encouraged to try to correct the interference by one or more of the following measures:

- Reorient or relocate the receiving antenna.
- Increase the separation between the equipment and receiver.
- Connect the equipment into an outlet on a circuit different from that to which the receiver is connected.
- Consult the dealer or an experienced radio/TV technician for help.

NOTE:

This device and its antenna(s) must not be co-located or operation in conjunction with any other antenna or transmitter.

RF Exposure Statement

To maintain compliance with FCC's RF exposure guidelines, This equipment should be installed and operated with a minimum distance of 20cm the radiator your body. This device and its antenna(s) must not be co-located or operation in conjunction with any other antenna or transmitter.

Safety Information

To prevent injury to yourself or others and damage to your device, read all safety information before using it.



Warning

Failure to comply with safety warnings and regulations can result in serious injury or death.

Rexing Dash Cam is not intended to be touched, modified, or calibrated while operating a vehicle. Rexing is not responsible for any damages resulting from the user's misuse of the camera.

Do not use damaged power cords or plugs or loose electrical sockets. Faulty connections can cause electric shock or fire.

Do not touch the car charger with wet hands or disconnect the charger by pulling the cord. Doing so may

result in electrocution.

Do not use a bent or damaged car charger. Doing so may cause electric shock or fire.

Do not use your device while it is charging or touch your device with wet hands. Doing so may cause electric shock.

Do not short-circuit the charger or the device. Doing so may cause electric shock or fire.

Use only manufacturer-approved chargers, accessories, and supplies.

- Using generic chargers may shorten the life of your device or cause the device to malfunction. They may also cause designed for your device.
- Using an incompatible charger can cause serious personal injury or damage to your device.
- Rexing cannot be responsible for the user's safety when using accessories or supplies that are not approved by Rexing.

Do not drop the charger or device or subject them to impact.

Handle and dispose of the charger and device with care.

- Never crush or puncture the device.
- Never place the device in or on heating devices, such as microwave ovens, stoves, or radiators. The device may explode if overheated. Follow all local regulations when disposing of a used device.
- Avoid exposing the device to high external pressure which can lead to an internal short circuit and overheating.

Protect the device and charger from damage.

- Avoid exposing your device to excessive cold or heat. Extreme temperatures can damage the device and reduce the charging capacity and life of your device.
- Do not allow children or animals to bite or chew the device. be a choking hazard. If children use the device, make sure they use the device properly.
- Never use a damaged charger.



Caution

Failure to comply with safety precautions and regulations can result in property damage, serious injury, or death.

Do not use your device near other electronic devices. Most electronic devices use radio frequency signals. Your device may interfere with other nearby electronic devices.

Do not use your device near other devices that emit radio signals, such as sound systems or radio towers. Radio signals from these may cause your device to malfunction.

Do not expose the device to heavy smoke or fumes. Doing so may damage the outside of the device or cause it to malfunction.

If you notice strange smells or sounds coming from your device, or if you see smoke or liquid leaking from the device, stop using the device immediately and take it to a Rexing Service Center. Failure to do so may result in fire or explosion.

For your own safety, do not operate the controls of this product while driving. The window mount is needed when using the recorder in a car. Make sure you place the device in a location where it won't obstruct the driver's view.

Always keep the camera lens clean, and ensure that the lens is not blocked by any object or placed near any reflective material. If the windshield of the car is tinted with a dark coating, recording quality may be affected.

Do not store your device in excessively hot, cold, damp, or dry locations. Doing so may cause the screen to

malfunction or result in damage to the device.

If your device becomes overheated, allow it to cool down before use. Prolonged exposure of skin to an overheated device may cause low-temperature burn symptoms, such as red spots or areas of darker pigmentation.

Install mobile devices and equipment with caution.

- Ensure that any mobile devices or related equipment installed in your vehicle are securely mounted.
- Avoid placing your device and accessories in or near an airbag deployment area. Improperly installed wired equipment can cause serious injury in a situation where airbags inflate rapidly.

Do not drop your device or subject your device to impact. If the device is bent, deformed, or damaged, a malfunction may occur.

Your device may wear out over time. Some parts and repairs are covered by the warranty within the validity period, but damage or deterioration related to the use of unapproved accessories is not.

Do not attempt to disassemble, repair, or modify your device.

- Any changes or modifications to your device can void your manufacturer's warranty.

Clean your device and charger by wiping with a towel or eraser. Do not use chemicals or detergents. Doing so can discolor or corrode the outside of the device and may result in electric shock or fire.

Do not distribute copyright-protected material. Doing so without the permission of the content owners may violate copyright laws. The manufacturer is not responsible or liable for any legal issues that result from the user's illegal use of copyrighted material.

Correct Disposal of This Product

(Applicable in countries with separate waste collection systems)



Waste Electrical & Electronic Equipment

This symbol found on the device, accessories, or accompanying literature indicates that the product and its electronic accessories (e.g. charger, headset, USB cable) should not be disposed of with other household waste.

To prevent possible harm to the environment or human health from uncontrolled waste disposal, **please separate these items from other types of waste and recycle them responsibly to promote the sustainable reuse of material resources.**

Household users should contact either the retailer where they information on where and how they can take these items for environmentally safe recycling.

Business users should contact their suppliers and check the terms and conditions of the purchase contract. This product and its electronic accessories should not be mixed with other commercial wastes for disposal.

Disclaimer

Some content and services accessible through this device belong to third parties and are protected by copyright, patent, trademark, and/or other intellectual property laws. Such content and services are provided solely for your personal noncommercial use.


You may not use any content or services in a manner that has not been authorized by the content owner or service provider. Without limiting the foregoing, unless expressly authorized by the applicable content owner or service provider, you may not modify, copy, republish, upload, post, transmit, translate, sell, create derivative works, exploit, or distribute in any manner or medium any content or services displayed through this device.

“THIRD-PARTY CONTENT AND SERVICES ARE PROVIDED “AS IS.” REXING DOES NOT WARRANT CONTENT OR SERVICES SO PROVIDED, EITHER EXPRESSLY OR IMPLIED, FOR ANY PURPOSE. REXING EXPRESSLY DISCLAIMS ANY IMPLIED WARRANTIES, INCLUDING BUT NOT LIMITED TO, WARRANTIES OF MERCHANTABILITY OR FITNESS FOR A PARTICULAR PURPOSE. REXING DOES NOT GUARANTEE THE ACCURACY, VALIDITY, TIMELINESS, LEGALITY, OR COMPLETENESS OF ANY CONTENT OR SERVICE MADE AVAILABLE THROUGH THIS DEVICE AND UNDER NO CIRCUMSTANCES, INCLUDING NEGLIGENCE, SHALL REXING BE LIABLE, WHETHER IN CONTRACT OR TORT, FOR ANY DIRECT, INDIRECT, INCIDENTAL, SPECIAL OR CONSEQUENTIAL DAMAGES, ATTORNEY FEES, EXPENSES, OR ANY OTHER DAMAGES ARISING OUT OF, OR IN CONNECTION WITH, ANY INFORMATION CONTAINED IN OR AS A RESULT OF THE USE OF ANY CONTENT OR SERVICE BY YOU OR ANY THIRD PARTY, EVEN IF ADVISED OF THE POSSIBILITY OF SUCH DAMAGES.”

Third-party services may be terminated or interrupted at any time, and Rexing makes no representation or warranty that any content or service will remain available for any period of time. Content and services are transmitted by third parties by means of networks and transmission facilities over which Rexing has no control. Without limiting the generality of this disclaimer, Rexing expressly disclaims any responsibility or liability for any interruption or suspension of any content or service made available through this device.

Rexing is neither responsible nor liable for customer service related to the content and services. Any question or request for service relating to the content or services should be made directly to the respective content and service providers.

Documents / Resources

	<p>REXING A1 Action Camera [pdf] User Manual A1, 2AW5W-A1, 2AW5WA1, Action Camera, A1 Action Camera, Camera</p>
---	---