



Revopoint 3D Dual-axis 3D Scanner Turntable User Guide

[Home](#) » [Revopoint 3D](#) » Revopoint 3D Dual-axis 3D Scanner Turntable User Guide 

Contents

- [1 Revopoint 3D Dual-axis 3D Scanner Turntable](#)
- [2 Windows/Mac Application](#)
- [3 Android Application](#)
- [4 Documents / Resources](#)
 - [4.1 References](#)
- [5 Related Posts](#)

REVOPOINT

Revopoint 3D Dual-axis 3D Scanner Turntable



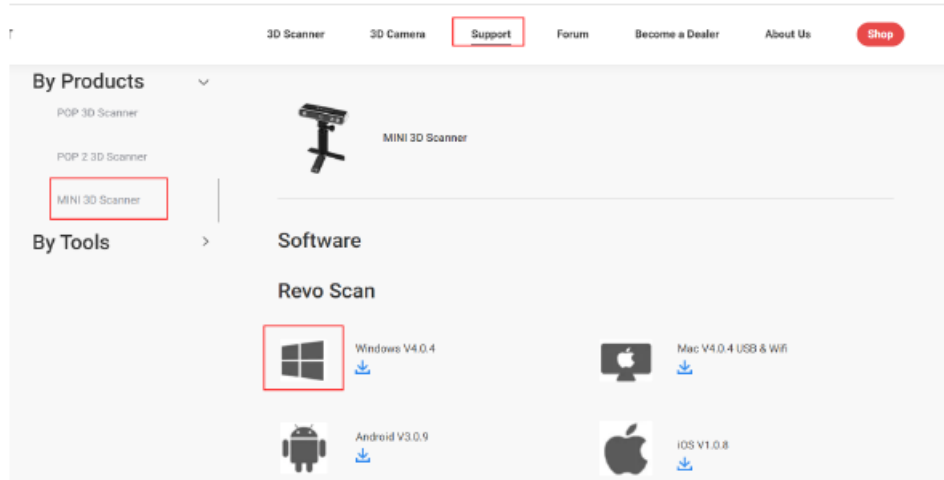
Windows/Mac Application

1. Downloading the Software

Please download the latest version of Revo Scan at <https://www.revopoint3d.com/download-2/>

Note:

For Windows, Revo Scan V 4.1.0 and above support the Dual-axis Turntable. For macOS, the Revo Scan V 4.1.0 and above support the Dual-axis Turntable.

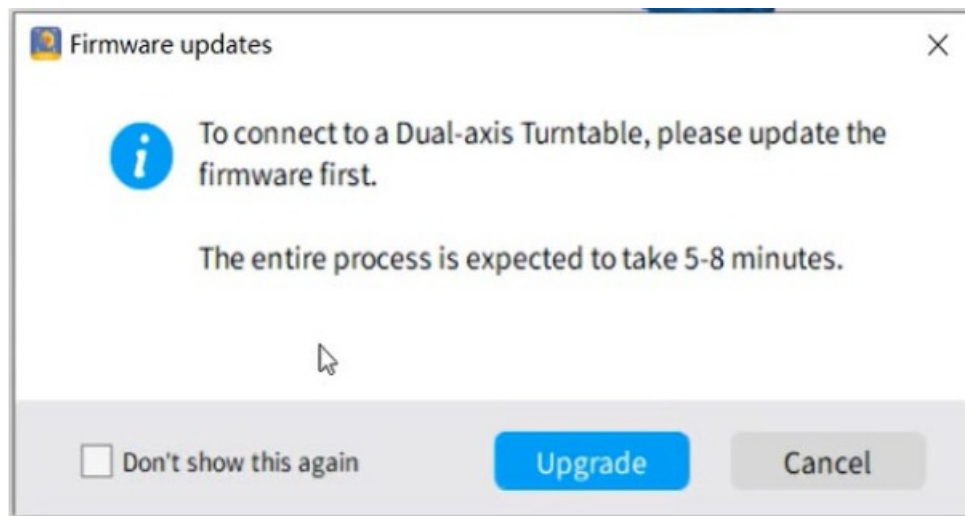


2. Connect the scanner via USB to a laptop and double-click to open Revo Scan.

3. Updating the firmware.

Firmware updates are only supported via a USB connection.

1. After connecting the 3D scanner, this pop-up will ask you to update your scanner's firmware.



2. Click the "Upgrade" button, and the new firmware will be downloaded and installed automatically. Please follow the prompts to finish the firmware update. Once finished, the following window will pop up. And the 3D scanner will restart automatically.

4. Powering on the Dual-axis Turntable

Connect the Dual-axis Turntable to a power outlet. Please note that the Dual-axis Turntable requires at least 12V, 2A to work.

Once powered on, the Dual-axis Turntable will reset automatically.



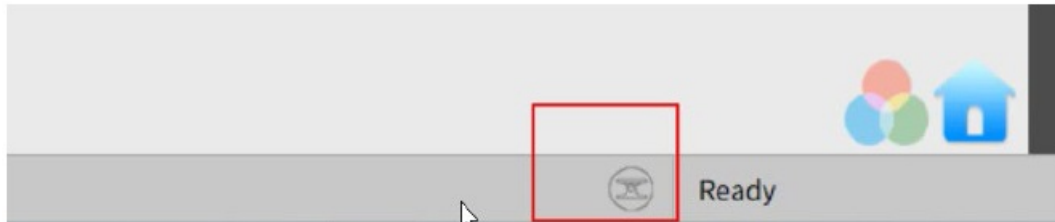
5. Entering Bluetooth Pairing Mode

When the LED flashes green continuously, it's ready for pairing.

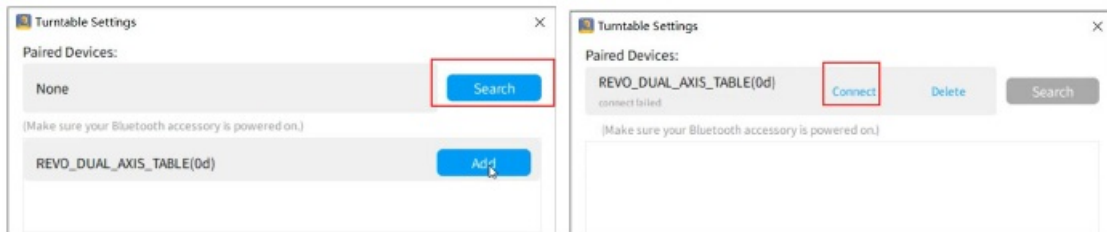


6. Pairing the Dual-axis Turntable and your 3D Scanner

1. Open Revo Scan and click the Dual-axis Turntable icon on the status bar.



2. Click Search, and wait for the Dual-axis Turntable to be discovered.
3. Click “Add” to add Dual-axis Turntable to the Paired Devices list.
4. Finally, click “Connect” to complete the process. When the turntable's LED is solid green, it's connected.

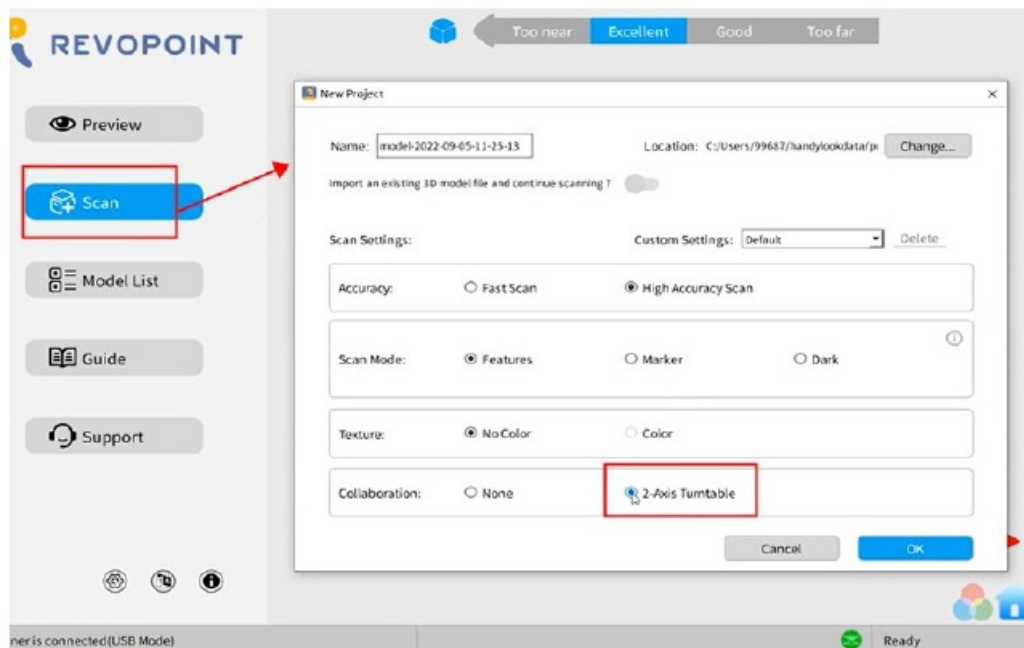


Note:

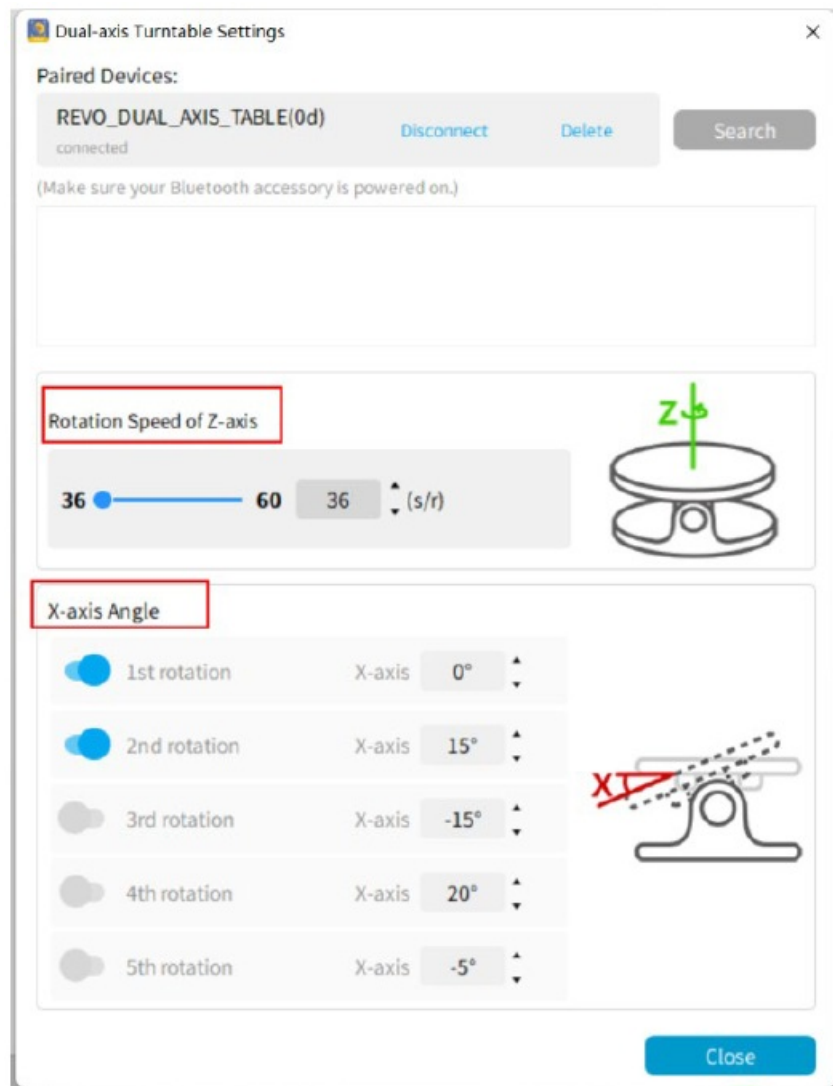
1. Reset the Dual-axis Turntable by double click the on/off button, and the Bluetooth keeps connection.
2. Press the on/off button on the Dual-axis Turntable, disconnect the Bluetooth.

7. Start Scanning with the Dual-Axis Turntable

1. Click on the “Scan” button.
2. Pick your scan's setting, then select “Dual-axis Turntable”.
3. Click Ok.



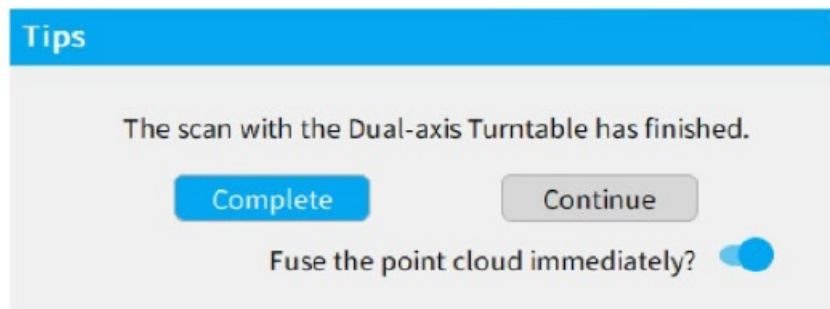
4. Configure your turntable by selecting a rotation speed and X-axis angle for up to 5 rotations. The Z-axis rotation speed can be adjusted from 36 to 60 seconds per rotation. The X-axis angle can be adjusted within a range of $\pm 30^\circ$.



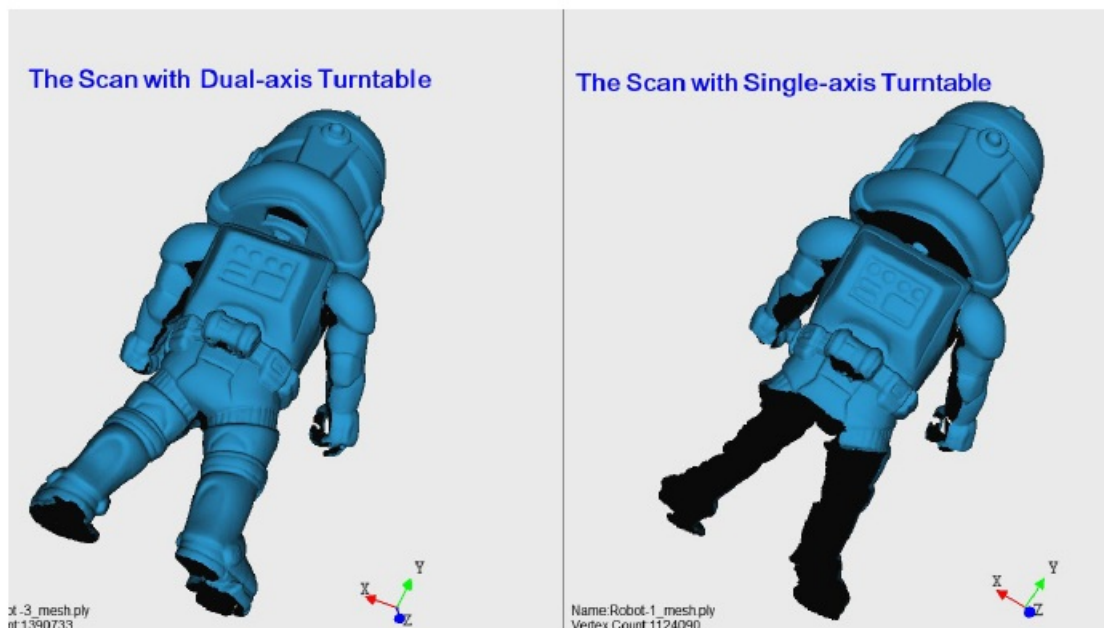
5. Once configured, click "Close."
6. Click the "Start" button to begin the scan. The turntable will start spinning and automatically follow the previously selected settings.

8. Finishing the Scan

The scan will automatically stop once the Dual-axis Turntable has completed all its set rotations. Select “Complete” to finish the scan.

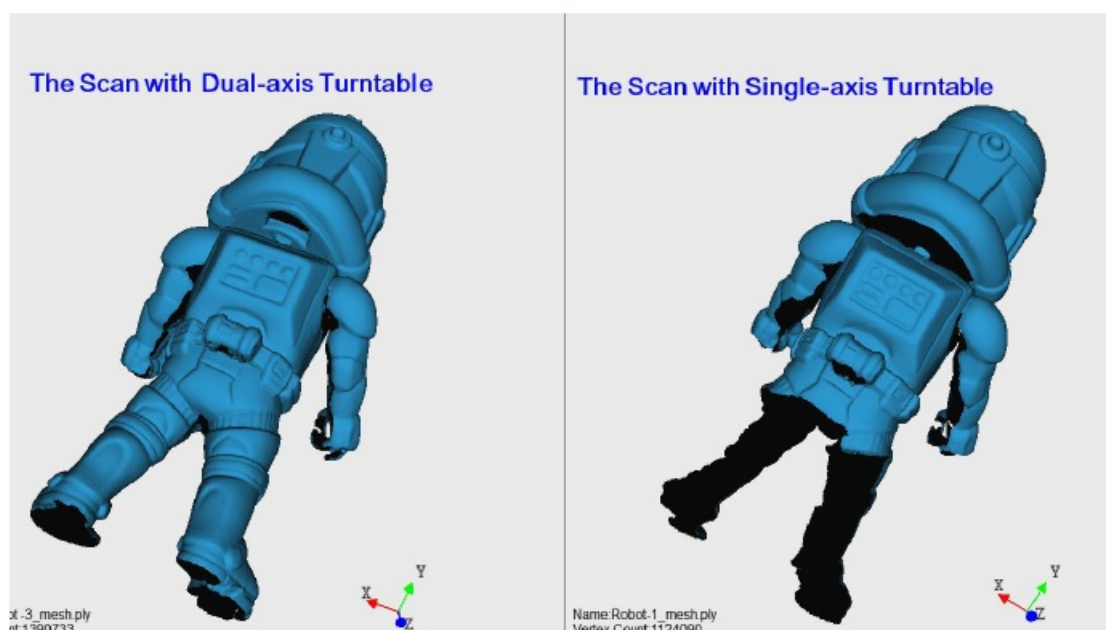


9. Model Comparison




Android Application

APP for controlling the Dual-axis Turntable on your Android has came online at <https://www.revopoint3d.com/download/>



Documents / Resources

<div>Dual-axis Turntable</div> <div>Quick Start Guide</div> <div>1.1.1</div> <div></div>	<div>Revopoint 3D Dual-axis 3D Scanner Turntable [pdf] User Guide</div> <div>Dual-axis, Dual-axis 3D Scanner Turntable, 3D Scanner Turntable, Scanner Turntable, Turntable</div>
---------------------------------------------------------------------------------------------------------------------------------------------------------------------------	--------------------------------------------------------------------------------------------------------------------------------------------------------------------------------------------------

References

- [revopoint3d.com/download-2/](#)
- [best 3d scanning software -revo scan 5](#)