




## REVOLT GC88752-80 Bionic Shark User Manual

[Home](#) » [REVOLT](#) » REVOLT GC88752-80 Bionic Shark User Manual 

*REVOLT GC88752-80 Bionic Shark User Manual*



## User Manual

12+

# BIONIC SHARK



**2.4GHz** Remote control

Frequency bands: 2404MHz-2475MHz

Maximum output power: 1.34dBm

**PLEASE READ THIS INSTRUCTION MANUAL CAREFULLY BEFORE USE.**

The materials, specifications, parts and packaging mentioned in this manual are for reference purposes only. We are not responsible for any changes made to this printed material, nor are we able to inform customers of any updates or changes. Please refer to our website: [R3VOLT.COM](http://R3VOLT.COM) for the latest information.

### Contents

- [1 Important safety information](#)
- [2 About this product](#)
- [3 OPERATING INSTRUCTIONS](#)
- [4 REMOTE CONTROL BATTERY INSTALLATION](#)
- [5 BATTERY INSTALLATION:](#)
- [6 Documents / Resources](#)
- [7 Related Posts](#)

### Important safety information

Thank you for buying this REVOLT item. To ensure that you operate the vehicle comelly, please read these instructions carefully before first use and store them in a safe place for future reference.

**Safety information Not intended for use in salt water.**

- Keep the smaller sized accessories out of the reach of children

- Do not store batteries in a hot environment (e.g. near open flames or a heating device).
- Children must be supervised by an adult when operating the vehicle. The vehicle should always remain within the line of sight of the diver (or instructor).
- Do not recharge non-rechargeable batteries. When installing or changing the batteries, ensure that they are connected in the correct polarity. Do not mix old and new batteries or different types of batteries.
- Do not short circuit the battery terminals.
- If you do not plan to use the vehicle for at least 10 days, discharge the battery to 40%-50% (i.e. if the battery is fully charged, drive the vehicle for half of the total driving time). This helps to prolong the lifespan of the battery.
- You must only use the charging cable provided. Disconnect the charging cable from the vehicle before cleaning. Regularly inspect the charging cable's wires, plug socket, outer casing and other accessories to ensure they are not damaged. If there are any signs of damage, discontinue use immediately until repaired.
- After use, ensure that the vehicle and remote control are switched off and remove the batteries in the remote control.
- The packaging and this manual contain important information and should be kept in a safe place for future reference. Repair and maintenance
- Clean the product regularly with a clean, soft cloth.
- Avoid exposing the product to direct sunlight or heat.
- Do not submerge the remote control in water, as this may damage the electrical components.

## About this product

### Specifications

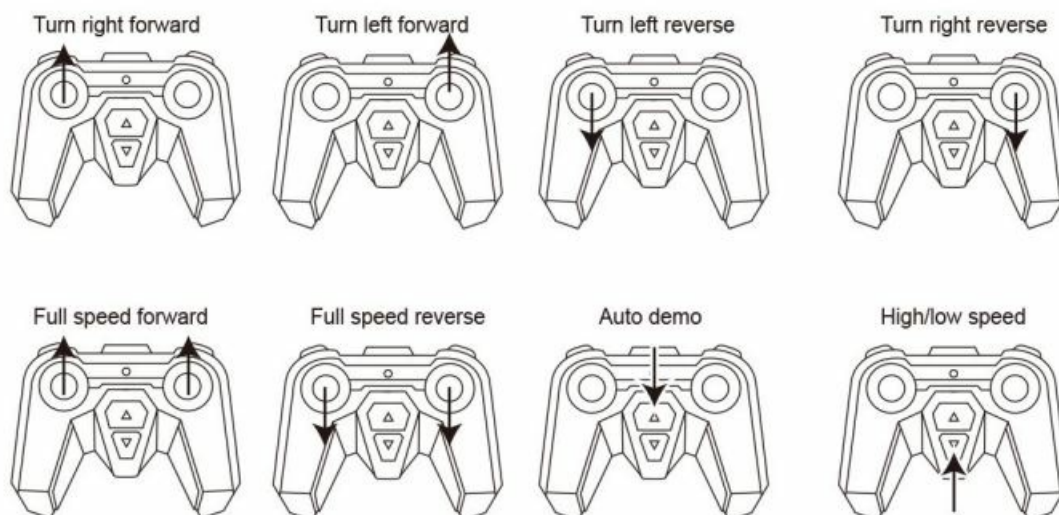
#### Remote controlled shark

Weight	175g
Dimensions	34x14x10cm
Remote control range	20 meters
Charging time	about 45 mins
Operating time	about 10 mins
Battery	3.7V 350mAh rechargeable battery (included)

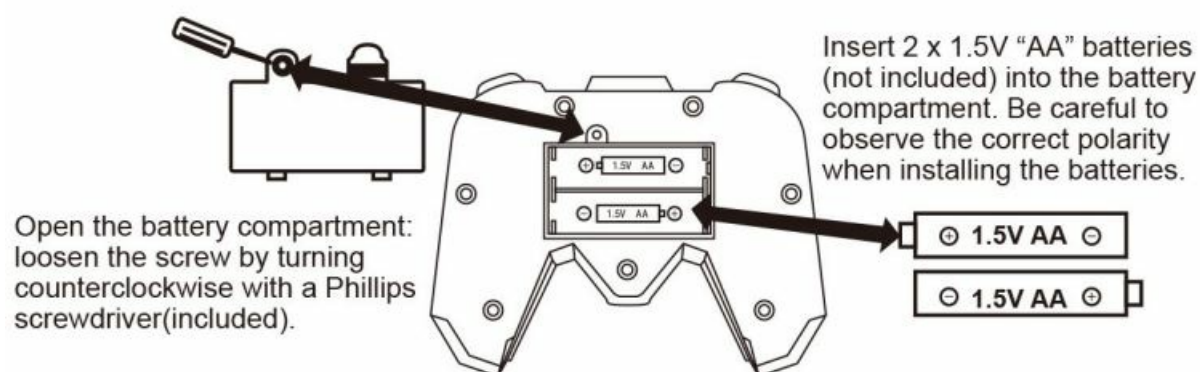
#### Remote control

Operating frequency	2.4 GHz
Battery Requirements	2xAA 1.5V batteries (not included)

## OPERATING INSTRUCTIONS

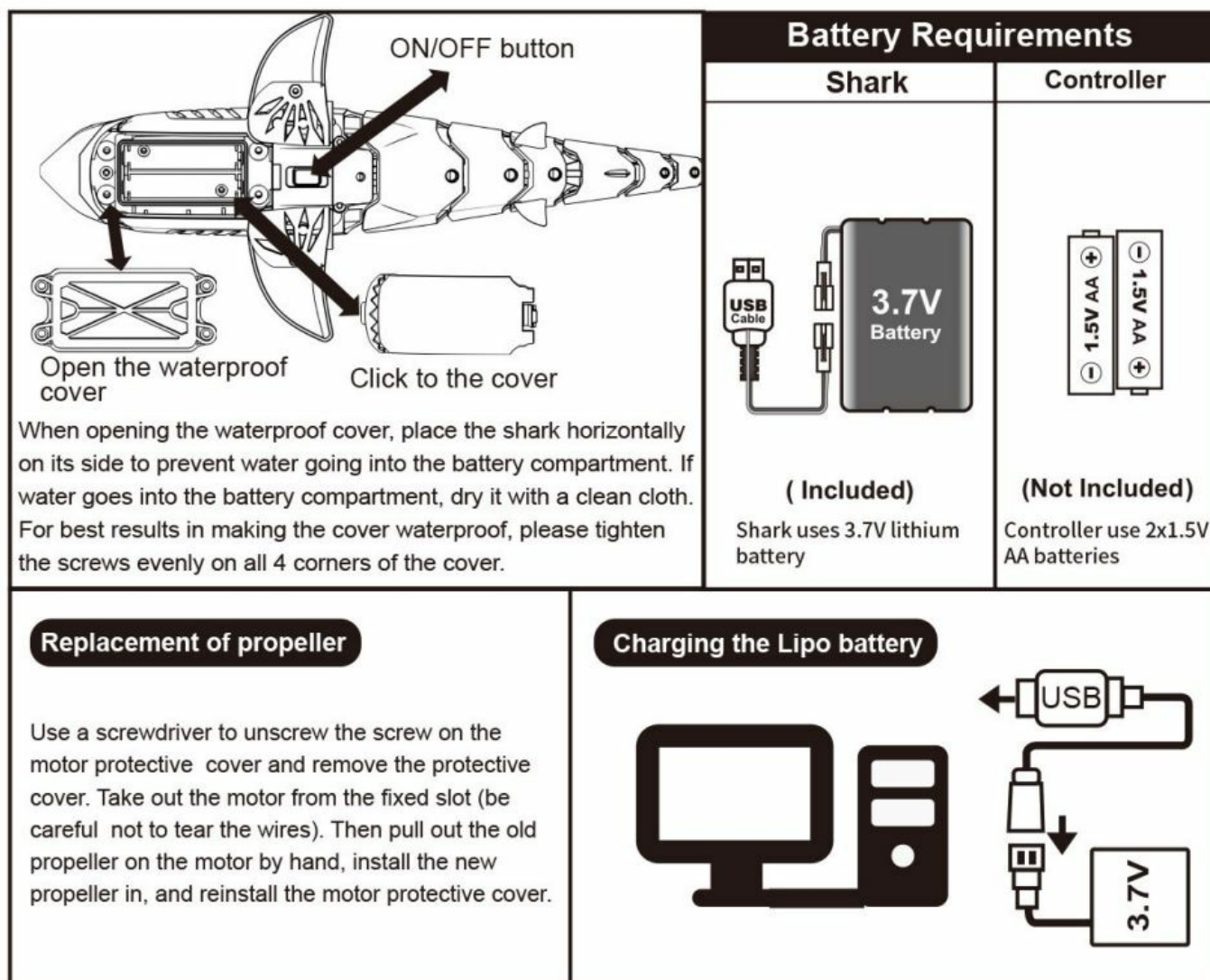


## REMOTE CONTROL BATTERY INSTALLATION



To close the battery compartment: tighten the screw by turning clockwise with a Phillips screwdriver.

## BATTERY INSTALLATION:



### Warning!

\*This product must be assembled and used under the direct supervision of an adult.

\*This product contains small components that present a choking hazard if swallowed; this product is not suitable for children under 12 years of age.

Warning: Changes or modifications to this unit not expressly approved by the party responsible for compliance could void the users authority to operate the equipment.

NOTE: This equipment has been tested and found to comply with the limits for a Class B digital device, pursuant to Part 15 of the FCC Rules These limits are designed to provide reasonable protection against harmful interference in a residential installation. This equipment generates, uses and can radiate radio frequency energy and, if not / installed and used in accordance with the instructions, may cause harmful interference to radio communications.

However, there is no guarantee that interference will not occur in a particular installation. If this equipment does cause harmful interference to radio or television reception, which can be determined by turning the equipment off and on, the user is encouraged to try to correct the interference by one or more of the following measures:

- Reorient or relocate the receiving antenna.
- Increase the separation between the equipment and receiver
- Connect the equipment into an outlet on a circuit different from that to which the receiver is connected.
- Consult the dealer or an experienced radio/TV technician for help.

" This device complies with FCC radiation exposure limits set forth for general population(uncontrolled exposure).This device must not be collocated or operating in conjunction with any other antenna or transmitter."

Decoration of Conformity Inserts :

"Hereby, GUANGDONG SYMA MODEL AIRCRAFT INDUSTRIAL CO., LTD. declares that BIONIC SHARK is in compliance with the essential requirements and other relevant provisions of Directive 2014/53/EU." A copy of the full DoC is attached.

#### FCC Statement:

This device complies with Part 15 of the FCC Rules.

elation is subject to the following two conditions:

- (1) this device may not cause harmful interference, and
  - (2) this device must accept any interference received, including interference that may cause undesired operation.
- chinses or modifications not expressly approved by the party responsible for compliance could void the user s authority to operate the equipment.

This equipment has been tested and found to comply with the limits for a Class B clinical device, pursuant to Part 15 of the FCC Rules. These limits are designed to provide reasonable protection against harmful interference in a residential installation. This equipment generates, uses and can radiate radio frequency energy and, if not installed and used in accordance with the instructions, may cause harmful interference to radio communications. However, there is no guarantee that interference will not occur in a particular installation. If this equipment does cause harmful interference to radio or television reception, which can be determined by turning the equipment off and on, the user is encouraged to try to correct the interference by one or more of the following measures:

- Reorient or relocate the receiving antenna.
- Increase the separation between the equipment and receiver.
- Connect the equipment into an outlet on a circuit different from that to which the receiver is connected.
- Consult the dealer or an experienced radio/TV technician for help.

This equipment complies with FCC radiation exposure limits set forth for an uncontrolled environment. This transmitter must not be co-located or operating in conjunction with any other antenna or transmitter.

#### GUANGDONG SYMA MODEL AIRCRAFT INDUSTRIAL CO., LTD.

Address: N0.2 WEST XINGYE ROAD LAIMEI INDUSTRIAL AREA CHENG HAI SHANTOU GUANGDONG  
CHINA

Sales hotline: 0754-86980668, After-sales hotline: 0754-86395095

Fax: 0754-86395098 Zip code: 515800

The manufacturer the right to t he final interpretant ion of this instruction manual.

#### Documents / Resources

	<a href="#">REVOLT GC88752-80 Bionic Shark</a> [pdf] User Manual GC88752-80, GC8875280, QV7-GC88752-80, QV7GC8875280, GC88752-80 Bionic Shark, G C88752-80, Bionic Shark, Shark
---	---