



Revolo WFV01 Smart Locks with Camera User Guide

[Home](#) » [Revolo](#) » Revolo WFV01 Smart Locks with Camera User Guide 

Contents

- [1 Revolo WFV01 Smart Locks with Camera](#)
- [2 Product Information](#)
- [3 Product Usage Instruction](#)
- [4 Installation Guide](#)
- [5 DOWNLOAD REVOLO APP](#)
- [6 PROCESS GUIDE](#)
- [7 WHAT'S INCLUDED](#)
- [8 PRODUCT OVERVIEW](#)
- [9 PREPARE DOOR FOR INSTALLATION](#)
- [10 INSTALLATION GUIDE](#)
- [11 FCC STATEMENT](#)
- [12 Documents / Resources](#)
 - [12.1 References](#)
- [13 Related Posts](#)



Revolo WFV01 Smart Locks with Camera



Product Information

Specifications

- **Product Name:** WiFi Smart Video Lock
- **Compatibility:** Works with the Revolo APP
- **App Store:** Download the Revolo APP from the APP store
- **Google Play:** Download the Revolo APP from Google Play
- **Contact:** support@irevolo.com

Product Overview

The WiFi Smart Video Lock is a revolutionary smart lock that allows you to control and monitor your door remotely using the Revolo APP. It features a touchscreen interface, rubber gasket for waterproofing, cylinder cover, and a Type-C port for charging. The lock is powered by a rechargeable battery and also includes a battery cover with a reset button, privacy button, and thumb turn for manual operation.

Product Usage Instruction

Prepare Door for Installation

1. Check the door status and ensure that the doorframe is aligned with the door.
2. Make sure there are no obstructions stuck in the doorframe.
3. Leave enough space for the deadbolt to extend into the doorframe when the door is locked.
4. Verify the backset and door hole dimensions according to the provided specifications.
5. Check the door thickness and ensure it falls within the recommended range.

Installation Guide

Step 1: Installing the Latch and Strike

1. Ensure that the bolt is in the retracted (unlocked) position before changing the backset.
2. Insert the deadbolt into the doorframe with the "UP" word facing up.
3. Screw the deadbolt into the doorframe using a screwdriver.
4. If the doorframe is chiseled, ensure there is a space between the faceplate and the side wall of the slot to avoid sticking.
5. If the doorframe is not chiseled, use a wood block and hammer to install the latch in the door.
6. Remove the rectangular face from the latch using a flathead screwdriver and install the driver-in collar.
7. Install the strike on the door frame, ensuring that the hole is drilled at least 1 inch (25mm) deep.

Step 2: Installing Exterior Assembly

1. Ensure that the latch is fully retracted (in the unlocked position) before installation.
2. Measure your cross bore dimension and follow the appropriate installation steps.
3. Make sure the rubber gasket is on the exterior assembly before installation to ensure waterproofing.
4. Route the cable connected to the exterior assembly under the deadbolt and align the tailpiece with the center hole of the deadbolt.
5. Insert the tailpiece into the center hole.

Step 3: Installing the Mounting Plate

1. Send the cable and RF cable through the bottom slot in the mounting plate.
2. Secure the mounting plate with the supplied screws, ensuring it stays parallel to the door edge.

FAQ

- **Q: Where can I download the Revolo APP?**

A: You can download the Revolo APP from the APP store or Google Play.

- **Q: How do I enter pairing mode for the accessory?**

A: Hold on the button of the accessory for 5 seconds to enter pairing mode.

- **Q: How do I add an accessory in the settings?**

A: Go to the device settings, select "Accessory," and follow the instructions to add an accessory.

DOWNLOAD REVOLO APP

Download the Revolo APP from the APP store or Google Play.



Scan the QR code to download the Revolo APP

If you have any questions, please contact support@irevolo.com.



PROCESS GUIDE

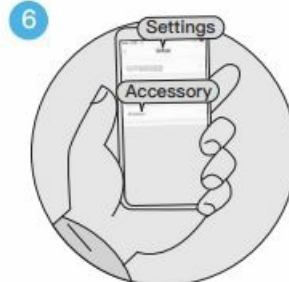
1. Download the Revolo app to setup.
2. Follow the instructions and replace your existing lock.



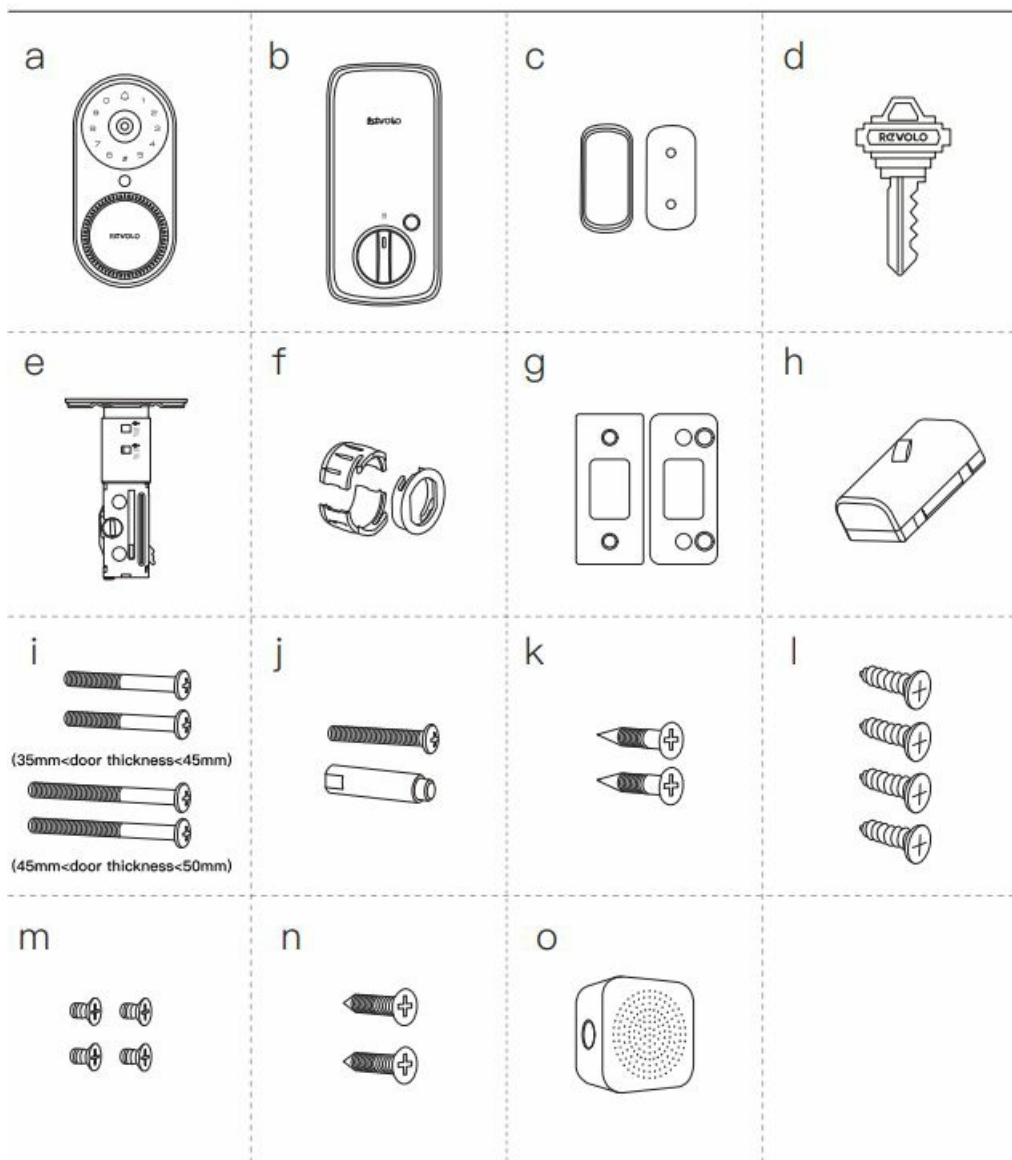
3. Scan the QR code on you device.
4. Calibrate your lock and you are done.



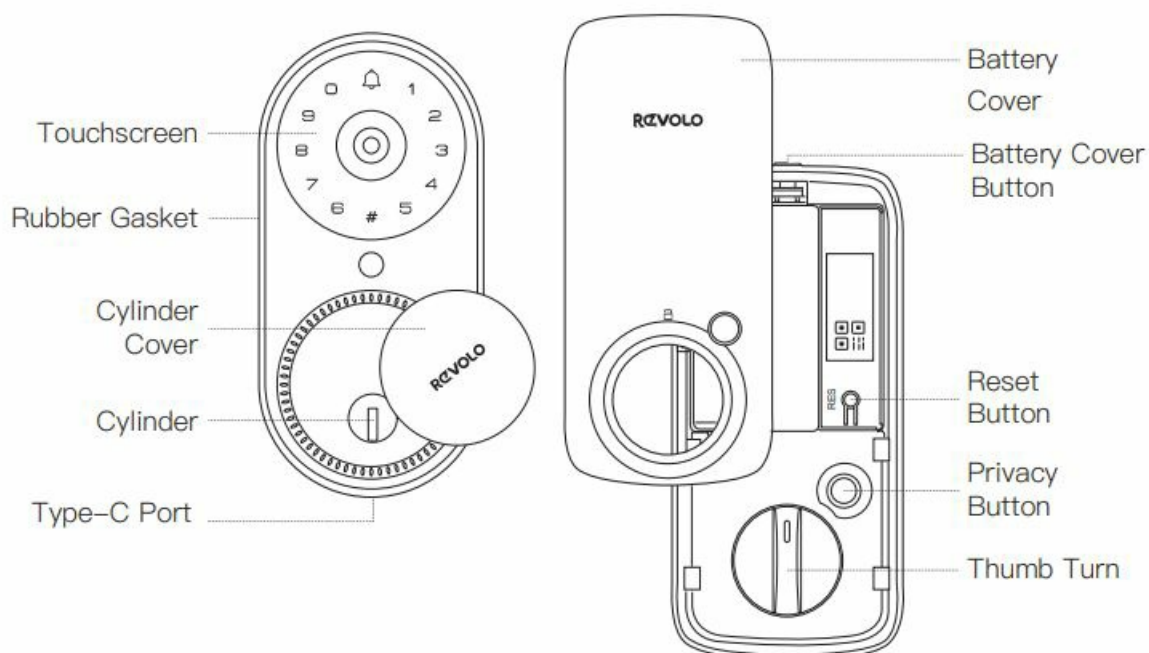
5. hold on the button of accessory for 5s to enter pairing mode (Optional).
6. Go to the device to an add accessory, "Settings"->"Accessory"(Optional).



WHAT'S INCLUDED

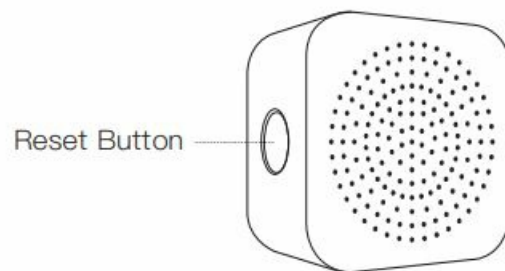


PRODUCT OVERVIEW



DEFINATION

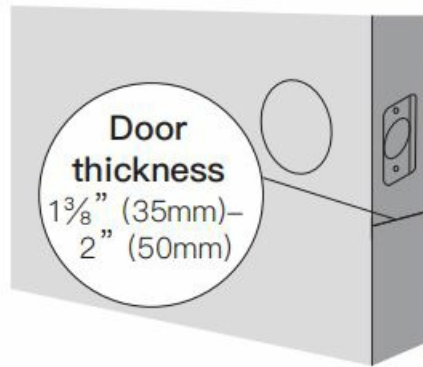
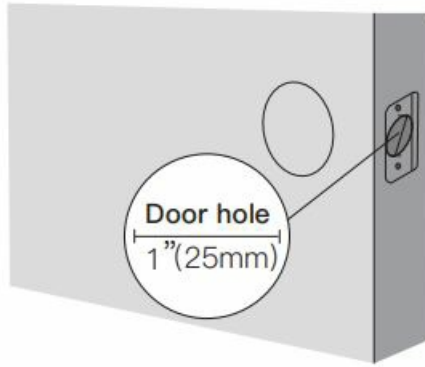
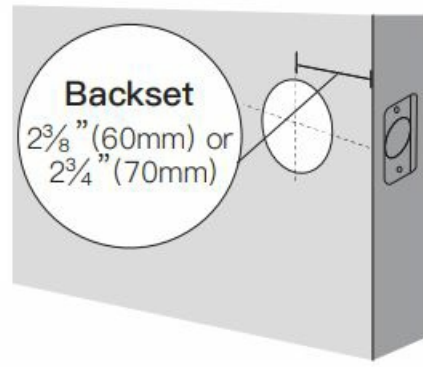
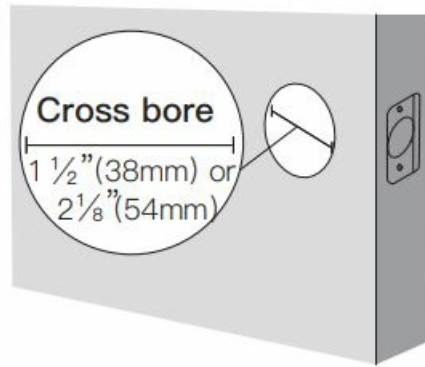
- **Lock-Out:** If you fail to unlock the door for 5 consecutive times using the PIN Key, your Lock will be shut-down for 3 Mins.
- **Privacy Button:** Push and HOLD the Privacy button on inside panel for 3 Seconds to active Privacy Mode. This will disable all user PIN code access and APP control. Privacy Mode will be disable automatically after unlock the device with the Thumb Turn or Mechanical Key.
- **Reset Button:** Push and HOLD the Reset Button for 5 seconds to reset your device. After reset operation, the lock will be restored to factory default settings, all user credentials will be deleted.
- **Battery Indicator:** The Red LED will flash 3 times slowly if the battery level is lower than 20%. Please replace the batteries as soon an possible.
- **Type-C Port:** Insert a Type-C cable into the Type-C port and use a portable battery(5V 2A) to power the Smart Lock. If your device's batteries are completely ran out.



- Click the Rest Button
Loop to change the volume level.
- Duoble Click the Rest Button Loop to change the local melody.
- Hold the Rest Button
Hold the rest button for 5 seconds to change to pairing mode.

PREPARE DOOR FOR INSTALLATION

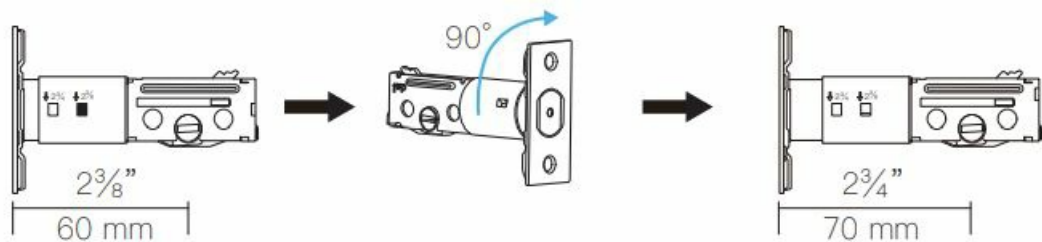
1. Make sure that the following criteria are met so that the Smart Lock can be installed properly:
 1. Check the door status. Make sure the doorframe is aligned with the door.
 2. There are no obstructions stuck in the doorframe.
 3. Leave enough space for the deadbolt to extend into the doorframe when the door is locked.
2. Check your door / frame dimensions to make sure that they fit the following measurements:
 1. The cross bore diameter $2\frac{1}{8}$ " (54 mm) or $1\frac{1}{2}$ " (38 mm)
 2. Backset $2\frac{3}{8}$ " (60 mm) or $2\frac{3}{4}$ " (70 mm)
 3. Diameter of the door hole 1" (25 mm)
 4. Door thickness $1\frac{3}{8}$ " (35 mm) – 2" (50 mm)



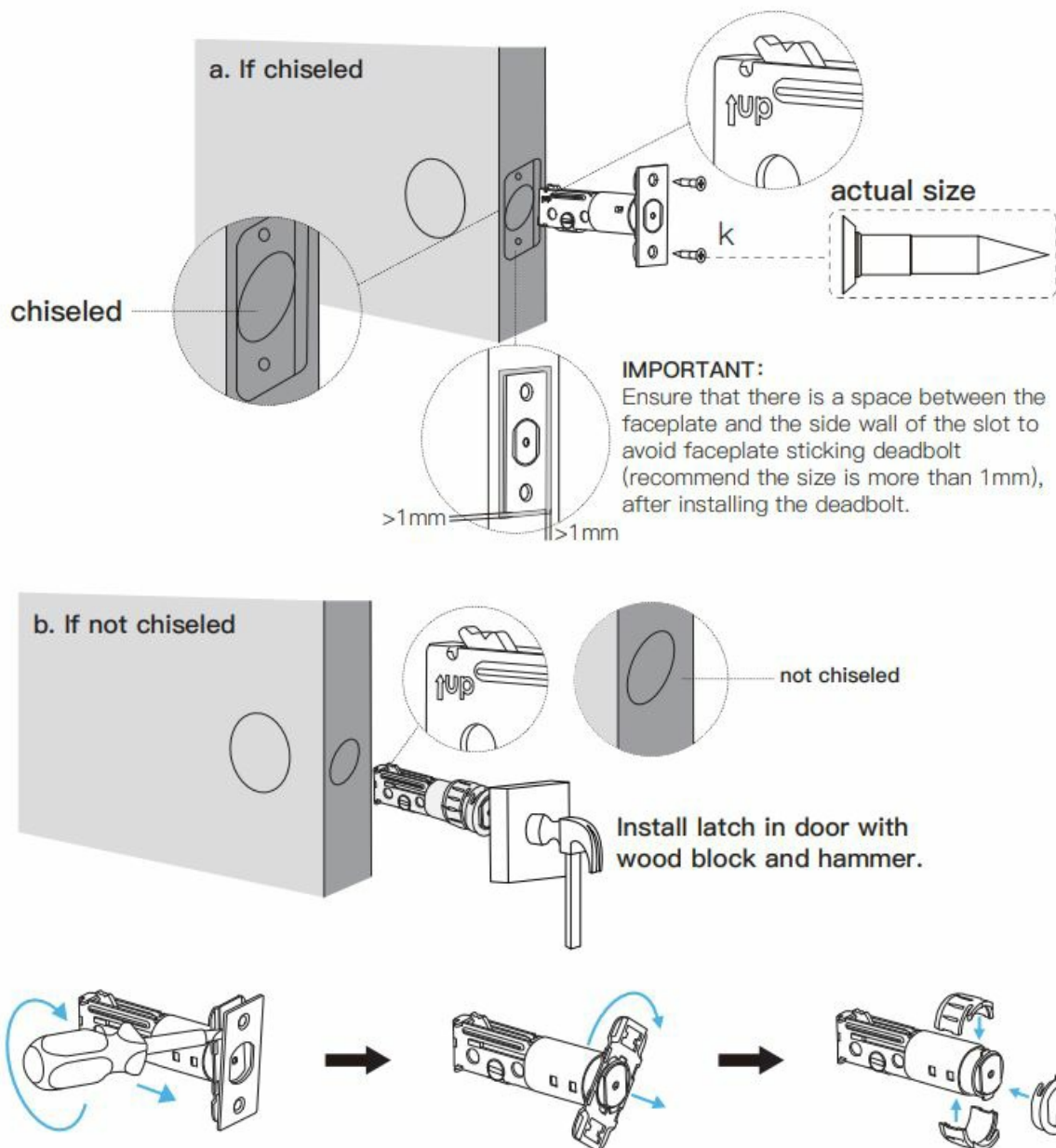
INSTALLATION GUIDE

STEP 1 INSTALLING THE LATCH AND STRIKE

- To install the deadbolt:
 - Measure your door's backset dimension: whether it is 2 $\frac{3}{4}$ " (70 mm) or 2 $\frac{3}{8}$ " (60 mm).
 - If your door's backset dimension is 2 $\frac{3}{8}$ " (60 mm), use the provided deadbolt to install. If your door's backset is 2 $\frac{3}{4}$ " (70 mm). Rotate and pull the latch as shown the extended latch.
The bolt must be in retracted(Unlocked) position when you are changing backset.



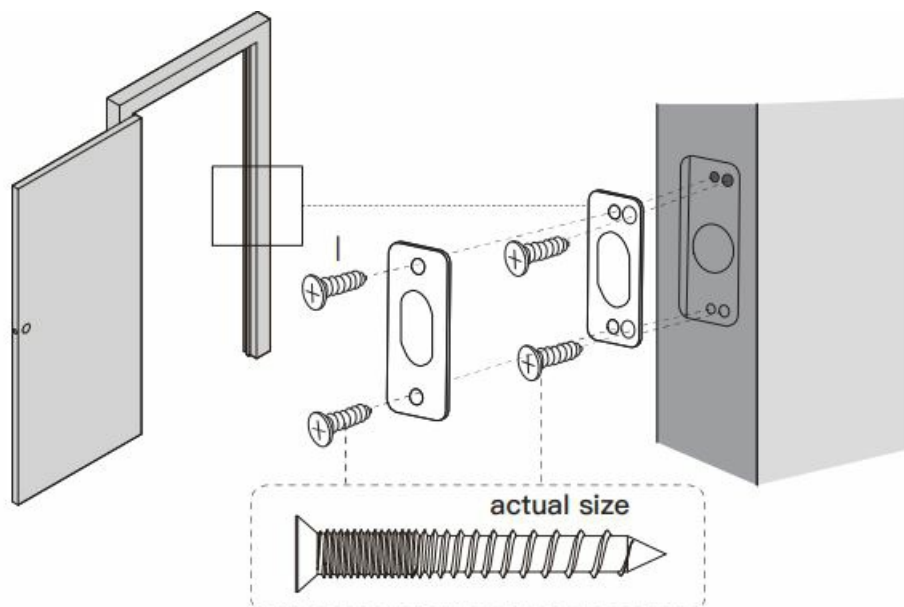
- Insert the deadbolt into the doorframe and make sure the word "UP" faces up as indicated on the deadbolt.
- Screw into the doorframe with a screwdriver (not provided).



Use a flathead screwdriver to remove rectangular face from latch and install driver-in collar.

5. Install strike on the door frame.

IMPORTANT: Make sure hole in door frame is drilled a minimum of 1" (25mm) deep.



STEP 2 INSTALLING EXTERIOR ASSEMBLY

IMPORTANT: Before installation, make sure the latch is fully retracted (in the unlocked position).

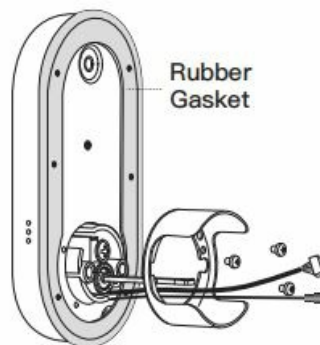


To install the exterior assembly:

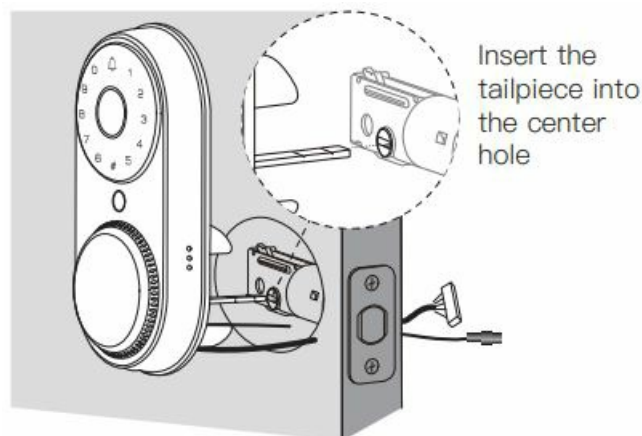
1. Measure your cross bore dimension and determine the installation steps accordingly.

- If the diameter of your cross bore is 2 $\frac{1}{8}$ "(54mm), install directly.
- If you have a 1 $\frac{1}{2}$ "(38mm) crossbore, remove the spacer.

IMPORTANT: Make sure the rubber gasket is on the exterior assembly before installation, otherwise the exterior assembly will not be waterproof.

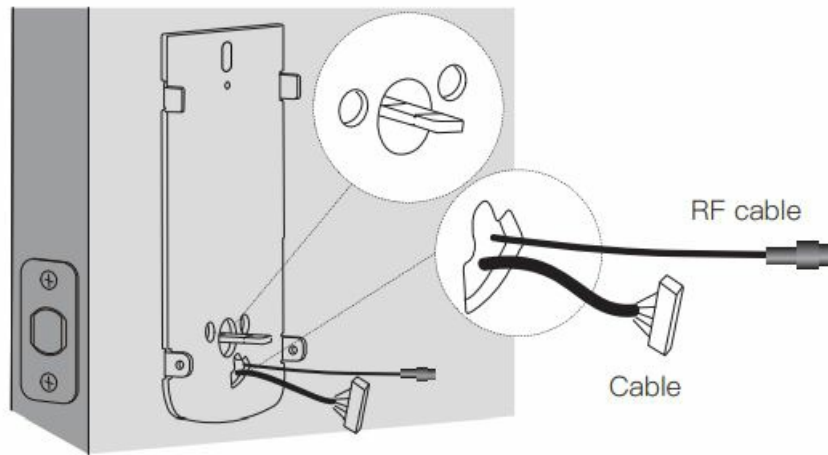


2. Route the cable connected on the exterior assembly under the deadbolt. Align the tailpiece with center hole of the deadbolt, and insert it into the center hole.

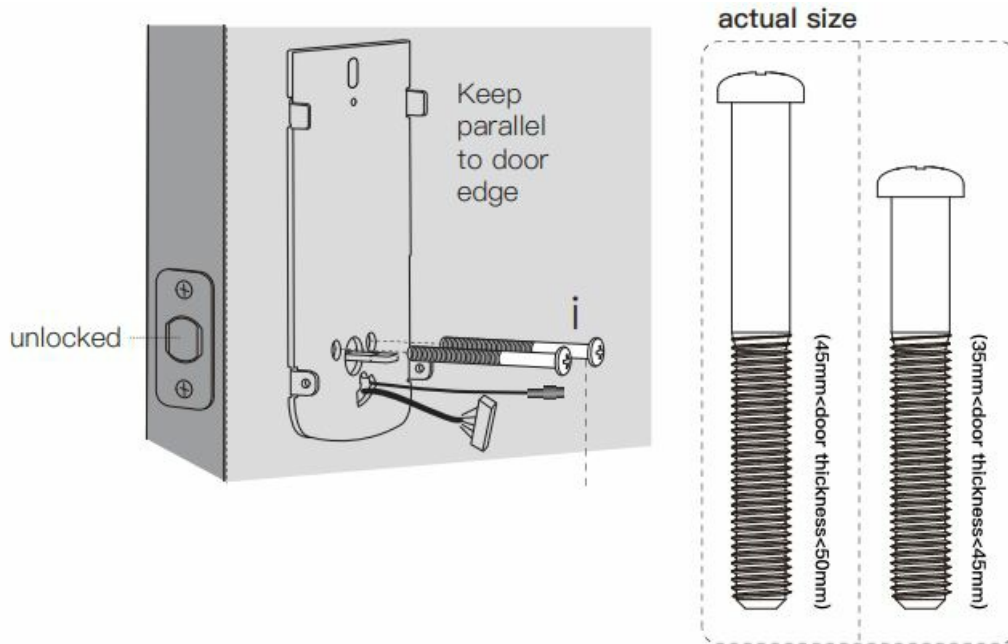


STEP 3 INSTALLING THE MOUNTING PLATE

1. Send the cable and the RF cable through the bottom slot in the mounting plate.

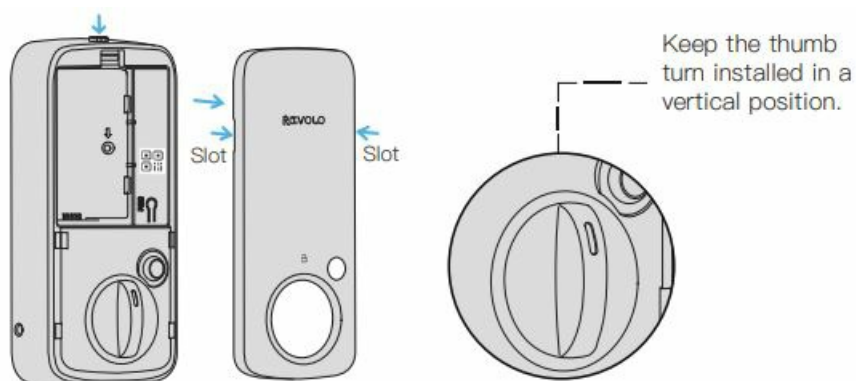


2. Secure the mounting plate with the supplied screws.



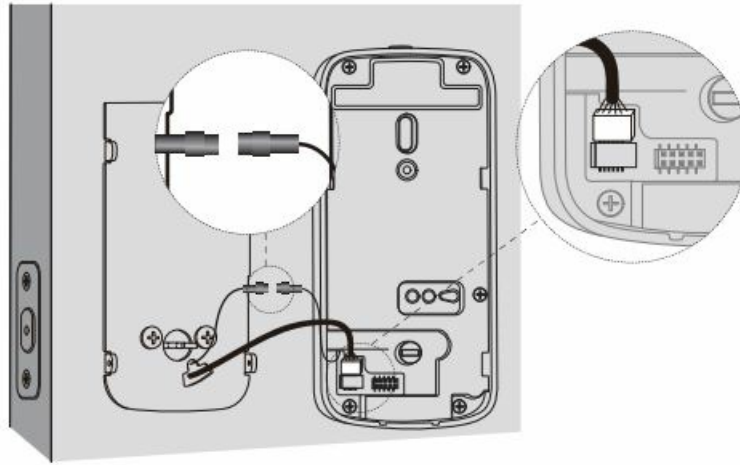
STEP 4 INSTALLING INTERIOR ASSEMBLY

1. Press the battery cover button and remove from the slotted position.

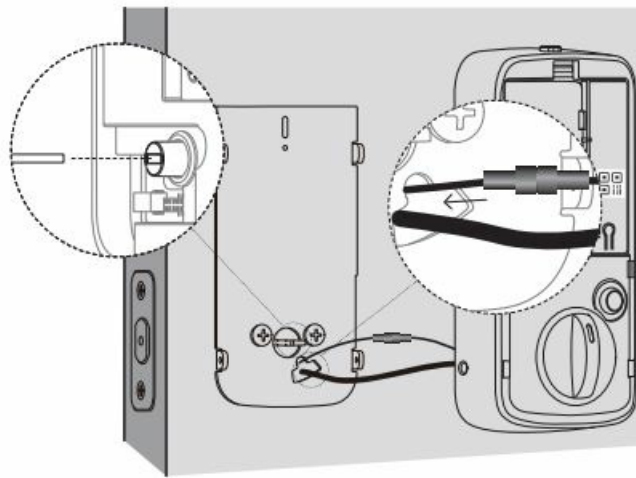


2. Connect the cable and RF cable to the corresponding port.

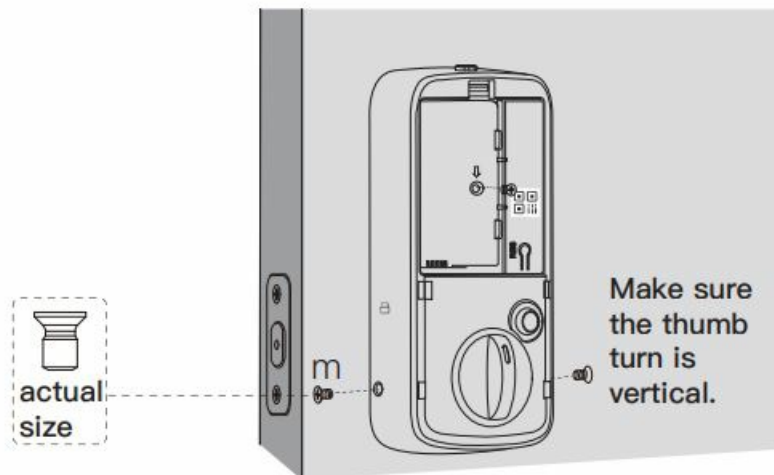
Note: Connect the cable first.



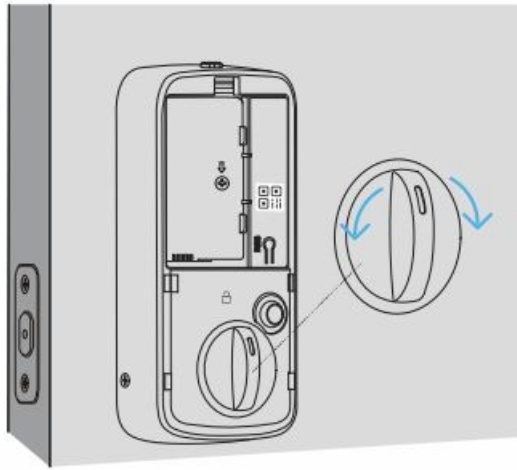
3. Rotate the thumb turn in vertical position, then push the cable and RF cable back to the hole of mounting plate and install the interior assembly.



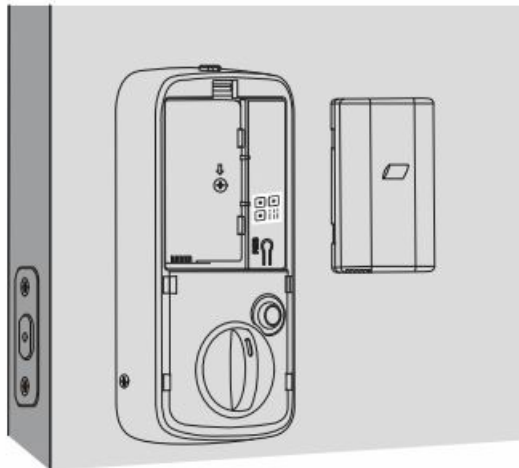
4. To avoid sticking the cable and the RF cable, secure the interior assembly with supplied screws.



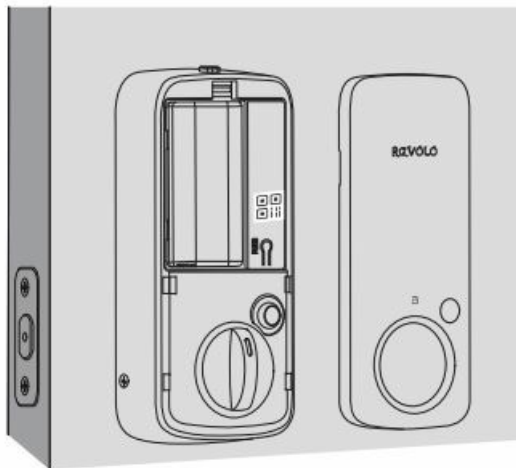
5. Test the thumb turn manually for smooth rotation. If thumb turn doesn't rotate, make sure the thumb turn in vertical position.



6. Insert the Li-battery into the battery case matching the battery connector.



7. Scan the QR code to pair your device with your phone. Close battery cover.



STEP 5 PAIR AND SET UP YOUR SMART LOCK VIA APP

Note: The lock will not lock automatically before the setting is completed. To avoid being locked outside, pair your phone with the Smart Lock and set an access code unlocking the door.

To pair your phone with Smart Lock.

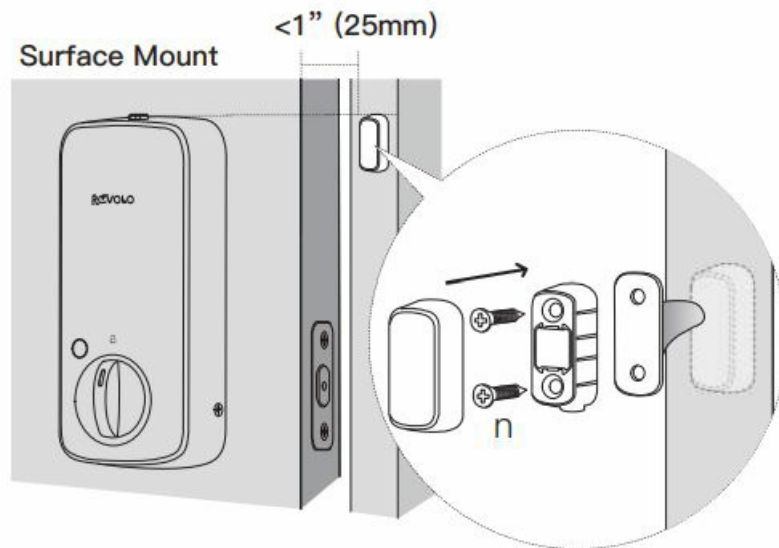
1. Scan the QR code on the back of the Smart Lock to get the information of the Smart Lock. Follow the on-screen instructions to complete the setup.

Note:

- The first user that is paired is the only administrator, and can authorize other users to use the lock.
- Reset the device locally by press and HOLD the reset button for 5 seconds will not unpair the device from the administrator's APP.
- The administrator will not be able to setup and operate the device with Revolo App anymore after reset locally. Moreover the administrator has to unbind the Lock via Revolo App, so that the Lock can be paired or binded by other users.

STEP 6 INSTALLING DOOR SENSOR

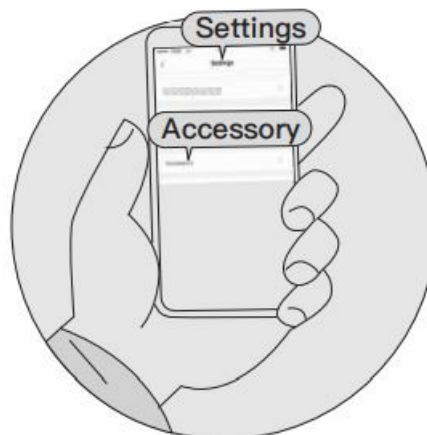
For optimal performance, Door Sensor should be mounted within 1" from the edge of your door, and within 1" from the top of the interior assembly.



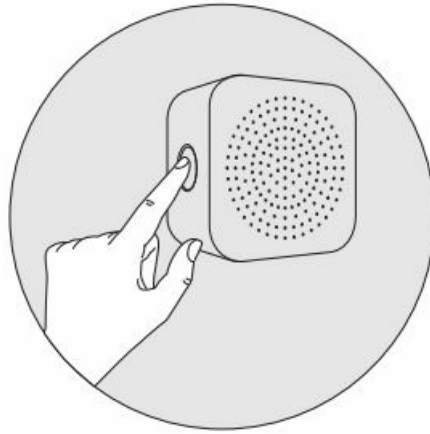
1. Determine mounting location.
2. Stick the mounting tape to the door sensor.
3. Stick it on door frame.
4. Calibrate your Lock.

STEP 7 ADD ACCESSORY (Optional)

1. Go to the device to an add accessory, "Settings"->"Accessory"->"Add Accessories" or "+".



2. Hold the button of the accessory for 5s to enter pairing mode.



3. Follow instructions from App and accessory prompts, then complete the process.

Tip: If you encounter any problems during the use of the product, please contact support@irevolo.com.

FCC STATEMENT

This equipment has been tested and found to comply with the limits for a Class B digital device, pursuant to part 15 of the FCC Rules. These limits are designed to provide reasonable protection against harmful interference in a residential installation. This equipment generates, uses and can radiate radio frequency energy and, if not installed and used in accordance with the instructions, may cause harmful interference to radio communications. However, there is no guarantee that interference will not occur in a particular installation. If this equipment does cause harmful interference to radio or television reception, which can be determined by turning the equipment off and on, the user is encouraged to try to correct the interference by one or more of the following measures:

- Reorient or relocate the receiving antenna.
- Increase the separation between the equipment and receiver.
- Connect the equipment into an outlet on a circuit different from that to which the receiver is connected.
- Consult the dealer or an experienced radio/TV technician for help.

FCC Radiation Exposure Statement

This device complies with FCC radiation exposure limits set forth for an uncontrolled environment. This equipment must be installed and operated in accordance with provided instructions and the antenna(s) used for this transmitter must be installed to provide a separation distance of at least 20 cm from all persons. This device complies with Part 15 of the FCC Rules. Operation is subject to the following two conditions:

1. this device may not cause harmful interference, and
2. this device must accept any interference received, including interference that may cause undesired operation.

Caution!

Any changes or modifications not expressly approved by the party responsible for compliance could void the user's authority to operate the equipment.

CANADA STATEMENT

This device contains licence-exempt transmitter(s)/receiver(s) that comply with Innovation, Science and Economic Development Canada's licence-exempt RSS(s). Operation is subject to the following two conditions:

1. This device may not cause interference.
2. This device must accept any interference, including interference that may cause undesired operation of the device.


The device meets the exemption from the routine evaluation limits in section 2.5 of RSS 102 and compliance with RSS-102 RF exposure, users can obtain Canadian information on RF exposure and compliance. This transmitter must not be co-located or operating in conjunction with any other antenna or transmitter. This equipment should be installed and operated with a minimum distance of 20 centimeters between the radiator and your body.

WARNINGS

Failure to follow the below instructions could result in damage to the product and void the factory warranty. The accuracy of the door preparation is critical to allow proper functioning and security of this Revolo Product. Misalignment of the door prep and lock can cause performance degradation and hinder the security functions of the lock.

Finish Care: This lockset is designed to provide the highest standard of product quality and performance. Care should be taken to ensure a long-lasting finish. When cleaning is required use a soft, damp cloth. Using lacquer thinner, caustic soaps, abrasive cleaners or polishes could damage the coating and result in tarnishing.

Documents / Resources

	<p>Revolo WFV01 Smart Locks with Camera [pdf] User Guide WFV01, WFV01 Smart Locks with Camera, Smart Locks with Camera, Locks with Camera, Camera</p>
--	---

References

- [User Manual](#)