



REVAMP CL-2500 Liberate Cordless Hollywood Curl User Guide

[Home](#) » [REVAMP](#) » REVAMP CL-2500 Liberate Cordless Hollywood Curl User Guide 

Contents

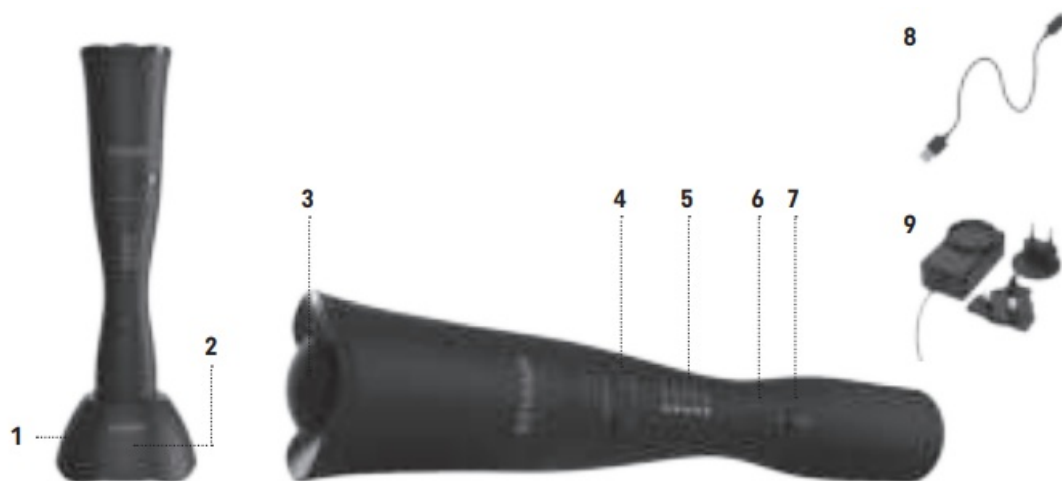
- [1 REVAMP CL-2500 Liberate Cordless Hollywood Curl](#)
- [2 FEATURES](#)
- [3 LIBERATE CORDLESS HOLLYWOOD CURL](#)
- [4 PROGLOSS™ SUPER SMOOTH OILS](#)
- [5 BEFORE USING](#)
- [6 INSTRUCTIONS FOR USE](#)
- [7 CREATING PERFECT HOLLYWOOD CURLS](#)
- [8 BATTERY STATUS INDICATOR](#)
- [9 AUTO SHUT-OFF](#)
- [10 CLEANING & MAINTENANCE](#)
- [11 IMPORTANT SAFEGUARDS](#)
- [12 IMPORTANT SAFEGUARDS – BATTERY](#)
- [13 TWO YEAR GUARANTEE](#)
- [14 WEEE explanation](#)
- [15 Documents / Resources](#)
 - [15.1 References](#)
- [16 Related Posts](#)



REVAMP CL-2500 Liberate Cordless Hollywood Curl



FEATURES



1. Product stand
2. Digital battery display
3. Barrel
4. Curling button (with audible beep) / right or left direction
5. Temperature indicator LED
6. Temperature setting button

7. On/off power button
8. USB-C to USB-A charging cable (30cm cord)
9. EU/UK adaptor (2m cord)

LIBERATE CORDLESS HOLLYWOOD CURL

Create beautiful dramatic curls the fast and easy way. Revamp LIBERATE CORDLESS HOLLYWOOD CURL's temperature-controlled rotating barrel carefully wraps the hair for you, producing effortless even curls every time. The LIBERATE CORDLESS HOLLYWOOD CURL rotating auto curler has been specifically designed to give you freedom of movement whenever, wherever you use it without compromising on performance.

Get up to 40 minutes of styling time (for a typical user) with the powerful triple cell lithium ion battery. The ultra-thin thermal film technology gives you exceptional gloss and shine and the super smooth ceramic barrel will make your hair extra smooth with no flyaway for a true salon worthy result, whether you use your new Liberate Hollywood curl for curling or waving your hair.

PROGLOSS™ SUPER SMOOTH OILS

Every product in the Revamp haircare range is infused with PROGLOSS™ SUPER SMOOTH OILS – enriched with Argan, Keratin and Coconut for ultimate smoothness and shine.

BEFORE USING

CHARGING YOUR LIBERATE CORDLESS HOLLYWOOD CURL

Before using your LIBERATE CORDLESS HOLLYWOOD CURL rotating auto curler for the first time, please fully charge the device using the adaptor (9) or the USB charging cable (8) provided in the box with the autocurler. The charging time will be around 4 hours, if charged using the EU/UK adaptor, for approximately 40 minutes use (for a typical user) according to the temperature setting selected. The charging time will be around 4 hours and 30 minutes if using the charging stand.

Please follow the instructions illustrated below to use the adaptor:



Whilst charging, the blue LED light of your autocurler, indicating the battery of the device, will be flashing steadily. Once the blue LED light goes off, that means your autocurler is fully charged and is ready for use.

Please note:

Your autocurler comes with a charging stand as well as a UK/EU charging adaptor and a separate USB charging cable. You can charge your LIBERATE CORDLESS HOLLYWOOD CURL:

- using the UK/EU charging adaptor with the USB-C end plugged into the autocurler.
- using the UK/EU charging adaptor with the USB-C end plugged into the charging stand. In this case, the blue LED light on the charging stand will remain static whilst the blue LED light on the autocurler will flash until fully charged. Once fully charged, the blue LED light on the autocurler will stay on for approximately 10 minutes and then goes off.
- using the USB charging cable plugged into any USB compatible device with the USB-C end plugged into the

autocurler.

- using the USB charging cable plugged into any USB compatible device with the USB-C end plugged into the charging stand. In this case, the blue LED light on the charging stand will remain static whilst the blue LED light on the autocurler will flash until fully charged. Once fully charged, the blue LED light on the autocurler will stay on for approximately 10 minutes and then goes off.

While styling your hair you can return your autocurler to the charging stand but please note that the autocurler will only recharge when it has been turned off.

Warning: If the blue LED light of your autocurler, indicating the battery of the device, suddenly starts to flash very rapidly then the appliance is faulty. If this happens, please stop charging and remove the adaptor from the mains and contact our Customer Care Centre for further advice.

INSTRUCTIONS FOR USE

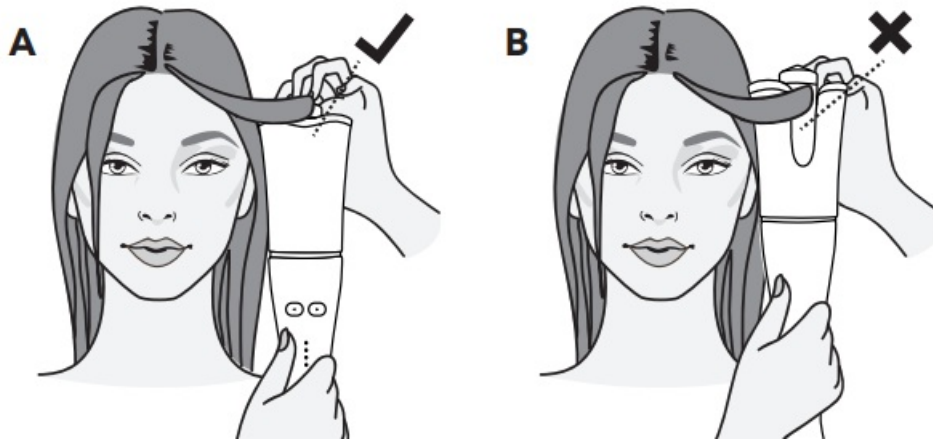
- Before use, ensure the hair is clean, dry and tangle-free.
- For extra protection, apply a heat protection spray.
- Section the hair prior to styling. Style the lower layers first.
- Plug the product into a 100-240V mains power supply.
- Slide the POWER button to the “on” position then press and hold the temperature button for 2 seconds to switch on the product. The default temperature when the product switches on is 180°C. There are 4 temperature settings 140°C, 160°C, 180°C, and 200°C, indicated by a white LED light according to the temperature selected.
- Press the temperature button again to select your desired temperature. The white LED light indicating the temperature setting selected will gradually move up as you press the temperature button.
- REVAMP recommends starting on the lowest setting on initial use and increase the temperature until the desired result is achieved.

SETTING	CURL TYPE (for normal hair)	TEMPERATURE
Low	Very loose curls	140°C
Medium Low	Loose curls	160°C
Medium	Regular curls	180°C
High	Tighter curls	200°C

Note: type of curls recommended on normal hair

The selected digital temperature display will flash until the autocurler has reached the desired temperature. Once the temperature has been reached, the white LED light will remain static and the audible beep means the product is ready to style. See table above**

CREATING PERFECT HOLLYWOOD CURLS

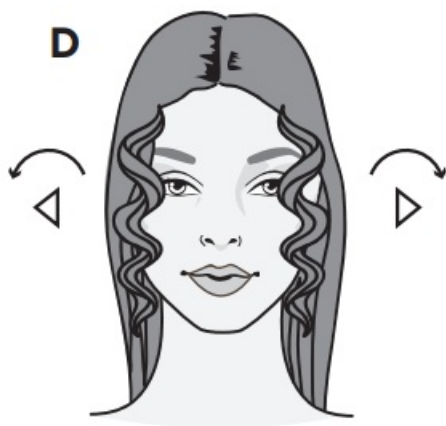


- Separate each layer of hair into sections of 3 cm wide. Smooth each section of hair by brushing or combing through the section (from scalp to hair ends) prior to curling.
- **VERY IMPORTANT** – When curling your own hair, be sure to hold the device with the buttons facing towards you, see (A). If curling a friend's hair for them, have the buttons facing towards their face. Always make sure that the control buttons with the REVAMP logo located on the front of the product are facing you or your friend's face.
- Thread the top of the hair through the small recess at the front of the product, then down through the deeper aperture at the back of the product as shown in (C). Hold the appliance around 50-75mm away from your head.
(A)



- Choose the direction of the curl by pressing the right or left curling button (feature 2) as shown in diagram D. Work on one side of the head at a time. When you move on to the other side, press the opposite direction curling button so that your curls are symmetrical (D).
- **VERY IMPORTANT** – Please do not put your fingers in the deeper aperture at the back of the product or try to touch the hot barrel.
- Thread the top of the hair through the small recess at the front of the product and down through the deep aperture at the back, then press and hold the curling button. The hair will be automatically wrapped around the heated barrel.
- Keep holding the button while the hair is wrapped around the barrel and until you hear the beep.
- The curling system stops and a beep is heard after 15 seconds which is sufficient time to curl normal hair.
- After hearing the beep, release the curl button. The rotating clip will have stopped and you can lower the appliance from the hair to release your curl.
- **Caution!** When the curling mechanism has stopped, always pull the product downwards to release the curl.
- Repeat for each hair section, allowing each curl time to cool in between.

- After use, switch off the appliance, unplug and allow to cool before storing away.
- THE PRODUCT MAY JAM IF TOO MUCH HAIR IS FED AROUND THE BARREL. In this case, the product will automatically shut off. Simply pull product down to release the hair and turn back on again to continue using.



Follow us on www.revamphair.com for the latest hair tips and advice.

Please note:

- When the product runs out of charge, it will turn itself off with an audible “beep” signal.
- Avoid over-use of styling products as this may deteriorate the coating on the barrel.
- The heated barrel and top end of the appliance get very hot during use. To avoid burns, keep the barrel away from direct contact with the head and only hold the appliance by the handle.
- While heating, during use and cooling, place on the REVAMP stand or on a heat resistant surface. Only hold the product by the cool handle.
- Do not scratch the surface of the curl barrel as this will deteriorate the effectiveness of the coating.
- The product reaches a very high temperature during operation, please style with caution when using. Make sure to keep away from the scalp and skin to avoid burns.

BATTERY STATUS INDICATOR

The battery status indicator LED will change frequency depending on the amount of battery available whilst using the product.

- Static blue light = 100%-20%
- Pulsing blue light = Below 20%

When charging, the blue LED light will be flashing steadily.

When completely discharged, the blue LED light indicating the battery level will flash before the product turns itself off with an audible “beep” signal.

Please note:

- Regular use of styling products may deteriorate the surface coating over time.
- Do not scratch the surface of the product as this will deteriorate the effectiveness of the coating.
- While heating, during use and cooling, place on the product stand or on a heat resistant surface. Only hold the

product by the handle.

- The product reaches a very high temperature during operation, please style with caution when using.

AUTO SHUT-OFF

This appliance has an automatic shut off feature for added safety. If the appliance is switched on for more than 30 minutes continuously, then it will automatically switch off. If you wish to continue using the appliance after this time, switch the Power button “on” and press and hold the temperature setting button for 2 seconds. Use the temperature control to select your desired temperature.

This feature should not be considered as a substitute for ‘OFF’. ALWAYS REMEMBER TO SWITCH THE APPLIANCE OFF AND UNPLUG FROM THE MAINS WHEN NOT IN USE.

CLEANING & MAINTENANCE

- Switch the appliance off and allow to cool fully before cleaning.
- Wipe over all surfaces using a soft damp cloth. Do not use harsh abrasives or cleaners.
- Do not immerse the appliance in water or any other liquid.
- Ensure all parts are dried thoroughly with a soft towel before reusing.
- To prevent any damage to the charging cable, do not wrap the cable around the appliance, always store the cord loosely next to the appliance.
- Store in a cool dry place.

IMPORTANT SAFEGUARDS

- This appliance can be used by children aged from 16 years and above. Persons with reduced physical, sensory or mental capabilities should not use this product. Persons with lack of experience and knowledge can use the product if they have been supervised/instructed and understand the hazards involved. Children shall not play with the appliance. Cleaning and user maintenance shall not be done by children unless they are older than 16 and supervised. Burn hazard – keep the appliance and cable out of reach of children under 16 years during use and cool down.
- **WARNING:** Always ensure the voltage to be used corresponds to the voltage stated on the adaptor before plugging it into the mains socket.
- **WARNING:** This appliance must not be taken into a bathroom. It should not be used near bathtubs, basins or any other vessels containing water.
- This appliance must not be used outdoors.
- Unplug the unit when not charging.
- Do not use the appliance while drowsy or sleeping.
- Do not leave the appliance unattended whilst in use
- Do not set the appliance down while still on.
- Do not operate with wet hands.
- Do not place the appliance on any soft furnishings or materials e.g. carpet, bedding, towels, rugs etc.
- Do not operate where aerosol (spray) products are being used or where oxygen is being administered.
- Do not let the charging cable hang over the edge of a table or counter or let it come into contact with any hot surfaces.
- Do not carry the appliance by the charging cable.
- Do not wrap the charging cable around the unit. Check the cord regularly for any sign of damage.

- If the adaptor case, the adaptor cord or USB charging cable become damaged, discontinue use immediately and obtain a replacement adaptor or USB charging cable.
- Do not use the appliance if it is damaged or malfunctions.
- Do not use attachments other than those supplied with this product.
- Do not take the appliance apart. There are no serviceable parts inside.
- Let the appliance cool down before cleaning and storing away.

IMPORTANT SAFEGUARDS – BATTERY

WARNING: For the purposes of recharging the battery, only use the detachable supply unit provided with this appliance (Model No: W&T-AD1812A050200K).

TWO YEAR GUARANTEE

FKA Brands Ltd guarantees this product from defect in material and workmanship for a period of 2 years from the date of purchase, except as noted below. This FKA Brands Ltd product guarantee does not cover damage caused by misuse or abuse; accident; the attachment of any unauthorised accessory; alteration to the product; or any other conditions whatsoever that are beyond the control of FKA Brands Ltd. This guarantee is effective only if the product is purchased and operated in the UK / EU. A product that requires modification or adaptation to enable it to operate in any country other than the country for which it was designed, manufactured, approved and / or authorised, or repair of products damaged by these modifications is not covered under this guarantee. FKA Brands Ltd shall not be responsible for any type of incidental, consequential or special damages.

To obtain guarantee service on your product, return the product post-paid to your local service centre along with your dated sales receipt (as proof of purchase). Upon receipt, FKA Brands Ltd will repair or replace, as appropriate, your product and return it to you, post-paid. Guarantee is solely through service centre. Service of this product by anyone other than the service centre voids the guarantee. This guarantee does not affect your statutory rights.

For your local service centre, go to www.revamphair.com/servicecentres

WEEE explanation

This marking indicates that this product should not be disposed with other household wastes throughout the EU. To prevent possible harm to the environment or human health from uncontrolled waste disposal, recycle it responsibly to promote the sustainable reuse of material resources. To return your used device, please use the return and collection systems or contact the retailer where the product was purchased. They can take this product for environmental safe recycling.

Battery replacement

Your product includes a rechargeable battery designed to last the lifetime of the product. In the unlikely event that you should require a replacement battery, please contact Customer Services, who will supply details of the warranty and out-of-warranty replacement battery service.

Battery Directive

This symbol indicates that batteries must not be disposed of in the domestic waste as they contain substances which can be damaging to the environment and health. Please dispose of batteries in designated collection points.


SALON BRITISH BRANDS

Revamp is a trademark of Salon British Brands.

Distributed in UK by FKA Brands Limited. Somerhill Business Park,
Tonbridge, Kent TN11 0GP, UK / Tel: 01473 874016

EU Importer: FKA Brands Ltd, 29 Earlsfort Terrace, Dublin 2, Ireland
Via Giosuè Carducci 125, 20099 Sesto S. Giovanni, Milan, Italy / Tel: 0039 0236006064
csupport@revamphair.com
IB-CL2500-1120-01

Documents / Resources

	<p>REVAMP CL-2500 Liberate Cordless Hollywood Curl [pdf] User Guide CL-2500, Liberate Cordless Hollywood Curl, CL-2500 Liberate Cordless Hollywood Curl</p>
---	---

References

- [R Revamp Professional Hair Care Products](#)
- [R Revamp Professional Hair Care Products](#)
- [R Service Centres](#)