



Revamp CL-1850 Progloss Hollywood Curl Automatic Rotating User Guide

[Home](#) » [REVAMP](#) » Revamp CL-1850 Progloss Hollywood Curl Automatic Rotating User Guide 



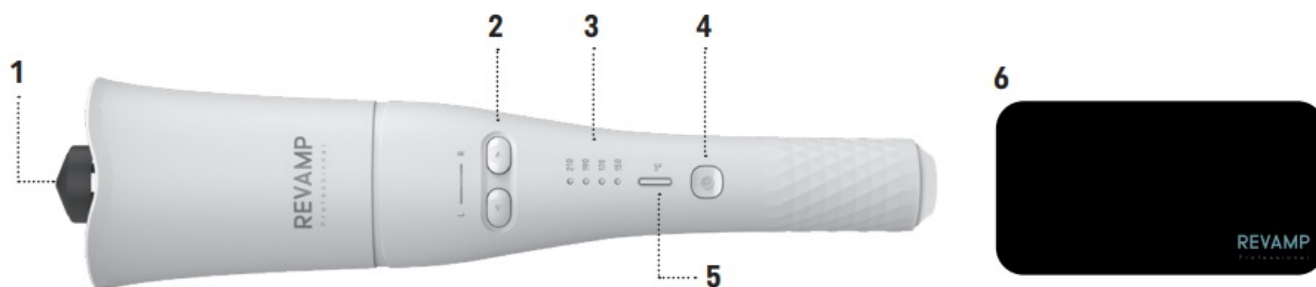


**USER GUIDE
PROGLOSS
HOLLYWOOD CURL
AUTOMATIC ROTATING SYSTEM
CL-1850**

Contents

- 1 FEATURES**
- 2 CREATING PERFECT HOLLYWOOD CURLS**
- 3 TROUBLESHOOTING**
- 4 CLEANING & MAINTENANCE**
- 5 TWO YEAR GUARANTEE**
- 6 Documents / Resources**
 - 6.1 References**
- 7 Related Posts**

FEATURES



1. Barrel
2. Curling button (with an audible beep) /right or left direction
3. Temperature indicator
4. Power button
5. Temperature setting button
6. Non-slip heat-proof silicone mat


HOLLYWOOD CURL AUTOMATIC ROTATING SYSTEM

Create beautiful glossy curls in a fast and easy way. Revamp HOLLYWOOD CURL's temperature controlled tangle- free auto-rotating system carefully wraps the hair for you, producing effortless even curls every time

PROGLOSS™ SUPER SMOOTH OILS

Every product in the Revamp haircare range is infused with PROGLOSS™ SUPER SMOOTH OILS – enriched with Argan, Keratin, and Coconut for ultimate smoothness and shine.

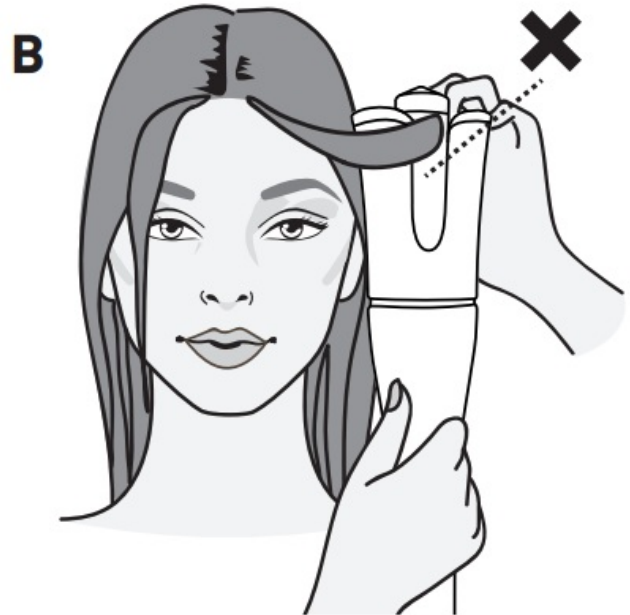
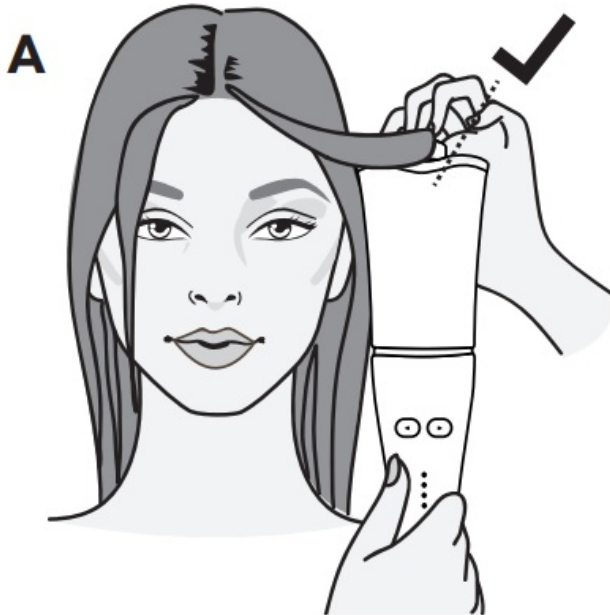
PREPARING FOR USE

- Before use, ensure hair is clean, dry, and tangle-free.
- Plug the appliance into a 220-240V mains power supply.
- Press and hold the power button  to turn on the product. Then press the Temperature setting button to your chosen temperature indicated with LED lights. The temperature indicator LED will flash until the curler is ready to use. When the curler is ready to use, the LED will remain static. See table below*

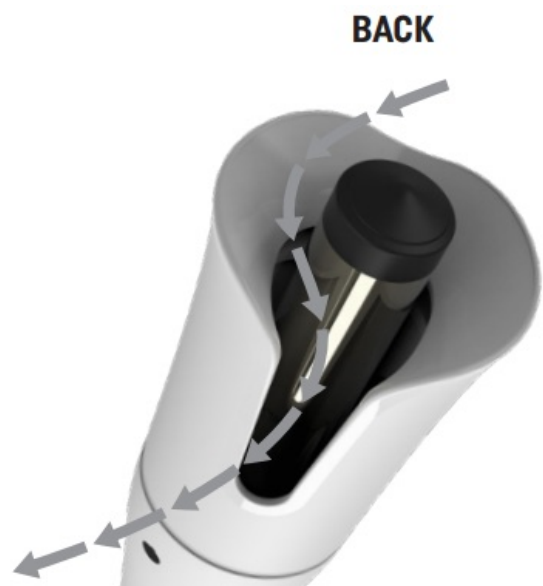
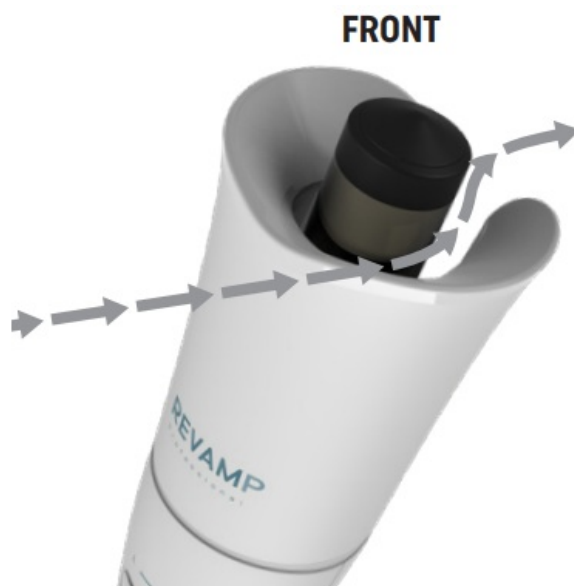
SETTING	CURL TYPE (for normal hair)	TEMPERATURE
Low	Very loose curls	150°C
Medium Low	Loose curls	170°C
Medium	Regular curls	190°C
High	Tighter curls	210°C

* type of curls recommended on normal hair

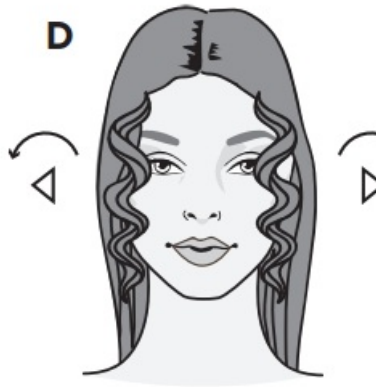
CREATING PERFECT HOLLYWOOD CURLS



- Separate each layer of hair into sections 3 cm wide. Smooth each section of hair by brushing or combing through the section (from scalp to hair ends) prior to curling.
- For extra protection, apply a heat protection spray.
- **VERY IMPORTANT** – When curling your own hair, be sure to hold the device with the buttons facing towards you, see (A). If curling a friend's hair for them, have the buttons facing towards them.
- Thread the hair through the small recess at the front of the product, then down through the deeper aperture at the back of the product as shown in (C). Hold the appliance around 50-75mm away from your head. (A)



- Choose the direction of the curl by pressing the right or left curling button (feature 2) as shown in diagram D. Work on one side of the head at a time. When you move on to the other side, press the opposite direction curling button B so that your curls are symmetrical (D).



- **VERY IMPORTANT** – Please do not put your fingers in the deeper aperture at the back of the product or try to touch the hot barrel.
- Press and hold the curling button and the hair will automatically wrap around the heated barrel.
- Keep holding the button while the hair is wrapped around the barrel and until you hear the beep.
- The curling system stops and a beep is heard after 10 seconds which is sufficient time to curl normal hair.
- After hearing the beep, release the button and wait for the automatic system to stop rotating before lowering the appliance from the hair to release your curl
- **Caution!** When the curling mechanism has stopped, always pull the product downwards to release the curl.
- Repeat for each hair section, allowing each curl time to cool in between.
- After use, switch off the appliance, unplug and allow it to cool before storing away.
- THE PRODUCT MAY JAM IF TOO MUCH HAIR IS FED AROUND THE BARREL. In this case, the product will automatically shut off. Simply pull the product

Follow us on www.revamphair.com for the latest hair tips and advice.

Please note:

- To prevent hair damage, do not curl the same section of hair more than twice
- As with all heated appliances, avoid frequent use to prevent damage to the hair
- Avoid over-use of styling products as this may deteriorate the coating on the barrel.
- The heated barrel and top end of the appliance get very hot during use. To avoid burns, keep the barrel away from direct contact with the head and only hold the appliance by the handle.
- While heating, during use and cooling, place on the REVAMP heat-resistant mat. Only hold the product by the cool handle.
- Do not scratch the surface of the curling barrel as this will deteriorate the effectiveness of the coating.
- The product reaches a very high temperature during operation, please style with caution when using. Make sure to keep away from the scalp and skin to avoid burns.

AUTO SHUT-OFF

This appliance has an automatic shut-off feature for added safety. If the appliance is switched on for more than 30 minutes continuously, then it will automatically switch off. If

you wish to continue using the appliance after this time, press the power button to switch it on. Use the temperature control to select your desired temperature.

This feature should not be considered as a substitute for 'OFF'. ALWAYS REMEMBER TO SWITCH THE APPLIANCE OFF AND UNPLUG FROM THE MAINS WHEN NOT IN USE.

TROUBLESHOOTING

THE PRODUCT MAY JAM IF TOO MUCH HAIR IS FED AROUND THE BARREL. In this case, the product will automatically shut off. Simply pull product down to release the hair and turn back on again to continue using.

CLEANING & MAINTENANCE

- Switch the appliance off, unplug from the mains, and allow it to cool fully before cleaning.
- Wipe over all surfaces using a soft damp cloth. Do not use harsh abrasives or cleaners.
- Do not immerse the appliance in water or any other liquid.
- Ensure all parts are dried thoroughly with a soft towel before reusing.
- To prevent cord damage, do not wrap the cord around the appliance, always store the cord loosely next to the appliance.
- Store in a cool dry place.

IMPORTANT SAFEGUARDS

THE PRODUCT MAY JAM IF TOO MUCH HAIR IS FED AROUND THE BARREL. In this case, the product will automatically shut off. Simply pull product down to release the hair and turn back on again to continue using.

- This appliance can be used by children aged 16 years and above. Persons with reduced physical, sensory or mental capabilities should not use this product. Persons with a lack of experience and knowledge can use the product if they have been supervised/instructed and understand the hazards involved. Children shall not play with the appliance. Cleaning and user maintenance shall not be done by children unless they are older than 16 and supervised. Keep the appliance and cable out of reach of children under 16 years during use and cool down.
- **WARNING:** for additional protection the installation of a residual current device (RCD) with a rated residual operating current not exceeding 30mA is advisable. Ask an electrician for advice.
- Always ensure the voltage to be used corresponds to the voltage stated on the unit before plugging the appliance into the mains socket.
- THIS APPLIANCE SHOULD BE UNPLUGGED FROM THE MAIN SUPPLY WHEN NOT IN USE.
- **WARNING:** This appliance must not be taken into a bathroom. It should not be used near bathtubs, basins, or any other vessels containing water.
- This appliance must not be used outdoors.
- Avoid allowing any part of the appliance to come into contact with the face, neck, or scalp.
- Do not use the appliance while drowsy or sleeping.
- Do not leave the appliance unattended while plugged in.
- Only set the appliance down while still on, on the REVAMP heat-resistant mat.
- Do not operate with wet hands.
- Do not place the appliance on any soft furnishings or materials e.g. carpet, bedding, towels, rugs, etc.
- Do not operate where aerosol (spray) products are being used or where oxygen is being administered.
- Do not let the cord hang over the edge of a table or counter or let it come into contact with any hot surfaces.
- Do not carry the appliance by the power cord.
- Do not wrap the cord around the unit. Check the cord regularly for any sign of damage.
- If the power cord becomes damaged, discontinue use immediately and return the appliance to your nearest

authorized service dealer for repair or replacement in order to avoid a hazard.

- Do not use the appliance if it is damaged or malfunctions.
- Do not use attachments other than those supplied with this product.
- Do not take the appliance apart. There are no user-serviceable parts inside.
- Let the appliance cool down before cleaning and storing away.
- Please do not put your fingers in the deep aperture at the back of the product or try to touch the hot barrel

TWO YEAR GUARANTEE

FKA Brands Ltd guarantees this product from defects in material and workmanship for a period of 2 years from the date of purchase, except as noted below. This FKA Brands

Ltd product guarantee does not cover damage caused by misuse or abuse; accident; the attachment of any unauthorised accessory; alteration to the product; or any other conditions whatsoever that are beyond the control of FKA Brands Ltd. This guarantee is effective only if the product is purchased and operated in the UK / EU. A product that

requires modification or adaptation to enable it to operate in any country other than the country for which it was designed, manufactured, approved and/or authorised or repaired of products damaged by these modifications is not covered under this guarantee. FKA Brands Ltd shall not be responsible for any type of incidental, consequential or special damages.

To obtain guaranteed service on your product, return the product post-paid to your local service centre along with your dated sales receipt (as proof of purchase). Upon receipt,

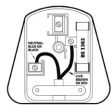
FKA Brands Ltd will repair or replace, as appropriate, your product and return it to you, post-paid. The guarantee is solely through the service centre. The service of this product by anyone other than the service centre voids the guarantee. This guarantee does not affect your statutory rights.

For your local service centre, go to www.revamphair.com/servicecentres

WEEE explanation



■ This marking indicates that this product should not be disposed of with other household wastes throughout the EU. To prevent possible harm to the environment or human health from uncontrolled waste disposal, recycle it responsibly to promote the sustainable reuse of material resources. To return your used device, please use the return and collection systems or contact the retailer where the product was purchased. They can take this product for environmentally safe recycling.



Plug (UK only)

If the plug on this appliance is damaged, it can be replaced with a BS 1363 plug, fitted with a 3A BS 1362 fuse. The recommended fuse for this appliance is 3 amp. Care must be taken when changing the plug. If in doubt, contact a qualified electrician.



SALON BRITISH BRANDS

Revamp is a trademark of Salon British Brands.

Distributed in UK by FKA Brands Limited. Somerhill Business Park,
Tonbridge, Kent TN11 0GP, UK / Tel: 01473 874016


EU Importer: FKA Brands Ltd, 29 Earlsfort Terrace, Dublin 2, Ireland

Via Giosuè Carducci 125, 20099 Sesto S. Giovanni, Milan, Italy / Tel: 0039 0236006064

csupport@revamphair.com

IB-CL1850-0222-01

Documents / Resources

 The image shows the cover of a user guide for the Revamp CL-1850 Progloss Hollywood Curl Automatic Rotating. The cover is white with a black and grey image of the curling iron. Text on the cover includes 'Revamp PROFESSIONAL', 'USER GUIDE', 'PROGLOSS HOLLYWOOD CURL', and 'CL-1850'.	<p>Revamp CL-1850 Progloss Hollywood Curl Automatic Rotating [pdf] User Guide Rotating, Curl, Hollywood, Progloss, CL-1850</p>
--	--

References

- [R Revamp Professional Hair Care Products](#)
- [R Service Centres](#)
- [🌐 tinyurl.com/GermanyWEEE](https://tinyurl.com/GermanyWEEE)