



## REV-A-SHELF RV-8PSC-11-5 20-Quart Soft Close 1 Pull-out Trash Instruction Manual

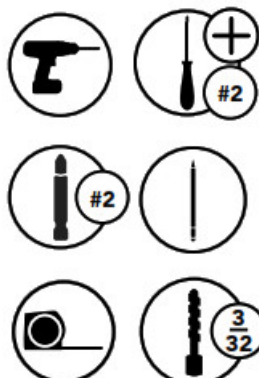
[Home](#) » [REV-A-SHELF](#) » REV-A-SHELF RV-8PSC-11-5 20-Quart Soft Close 1 Pull-out Trash Instruction Manual



### Contents

- [1 TOOLS REQUIRED:](#)
- [2 ESTIMATED ASSEMBLY TIME:](#)
- [3 CARE AND MAINTENANCE:](#)
- [4 Documents / Resources](#)
  - [4.1 References](#)
- [5 Related Posts](#)

### TOOLS REQUIRED:



**ESTIMATED ASSEMBLY TIME:**

**15 MIN**

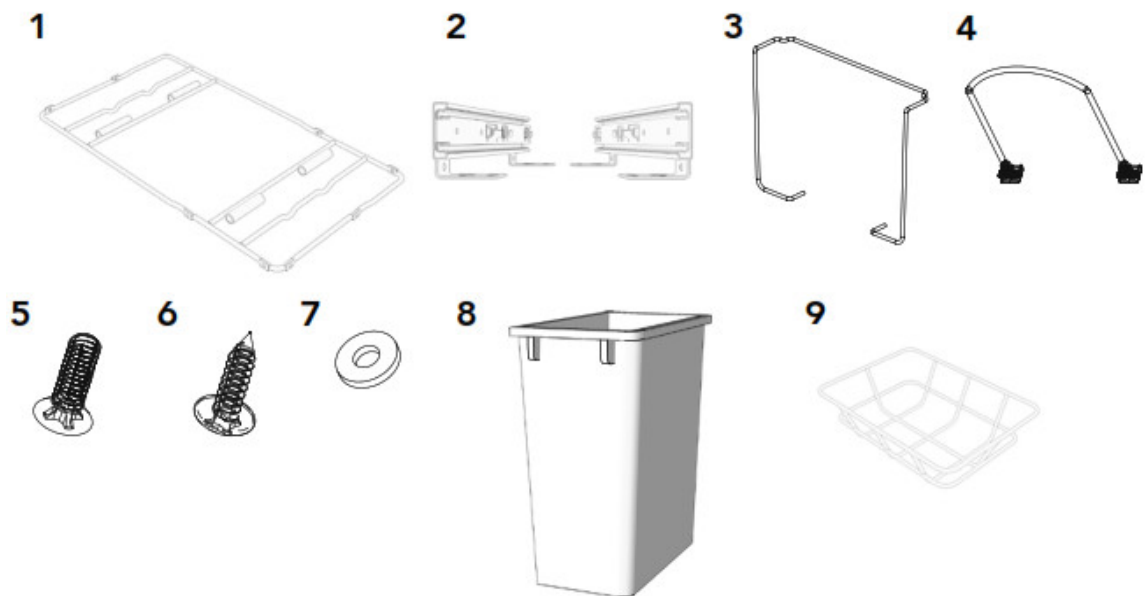
**CARE AND MAINTENANCE:**

Clean with a damp cloth and wipe parts dry.



Parts List		
No.	Description	Qty
1	Frame	1
2	Slides	2
3	Uprights	2
4	Handle	1
5	#8-32 X 3/8" Flat Head Machine Screws	4
6	#8 X 3/4" Truss Head Deep Thread Screws	4
7	#8 Washers	4
8	Waste Container (20 qt or 32 qt)	1
9	Wire Basket*	1

\* Dependent on unit purchased. If your unit did not come with a basket, you can call Rev-A-Shelf's customer service team to order one. Part Number: RV814BB-1-CR



## INSTALLATION INSTRUCTIONS: CHROME UNIVERSAL WASTE PULLOUT

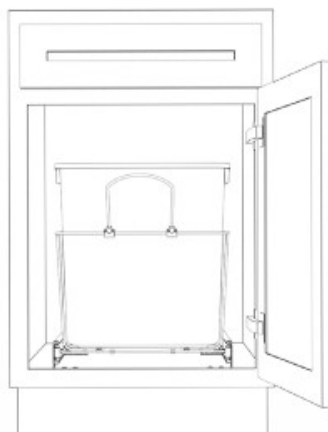
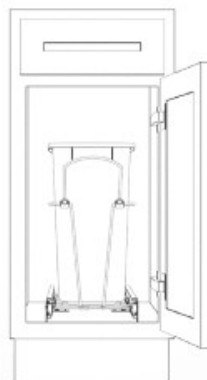
I-RUKD-1121



### STEP 1

Determine the position you would like to install your waste container, ensuring cabinet frame or hinges does not interfere with the unit (See Figure 1).

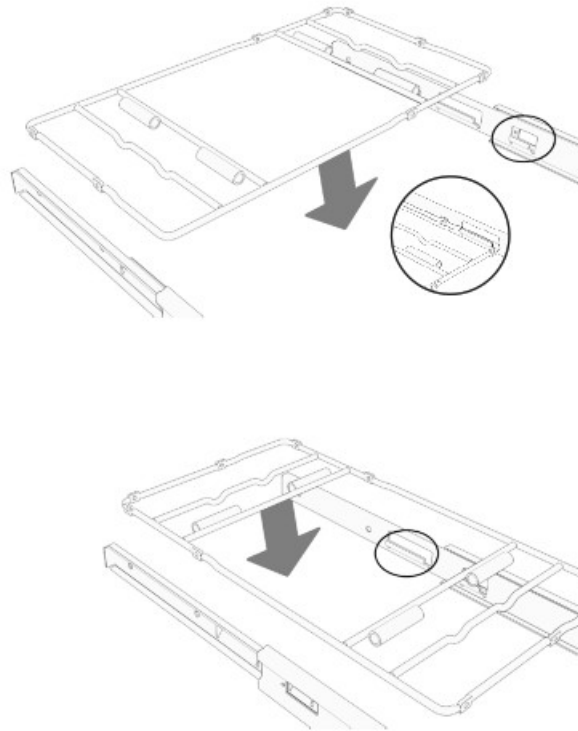
FIG. 1



### STEP 2

Match the frame hole locations with slide hole locations and snap the frame into the slides (See Figure 2).

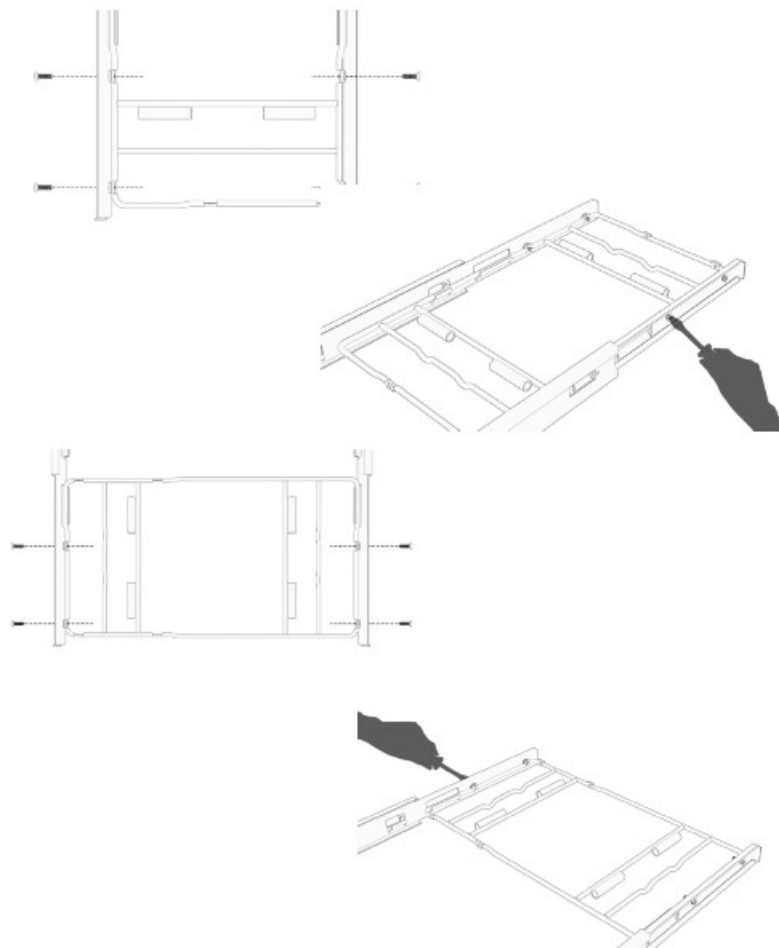
**FIG. 2**

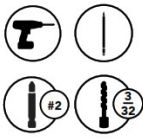


**STEP 3**

Extend the slides to full extension and use the (4) #8 washers and #8-32 X 3/8" flat head machine screws to secure the frame to the slides (See Figure 3).

**FIG. 3**

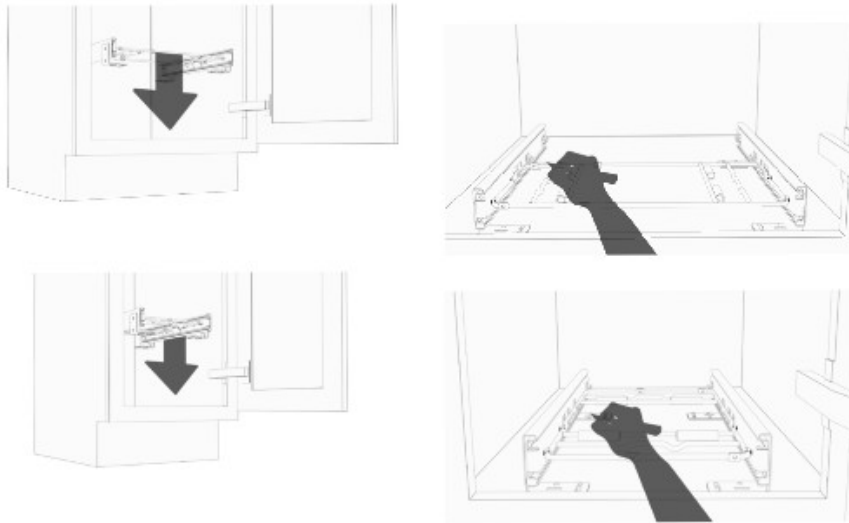




#### STEP 4

Place frame in desired position (determined in Step 1) inside the cabinet. Mark and pre-drill screw locations using 3/32" drill bit and #8 x 3/4" truss head deep thread screws (See Figure 4).

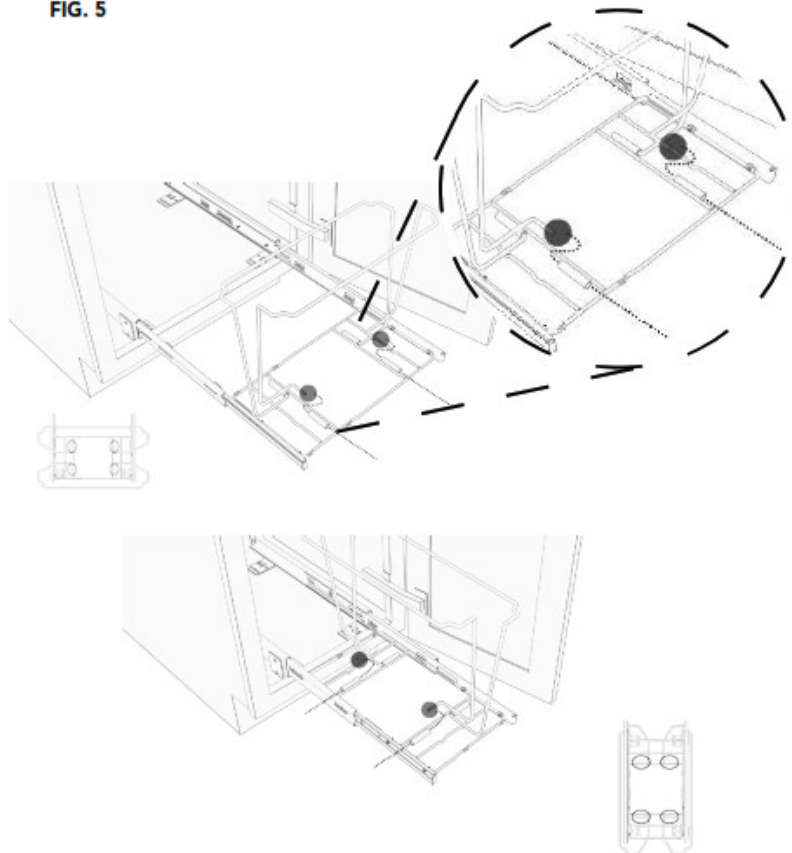
FIG. 4



#### STEP 5

Attach the uprights to the frame and place trash can in the uprights (See Figure 5).

FIG. 5

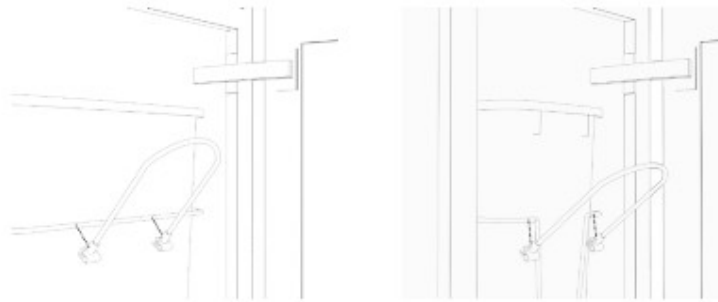


#### STEP 6

Snap the handle to the front upright. (See Figure 6).

**Note:** Continue to Step 7 if you have a unit that comes with a rear basket.

**FIG. 6**

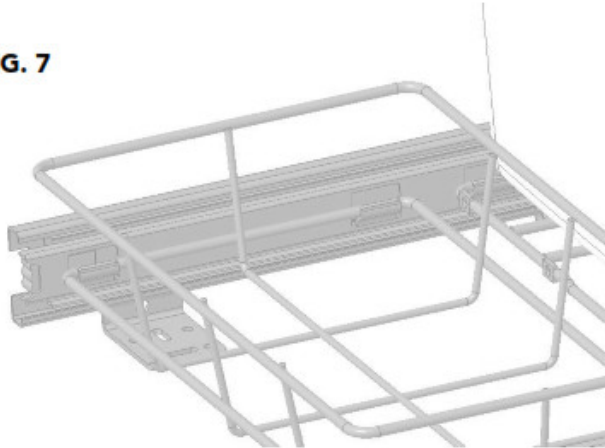


#### **STEP 7**

Line up the basket to back clips on the frame and snap into place (See Figure 6).

**Note:** Not all units come with a wire basket

**FIG. 7**



12400 Earl Jones Way

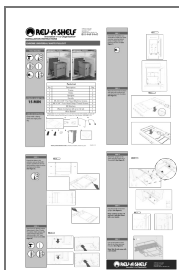
Louisville, KY 40299

[rev-a-shelf.com](http://rev-a-shelf.com)

Customer Service: 800-626-1126



## **Documents / Resources**



[REV-A-SHELF RV-8PSC-11-5 20-Quart Soft Close 1 Pull-out Trash](#) [pdf] Instruction Manual  
RV-8PSC-11-5 20-Quart Soft Close 1 Pull-out Trash, RV-8PSC-11-5, 20-Quart Soft Close 1 Pull  
-out Trash, Close 1 Pull-out Trash, Pull-out Trash

## **References**

-  [Rev-A-Shelf](http://Rev-A-Shelf)