




REV-A-SHELF I-4VDI-0225 Adjustable Deep Drawer Instructions

[Home](#) » [REV-A-SHELF](#) » REV-A-SHELF I-4VDI-0225 Adjustable Deep Drawer Instructions 

Contents

- [1 REV-A-SHELF I-4VDI-0225 Adjustable Deep Drawer](#)
- [2 Specifications](#)
- [3 TOOLS REQUIRED](#)
- [4 Care and Maintenance](#)
- [5 FAQs](#)
- [6 Documents / Resources](#)
 - [6.1 References](#)



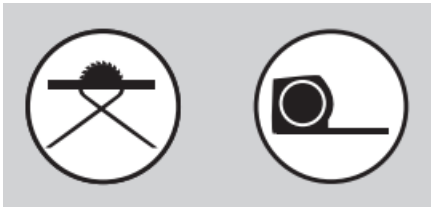
REV-A-SHELF I-4VDI-0225 Adjustable Deep Drawer



Specifications

- Manufacturer: Rev-A-Shelf
- Address: 12400 Earl Jones Way, Louisville, KY 40299
- Customer Service: [800-626-1126](tel:800-626-1126)
- Model Number: I-4VDI-0225

TOOLS REQUIRED

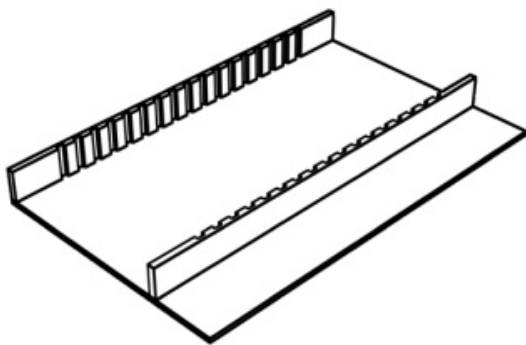


Make sure you have the following tools before proceeding:

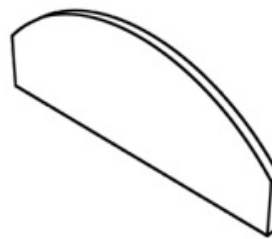
- Damp cloth

Parts List:		
No.	Description	Qty
A	Adjustable Drawer Insert	1
B	Deep Dividers	9

A.



B.



ESTIMATED ASSEMBLY TIME

- 10 MIN

Care and Maintenance

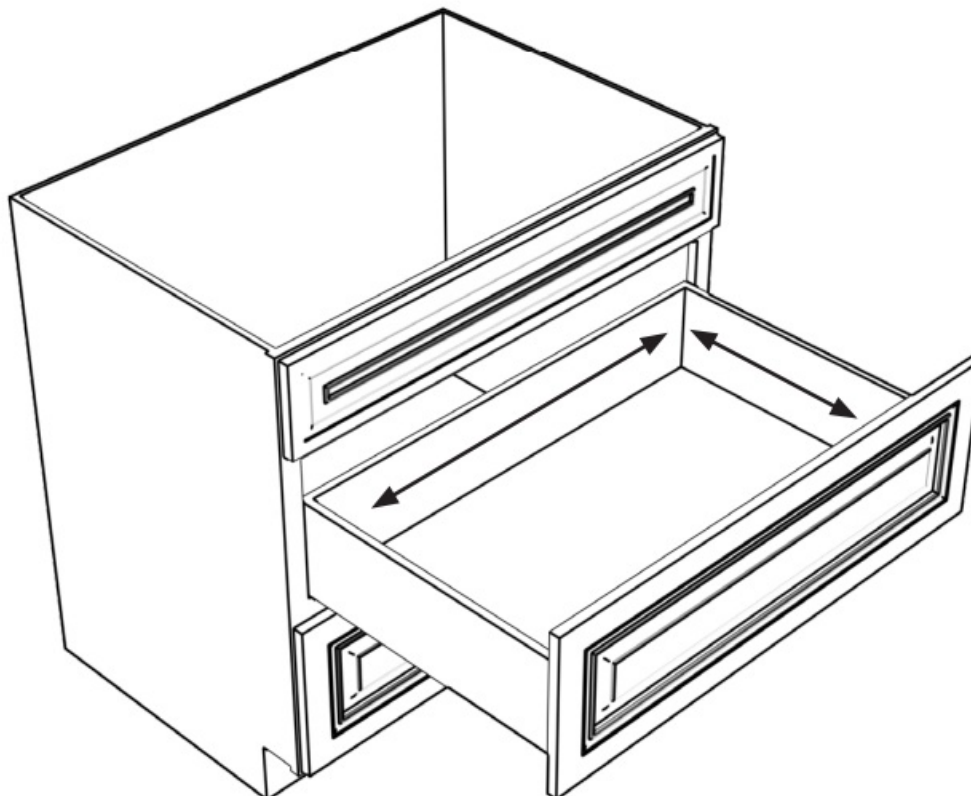
Clean with a damp cloth and wipe parts dry.

1. Clean the product with a damp cloth.
2. Wipe all parts dry to prevent water damage.

STEP 1

Measure inside drawer dimension (See Figure 1).

Fig. 1

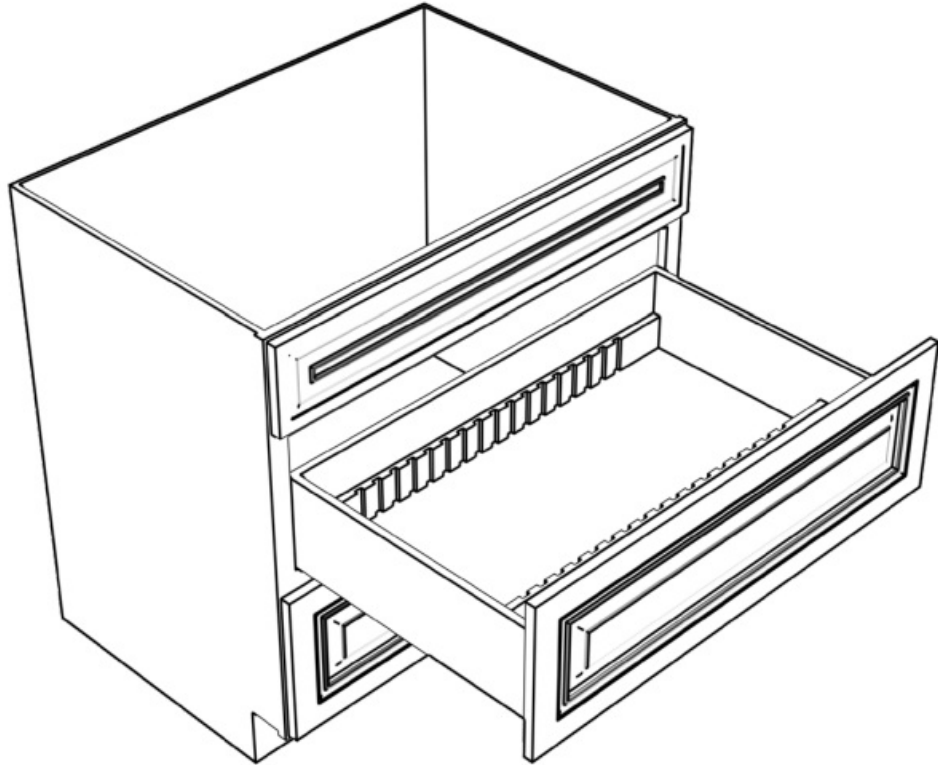


STEP 2

Transfer measurements to insert. If the insert is too large for the drawer, carefully trim it to fit. Drop insert into the drawer (See Figure 2).

Note: Table Saw recommended.

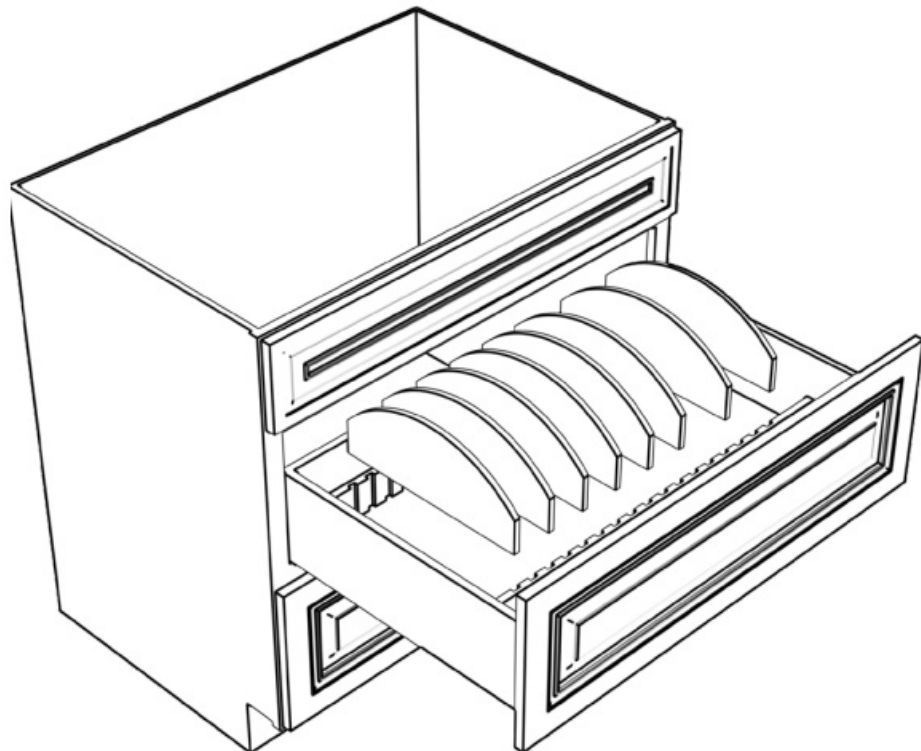
Fig. 2



STEP 3

Position the Deep Dividers in your desired configuration (See Figure 3).

Fig. 3



Customer Service: [800-626-1126](tel:800-626-1126) | rev-a-shelf.com

12400 Earl Jones Way

Louisville, KY 40299

rev-a-shelf.com

Customer Service: [800-626-1126](tel:800-626-1126)



FAQs

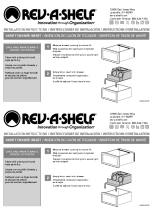
Q: How often should I clean the product?

A: It is recommended to clean the product with a damp cloth regularly, especially if it is used frequently.

Q: Can I use cleaning agents other than water?

A: It is best to stick to using a damp cloth for cleaning. Avoid harsh chemicals that may damage the product's surface.

Documents / Resources

	<p>REV-A-SHELF I-4VDI-0225 Adjustable Deep Drawer [pdf] Instructions I-4VDI-0225 Adjustable Deep Drawer, I-4VDI-0225, Adjustable Deep Drawer, Deep Drawer</p>
--	---

References

-  [Rev-A-Shelf](#)
- [User Manual](#)

Manuals+, Privacy Policy

This website is an independent publication and is neither affiliated with nor endorsed by any of the trademark owners. The "Bluetooth®" word mark and logos are registered trademarks owned by Bluetooth SIG, Inc. The "Wi-Fi®" word mark and logos are registered trademarks owned by the Wi-Fi Alliance. Any use of these marks on this website does not imply any affiliation with or endorsement.