

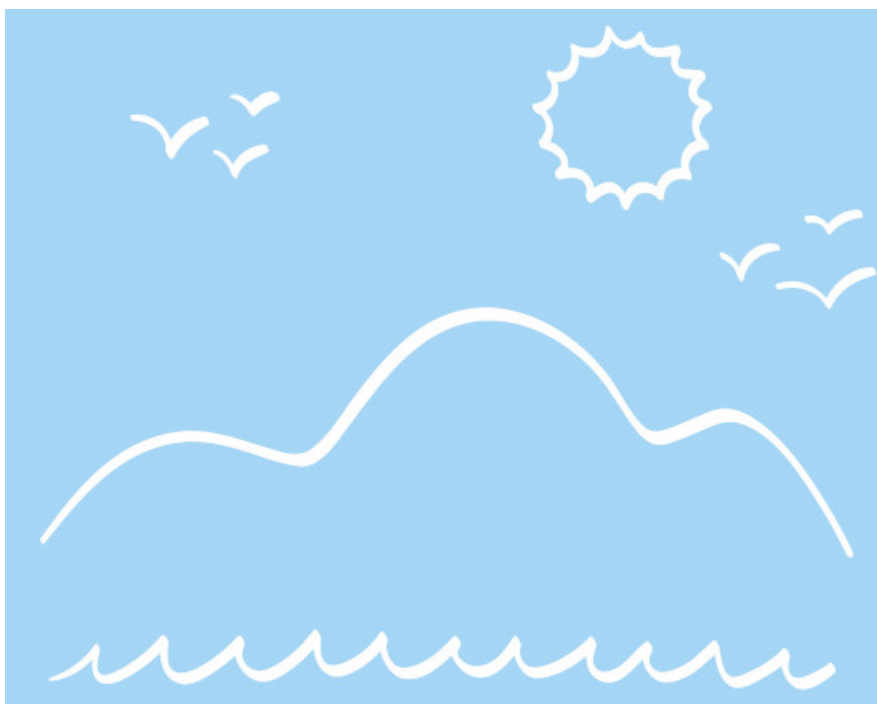


retrospec 3707 Weekender Plus 10-Inch Inflatable Stand Up Paddleboard Owner's Manual

[Home](#) » [retrospec](#) » retrospec 3707 Weekender Plus 10-Inch Inflatable Stand Up Paddleboard Owner's Manual



Owner's Manual
INFLATABLE STAND UP PADDLEBOARDS



Contents

- 1 Oh, hey!
- 2 Let's Keep it Safe Out There
- 3 Warning!
- 4 What's In the Box?
- 5 What's Not in the Box?
- 6 General Use Information
- 7 Caring for your iSUP
- 8 Inflation Instructions
- 9 Fin Installation
- 10 Deflation and Storage
- 11 Warranty
- 12 Contact Us
- 13 Documents / Resources
- 14 Related Posts

Oh, hey!

We're so happy to have you along for the ride. Your new inflatable stand-up paddleboard comes with everything you need to make a splash.

A little about us:

The outside is for everyone, but not everyone feels comfortable outside. So we set out to make everyone feel at home in the open air. We believe that all people, regardless of background or experience, should enjoy the life-affirming, eye-opening beauty of nature.

The Retrospec Pledge: Invite everyone, regardless of experience Focus on having fun, not being first Be nice. It's that simple. Keep spirits high, even if energy is low Leave judgment at the doorstep

Turns out, you're a natural. It doesn't have to be intense to be super fun, but you know that. Regardless of your experience, we're here to guide you at every step so you can feel at home outside.

Need some help? Hit us up:

team@retrospec.com

Instagram: @retrospec

Let's Keep it Safe Out There



Warning!

Failure to follow the warnings; precautions; and instructions below and throughout this manual may lead to serious injury or death!

Do not exceed your physical ability:

Determine how long you are able to paddle or swim before using your paddleboard

Always paddle with others:

Avoid paddling alone

Always wear a leash:

Prevents you from becoming separated from your board in case you fall

Familiarize yourself with the body of water where you plan on using your paddleboard:

Check for any known hazardous areas, hours of operation, and where the nearest help can be reached in case of emergency

Don't use your paddleboard in severe weather or in strong windy conditions

Slip hazard:

Hull materials may become slippery when wet. Always wear slip-resistant footwear

Hypothermia can cause death:

It can occur in relatively warm water. Survival time decreases dramatically as the water temperature drops as quickly as 15 minutes in 35 degrees Fahrenheit water (2 degrees celsius). Wear a wet or dry suit when necessary

Wear a coast guard approved personal flotation device

Carry a whistle on board (Required by law beyond the surf line):

This allows you to signal other boaters

Never use this paddleboard after sunset:

Always carry a waterproof flashlight in case you are caught in the water after dark to warn other boaters of your presence. Required by US law

Inform others of your paddling plans:

Where you plan to go and how long you plan to be gone

Minors must be supervised at all times

DO NOT consume alcohol or drugs, this may affect your ability to safely operate this paddleboard

Avoid riding your board through shallow water:

Fins may strike submerged objects causing damage to the fins and/or fin boxes which is not covered by warranty

What's In the Box?

If you're missing any of these items, please let us know as soon as possible!

- Your new rolled-up inflatable stand up paddleboard (iSUP)
- Floor hand-pump with integrated gauge & quick attach stocking
- 3 piece aluminum length adjustable paddle
- Rucksack backpack
- Fins
 - Weekender-10'/Nano/Yogi/Plus – 3 pieces
 - Weekender Crew/Crew XL – 5 pieces
 - Weekender Tour – 1 piece
- Waterproof smartphone case Leash

What's Not in the Box?

(but you might want anyway for safety and security)

- US Coast Guard Approved Personal Flotation Device (PFD)
- UV 30+ protective clothing
- Slip-resistant footwear
- Waterproof flashlight
- Sunscreen
- Whistle
- Hat

General Use Information

1. Stand at the center of the board facing forward with your feet approximately shoulder-width apart and your knees slightly bent.
2. Place one hand on top of the paddle handle. Place the other hand on the shaft of the paddle about 24" below the handle.
3. To go straight, paddle alternating from left to right side of board using the same number of strokes on each side.
4. To turn left, paddle on the right side of the board. To turn right, paddle on the left side.

Caring for your iSUP

- We have a feeling you're going to love your new board. There are a few things you should know about caring for your board before hopping on. Hey, we all need some TLC.

Do not store your board (inflated or uninflated) in direct sunlight or excessive heat conditions, such as inside a closed vehicle. Excessive heat will increase the pressure in the board beyond the recommended PSI and may cause irreversible damage.

→If you must store your inflated board in the sun temporarily, protect it by placing it in the shade or by covering it in a towel. Release a small amount of air pressure to allow it room to expand from the heat. Pump it back to full pressure before using it again.

- Rinse your board with fresh water after every use. Allow the deck pad to dry thoroughly before rolling or storing.
- Properly Roll Board
→Roll your board from the nose toward the valve end and allow the board to deflate completely.



Inflation Instructions

1. Preparing the Board:

with the deck and valve facing up

2. Preparing the Valve:

Remove the valve cover. Make sure the red valve is locked to keep air from escaping (up position) If the red valve stem is down and air is escaping, turn the red valve stem counterclockwise to close the valve

3. Assembling the Pump:

Install the pressure gauge onto the pump handle – start with the gauge facing down and screw on by rotating clockwise until it stops to secure it to the handle. The gauge face should

4. Secure the Hose to the Board:

Push the hose into the air valve and twist clockwise until you feel it lock onto the valve

5. Inflating the Board:

Begin pumping air into the board. Note that the pressure gauge will not register pressure until the board reaches 10psi. The board will begin to take shape after 4min/100 full pumps. Once the board reaches the desired pressure (15psi/225 full pumps), remove the hose from the valve and replace the valve cap onto the valve body. Recommended pressure 12-15psi. Check pressure before each use. Do not transport fully pressurized. Traveling from low to high altitudes will increase air pressure in the chamber and possibly damage your board due to over-pressurization

6. Do Not Exceed the Recommended Pressure!

Do not use an unregulated air compressor to fill the board. Exceeding the recommended pressure will permanently damage the board and voids the warranty

7. If the valve leaks:

Use the supplied crown wrench to tighten the valve clockwise and stop the leak

	Weekender 10'	Weekender Plus 10'	Weekender Yogi 10'	Weekender Tour 11'	Weekender Nano 8'	Weekender Crew 12'	Weekender Crew XL 16'
Weight Limit lbs.	275	300	275	300	140	500	1200
PSI Recommended	12	12	12	12	12	12	12

Fin Installation

Tri-Fin & 5 Fin Models:

1. Slide the central fin into the center mounting slot and lock in place by screwing the locking pins into the base
2. Slide the two smaller outer fins (4 fins for Weekender Crew) into the slots on the outside of the hull and lock them in place by screwing the locking pins into the base
3. Some force may be necessary to fully insert the fins into their slots

Single-Fin Model:

Place the round pegs at the back of the fin into the fin box. Locate the clip at the front of the fin box and place it at the "c" notch at the front of the fin. Press down at the front of the fin to lock it in place into the fin box

Deflation and Storage

1. Fin Removal

Lay board with fins facing up on a clean flat surface free of any debris or sharp objects. Remove the central and side fins by pressing the tab on the locking clip and sliding them out of their mounts

2. Clean and Dry the Board:

With the board inflated and the valve close, rinse the board with fresh water to clean it of any sand or debris. Allow the board to dry completely. Do not store board while still wet to prevent mildew build-up

3. Deflating the Board:

- a. Push down on the red valve for 10 seconds to "burp" air pressure from the inside the

board before turning the reed valve into the down/release position. (If this step is not done, the strong air pressure can rupture the valve's internal mechanism.

b. Turn the red valve stem clockwise and push in to release the air. Keep your face away from the valve as the air will escape rapidly and could cause harm

4. Rolling up the Board:

a. With the board deflated and the valve still open, start at the nose of the board opposite the valve. Fold 3 in. over and roll the board as tight as you can until reaching the valve.

b. Close the valve stem by turning the red valve stem counterclockwise to the up/closed position and replacing the valve cap.

c. Wrap the belt around the rolled-up board and fasten the buckle

Warranty

Retrospec warrants manufacturer defects on all paddleboards for up to two years from the date of purchase. We warrant against any manufacturer defect in workmanship and materials during this two-year window. Determining manufacturer defect is at the sole discretion of Retrospec.

We reserve the right to request images or otherwise for proof of manufacturer defect. This warranty commitment does not cover the claim conditions listed below.

This warranty commitment for inflatable stand up paddleboards (iSUPs) does not cover claim conditions including:

- Damage or defects incurred by impact with any damaging materials or objects including, but not limited to rocks, shoals, docks, other boards, boats, etc. are NOT covered by the warranty.
- Damage or defects incurred by use outside of the board's intended purpose is NOT covered by the warranty.
- Damage incurred due to normal wear and tear of the board is NOT covered by the warranty.
- Damage or defects incurred by transporting, loading, unloading, dropping, or general mishandling of the board is NOT covered by the warranty.
- Damage or defects incurred due to incorrect prolonged storage of board including, but not limited to storing in extreme temperatures over 90°F and/or under 32°F, prolonged exposure to direct sunlight while not in use, or prolonged storage in closed, damp conditions is NOT covered by the warranty.
- Boards used in rental, commercial, classes, or otherwise are NOT covered under warranty
- Damage incurred by improper forcing, shoving, or general improper fin installation are NOT covered by the warranty.

Any modifications made to your inflatable stand up paddleboard including, but not limited to, the replacement of parts or components with non-original equipment or the addition of aftermarket motors, seats, or otherwise voids the warranty

Contact Us



Need some help with your new board? Just want to say "hey" and talk to some fellow outsiders? We're here for

that too. team@retrospec.com

Give us a follow, while you're at it:
Instagram: @retrospec
#retrospec
#readytooutdoor
Making
Nature
Second
Nature



Documents / Resources

	<p>retrospec 3707 Weekender Plus 10-Inch Inflatable Stand Up Paddleboard [pdf] Owner's M anual 3707, Weekender Plus 10-Inch Inflatable Stand Up Paddleboard</p>
------------------------------------------------------------------------------------	-----------------------------------------------------------------------------------------------------------------------------------------------------------------------------------------