



## RETROID HQ-M9P Handheld Game Console User Manual

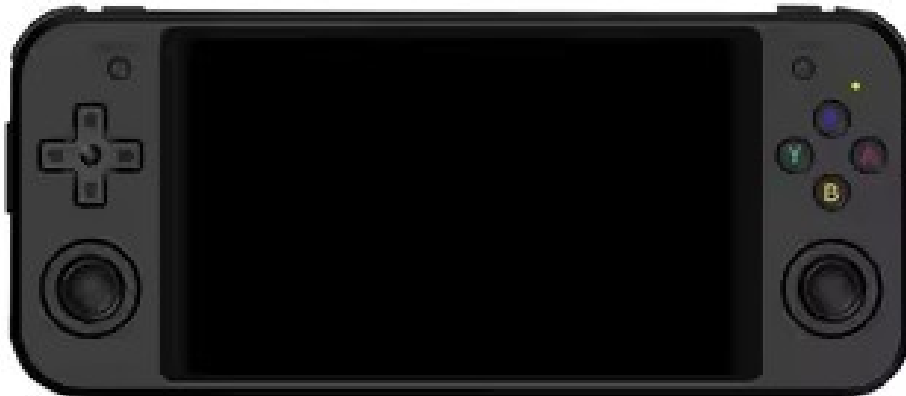
[Home](#) » [RETROID](#) » RETROID HQ-M9P Handheld Game Console User Manual 



**RETROID POCKET 5**

**USER'S MANUAL**

**PLEASE READ ALL INSTRUCTIONS CAREFULLY  
AND RETAIN FOR FUTURE USE**



## Contents

### 1 INTERFACE

#### INTRODUCTION

#### 2 Basic Information

#### 3 Game Launcher

#### 4 Network

#### 5 Synchronize

#### 6 Set Up

#### 7 Handheld Settings

#### 8 Reset

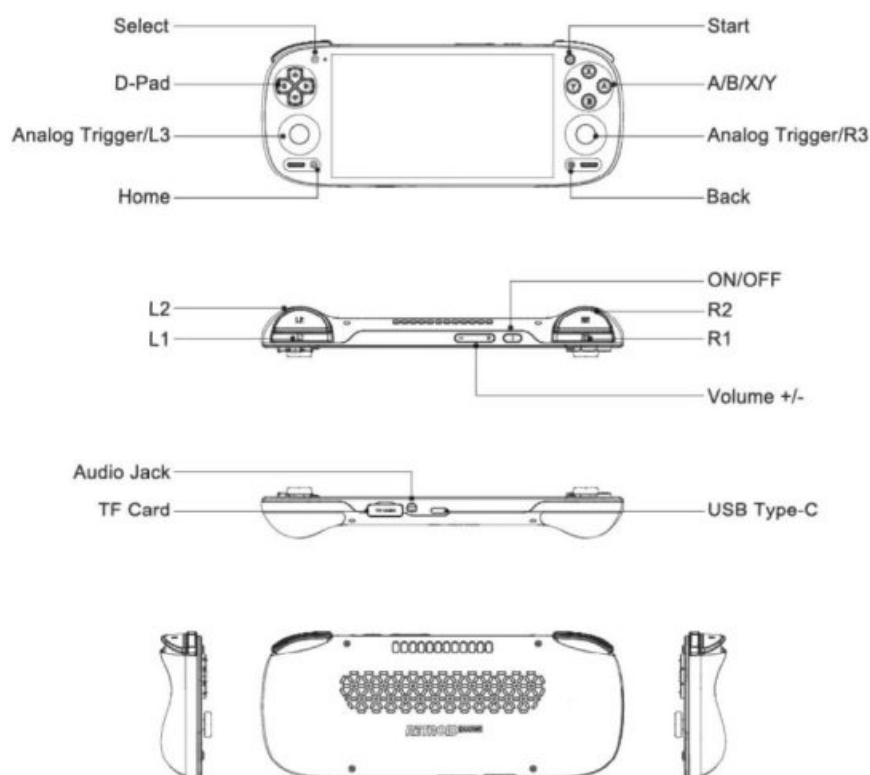
#### 9 System Update

### 10 SYSTEM PARAMETERS

#### 11 Documents / Resources

##### 11.1 References

## INTERFACE INTRODUCTION

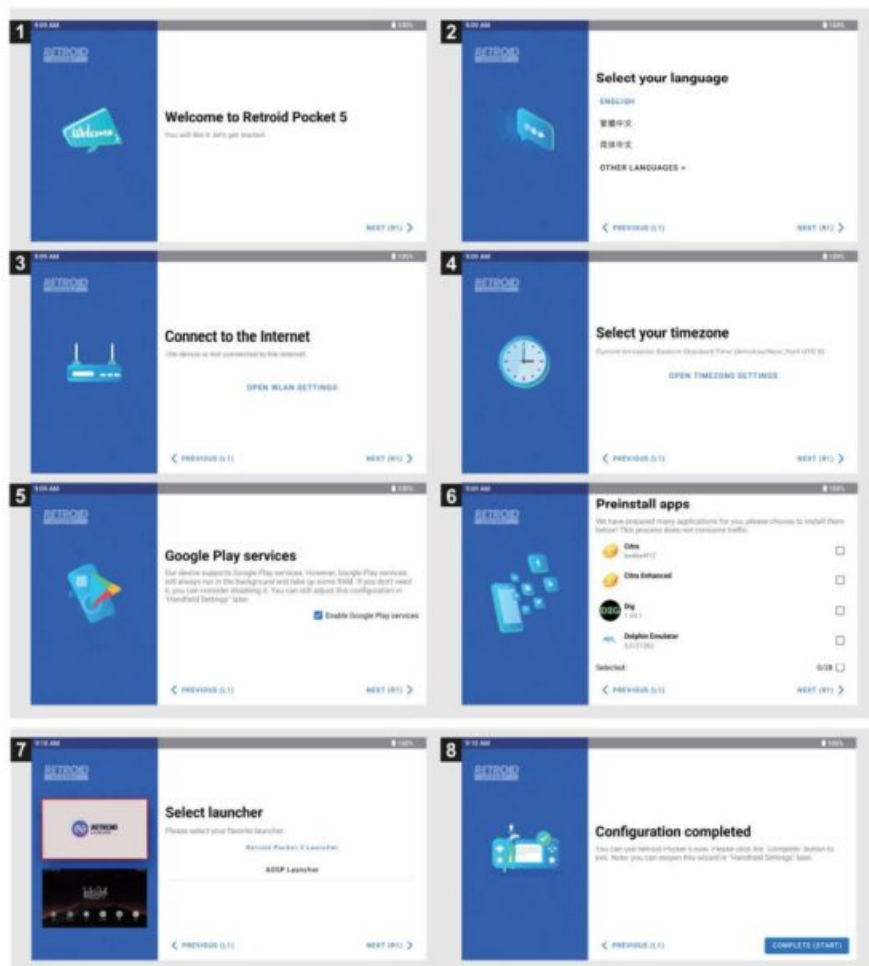


## Basic Information

### Home Screen

This product is a handheld game console with Android 13 operating system. It can independently install third-party applications. In addition to playing games, it can also play music. Entertainment functions such as watching movies and surfing the Internet have their own optimization and tuning for games. Mainly focusing on games, supplemented by entertainment, in terms of games Provides many aspects of optimization, such as active cooling, customized system, and key mapping for games, to provide game users with more Playability and compatibility, combined with portability, long battery life, and high performance, can bring joy to users at home, outdoors, and on the go.

1. Click the power button to enter the boot wizard. Follow the boot wizard prompts to complete the operation and enter the desktop.



You can customize your home screen at any time.

#### **Preview screen**

Tap and hold anywhere on the Home screen other than an icon.

The first option in the pop-up menu is to change wallpaper.

#### **Change wallpaper**

Settings > Wallpapers and select your favorite wallpaper.

#### **Move the app to another screen**

Tap and hold the app you want to move, drag it toward another screen, and release where you want it to be.

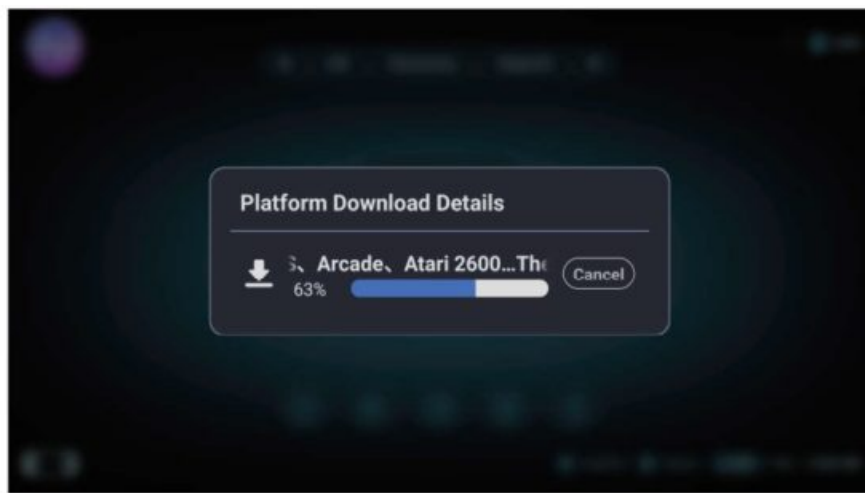
#### **Uninstall application**

1. Tap and hold the application you want to delete.
2. Select Application Information from the pop-up list.

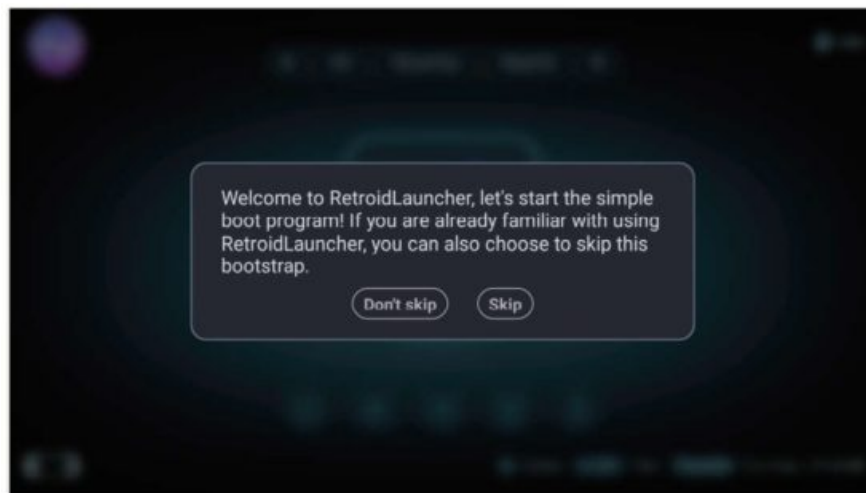
**Note:** If the pop-up list does not show Uninstall application, it means that the application cannot be uninstalled.

### **Game Launcher**

Launcher tutorial demonstration



1. Platform download.



2. Platform download details.



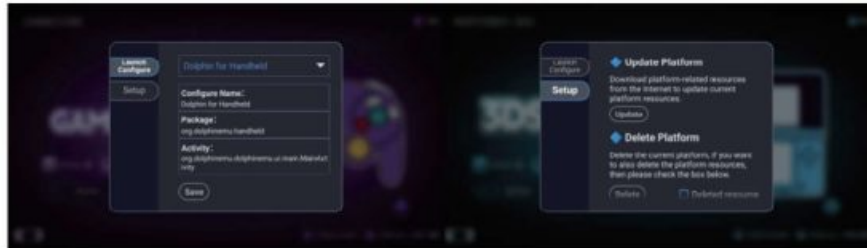
## Platform details interface

1. Game library: Enter game browsing.
2. Random play: Randomly select a game.
3. Directory: Select ROM folder.



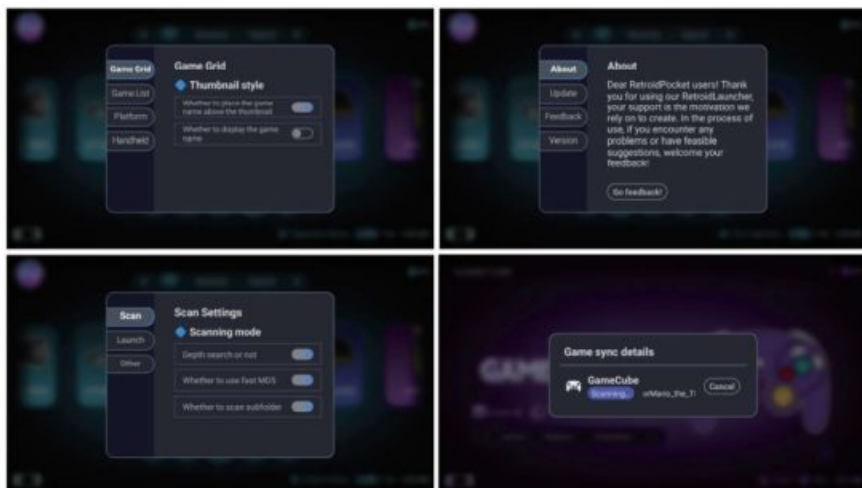
## Platform editing

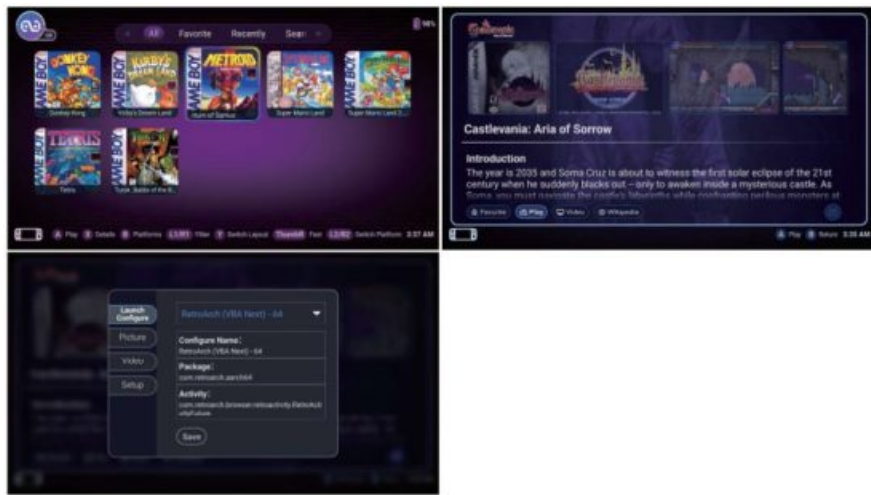
1. Launch configuration: Select the simulator to launch the game.
2. Platform settings: Platform deletion, update operation.



## Appearance settings

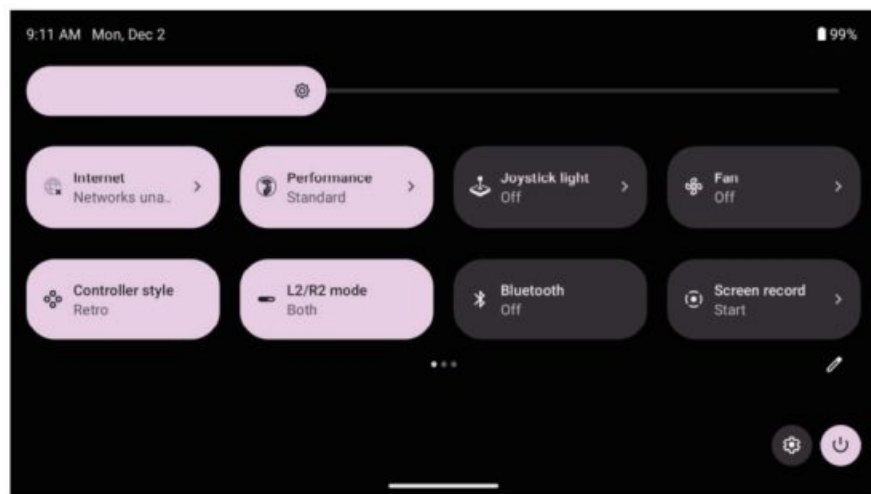
1. Game grid: Thumbnail style.
2. Platform: Whether to display in a loop.
3. Handheld peripherals, it is recommended to turn on during demonstration.
4. Game download interface.
5. Game browsing interface.
6. Game details interface.
7. Settings: Update, delete operations.






## Notification panel and shortcut switches

Swipe down from the top of the screen to view system notification messages and shortcut switches. Click the shortcut switch to quickly turn on or off various commonly used functions.



You can perform any of the following operations:

- To view notifications, swipe down from the top of the screen.
- To close the notification panel, swipe up from the bottom of the screen.
- To delete a notification, swipe left or right on the notification.
- To delete all notifications, tap at the bottom of the notification panel .
- To open the quick settings panel, swipe down once from the top of the screen, swipe down twice to display the third and fourth rows of quick settings icons, and then.
- Swipe left once to display another page of quick settings icons.
- To close the quick settings panel, swipe up from the bottom of the screen.

## Network

Before you can connect to the Internet, you need to set up your wireless network.

- Set up a Wi-Fi network.
- Set up VPN network.

### Set up a Wi-Fi network

1. Go to Settings > Network & Internet > Internet.

2. Open the WLAN module and click a WLAN hotspot in the list to connect to the internet.

**Note:** When accessing a secure connection, you will need to enter your login name and password to connect.

### Set up a Wi-Fi network

1. Go to Settings > Network & Internet > Internet.
2. Open the WLAN module and click a WLAN hotspot in the list to connect to the Internet.

**Note:** When accessing a secure connection, you will need to enter your login name and password to connect.

### Set up VPN network

You can use a VPN to connect and network resources within a local area network, such as a corporate network. You may need to set up the VPN before use.

For specific configuration information, please consult your network administrator. To define one or more VPN settings, you can:

1. Go to Settings > Network & Internet > VPN
2. Click + to edit the VPN configuration file, including server name, type, server address, username and password, always turn on VPN, and then Click Save.
3. Tap and hold the VPN server name to modify or delete the VPN.

## Synchronize

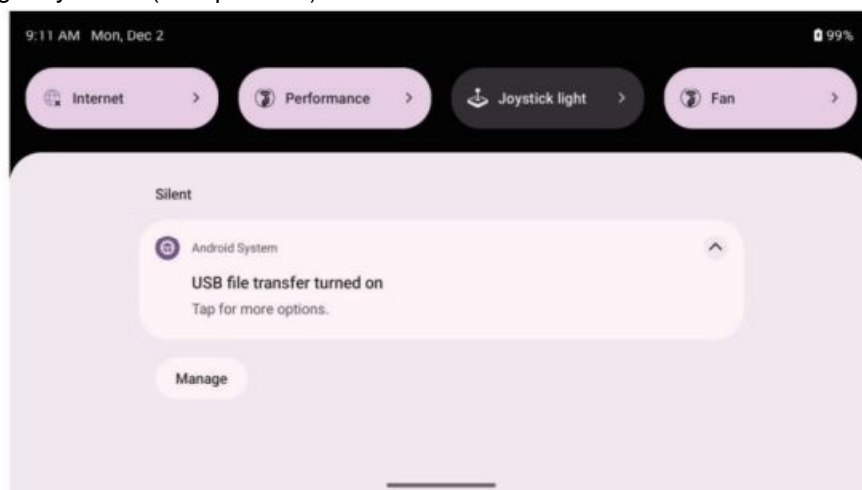
You can transfer data between your device and your computer. Transfer music, pictures, videos, documents, Android application package APKs, game roms, etc.

### Connect your device to your computer

Use the data cable to connect your device and computer. Swipe down from the top of the screen.

You can see in the notification bar that you have connected to the computer. You can use the computer to Access device files.

Default is in charging only state. (with pictures)



### Choose computer connection method

You can choose how to connect your computer

**Charging only:** Select this mode if you want your device to be fully charged as quickly as possible.

**Transfer files:** Select this mode if you need to transfer files such as photos, videos, and games between your device and computer.

## Set Up

### language setting

1. Go to Settings System Language and input > Language Select language.
2. Select the language you want to add

## **Handheld Settings**

### **Set video output mode**

1. Go to handheld settings Connect to TV.
2. Select the video output mode
3. Select the desired resolution and refresh rate from the list.

### **Set handle style**

1. Go to handheld settings > Input
2. Select the handle style

You can choose to set the controller to xbo mode or retro mode

### **Set trigger key input mode**

1. Go to handheld settings > Input
2. Select the trigger key input mode.
3. Choose to set the trigger key input mode to analog, digital, or both,

You can change the mode you want here according to the trigger key requirements of different games

### **Disable joystick**

1. Go to handheld settings > Input Input Control.
2. Check to disable the joystick.

### **Perform a handle test**

1. Go to handheld settings Input > Input Control,
2. Select rocker calibration and button test handle test
3. Operate the joystick and buttons, and judge whether the button functions are normal based on the test results.

### **Perform rocker calibration**

If you find that the joystick cannot be used normally, you can try to calibrate it on this page.

1. Go to handheld settings > Input > Input Control.
2. Select Joystick Calibration and Button Test > Joystick Calibration.
3. Perform calibration operations according to the prompts.

### **Change joystick dead zone radius**

1. Go to handheld settings > Input > Input Control.
2. Select Joystick Calibration and Button Test > Joystick Dead Zone Radius.
3. Adjust the dead zone radius of the left and right joysticks to a value you are accustomed to.

### **Change shoulder button dead zone length**

1. Go to handheld settings > Input > Input Control.
2. Select Joystick Calibration and Key Test > Shoulder Key Dead Zone Length.
3. Adjust the dead zone length of the left and right shoulder keys to a value you are accustomed to.

### **Reset**

Factory reset will erase all data in the device's internal storage. Before factory reset, please back up important data on your device.

Go to Settings > System > Reset Options > Click Clear All Data (Factory Reset) to delete all data.

### **System Update**

When a new system software version is available, the device will automatically remind you to download and install the update.

Go to System Updater Refresh to view the current version or manually check if there is a new version.

**Safety Tips:** This product contains a battery, please read the following instructions for safety usage.

1. Do not put the battery into fire or water to avoid short circuit and fire.
2. Never attempt to charge a physically damaged battery.
3. Please unplug the charger after the battery is fully charged.
4. Do not use sharp tools to damage the battery to avoid leakage or explosion.
5. Be careful of burns when the surface temperature of the machine is high.
6. If consumers use a power adapter for power supply, they should purchase a power adapter that has obtained CCC certification and meets standard requirements.
7. Android is a trademark of Google LLC.

### **SYSTEM PARAMETERS**

Processor	SD865
CPU	1 1xA77 @ 2.8G 3xA77 @ 2.4G 4xA55 @ 1.8G
GPU	Adreno 650
Process	7nm
RAM	8GB LPDDR4x @ 2133MHz
Storage	128GB UFS3.1
Screen	5.5" 1080p AMOLED 500Nits
Video Output	DisplayPort 1080p60
Connectivity	WiFi-6 + BT5.1
OS	Android 13
Battery	5000mAh
Charging Speed	27Watt
Cooling	Active Cooling
Size	199.2×78.5×15.6mm
Weight	280g

### FCC Warning

This device complies with part 15 of the FCC rules. Operation is subject to the following two conditions: (1) this device may not cause harmful interference, and (2) this device must accept any interference received, including interference that may cause undesired operation.

Changes or modifications not expressly approved by the party responsible for compliance could void the user's authority to operate the equipment.

**NOTE:** This equipment has been tested and found to comply with the limits for a Class B digital device, pursuant to part 15 of the FCC Rules. These limits are designed to provide reasonable protection against harmful interference in a residential installation. This equipment generates uses and can radiate radio frequency energy and, if not installed and used in accordance with the instructions, may cause harmful interference to radio communications. However, there is no guarantee that interference will not occur in a particular installation. If this equipment does cause harmful interference to radio or television reception, which can be determined by turning the equipment off and on, the user is encouraged to try to correct the interference by one or more of the following measures:

- Reorient or relocate the receiving antenna.
- Increase the separation between the equipment and receiver.
- Connect the equipment into an outlet on a circuit different from that to which the receiver is connected.
- Consult the dealer or an experienced radio/TV technician for help.


### Specific Absorption Rate (SAR) information

This device meets the government's requirements for FCC exposure limits set forth for an uncontrolled environment. This device was tested for typical body-worn operations with the back of the mobile phone kept 0 mm from the body. To maintain compliance with FCC RF exposure requirements, use accessories that maintain an 0 mm separation distance between the user's body and the back of the mobile phone. The use of belt clips, holsters and similar accessories should not contain metallic components in its assembly. The use of accessories that do not satisfy these requirements may not comply with FCC RF exposure requirements, and should be

avoided.



## Documents / Resources

	<p><a href="#">RETROID HQ-M9P Handheld Game Console</a> [pdf] User Manual 2BFEN-HQ-M9P, 2BFENHQM9P, HQ-M9P Handheld Game Console, HQ-M9P, Handheld Game Console, Game Console, Console</p>
-----------------------------------------------------------------------------------	------------------------------------------------------------------------------------------------------------------------------------------------------------------------------------------------

## References

- [User Manual](#)

### Manuals+. [Privacy Policy](#)

This website is an independent publication and is neither affiliated with nor endorsed by any of the trademark owners. The "Bluetooth®" word mark and logos are registered trademarks owned by Bluetooth SIG, Inc. The "Wi-Fi®" word mark and logos are registered trademarks owned by the Wi-Fi Alliance. Any use of these marks on this website does not imply any affiliation with or endorsement.